

Gale

BOUTIQUE HOTEL & RESIDENCES
FORT LAUDERDALE BEACH

BEACH HOUSE RESIDENCE

BEACH HOUSE 1

2 BDRM / 2.5 BATH / DEN

INTERIOR	1627 S F	151.2 M ²
TERRACE	379 SF	35.2M ²

TOTAL	2,006 S F	186.4 M ²
-------	-----------	----------------------



FIRST FLOOR PLAN

These drawings are conceptual only and are for the convenience of reference. They should not be relied upon as representations, express or implied, of final details of the residences. Units shown are examples of unit types and may not depict actual units. Stated dimensions are measured to the exterior boundaries of the exterior walls and the centerline of interior demising walls and in fact vary from the dimensions that would be determined by using the description and definition of the "unit" set forth in the declaration (which generally only includes the interior airspace between the perimeter walls and excludes interior structural components and terrace). For your reference, the area of the unit, determined in accordance with those defined unit boundaries is provided in the declaration. Note that measurements of rooms set forth on this floor plan are generally taken at the greatest points of each given room (as if the room were a perfect rectangle), without regard for any cutouts. Accordingly, the area of the actual room will typically be smaller than the product obtained by multiplying the stated length times width. All dimensions are approximate and may vary with actual construction, and all floor plans and development plans are subject to change. All depictions of finishes, furniture, furnishings, appliances, counters, soffits, floor coverings and other matters of detail, are conceptual only and are not necessarily included in each unit, or if included, included as depicted. Equal Housing Opportunity.

Gale

BOUTIQUE HOTEL & RESIDENCES
FORT LAUDERDALE BEACH

BEACH HOUSE RESIDENCE

BEACH HOUSE 1

2 BDRM / 2.5 BATH / DEN

INTERIOR	1627 S F	151.2 M ²
TERRACE	379 S F	35.2 M ²

TOTAL	2,006 S F	186.4 M ²
-------	-----------	----------------------



SECOND FLOOR PLAN

These drawings are conceptual only and are for the convenience of reference. They should not be relied upon as representations, express or implied, of final details of the residences. Units shown are examples of unit types and may not depict actual units. Stated dimensions are measured to the exterior boundaries of the exterior walls and the centerline of interior demising walls and in fact vary from the dimensions that would be determined by using the description and definition of the "unit" set forth in the declaration (which generally only includes the interior airspace between the perimeter walls and excludes interior structural components and terrace). For your reference, the area of the unit, determined in accordance with those defined unit boundaries is provided in the declaration. Note that measurements of rooms set forth on this floor plan are generally taken at the greatest points of each given room (as if the room were a perfect rectangle), without regard for any cutouts. Accordingly, the area of the actual room will typically be smaller than the product obtained by multiplying the stated length times width. All dimensions are approximate and may vary with actual construction, and all floor plans and development plans are subject to change. All depictions of finishes, furniture, furnishings, appliances, counters, soffits, floor coverings and other matters of detail, are conceptual only and are not necessarily included in each unit, or if included, included as depicted. Equal Housing Opportunity.

Gale

BOUTIQUE HOTEL & RESIDENCES
FORT LAUDERDALE BEACH

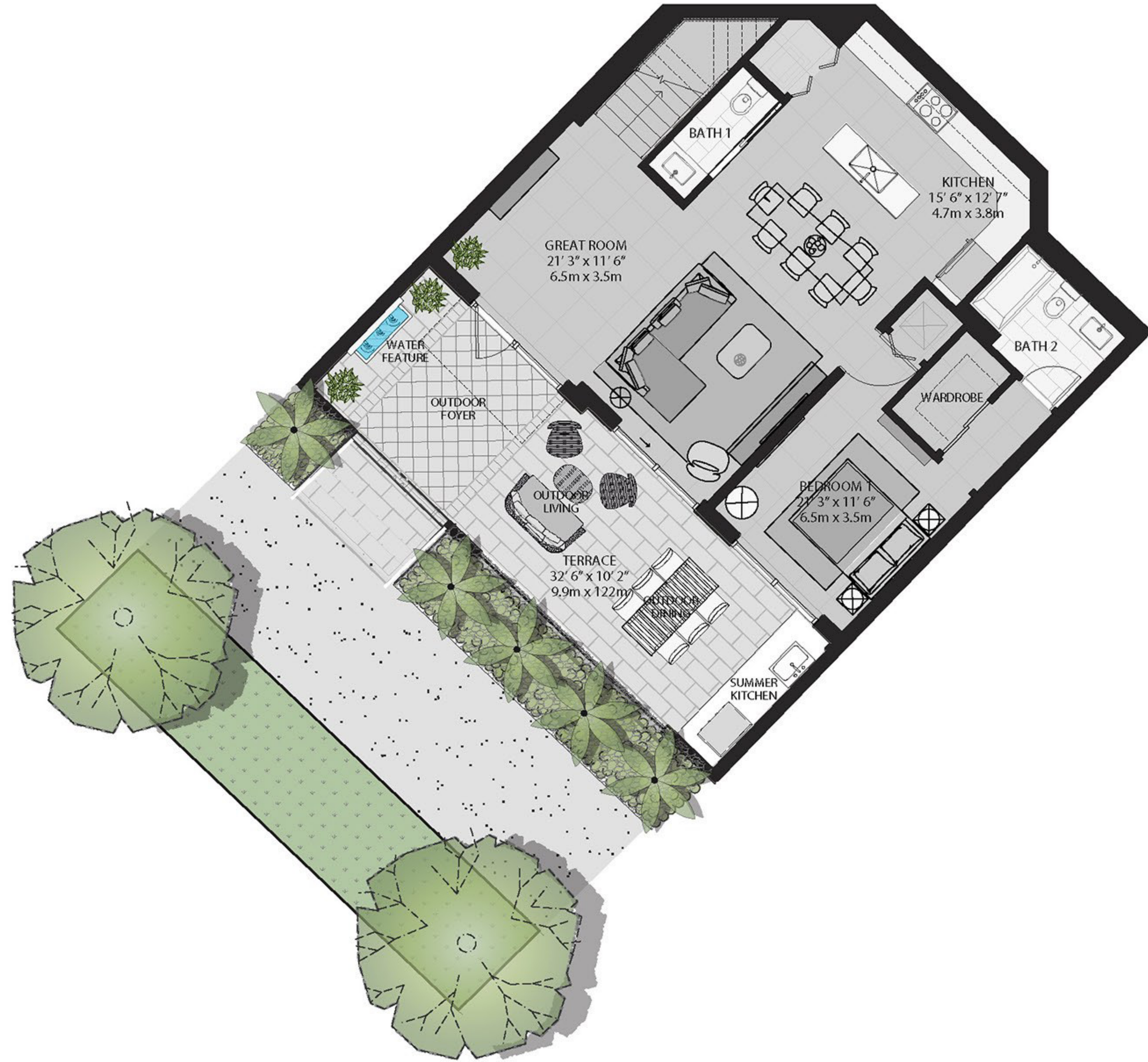
BEACH HOUSE RESIDENCE

BEACH HOUSE 2

3 BDRM / 3 BATH

INTERIOR	1746 S F	162.2 M ²
TERRACE	330 S F	30.6 M ²

TOTAL	2,076 S F	192.8 M ²
-------	-----------	----------------------



FIRST FLOOR PLAN

These drawings are conceptual only and are for the convenience of reference. They should not be relied upon as representations, express or implied, of final details of the residences. Units shown are examples of unit types and may not depict actual units. Stated dimensions are measured to the exterior boundaries of the exterior walls and the centerline of interior demising walls and in fact vary from the dimensions that would be determined by using the description and definition of the "unit" set forth in the declaration (which generally only includes the interior airspace between the perimeter walls and excludes interior structural components and terrace). For your reference, the area of the unit, determined in accordance with those defined unit boundaries is provided in the declaration. Note that measurements of rooms set forth on this floor plan are generally taken at the greatest points of each given room (as if the room were a perfect rectangle), without regard for any cutouts. Accordingly, the area of the actual room will typically be smaller than the product obtained by multiplying the stated length times width. All dimensions are approximate and may vary with actual construction, and all floor plans and development plans are subject to change. All depictions of finishes, furniture, furnishings, appliances, counters, soffits, floor coverings and other matters of detail, are conceptual only and are not necessarily included in each unit, or if included, included as depicted. Equal Housing Opportunity.

Gale

BOUTIQUE HOTEL & RESIDENCES
FORT LAUDERDALE BEACH

BEACH HOUSE RESIDENCE

BEACH HOUSE 2

3 BDRM / 3 BATH

INTERIOR	1746 S F	162.2 M ²
TERRACE	330 S F	30.6 M ²

TOTAL	2,076 S F	192.8 M ²
-------	-----------	----------------------



SECOND FLOOR PLAN

These drawings are conceptual only and are for the convenience of reference. They should not be relied upon as representations, express or implied, of final details of the residences. Units shown are examples of unit types and may not depict actual units. Stated dimensions are measured to the exterior boundaries of the exterior walls and the centerline of interior demising walls and in fact vary from the dimensions that would be determined by using the description and definition of the "unit" set forth in the declaration (which generally only includes the interior airspace between the perimeter walls and excludes interior structural components and terrace). For your reference, the area of the unit, determined in accordance with those defined unit boundaries is provided in the declaration. Note that measurements of rooms set forth on this floor plan are generally taken at the greatest points of each given room (as if the room were a perfect rectangle), without regard for any cutouts. Accordingly, the area of the actual room will typically be smaller than the product obtained by multiplying the stated length times width. All dimensions are approximate and may vary with actual construction, and all floor plans and development plans are subject to change. All depictions of finishes, furniture, furnishings, appliances, counters, soffits, floor coverings and other matters of detail, are conceptual only and are not necessarily included in each unit, or if included, included as depicted. Equal Housing Opportunity.

Gale

BOUTIQUE HOTEL & RESIDENCES
FORT LAUDERDALE BEACH

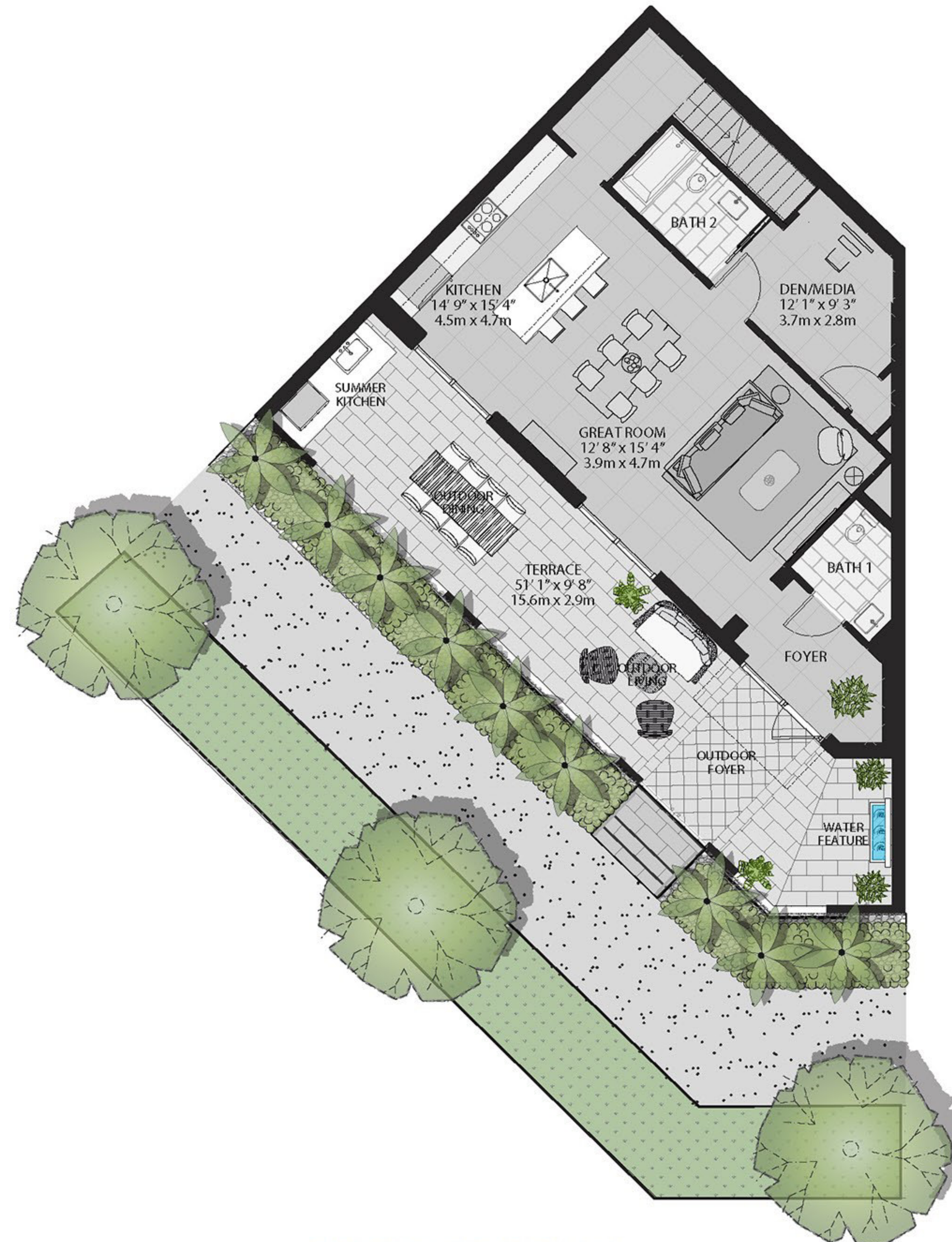
BEACH HOUSE RESIDENCE

BEACH HOUSE 3

2 BDRM / 3.5 BATH / DEN

INTERIOR	1854 S F	172.2 M ²
TERRACE	494 S F	45.9 M ²

TOTAL	2,348 S F	218.1 M ²
-------	-----------	----------------------



FIRST FLOOR PLAN

These drawings are conceptual only and are for the convenience of reference. They should not be relied upon as representations, express or implied, of final details of the residences. Units shown are examples of unit types and may not depict actual units. Stated dimensions are measured to the exterior boundaries of the exterior walls and the centerline of interior demising walls and in fact vary from the dimensions that would be determined by using the description and definition of the "unit" set forth in the declaration (which generally only includes the interior airspace between the perimeter walls and excludes interior structural components and terrace). For your reference, the area of the unit, determined in accordance with those defined unit boundaries is provided in the declaration. Note that measurements of rooms set forth on this floor plan are generally taken at the greatest points of each given room (as if the room were a perfect rectangle), without regard for any cutouts. Accordingly, the area of the actual room will typically be smaller than the product obtained by multiplying the stated length times width. All dimensions are approximate and may vary with actual construction, and all floor plans and development plans are subject to change. All depictions of finishes, furniture, furnishings, appliances, counters, soffits, floor coverings and other matters of detail, are conceptual only and are not necessarily included in each unit, or if included, included as depicted. Equal Housing Opportunity.



BOUTIQUE HOTEL & RESIDENCES
FORT LAUDERDALE BEACH

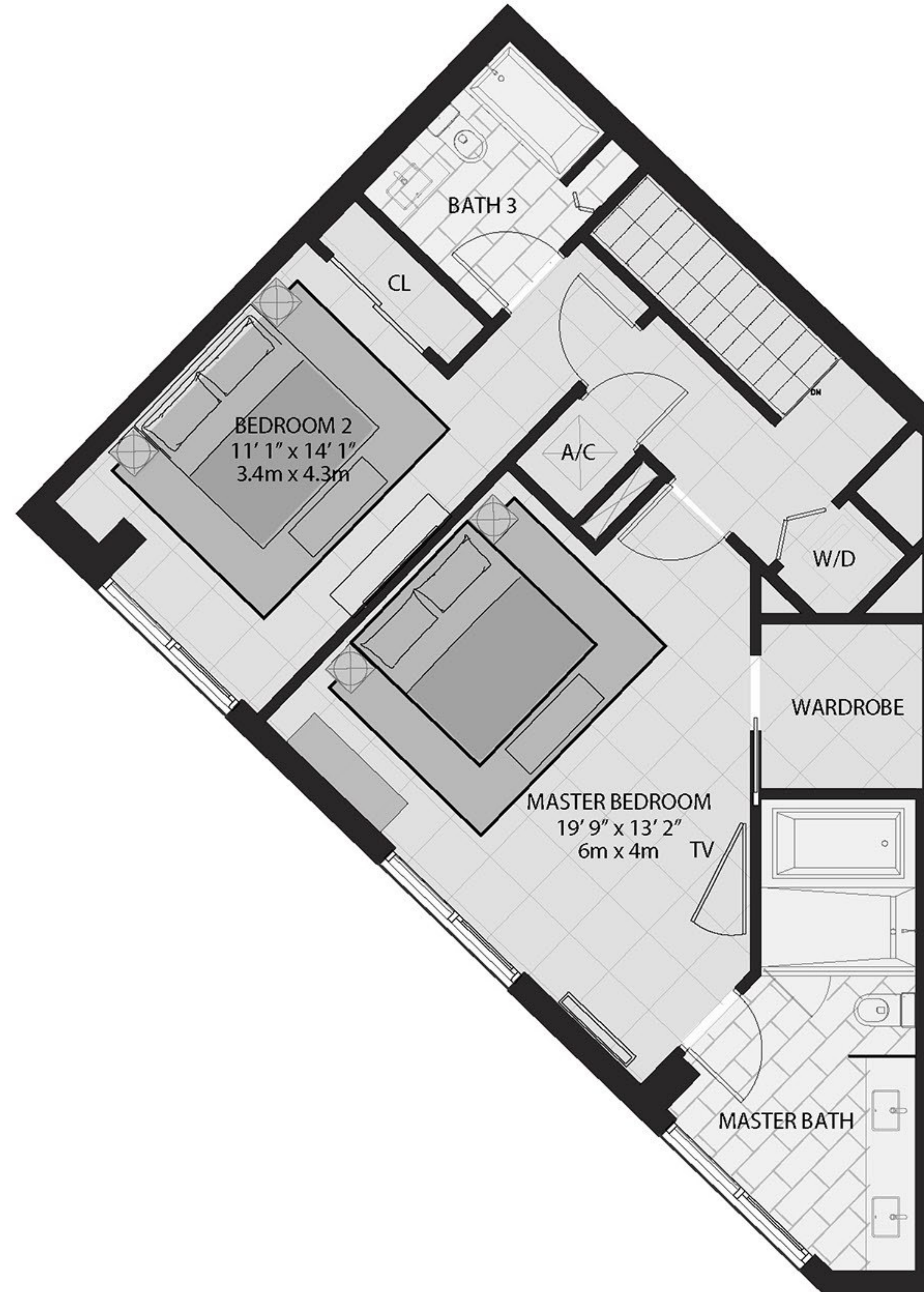
BEACH HOUSE RESIDENCE

BEACH HOUSE 3

2 BDRM / 3.5 BATH / DEN

INTERIOR	1854 SF	172.2 M ²
TERRACE	494 SF	45.9 M ²

TOTAL	2,348 SF	218.1 M ²
-------	----------	----------------------



SECOND FLOOR PLAN

These drawings are conceptual only and are for the convenience of reference. They should not be relied upon as representations, express or implied, of final details of the residences. Units shown are examples of unit types and may not depict actual units. Stated dimensions are measured to the exterior boundaries of the exterior walls and the centerline of interior demising walls and in fact vary from the dimensions that would be determined by using the description and definition of the "unit" set forth in the declaration (which generally only includes the interior airspace between the perimeter walls and excludes interior structural components and terrace). For your reference, the area of the unit, determined in accordance with those defined unit boundaries is provided in the declaration. Note that measurements of rooms set forth on this floor plan are generally taken at the greatest points of each given room (as if the room were a perfect rectangle), without regard for any cutouts. Accordingly, the area of the actual room will typically be smaller than the product obtained by multiplying the stated length times width. All dimensions are approximate and may vary with actual construction, and all floor plans and development plans are subject to change. All depictions of finishes, furniture, furnishings, appliances, counters, soffits, floor coverings and other matters of detail, are conceptual only and are not necessarily included in each unit, or if included, included as depicted. Equal Housing Opportunity.

Gale

BOUTIQUE HOTEL & RESIDENCES
FORT LAUDERDALE BEACH

BEACH HOUSE RESIDENCE

BEACH HOUSE 4,5,6,7

2 BDRM / 2.5 BATH

INTERIOR	1644 S F	152.7 M ²
TERRACE	286 S F	26.6 M ²
TOTAL	1,930 S F	179.3 M ²



FIRST FLOOR PLAN

These drawings are conceptual only and are for the convenience of reference. They should not be relied upon as representations, express or implied, of final details of the residences. Units shown are examples of unit types and may not depict actual units. Stated dimensions are measured to the exterior boundaries of the exterior walls and the centerline of interior demising walls and in fact vary from the dimensions that would be determined by using the description and definition of the "unit" set forth in the declaration (which generally only includes the interior airspace between the perimeter walls and excludes interior structural components and terrace). For your reference, the area of the unit, determined in accordance with those defined unit boundaries is provided in the declaration. Note that measurements of rooms set forth on this floor plan are generally taken at the greatest points of each given room (as if the room were a perfect rectangle), without regard for any cutouts. Accordingly, the area of the actual room will typically be smaller than the product obtained by multiplying the stated length times width. All dimensions are approximate and may vary with actual construction, and all floor plans and development plans are subject to change. All depictions of finishes, furniture, furnishings, appliances, counters, fixtures, floor coverings and other matters of detail, are conceptual only and are not necessarily included in each unit, or if included, included as depicted. Equal Housing Opportunity.

Gale

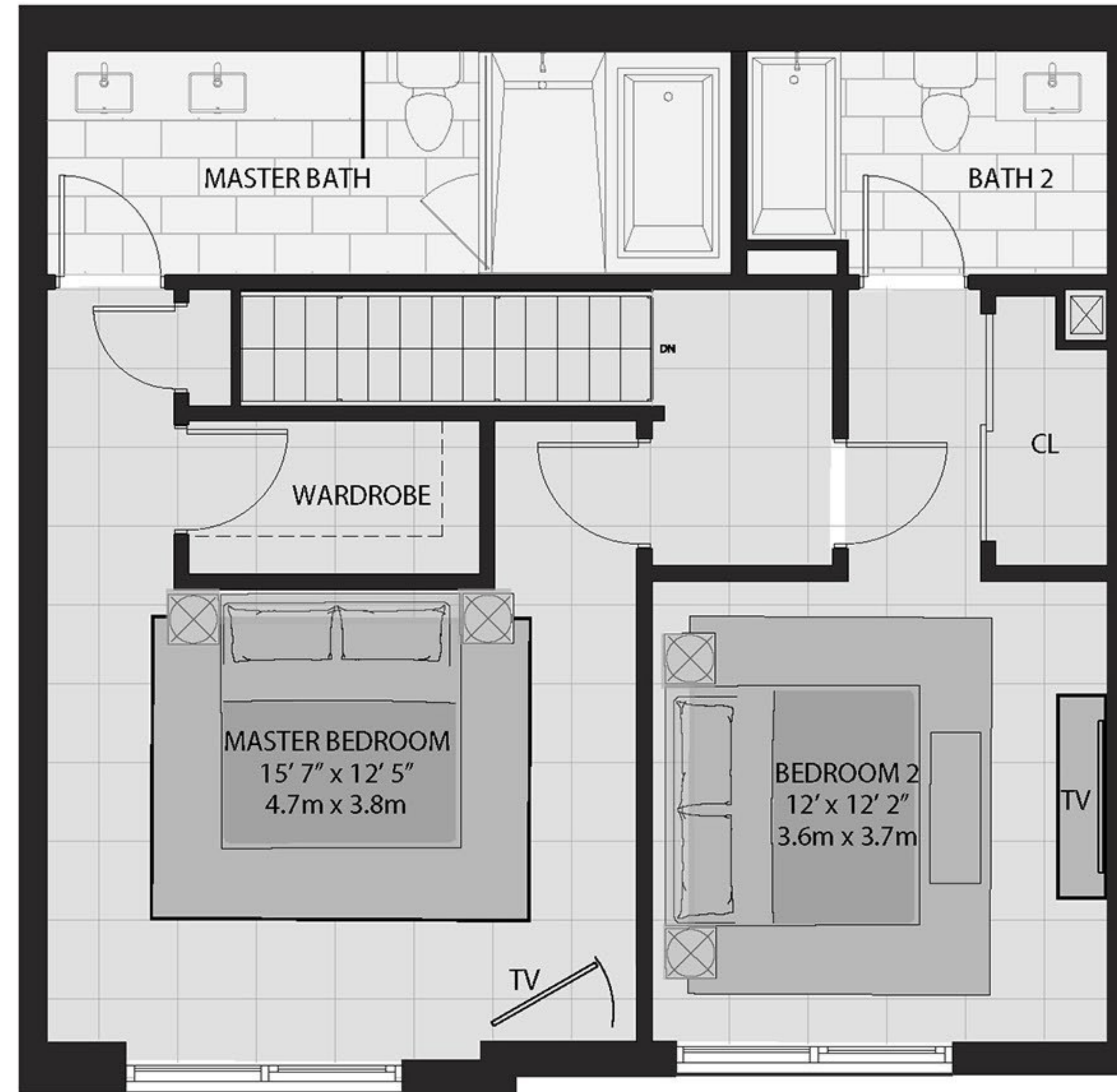
BOUTIQUE HOTEL & RESIDENCES
FORT LAUDERDALE BEACH

BEACH HOUSE RESIDENCE

BEACH HOUSE 4,5,6,7

2 BDRM / 2.5 BATH

INTERIOR	1644 SF	152.7 M ²
TERRACE	286 SF	26.6 M ²
TOTAL	1,930 SF	179.3 M ²



SECOND FLOOR PLAN

These drawings are conceptual only and are for the convenience of reference. They should not be relied upon as representations, express or implied, of final details of the residences. Units shown are examples of unit types and may not depict actual units. Stated dimensions are measured to the exterior boundaries of the exterior walls and the centerline of interior demising walls and in fact vary from the dimensions that would be determined by using the description and definition of the "unit" set forth in the declaration (which generally only includes the interior airspace between the perimeter walls and excludes interior structural components and terrace). For your reference, the area of the unit, determined in accordance with those defined unit boundaries is provided in the declaration. Note that measurements of rooms set forth on this floor plan are generally taken at the greatest points of each given room (as if the room were a perfect rectangle), without regard for any cutouts. Accordingly, the area of the actual room will typically be smaller than the product obtained by multiplying the stated length times width. All dimensions are approximate and may vary with actual construction, and all floor plans and development plans are subject to change. All depictions of finishes, furniture, furnishings, appliances, counters, soffits, floor coverings and other matters of detail, are conceptual only and are not necessarily included in each unit, or if included, included as depicted. Equal Housing Opportunity.