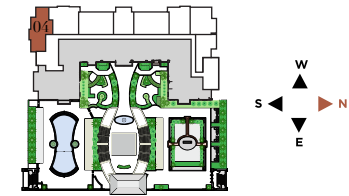
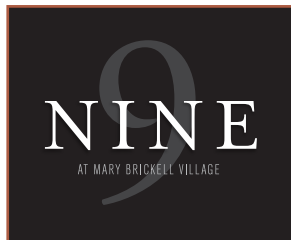
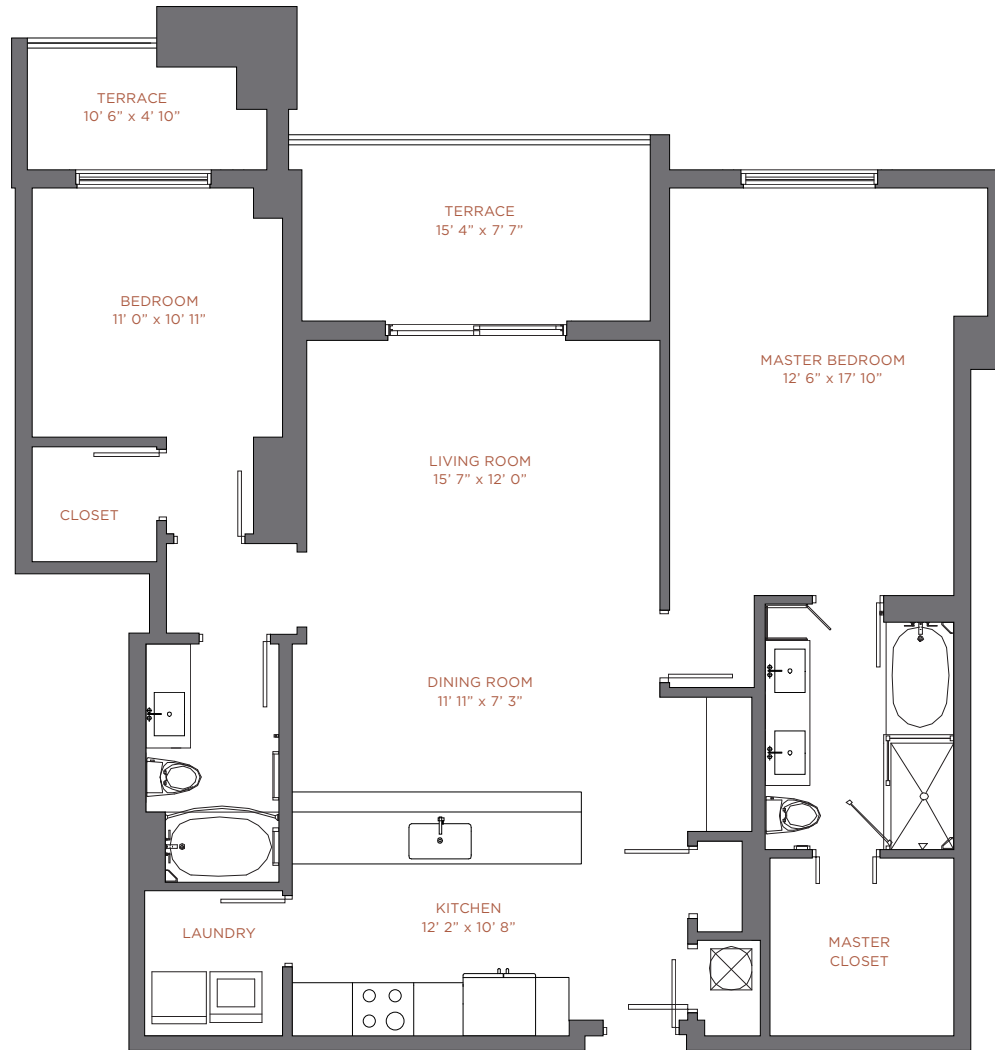


RESIDENCE 04
 Level 11
 2 Br / 2 Ba

Interior:	1,366 sqft	127 m ²
Terrace:	477 sqft	44 m ²
Total:	1,843 sqft	171 m²

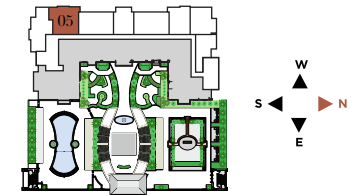


There are various methods for calculating the square footage of a condominium unit and depending upon the method of calculation, the quoted square footage of a condominium unit may vary. The square footages of the Unit shown herein are based upon the "Architectural Method" of measurement and stated dimensions are measured to the exterior boundaries of the exterior walls and the centerline of interior demising walls and in fact vary from the dimensions that would be determined by using the description and boundaries of the Unit set forth in the Declaration (which only includes the interior airspace between the perimeter walls and excludes interior structural components). Accordingly, the square footages stated herein are greater than those which would be derived by measuring only the interior area space for the Unit as the Unit is described in the Declaration. Note that measurements of rooms set forth on this or plan are generally taken at the greatest points of each given room (as if the room were a perfect rectangle), without regard for any cutouts. Accordingly, the area of the actual room will typically be smaller than the product obtained by multiplying the stated length times width. All depictions of textures, appliances, counters, cabinetry, windows and other matters of detail, are conceptual only and subject to change or modification. Seller does not make, and specially disclaims, any representation or warranty as to the actual size, dimensions or square footage of the Unit. Purchaser should refer to the description and boundaries of the Unit set forth in the recorded Declaration and make its own determination as to the area and dimensions of the Unit. These drawings are conceptual only and are for the convenience of reference.

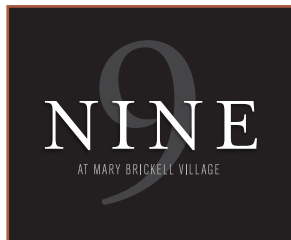
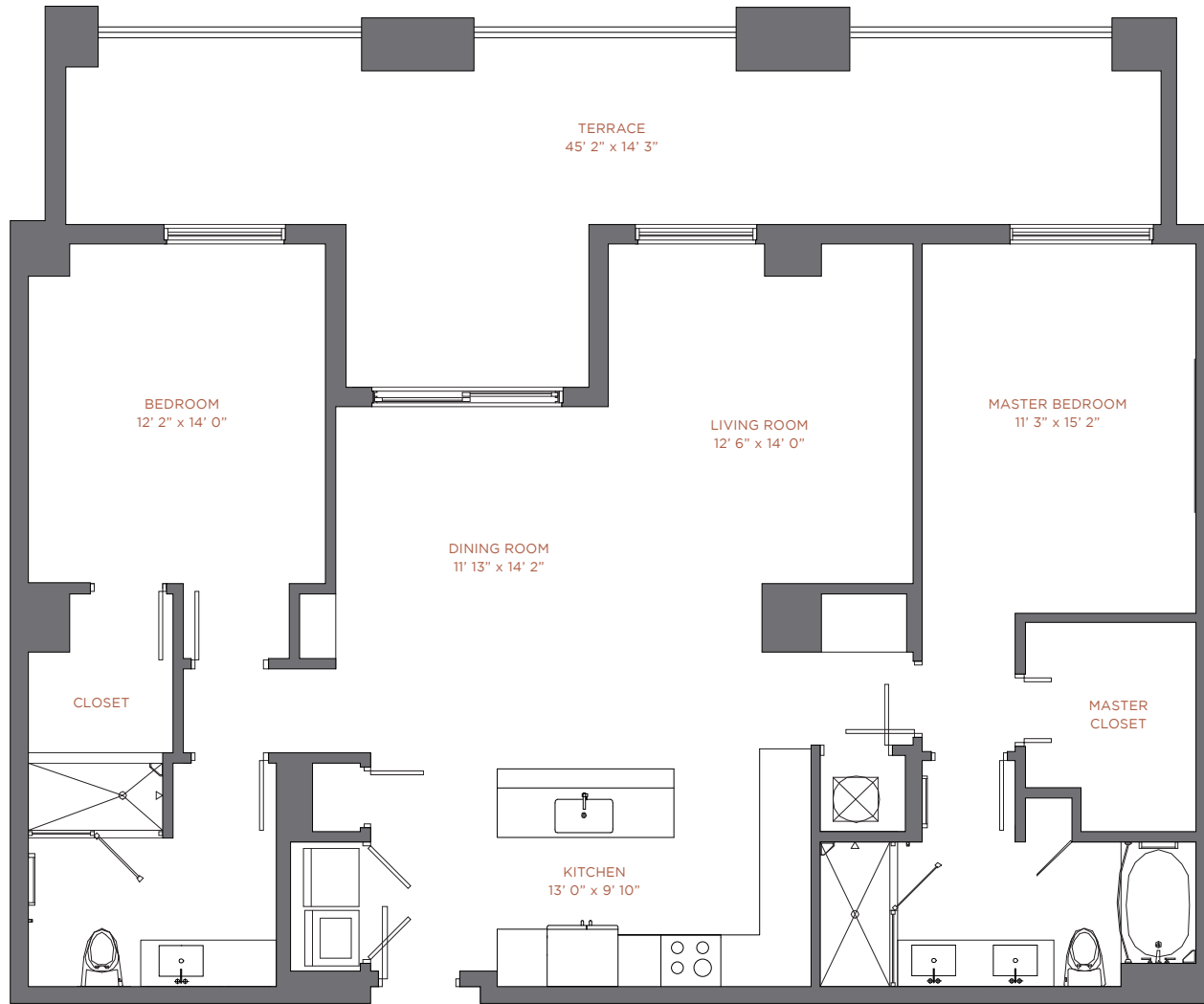


RESIDENCE 05
 Level 11
 2 Br / 2 Ba

Interior:	1,390 sqft	129 m ²
Terrace:	164 sqft	15 m ²
Total:	1,554 sqft	144 m²

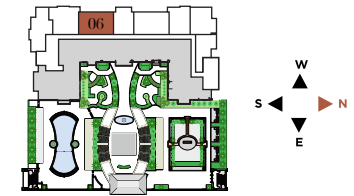


There are various methods for calculating the square footage of a condominium unit and depending upon the method of calculation, the quoted square footage of a condominium unit may vary. The square footages of the Unit shown herein are based upon the "Architectural Method" of measurement and stated dimensions are measured to the exterior boundaries of the exterior walls and the centerline of interior demising walls and in fact vary from the dimensions that would be determined by using the description and boundaries of the Unit set forth in the Declaration (which only includes the interior airspace between the perimeter walls and excludes interior structural components). Accordingly, the square footages stated herein are greater than those which would be derived by measuring only the interior area space for the Unit as the Unit is described in the Declaration. Note that measurements of rooms set forth on this or plan are generally taken at the greatest points of each given room (as if the room were a perfect rectangle), without regard for any cutouts. Accordingly, the area of the actual room will typically be smaller than the product obtained by multiplying the stated length times width. All depictions of textures, appliances, counters, cabinetry, windows and other matters of detail, are conceptual only and subject to change or modification. Seller does not make, and specially disclaims, any representation or warranty as to the actual size, dimensions or square footage of the Unit. Purchaser should refer to the description and boundaries of the Unit set forth in the recorded Declaration and make its own determination as to the area and dimensions of the Unit. These drawings are conceptual only and are for the convenience of reference.

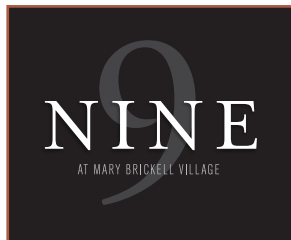
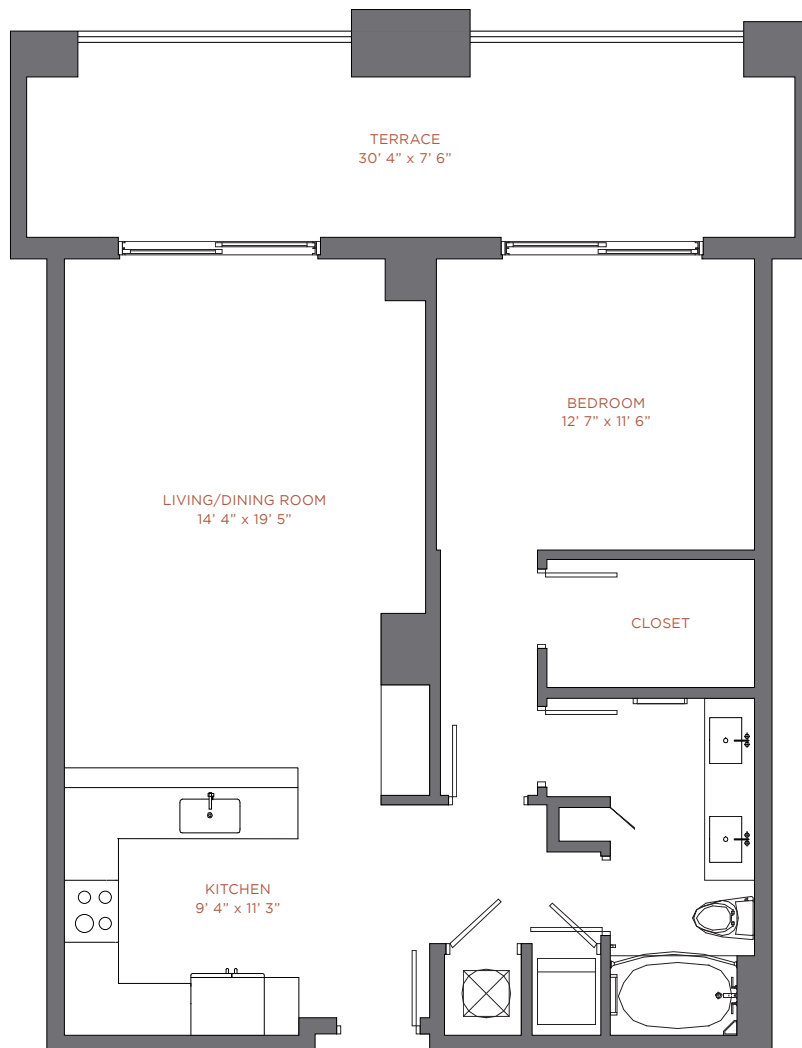


RESIDENCE 06
 Level 11
 2 Br / 2 Ba

Interior:	1,484 sqft	138 m ²
Terrace:	397 sqft	37 m ²
Total:	1,881 sqft	175 m²

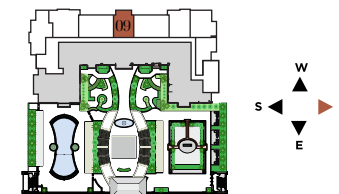


There are various methods for calculating the square footage of a condominium unit and depending upon the method of calculation, the quoted square footage of a condominium unit may vary. The square footages of the Unit shown herein are based upon the "Architectural Method" of measurement and stated dimensions are measured to the exterior boundaries of the exterior walls and the centerline of interior demising walls and in fact vary from the dimensions that would be determined by using the description and boundaries of the Unit set forth in the Declaration (which only includes the interior airspace between the perimeter walls and excludes interior structural components). Accordingly, the square footages stated herein are greater than those which would be derived by measuring only the interior area space for the Unit as the Unit is described in the Declaration. Note that measurements of rooms set forth on this or plan are generally taken at the greatest points of each given room (as if the room were a perfect rectangle), without regard for any cutouts. Accordingly, the area of the actual room will typically be smaller than the product obtained by multiplying the stated length times width. All depictions of textures, appliances, counters, cabinetry, windows and other matters of detail, are conceptual only and subject to change or modification. Seller does not make, and specially disclaims, any representation or warranty as to the actual size, dimensions or square footage of the Unit. Purchaser should refer to the description and boundaries of the Unit set forth in the recorded Declaration and make its own determination as to the area and dimensions of the Unit. These drawings are conceptual only and are for the convenience of reference.

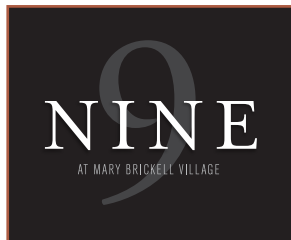
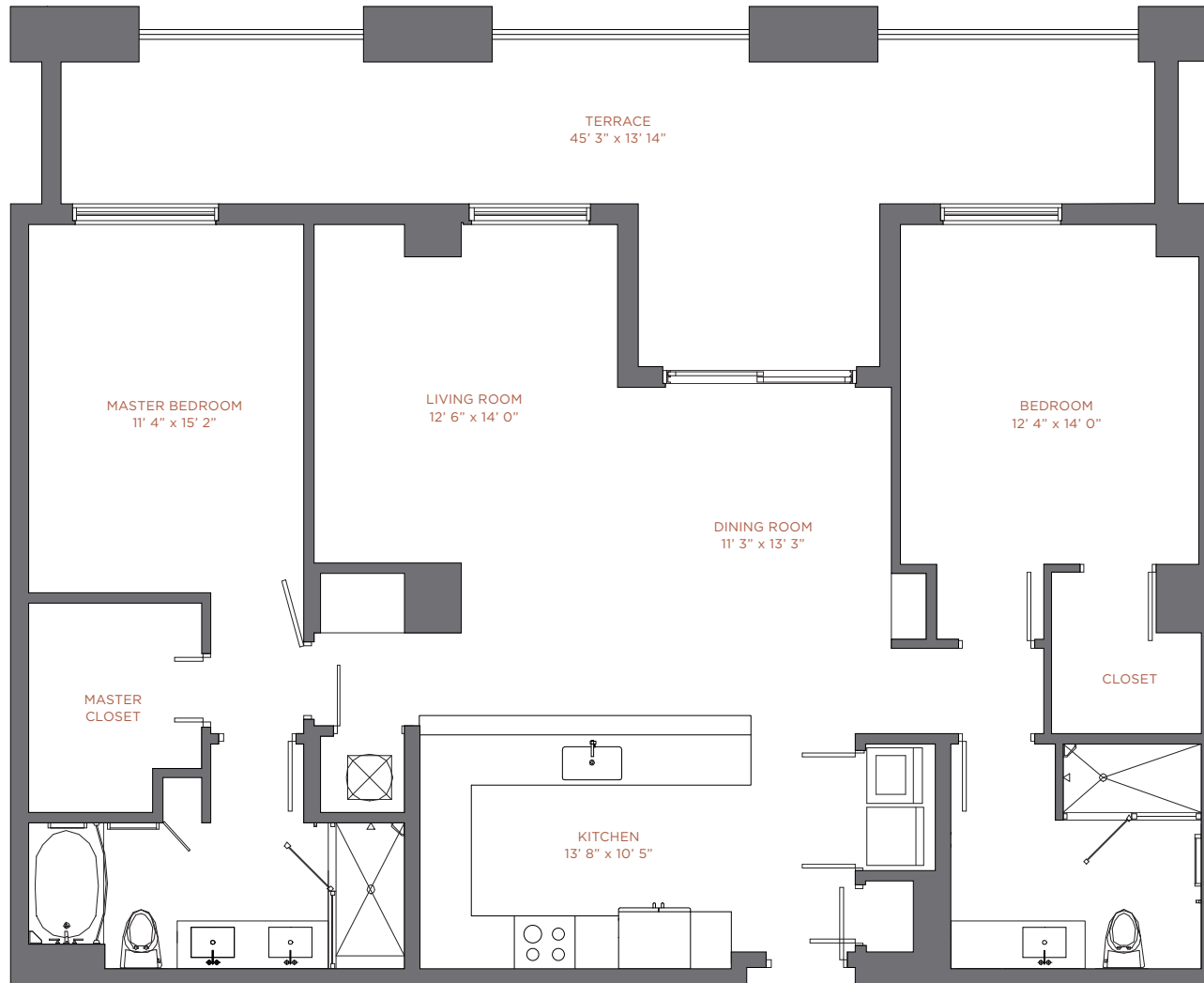


RESIDENCE 09
Level 11
1 Br / 1 Ba

Interior:	886 sqft	82 m ²
Terrace:	222 sqft	21 m ²
Total:	1,108 sqft	103 m²

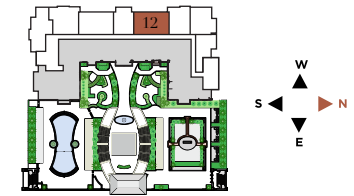


There are various methods for calculating the square footage of a condominium unit and depending upon the method of calculation, the quoted square footage of a condominium unit may vary. The square footages of the Unit shown herein are based upon the "Architectural Method" of measurement and stated dimensions are measured to the exterior boundaries of the exterior walls and the centerline of interior demising walls and in fact vary from the dimensions that would be determined by using the description and boundaries of the Unit set forth in the Declaration (which only includes the interior airspace between the perimeter walls and excludes interior structural components). Accordingly, the square footages stated herein are greater than those which would be derived by measuring only the interior area space for the Unit as the Unit is described in the Declaration. Note that measurements of rooms set forth on this or plan are generally taken at the greatest points of each given room (as if the room were a perfect rectangle), without regard for any cutouts. Accordingly, the area of the actual room will typically be smaller than the product obtained by multiplying the stated length times width. All depictions of textures, appliances, counters, cabinetry, windows and other matters of detail, are conceptual only and subject to change or modification. Seller does not make, and specially disclaims, any representation or warranty as to the actual size, dimensions or square footage of the Unit. Purchaser should refer to the description and boundaries of the Unit set forth in the recorded Declaration and make its own determination as to the area and dimensions of the Unit. These drawings are conceptual only and are for the convenience of reference.

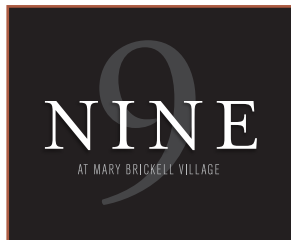
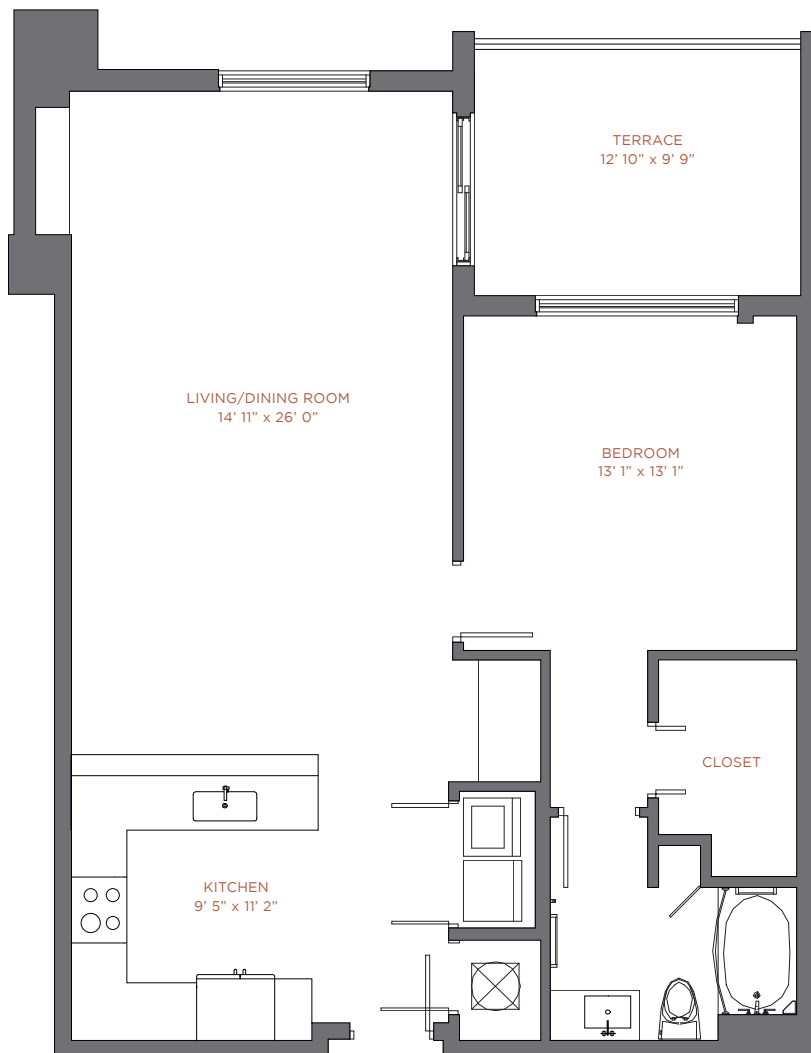


RESIDENCE 12
Level 11
2 Br / 2 Ba

Interior:	1,489 sqft	138 m ²
Terrace:	398 sqft	37 m ²
Total:	1,887 sqft	175 m²

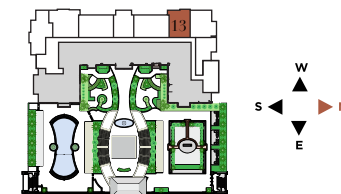


There are various methods for calculating the square footage of a condominium unit and depending upon the method of calculation, the quoted square footage of a condominium unit may vary. The square footages of the Unit shown herein are based upon the "Architectural Method" of measurement and stated dimensions are measured to the exterior boundaries of the exterior walls and the centerline of interior demising walls and in fact vary from the dimensions that would be determined by using the description and boundaries of the Unit set forth in the Declaration (which only includes the interior airspace between the perimeter walls and excludes interior structural components). Accordingly, the square footages stated herein are greater than those which would be derived by measuring only the interior area space for the Unit as the Unit is described in the Declaration. Note that measurements of rooms set forth on this plan are generally taken at the greatest points of each given room (as if the room were a perfect rectangle), without regard for any cutouts. Accordingly, the area of the actual room will typically be smaller than the product obtained by multiplying the stated length times width. All depictions of textures, appliances, counters, cabinetry, windows and other matters of detail, are conceptual only and subject to change or modification. Seller does not make, and specially disclaims, any representation or warranty as to the actual size, dimensions or square footage of the Unit. Purchaser should refer to the description and boundaries of the Unit set forth in the recorded Declaration and make its own determination as to the area and dimensions of the Unit. These drawings are conceptual only and are for the convenience of reference.



RESIDENCE 13
 Level 11
 1 Br / 1 Ba

Interior:	1,020 sqft	95 m ²
Terrace:	125 sqft	12 m ²
Total:	1,145 sqft	107 m²

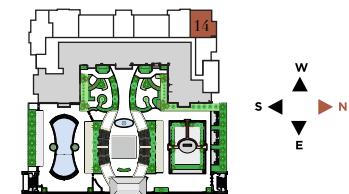


There are various methods for calculating the square footage of a condominium unit and depending upon the method of calculation, the quoted square footage of a condominium unit may vary. The square footages of the Unit shown herein are based upon the "Architectural Method" of measurement and stated dimensions are measured to the exterior boundaries of the exterior walls and the centerline of interior demising walls and in fact vary from the dimensions that would be determined by using the description and boundaries of the Unit set forth in the Declaration (which only includes the interior airspace between the perimeter walls and excludes interior structural components). Accordingly, the square footages stated herein are greater than those which would be derived by measuring only the interior area space for the Unit as the Unit is described in the Declaration. Note that measurements of rooms set forth on this or plan are generally taken at the greatest points of each given room (as if the room were a perfect rectangle), without regard for any cutouts. Accordingly, the area of the actual room will typically be smaller than the product obtained by multiplying the stated length times width. All depictions of textures, appliances, counters, cabinetry, windows and other matters of detail, are conceptual only and subject to change or modification. Seller does not make, and specially disclaims, any representation or warranty as to the actual size, dimensions or square footage of the Unit. Purchaser should refer to the description and boundaries of the Unit set forth in the recorded Declaration and make its own determination as to the area and dimensions of the Unit. These drawings are conceptual only and are for the convenience of reference.

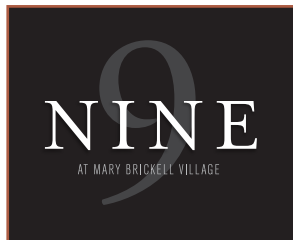
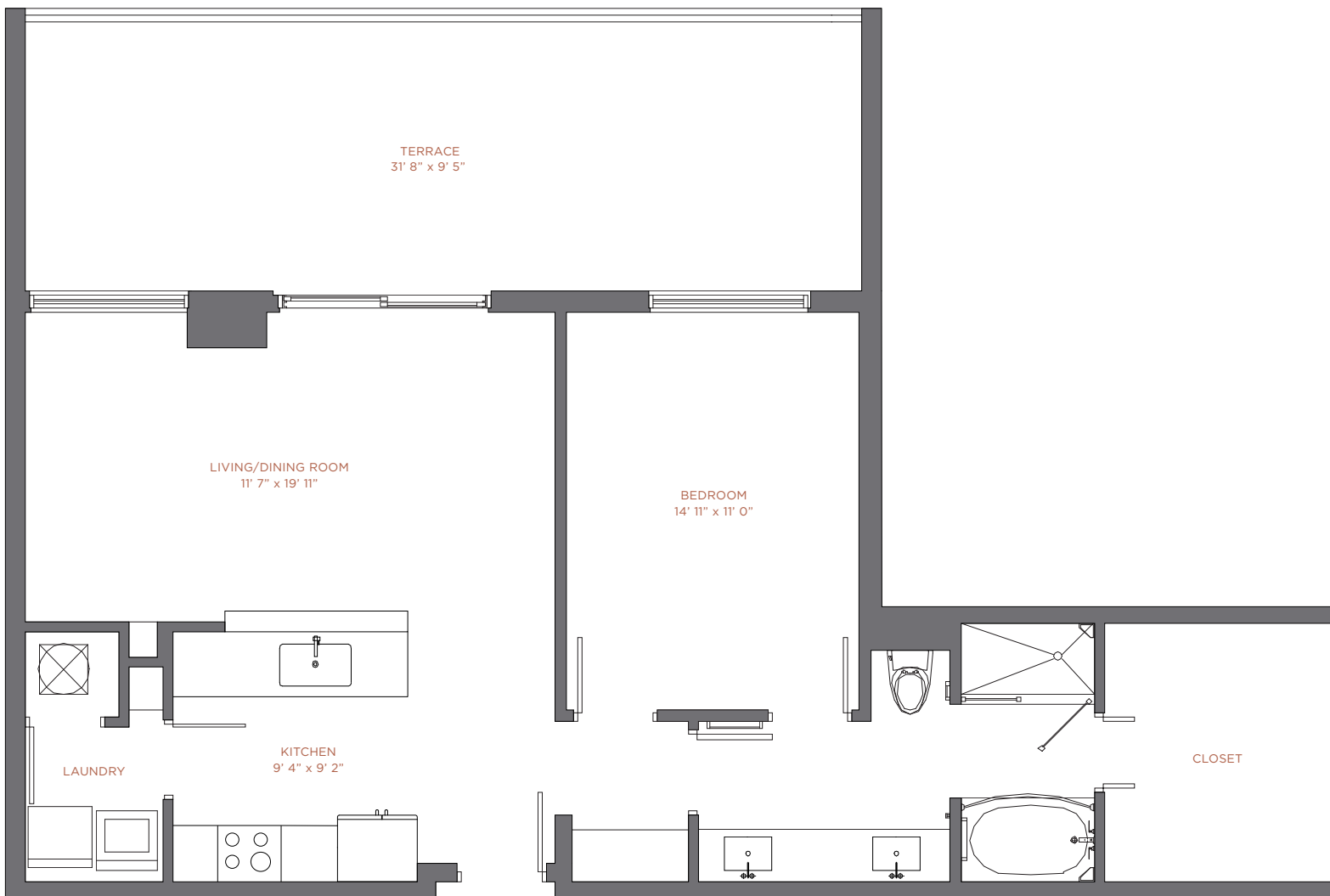


RESIDENCE 14
 Level 11
 2 Br / 2 Ba

Interior:	1,173 sqft	109 m ²
Terrace:	540 sqft	50 m ²
Total:	1,713 sqft	159 m²

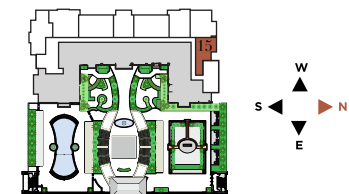


There are various methods for calculating the square footage of a condominium unit and depending upon the method of calculation, the quoted square footage of a condominium unit may vary. The square footages of the Unit shown herein are based upon the "Architectural Method" of measurement and stated dimensions are measured to the exterior boundaries of the exterior walls and the centerline of interior demising walls and in fact vary from the dimensions that would be determined by using the description and boundaries of the Unit set forth in the Declaration (which only includes the interior airspace between the perimeter walls and excludes interior structural components). Accordingly, the square footages stated herein are greater than those which would be derived by measuring only the interior area space for the Unit as the Unit is described in the Declaration. Note that measurements of rooms set forth on this or plan are generally taken at the greatest points of each given room (as if the room were a perfect rectangle), without regard for any cutouts. Accordingly, the area of the actual room will typically be smaller than the product obtained by multiplying the stated length times width. All depictions of textures, appliances, counters, cabinetry, windows and other matters of detail, are conceptual only and subject to change or modification. Seller does not make, and specially disclaims, any representation or warranty as to the actual size, dimensions or square footage of the Unit. Purchaser should refer to the description and boundaries of the Unit set forth in the recorded Declaration and make its own determination as to the area and dimensions of the Unit. These drawings are conceptual only and are for the convenience of reference.



RESIDENCE 15
 Level 11
 1 Br / 1 Ba

Interior:	914 sqft	85 m ²
Terrace:	299 sqft	28 m ²
Total:	1,213 sqft	113 m²

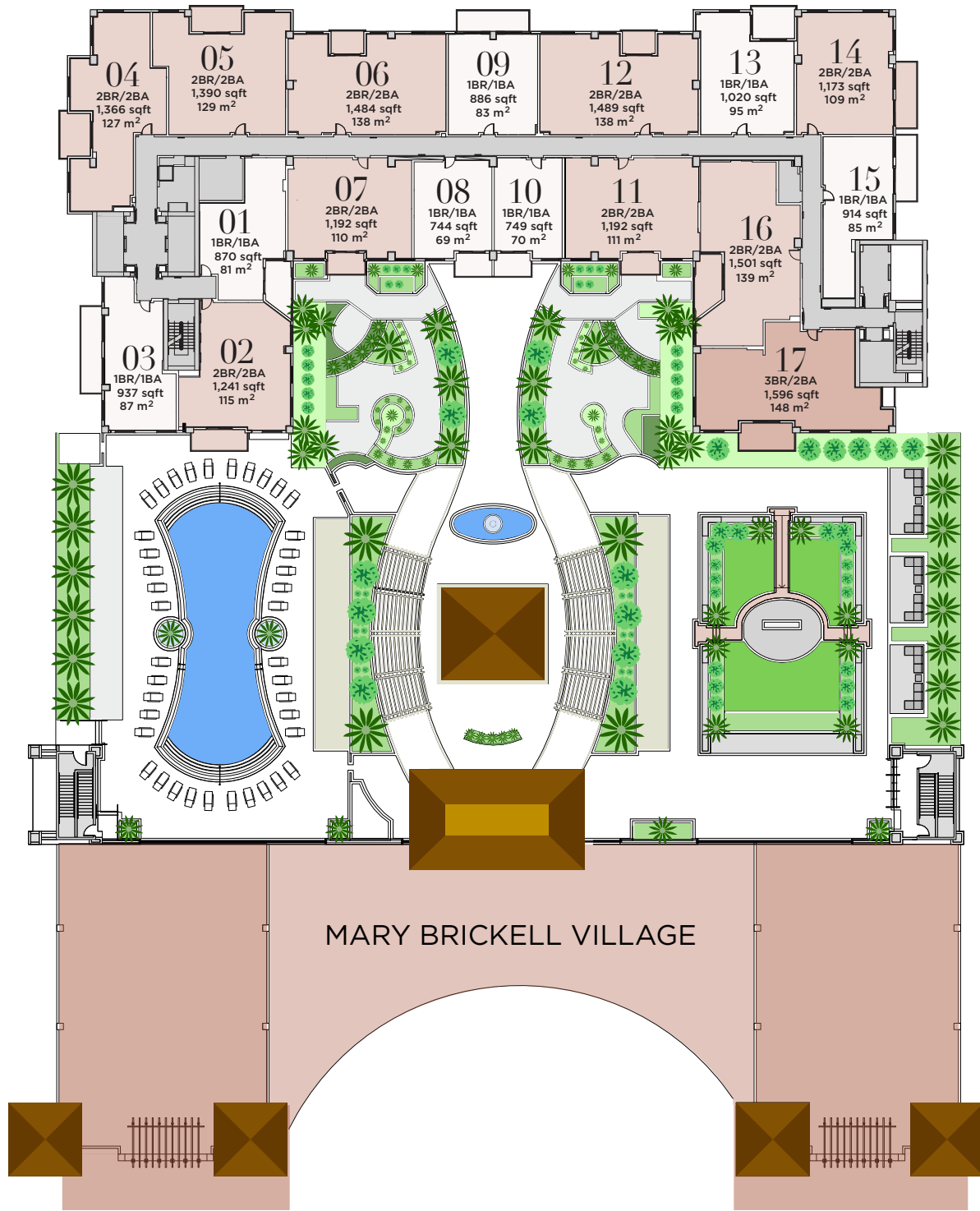


There are various methods for calculating the square footage of a condominium unit and depending upon the method of calculation, the quoted square footage of a condominium unit may vary. The square footages of the Unit shown herein are based upon the "Architectural Method" of measurement and stated dimensions are measured to the exterior boundaries of the exterior walls and the centerline of interior demising walls and in fact vary from the dimensions that would be determined by using the description and boundaries of the Unit set forth in the Declaration (which only includes the interior airspace between the perimeter walls and excludes interior structural components). Accordingly, the square footages stated herein are greater than those which would be derived by measuring only the interior area space for the Unit as the Unit is described in the Declaration. Note that measurements of rooms set forth on this or plan are generally taken at the greatest points of each given room (as if the room were a perfect rectangle), without regard for any cutouts. Accordingly, the area of the actual room will typically be smaller than the product obtained by multiplying the stated length times width. All depictions of textures, appliances, counters, cabinetry, windows and other matters of detail, are conceptual only and subject to change or modification. Seller does not make, and specially disclaims, any representation or warranty as to the actual size, dimensions or square footage of the Unit. Purchaser should refer to the description and boundaries of the Unit set forth in the recorded Declaration and make its own determination as to the area and dimensions of the Unit. These drawings are conceptual only and are for the convenience of reference.

SW 1ST AVE

SW 10TH ST

SW 9TH ST



MARY BRICKELL VILLAGE

SOUTH MIAMI AVE

NINE
AT MARY BRICKELL VILLAGE

SITE PLAN



There are various methods for calculating the square footage of a condominium unit and depending upon the method of calculation, the quoted square footage of a condominium unit may vary. The square footages of the Unit shown herein are based upon the "Architectural Method" of measurement and stated dimensions are measured to the exterior boundaries of the exterior walls and in fact vary from the dimensions that would be determined by using the description and boundaries of the Unit set forth in the Declaration (which only includes the interior airspace between the perimeter walls and excludes interior structural components). Accordingly, the square footages stated herein are greater than those which would be derived by measuring only the interior area space for the Unit as the Unit is described in the Declaration. Note that measurements of rooms set forth on this or plan are generally taken at the greatest points of each given room (as if the room were a perfect rectangle), without regard for any cutouts. Accordingly, the area of the actual room will typically be smaller than the product obtained by multiplying the stated length times width. All depictions of textures, appliances, counters, cabinetry, windows and other matters of detail, are conceptual only and subject to change or modification. Seller does not make, and specially disclaims, any representation or warranty as to the actual size, dimensions or square footage of the Unit. Purchaser should refer to the description and boundaries of the Unit set forth in the recorded Declaration and make its own determination as to the area and dimensions of the Unit. These drawings are conceptual only and are for the convenience of reference. ORAL REPRESENTATIONS CANNOT BE RELIED UPON AS CORRECTLY STATING REPRESENTATIONS OF THE DEVELOPER. FOR CORRECT REPRESENTATIONS, MAKE REFERENCE TO THIS BROCHURE AND TO THE DOCUMENTS REQUIRED BY SECTION 718.503, FLORIDA STATUTES, TO BE FURNISHED BY A DEVELOPER TO A BUYER OR LESSEE.

