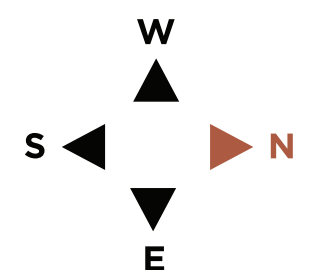
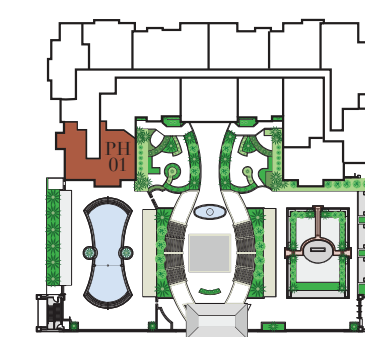


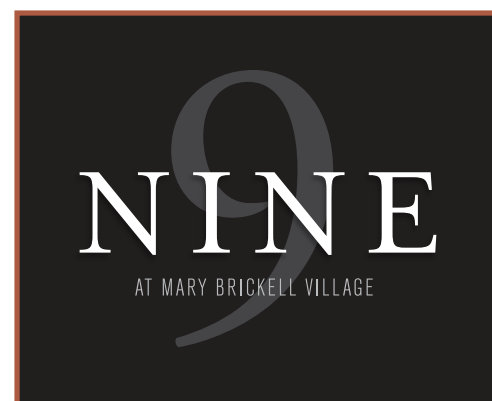
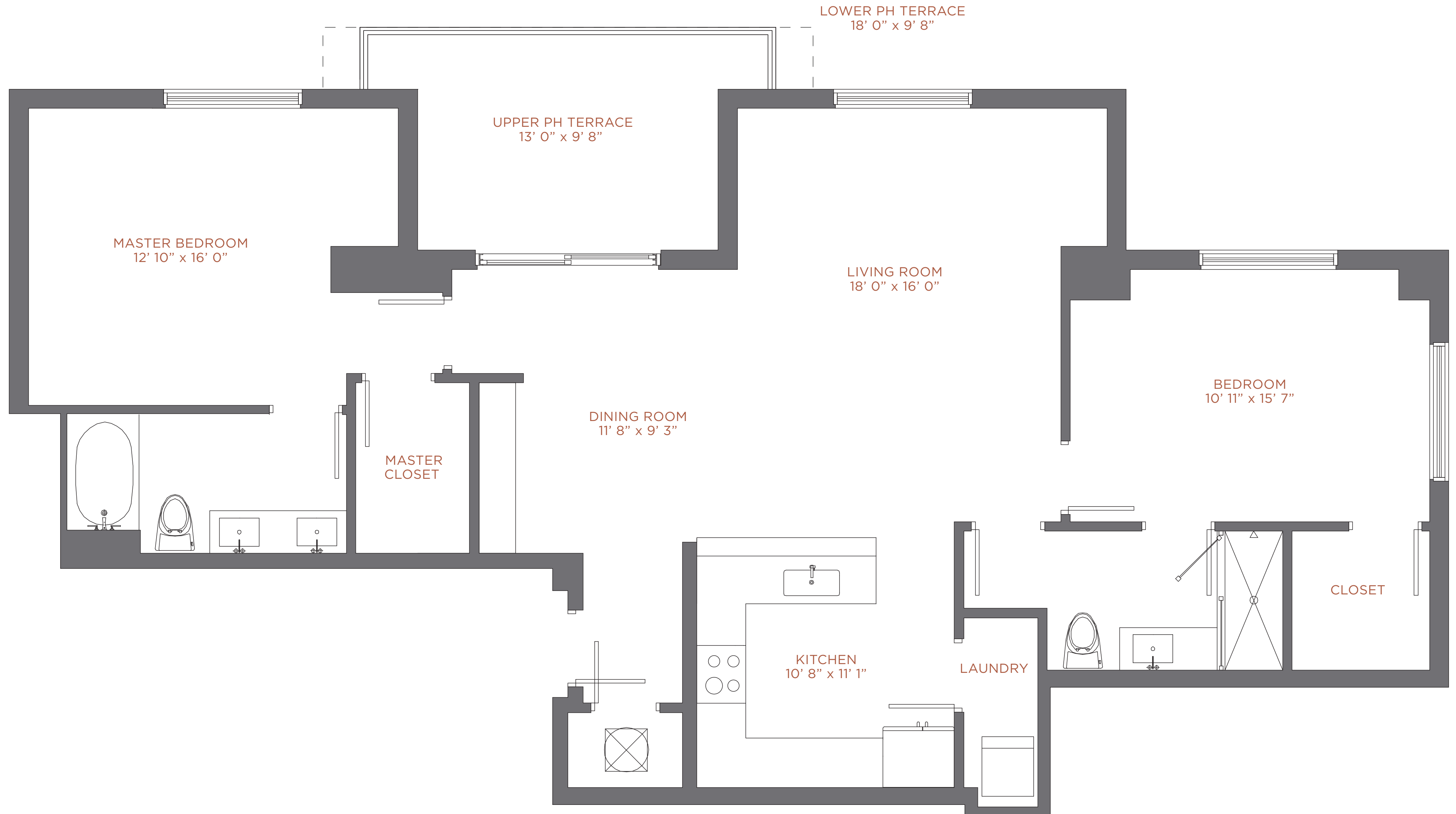
PENTHOUSE 01

Upper PH / Level 35
 Lower PH / Level 34
 3 Br / 3 Ba

	Upper PH		Lower PH	
Interior:	2,053 sqft	191 m ²	2,053 sqft	191 m ²
Terrace:	329 sqft	30 m ²	352 sqft	32 m ²
Total:	2,382 sqft	221 m²	2,405 sqft	223 m²

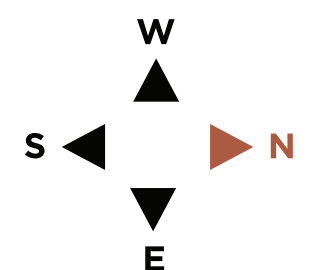
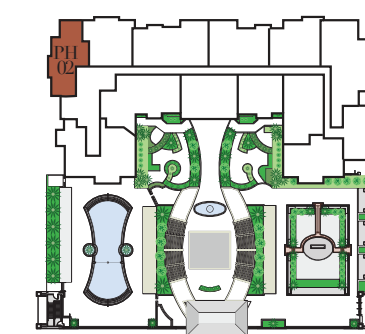


There are various methods for calculating the square footage of a condominium unit and depending upon the method of calculation, the quoted square footage of a condominium unit may vary. The square footages of the Unit shown herein are based upon the "Architectural Method" of measurement and stated dimensions are measured to the exterior boundaries of the exterior walls and the centerline of interior demising walls and in fact vary from the dimensions that would be determined by using the description and boundaries of the Unit set forth in the Declaration (which only includes the interior airspace between the perimeter walls and excludes interior structural components). Accordingly, the square footages stated herein are greater than those which would be derived by measuring only the interior area space for the Unit as described in the Declaration. Note that measurements of rooms set forth on this or plan are generally taken at the greatest points of each given room (as if the room were a perfect rectangle), without regard for any cutouts. Accordingly, the area of the actual room will typically be smaller than the product obtained by multiplying the stated length times width. All depictions of textures, appliances, counters, cabinetry, windows and other matters of detail, are conceptual only and subject to change or modification. Seller does not make, and specially disclaims, any representation or warranty as to the actual size, dimensions or square footage of the Unit. Purchaser should refer to the description and boundaries of the Unit set forth in the recorded Declaration and make its own determination as to the area and dimensions of the Unit. These drawings are conceptual only and are for the convenience of reference. All artist renderings are based on plans and concepts, which are subject to change without notice. All artist renderings are based on plans and concepts, which are subject to change without notice.

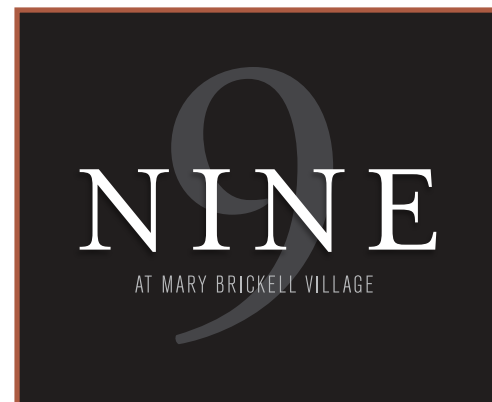
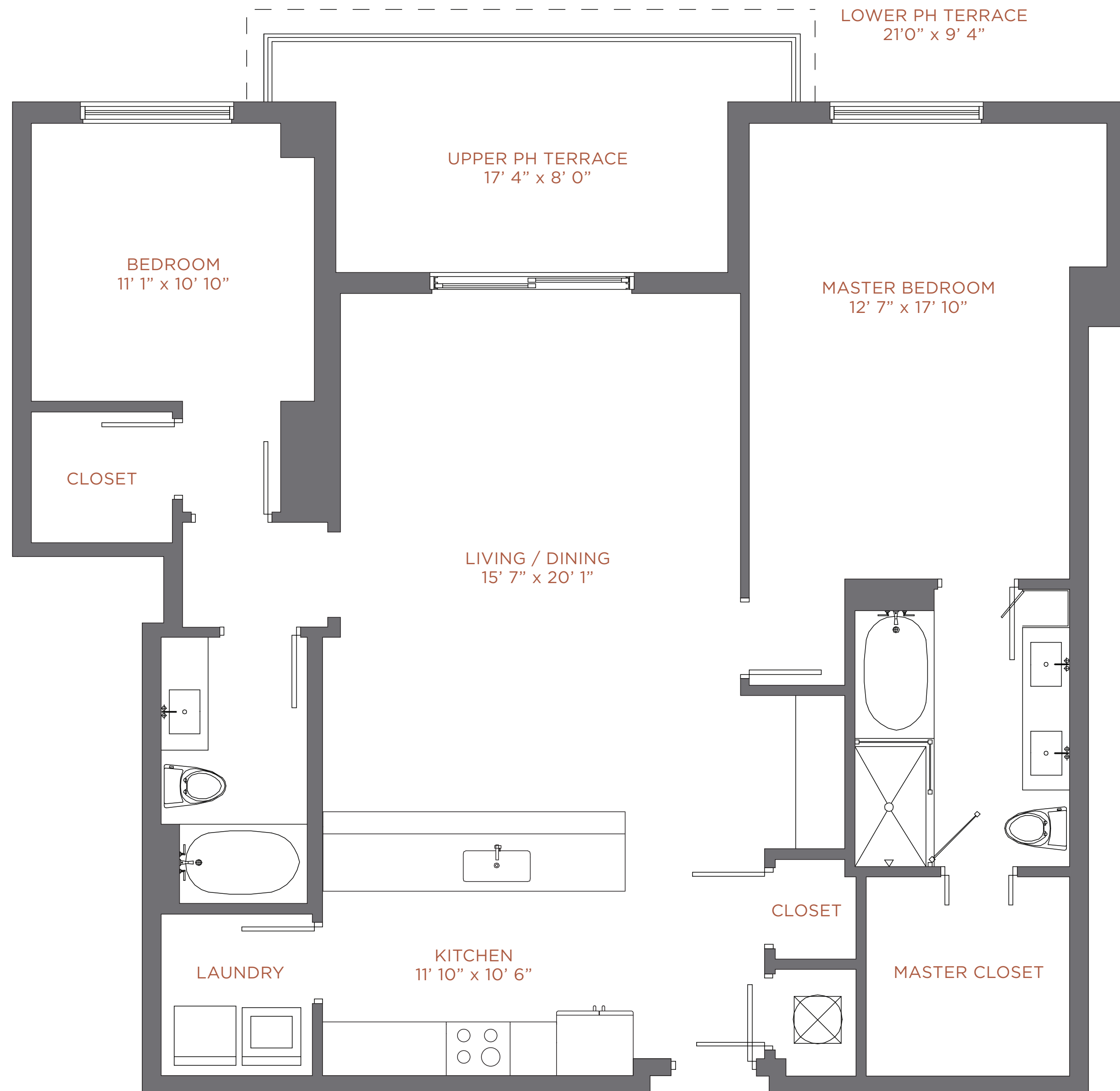


PENTHOUSE 02
 Upper PH / Level 35
 Lower PH / Level 34
 2 Br / 2 Ba

	Upper PH		Lower PH	
Interior:	1,366 sqft	127 m ²	1,366 sqft	127 m ²
Terrace:	125 sqft	12 m ²	139 sqft	13 m ²
Total:	1,491 sqft	139 m²	1,505 sqft	140 m²

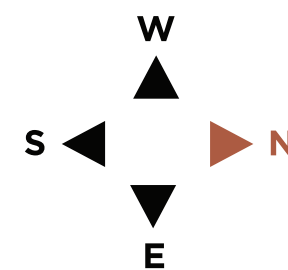
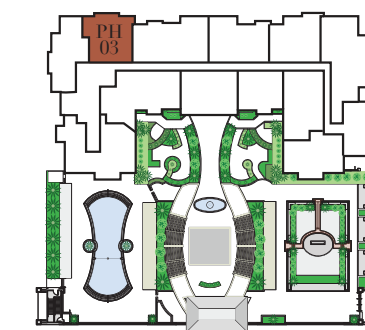


There are various methods for calculating the square footage of a condominium unit and depending upon the method of calculation, the quoted square footage of a condominium unit may vary. The square footages of the Unit shown herein are based upon the "Architectural Method" of measurement and stated dimensions are measured to the exterior boundaries of the exterior walls and the centerline of interior demising walls and in fact vary from the dimensions that would be determined by using the description and boundaries of the Unit set forth in the Declaration (which only includes the interior airspace between the perimeter walls and excludes interior structural components). Accordingly, the square footages stated herein are greater than those which would be derived by measuring only the interior area space for the Unit as the Unit is described in the Declaration. Note that measurements of rooms set forth on this or plan are generally taken at the greatest points of each given room (as if the room were a perfect rectangle), without regard for any cutouts. Accordingly, the area of the actual room will typically be smaller than the product obtained by multiplying the stated length times width. All depictions of textures, appliances, counters, cabinetry, windows and other matters of detail, are conceptual only and subject to change or modification. Seller does not make, and specially disclaims, any representation or warranty as to the actual size, dimensions or square footage of the Unit. Purchaser should refer to the description and boundaries of the Unit set forth in the recorded Declaration and make its own determination as to the area and dimensions of the Unit. These drawings are conceptual only and are for the convenience of reference. All artist renderings are based on plans and concepts, which are subject to change without notice. All artist renderings are based on plans and concepts, which are subject to change without notice.

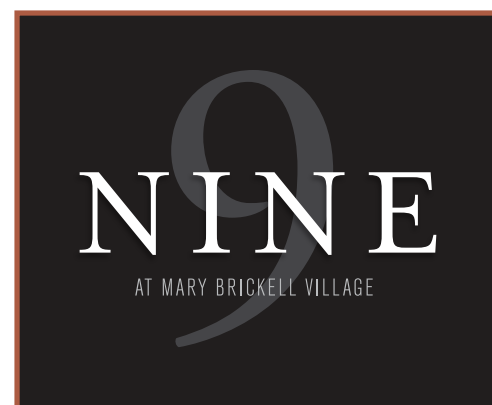
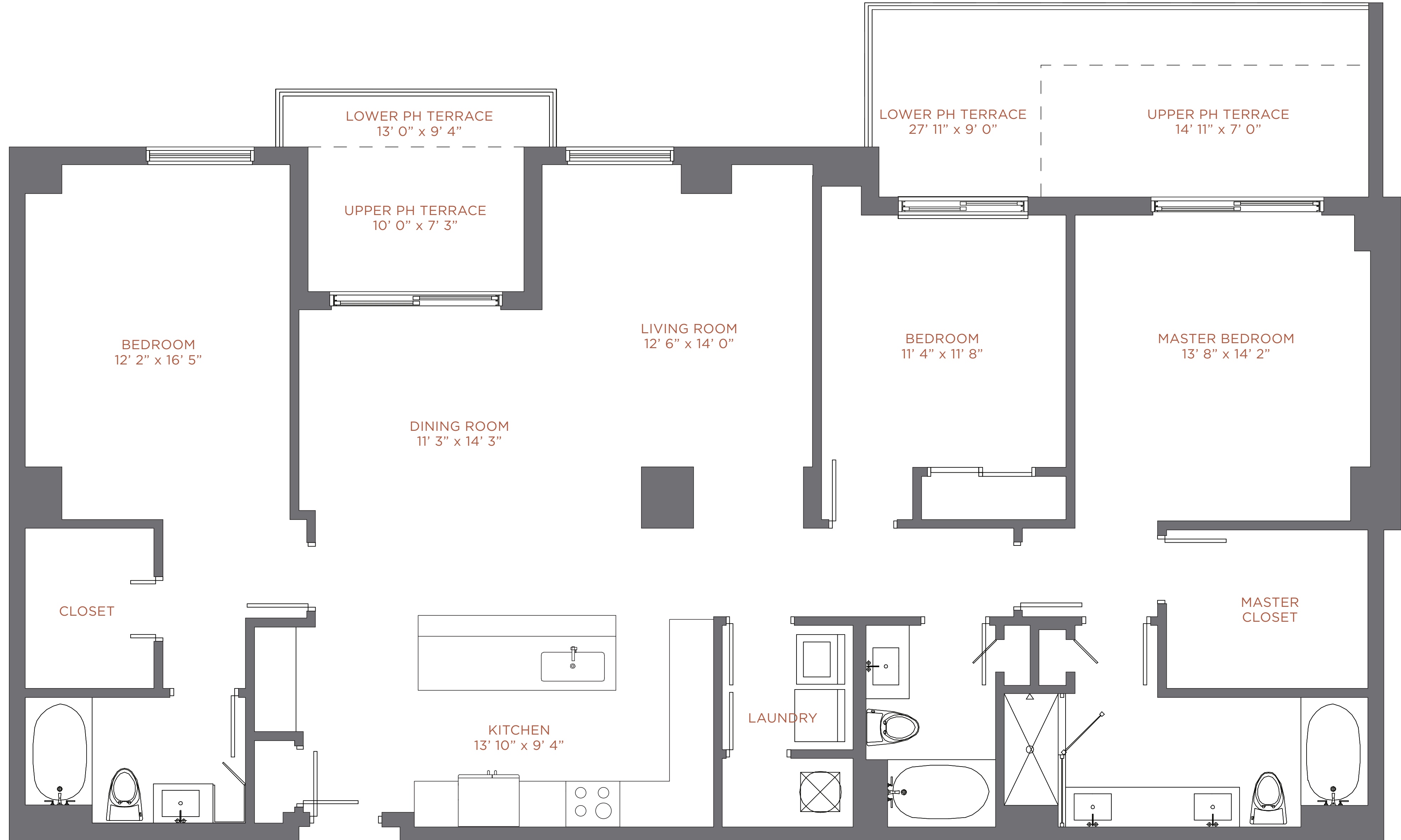


PENTHOUSE 03
 Upper PH / Level 35
 Lower PH / Level 34
 2 Br / 2 Ba

	Upper PH	Lower PH
Interior:	1,391 sqft 129 m ²	1,391 sqft 129 m ²
Terrace:	125 sqft 12 m ²	158 sqft 15 m ²
Total:	1,516 sqft 141 m²	1,549 sqft 144 m²



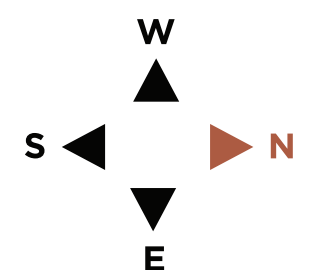
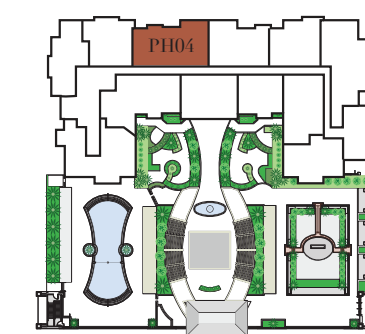
There are various methods for calculating the square footage of a condominium unit and depending upon the method of calculation, the quoted square footage of a condominium unit may vary. The square footages of the Unit shown herein are based upon the "Architectural Method" of measurement and stated dimensions are measured to the exterior boundaries of the exterior walls and the centerline of interior demising walls and in fact vary from the dimensions that would be determined by using the description and boundaries of the Unit set forth in the Declaration (which only includes the interior airspace between the perimeter walls and excludes interior structural components). Accordingly, the square footages stated herein are greater than those which would be derived by measuring only the interior area space for the Unit as the Unit is described in the Declaration. Note that measurements of rooms set forth on this or plan are generally taken at the greatest points of each given room (as if the room were a perfect rectangle), without regard for any cutouts. Accordingly, the area of the actual room will typically be smaller than the product obtained by multiplying the stated length times width. All depictions of textures, appliances, counters, cabinetry, windows and other matters of detail, are conceptual only and subject to change or modification. Seller does not make, and specially disclaims, any representation or warranty as to the actual size, dimensions or square footage of the Unit. Purchaser should refer to the description and boundaries of the Unit set forth in the recorded Declaration and make its own determination as to the area and dimensions of the Unit. These drawings are conceptual only and are for the convenience of reference. All artist renderings are based on plans and concepts, which are subject to change without notice. All artist renderings are based on plans and concepts, which are subject to change without notice.



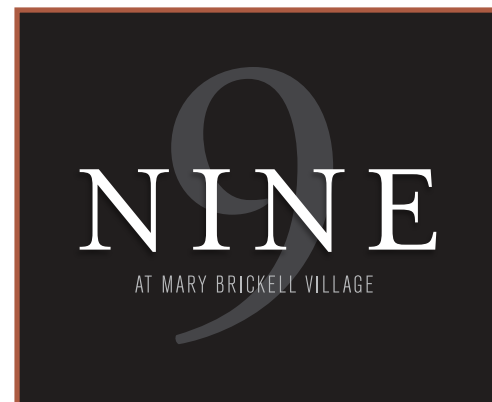
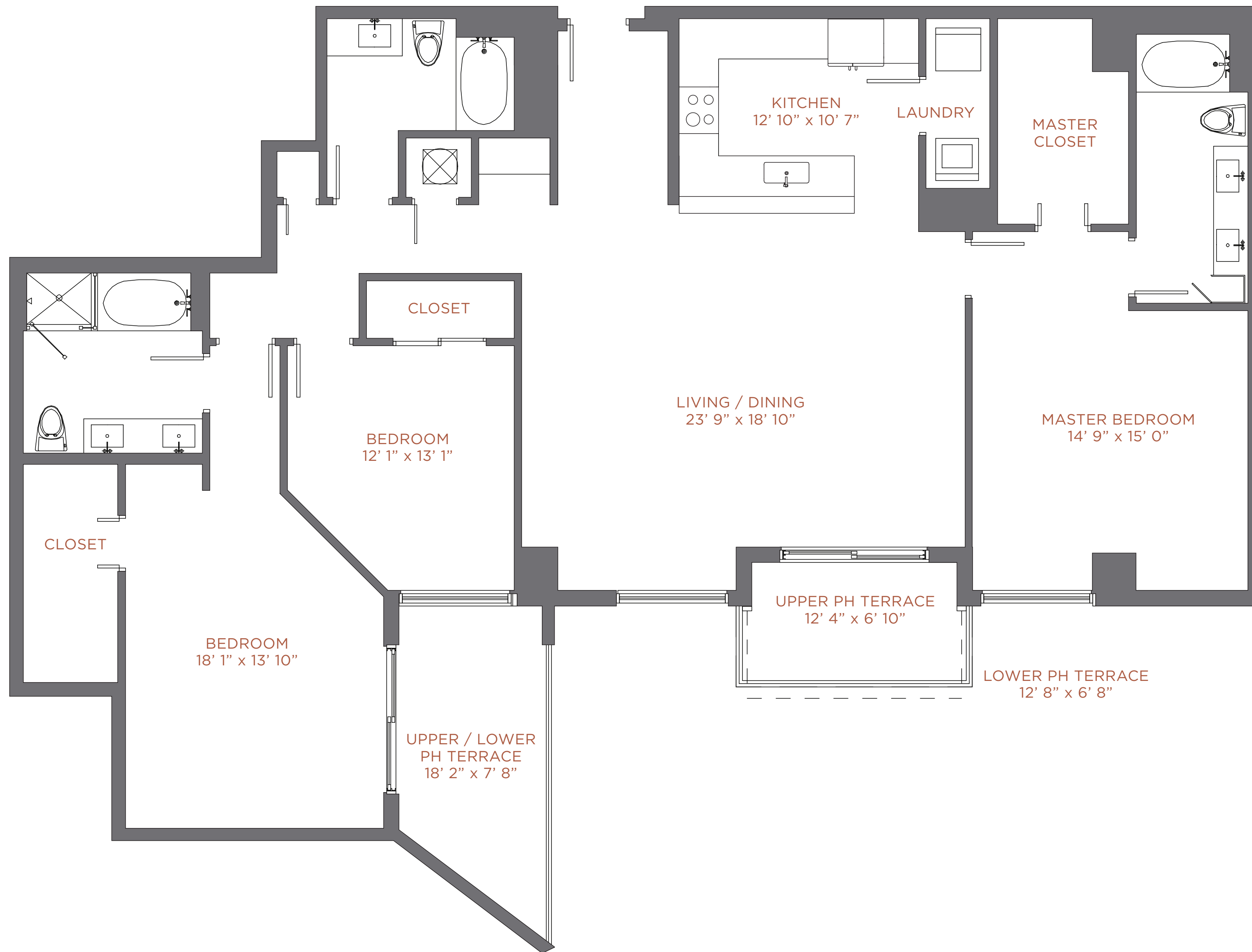
PENTHOUSE 04

Upper PH / Level 35
 Lower PH / Level 34
 3 Br / 3 Ba

	Upper PH		Lower PH	
Interior:	1,883 sqft	175 m ²	1,883 sqft	175 m ²
Terrace:	176 sqft	16 m ²	352 sqft	33 m ²
Total:	2,059 sqft	191 m²	2,235 sqft	208 m²



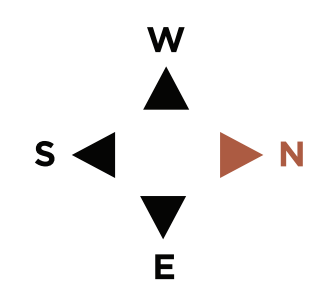
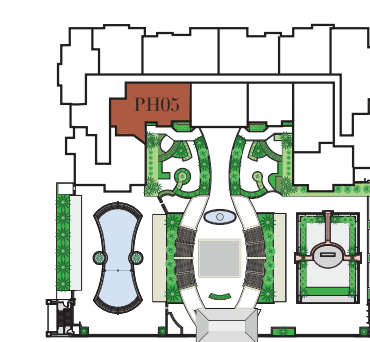
There are various methods for calculating the square footage of a condominium unit and depending upon the method of calculation, the quoted square footage of a condominium unit may vary. The square footages of the Unit shown herein are based upon the "Architectural Method" of measurement and stated dimensions are measured to the exterior boundaries of the exterior walls and the centerline of interior demising walls and in fact vary from the dimensions that would be determined by using the description and boundaries of the Unit set forth in the Declaration (which only includes the interior airspace between the perimeter walls and excludes interior structural components). Accordingly, the square footages stated herein are greater than those which would be derived by measuring only the interior area space for the Unit as described in the Declaration. Note that measurements of rooms set forth on this or plan are generally taken at the greatest points of each given room (as if the room were a perfect rectangle), without regard for any cutouts. Accordingly, the area of the actual room will typically be smaller than the product obtained by multiplying the stated length times width. All depictions of textures, appliances, counters, cabinetry, windows and other matters of detail, are conceptual only and subject to change or modification. Seller does not make, and specially disclaims, any representation or warranty as to the actual size, dimensions or square footage of the Unit. Purchaser should refer to the description and boundaries of the Unit set forth in the recorded Declaration and make its own determination as to the area and dimensions of the Unit. These drawings are conceptual only and are for the convenience of reference. All artist renderings are based on plans and concepts, which are subject to change without notice.



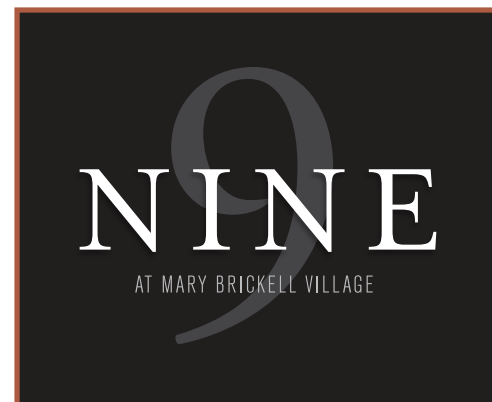
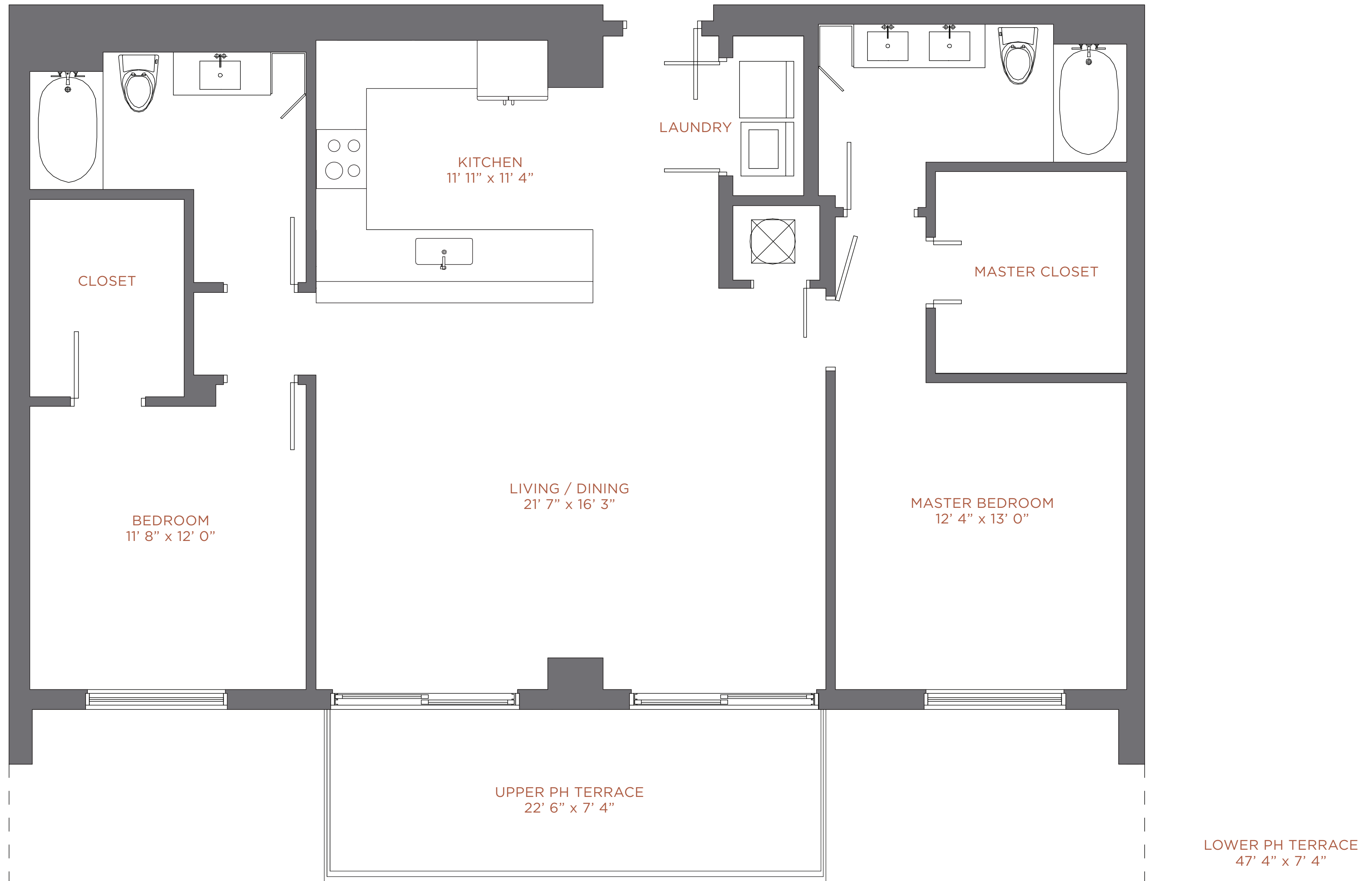
PENTHOUSE 05

Upper PH / Level 35
 Lower PH / Level 34
 3 Br / 3 Ba

	Upper PH		Lower PH	
Interior:	2,098 sqft	195 m ²	2,098 sqft	195 m ²
Terrace:	203 sqft	19 m ²	202 sqft	19 m ²
Total:	2,301 sqft	214 m²	2,300 sqft	214 m²

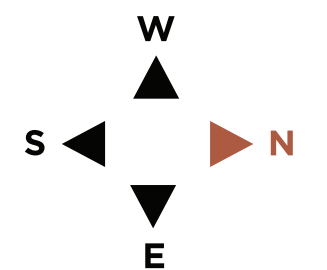
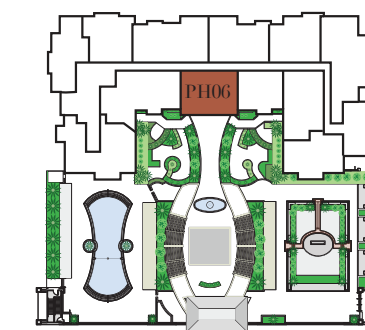


There are various methods for calculating the square footage of a condominium unit and depending upon the method of calculation, the quoted square footage of a condominium unit may vary. The square footages of the Unit shown herein are based upon the "Architectural Method" of measurement and stated dimensions are measured to the exterior boundaries of the exterior walls and the centerline of interior demising walls and in fact vary from the dimensions that would be determined by using the description and boundaries of the Unit set forth in the Declaration (which only includes the interior airspace between the perimeter walls and excludes interior structural components). Accordingly, the square footages stated herein are greater than those which would be derived by measuring only the interior area space for the Unit as the Unit is described in the Declaration. Note that measurements of rooms set forth on this or plan are generally taken at the greatest points of each given room (as if the room were a perfect rectangle), without regard for any cutouts. Accordingly, the area of the actual room will typically be smaller than the product obtained by multiplying the stated length times width. All depictions of textures, appliances, counters, cabinetry, windows and other matters of detail, are conceptual only and subject to change or modification. Seller does not make, and specially disclaims, any representation or warranty as to the actual size, dimensions or square footage of the Unit. Purchaser should refer to the description and boundaries of the Unit set forth in the recorded Declaration and make its own determination as to the area and dimensions of the Unit. These drawings are conceptual only and are for the convenience of reference. All artist renderings are based on plans and concepts, which are subject to change without notice. All artist renderings are based on plans and concepts, which are subject to change without notice.

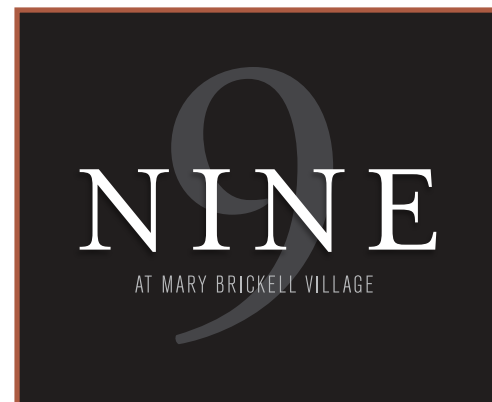
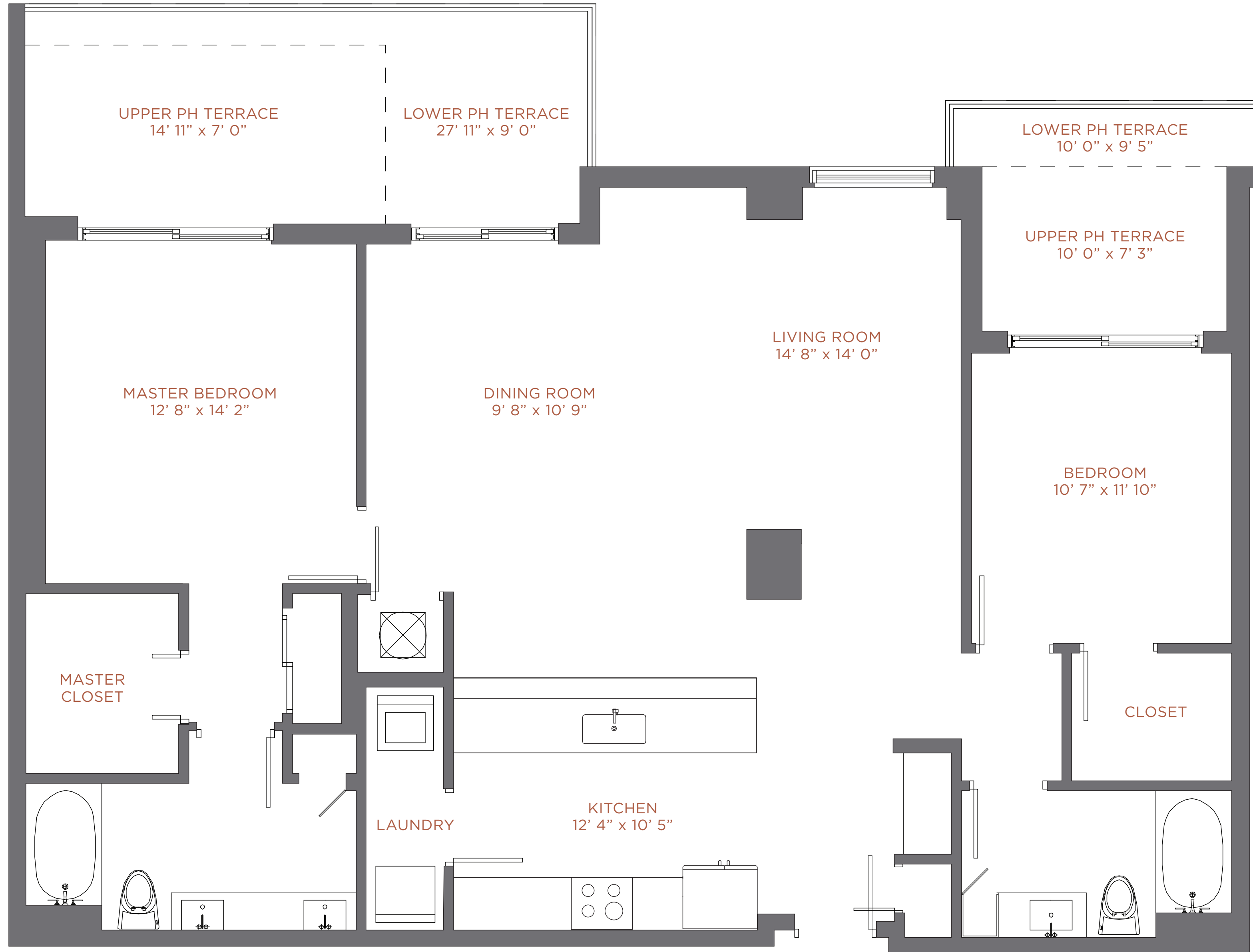


PENTHOUSE 06
 Upper PH / Level 35
 Lower PH / Level 34
 2 Br / 2 Ba

	Upper PH		Lower PH	
Interior:	1,372 sqft	127 m ²	1,372 sqft	127 m ²
Terrace:	165 sqft	16 m ²	344 sqft	32 m ²
Total:	1,537 sqft	143 m²	1,716 sqft	159 m²



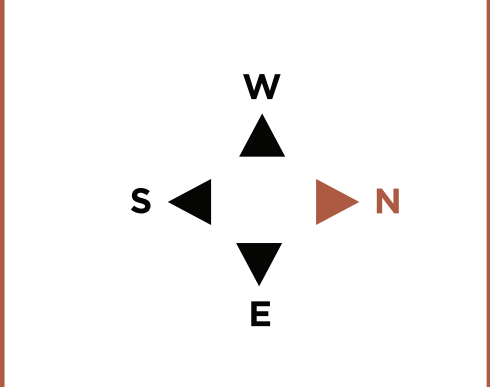
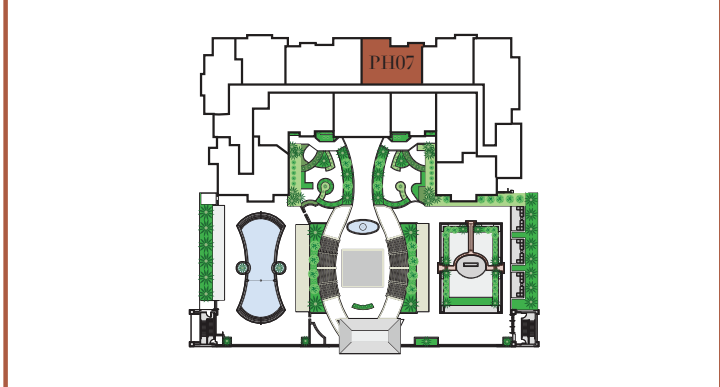
There are various methods for calculating the square footage of a condominium unit and depending upon the method of calculation, the quoted square footage of a condominium unit may vary. The square footages of the Unit shown herein are based upon the "Architectural Method" of measurement and stated dimensions are measured to the exterior boundaries of the exterior walls and the centerline of interior demising walls and in fact vary from the dimensions that would be determined by using the description and boundaries of the Unit set forth in the Declaration (which only includes the interior airspace between the perimeter walls and excludes interior structural components). Accordingly, the square footages stated herein are greater than those which would be derived by measuring only the interior area space for the Unit as the Unit is described in the Declaration. Note that measurements of rooms set forth on this or plan are generally taken at the greatest points of each given room (as if the room were a perfect rectangle), without regard for any cutouts. Accordingly, the area of the actual room will typically be smaller than the product obtained by multiplying the stated length times width. All depictions of textures, appliances, counters, cabinetry, windows and other matters of detail, are conceptual only and subject to change or modification. Seller does not make, and specially disclaims, any representation or warranty as to the actual size, dimensions or square footage of the Unit. Purchaser should refer to the description and boundaries of the Unit set forth in the recorded Declaration and make its own determination as to the area and dimensions of the Unit. These drawings are conceptual only and are for the convenience of reference. All artist renderings are based on plans and concepts, which are subject to change without notice. All artist renderings are based on plans and concepts, which are subject to change without notice.



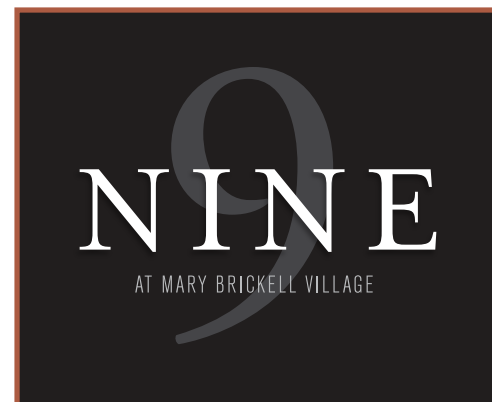
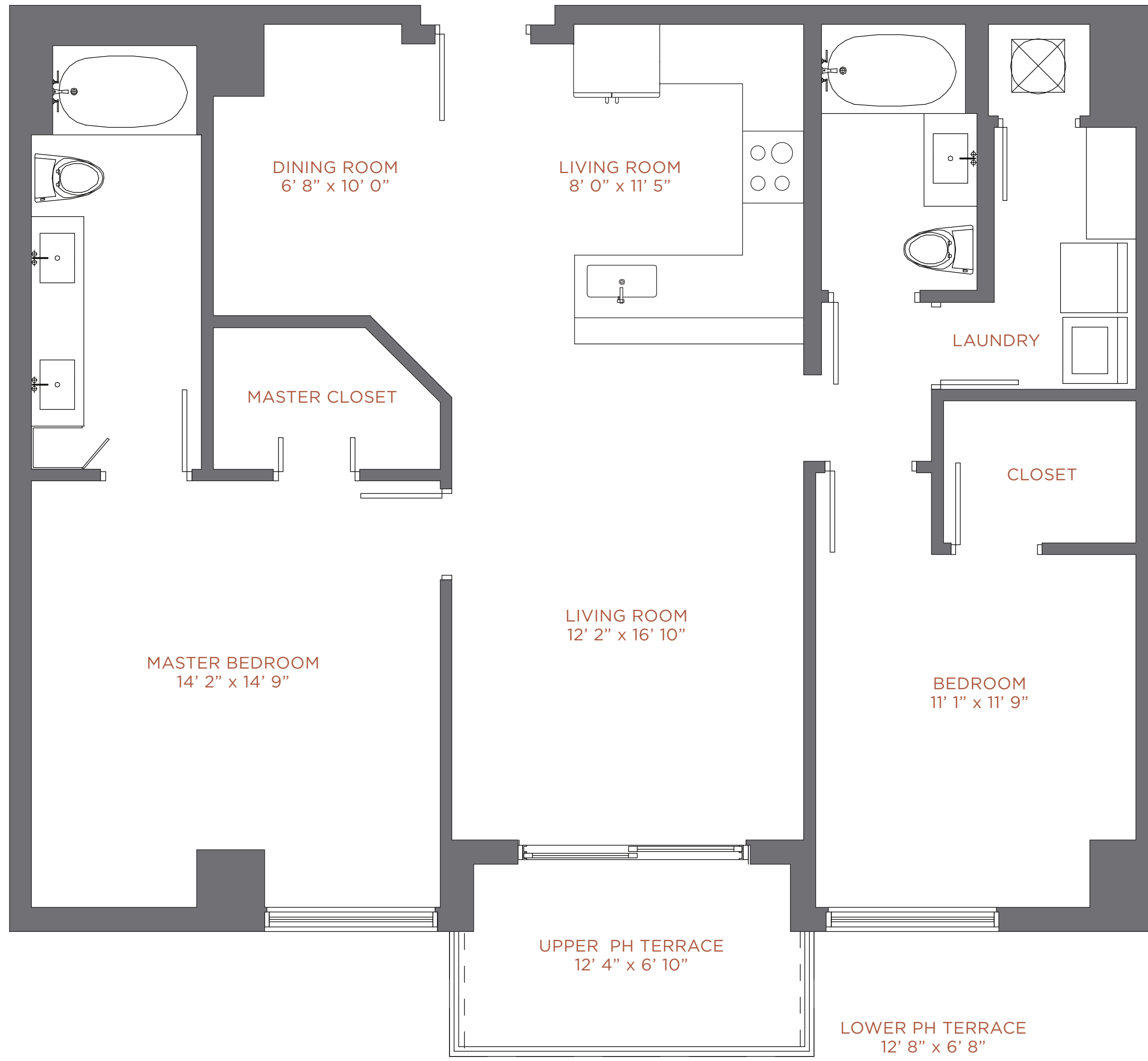
PENTHOUSE 07

Upper PH / Level 35
 Lower PH / Level 34
 2 Br / 2 Ba

	Upper PH		Lower PH	
Interior:	1,457 sqft	135 m ²	1,457 sqft	135 m ²
Terrace:	176 sqft	17 m ²	352 sqft	33 m ²
Total:	1,633 sqft	152 m²	1,809 sqft	168 m²

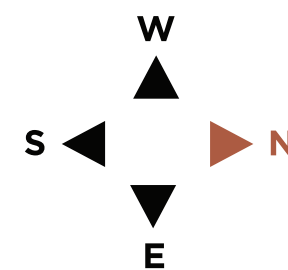
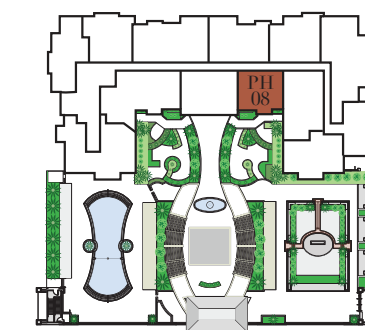


There are various methods for calculating the square footage of a condominium unit and depending upon the method of calculation, the quoted square footage of a condominium unit may vary. The square footages of the Unit shown herein are based upon the "Architectural Method" of measurement and stated dimensions are measured to the exterior boundaries of the exterior walls and the centerline of interior demising walls and in fact vary from the dimensions that would be determined by using the description and boundaries of the Unit set forth in the Declaration (which only includes the interior airspace between the perimeter walls and excludes interior structural components). Accordingly, the square footages stated herein are greater than those which would be derived by measuring only the interior area space for the Unit as the Unit is described in the Declaration. Note that measurements of rooms set forth on this or plan are generally taken at the greatest points of each given room (as if the room were a perfect rectangle), without regard for any cutouts. Accordingly, the area of the actual room will typically be smaller than the product obtained by multiplying the stated length times width. All depictions of textures, appliances, counters, cabinetry, windows and other matters of detail, are conceptual only and subject to change or modification. Seller does not make, and specially disclaims, any representation or warranty as to the actual size, dimensions or square footage of the Unit. Purchaser should refer to the description and boundaries of the Unit set forth in the recorded Declaration and make its own determination as to the area and dimensions of the Unit. These drawings are conceptual only and are for the convenience of reference. All artist renderings are based on plans and concepts, which are subject to change without notice.

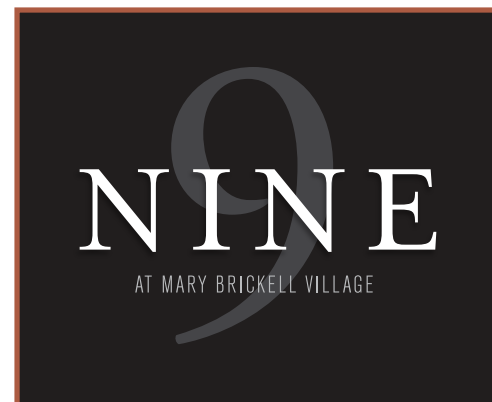
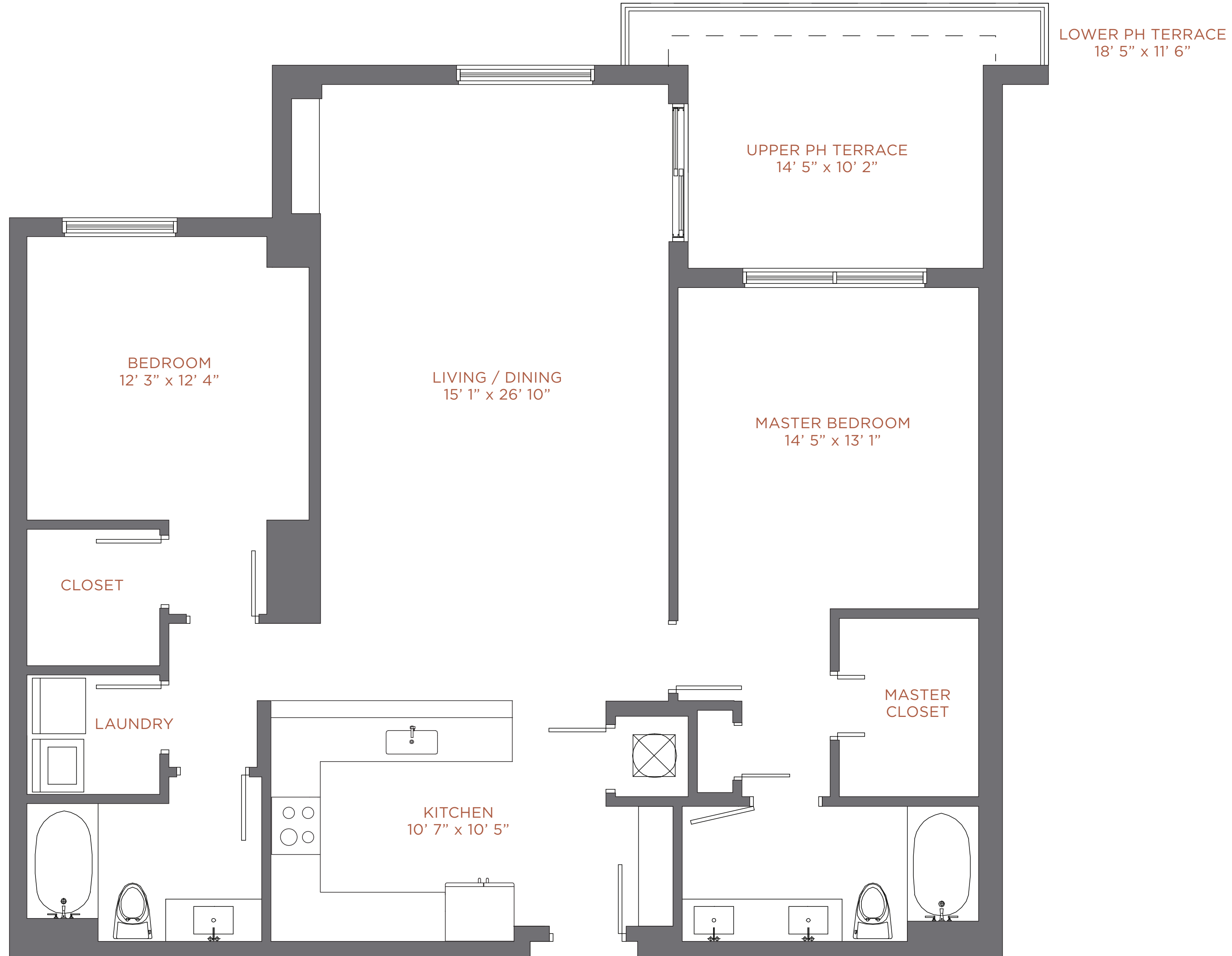


PENTHOUSE 08
 Upper PH / Level 35
 Lower PH / Level 34
 2 Br / 2 Ba

	Upper PH		Lower PH	
Interior:	1,215 sqft	113 m ²	1,215 sqft	113 m ²
Terrace:	81 sqft	7 m ²	80 sqft	7 m ²
Total:	1,296 sqft	120 m²	1,295 sqft	120 m²



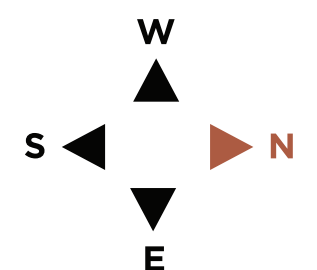
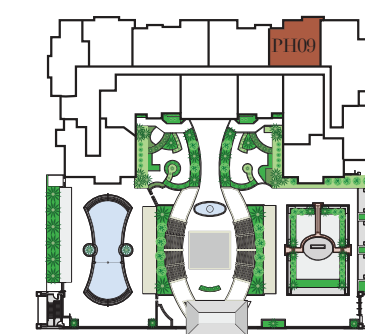
There are various methods for calculating the square footage of a condominium unit and depending upon the method of calculation, the quoted square footage of a condominium unit may vary. The square footages of the Unit shown herein are based upon the "Architectural Method" of measurement and stated dimensions are measured to the exterior boundaries of the exterior walls and the centerline of interior demising walls and in fact vary from the dimensions that would be determined by using the description and boundaries of the Unit set forth in the Declaration (which only includes the interior airspace between the perimeter walls and excludes interior structural components). Accordingly, the square footages stated herein are greater than those which would be derived by measuring only the interior area space for the Unit as the Unit is described in the Declaration. Note that measurements of rooms set forth on this or plan are generally taken at the greatest points of each given room (as if the room were a perfect rectangle), without regard for any cutouts. Accordingly, the area of the actual room will typically be smaller than the product obtained by multiplying the stated length times width. All depictions of textures, appliances, counters, cabinetry, windows and other matters of detail, are conceptual only and subject to change or modification. Seller does not make, and specially disclaims, any representation or warranty as to the actual size, dimensions or square footage of the Unit. Purchaser should refer to the description and boundaries of the Unit set forth in the recorded Declaration and make its own determination as to the area and dimensions of the Unit. These drawings are conceptual only and are for the convenience of reference. All artist renderings are based on plans and concepts, which are subject to change without notice. All artist renderings are based on plans and concepts, which are subject to change without notice.



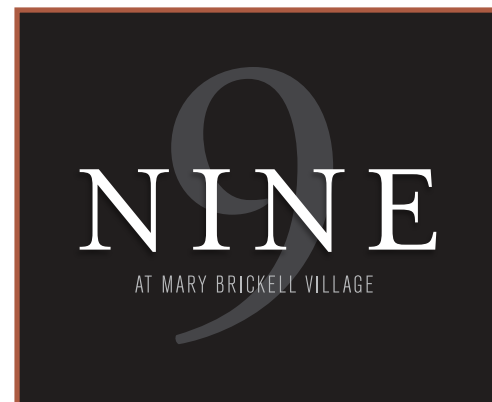
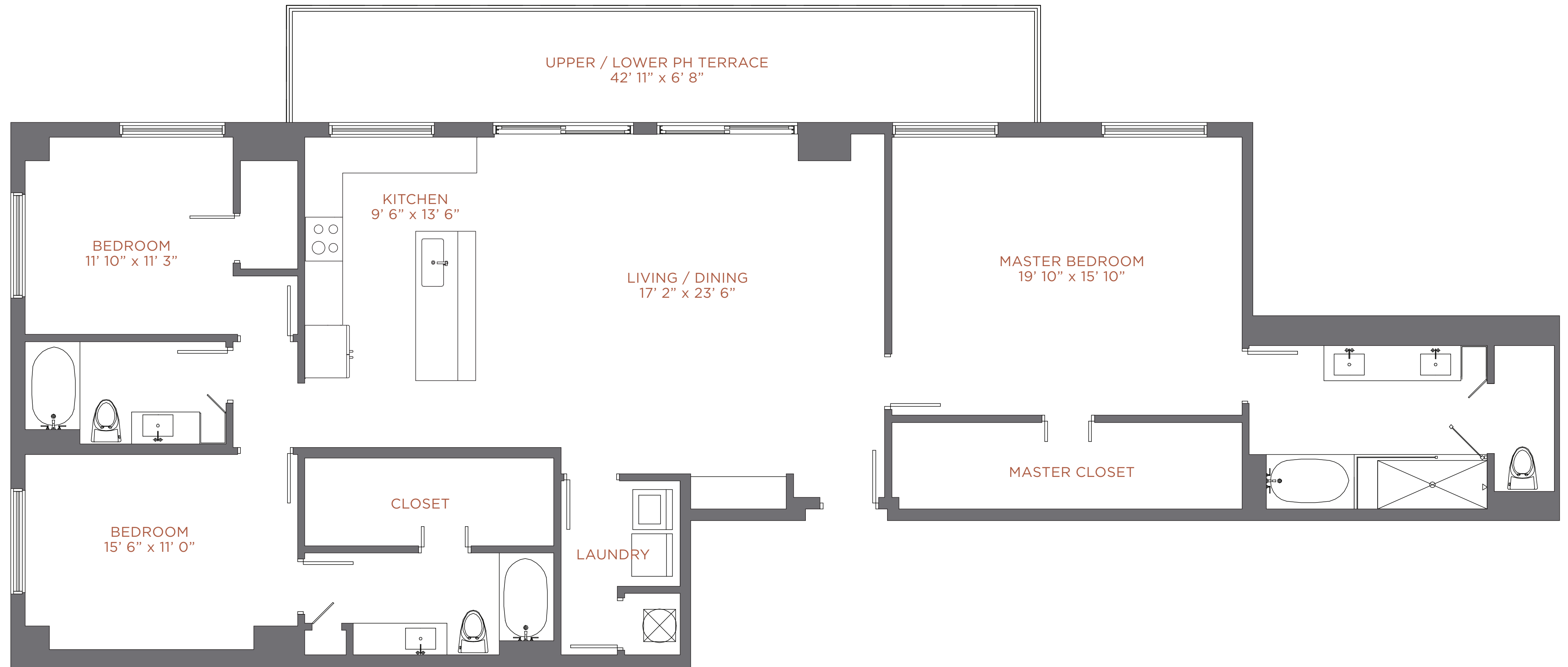
PENTHOUSE 09

Upper PH / Level 35
 Lower PH / Level 34
 2 Br / 2 Ba

	Upper PH		Lower PH	
Interior:	1,434 sqft	133 m ²	1,434 sqft	133 m ²
Terrace:	132 sqft	12 m ²	163 sqft	15 m ²
Total:	1,566 sqft	145 m²	1,597 sqft	148 m²

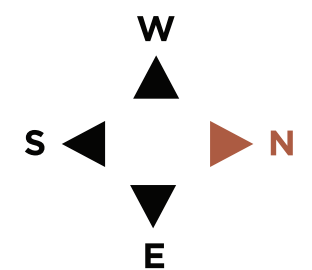
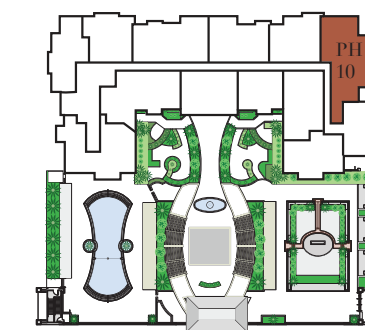


There are various methods for calculating the square footage of a condominium unit and depending upon the method of calculation, the quoted square footage of a condominium unit may vary. The square footages of the Unit shown herein are based upon the "Architectural Method" of measurement and stated dimensions are measured to the exterior boundaries of the exterior walls and the centerline of interior demising walls and in fact vary from the dimensions that would be determined by using the description and boundaries of the Unit set forth in the Declaration (which only includes the interior airspace between the perimeter walls and excludes interior structural components). Accordingly, the square footages stated herein are greater than those which would be derived by measuring only the interior area space for the Unit as described in the Declaration. Note that measurements of rooms set forth on this or plan are generally taken at the greatest points of each given room (as if the room were a perfect rectangle), without regard for any cutouts. Accordingly, the area of the actual room will typically be smaller than the product obtained by multiplying the stated length times width. All depictions of textures, appliances, counters, cabinetry, windows and other matters of detail, are conceptual only and subject to change or modification. Seller does not make, and specially disclaims, any representation or warranty as to the actual size, dimensions or square footage of the Unit. Purchaser should refer to the description and boundaries of the Unit set forth in the recorded Declaration and make its own determination as to the area and dimensions of the Unit. These drawings are conceptual only and are for the convenience of reference. All artist renderings are based on plans and concepts, which are subject to change without notice.

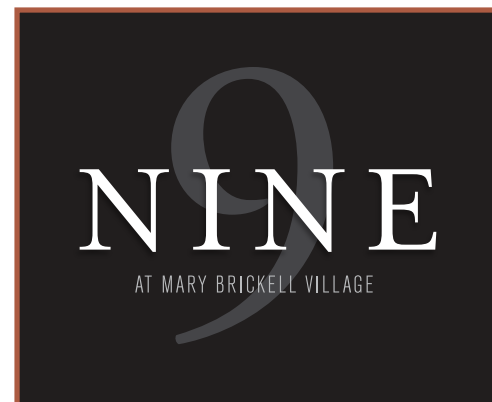
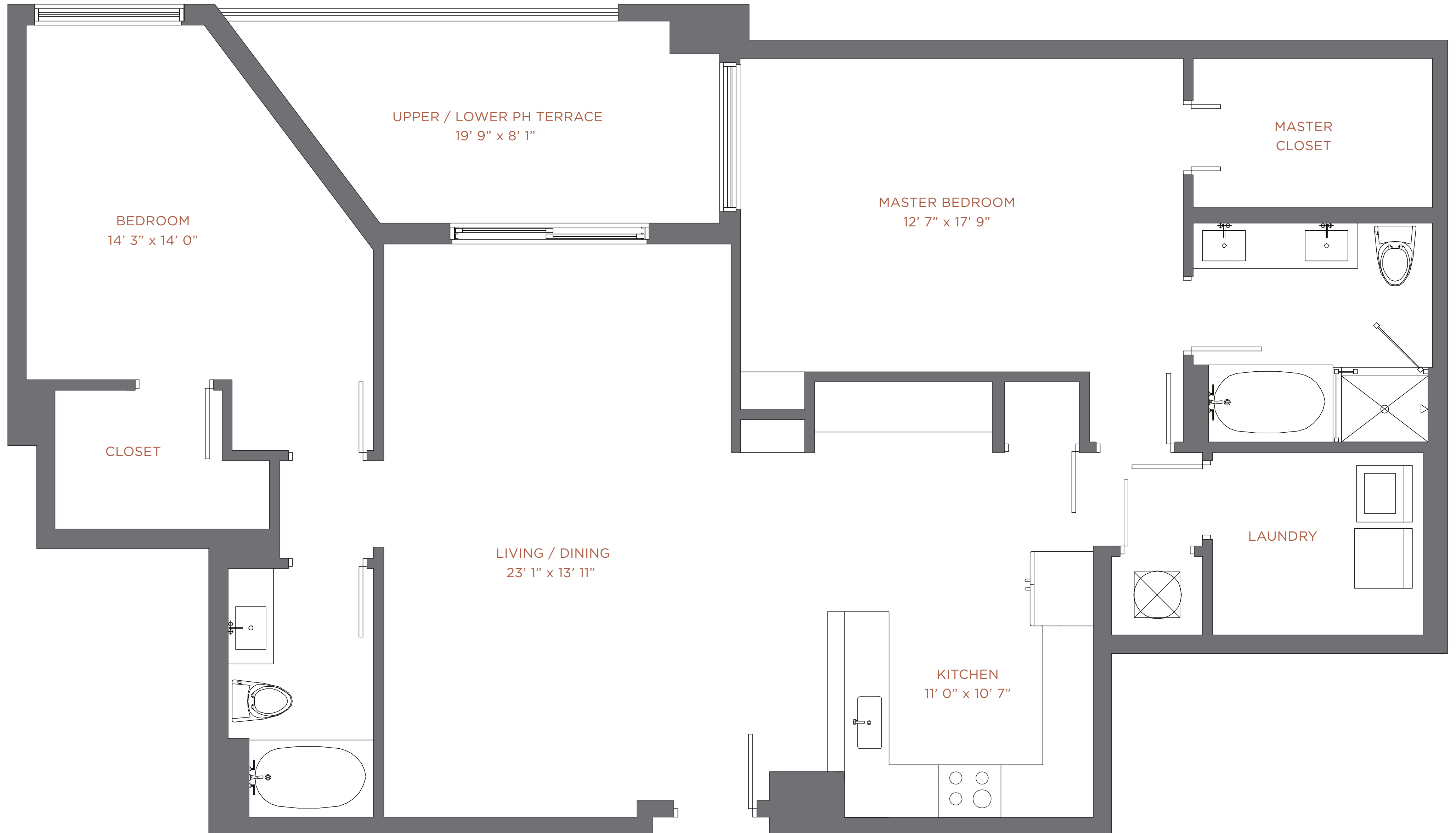


PENTHOUSE 10
 Upper PH / Level 35
 Lower PH / Level 34
 3 Br / 3 Ba

	Upper PH		Lower PH	
Interior:	2,084 sqft	194 m ²	2,084 sqft	194 m ²
Terrace:	286 sqft	26 m ²	286 sqft	26 m ²
Total:	2,370 sqft	220 m²	2,370 sqft	220 m²

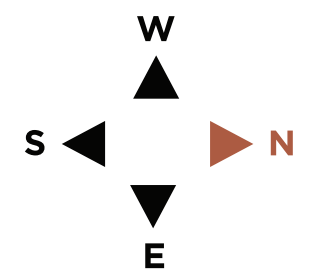
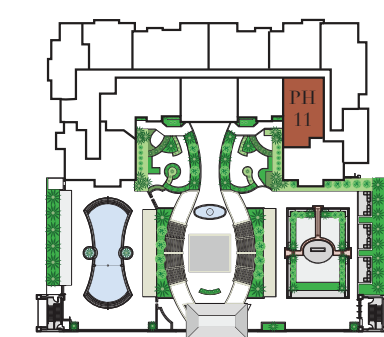


There are various methods for calculating the square footage of a condominium unit and depending upon the method of calculation, the quoted square footage of a condominium unit may vary. The square footages of the Unit shown herein are based upon the "Architectural Method" of measurement and stated dimensions are measured to the exterior boundaries of the exterior walls and the centerline of interior demising walls and in fact vary from the dimensions that would be determined by using the description and boundaries of the Unit set forth in the Declaration (which only includes the interior airspace between the perimeter walls and excludes interior structural components). Accordingly, the square footages stated herein are greater than those which would be derived by measuring only the interior area space for the Unit as the Unit is described in the Declaration. Note that measurements of rooms set forth on this or plan are generally taken at the greatest points of each given room (as if the room were a perfect rectangle), without regard for any cutouts. Accordingly, the area of the actual room will typically be smaller than the product obtained by multiplying the stated length times width. All depictions of textures, appliances, counters, cabinetry, windows and other matters of detail, are conceptual only and subject to change or modification. Seller does not make, and specially disclaims, any representation or warranty as to the actual size, dimensions or square footage of the Unit. Purchaser should refer to the description and boundaries of the Unit set forth in the recorded Declaration and make its own determination as to the area and dimensions of the Unit. These drawings are conceptual only and are for the convenience of reference. All artist renderings are based on plans and concepts, which are subject to change without notice. All artist renderings are based on plans and concepts, which are subject to change without notice.

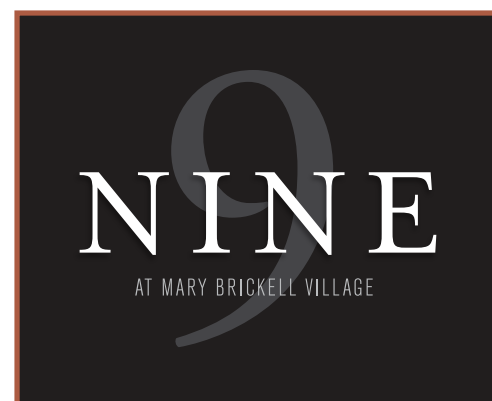
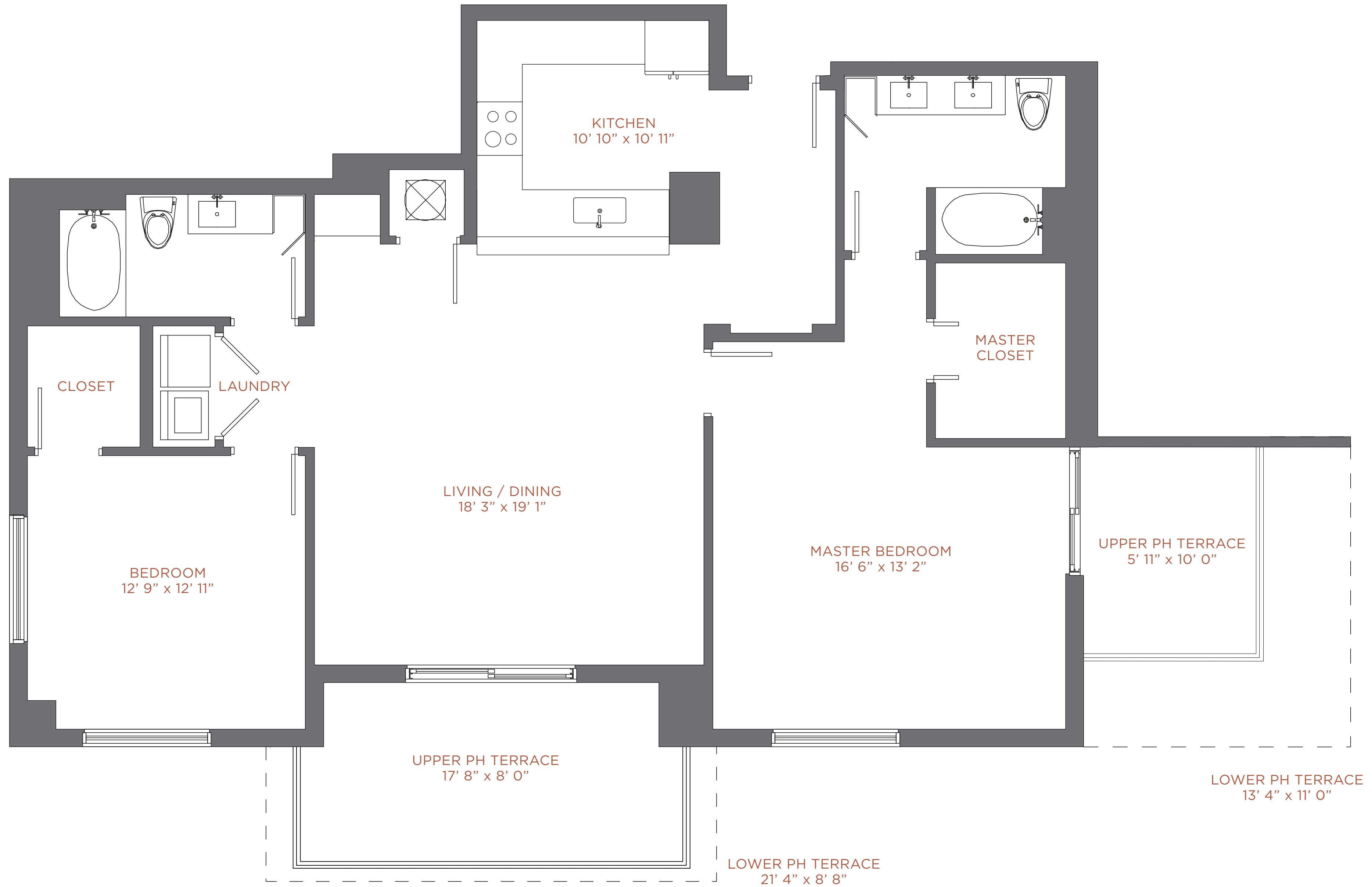


PENTHOUSE 11
 Upper PH / Level 35
 Lower PH / Level 34
 2 Br / 2 Ba

	Upper PH	Lower PH
Interior:	1,445 sqft 134 m ²	1,445 sqft 134 m ²
Terrace:	194 sqft 18 m ²	307 sqft 29 m ²
Total:	1,639 sqft 152 m²	1,752 sqft 163 m²



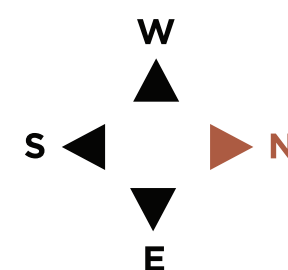
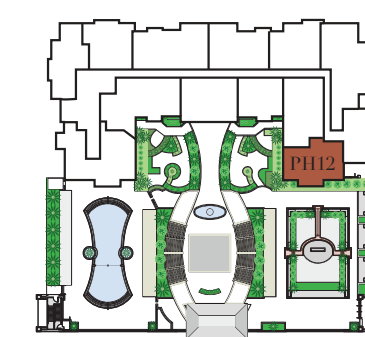
There are various methods for calculating the square footage of a condominium unit and depending upon the method of calculation, the quoted square footage of a condominium unit may vary. The square footages of the Unit shown herein are based upon the "Architectural Method" of measurement and stated dimensions are measured to the exterior boundaries of the exterior walls and the centerline of interior demising walls and in fact vary from the dimensions that would be determined by using the description and boundaries of the Unit set forth in the Declaration (which only includes the interior airspace between the perimeter walls and excludes interior structural components). Accordingly, the square footages stated herein are greater than those which would be derived by measuring only the interior area space for the Unit as the Unit is described in the Declaration. Note that measurements of rooms set forth on this or plan are generally taken at the greatest points of each given room (as if the room were a perfect rectangle), without regard for any cutouts. Accordingly, the area of the actual room will typically be smaller than the product obtained by multiplying the stated length times width. All depictions of textures, appliances, counters, cabinetry, windows and other matters of detail, are conceptual only and subject to change or modification. Seller does not make, and specially disclaims, any representation or warranty as to the actual size, dimensions or square footage of the Unit. Purchaser should refer to the description and boundaries of the Unit set forth in the recorded Declaration and make its own determination as to the area and dimensions of the Unit. These drawings are conceptual only and are for the convenience of reference. All artist renderings are based on plans and concepts, which are subject to change without notice. All artist renderings are based on plans and concepts, which are subject to change without notice.



PENTHOUSE 12

Upper PH / Level 35
Lower PH / Level 34
2 Br / 2 Ba

	Upper PH		Lower PH	
Interior:	1,445 sqft	134 m ²	1,445 sqft	134 m ²
Terrace:	194 sqft	18 m ²	307 sqft	29 m ²
Total:	1,639 sqft	152 m²	1,752 sqft	163 m²



There are various methods for calculating the square footage of a condominium unit and depending upon the method of calculation, the quoted square footage of a condominium unit may vary. The square footages of the Unit shown herein are based upon the "Architectural Method" of measurement and stated dimensions are measured to the exterior boundaries of the exterior walls and the centerline of interior demising walls and in fact vary from the dimensions that would be determined by using the description and boundaries of the Unit set forth in the Declaration (which only includes the interior airspace between the perimeter walls and excludes interior structural components). Accordingly, the square footages stated herein are greater than those which would be derived by measuring only the interior area space for the Unit as described in the Declaration. Note that measurements of rooms set forth on this or plan are generally taken at the greatest points of each given room (as if the room were a perfect rectangle), without regard for any cutouts. Accordingly, the area of the actual room will typically be smaller than the product obtained by multiplying the stated length times width. All depictions of textures, appliances, counters, cabinetry, windows and other matters of detail, are conceptual only and subject to change or modification. Seller does not make, and specially disclaims, any representation or warranty as to the actual size, dimensions or square footage of the Unit. Purchaser should refer to the description and boundaries of the Unit set forth in the recorded Declaration and make its own determination as to the area and dimensions of the Unit. These drawings are conceptual only and are for the convenience of reference. All artist renderings are based on plans and concepts, which are subject to change without notice. All artist renderings are based on plans and concepts, which are subject to change without notice.