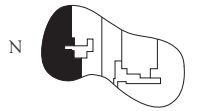




THE RITZ-CARLTON RESIDENCES®
SUNNY ISLES BEACH

OCEAN VIEW



CITY VIEW

UNIT

A

3 BEDROOMS + DEN + SERVICE
4.5 BATHROOMS

INTERIOR

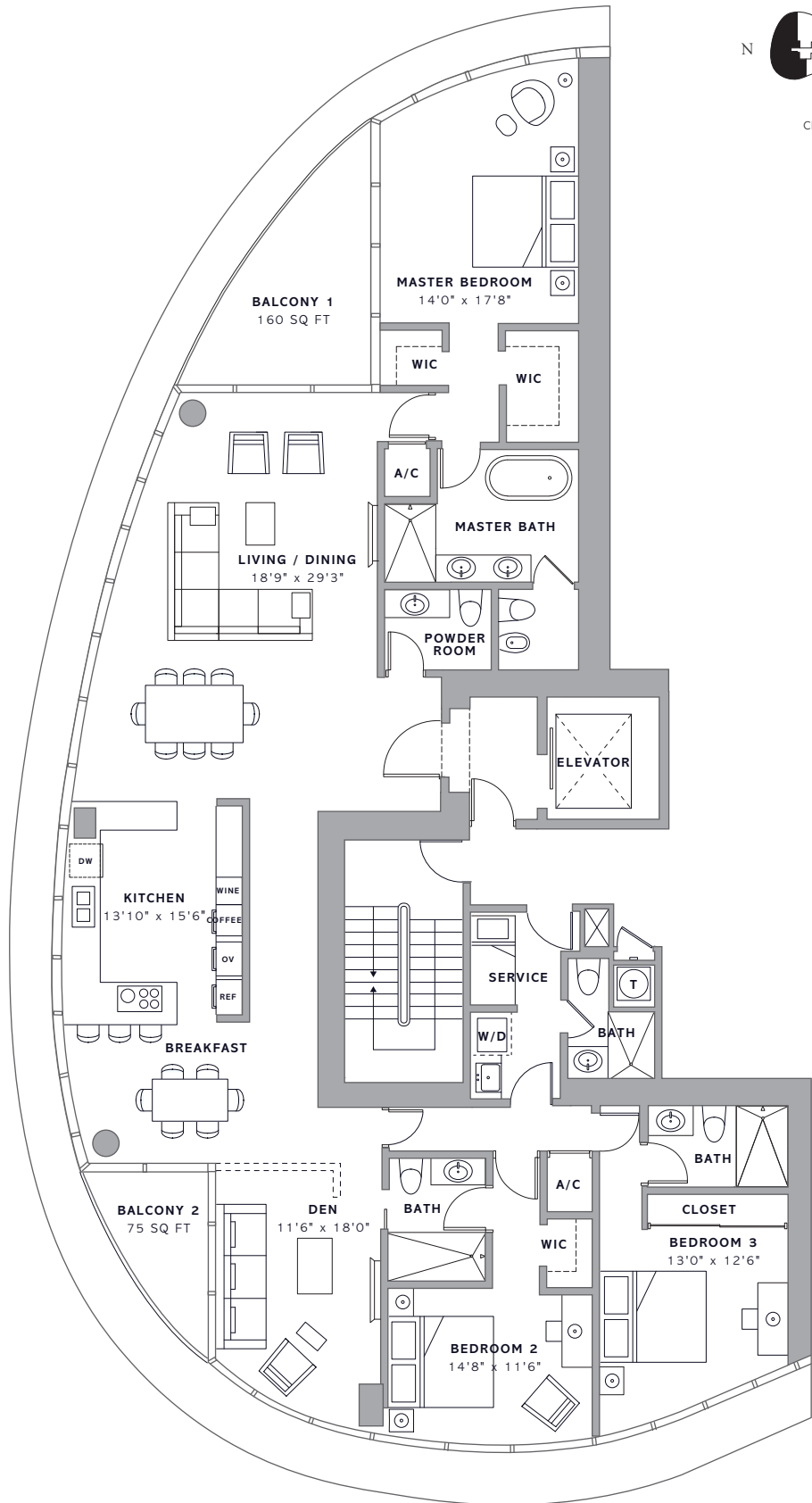
3,080 SQ FT 286.1 SQ M

EXTERIOR

235 SQ FT 21.8 SQ M

TOTAL

3,315 SQ FT 308 SQ M



DEVELOPMENT AND SALES

FORTUNE
INTERNATIONAL
GROUP



CHÂTEAU
GROUP
©1998/03

The Ritz-Carlton Residences, Sunny Isles Beach are not owned, developed or sold by The Ritz-Carlton Hotel Company, L.L.C., or its affiliates ("Ritz-Carlton"). Sunny Isles Property Venture, LLC uses The Ritz-Carlton marks under a license from Ritz-Carlton, which has not confirmed the accuracy of any of the statements or representations made herein.

All room sizes and floorplan measurements are approximate and may vary per unit. Floorplans and unit features are preliminary and proposed only. Developer reserves the right to modify, revise, change or withdraw any or all of same in its sole and absolute discretion and without prior notice. Depictions of furnishings, finishes, appliances, counters, soffits, floor coverings and other matters of detail, including, without limitation, items of finish and decoration are conceptual only and are not necessarily included in each Unit. Consult your Agreement and the Prospectus for items included with your Unit. Oral representations cannot be relied upon as correctly stating representations of the Developer. For correct representations, make reference to the documents that are required by Section 718.503, Florida Statutes, to be furnished by a Developer to a buyer or lessee. This project is being developed by Sunny Isles Property Venture, LLC which has a right to use the trademark names and logos of Fortune International Group and Chateau Group.



THE RITZ-CARLTON RESIDENCES®
SUNNY ISLES BEACH

UNIT

B

3 BEDROOMS + FAMILY
3.5 BATHROOMS

INTERIOR

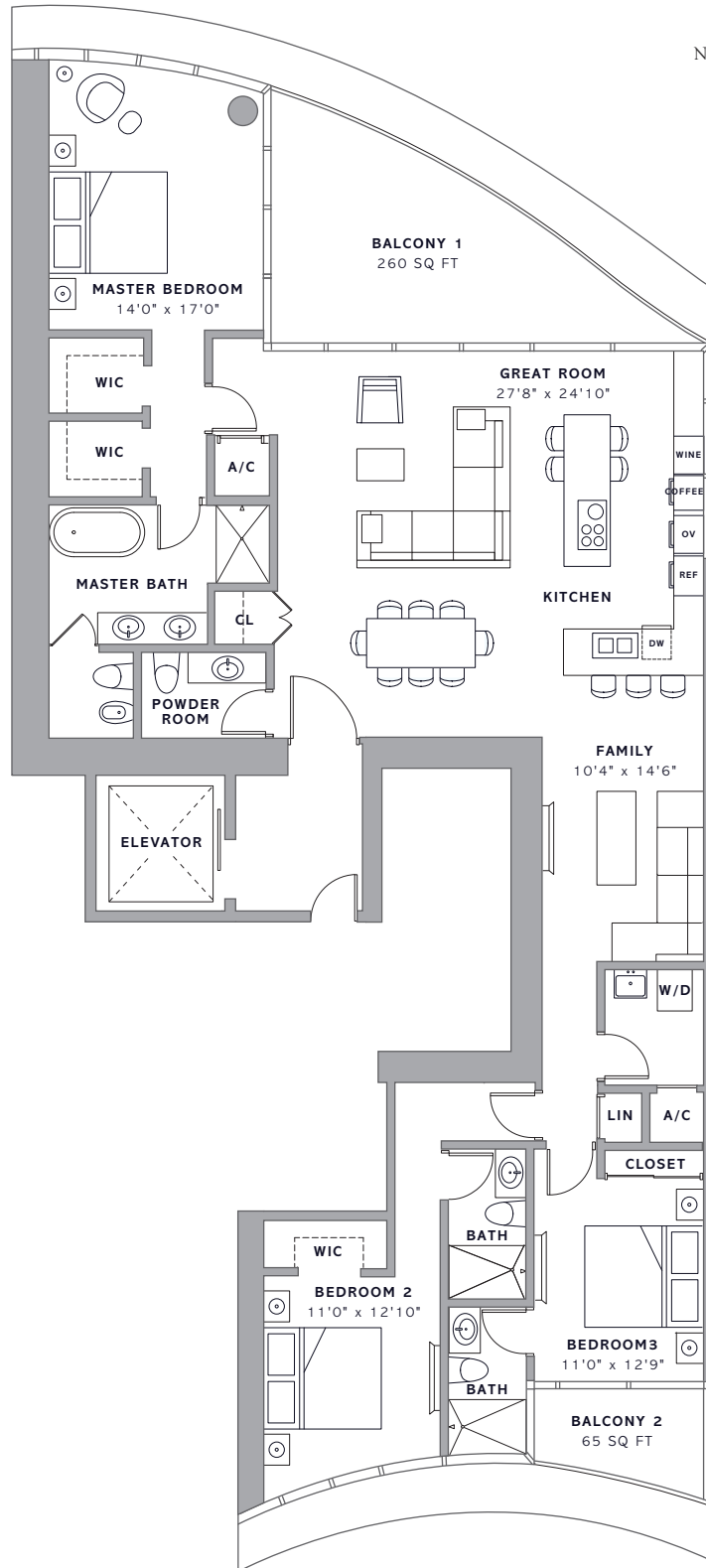
2,475 SQ FT 229.9 SQ M

EXTERIOR

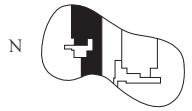
325 SQ FT 30.2 SQ M

TOTAL

2,800 SQ FT 260.1 SQ M



OCEAN VIEW



CITY VIEW

DEVELOPMENT AND SALES

FORTUNE
INTERNATIONAL
GROUP



CHÂTEAU
GROUP

©2005

The Ritz-Carlton Residences, Sunny Isles Beach are not owned, developed or sold by The Ritz-Carlton Hotel Company, L.L.C., or its affiliates ("Ritz-Carlton"). Sunny Isles Property Venture, LLC uses The Ritz-Carlton marks under a license from Ritz-Carlton, which has not confirmed the accuracy of any of the statements or representations made herein.

All room sizes and floorplan measurements are approximate and may vary per unit. Floorplans and unit features are preliminary and proposed only. Developer reserves the right to modify, revise, change or withdraw any or all of same in its sole and absolute discretion and without prior notice. Depictions of furnishings, finishes, appliances, counters, soffits, floor coverings and other matters of detail, including, without limitation, items of finish and decoration are conceptual only and are not necessarily included in each Unit. Consult your Agreement and the Prospectus for items included with your Unit. Oral representations cannot be relied upon as correctly stating representations of the Developer. For correct representations, make reference to the documents that are required by Section 718.503, Florida Statutes, to be furnished by a Developer to a buyer or lessee. This project is being developed by Sunny Isles Property Venture, LLC which has a right to use the trademark names and logos of Fortune International Group and Chateau Group.



THE RITZ-CARLTON RESIDENCES®
SUNNY ISLES BEACH

UNIT

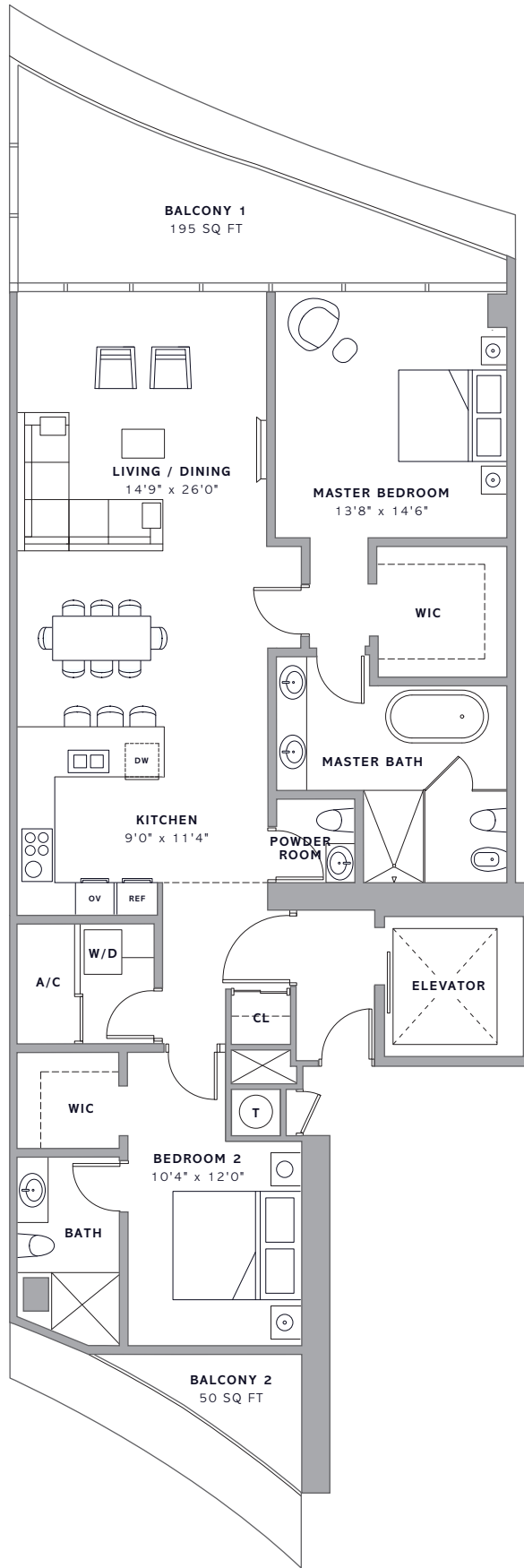
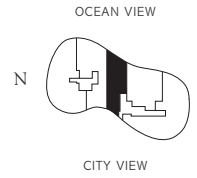
C

2 BEDROOMS
2.5 BATHROOMS

INTERIOR
1,605 SQ FT 149.1 SQ M

EXTERIOR
245 SQ FT 22.8 SQ M

TOTAL
1,850 SQ FT 171.9 SQ M



DEVELOPMENT AND SALES

FORTUNE
INTERNATIONAL
GROUP



CHÂTEAU
GROUP

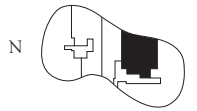
The Ritz-Carlton Residences, Sunny Isles Beach are not owned, developed or sold by The Ritz-Carlton Hotel Company, L.L.C., or its affiliates ("Ritz-Carlton"). Sunny Isles Property Venture, LLC uses The Ritz-Carlton marks under a license from Ritz-Carlton, which has not confirmed the accuracy of any of the statements or representations made herein.

All room sizes and floorplan measurements are approximate and may vary per unit. Floorplans and unit features are preliminary and proposed only. Developer reserves the right to modify, revise, change or withdraw any or all of same in its sole and absolute discretion and without prior notice. Depictions of furnishings, finishes, appliances, counters, soffits, floor coverings and other matters of detail, including, without limitation, items of finish and decoration are conceptual only and are not necessarily included in each Unit. Consult your Agreement and the Prospectus for items included with your Unit. Oral representations cannot be relied upon as correctly stating representations of the Developer. For correct representations, make reference to the documents that are required by Section 718.503, Florida Statutes, to be furnished by a Developer to a buyer or lessee. This project is being developed by Sunny Isles Property Venture, LLC which has a right to use the trademark names and logos of Fortune International Group and Chateau Group.



THE RITZ-CARLTON RESIDENCES®
SUNNY ISLES BEACH

OCEAN VIEW



CITY VIEW

UNIT

D

2 BEDROOMS + DEN
2.5 BATHROOMS

INTERIOR

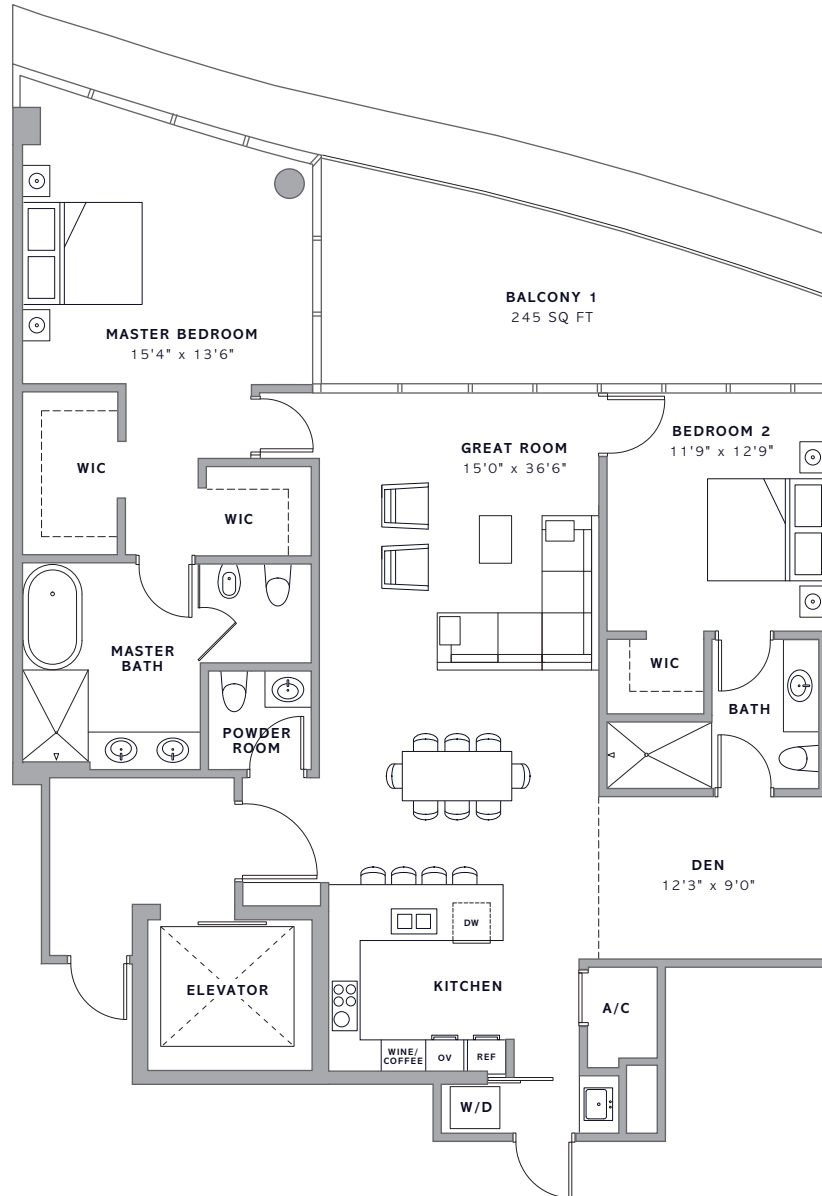
1,735 SQ FT 161.2 SQ M

EXTERIOR

245 SQ FT 22.8 SQ M

TOTAL

1,980 SQ FT 184 SQ M



DEVELOPMENT AND SALES

FORTUNE
INTERNATIONAL
GROUP



CHÂTEAU
GROUP

©1998/03

The Ritz-Carlton Residences, Sunny Isles Beach are not owned, developed or sold by The Ritz-Carlton Hotel Company, L.L.C., or its affiliates ("Ritz-Carlton"). Sunny Isles Property Venture, LLC uses The Ritz-Carlton marks under a license from Ritz-Carlton, which has not confirmed the accuracy of any of the statements or representations made herein.

All room sizes and floorplan measurements are approximate and may vary per unit. Floorplans and unit features are preliminary and proposed only. Developer reserves the right to modify, revise, change or withdraw any or all of same in its sole and absolute discretion and without prior notice. Depictions of furnishings, finishes, appliances, counters, soffits, floor coverings and other matters of detail, including, without limitation, items of finish and decoration are conceptual only and are not necessarily included in each Unit. Consult your Agreement and the Prospectus for items included with your Unit. Oral representations cannot be relied upon as correctly stating representations of the Developer. For correct representations, make reference to the documents that are required by Section 718.503, Florida Statutes, to be furnished by a Developer to a buyer or lessee. This project is being developed by Sunny Isles Property Venture, LLC which has a right to use the trademark names and logos of Fortune International Group and Chateau Group.



THE RITZ-CARLTON RESIDENCES®
SUNNY ISLES BEACH

UNIT

E

4 BEDROOMS + FAMILY + SERVICE
5.5 BATHROOMS

INTERIOR
3,640 SQ FT 338.2 SQ M

EXTERIOR
475 SQ FT 44.1 SQ M

TOTAL
4,115 SQ FT 382.3 SQ M



DEVELOPMENT AND SALES

FORTUNE
INTERNATIONAL
GROUP



CHÂTEAU
GROUP

©1998

The Ritz-Carlton Residences, Sunny Isles Beach are not owned, developed or sold by The Ritz-Carlton Hotel Company, L.L.C., or its affiliates ("Ritz-Carlton"). Sunny Isles Property Venture, LLC uses The Ritz-Carlton marks under a license from Ritz-Carlton, which has not confirmed the accuracy of any of the statements or representations made herein.

All room sizes and floorplan measurements are approximate and may vary per unit. Floorplans and unit features are preliminary and proposed only. Developer reserves the right to modify, revise, change or withdraw any or all of same in its sole and absolute discretion and without prior notice. Depictions of furnishings, finishes, appliances, counters, soffits, floor coverings and other matters of detail, including, without limitation, items of finish and decoration are conceptual only and are not necessarily included in each Unit. Consult your Agreement and the Prospectus for items included with your Unit. Oral representations cannot be relied upon as correctly stating representations of the Developer. For correct representations, make reference to the documents that are required by Section 718.503, Florida Statutes, to be furnished by a Developer to a buyer or lessee. This project is being developed by Sunny Isles Property Venture, LLC which has a right to use the trademark names and logos of Fortune International Group and Chateau Group.



THE RITZ-CARLTON RESIDENCES®
SUNNY ISLES BEACH

Miami Residence Realty

305-751-1000

www.MiamiResidence.com

OCEAN VIEW

N



CITY VIEW



DEVELOPMENT AND SALES

FORTUNE
INTERNATIONAL
GROUP



CHÂTEAU
GROUP

The Ritz-Carlton Residences, Sunny Isles Beach are not owned, developed or sold by The Ritz-Carlton Hotel Company, L.L.C., or its affiliates ("Ritz-Carlton"). Sunny Isles Property Venture, LLC uses The Ritz-Carlton marks under a license from Ritz-Carlton, which has not confirmed the accuracy of any of the statements or representations made herein.

All room sizes and floorplan measurements are approximate and may vary per unit. Floorplans and unit features are preliminary and proposed only. Developer reserves the right to modify, revise, change or withdraw any or all of same in its sole and absolute discretion and without prior notice. Depictions of furnishings, finishes, appliances, counters, soffits, floor coverings and other matters of detail, including, without limitation, items of finish and decoration are conceptual only and are not necessarily included in each Unit. Consult your Agreement and the Prospectus for items included with your Unit. Oral representations cannot be relied upon as correctly stating representations of the Developer. For correct representations, make reference to the documents that are required by Section 718.503, Florida Statutes, to be furnished by a Developer to a buyer or lessee. This project is being developed by Sunny Isles Property Venture, LLC which has a right to use the trademark names and logos of Fortune International Group and Chateau Group.



UNIT A (Line 01)

3 Bed / 4.5 Bath
3,080 SQ FT
286.1 SQ M

UNIT B (Line 02)

3 Bed / 3.5 Bath
2,475 SQ FT
229.9 SQ M

UNIT C (Line 03)

2 Bed / 2.5 Bath
1,605 SQ FT
149.1 SQ M

UNIT D (Line 04)

2 Bed / 2.5 Bath
1,750 SQ FT
162.6 SQ M

UNIT E (Line 05)

4 Bed / 5.5 Bath
3,640 SQ FT
338.2 SQ M



CITY VIEW



OCEAN VIEW