

# ONE THOUSAND MUSEUM

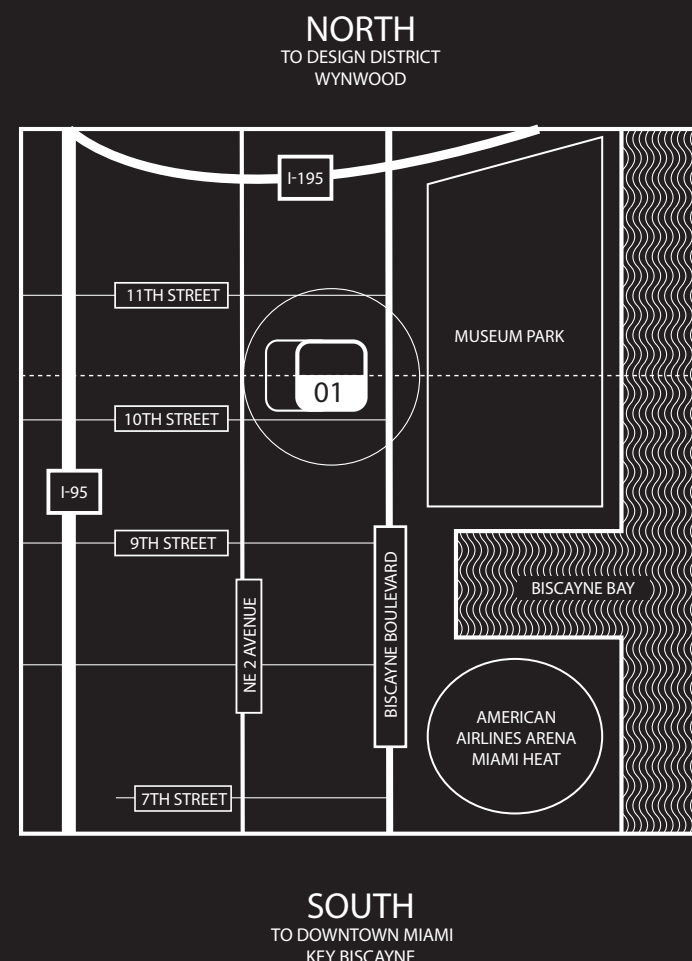
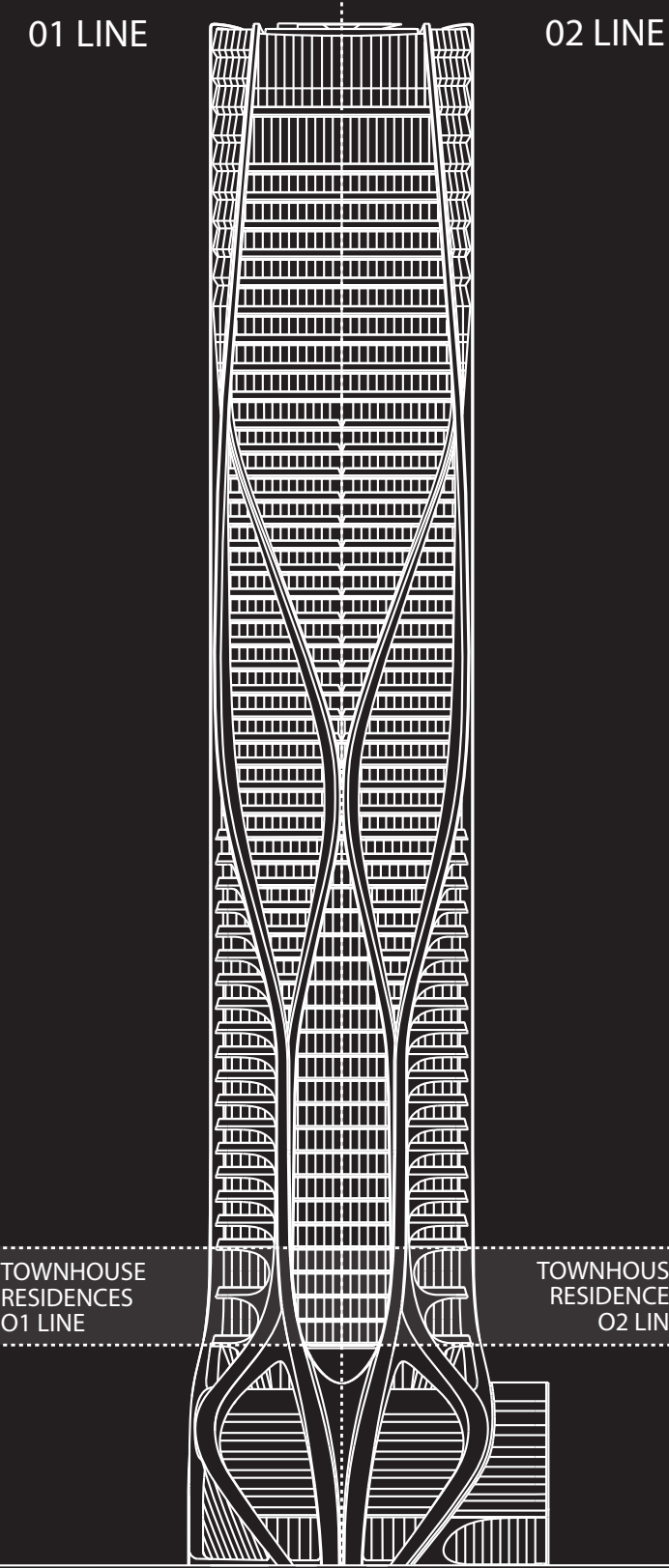
BY ZAHA HADID ARCHITECTS

## TOWNHOUSE RESIDENCE 1201 - LEVELS 12 - 14

5 BEDROOM - 6.5 BATHROOM

INTERIORS: 8,102 SQFT 753 M<sup>2</sup>  
TERRACES: 899 SQFT 84 M<sup>2</sup>

TOTAL AREA: 9,001 SQFT 837 M<sup>2</sup>



### TOWER FEATURES

- ARCHITECTURE AND AMENITY SPACES DESIGNED BY ZAHA HADID ARCHITECTS
- LANDSCAPE ARCHITECTURE BY ENZO ENEA
- MUSEUM-QUALITY INTERIOR AND EXTERIOR ILLUMINATION
- AMENITY SPACE SCENTING CRAFTED BY 12.29 OLFACATORY CONSULTANTS
- FUNCTIONALLY INTEGRATED SECURITY AND TECHNOLOGY PROGRAM

### RESIDENTIAL FEATURES

- ESTATE-SIZE HALF-FLOOR, FULL-FLOOR, AND DUPLEX RESIDENCES
- MULTIPLE OVERSIZED BALCONIES IN EVERY RESIDENCE
- CEILING HEIGHTS FROM 10 TO 20 FEET IN MAIN LIVING AREAS
- FLOOR-TO-CEILING WINDOW WALLS
- CUSTOMIZED ILLUMINATION DESIGNED BY ULI + FRIENDS
- INTEGRATED HOME AUTOMATION BY CRESTRON
- CUSTOM KITCHENS BY GATTO CUCINE WITH GAGGENAU AND SUB-ZERO APPLIANCES

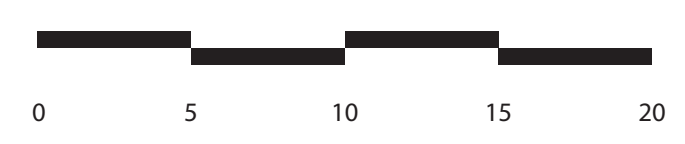
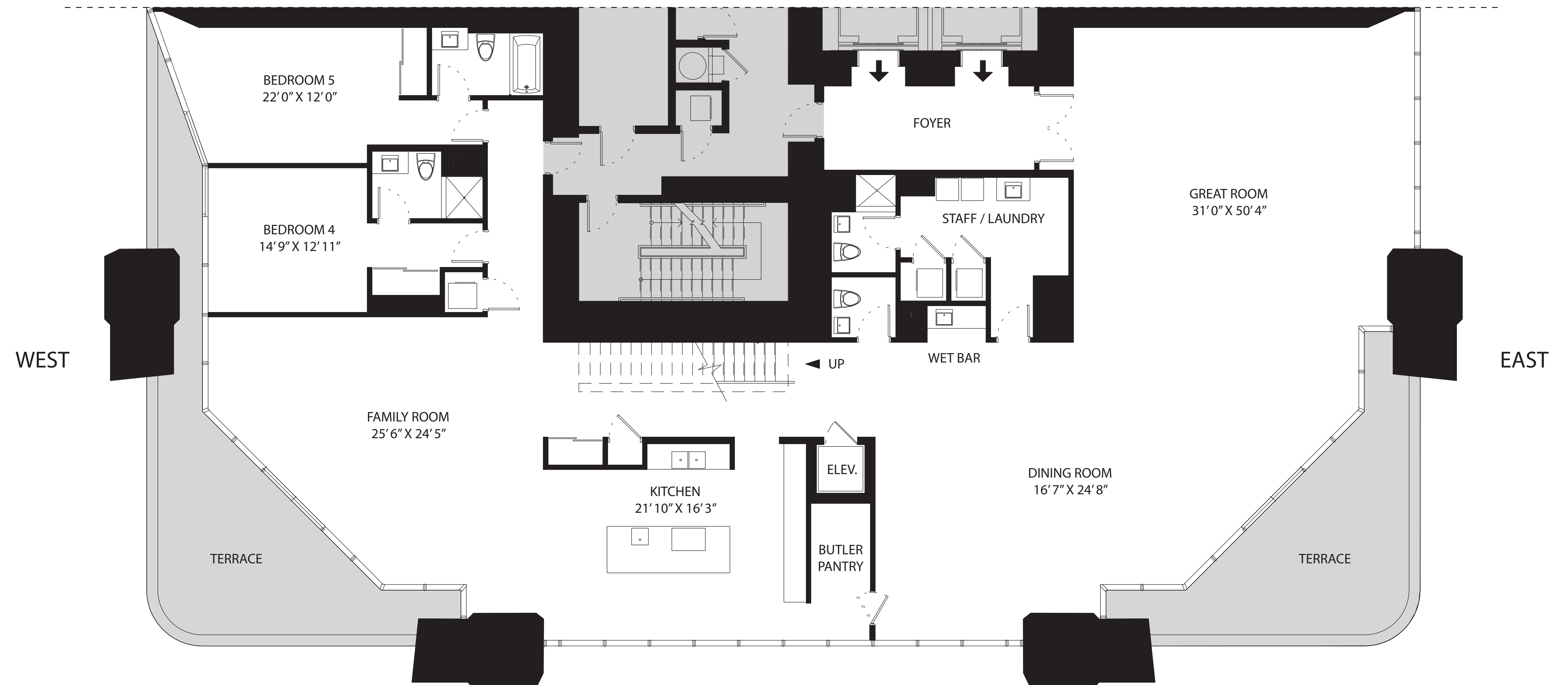
### AMENITIES

- OUTDOOR POOL & RECREATIONAL TERRACE
- FITNESS CENTER
- SPA
- INDOOR AQUATIC CENTER
- SKY LOUNGE
- PRIVATE ROOFTOP HELIPAD
- SECURE ON-SITE PARKING

### SERVICES

- ON-SITE MANAGEMENT PERSONNEL
- CONCIERGE
- ON-SITE SECURITY PERSONNEL
- VALET PARKING

TH UPPER LEVEL  
INTERIOR: 3,523 SQFT 327 M<sup>2</sup>  
TERRACES: 90 SQFT 8 M<sup>2</sup>



SOUTH

1201 LOWER LEVEL  
INTERIOR: 4,579 SQFT 426 M<sup>2</sup>  
TERRACES: 809 SQFT 76 M<sup>2</sup>