



	LEVEL 60 - 61	AQUATIC CENTER & SKY LOUNGE	
		LEVEL 58 - 59	DUPLEX PENTHOUSE
		LEVEL 50 - 57	FULL-FLOOR PENTHOUSES
		LEVEL 34 - 49	HALF-FLOOR RESIDENCES
		LEVEL 26 - 33	HALF-FLOOR RESIDENCES
		LEVEL 15 - 25	HALF-FLOOR RESIDENCES
		LEVEL 10 - 14	TOWNHOUSE RESIDENCES
	LEVEL 8 - 9	INDOOR-OUTDOOR WELLNESS & SPA	
		LEVEL 1 - 7	PODIUM

ZONE 4

ZONE 3

ZONE 2

ZONE 1

ONE THOUSAND MUSEUM

BY ZAHA HADID ARCHITECTS

Miami Residence Realty • 305-751-1000 • www.MiamiResidence.com

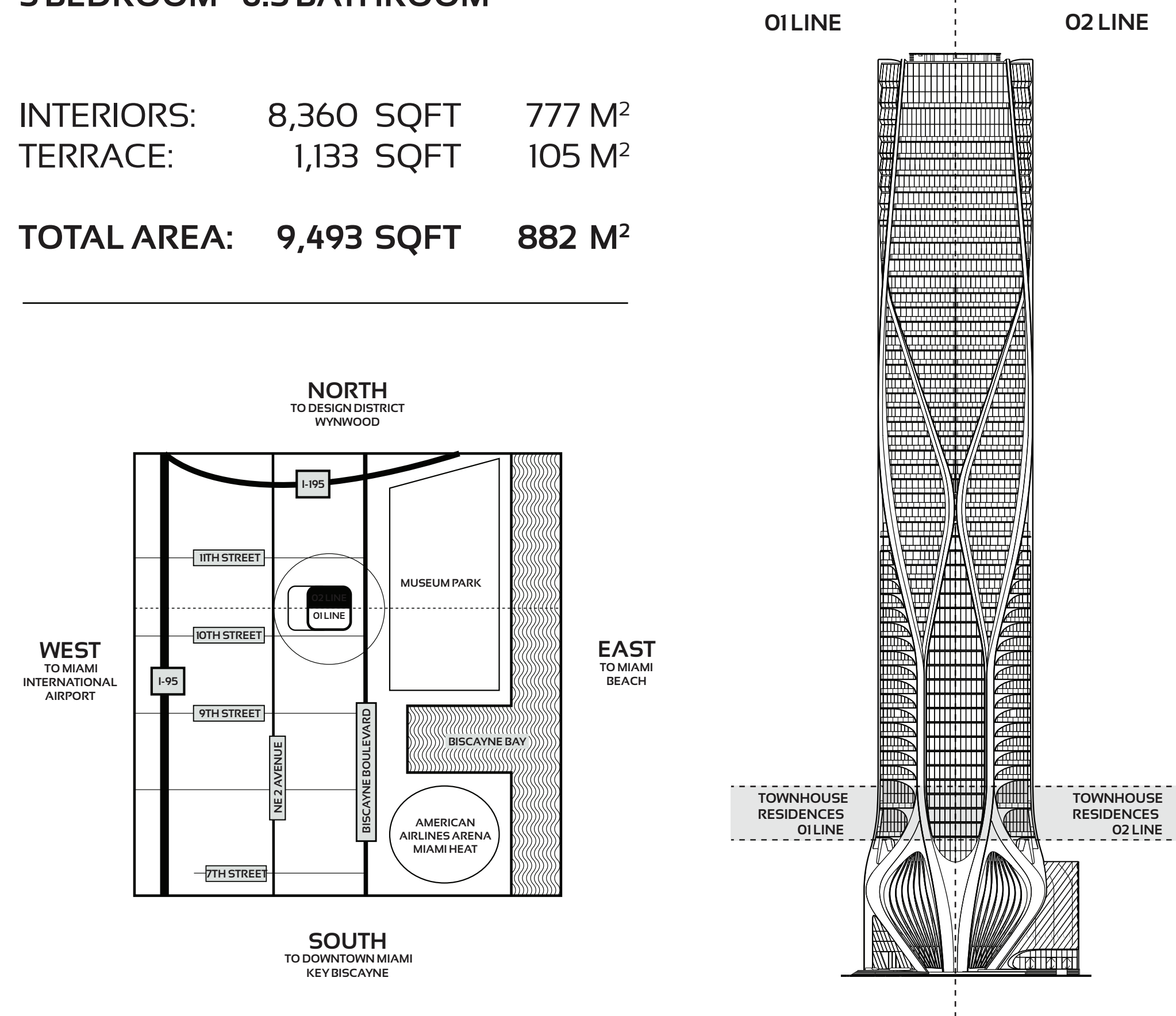
TOWNHOUSE RESIDENCES - LEVELS 10 - 14

5 BEDROOM - 6.5 BATHROOM

INTERIORS: 8,360 SQFT 777 M²

TERRACE: 1,133 SQFT 105 M²

TOTAL AREA: 9,493 SQFT 882 M²



TOWER FEATURES

- ARCHITECTURE AND AMENITY SPACES DESIGNED BY ZAHA HADID ARCHITECTS
- LANDSCAPE ARCHITECTURE BY ENZO ENEA
- MUSEUM-QUALITY INTERIOR AND EXTERIOR ILLUMINATION
- AMENITY SPACE SCENTING CRAFTED BY 1229 OLFACTORY CONSULTANTS
- FUNCTIONALLY INTEGRATED SECURITY AND TECHNOLOGY PROGRAM

RESIDENTIAL FEATURES

- ESTATE-SIZE HALF-FLOOR, FULL-FLOOR, AND DUPLEX RESIDENCES
- MULTIPLE OVERSIZED BALCONIES IN EVERY RESIDENCE
- CEILING HEIGHTS TO 10-20 FEET IN MAIN LIVING AREAS
- FLOOR-TO-CEILING WINDOW WALLS
- CUSTOMIZED ILLUMINATION DESIGNED BY ULI + FRIENDS
- INTEGRATED HOME AUTOMATION BY CRESTRON
- CUSTOM EUROPEAN KITCHENS WITH GAGGENAU AND SUB-ZERO APPLIANCES

AMENITIES

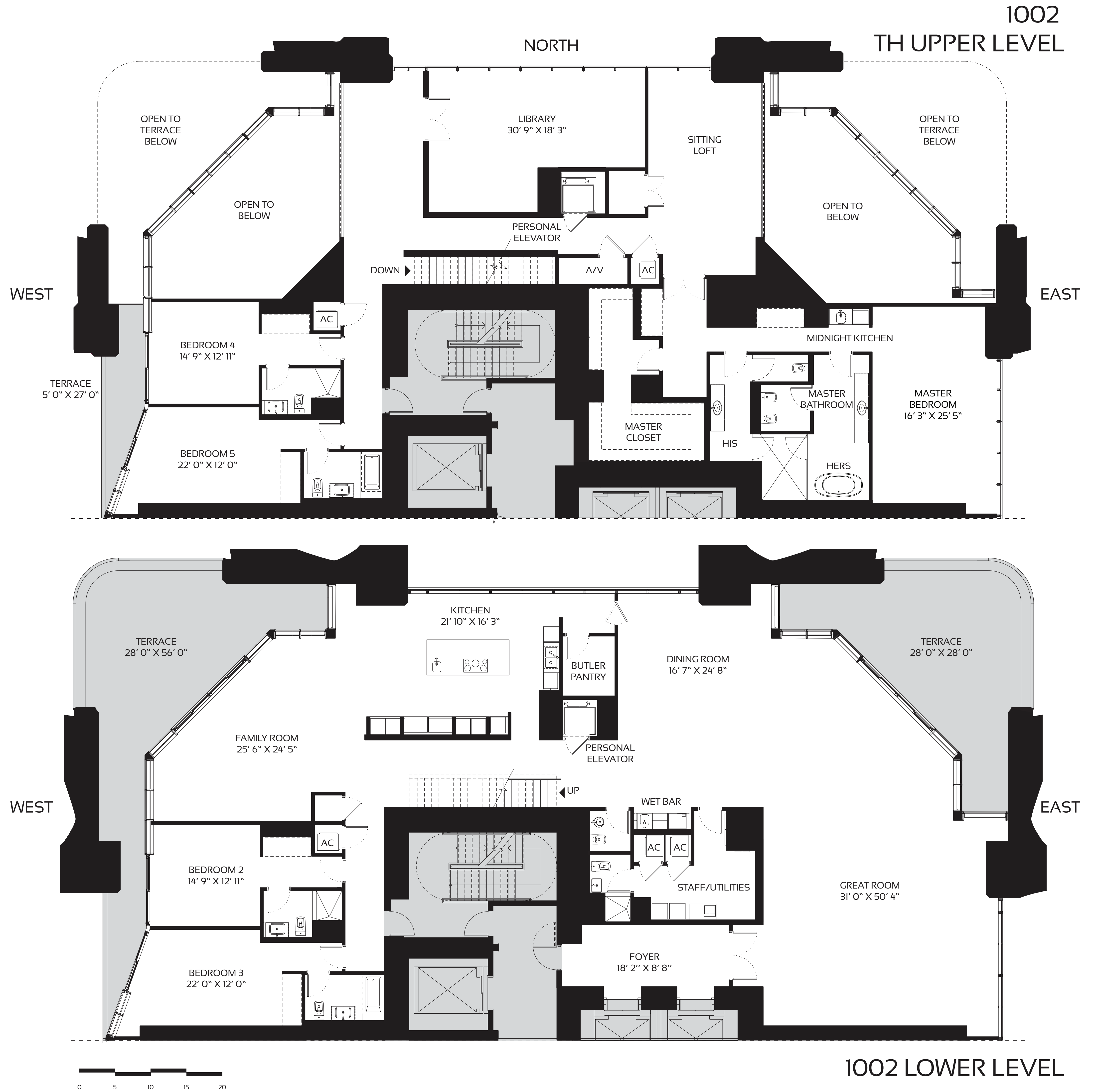
- OUTDOOR POOL & RECREATIONAL TERRACE
- FITNESS CENTER
- SPA
- INDOOR AQUATIC CENTER
- SKY LOUNGE
- PRIVATE ROOFTOP HELIPAD
- SECURE ON-SITE PARKING

SERVICES

- ON-SITE MANAGEMENT PERSONNEL
- CONCIERGE
- ON-SITE SECURITY PERSONNEL
- VALET PARKING

ORAL REPRESENTATIONS CANNOT BE RELIED UPON AS CORRECTLY STATING REPRESENTATIONS OF THE DEVELOPER. FOR CORRECT REPRESENTATIONS, MAKE REFERENCE TO THIS BROCHURE AND TO THE DOCUMENTS REQUIRED BY SECTION 718.503, FLORIDA STATUTES, TO BE FURNISHED BY A DEVELOPER TO A BUYER OR LESSEE.

Use and operation of the helipad are conditioned upon obtaining FAA and other governmental approvals. Approval has not yet been obtained. No assurance can be given about whether the approvals can be obtained, and/or if so, the timing of same. Stated dimensions are measured to the exterior boundaries of the exterior walls and the centerline of interior demising walls and in fact vary from the dimensions that would be determined by using the description and definition of the "Unit" set forth in the Declaration (which generally only includes the interior airspace between the perimeter walls and excludes interior structural components). Additionally, measurements of rooms set forth on any floor plan are generally taken at the greatest points of each given room (as if the room were a perfect rectangle), without regard for any cutouts. Accordingly, the area of the actual room will typically be smaller than the product obtained by multiplying the stated length times width. All dimensions are approximate, and all floor plans and development plans are subject to change. This is not intended to be an offer to sell, or solicitation to buy, condominium units in any other jurisdiction where prohibited by law, and your eligibility for purchase will depend upon your state of residency. This offering is made only by the prospectus for the condominium and no statement should be relied upon if not made in the prospectus. The sketches, renderings, graphic materials, plans, specifications, terms, conditions and statements contained in this brochure are proposed only, and the Developer reserves the right to modify, revise or withdraw any or all of same in its sole discretion and without prior notice. These drawings and depictions are conceptual only and are for the convenience of reference. They should not be relied upon as representations, express or implied, of the final detail of the building, the residences or the amenities. The developer expressly reserves the right to make modifications, revisions, and changes it deems desirable in its sole and absolute discretion. All depictions of furnishings, finishes, appliances, counters, soffits, floor coverings and other matters of detail, including, without limitation, items of finish and decoration, are conceptual only and are not necessarily included in each Unit. Consult your Agreement and the Prospectus for the items included with the Unit. The photographs contained in this brochure may be stock photography or have been taken off-site and are used to depict the spirit of the lifestyles to be achieved rather than any that may exist or that may be proposed, and are merely intended as illustrations of the activities and concepts depicted therein. FOR NY RESIDENTS: THE COMPLETE OFFERING TERMS ARE IN A CPS-12 APPLICATION AVAILABLE FROM THE OFFER OR FILE NO. CP16-0131. The building is currently under construction but not yet completed.



1002 LOWER LEVEL

ONE THOUSAND MUSEUM

BY ZAHA HADID ARCHITECTS

Miami Residence Realty • 305-751-1000 • www.MiamiResidence.com

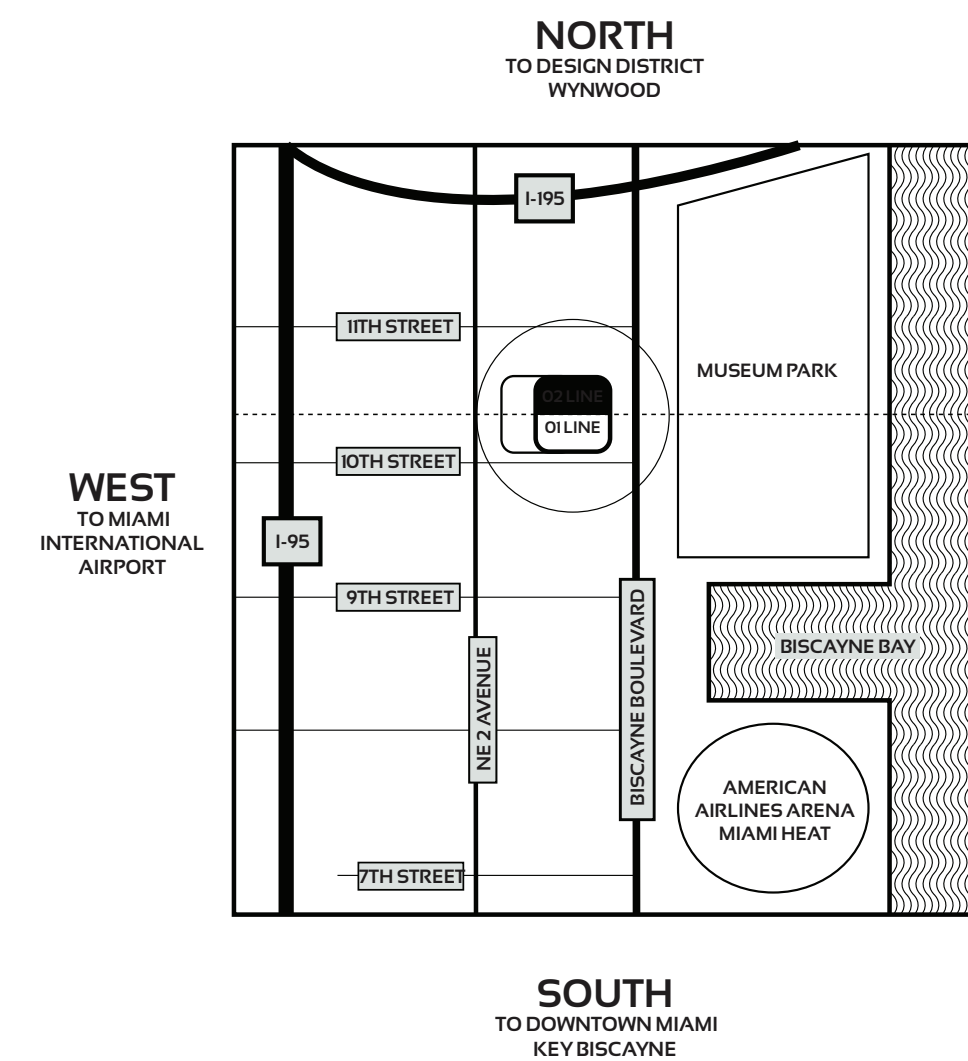
HALF FLOOR RESIDENCES - ZONE 1-LEVELS 15-25

4 BEDROOM - 5.5 BATHROOM

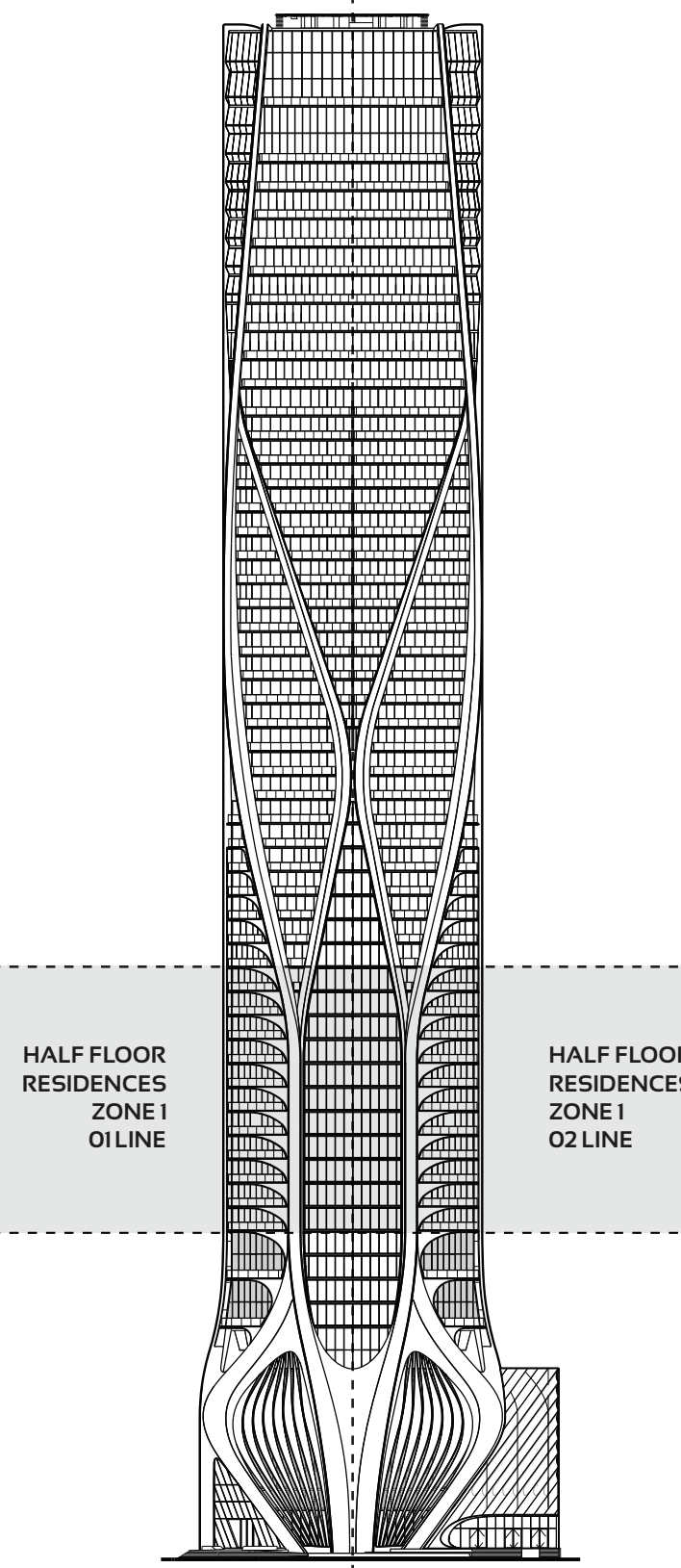
INTERIORS: 4,635 SQFT 431 M²

TERRACE: 872 SQFT 81 M²

TOTAL AREA: 5,507 SQFT 512 M²



O1 LINE O2 LINE



TOWER FEATURES

- ARCHITECTURE AND AMENITY SPACES DESIGNED BY ZAHA HADID ARCHITECTS
- LANDSCAPE ARCHITECTURE BY ENZO ANGELINI
- MUSEUM-QUALITY INTERIOR AND EXTERIOR ILLUMINATION
- AMENITY SPACE SCENTING CRAFTED BY 1229 OLFACTORY CONSULTANTS
- FUNCTIONALLY INTEGRATED SECURITY AND TECHNOLOGY PROGRAM

RESIDENTIAL FEATURES

- ESTATE-SIZE HALF-FLOOR, FULL-FLOOR, AND DUPLEX RESIDENCES
- MULTIPLE OVERSIZED BALCONIES IN EVERY RESIDENCE
- CEILING HEIGHTS TO 10 FEET IN MAIN LIVING AREAS
- FLOOR-TO-CEILING WINDOW WALLS
- CUSTOMIZED ILLUMINATION DESIGNED BY ULI + FRIENDS
- INTEGRATED HOME AUTOMATION BY CRESTRON
- CUSTOM EUROPEAN KITCHENS WITH GAGGENAU AND SUB-ZERO APPLIANCES

AMENITIES

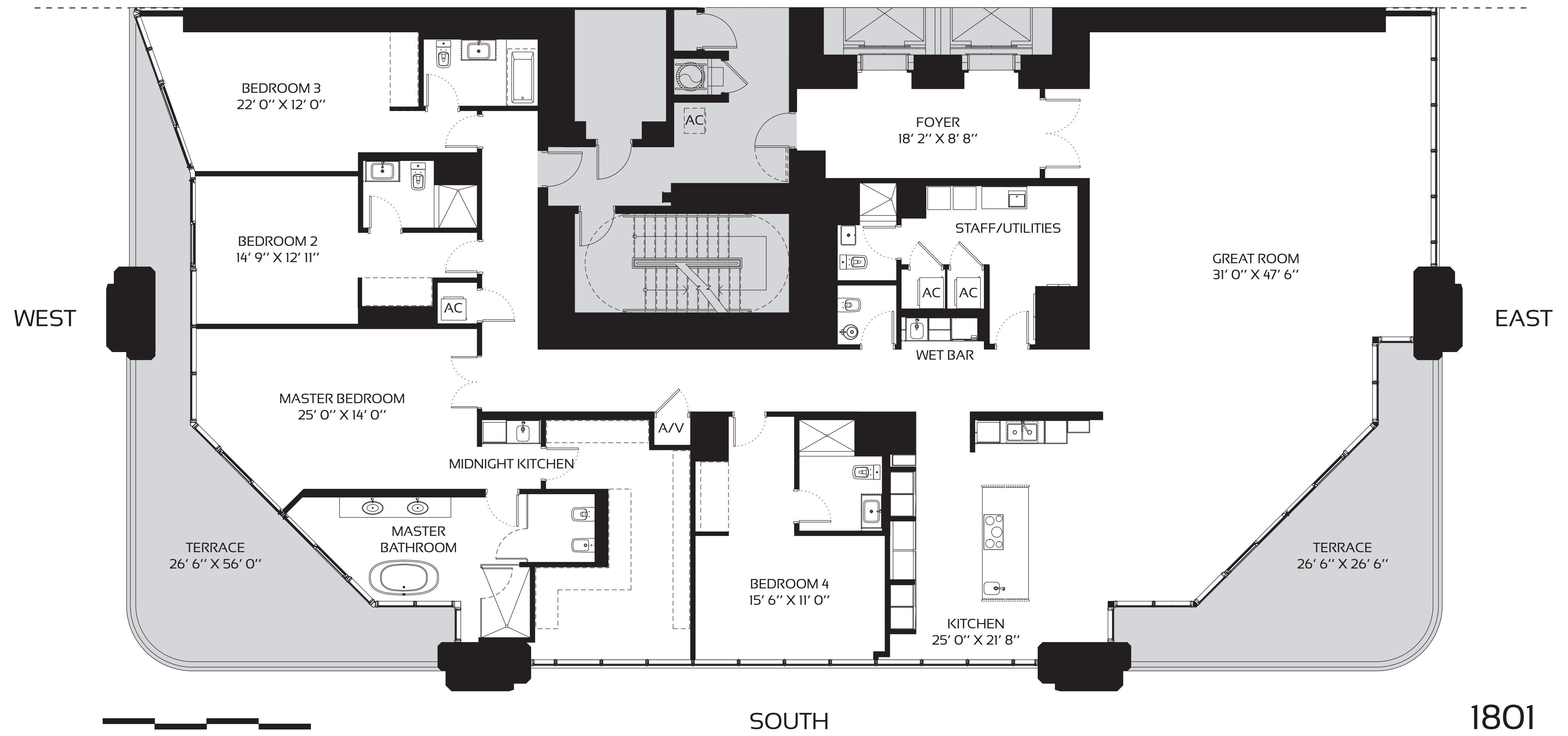
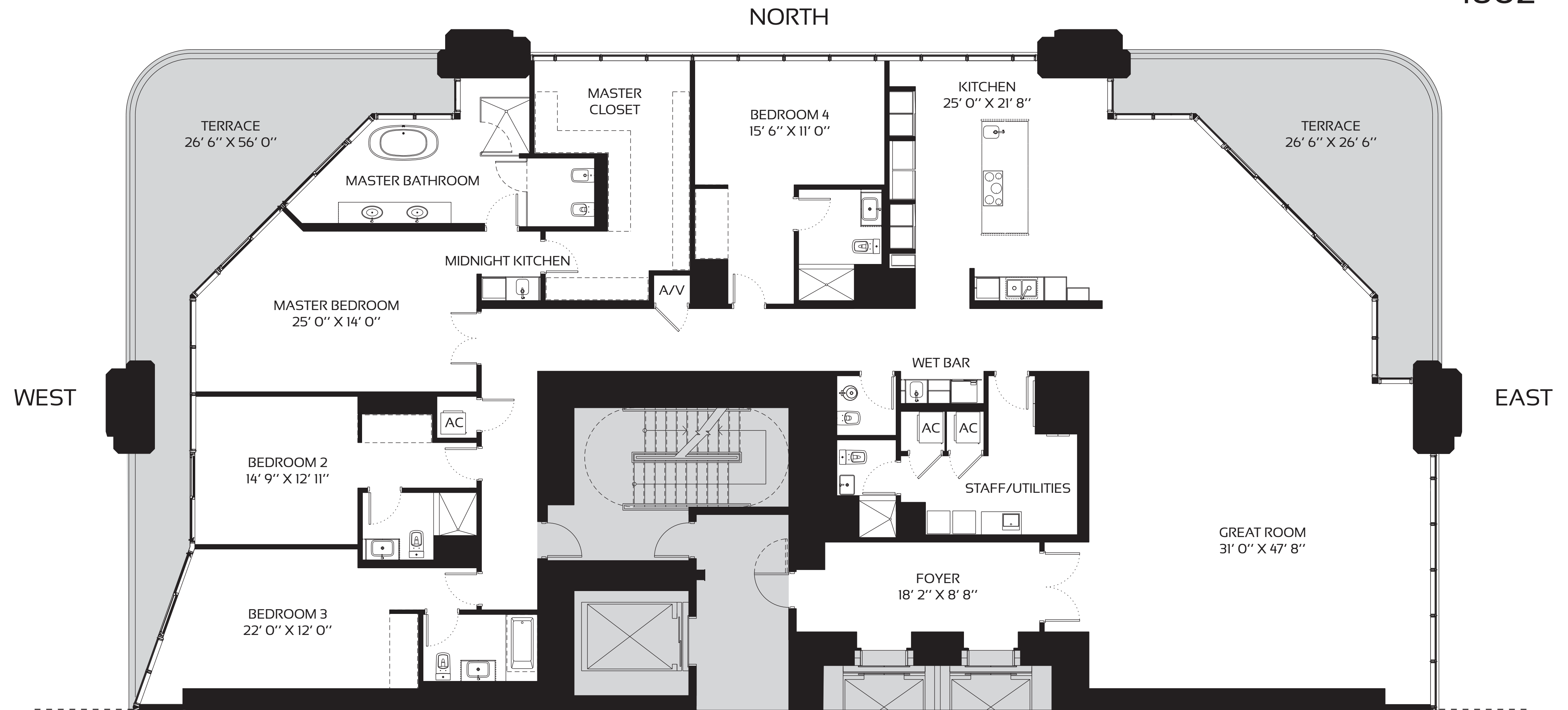
- OUTDOOR POOL & RECREATIONAL TERRACE
- FITNESS CENTER
- SPA
- INDOOR AQUATIC CENTER
- SKY LOUNGE
- PRIVATE ROOFTOP HELIPAD
- SECURE ON-SITE PARKING

SERVICES

- ON-SITE MANAGEMENT PERSONNEL
- CONCIERGE
- ON-SITE SECURITY PERSONNEL
- VALET PARKING

ORAL REPRESENTATIONS CANNOT BE RELIED UPON AS CORRECTLY STATING REPRESENTATIONS OF THE DEVELOPER. FOR CORRECT REPRESENTATIONS, MAKE REFERENCE TO THIS BROCHURE AND TO THE DOCUMENTS REQUIRED BY SECTION 718.503, FLORIDA STATUTES, TO BE FURNISHED BY A DEVELOPER TO A BUYER OR LESSEE.

Use and operation of the helipad are conditioned upon obtaining FAA and other governmental approvals. Approval has not yet been obtained. No assurance can be given about whether the approvals can be obtained, and/or if so, the timing of same. Stated dimensions are measured to the exterior boundaries of the exterior walls and the centerline of interior demising walls and in fact vary from the dimensions that would be determined by using the description and definition of the "Unit" set forth in the Declaration (which generally only includes the interior airspace between the perimeter walls and excludes interior structural components). Additionally, measurements of rooms set forth on any floor plan are generally taken at the greatest points of each given room (as if the room were a perfect rectangle), without regard for any cutouts. Accordingly, the area of the actual room will typically be smaller than the product obtained by multiplying the stated length times width. All dimensions are approximate, and all floor plans and development plans are subject to change. This is not intended to be an offer to sell, or solicitation to buy, condominium units in any other jurisdiction where prohibited by law, and your eligibility for purchase will depend upon your state of residency. This offering is made only by the prospectus for the condominium and no statement should be relied upon if not made in the prospectus. The sketches, renderings, graphic materials, plans, specifications, terms, conditions and statements contained in this brochure are proposed only, and the Developer reserves the right to modify, revise or withdraw any or all of same in its sole discretion and without prior notice. These drawings and depictions are conceptual only and are for the convenience of reference. They should not be relied upon as representations, express or implied, of the final detail of the building, the residences or the amenities. The developer expressly reserves the right to make modifications, revisions, and changes it deems desirable in its sole and absolute discretion. All depictions of furnishings, finishes, appliances, counters, soffits, floor coverings and other matters of detail, including, without limitation, items of finish and decoration, are conceptual only and are not necessarily included in each Unit. Consult your Agreement and the Prospectus for the items included with the Unit. The photographs contained in this brochure may be stock photography or have been taken off-site and are used to depict the spirit of the lifestyles to be achieved rather than any that may exist or that may be proposed, and are merely intended as illustrations of the activities and concepts depicted therein. FOR NY RESIDENTS: THE COMPLETE OFFERING TERMS ARE IN A CPS-12 APPLICATION AVAILABLE FROM THE OFFER OR FILE NO. CP16-0131. The building is currently under construction but not yet completed.



ONE THOUSAND MUSEUM

BY ZAHA HADID ARCHITECTS

Miami Residence Realty • 305-751-1000 • www.MiamiResidence.com

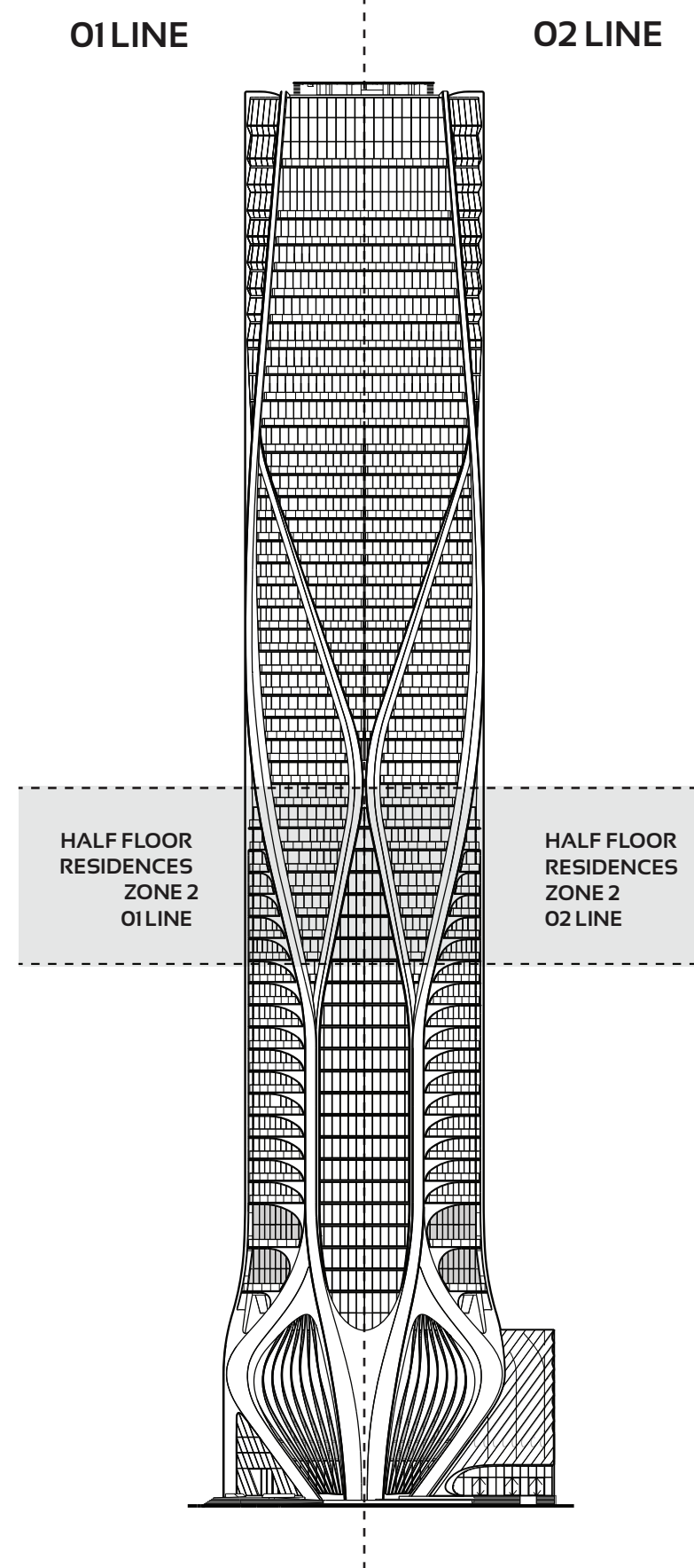
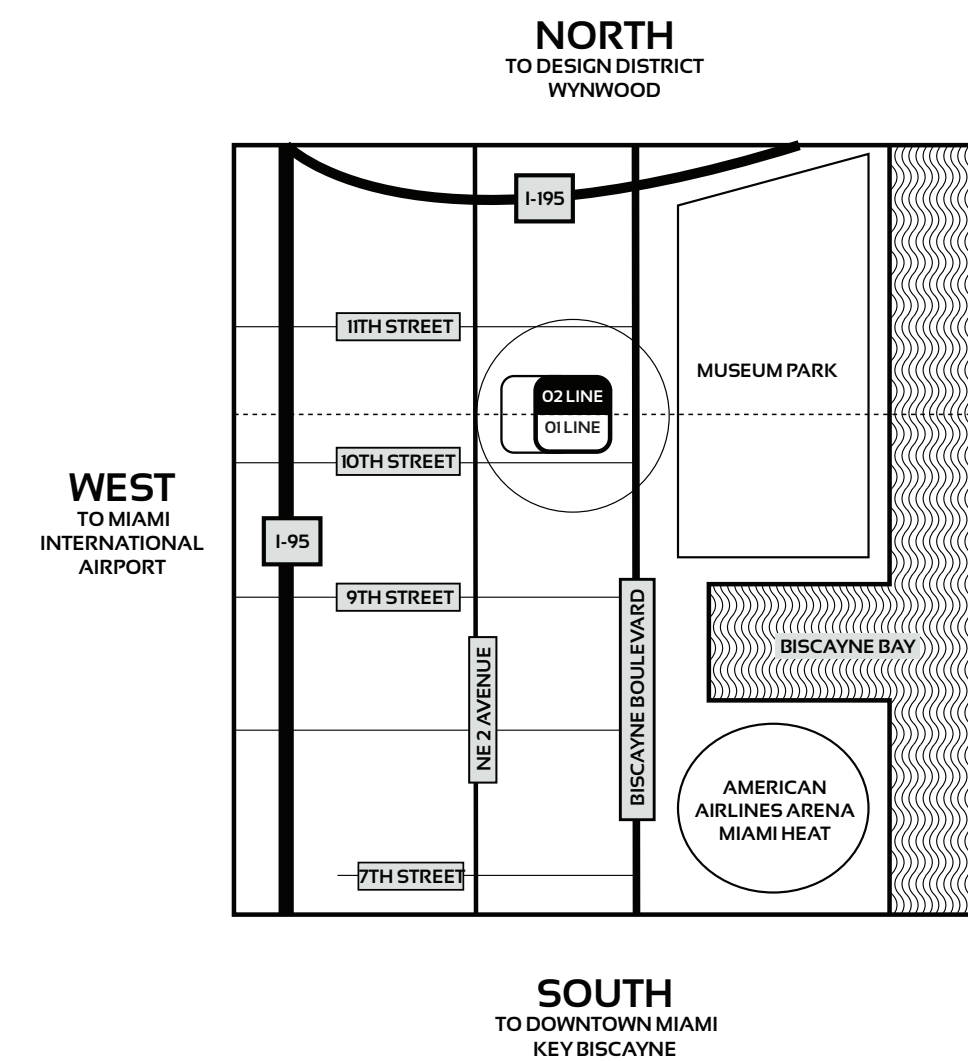
HALF FLOOR RESIDENCES - ZONE 2 - LEVELS 26 - 33

4 BEDROOM - 5.5 BATHROOM

INTERIORS: 4,727 SQFT 439.1 M²

TERRACE: 780 SQFT 72.5 M²

TOTAL AREA: 5,507 SQFT 511.6 M²



TOWER FEATURES

- ARCHITECTURE AND AMENITY SPACES DESIGNED BY ZAHA HADID ARCHITECTS
- LANDSCAPE ARCHITECTURE BY ENZO ANGELINI
- MUSEUM-QUALITY INTERIOR AND EXTERIOR ILLUMINATION
- AMENITY SPACE SCENTING CRAFTED BY 1229 OLFACTORY CONSULTANTS
- FUNCTIONALLY INTEGRATED SECURITY AND TECHNOLOGY PROGRAM

RESIDENTIAL FEATURES

- ESTATE-SIZE HALF-FLOOR, FULL-FLOOR, AND DUPLEX RESIDENCES
- MULTIPLE OVERSIZED BALCONIES IN EVERY RESIDENCE
- CEILING HEIGHTS TO 10 FEET IN MAIN LIVING AREAS
- FLOOR-TO-CEILING WINDOW WALLS
- CUSTOMIZED ILLUMINATION DESIGNED BY ULI + FRIENDS
- INTEGRATED HOME AUTOMATION BY CRESTRON
- CUSTOM EUROPEAN KITCHENS WITH GAGGENAU AND SUB-ZERO APPLIANCES

AMENITIES

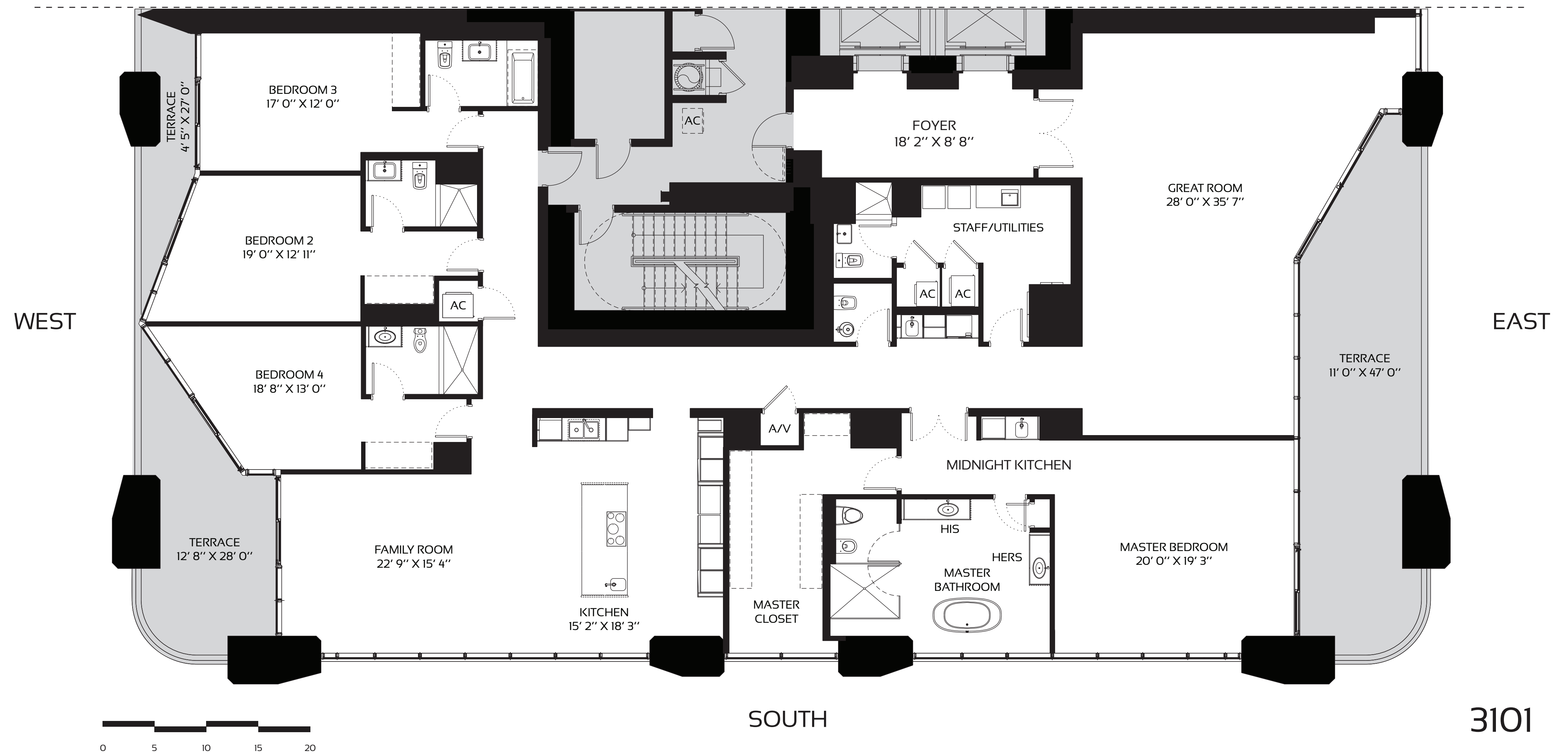
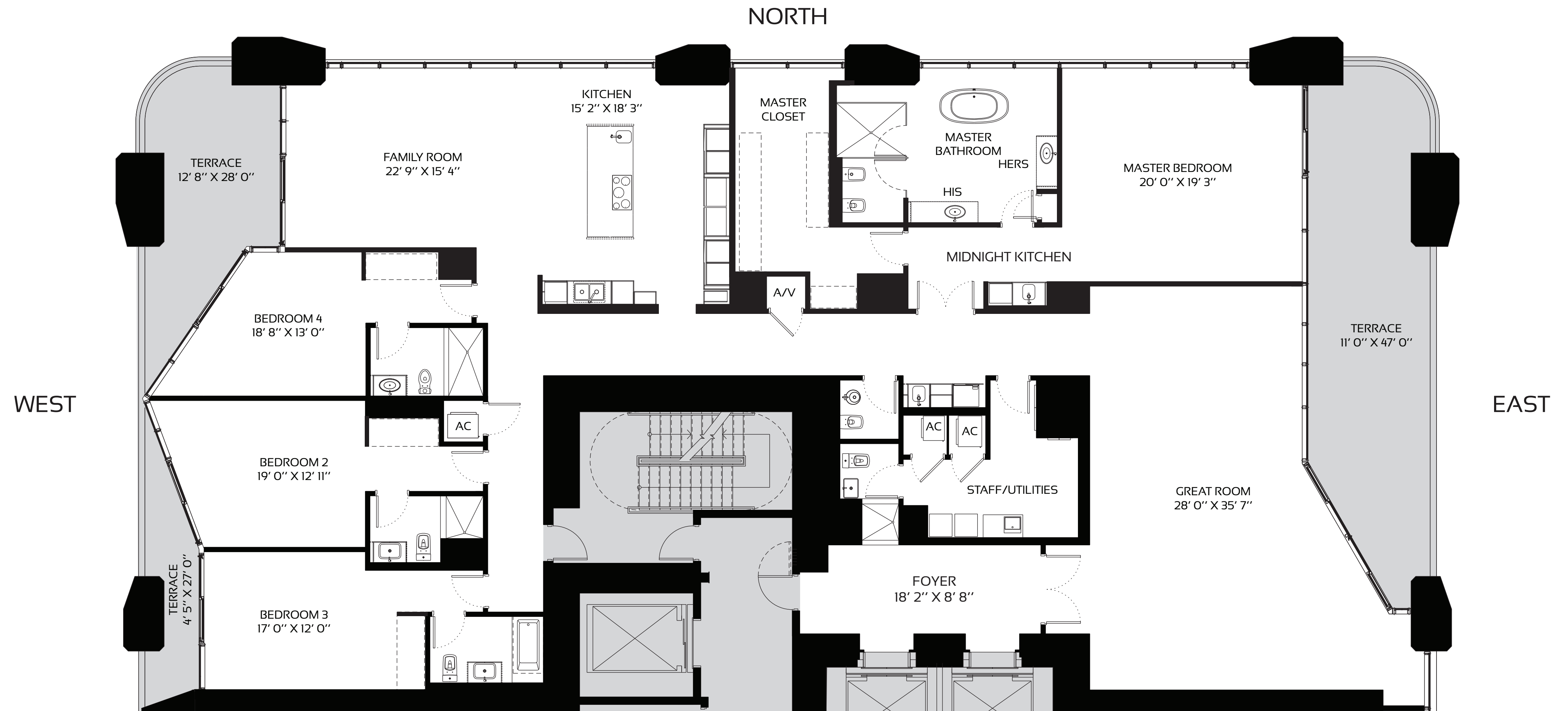
- OUTDOOR POOL & RECREATIONAL TERRACE
- FITNESS CENTER
- SPA
- INDOOR AQUATIC CENTER
- SKY LOUNGE
- PRIVATE ROOFTOP HELIPAD
- SECURE ON-SITE PARKING

SERVICES

- ON-SITE MANAGEMENT PERSONNEL
- CONCIERGE
- ON-SITE SECURITY PERSONNEL
- VALET PARKING

ORAL REPRESENTATIONS CANNOT BE RELIED UPON AS CORRECTLY STATING REPRESENTATIONS OF THE DEVELOPER. FOR CORRECT REPRESENTATIONS, MAKE REFERENCE TO THIS BROCHURE AND TO THE DOCUMENTS REQUIRED BY SECTION 718.503, FLORIDA STATUTES, TO BE FURNISHED BY A DEVELOPER TO A BUYER OR LESSEE.

Use and operation of the helipad are conditioned upon obtaining FAA and other governmental approvals. Approval has not yet been obtained. No assurance can be given about whether the approvals can be obtained, and/or if so, the timing of same. Stated dimensions are measured to the exterior boundaries of the exterior walls and the centerline of interior demising walls and in fact vary from the dimensions that would be determined by using the description and definition of the "Unit" set forth in the Declaration (which generally only includes the interior airspace between the perimeter walls and excludes interior structural components). Additionally, measurements of rooms set forth on any floor plan are generally taken at the greatest points of each given room (as if the room were a perfect rectangle), without regard for any cutouts. Accordingly, the area of the actual room will typically be smaller than the product obtained by multiplying the stated length times width. All dimensions are approximate, and all floor plans and development plans are subject to change. This is not intended to be an offer to sell, or solicitation to buy, condominium units in any other jurisdiction where prohibited by law, and your eligibility for purchase will depend upon your state of residency. This offering is made only by the prospectus for the condominium and no statement should be relied upon if not made in the prospectus. The sketches, renderings, graphic materials, plans, specifications, terms, conditions and statements contained in this brochure are proposed only, and the Developer reserves the right to modify, revise or withdraw any or all of same in its sole discretion and without prior notice. These drawings and depictions are conceptual only and are for the convenience of reference. They should not be relied upon as representations, express or implied, of the final detail of the building, the residences or the amenities. The developer expressly reserves the right to make modifications, revisions, and changes it deems desirable in its sole and absolute discretion. All depictions of furnishings, finishes, appliances, counters, soffits, floor coverings and other matters of detail, including, without limitation, items of finish and decoration, are conceptual only and are not necessarily included in each Unit. Consult your Agreement and the Prospectus for the items included with the Unit. The photographs contained in this brochure may be stock photography or have been taken off-site and are used to depict the spirit of the lifestyles to be achieved rather than any that may exist or that may be proposed, and are merely intended as illustrations of the activities and concepts depicted therein. FOR NY RESIDENTS: THE COMPLETE OFFERING TERMS ARE IN A CPS-12 APPLICATION AVAILABLE FROM THE OFFEROR FILE NO. CP16-0131. The building is currently under construction but not yet completed.



ONE THOUSAND MUSEUM

BY ZAHA HADID ARCHITECTS

Miami Residence Realty • 305-751-1000 • www.MiamiResidence.com

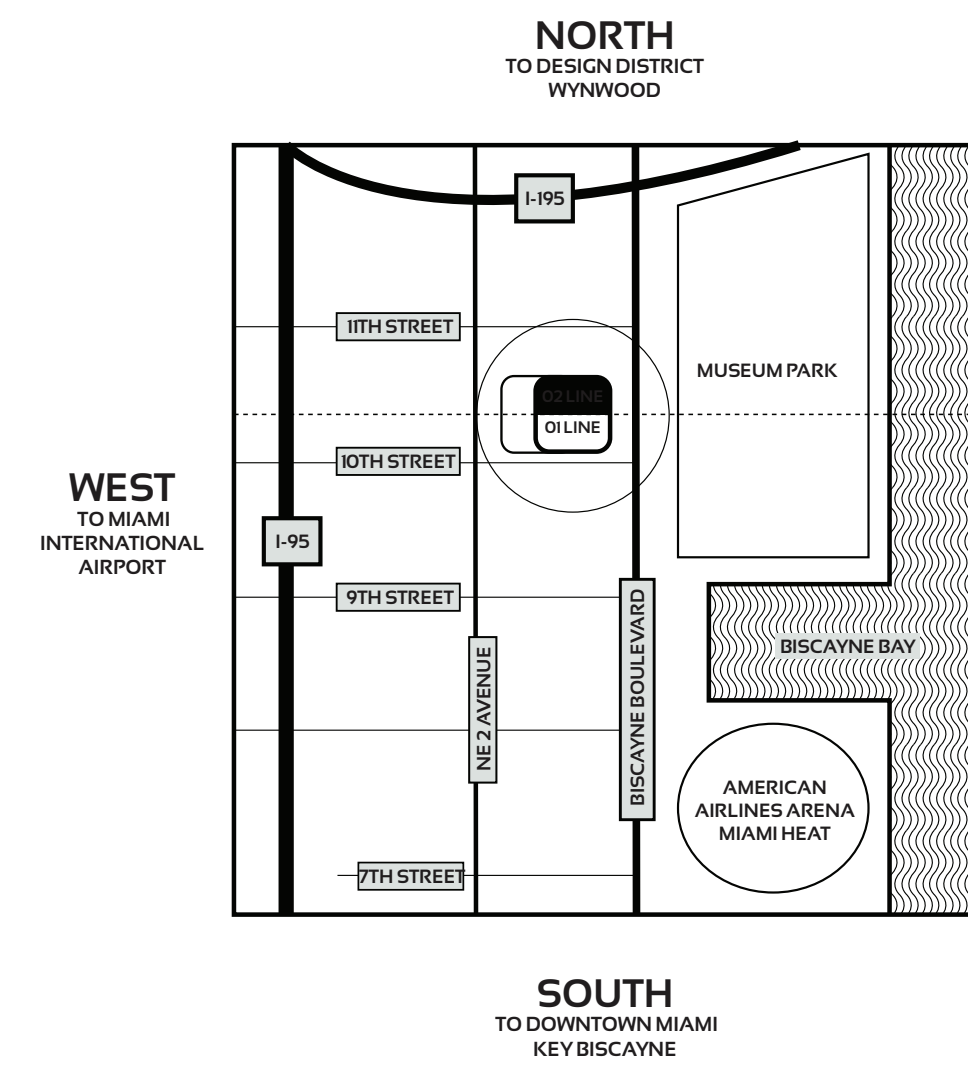
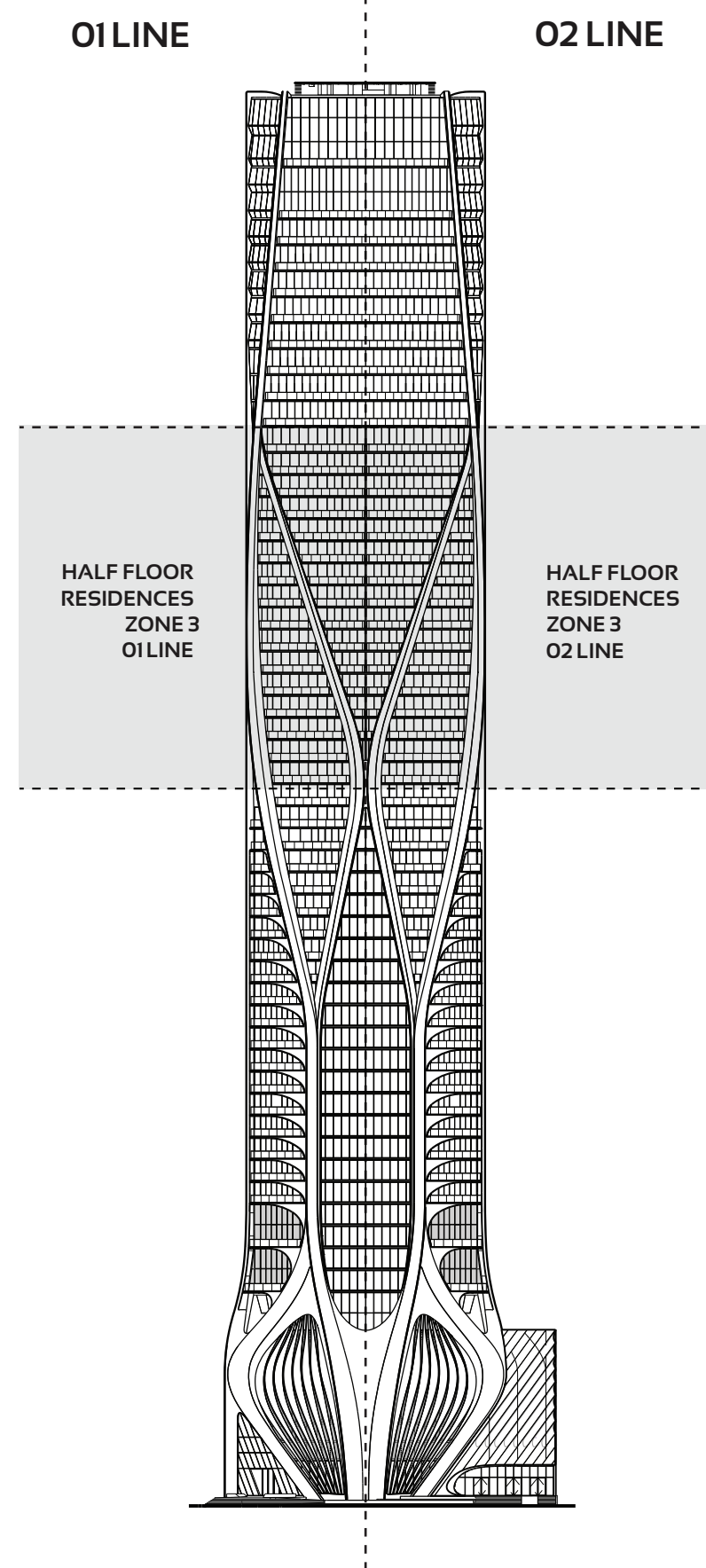
HALF FLOOR RESIDENCES - ZONE 3 - TYPE A - LEVELS 34 - 49

4 BEDROOM - 5.5 BATHROOM

INTERIORS: 4,876 SQFT 453 M²

TERRACE: 700 SQFT 65 M²

TOTAL AREA: 5,576 SQFT 518 M²



TOWER FEATURES

- ARCHITECTURE AND AMENITY SPACES DESIGNED BY ZAHA HADID ARCHITECTS
- LANDSCAPE ARCHITECTURE BY ENZO ENEA
- MUSEUM-QUALITY INTERIOR AND EXTERIOR ILLUMINATION
- AMENITY SPACE SCENTING CRAFTED BY 1229 OLFACTORY CONSULTANTS
- FUNCTIONALLY INTEGRATED SECURITY AND TECHNOLOGY PROGRAM

RESIDENTIAL FEATURES

- ESTATE-SIZE HALF-FLOOR, FULL-FLOOR, AND DUPLEX RESIDENCES
- MULTIPLE OVERSIZED BALCONIES IN EVERY RESIDENCE
- CEILING HEIGHTS TO 10 FEET IN MAIN LIVING AREAS
- FLOOR-TO-CEILING WINDOW WALLS
- CUSTOMIZED ILLUMINATION DESIGNED BY ULI + FRIENDS
- INTEGRATED HOME AUTOMATION BY CRESTRON
- CUSTOM EUROPEAN KITCHENS WITH GAGGENAU AND SUB-ZERO APPLIANCES

AMENITIES

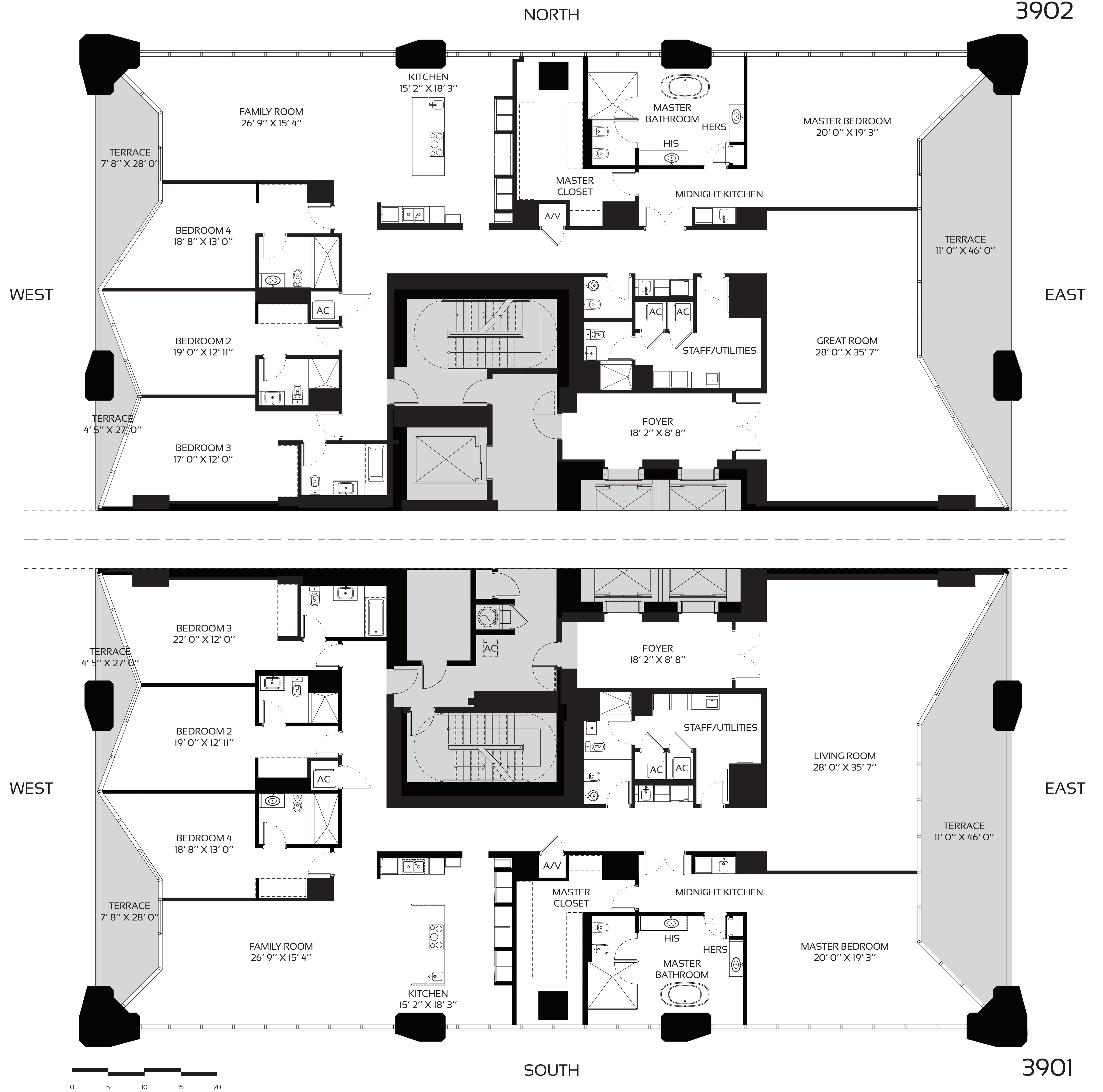
- OUTDOOR POOL & RECREATIONAL TERRACE
- FITNESS CENTER
- SPA
- INDOOR AQUATIC CENTER
- SKY LOUNGE
- PRIVATE ROOFTOP HELIPAD
- SECURE ON-SITE PARKING

SERVICES

- ON-SITE MANAGEMENT PERSONNEL
- CONCIERGE
- ON-SITE SECURITY PERSONNEL
- VALET PARKING

ORAL REPRESENTATIONS CANNOT BE RELIED UPON AS CORRECTLY STATING REPRESENTATIONS OF THE DEVELOPER. FOR CORRECT REPRESENTATIONS, MAKE REFERENCE TO THIS BROCHURE AND TO THE DOCUMENTS REQUIRED BY SECTION 718.503, FLORIDA STATUTES, TO BE FURNISHED BY A DEVELOPER TO A BUYER OR LESSEE.

Use and operation of the helipad are conditioned upon obtaining FAA and other governmental approvals. Approval has not yet been obtained. No assurance can be given about whether the approvals can be obtained, and/or if so, the timing of same. Stated dimensions are measured to the exterior boundaries of the exterior walls and the centerline of interior demising walls and in fact vary from the dimensions that would be determined by using the description and definition of the "Unit" set forth in the Declaration (which generally only includes the interior airspace between the perimeter walls and excludes interior structural components). Additionally, measurements of rooms set forth on any floor plan are generally taken at the greatest points of each given room (as if the room were a perfect rectangle), without regard for any cutouts. Accordingly, the area of the actual room will typically be smaller than the product obtained by multiplying the stated length times width. All dimensions are approximate, and all floor plans and development plans are subject to change. This is not intended to be an offer to sell, or solicitation to buy, condominium units in any other jurisdiction where prohibited by law, and your eligibility for purchase will depend upon your state of residency. This offering is made only for the prospectus for the condominium and no statement should be relied upon if not made in the prospectus. The sketches, renderings, graphic materials, plans, specifications, terms, conditions and statements contained in this brochure are proposed only, and the Developer reserves the right to modify, revise or withdraw any or all of same in its sole discretion and without prior notice. These drawings and depictions are conceptual only and are for the convenience of reference. They should not be relied upon as representations, express or implied, of the final detail of the building, the residences or the amenities. The developer expressly reserves the right to make modifications, revisions, and changes it deems desirable in its sole and absolute discretion. All depictions of furnishings, finishes, appliances, counters, soffits, floor coverings and other matters of detail, including, without limitation, items of finish and decoration, are conceptual only and are not necessarily included in each Unit. Consult your Agreement and the Prospectus for the items included with the Unit. The photographs contained in this brochure may be stock photography or have been taken off-site and are used to depict the spirit of the lifestyles to be achieved rather than any that may exist or that may be proposed, and are merely intended as illustrations of the activities and concepts depicted therein. FOR NY RESIDENTS: THE COMPLETE OFFERING TERMS ARE IN A CPS-12 APPLICATION AVAILABLE FROM THE OFFER OR FILE NO. CP16-0131. The building is currently under construction but not yet completed.



ONE THOUSAND MUSEUM

BY ZAHA HADID ARCHITECTS

Miami Residence Realty • 305-751-1000 • www.MiamiResidence.com

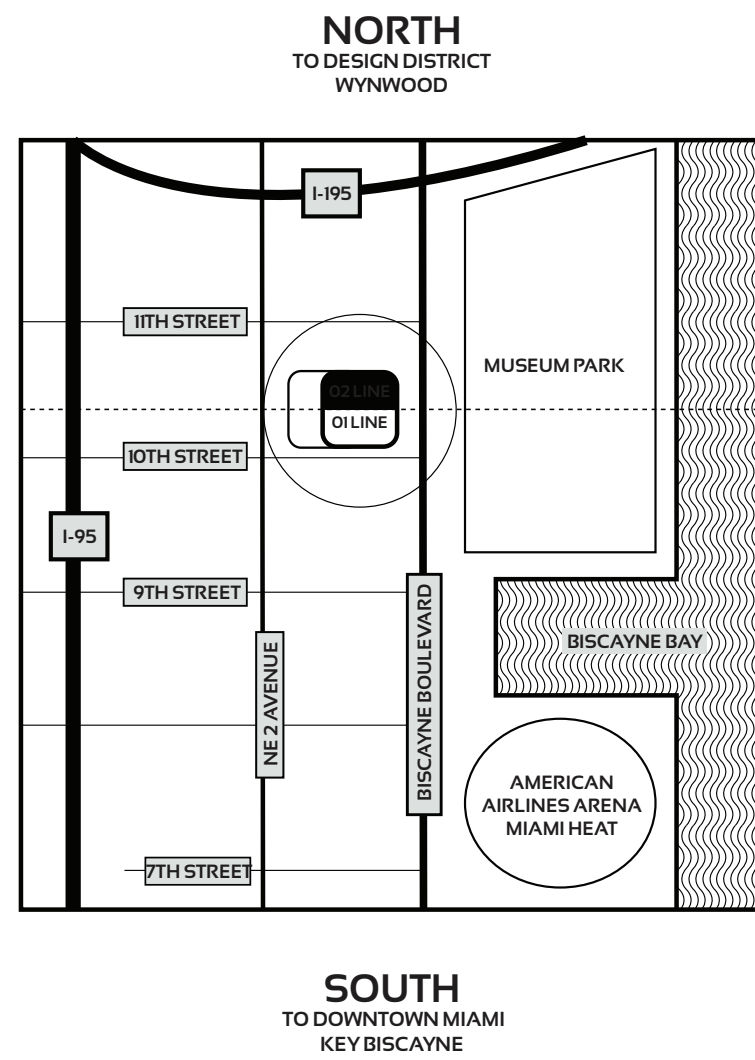
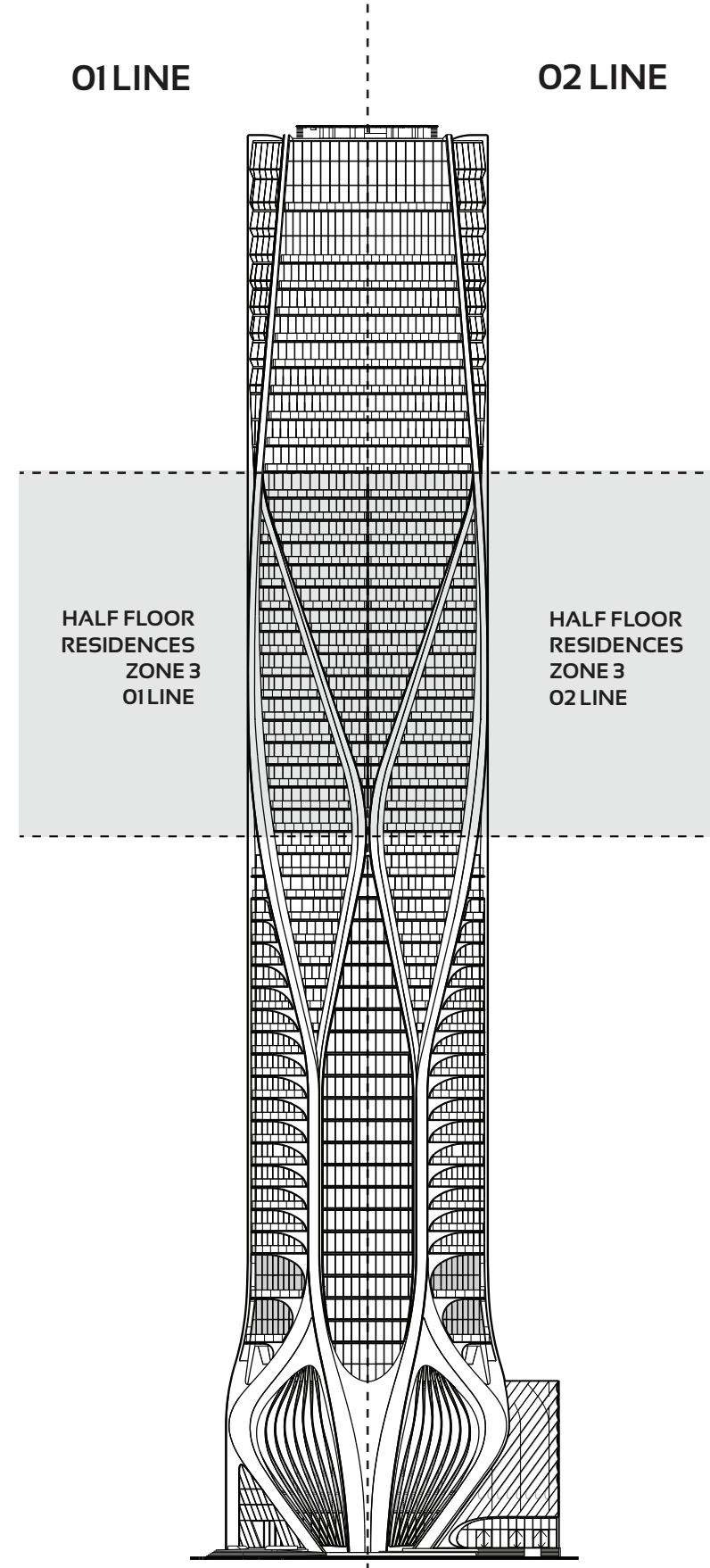
HALF FLOOR RESIDENCES - ZONE 3 - TYPE B - LEVELS 34 - 49

4 BEDROOM - 5.5 BATHROOM

INTERIORS: 4,843 SQFT 450 M²

TERRACE: 733 SQFT 68 M²

TOTAL AREA: 5,576 SQFT 518 M²



TOWER FEATURES

- ARCHITECTURE AND AMENITY SPACES DESIGNED BY ZAHA HADID ARCHITECTS
- LANDSCAPE ARCHITECTURE BY ENZO ANGILERI
- MUSEUM-QUALITY INTERIOR AND EXTERIOR ILLUMINATION
- AMENITY SPACE SCENTING CRAFTED BY 1229 OLFACTORY CONSULTANTS
- FUNCTIONALLY INTEGRATED SECURITY AND TECHNOLOGY PROGRAM

RESIDENTIAL FEATURES

- ESTATE-SIZE HALF-FLOOR, FULL-FLOOR, AND DUPLEX RESIDENCES
- MULTIPLE OVERSIZED BALCONIES IN EVERY RESIDENCE
- CEILING HEIGHTS TO 10 FEET IN MAIN LIVING AREAS
- FLOOR-TO-CEILING WINDOW WALLS
- CUSTOMIZED ILLUMINATION DESIGNED BY ULI + FRIENDS
- INTEGRATED HOME AUTOMATION BY CRESTRON
- CUSTOM EUROPEAN KITCHENS WITH GAGGENAU AND SUB-ZERO APPLIANCES

AMENITIES

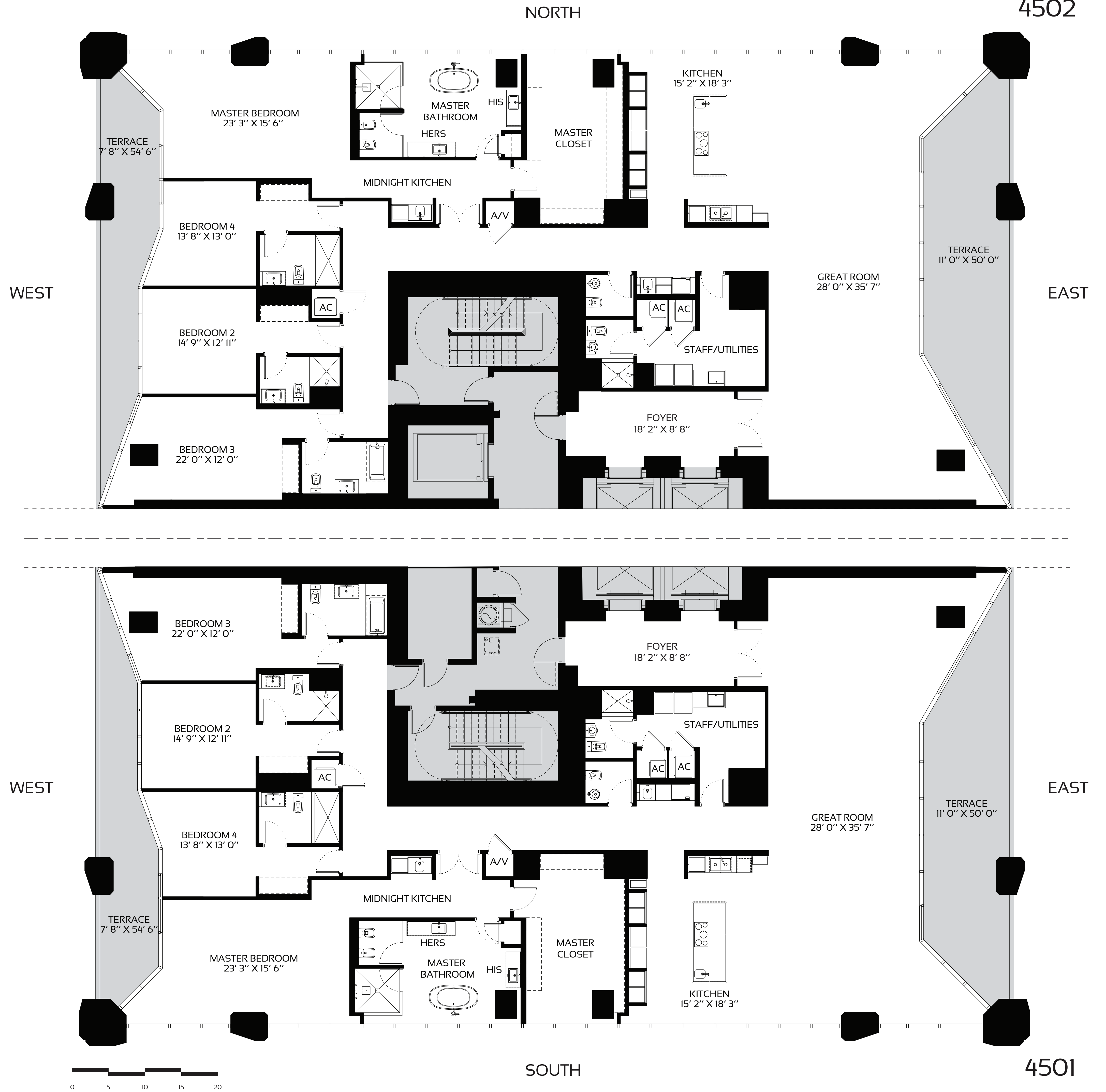
- OUTDOOR POOL & RECREATIONAL TERRACE
- FITNESS CENTER
- SPA
- INDOOR AQUATIC CENTER
- SKY LOUNGE
- PRIVATE ROOFTOP HELIPAD
- SECURE ON-SITE PARKING

SERVICES

- ON-SITE MANAGEMENT PERSONNEL
- CONCIERGE
- ON-SITE SECURITY PERSONNEL
- VALET PARKING

ORAL REPRESENTATIONS CANNOT BE RELIED UPON AS CORRECTLY STATING REPRESENTATIONS OF THE DEVELOPER. FOR CORRECT REPRESENTATIONS, MAKE REFERENCE TO THIS BROCHURE AND TO THE DOCUMENTS REQUIRED BY SECTION 718.503, FLORIDA STATUTES, TO BE FURNISHED BY A DEVELOPER TO A BUYER OR LESSEE.

Use and operation of the helipad are conditioned upon obtaining FAA and other governmental approvals. Approval has not yet been obtained. No assurance can be given about whether the approvals can be obtained, and/or if so, the timing of same. Stated dimensions are measured to the exterior boundaries of the exterior walls and the centerline of interior demising walls and in fact vary from the dimensions that would be determined by using the description and definition of the "Unit" set forth in the Declaration (which generally only includes the interior airspace between the perimeter walls and excludes interior structural components). Additionally, measurements of rooms set forth on any floor plan are generally taken at the greatest points of each given room (as if the room were a perfect rectangle), without regard for any cutouts. Accordingly, the area of the actual room will typically be smaller than the product obtained by multiplying the stated length times width. All dimensions are approximate, and all floor plans and development plans are subject to change. This is not intended to be an offer to sell, or solicitation to buy, condominium units in any other jurisdiction where prohibited by law, and your eligibility for purchase will depend upon your state of residency. This offering is made only by the prospectus for the condominium and no statement should be relied upon if not made in the prospectus. The sketches, renderings, graphic materials, plans, specifications, terms, conditions and statements contained in this brochure are proposed only, and the Developer reserves the right to modify, revise or withdraw any or all of same in its sole discretion and without prior notice. These drawings and depictions are conceptual only and are for the convenience of reference. They should not be relied upon as representations, express or implied, of the final detail of the building, the residences or the amenities. The developer expressly reserves the right to make modifications, revisions, and changes it deems desirable in its sole and absolute discretion. All depictions of furnishings, finishes, appliances, counters, soffits, floor coverings and other matters of detail, including, without limitation, items of finish and decoration, are conceptual only and are not necessarily included in each Unit. Consult your Agreement and the Prospectus for the items included with the Unit. The photographs contained in this brochure may be stock photography or have been taken off-site and are used to depict the spirit of the lifestyles to be achieved rather than any that may exist or that may be proposed, and are merely intended as illustrations of the activities and concepts depicted therein. FOR NY RESIDENTS: THE COMPLETE OFFERING TERMS ARE IN A CPS-12 APPLICATION AVAILABLE FROM THE OFFER OR FILE NO. CP16-0131. The building is currently under construction but not yet completed.



4502

4501

ONE THOUSAND MUSEUM

BY ZAHA HADID ARCHITECTS

Miami Residence Realty • 305-751-1000 • www.MiamiResidence.com

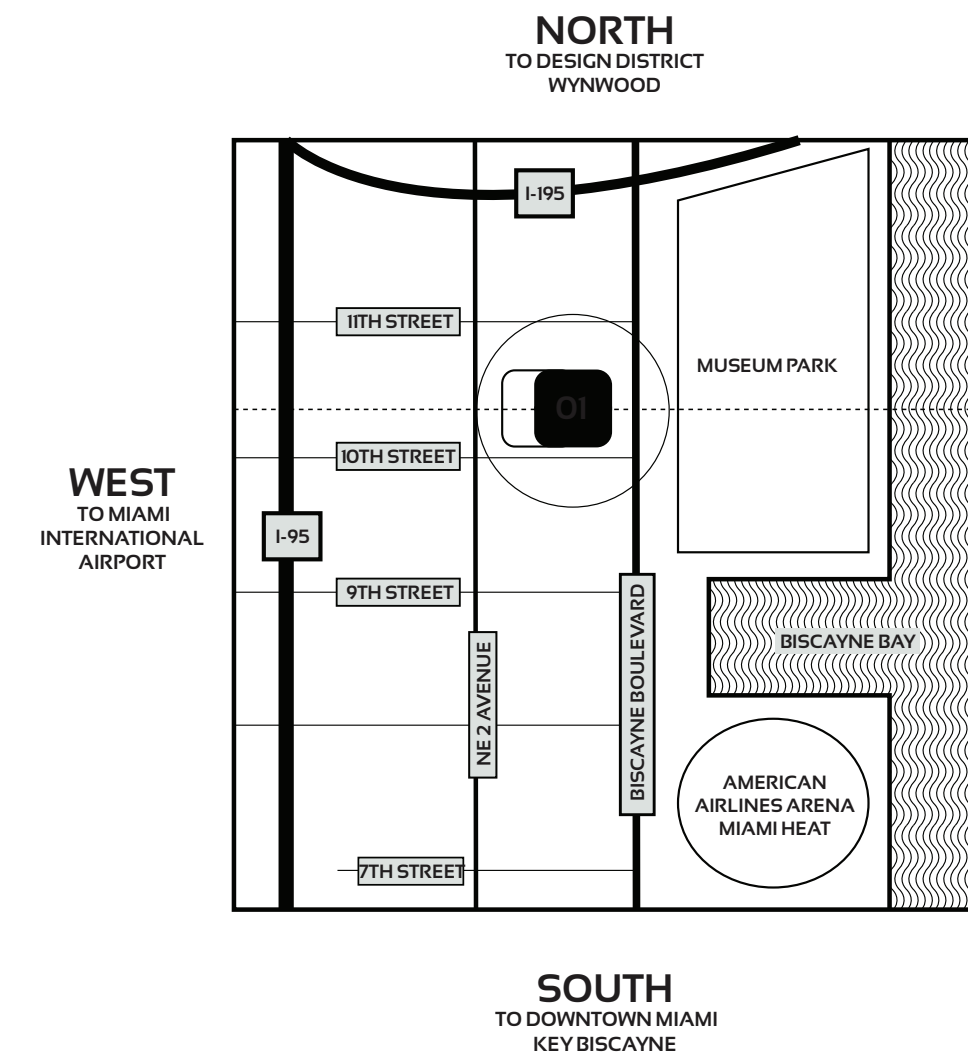
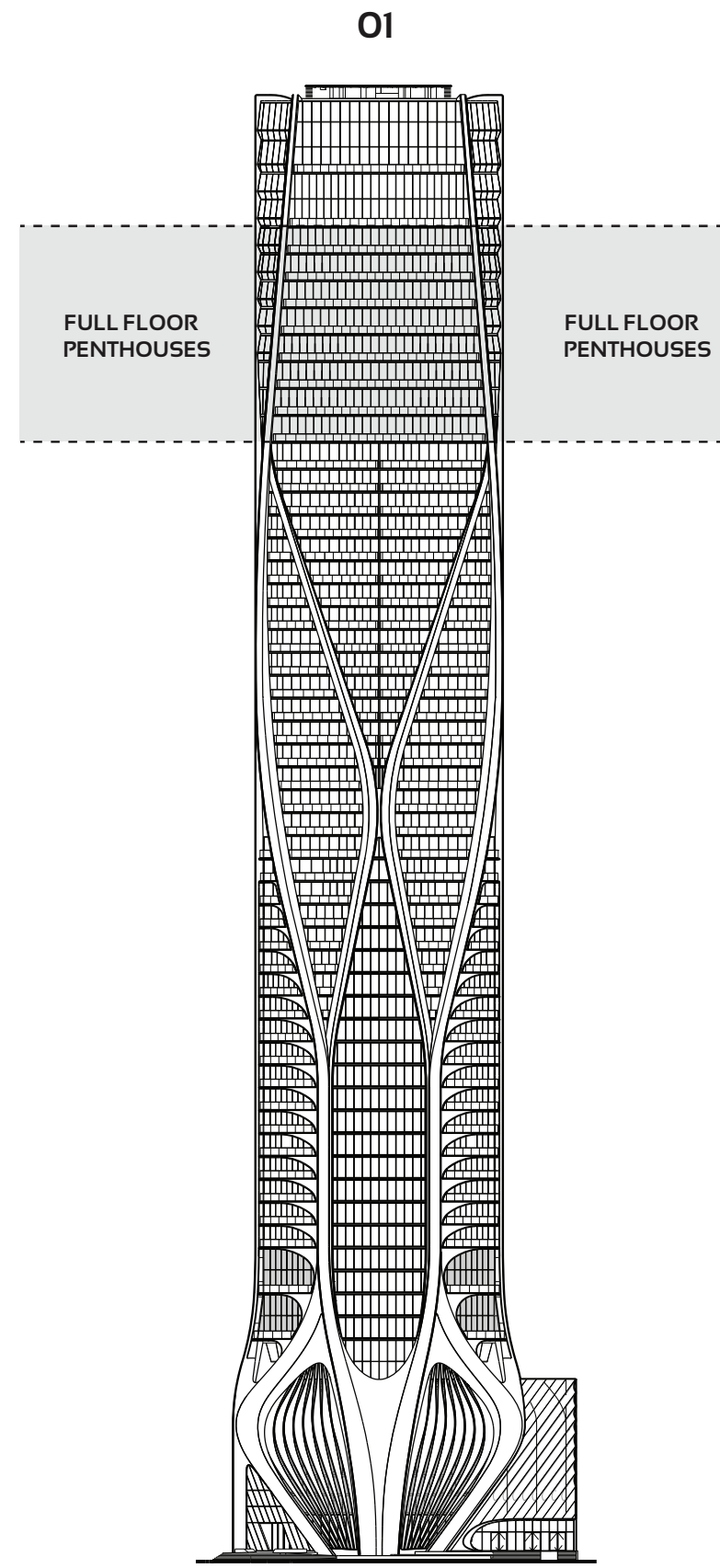
FULL FLOOR PENTHOUSES - ZONE 4 - LEVELS 50-57

5 BEDROOM - 6 BATHROOM - 1 POWDER ROOM

INTERIORS: 10,338 SQFT 960 M²

TERRACE: 1,200 SQFT 111 M²

TOTAL AREA: 11,538 SQFT 1,072 M²



TOWER FEATURES

- ARCHITECTURE AND AMENITY SPACES DESIGNED BY ZAHA HADID ARCHITECTS
- LANDSCAPE ARCHITECTURE BY ENZO ENEA
- MUSEUM-QUALITY INTERIOR AND EXTERIOR ILLUMINATION
- AMENITY SPACE SCENTING CRAFTED BY 1229 OLFACTORY CONSULTANTS
- FUNCTIONALLY INTEGRATED SECURITY AND TECHNOLOGY PROGRAM

RESIDENTIAL FEATURES

- ESTATE-SIZE HALF-FLOOR, FULL-FLOOR, AND DUPLEX RESIDENCES
- MULTIPLE OVERSIZED BALCONIES IN EVERY RESIDENCE
- CEILING HEIGHTS TO 12 FEET IN MAIN LIVING AREAS
- FLOOR-TO-CEILING WINDOW WALLS
- CUSTOMIZED ILLUMINATION DESIGNED BY ULI + FRIENDS
- INTEGRATED HOME AUTOMATION BY CRESTRON
- CUSTOM EUROPEAN KITCHENS WITH GAGGENAU AND SUB-ZERO APPLIANCES

AMENITIES

- OUTDOOR POOL & RECREATIONAL TERRACE
- FITNESS CENTER
- SPA
- INDOOR AQUATIC CENTER
- SKY LOUNGE
- PRIVATE ROOFTOP HELIPAD
- SECURE ON-SITE PARKING

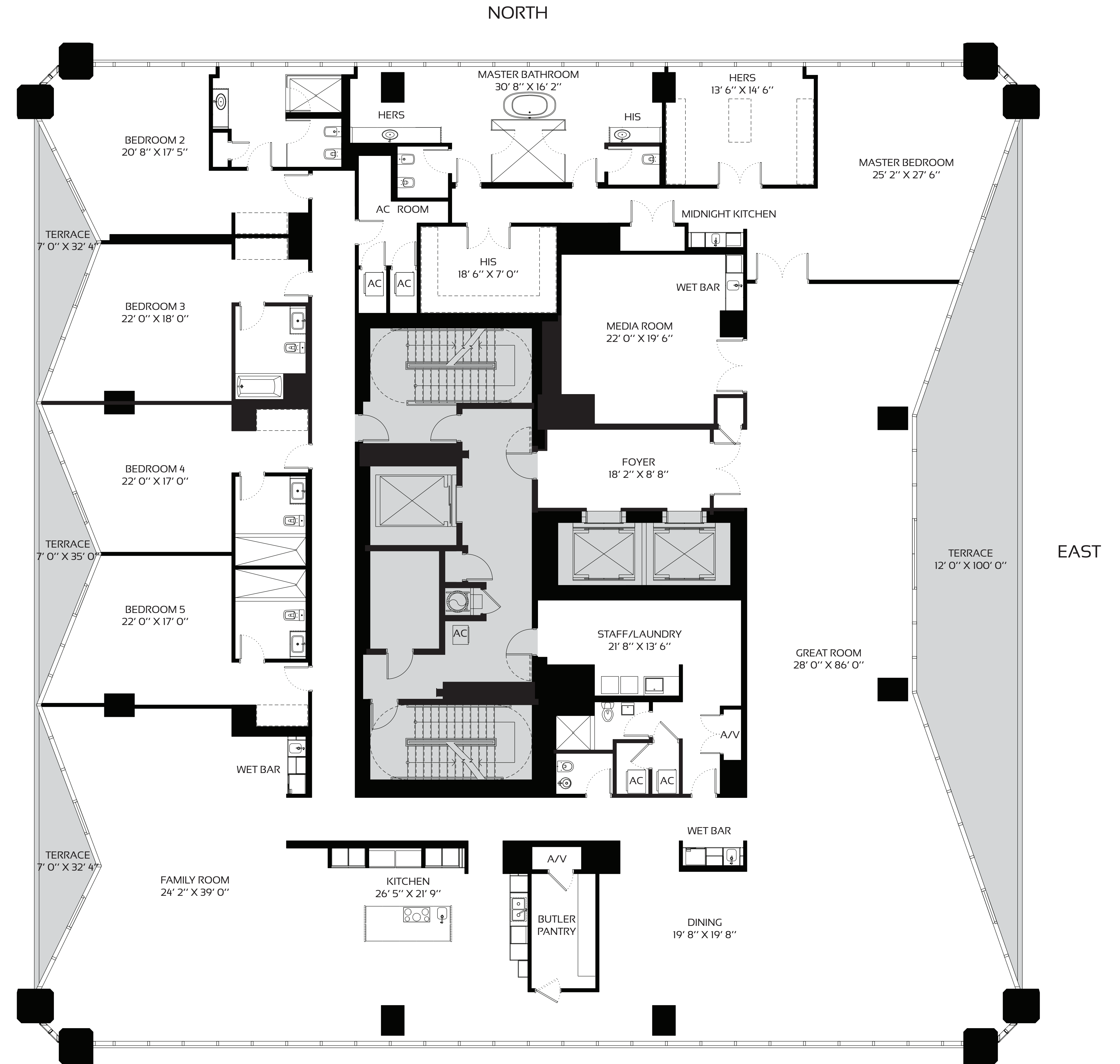
SERVICES

- ON-SITE MANAGEMENT PERSONNEL
- CONCIERGE
- ON-SITE SECURITY PERSONNEL
- VALET PARKING

ORAL REPRESENTATIONS CANNOT BE RELIED UPON AS CORRECTLY STATING REPRESENTATIONS OF THE DEVELOPER. FOR CORRECT REPRESENTATIONS, MAKE REFERENCE TO THIS BROCHURE AND TO THE DOCUMENTS REQUIRED BY SECTION 718.503, FLORIDA STATUTES, TO BE FURNISHED BY A DEVELOPER TO A BUYER OR LESSEE.

Use and operation of the helipad are conditioned upon obtaining FAA and other governmental approvals. Approval has not yet been obtained. No assurance can be given about whether the approvals can be obtained, and/or if so, the timing of same. Stated dimensions are measured to the exterior boundaries of the exterior walls and the centerline of interior demising walls and in fact vary from the dimensions that would be determined by using the description and definition of the "Unit" set forth in the Declaration (which generally only includes the interior airspace between the perimeter walls and excludes interior structural components). Additionally, measurements of rooms set forth on any floor plan are generally taken at the greatest points of each given room (as if the room were a perfect rectangle), without regard for any cutouts. Accordingly, the area of the actual room will typically be smaller than the product obtained by multiplying the stated length times width. All dimensions are approximate, and all floor plans and development plans are subject to change. This is not intended to be an offer to sell, or solicitation to buy, condominium units in any other jurisdiction where prohibited by law, and your eligibility for purchase will depend upon your state of residency. This offering is made only by the prospectus for the condominium and no statement should be relied upon if not made in the prospectus. The sketches, renderings, graphic materials, plans, specifications, terms, conditions and statements contained in this brochure are proposed only, and the Developer reserves the right to modify, revise or withdraw any or all of same in its sole discretion and without prior notice. These drawings and depictions are conceptual only and are for the convenience of reference. They should not be relied upon as representations, express or implied, of the final detail of the building, the residences or the amenities. The developer expressly reserves the right to make modifications, revisions, and changes it deems desirable in its sole and absolute discretion. All depictions of furnishings, finishes, appliances, counters, soffits, floor coverings and other matters of detail, including, without limitation, items of finish and decoration, are conceptual only and are not necessarily included in each Unit. Consult your Agreement and the Prospectus for the items included with the Unit. The photographs contained in this brochure may be stock photography or have been taken off-site and are used to depict the spirit of the lifestyles to be achieved rather than any that may exist or that may be proposed, and are merely intended as illustrations of the activities and concepts depicted therein. FOR NY RESIDENTS: THE COMPLETE OFFERING TERMS ARE IN A CPS-12 APPLICATION AVAILABLE FROM THE OFFER OR FILE NO. CP16-0131. The building is currently under construction but not yet completed.

WEST



0 5 10 15 20

SOUTH

5101