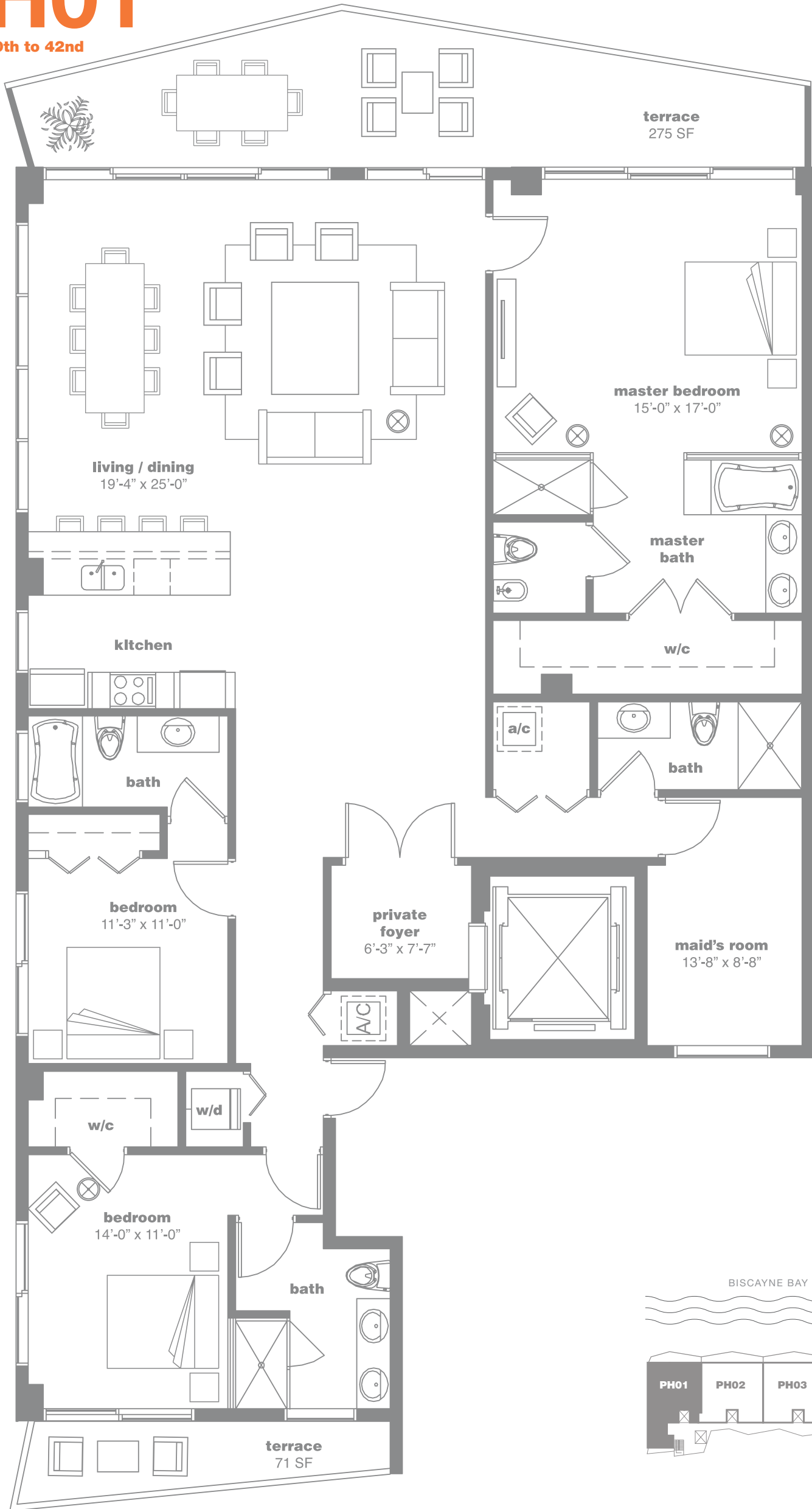


PH01

levels 40th to 42nd



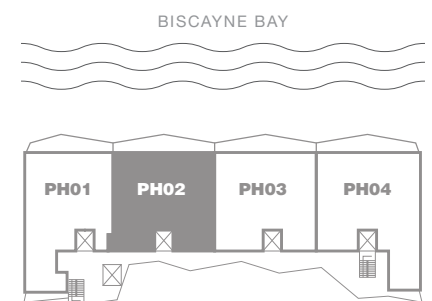
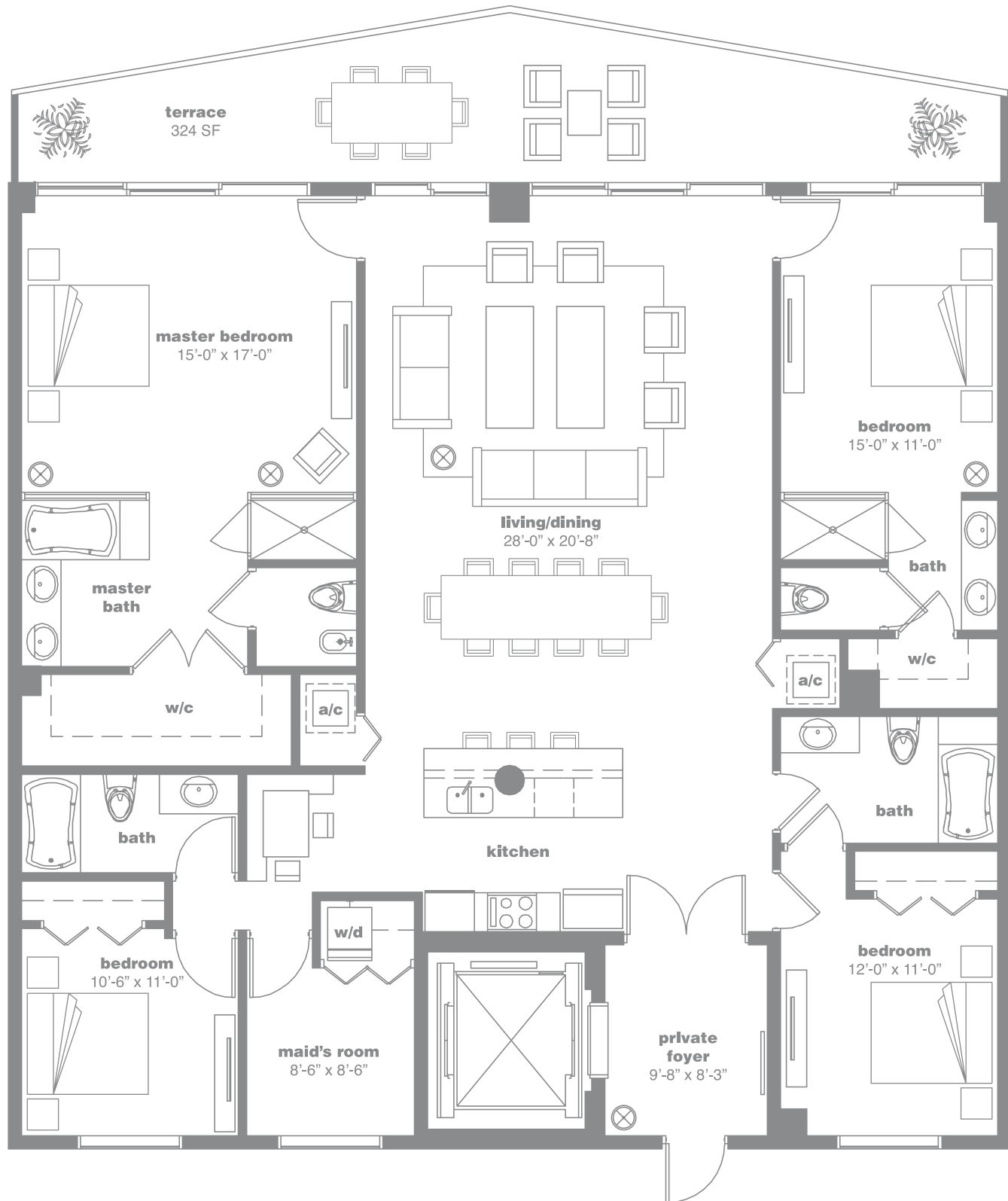
3 Bedrooms, 4 Bathrooms, Maid's Room

AC: 2,416 Sq. Ft. 224.5 Sq. Mt. // Terrace: 346 Sq. Ft. 32.2 Sq. Mt. // Total Sq. Ft.: 2,762 // Total Sq. Mt.: 256.7

Stated dimensions are measured to the exterior boundaries of the exterior walls and the centerline of interior demising walls and in fact vary from the dimensions that would be determined by using the description and definition of the "Unit" set forth in the Declaration (which generally only includes the interior airspace between the perimeter walls and excludes interior structural components). For your reference, the area of the Unit, determined in accordance with those defined unit boundaries, is + or - 2,264 sq. ft. for units 08. Note that measurements of rooms set forth on this floor plan are generally taken at the greatest points of each given room (as if the room were a perfect rectangle), without regard for any cutouts. Accordingly, the area of the actual room will typically be smaller than the product obtained by multiplying the stated length times width. All dimensions are approximate and may vary with actual construction, and all floor plans and development plans are subject to change.

PH02

levels 40th to 42nd



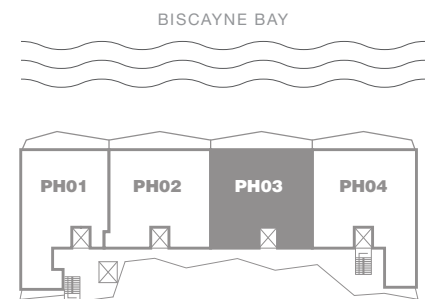
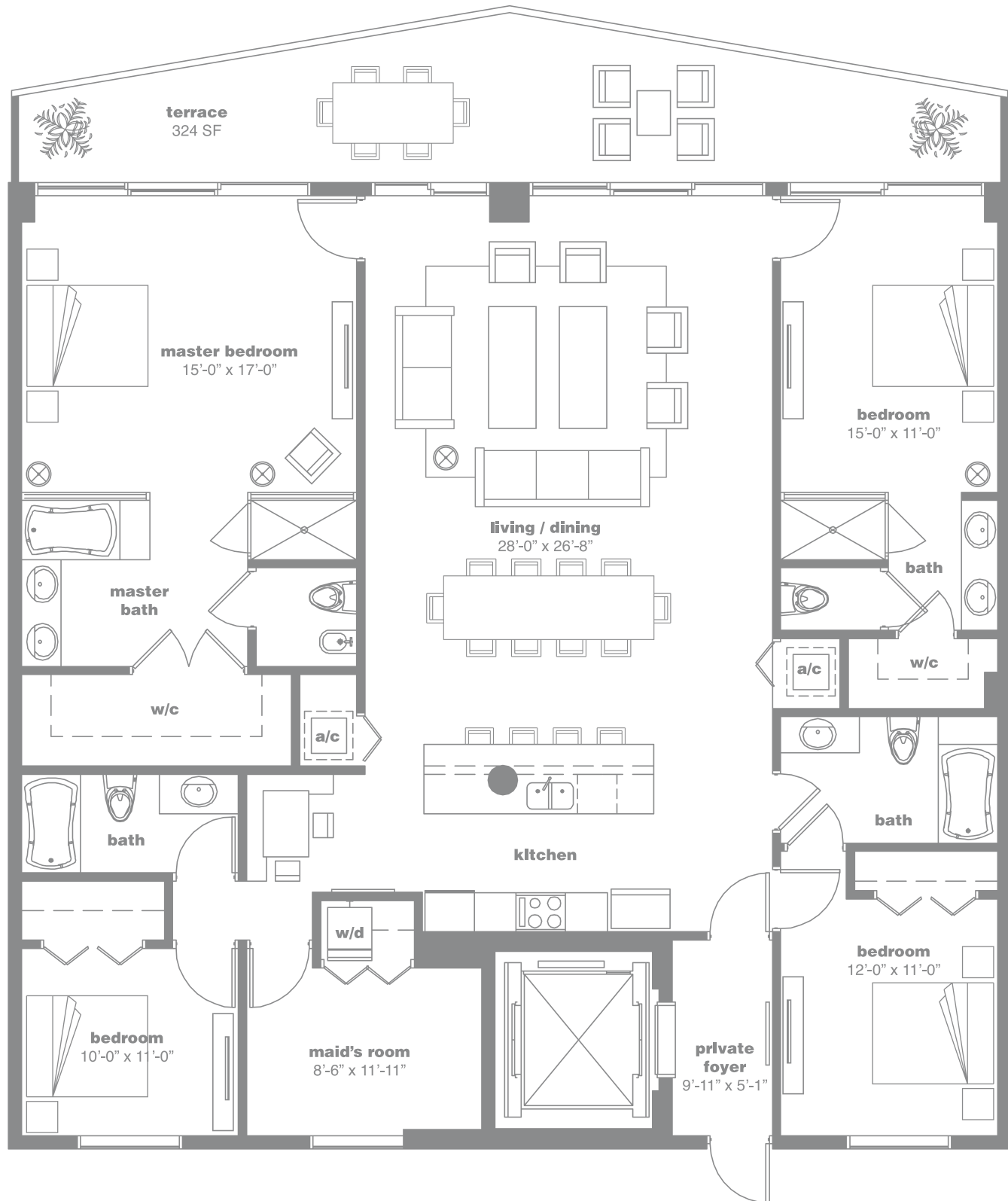
4 Bedrooms, 4 Bathrooms, Maid's Room

AC: 2,346 Sq. Ft. 218 Sq. Mt. // Terrace: 324 Sq. Ft. 30.2 Sq. Mt. // Total Sq. Ft.: 2,670 // Total Sq. Mt.: 248.2

Stated dimensions are measured to the exterior boundaries of the exterior walls and the centerline of interior demising walls and in fact vary from the dimensions that would be determined by using the description and definition of the "Unit" set forth in the Declaration (which generally only includes the interior airspace between the perimeter walls and excludes interior structural components). For your reference, the area of the Unit, determined in accordance with those defined unit boundaries, is + or - 2,248 sq. ft. for units 08. Note that measurements of rooms set forth on this floor plan are generally taken at the greatest points of each given room (as if the room were a perfect rectangle), without regard for any cutouts. Accordingly, the area of the actual room will typically be smaller than the product obtained by multiplying the stated length times width. All dimensions are approximate and may vary with actual construction, and all floor plans and development plans are subject to change.

PH03

levels 40th to 42nd



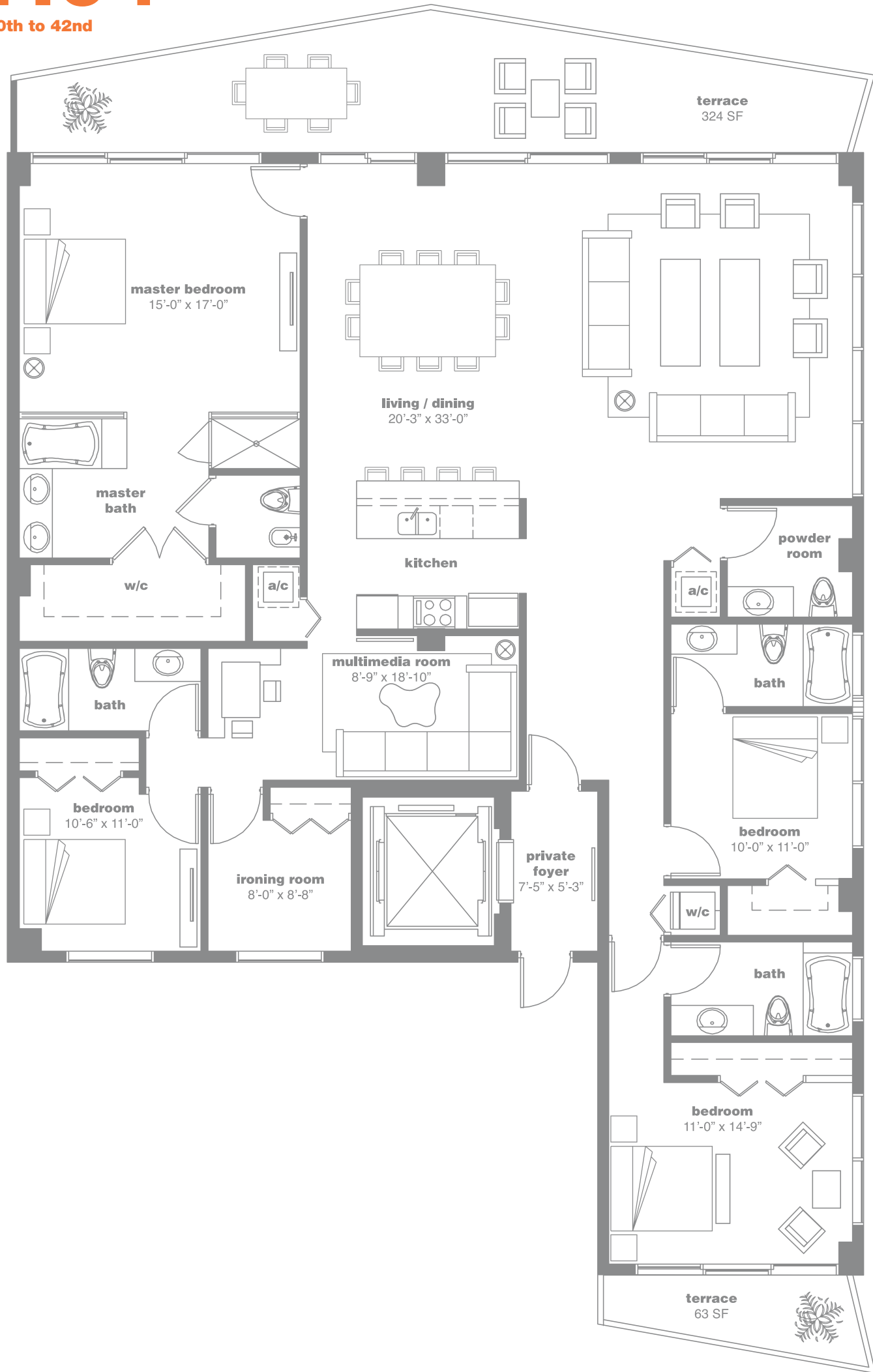
4 Bedrooms, 4 Bathrooms, Maid's Room

AC: 2,346 Sq. Ft. 218 Sq. Mt. // Terrace: 324 Sq. Ft. 30.2 Sq.. Mt. // Total Sq. Ft.: 2,670 // Total Sq. Mt.: 248.2

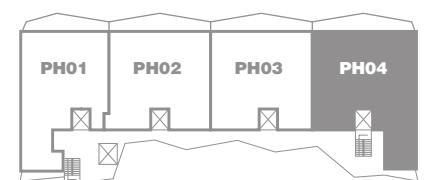
Stated dimensions are measured to the exterior boundaries of the exterior walls and the centerline of interior demising walls and in fact vary from the dimensions that would be determined by using the description and definition of the "Unit" set forth in the Declaration (which generally only includes the interior airspace between the perimeter walls and excludes interior structural components). For your reference, the area of the Unit, determined in accordance with those defined unit boundaries, is + or - 2,250 sq. ft. for units 08. Note that measurements of rooms set forth on this floor plan are generally taken at the greatest points of each given room (as if the room were a perfect rectangle), without regard for any cutouts. Accordingly, the area of the actual room will typically be smaller than the product obtained by multiplying the stated length times width. All dimensions are approximate and may vary with actual construction, and all floor plans and development plans are subject to change.

PH04

levels 40th to 42nd



BISCAYNE BAY



4 Bedrooms, 4 Bathrooms, Media Room

AC: 2,714 Sq. Ft. 252.2 Sq. Mt. // Terrace: 324 Sq. Ft. 30.2 Sq. Mt. // Total Sq. Ft.: 3,038 // Total Sq. Mt.: 282.4

Stated dimensions are measured to the exterior boundaries of the exterior walls and the centerline of interior demising walls and in fact vary from the dimensions that would be determined by using the description and definition of the "Unit" set forth in the Declaration (which generally only includes the interior airspace between the perimeter walls and excludes interior structural components). For your reference, the area of the Unit, determined in accordance with those defined unit boundaries, is + or - 2,569 sq. ft. for units 08. Note that measurements of rooms set forth on this floor plan are generally taken at the greatest points of each given room (as if the room were a perfect rectangle), without regard for any cutouts. Accordingly, the area of the actual room will typically be smaller than the product obtained by multiplying the stated length times width. All dimensions are approximate and may vary with actual construction, and all floor plans and development plans are subject to change.