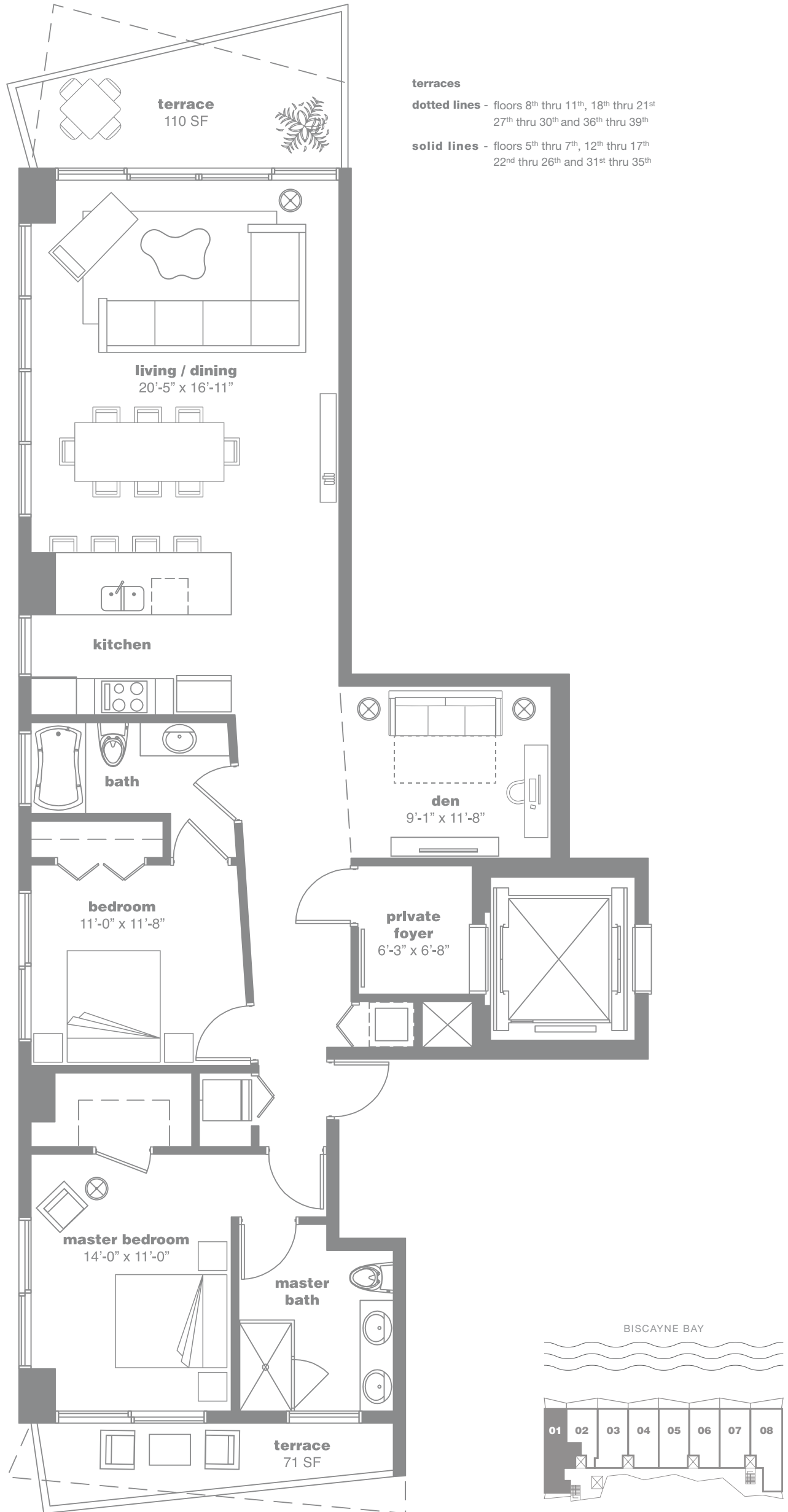


residence  
**01**  
levels 5th to 39th



## 2 Bedrooms + Den / 2 Bathrooms

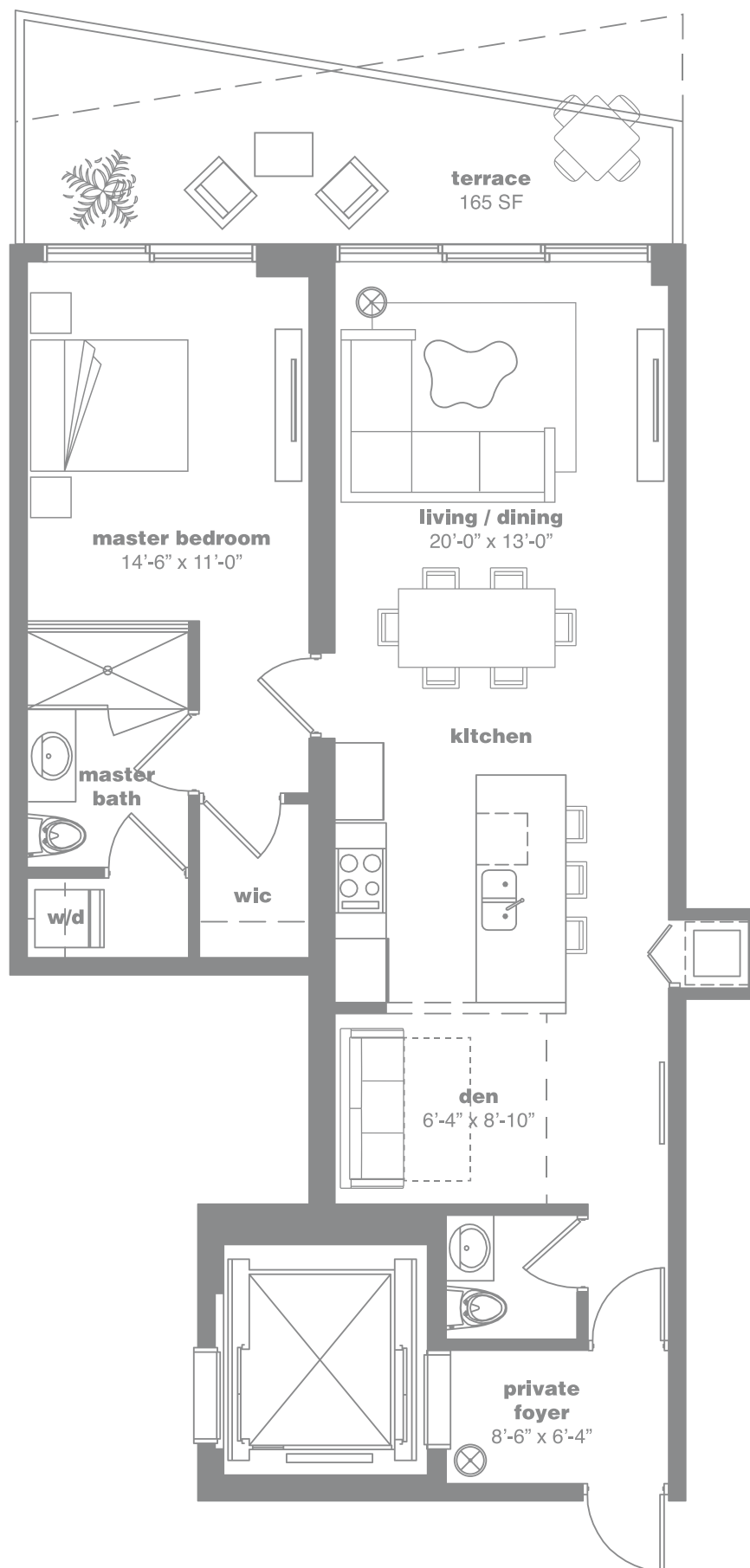
AC: 1,435 Sq. Ft. 134.70 Sq. Mt. // Terrace: 181 Sq. Ft. 16.8 Sq. Mt. // Total Sq. Ft.: 1,616 // Total Sq. Mt.: 150.1

Stated dimensions are measured to the exterior boundaries of the exterior walls and the centerline of interior demising walls and in fact vary from the dimensions that would be determined by using the description and definition of the "Unit" set forth in the Declaration (which generally only includes the interior airspace between the perimeter walls and excludes interior structural components). For your reference, the area of the Unit, determined in accordance with those defined unit boundaries, is + or - 1,311 sq. ft. for units 01. Note that measurements of rooms set forth on this floor plan are generally taken at the greatest points of each given room (as if the room were a perfect rectangle), without regard for any cutouts. Accordingly, the area of the actual room will typically be smaller than the product obtained by multiplying the stated length times width. All dimensions are approximate and may vary with actual construction, and all floor plans and development plans are subject to change.

residence

02

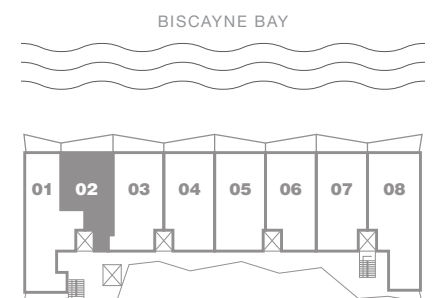
levels 5th to 39th



terraces

**dotted lines** - floors 8<sup>th</sup> thru 11<sup>th</sup>, 18<sup>th</sup> thru 21<sup>st</sup>  
27<sup>th</sup> thru 30<sup>th</sup> and 36<sup>th</sup> thru 39<sup>th</sup>

**solid lines** - floors 5<sup>th</sup> thru 7<sup>th</sup>, 12<sup>th</sup> thru 17<sup>th</sup>  
22<sup>nd</sup> thru 26<sup>th</sup> and 31<sup>st</sup> thru 35<sup>th</sup>



## 1 Bedroom + Den / 1 1/2 Bathroom

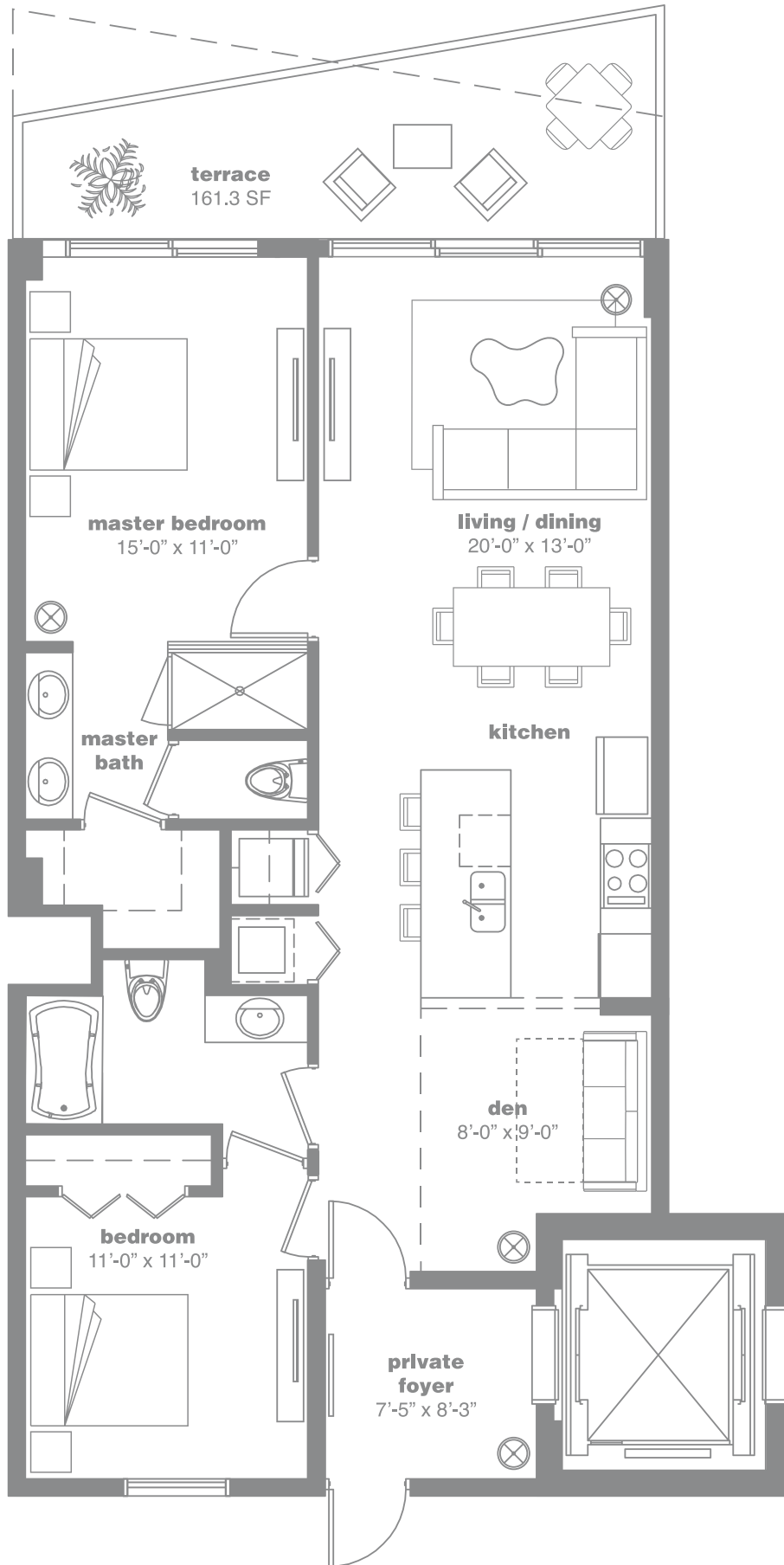
AC: 973 Sq. Ft. 86.2 Sq. Mt. // Terrace: 165 Sq. Ft. 15.3 Sq. Mt. // Total Sq. Ft.: 1,129 // Total Sq. Mt.: 104.8

Stated dimensions are measured to the exterior boundaries of the exterior walls and the centerline of interior demising walls and in fact vary from the dimensions that would be determined by using the description and definition of the "Unit" set forth in the Declaration (which generally only includes the interior airspace between the perimeter walls and excludes interior structural components). For your reference, the area of the Unit, determined in accordance with those defined unit boundaries, is + or - 854 sq. ft. for units 02. Note that measurements of rooms set forth on this floor plan are generally taken at the greatest points of each given room (as if the room were a perfect rectangle), without regard for any cutouts. Accordingly, the area of the actual room will typically be smaller than the product obtained by multiplying the stated length times width. All dimensions are approximate and may vary with actual construction, and all floor plans and development plans are subject to change.

residence

# 03

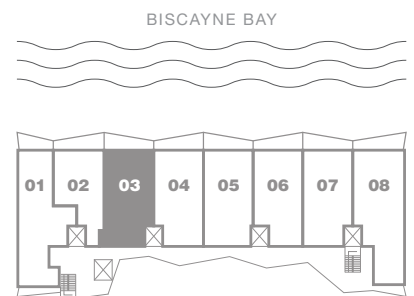
levels 5th to 39th



**terraces**

**dotted lines** - floors 8<sup>th</sup> thru 11<sup>th</sup>, 18<sup>th</sup> thru 21<sup>st</sup>  
27<sup>th</sup> thru 30<sup>th</sup> and 36<sup>th</sup> thru 39<sup>th</sup>

**solid lines** - floors 5<sup>th</sup> thru 7<sup>th</sup>, 12<sup>th</sup> thru 17<sup>th</sup>  
22<sup>nd</sup> thru 26<sup>th</sup> and 31<sup>st</sup> thru 35<sup>th</sup>



## 2 Bedrooms + Den / 2 Bathrooms

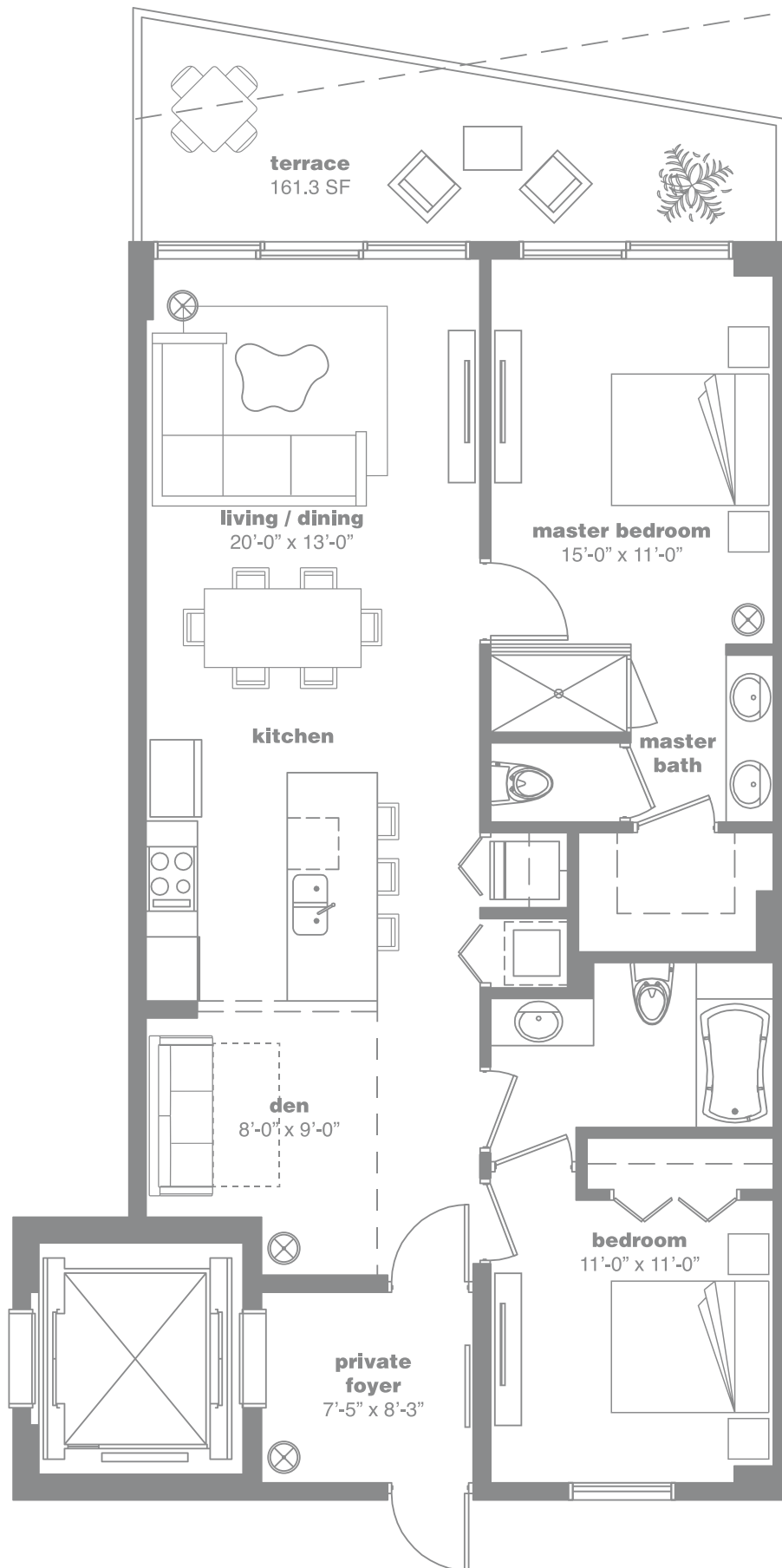
AC: 1,173 Sq. Ft. 108.9 Sq. Mt. // Terrace: 161.3 Sq. Ft. 15 Sq. Mt. // Total Sq. Ft.: 1,335 // Total Sq. Mt.: 124

Stated dimensions are measured to the exterior boundaries of the exterior walls and the centerline of interior demising walls and in fact vary from the dimensions that would be determined by using the description and definition of the "Unit" set forth in the Declaration (which generally only includes the interior airspace between the perimeter walls and excludes interior structural components). For your reference, the area of the Unit, determined in accordance with those defined unit boundaries, is + or - 1,107 sq. ft. for units 03. Note that measurements of rooms set forth on this floor plan are generally taken at the greatest points of each given room (as if the room were a perfect rectangle), without regard for any cutouts. Accordingly, the area of the actual room will typically be smaller than the product obtained by multiplying the stated length times width. All dimensions are approximate and may vary with actual construction, and all floor plans and development plans are subject to change.

residence

04

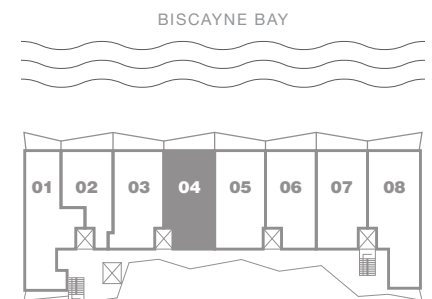
levels 4th to 39th



**terraces**

**dotted lines** - floors 8<sup>th</sup> thru 11<sup>th</sup>, 18<sup>th</sup> thru 21<sup>st</sup>  
27<sup>th</sup> thru 30<sup>th</sup> and 36<sup>th</sup> thru 39<sup>th</sup>

**solid lines** - floors 4<sup>th</sup> thru 7<sup>th</sup>, 12<sup>th</sup> thru 17<sup>th</sup>  
22<sup>nd</sup> thru 26<sup>th</sup> and 31<sup>st</sup> thru 35<sup>th</sup>



## 2 Bedrooms + Den / 2 Bathrooms

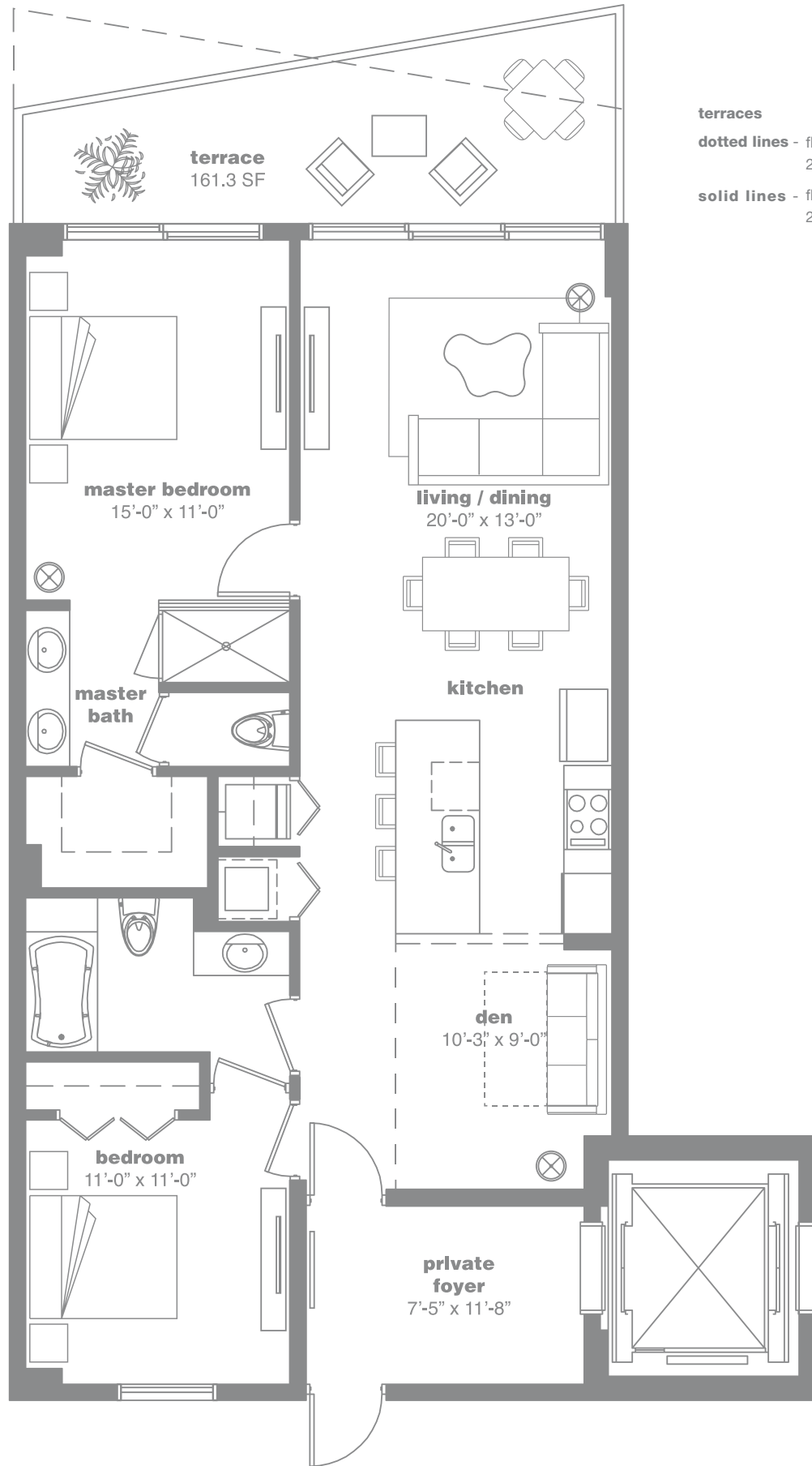
AC: 1,173 Sq. Ft. 108.9 Sq. Mt. // Terrace: 161.3 Sq. Ft. 15 Sq.. Mt. // Total Sq. Ft.: 1,335 // Total Sq. Mt.: 124

Stated dimensions are measured to the exterior boundaries of the exterior walls and the centerline of interior demising walls and in fact vary from the dimensions that would be determined by using the description and definition of the "Unit" set forth in the Declaration (which generally only includes the interior airspace between the perimeter walls and excludes interior structural components). For your reference, the area of the Unit, determined in accordance with those defined unit boundaries, is + or - 1,104 sq. ft. for units 04. Note that measurements of rooms set forth on this floor plan are generally taken at the greatest points of each given room (as if the room were a perfect rectangle), without regard for any cutouts. Accordingly, the area of the actual room will typically be smaller than the product obtained by multiplying the stated length times width. All dimensions are approximate and may vary with actual construction, and all floor plans and development plans are subject to change.

residence

05

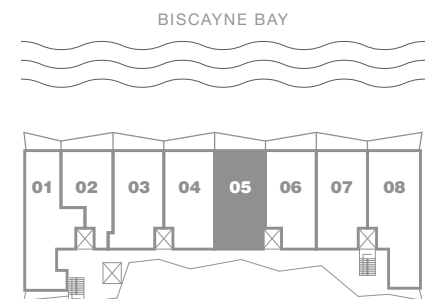
levels 4th to 39th



**terraces**

**dotted lines** - floors 8<sup>th</sup> thru 11<sup>th</sup>, 18<sup>th</sup> thru 21<sup>st</sup>  
27<sup>th</sup> thru 30<sup>th</sup> and 36<sup>th</sup> thru 39<sup>th</sup>

**solid lines** - floors 4<sup>th</sup> thru 7<sup>th</sup>, 12<sup>th</sup> thru 17<sup>th</sup>  
22<sup>nd</sup> thru 26<sup>th</sup> and 31<sup>st</sup> thru 35<sup>th</sup>

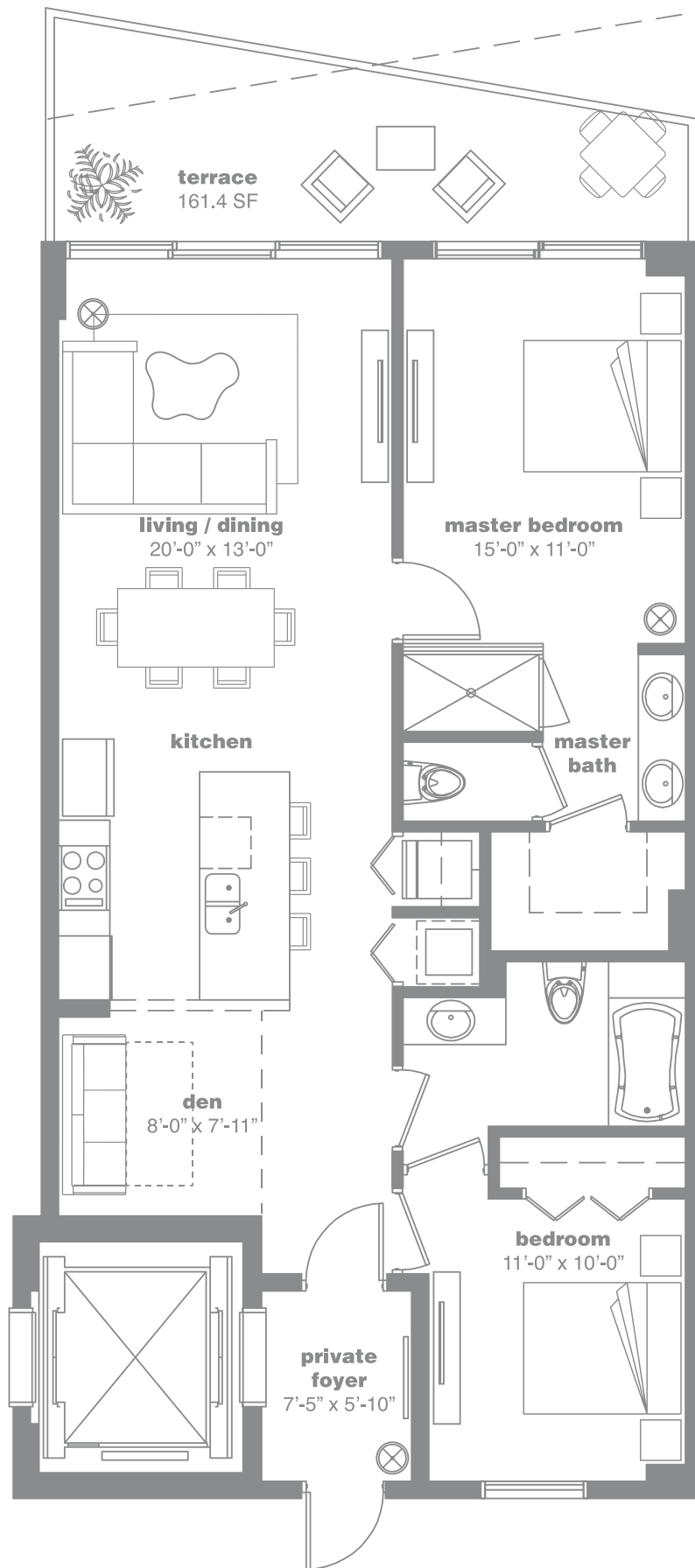


## 2 Bedrooms + Den / 2 Bathrooms

AC: 1,208 Sq. Ft. 112.2 Sq. Mt. // Terrace: 161.3 Sq. Ft. 15 Sq.. Mt. // Total Sq. Ft.: 1,370 // Total Sq. Mt.: 127.2

Stated dimensions are measured to the exterior boundaries of the exterior walls and the centerline of interior demising walls and in fact vary from the dimensions that would be determined by using the description and definition of the "Unit" set forth in the Declaration (which generally only includes the interior airspace between the perimeter walls and excludes interior structural components). For your reference, the area of the Unit, determined in accordance with those defined unit boundaries, is + or -1,143 sq. ft. for units 05. Note that measurements of rooms set forth on this floor plan are generally taken at the greatest points of each given room (as if the room were a perfect rectangle), without regard for any cutouts. Accordingly, the area of the actual room will typically be smaller than the product obtained by multiplying the stated length times width. All dimensions are approximate and may vary with actual construction, and all floor plans and development plans are subject to change.

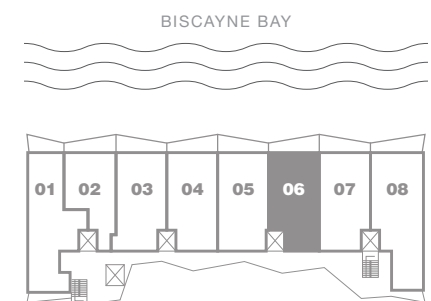
residence  
**06**  
levels 4th to 39th



**terraces**

**dotted lines** - floors 8<sup>th</sup> thru 11<sup>th</sup>, 18<sup>th</sup> thru 21<sup>st</sup>, 27<sup>th</sup> thru 30<sup>th</sup> and 36<sup>th</sup> thru 39<sup>th</sup>

**solid lines** - floors 4<sup>th</sup> thru 7<sup>th</sup>, 12<sup>th</sup> thru 17<sup>th</sup>, 22<sup>nd</sup> thru 26<sup>th</sup> and 31<sup>st</sup> thru 35<sup>th</sup>



## 2 Bedrooms + Den / 2 Bathrooms

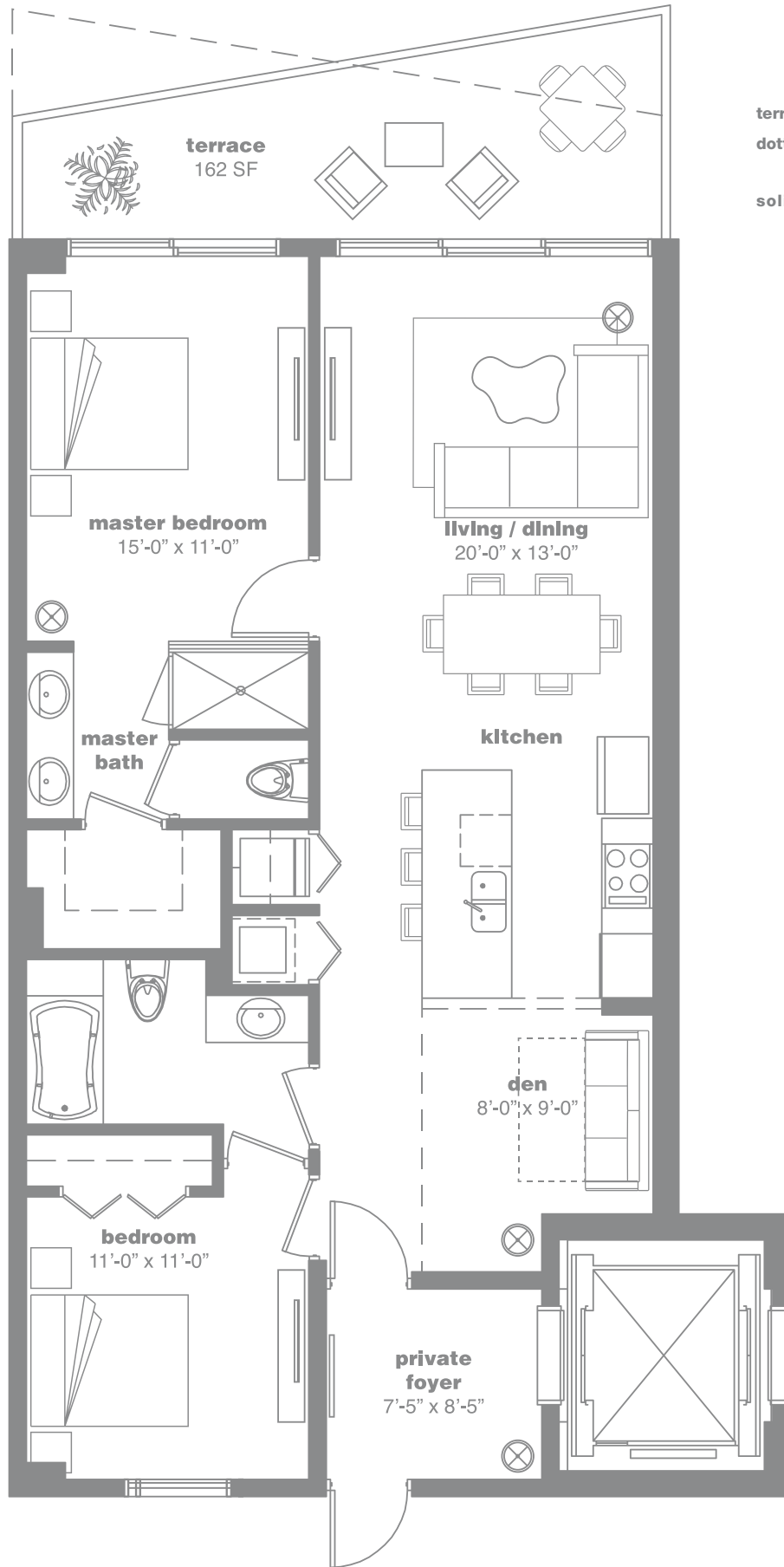
AC: 1,138 Sq. Ft. 105.7 Sq. Mt. // Terrace: 161.4 Sq. Ft. 15 Sq. Mt. // Total Sq. Ft. : 1,300 // Total Sq. Mt.: 120.7

Stated dimensions are measured to the exterior boundaries of the exterior walls and the centerline of interior demising walls and in fact vary from the dimensions that would be determined by using the description and definition of the "Unit" set forth in the Declaration (which generally only includes the interior airspace between the perimeter walls and excludes interior structural components). For your reference, the area of the Unit, determined in accordance with those defined unit boundaries, is + or - 1,073 sq. ft. for units 06. Note that measurements of rooms set forth on this floor plan are generally taken at the greatest points of each given room (as if the room were a perfect rectangle), without regard for any cutouts. Accordingly, the area of the actual room will typically be smaller than the product obtained by multiplying the stated length times width. All dimensions are approximate and may vary with actual construction, and all floor plans and development plans are subject to change.

residence

07

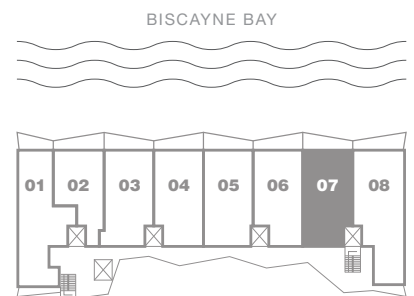
levels 4th to 39th



**terraces**

**dotted lines** - floors 8<sup>th</sup> thru 11<sup>th</sup>, 18<sup>th</sup> thru 21<sup>st</sup>  
27<sup>th</sup> thru 30<sup>th</sup> and 36<sup>th</sup> thru 39<sup>th</sup>

**solid lines** - floors 4<sup>th</sup> thru 7<sup>th</sup>, 12<sup>th</sup> thru 17<sup>th</sup>  
22<sup>nd</sup> thru 26<sup>th</sup> and 31<sup>st</sup> thru 35<sup>th</sup>

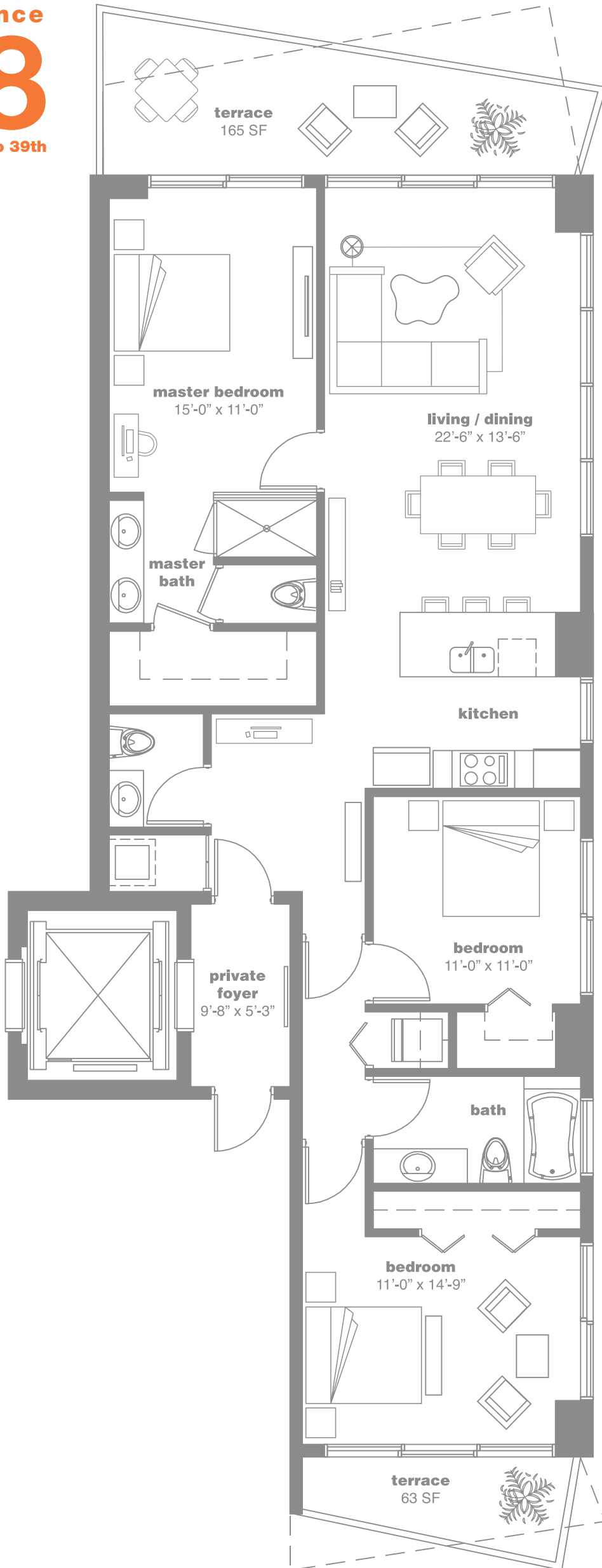


## 2 Bedrooms + Den / 2 Bathrooms

AC: 1,180 Sq. Ft. 109.7 Sq. Mt. // Terrace: 162 Sq. Ft. 15 Sq. Mt. // Total Sq. Ft.: 1,342 // Total Sq. Mt.: 124.6

Stated dimensions are measured to the exterior boundaries of the exterior walls and the centerline of interior demising walls and in fact vary from the dimensions that would be determined by using the description and definition of the "Unit" set forth in the Declaration (which generally only includes the interior airspace between the perimeter walls and excludes interior structural components). For your reference, the area of the Unit, determined in accordance with those defined unit boundaries, is + or - 1,095 sq. ft. for units 07. Note that measurements of rooms set forth on this floor plan are generally taken at the greatest points of each given room (as if the room were a perfect rectangle), without regard for any cutouts. Accordingly, the area of the actual room will typically be smaller than the product obtained by multiplying the stated length times width. All dimensions are approximate and may vary with actual construction, and all floor plans and development plans are subject to change.

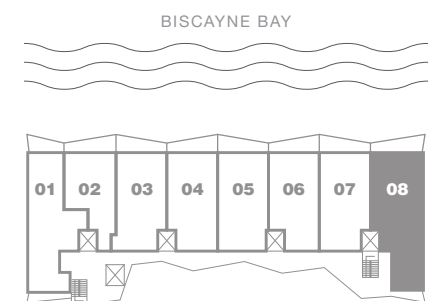
residence  
**08**  
levels 3rd to 39th



**terraces**

**dotted lines** - floors 8<sup>th</sup> thru 11<sup>th</sup>, 18<sup>th</sup> thru 21<sup>st</sup>  
27<sup>th</sup> thru 30<sup>th</sup> and 36<sup>th</sup> thru 39<sup>th</sup>

**solid lines** - floors 3<sup>rd</sup> thru 7<sup>th</sup>, 12<sup>th</sup> thru 17<sup>th</sup>  
22<sup>nd</sup> thru 26<sup>th</sup> and 31<sup>st</sup> thru 35<sup>th</sup>



## 3 Bedrooms, 2 1/2 Bathrooms

AC: 1,530 Sq. Ft. 142.1 Sq. Mt. // Terrace: 228 Sq. Ft. 21.2 Sq. Mt. // Total Sq. Ft.: 1,758 // Total Sq. Mt.: 163.3

Stated dimensions are measured to the exterior boundaries of the exterior walls and the centerline of interior demising walls and in fact vary from the dimensions that would be determined by using the description and definition of the "Unit" set forth in the Declaration (which generally only includes the interior airspace between the perimeter walls and excludes interior structural components). For your reference, the area of the Unit, determined in accordance with those defined unit boundaries, is + or - 1,395 sq. ft. for units 08. Note that measurements of rooms set forth on this floor plan are generally taken at the greatest points of each given room (as if the room were a perfect rectangle), without regard for any cutouts. Accordingly, the area of the actual room will typically be smaller than the product obtained by multiplying the stated length times width. All dimensions are approximate and may vary with actual construction, and all floor plans and development plans are subject to change.