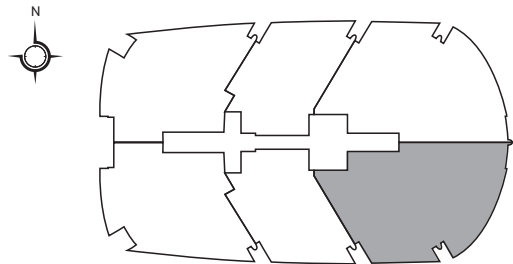
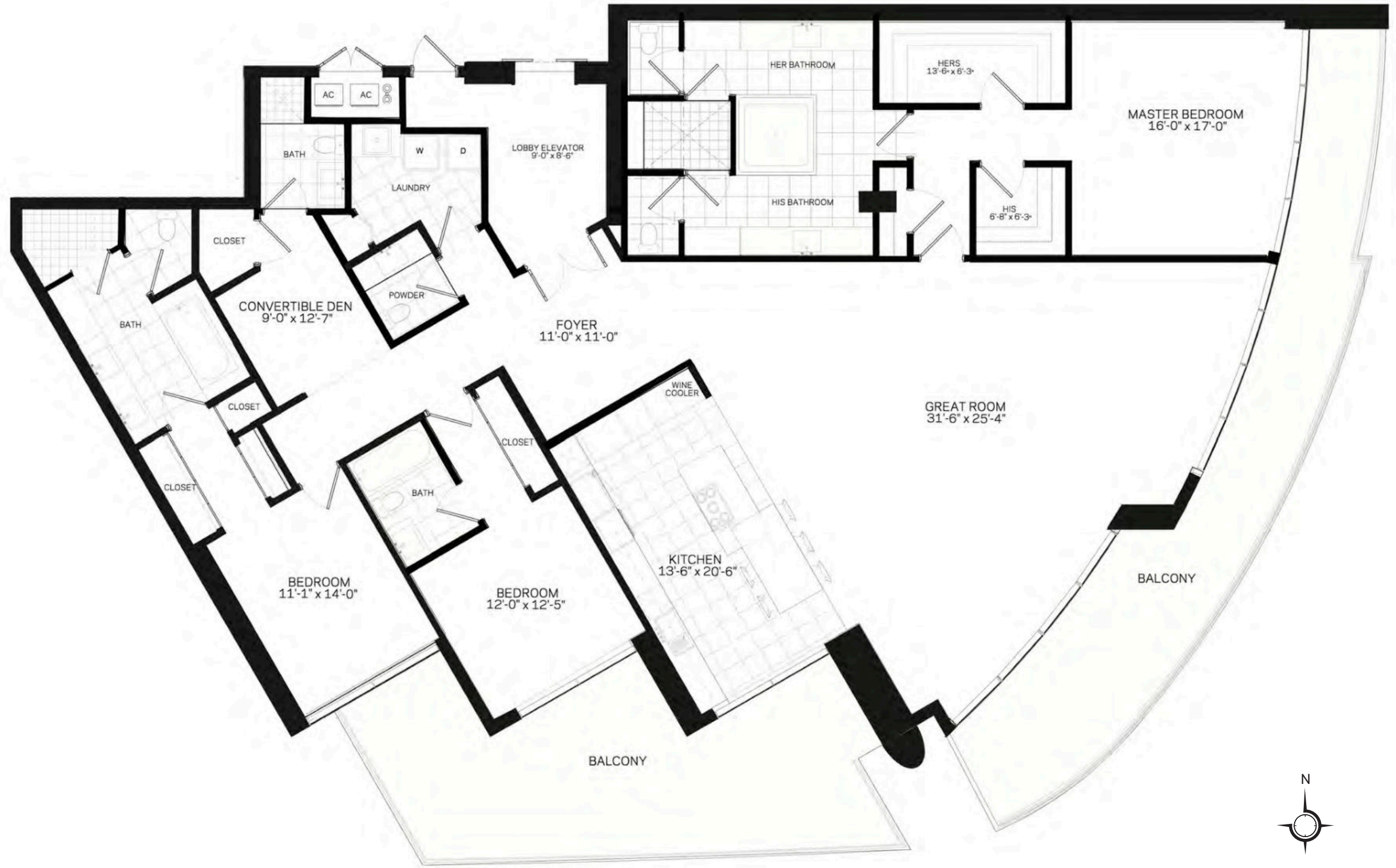


**P**  
**PARAMOUNT**  
 RESIDENCES  
 FORT LAUDERDALE BEACH

**UNIT A1**

4 Bedroom | 4.5 Bath

Interior Area	3,474 sq ft	323.74 m <sup>2</sup>
Balcony Area	891 sq ft	82.77 m <sup>2</sup>
<b>Total</b>	<b>4,365 sq ft</b>	<b>405.51 m<sup>2</sup></b>



Stated dimensions are measured to the exterior boundaries of the exterior walls and the centerline of interior demising walls and in fact vary from the dimensions that would be determined by using the description and definition of the "Unit" set forth in the Declaration (which generally only includes the interior airspace between the perimeter walls and excludes interior structural components). Note that measurements of rooms set forth on this floor plan are generally taken at the greatest points of each given room (as if the room were a perfect rectangle), without regard for any cutouts. Accordingly, the area of the actual room will typically be smaller than the product obtained by multiplying the stated length times width. All dimensions are approximate and may vary with actual construction, and all floor plans and development plans are subject to change.



# PARAMOUNT

FORT LAUDERDALE BEACH

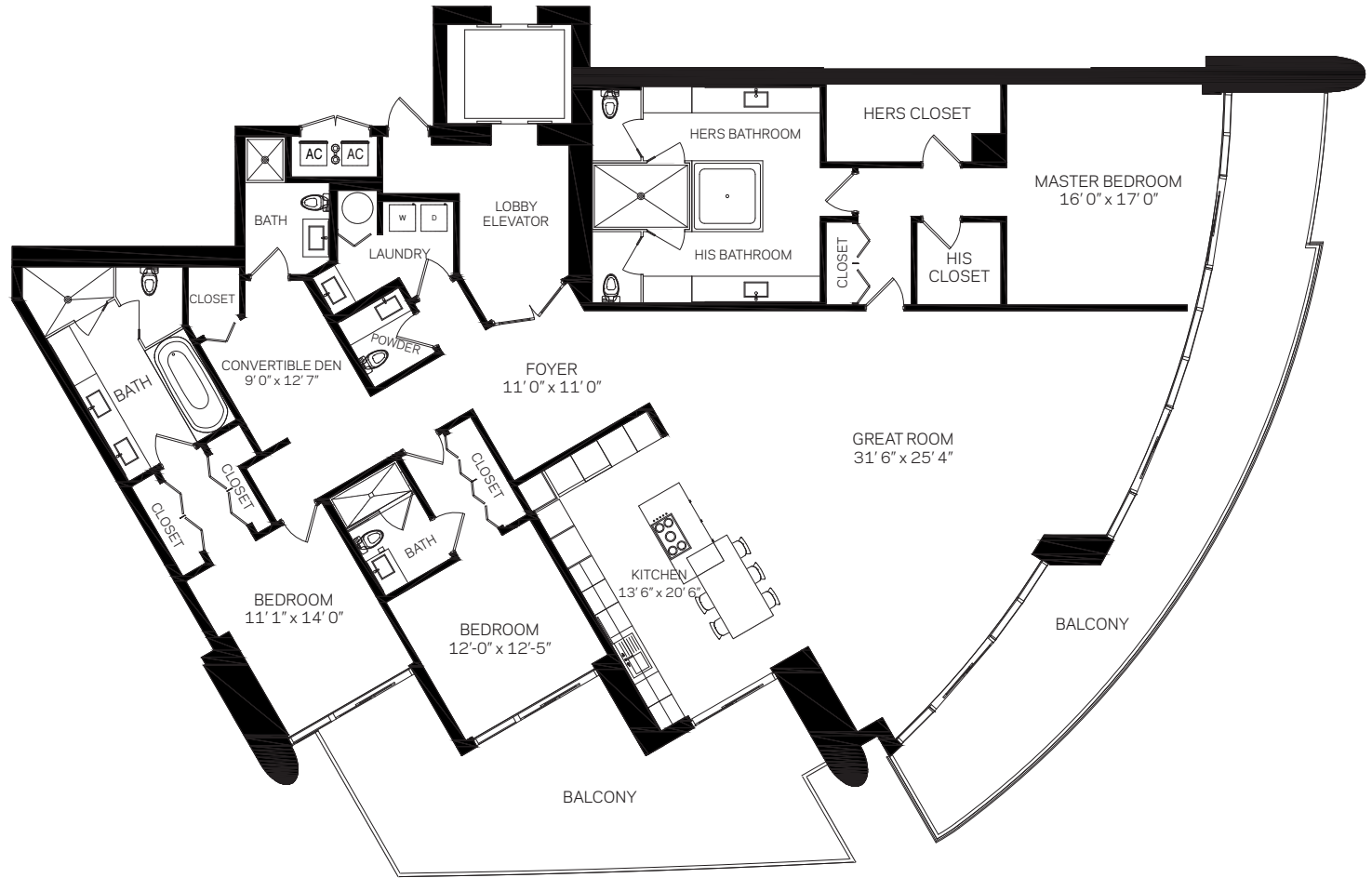
## Residence A1

4 Bed / 4.5 Bath

INTERIOR AREA 3,474 sq. ft. | 323 m<sup>2</sup>

TERRACE AREA 891 sq. ft. | 83 m<sup>2</sup>

TOTAL AREA 4,365 sq. ft. | 406 m<sup>2</sup>



These drawings are conceptual only and are for the convenience of reference. They should not be relied upon as representations, express or implied, of the final detail of the residences. Units shown are examples of unit types and may not depict actual units. Stated square footages are ranges for a particular unit type and are measured to the exterior boundaries of the exterior walls and the centerline of interior demising walls and in fact vary from the area that would be determined by using the description and definition of the "Unit" set forth in the Declaration (which generally only includes the interior airspace between the perimeter walls and excludes interior structural components).



# PARAMOUNT

RESIDENCES  
FORT LAUDERDALE BEACH

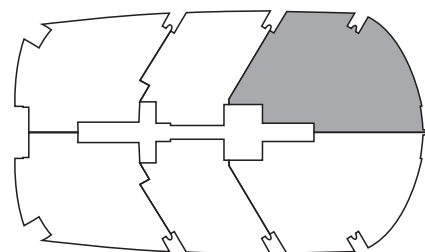
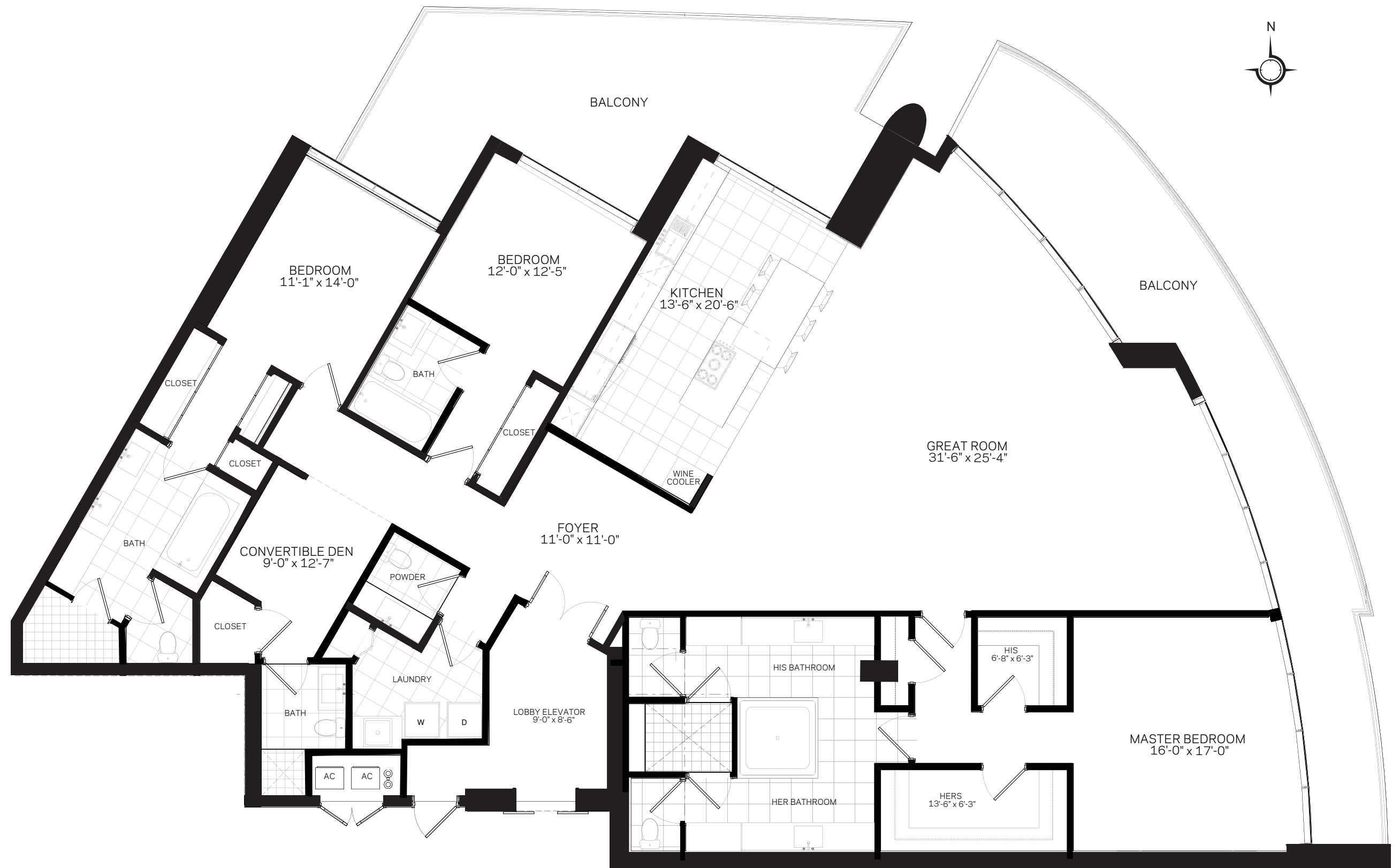
## UNIT A2

4 Bedroom | 4.5 Bath

Interior Area 3,474 sq ft 323.74 m<sup>2</sup>

Balcony Area 891 sq ft 82.77 m<sup>2</sup>

Total 4,365 sq ft 405.51 m<sup>2</sup>



ATLANTIC OCEAN

SALES & MARKETING BY  
**ONWORLD**  
PROPERTIES



Stated dimensions are measured to the exterior boundaries of the exterior walls and the centerline of interior demising walls and in fact vary from the dimensions that would be determined by using the description and definition of the "Unit" set forth in the Declaration (which generally only includes the interior airspace between the perimeter walls and excludes interior structural components). Note that measurements of rooms set forth on this floor plan are generally taken at the greatest points of each given room (as if the room were a perfect rectangle), without regard for any cutouts. Accordingly, the area of the actual room will typically be smaller than the product obtained by multiplying the stated length times width. All dimensions are approximate and may vary with actual construction, and all floor plans and development plans are subject to change.



# PARAMOUNT

FORT LAUDERDALE BEACH

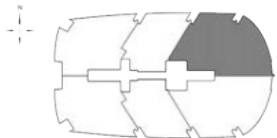
## Residence A2

4 Bed / 4.5 Bath

INTERIOR AREA 3,474 sq. ft. | 323 m<sup>2</sup>

TERRACE AREA 891 sq. ft. | 83 m<sup>2</sup>

TOTAL AREA 4,365 sq. ft. | 406 m<sup>2</sup>



ATLANTIC OCEAN



These drawings are conceptual only and are for the convenience of reference. They should not be relied upon as representations, express or implied, of the final detail of the residences. Units shown are examples of unit types and may not depict actual units. Stated square footages are ranges for a particular unit type and are measured to the exterior boundaries of the exterior walls and the centerline of interior demising walls and in fact vary from the area that would be determined by using the description and definition of the "Unit" set forth in the Declaration (which generally only includes the interior airspace between the perimeter walls and excludes interior structural components).



# PARAMOUNT

RESIDENCES  
FORT LAUDERDALE BEACH

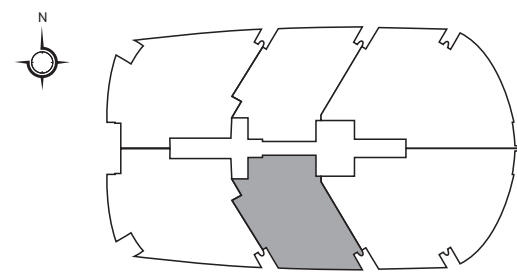
## UNIT B1

2 Bedroom | 2.5 Bath

Interior Area 1,910 sq ft 177.44 m<sup>2</sup>

Balcony Area 545 sq ft 50.63 m<sup>2</sup>

Total 2,455 sq ft 228.07 m<sup>2</sup>



ATLANTIC OCEAN

SALES & MARKETING BY  
**ONEWORLD**  
PROPERTIES

Stated dimensions are measured to the exterior boundaries of the exterior walls and the centerline of interior demising walls and in fact vary from the dimensions that would be determined by using the description and definition of the "Unit" set forth in the Declaration (which generally only includes the interior airspace between the perimeter walls and excludes interior structural components). Note that measurements of rooms set forth on this floor plan are generally taken at the greatest points of each given room (as if the room were a perfect rectangle), without regard for any cutouts. Accordingly, the area of the actual room will typically be smaller than the product obtained by multiplying the stated length times width. All dimensions are approximate and may vary with actual construction, and all floor plans and development plans are subject to change.



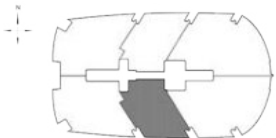
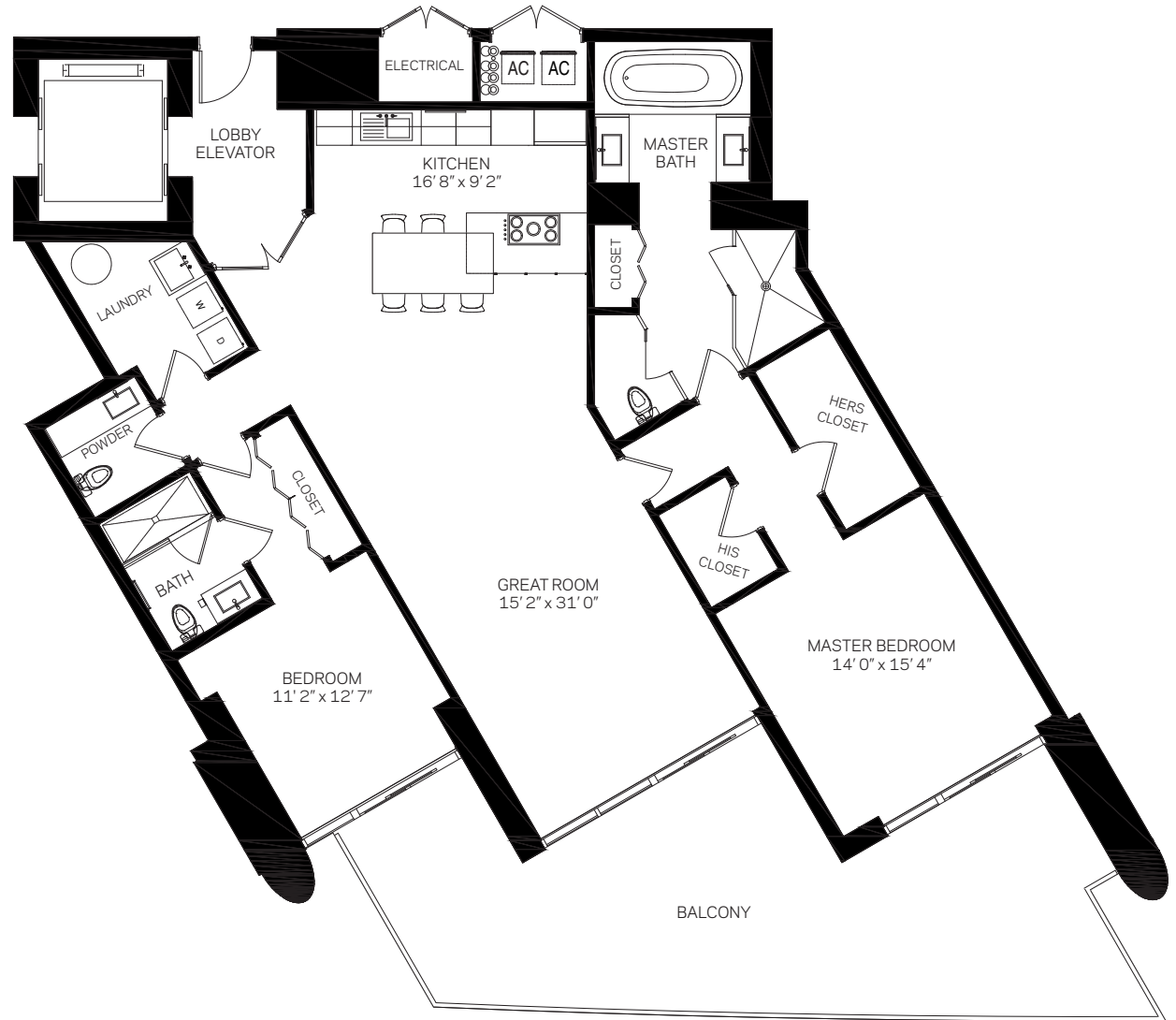
# PARAMOUNT

FORT LAUDERDALE BEACH

## Residence B1

2 Bed / 2.5 Bath

INTERIOR AREA	1,910 sq. ft.   177 m <sup>2</sup>
TERRACE AREA	545 sq. ft.   51 m <sup>2</sup>
<hr/>	
TOTAL AREA	2,455 sq. ft.   228 m <sup>2</sup>



ATLANTIC OCEAN



These drawings are conceptual only and are for the convenience of reference. They should not be relied upon as representations, express or implied, of the final detail of the residences. Units shown are examples of unit types and may not depict actual units. Stated square footages are ranges for a particular unit type and are measured to the exterior boundaries of the exterior walls and the centerline of interior demising walls and in fact vary from the area that would be determined by using the description and definition of the "Unit" set forth in the Declaration (which generally only includes the interior airspace between the perimeter walls and excludes interior structural components).



# PARAMOUNT

RESIDENCES  
FORT LAUDERDALE BEACH

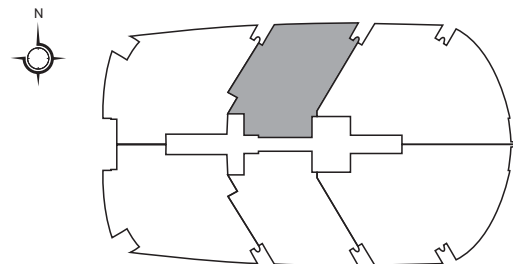
## UNIT B2

2 Bedroom | 2.5 Bath

Interior Area 1,910 sq ft 177.44 m<sup>2</sup>

Balcony Area 545 sq ft 50.63 m<sup>2</sup>

Total 2,455 sq ft 228.07 m<sup>2</sup>



SALES & MARKETING BY  
**ONWORLD**  
PROPERTIES



Stated dimensions are measured to the exterior boundaries of the exterior walls and the centerline of interior demising walls and in fact vary from the dimensions that would be determined by using the description and definition of the "Unit" set forth in the Declaration (which generally only includes the interior airspace between the perimeter walls and excludes interior structural components). Note that measurements of rooms set forth on this floor plan are generally taken at the greatest points of each given room (as if the room were a perfect rectangle), without regard for any cutouts. Accordingly, the area of the actual room will typically be smaller than the product obtained by multiplying the stated length times width. All dimensions are approximate and may vary with actual construction, and all floor plans and development plans are subject to change.



# PARAMOUNT

FORT LAUDERDALE BEACH

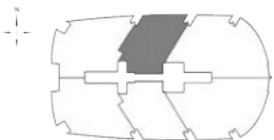
## Residence B2

2 Bed / 2.5 Bath

INTERIOR AREA 1,910 sq. ft. | 177 m<sup>2</sup>

TERRACE AREA 545 sq. ft. | 51 m<sup>2</sup>

TOTAL AREA 2,455 sq. ft. | 228 m<sup>2</sup>



ATLANTIC OCEAN



These drawings are conceptual only and are for the convenience of reference. They should not be relied upon as representations, express or implied, of the final detail of the residences. Units shown are examples of unit types and may not depict actual units. Stated square footages are ranges for a particular unit type and are measured to the exterior boundaries of the exterior walls and the centerline of interior demising walls and in fact vary from the area that would be determined by using the description and definition of the "Unit" set forth in the Declaration (which generally only includes the interior airspace between the perimeter walls and excludes interior structural components).





# PARAMOUNT

FORT LAUDERDALE BEACH

Residence C1  
3 Bed / 3.5 Bath

*Interior Area* 2,626 sq. ft.  
*Terrace Area* 732 sq. ft.

---

*Total Area* 3,358 sq. ft.



ATLANTIC OCEAN



These drawings are conceptual only and are for the convenience of reference. They should not be relied upon as representations, express or implied, of the final detail of the residences. Units shown are examples of unit types and may not depict actual units. Stated square footages are ranges for a particular unit type and are measured to the exterior boundaries of the exterior walls and the centerline of interior demising walls and in fact vary from the area that would be determined by using the description and definition of the "Unit" set forth in the Declaration (which generally only includes the interior airspace between the perimeter walls and excludes interior structural components).



# PARAMOUNT

FORT LAUDERDALE BEACH

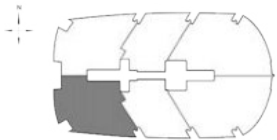
## Residence C1

3 Bed / 3.5 Bath

INTERIOR AREA 2,626 sq. ft. | 244 m<sup>2</sup>

TERRACE AREA 732 sq. ft. | 68 m<sup>2</sup>

TOTAL AREA 3,358 sq. ft. | 312 m<sup>2</sup>



ATLANTIC OCEAN



These drawings are conceptual only and are for the convenience of reference. They should not be relied upon as representations, express or implied, of the final detail of the residences. Units shown are examples of unit types and may not depict actual units. Stated square footages are ranges for a particular unit type and are measured to the exterior boundaries of the exterior walls and the centerline of interior demising walls and in fact vary from the area that would be determined by using the description and definition of the "Unit" set forth in the Declaration (which generally only includes the interior airspace between the perimeter walls and excludes interior structural components).



# PARAMOUNT

FORT LAUDERDALE BEACH

## Residence C2

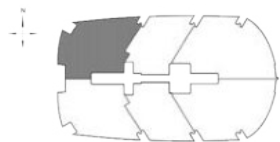
3 Bed / 3.5 Bath

*Interior Area* 2,626 sq. ft.

*Terrace Area* 732 sq. ft.

---

*Total Area* 3,358 sq. ft.



ATLANTIC OCEAN



These drawings are conceptual only and are for the convenience of reference. They should not be relied upon as representations, express or implied, of the final detail of the residences. Units shown are examples of unit types and may not depict actual units. Stated square footages are ranges for a particular unit type and are measured to the exterior boundaries of the exterior walls and the centerline of interior demising walls and in fact vary from the area that would be determined by using the description and definition of the "Unit" set forth in the Declaration (which generally only includes the interior airspace between the perimeter walls and excludes interior structural components).



# PARAMOUNT

FORT LAUDERDALE BEACH

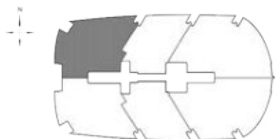
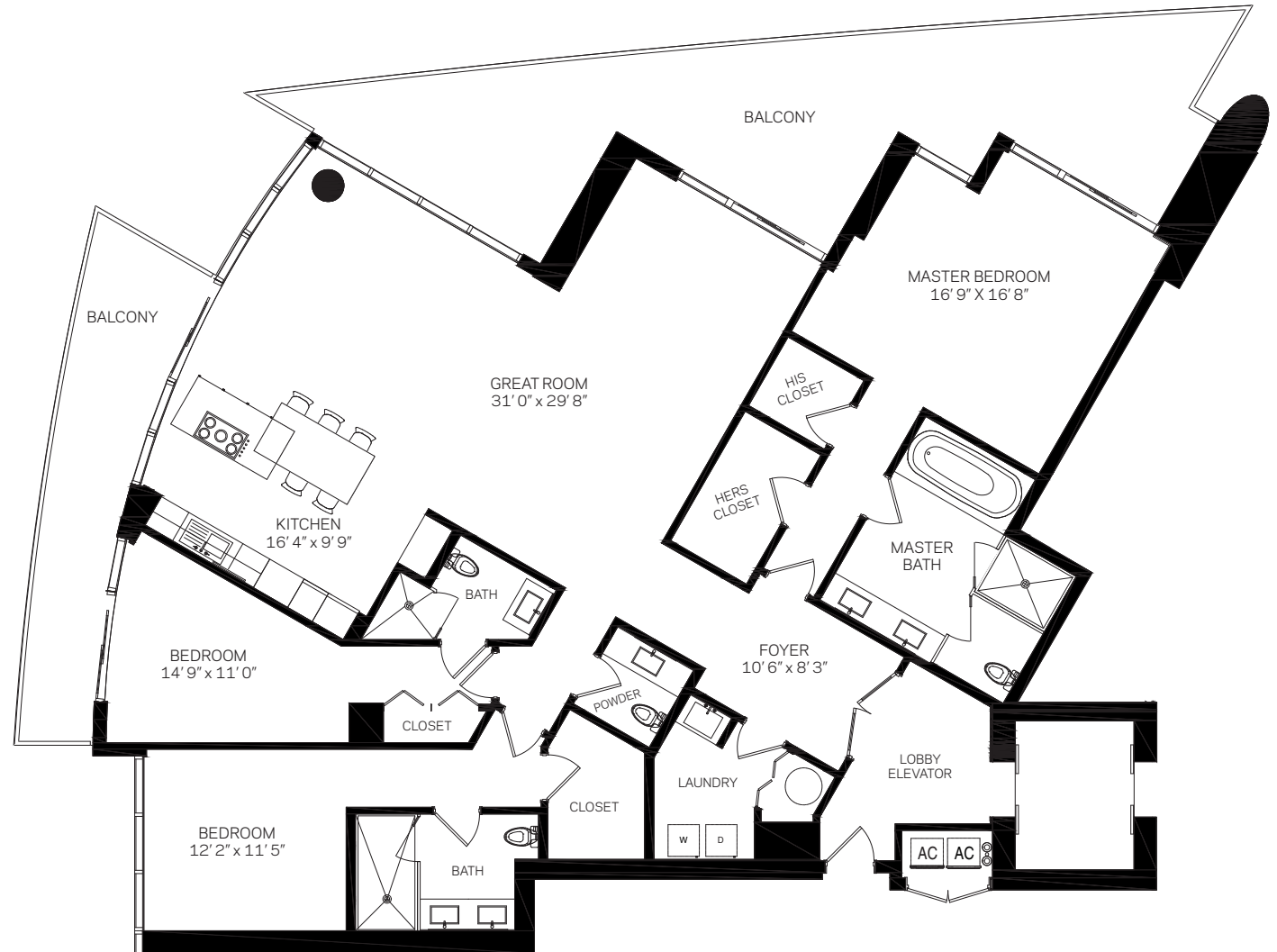
## Residence C2

3 Bed / 3.5 Bath

INTERIOR AREA 2,626 sq. ft. | 244 m<sup>2</sup>

TERRACE AREA 732 sq. ft. | 68 m<sup>2</sup>

TOTAL AREA 3,358 sq. ft. | 312 m<sup>2</sup>



ATLANTIC OCEAN



These drawings are conceptual only and are for the convenience of reference. They should not be relied upon as representations, express or implied, of the final detail of the residences. Units shown are examples of unit types and may not depict actual units. Stated square footages are ranges for a particular unit type and are measured to the exterior boundaries of the exterior walls and the centerline of interior demising walls and in fact vary from the area that would be determined by using the description and definition of the "Unit" set forth in the Declaration (which generally only includes the interior airspace between the perimeter walls and excludes interior structural components).



**PARAMOUNT**  
FORT LAUDERDALE BEACH

**Townhouse 1**  
3 Bed / 4.5 Bath

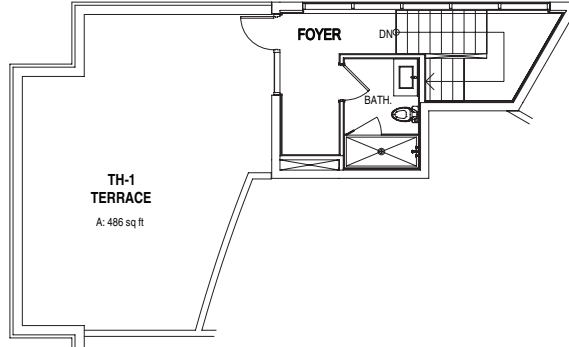
Total Interior Area 2,429 sq. ft.  
Total Terrace Area 756 sq. ft.

Total Area 3,185 sq. ft.

Third Level

Interior Area 141 sq. ft.  
Terrace Area 486 sq. ft.

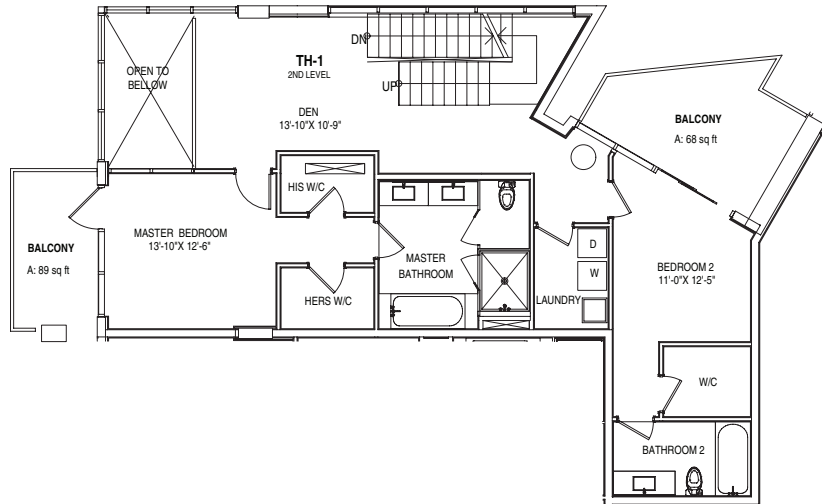
Area 627 sq. ft.



Second Level

Interior Area 1,127 sq. ft.  
Terrace Area 157 sq. ft.

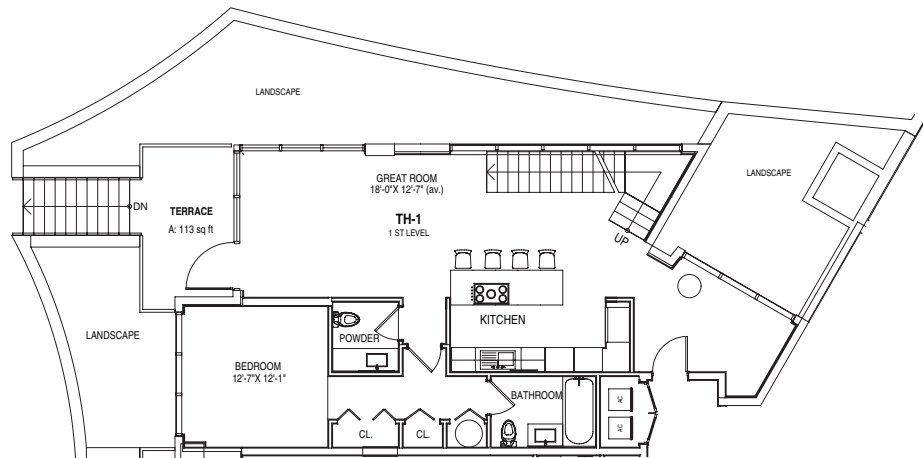
Area 1,284 sq. ft.



First Level

Interior Area 1,161 sq. ft.  
Terrace Area 113 sq. ft.

Area 1,274 sq. ft.



These drawings are conceptual only and are for the convenience of reference. They should not be relied upon as representations, express or implied, of the final detail of the residences. Units shown are examples of unit types and may not depict actual units. Stated square footages are ranges for a particular unit type and are measured to the exterior boundaries of the exterior walls and the centerline of interior demising walls and in fact vary from the area that would be determined by using the description and definition of the "Unit" set forth in the Declaration (which generally only includes the interior airspace between the perimeter walls and excludes interior structural components).



**PARAMOUNT**  
FORT LAUDERDALE BEACH

**Townhouse 4**  
3 Bed / 4.5 Bath

*Total Interior Area* 2,262 sq. ft.  
*Total Terrace Area* 620 sq. ft.

---

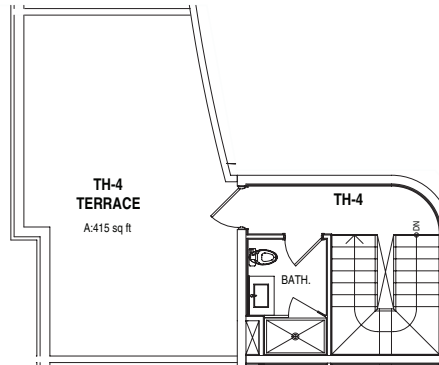
*Total Area* 2,882 sq. ft.

Third Level

*Interior Area* 143 sq. ft.  
*Terrace Area* 415 sq. ft.

---

*Area* 558 sq. ft.

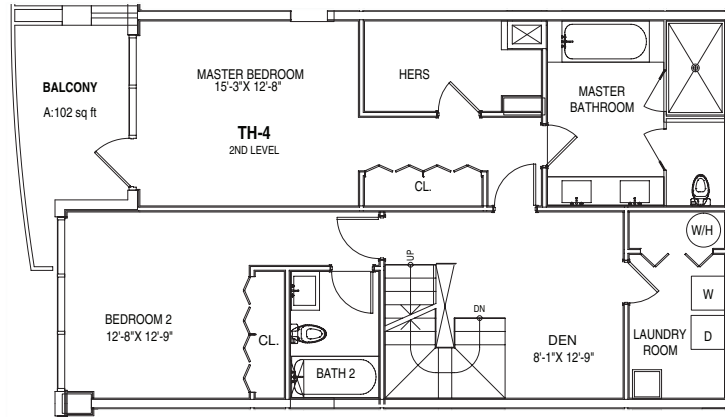


Second Level

*Interior Area* 1,107 sq. ft.  
*Terrace Area* 102 sq. ft.

---

*Area* 1,209 sq. ft.

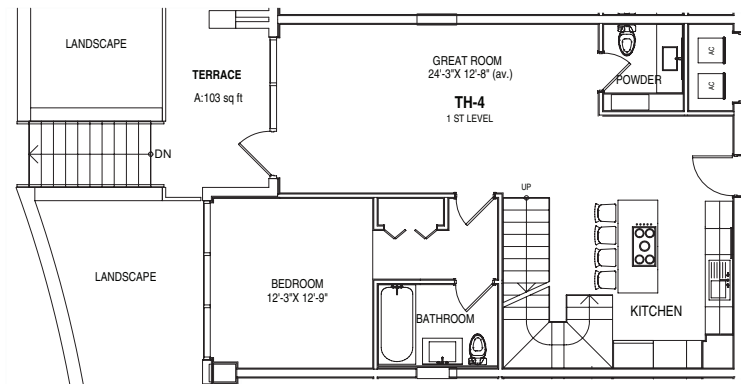


First Level

*Interior Area* 1,012 sq. ft.  
*Terrace Area* 103 sq. ft.

---

*Area* 1,115 sq. ft.



These drawings are conceptual only and are for the convenience of reference. They should not be relied upon as representations, express or implied, of the final detail of the residences. Units shown are examples of unit types and may not depict actual units. Stated square footages are ranges for a particular unit type and are measured to the exterior boundaries of the exterior walls and the centerline of interior demising walls and in fact vary from the area that would be determined by using the description and definition of the "Unit" set forth in the Declaration (which generally only includes the interior airspace between the perimeter walls and excludes interior structural components).