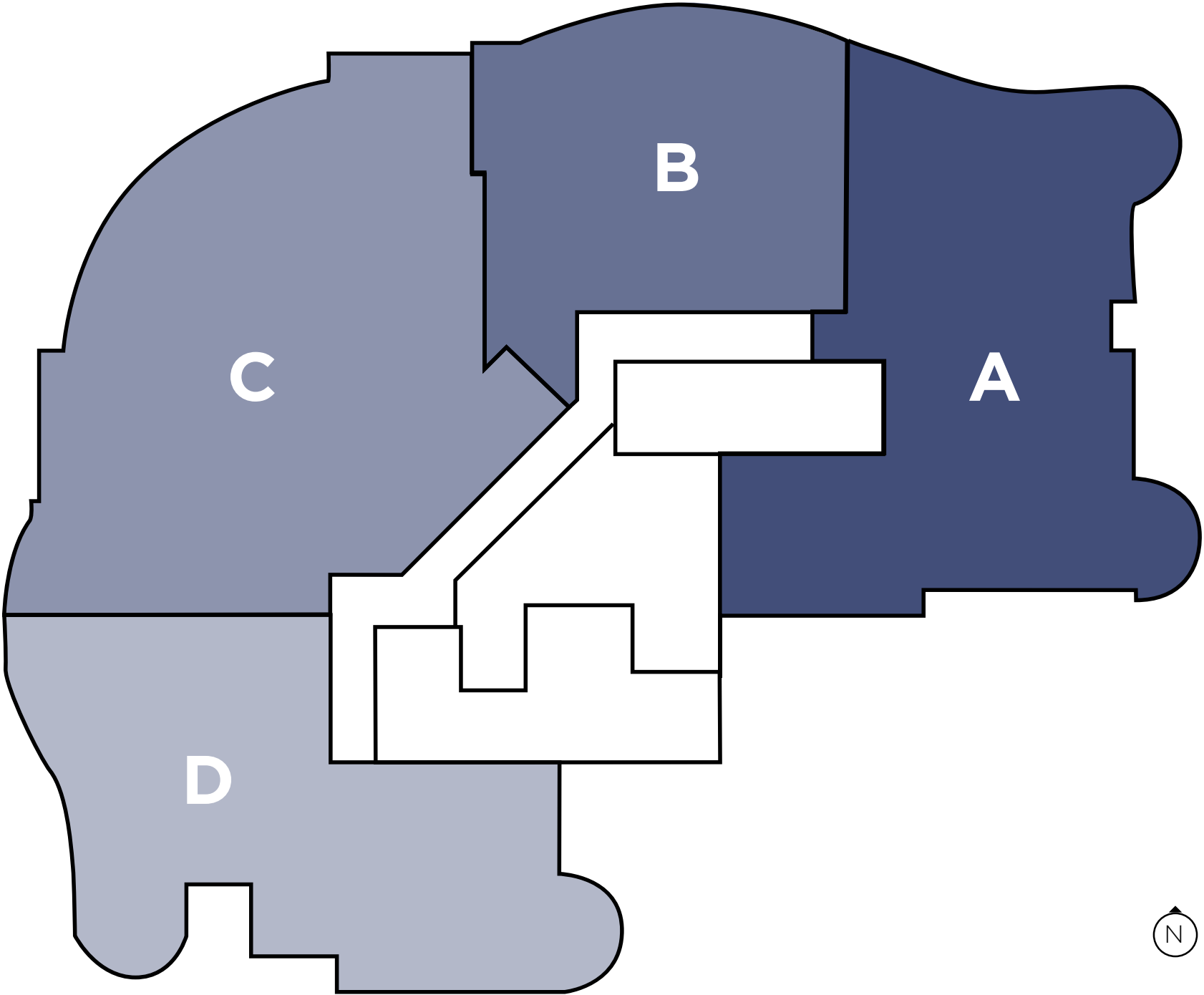




RESIDENCES

—Levels 17-44

EAST LAS OLAS BLVD



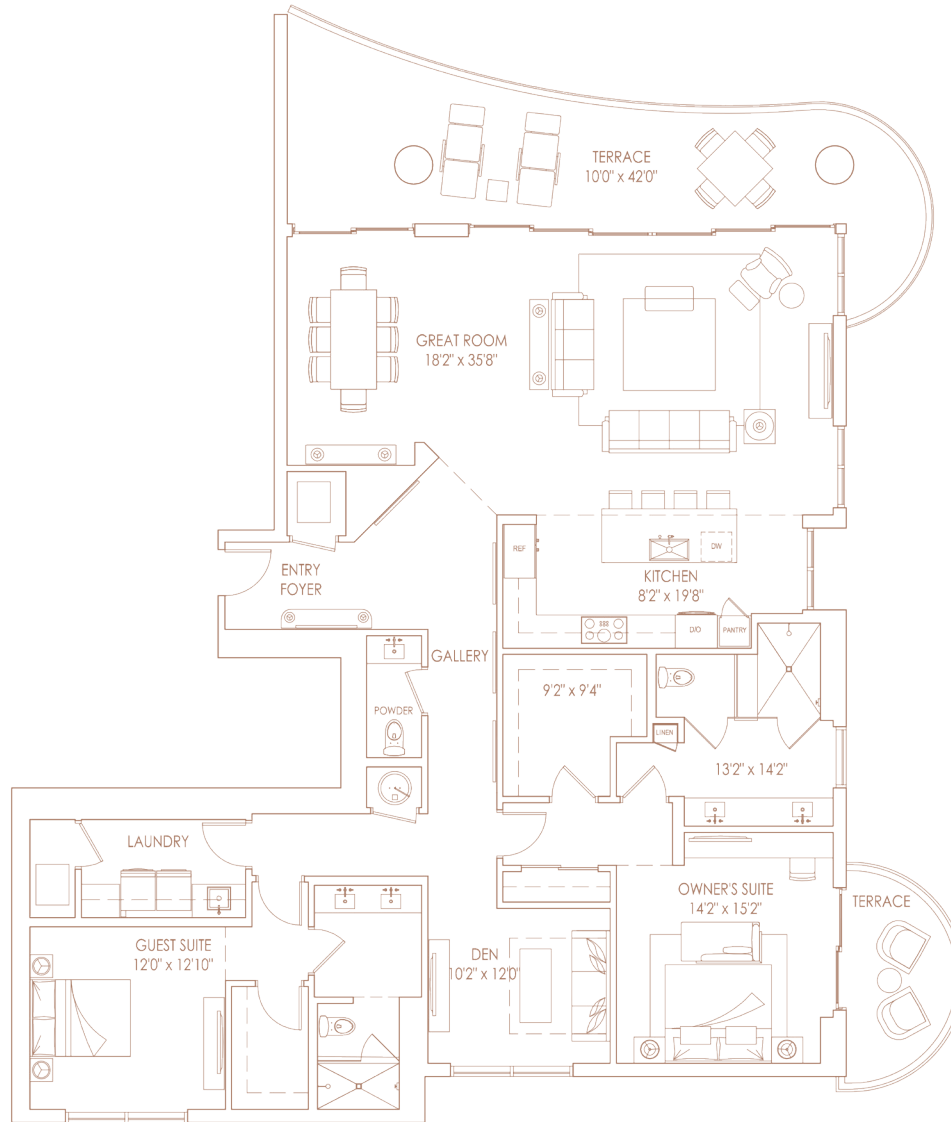
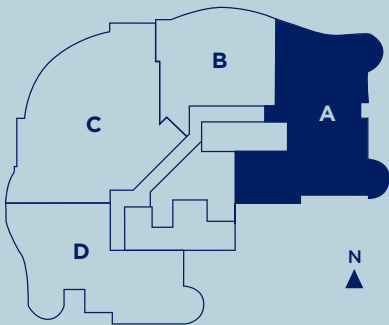
RESIDENCE A

2 BEDROOMS | DEN | 2.5 BATHROOMS

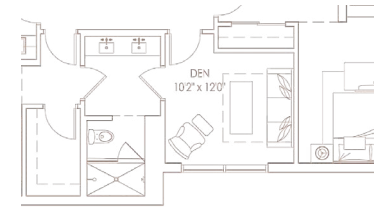
Interior	2,395 sq. ft.	222.50 m ²
Exterior	500 sq. ft.	46.45 m ²
Total	2,895 sq. ft.	268.95 m²

100
Las Olas

East Las Olas Boulevard



OPTION FOR ENCLOSED DEN



200 E Las Olas Boulevard, Suite 150
Fort Lauderdale, FL 33301
T. 954.800.6263
www.OneHundredLasOlas.com

KOLTER



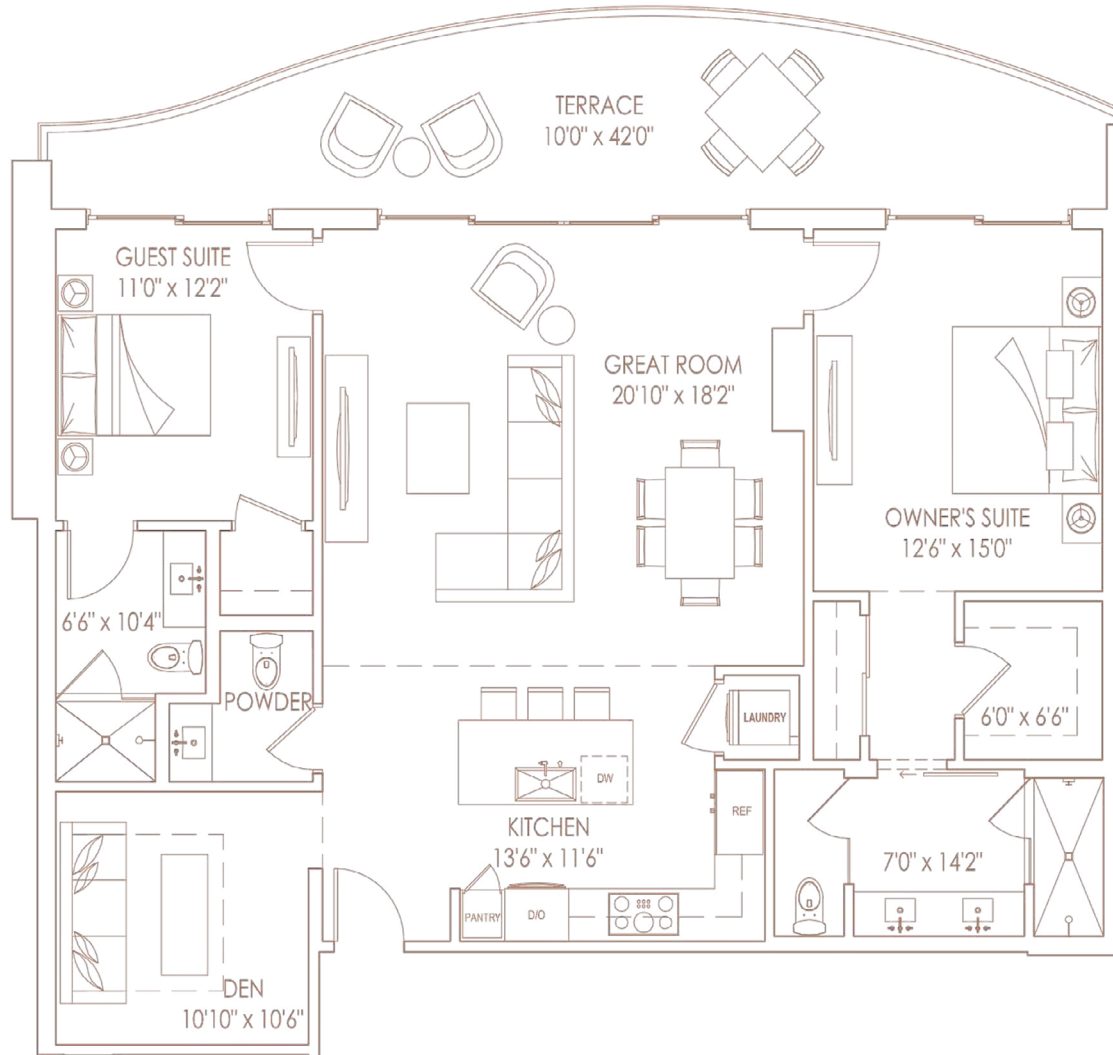
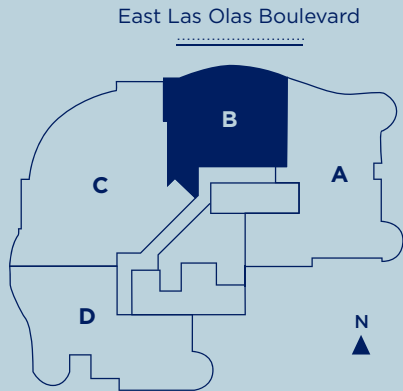
ORAL REPRESENTATIONS CANNOT BE RELIED UPON AS CORRECTLY STATING REPRESENTATIONS OF THE SELLER. FOR CORRECT REPRESENTATIONS, MAKE REFERENCE TO THIS BROCHURE AND TO THE DOCUMENTS REQUIRED BY SECTION 718.503, FLORIDA STATUTES, TO BE FURNISHED BY A SELLER TO A BUYER OR LESSEE. This project has been filed in the state of Florida and no other state. This is not an offer to sell or solicitation of offers to buy the condominium units in states where such offer or solicitation cannot be made. Prices and availability are subject to change at any time without notice. All dimensions shown are approximate. The seller reserves the right, in its sole judgment and discretion, to modify the floorplans, substitute appliances, materials, fixtures and equipment of equal or greater quality or value, for those specified. The total condominium square footages as shown in this brochure are based on the "Architectural Method" of calculation which measures the exterior perimeter of the condominium unit, and also includes interior columns and 50% of demising walls. The method for calculating residential square footage in the condominium documents is different. Please see the Declaration of Condominium for more information.

ONEWORLD
PROPERTIES

RESIDENCE B

2 BEDROOMS | DEN | 2.5 BATHROOMS

Interior	1,501 sq. ft.	139.45 m ²
Exterior	310 sq. ft.	28.80 m ²
Total	1,811 sq. ft.	168.25 m²



100
Las Olas

200 E Las Olas Boulevard, Suite 150
Fort Lauderdale, FL 33301
T. 954.800.6263
www.OneHundredLasOlas.com

KOLTER



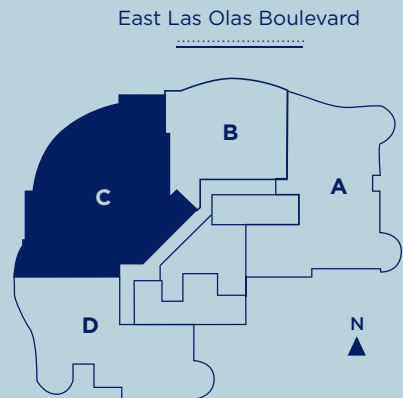
ORAL REPRESENTATIONS CANNOT BE RELIED UPON AS CORRECTLY STATING REPRESENTATIONS OF THE SELLER. FOR CORRECT REPRESENTATIONS, MAKE REFERENCE TO THIS BROCHURE AND TO THE DOCUMENTS REQUIRED BY SECTION 718.503, FLORIDA STATUTES. TO BE FURNISHED BY A SELLER TO A BUYER OR LESSEE. This project has been filed in the state of Florida and no other state. This is not an offer to sell or solicitation of offers to buy the condominium units in states where such offer or solicitation cannot be made. Prices and availability are subject to change at any time without notice. All dimensions shown are approximate. The seller reserves the right, in its sole judgment and discretion, to modify the floorplans, substitute appliances, materials, fixtures and equipment of equal or greater quality or value, for those specified. The total condominium square footages as shown in this brochure are based on the "Architectural Method" of calculation which measures the exterior perimeter of the condominium unit, and also includes interior columns and 50% of demising walls. The method for calculating residential square footage in the condominium documents is different. Please see the Declaration of Condominium for more information.

ONEWORLD
PROPERTIES

RESIDENCE C

3 BEDROOMS | DEN | 3.5 BATHROOMS

Interior	2,964 sq. ft.	275.40 m ²
Exterior	558 sq. ft.	51.80 m ²
Total	3,522 sq. ft.	379.00 m²



100
Las Olas

200 E Las Olas Boulevard, Suite 150
Fort Lauderdale, FL 33301
T. 954.800.6263
www.OneHundredLasOlas.com

KOLTER



ORAL REPRESENTATIONS CANNOT BE RELIED UPON AS CORRECTLY STATING REPRESENTATIONS OF THE SELLER. FOR CORRECT REPRESENTATIONS, MAKE REFERENCE TO THIS BROCHURE AND TO THE DOCUMENTS REQUIRED BY SECTION 718.503, FLORIDA STATUTES, TO BE FURNISHED BY A SELLER TO A BUYER OR LESSEE. This project has been filed in the state of Florida and no other state. This is not an offer to sell or solicitation of offers to buy the condominium units in states where such offer or solicitation cannot be made. Prices and availability are subject to change at any time without notice. All dimensions shown are approximate. The seller reserves the right, in its sole judgment and discretion, to modify the floorplans, substitute appliances, materials, fixtures and equipment of equal or greater quality or value, for those specified. The total condominium square footages as shown in this brochure are based on the "Architectural Method" of calculation which measures the exterior perimeter of the condominium unit, and also includes interior columns and 50% of demising walls. The method for calculating residential square footage in the condominium documents is different. Please see the Declaration of Condominium for more information.

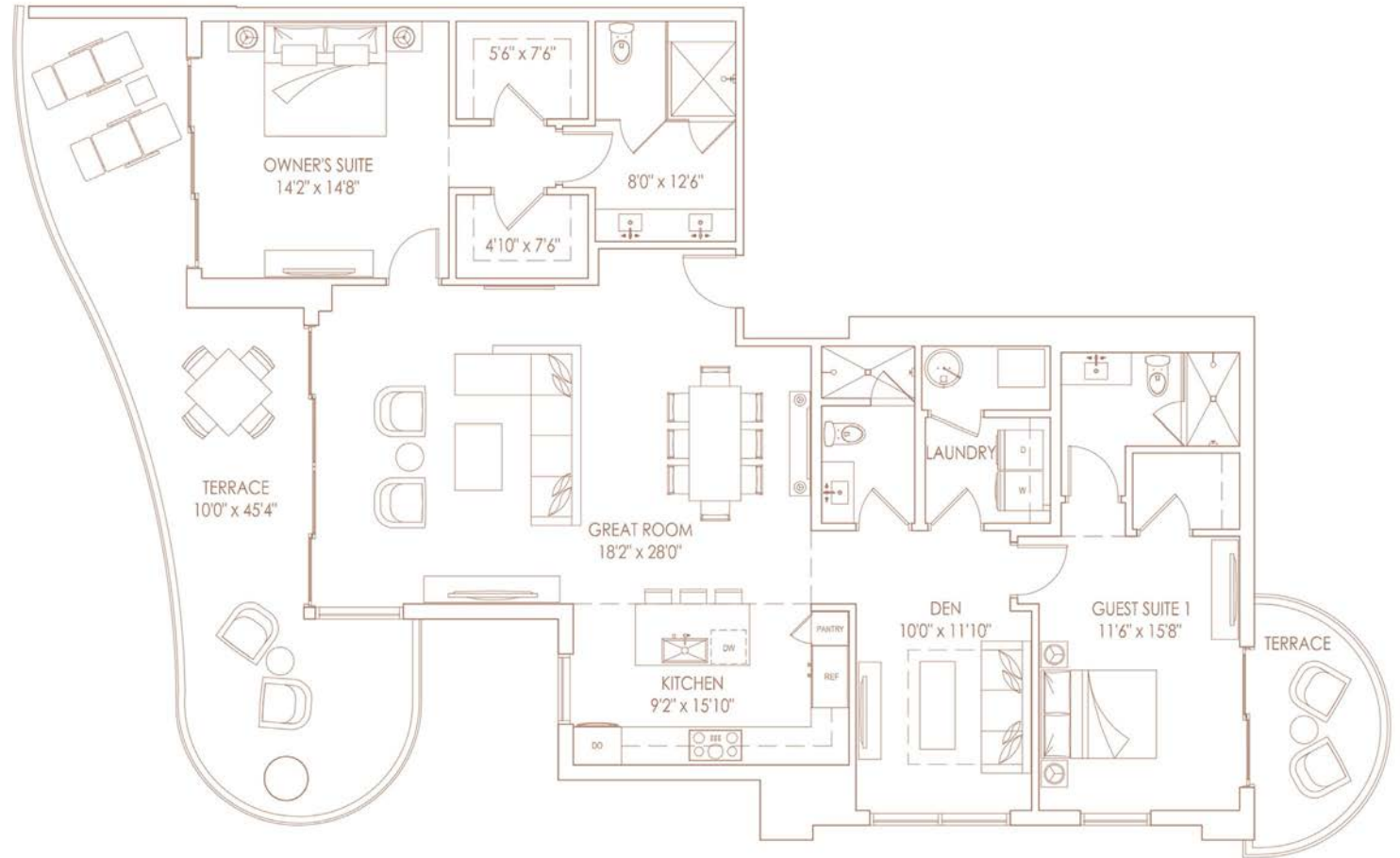
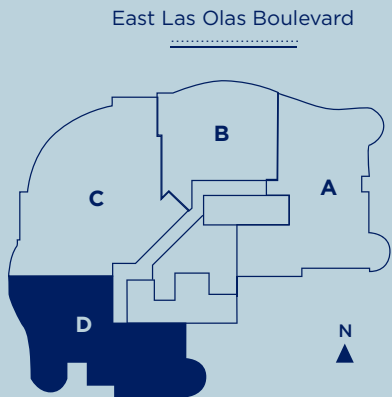
ONEWORLD
PROPERTIES

RESIDENCE D

2 BEDROOMS | DEN | 3 BATHROOMS

Interior	1,867 sq. ft.	173.45 m ²
Exterior	544 sq. ft.	50.50 m ²
Total	2,411 sq. ft.	223.95 m²

100
Las Olas



200 E Las Olas Boulevard, Suite 150
Fort Lauderdale, FL 33301
T. 954.800.6263
www.OneHundredLasOlas.com

KOLTER



ORAL REPRESENTATIONS CANNOT BE RELIED UPON AS CORRECTLY STATING REPRESENTATIONS OF THE SELLER. FOR CORRECT REPRESENTATIONS, MAKE REFERENCE TO THIS BROCHURE AND TO THE DOCUMENTS REQUIRED BY SECTION 718.503, FLORIDA STATUTES, TO BE FURNISHED BY A SELLER TO A BUYER OR LESSEE. This project has been filed in the state of Florida and no other state. This is not an offer to sell or solicitation of offers to buy the condominium units in states where such offer or solicitation cannot be made. Prices and availability are subject to change at any time without notice. All dimensions shown are approximate. The seller reserves the right, in its sole judgment and discretion, to modify the floorplans, substitute appliances, materials, fixtures and equipment of equal or greater quality or value, for those specified. The total condominium square footages as shown in this brochure are based on the "Architectural Method" of calculation which measures the exterior perimeter of the condominium unit, and also includes interior columns and 50% of demising walls. The method for calculating residential square footage in the condominium documents is different. Please see the Declaration of Condominium for more information.

ONEWORLD
PROPERTIES