



HYDE™
SUITES & RESIDENCES
MIDTOWN MIAMI

Floor Plans

RESIDENCE 01

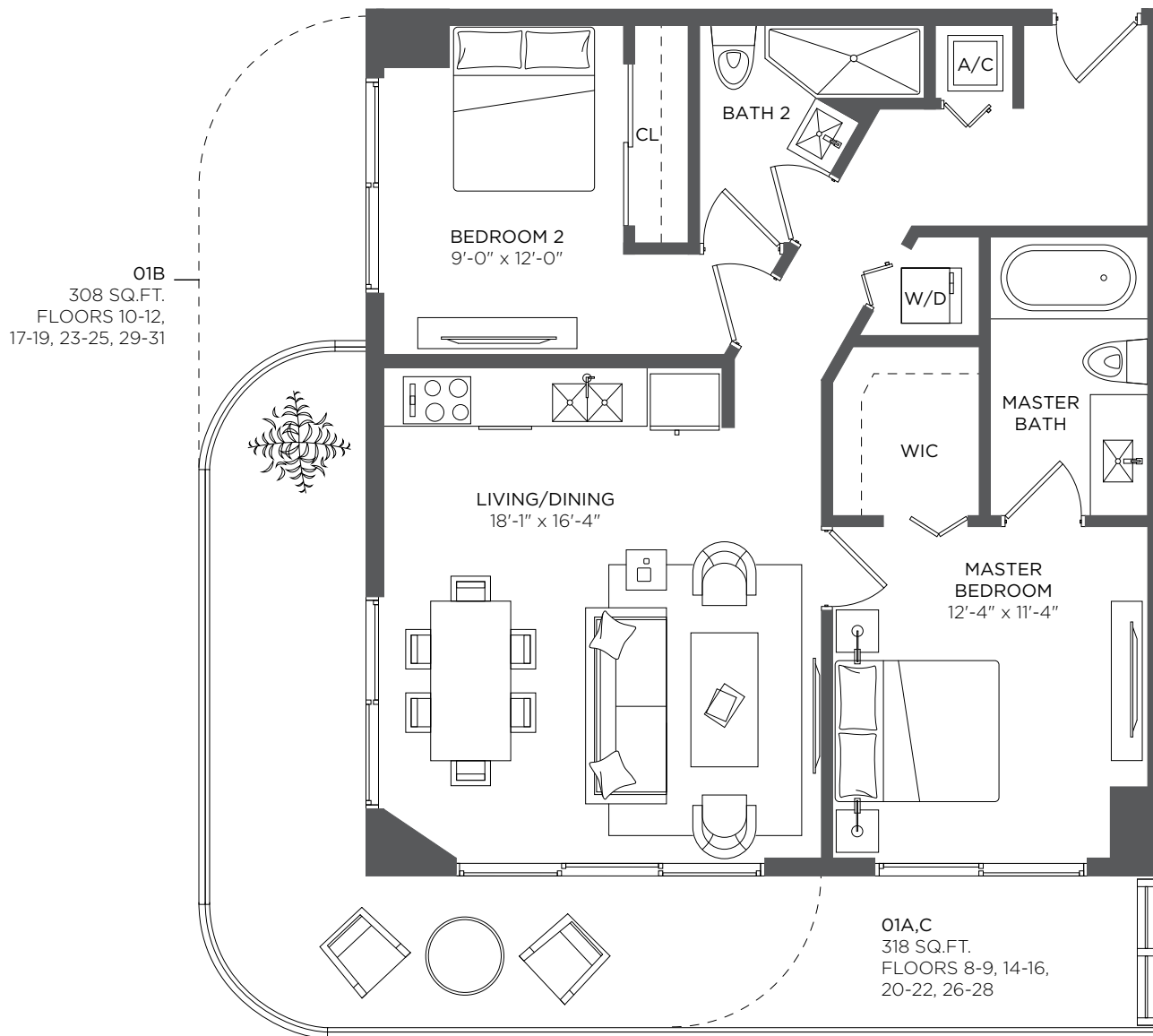
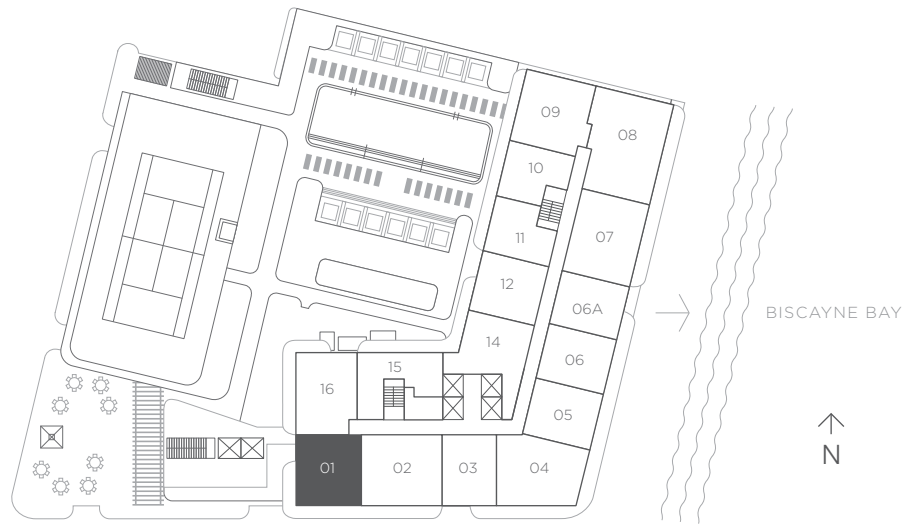
2 Bedrooms 2 Baths

A/C INTERIOR AREA 938 sq ft / 87.14 sq m

TERRACE AREA 318 sq ft / 29.54 sq m

TOTAL RESIDENCE 1,256 sq ft / 116.68 sq m

FLOORS 8 - 31



RESIDENCE 02

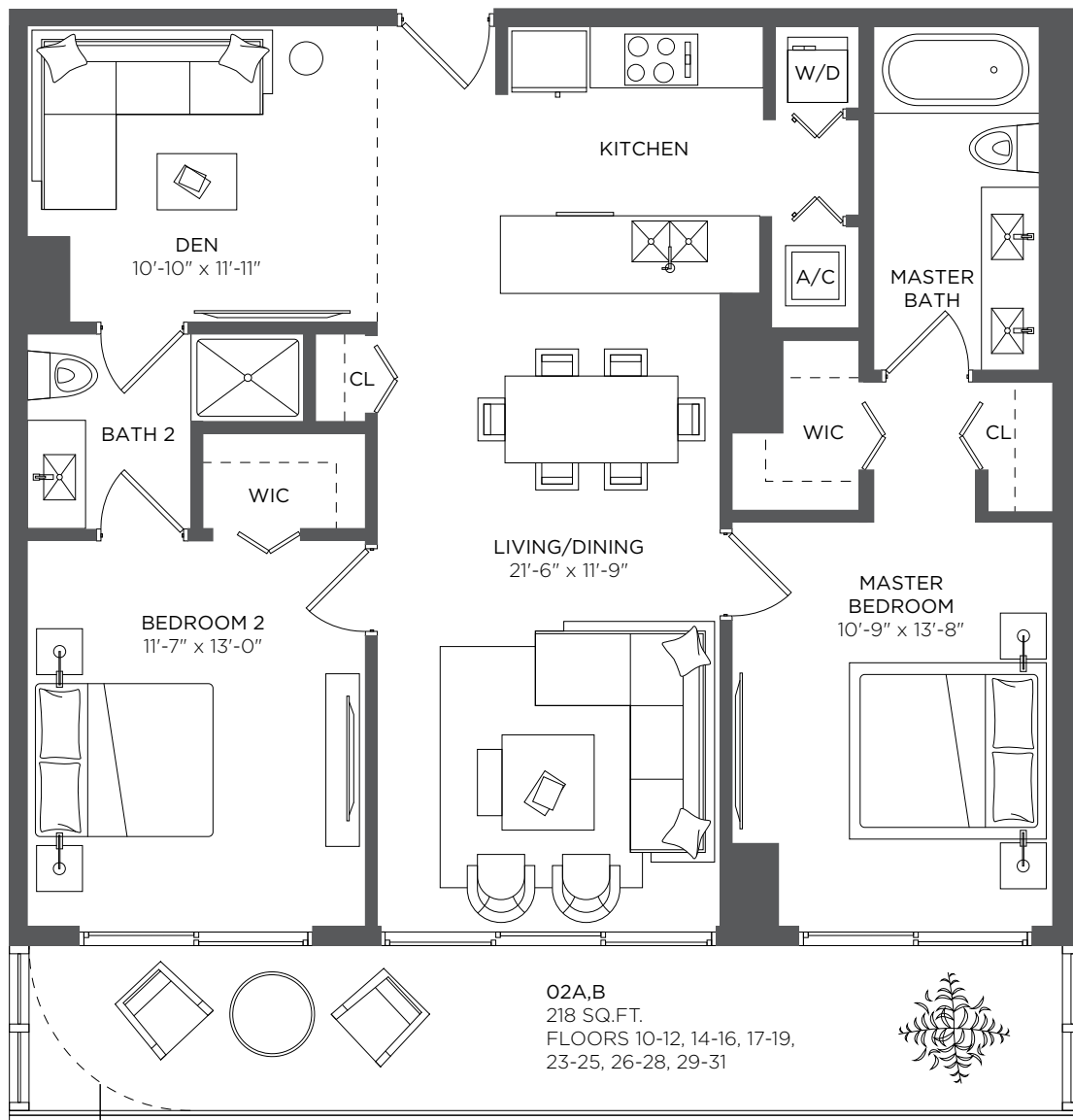
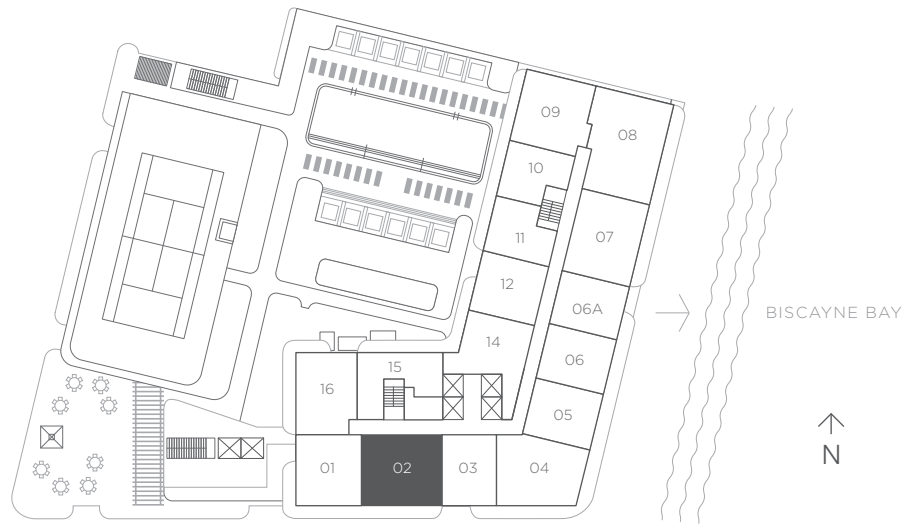
2 Bedrooms 2 Baths + Den

A/C INTERIOR AREA 1,171 sq ft / 108.78 sq m

TERRACE AREA 218 sq ft / 20.25 sq m

TOTAL RESIDENCE 1,389 sq ft / 129.03 sq m

FLOORS 8 - 31



02C
212 SQ.FT.
FLOORS 8-9, 20-22

There are various methods for calculating the square footage of a Unit and depending on the method of calculation, the quoted square footage of a Unit in advertising materials may vary from the square footage of a Unit as stated or described in the Prospectus and the Declaration. The dimensions in the Unit shown in these floor plans have been calculated from the exterior boundaries of the exterior walls to the centerline of interior demising walls, including common elements such as structural walls and other interior structural components of the building and in fact vary from the dimensions that would be determined by using the description and definition of the "Unit" set forth in the Prospectus and the Declaration. For your reference, the area of the Unit, determined in accordance with the Unit boundaries as defined in the Prospectus and the Declaration is 1041 sqft for units 802, 902, 1002, 1102, 1202, 1402, 1502, 1602, 1702, 1802, 1902, 2002, 2102, 2202, 2302, 2402, 2502, 2602, 2702, 2802, 2902, 3002 and 3102, which is less than the square footage reflected here. The measurements of room set forth on this floor plan are generally taken at the greatest points of each given room (as if the room were a perfect rectangle) without regard for any cutouts. Accordingly, the area of the actual room will typically smaller than the product obtained by multiplying the stated length times width. All dimensions are approximate and may vary with actual construction. All floor plans are subject to change. The furnishings and décor illustrated are not included with the purchase of the Unit. See Prospectus for information regarding what is offered with the Unit and the calculation of the Unit square footage and dimensions.

RESIDENCE 03

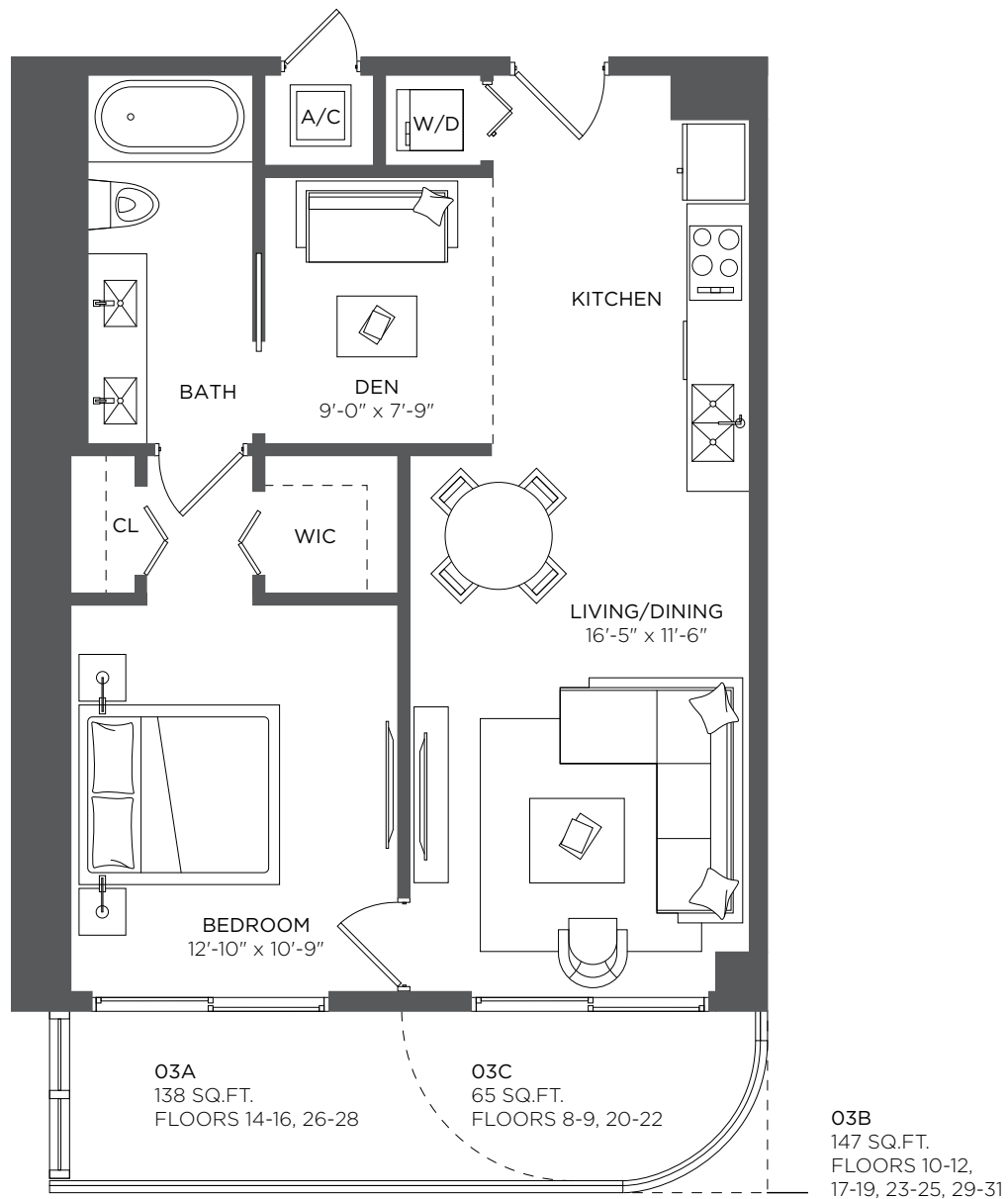
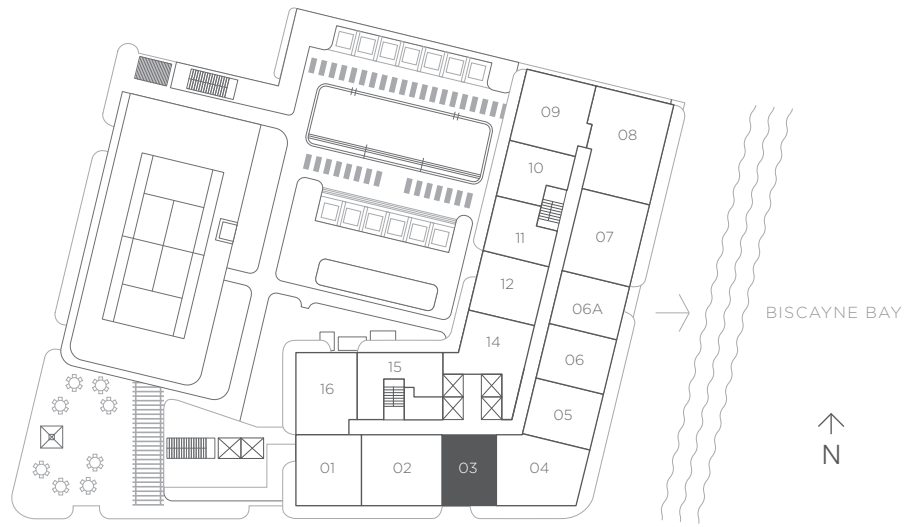
1 Bedroom 1 Bath + Den

A/C INTERIOR AREA 773 sq ft / 71.81 sq m

TERRACE AREA 138 sq ft / 12.82 sq m

TOTAL RESIDENCE 911 sq ft / 84.63 sq m

FLOORS 8 - 31



RESIDENCE 04

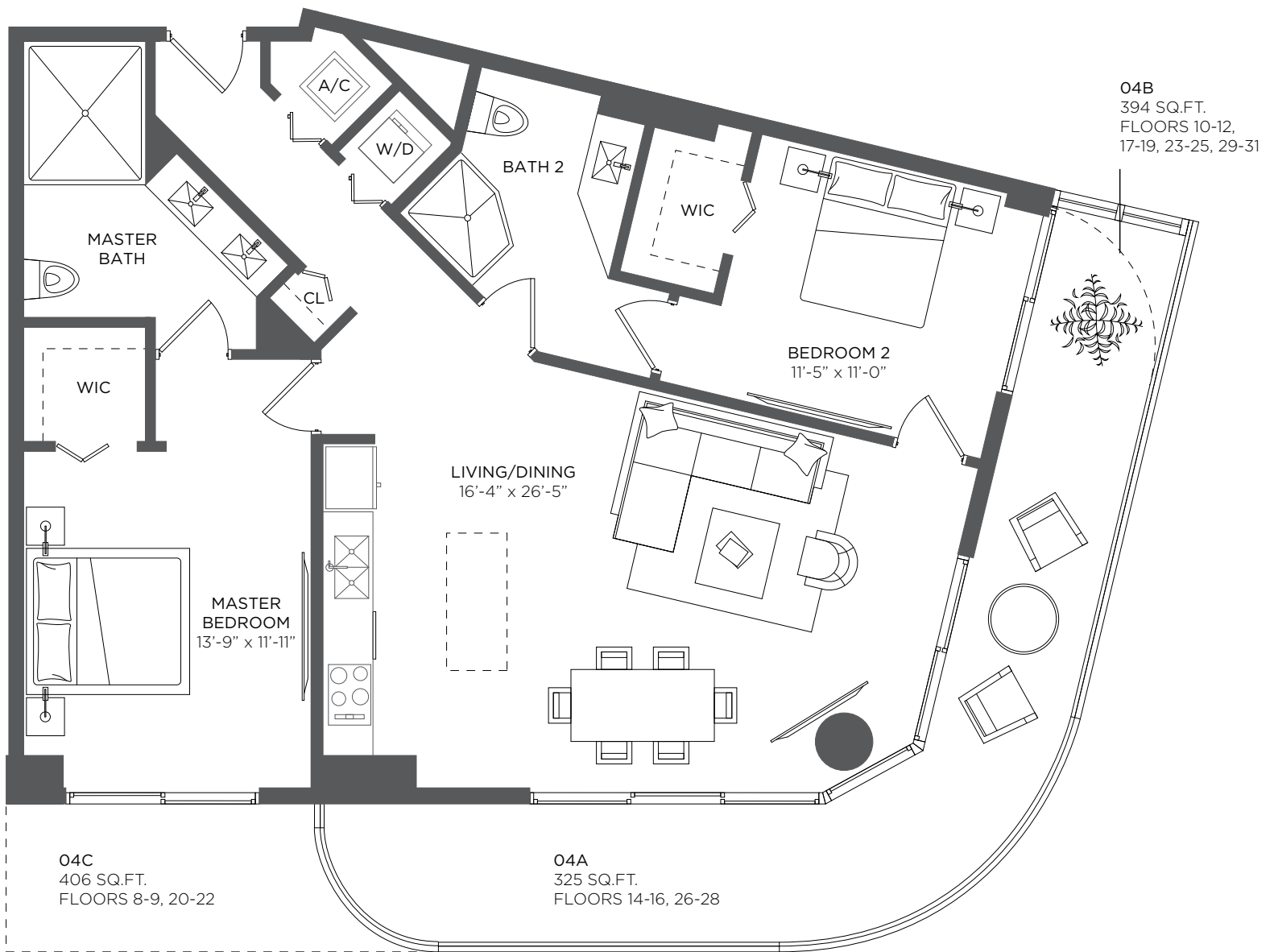
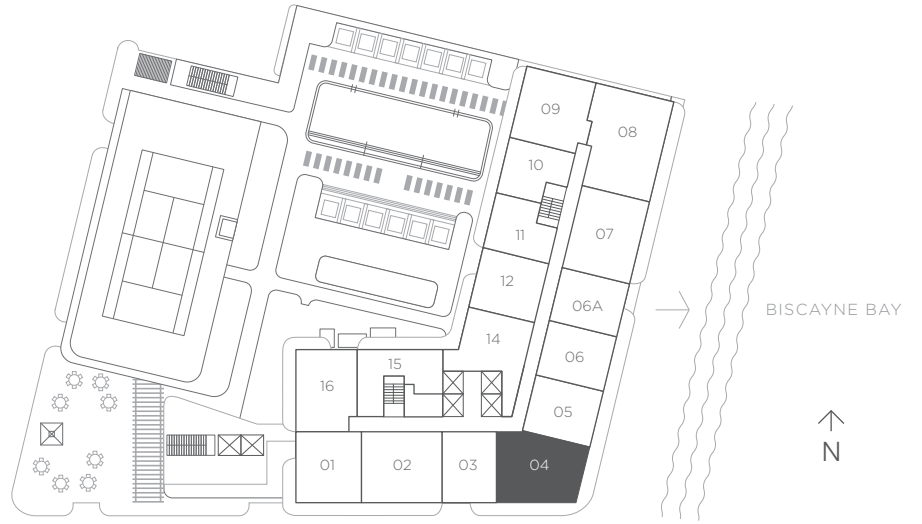
2 Bedrooms 2 Baths

A/C INTERIOR AREA 1,210 sq ft / 112.41 sq m

TERRACE AREA 325 sq ft / 30.19 sq m

TOTAL RESIDENCE 1,535 sq ft / 142.60 sq m

FLOORS 8 - 31



There are various methods for calculating the square footage of a Unit and depending on the method of calculation, the quoted square footage of a Unit in advertising materials may vary from the square footage of a Unit as stated or described in the Prospectus and the Declaration. The dimensions in the Unit shown in these floor plans have been calculated from the exterior boundaries of the exterior walls to the centerline of interior demising walls, including common elements such as structural walls and other interior structural components of the building and in fact vary from the dimensions that would be determined by using the description and definition of the "Unit" set forth in the Prospectus and the Declaration. For your reference, the area of the Unit, determined in accordance with the Unit boundaries as defined in the Prospectus and the Declaration is 1088 sqft for units 804, 904, 1004, 1104, 1204, 1404, 1504, 1604, 1704, 1804, 1904, 2004, 2104, 2204, 2304, 2404, 2504, 2604, 2704, 2804, 2904, 3004 and 3104, which is less than the square footage reflected here. The measurements of room set forth on this floor plan are generally taken at the greatest points of each given room (as if the room were a perfect rectangle) without regard for any cutouts. Accordingly, the area of the actual room will typically smaller than the product obtained by multiplying the stated length times width. All dimensions are approximate and may vary with actual construction. All floor plans are subject to change. The furnishings and décor illustrated are not included with the purchase of the Unit. See Prospectus for information regarding what is offered with the Unit and the calculation of the Unit square footage and dimensions.

RESIDENCE 05

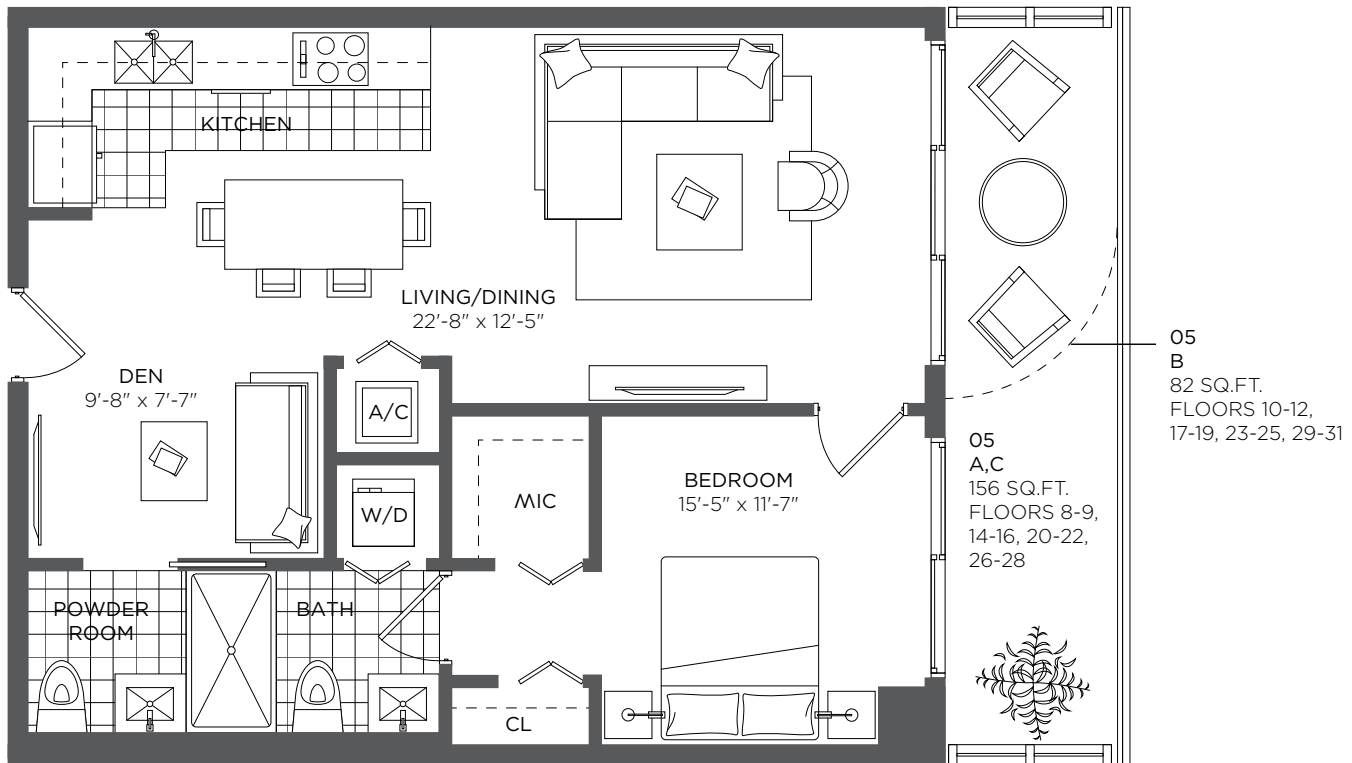
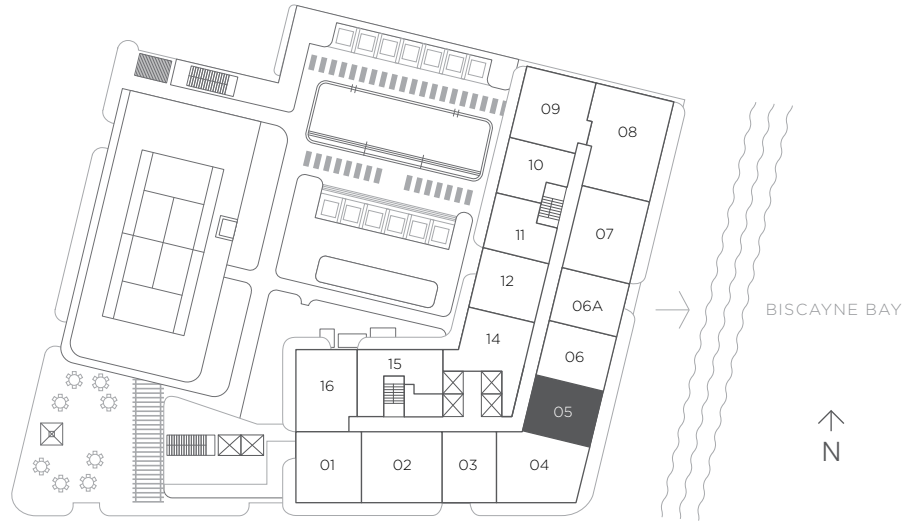
1 Bedroom 1.5 Baths + Den

A/C INTERIOR AREA 812 sq ft / 75.43 sq m

TERRACE AREA 156 sq ft / 14.49 sq m

TOTAL RESIDENCE 968 sq ft / 89.92 sq m

FLOORS 8 - 31



There are various methods for calculating the square footage of a Unit and depending on the method of calculation, the quoted square footage of a Unit in advertising materials may vary from the square footage of a Unit as stated or described in the Prospectus and the Declaration. The dimensions in the Unit shown in these floor plans have been calculated from the exterior boundaries of the exterior walls to the centerline of interior demising walls, including common elements such as structural walls and other interior structural components of the building and in fact vary from the dimensions that would be determined by using the description and definition of the "Unit" set forth in the Prospectus and the Declaration. For your reference, the area of the Unit, determined in accordance with the Unit boundaries as defined in the Prospectus and the Declaration is 733 sqft for units 805, 905, 1005, 1105, 1205, 1405, 1505, 1605, 1705, 1805, 1905, 2005, 2105, 2205, 2305, 2405, 2505, 2605, 2705, 2805, 2905, 3005 and 3105 which is less than the square footage reflected here. The measurements of room set forth on this floor plan are generally taken at the greatest points of each given room (as if the room were a perfect rectangle) without regard for any cutouts. Accordingly, the area of the actual room will typically smaller than the product obtained by multiplying the stated length times width. All dimensions are approximate and may vary with actual construction. All floor plans are subject to change. The furnishings and décor illustrated are not included with the purchase of the Unit. See Prospectus for information regarding what is offered with the Unit and the calculation of the Unit square footage and dimensions.

RESIDENCE 06

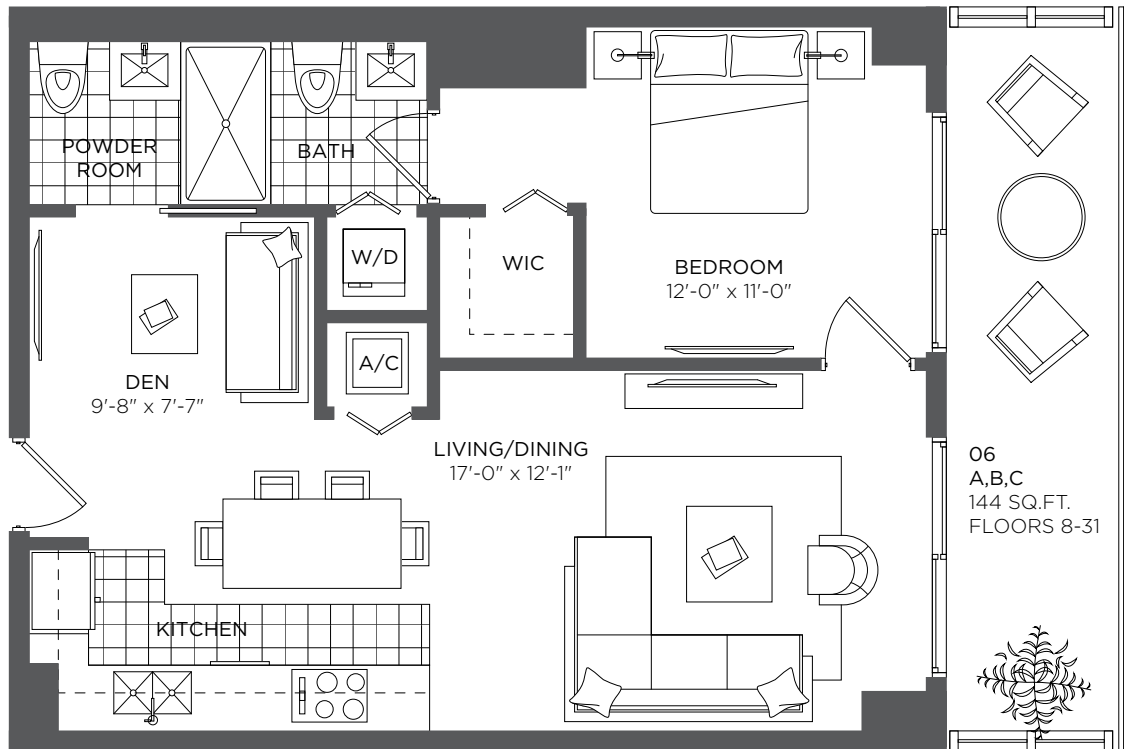
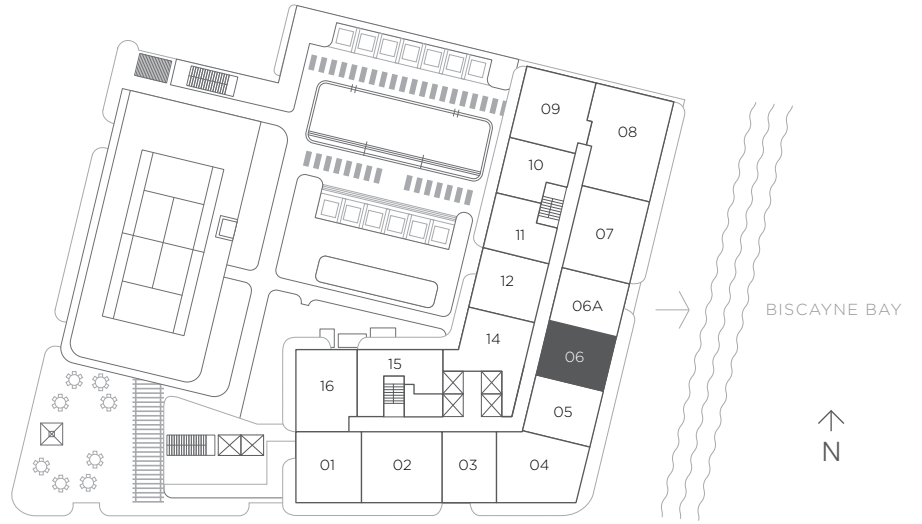
1 Bedroom 1.5 Baths + Den

A/C INTERIOR AREA 783 sq ft / 72.74 sq m

TERRACE AREA 144 sq ft / 13.37 sq m

TOTAL RESIDENCE 927 sq ft / 86.11 sq m

FLOORS 8 - 31



RESIDENCE 06A

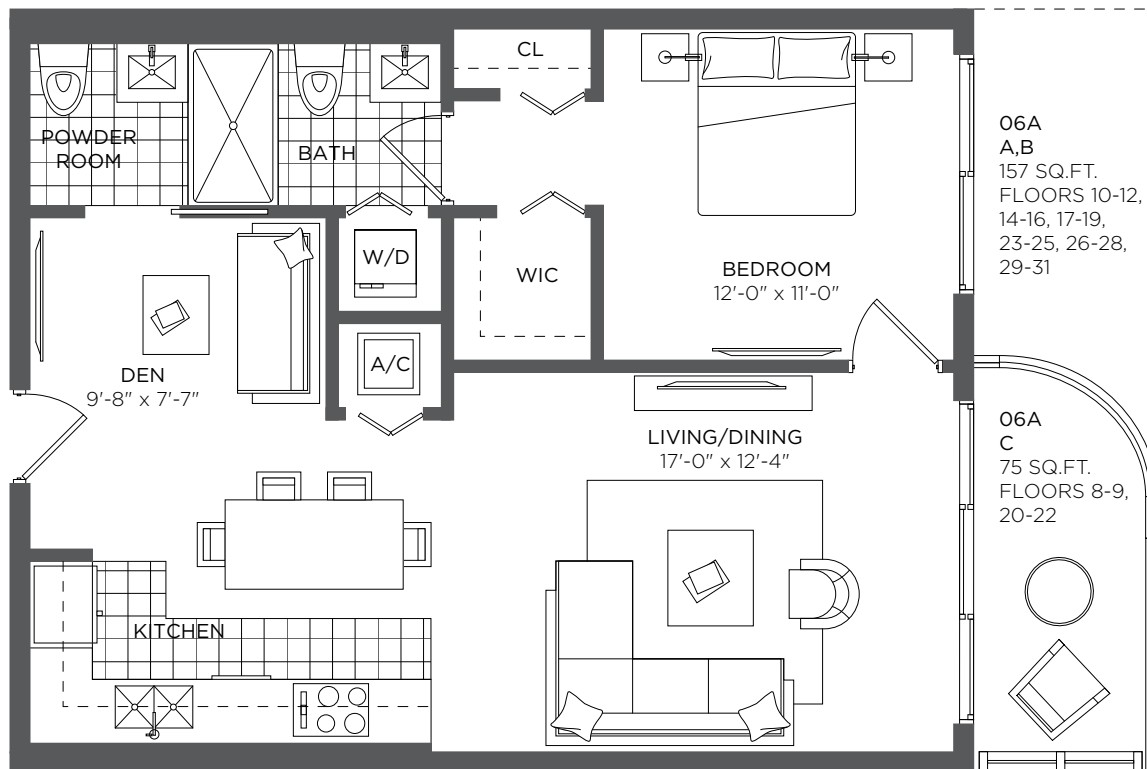
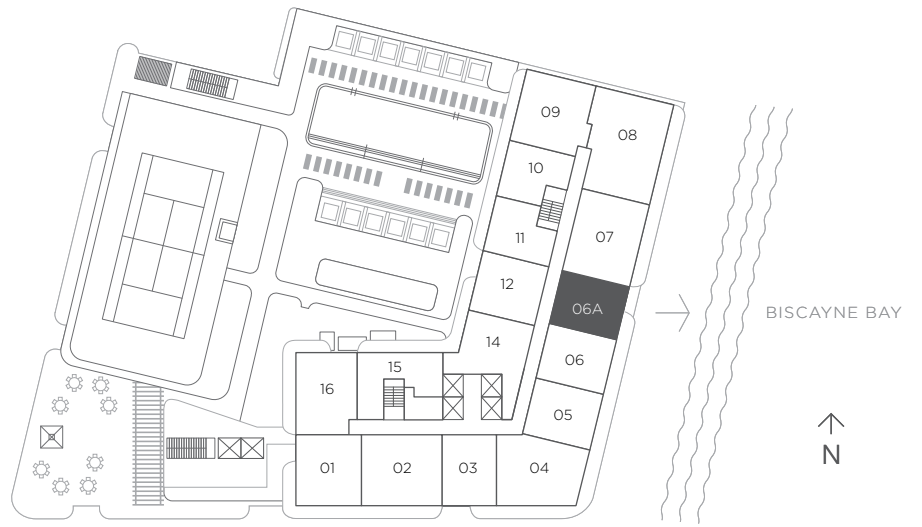
1 Bedroom 1.5 Baths + Den

A/C INTERIOR AREA 817 sq ft / 75.90 sq m

TERRACE AREA 75 sq ft / 6.96 sq m

TOTAL RESIDENCE 892 sq ft / 82.86 sq m

FLOORS 8 - 31



There are various methods for calculating the square footage of a Unit and depending on the method of calculation, the quoted square footage of a Unit in advertising materials may vary from the square footage of a Unit as stated or described in the Prospectus and the Declaration. The dimensions in the Unit shown in these floor plans have been calculated from the exterior boundaries of the exterior walls to the centerline of interior demising walls, including common elements such as structural walls and other interior structural components of the building and in fact vary from the dimensions that would be determined by using the description and definition of the "Unit" set forth in the Prospectus and the Declaration. For your reference, the area of the Unit, determined in accordance with the Unit boundaries as defined in the Prospectus and the Declaration is 719 sqft for units 806a, 906a, 1006a, 1106a, 1206a, 1406a, 1506a, 1606a, 1706a, 1806a, 1906a, 2006a, 2106a, 2206a, 2306a, 2406a, 2506a, 2606a, 2706a, 2806a, 2906a, 3006a and 3106a which is less than the square footage reflected here. The measurements of room set forth on this floor plan are generally taken at the greatest points of each given room (as if the room were a perfect rectangle) without regard for any cutouts. Accordingly, the area of the actual room will typically smaller than the product obtained by multiplying the stated length times width. All dimensions are approximate and may vary with actual construction. All floor plans are subject to change. The furnishings and décor illustrated are not included with the purchase of the Unit. See Prospectus for information regarding what is offered with the Unit and the calculation of the Unit square footage and dimensions.

RESIDENCE 07

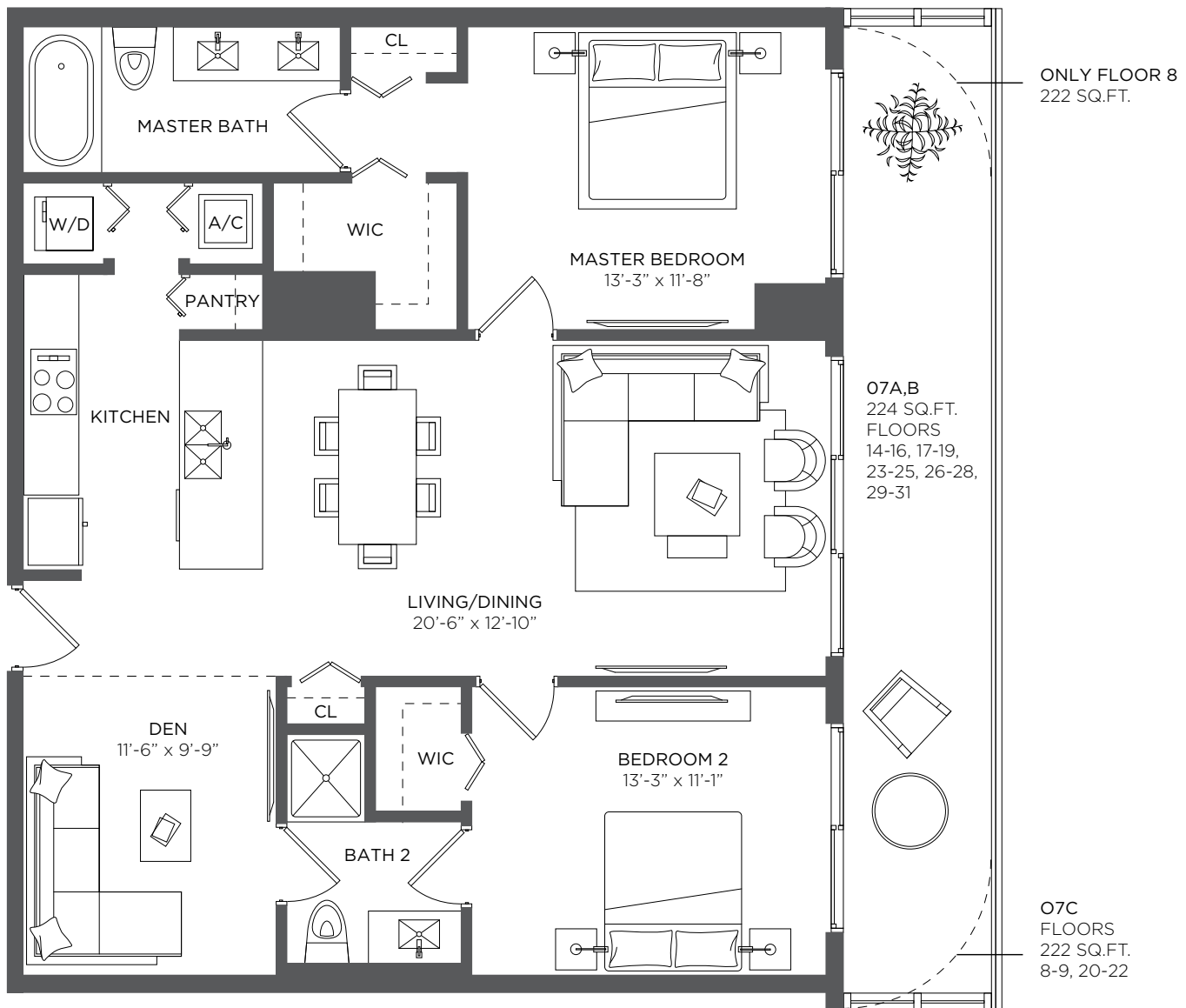
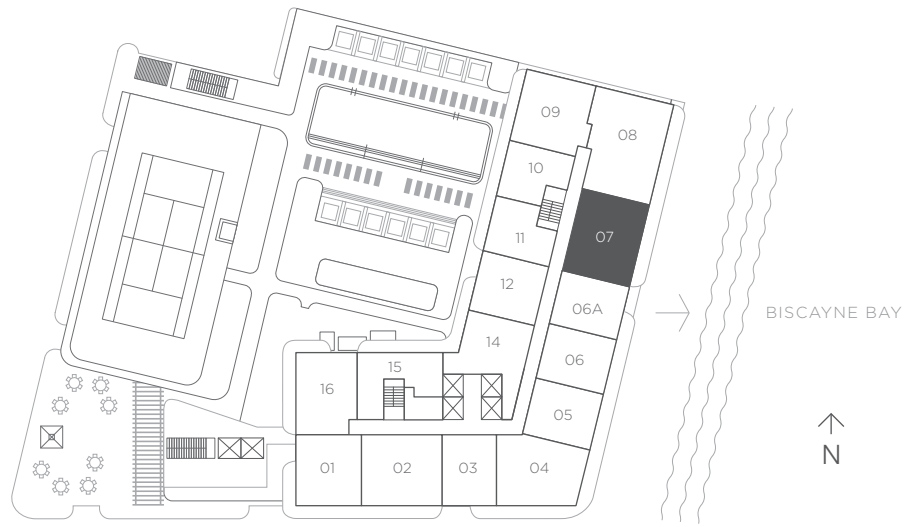
2 Bedrooms 2 Baths + Den

A/C INTERIOR AREA 1,205 sq ft / 111.94 sq m

TERRACE AREA 224 sq ft / 20.81 sq m

TOTAL RESIDENCE 1,429 sq ft / 132.75 sq m

FLOORS 8 - 31



There are various methods for calculating the square footage of a Unit and depending on the method of calculation, the quoted square footage of a Unit in advertising materials may vary from the square footage of a Unit as stated or described in the Prospectus and the Declaration. The dimensions in the Unit shown in these floor plans have been calculated from the exterior boundaries of the exterior walls to the centerline of interior demising walls, including common elements such as structural walls and other interior structural components of the building and in fact vary from the dimensions that would be determined by using the description and definition of the "Unit" set forth in the Prospectus and the Declaration. For your reference, the area of the Unit, determined in accordance with the Unit boundaries as defined in the Prospectus and the Declaration is 1067 sqft for units 807, 907, 1007, 1107, 1207, 1407, 1507, 1607, 1707, 1807, 1907, 2007, 2107, 2207, 2307, 2407, 2507, 2607, 2707, 2807, 2907, 3007 and 3107, which is less than the square footage reflected here. The measurements of room set forth on this floor plan are generally taken at the greatest points of each given room (as if the room were a perfect rectangle) without regard for any cutouts. Accordingly, the area of the actual room will typically smaller than the product obtained by multiplying the stated length times width. All dimensions are approximate and may vary with actual construction. All floor plans are subject to change. The furnishings and décor illustrated are not included with the purchase of the Unit. See Prospectus for information regarding what is offered with the Unit and the calculation of the Unit square footage and dimensions.

RESIDENCE 08

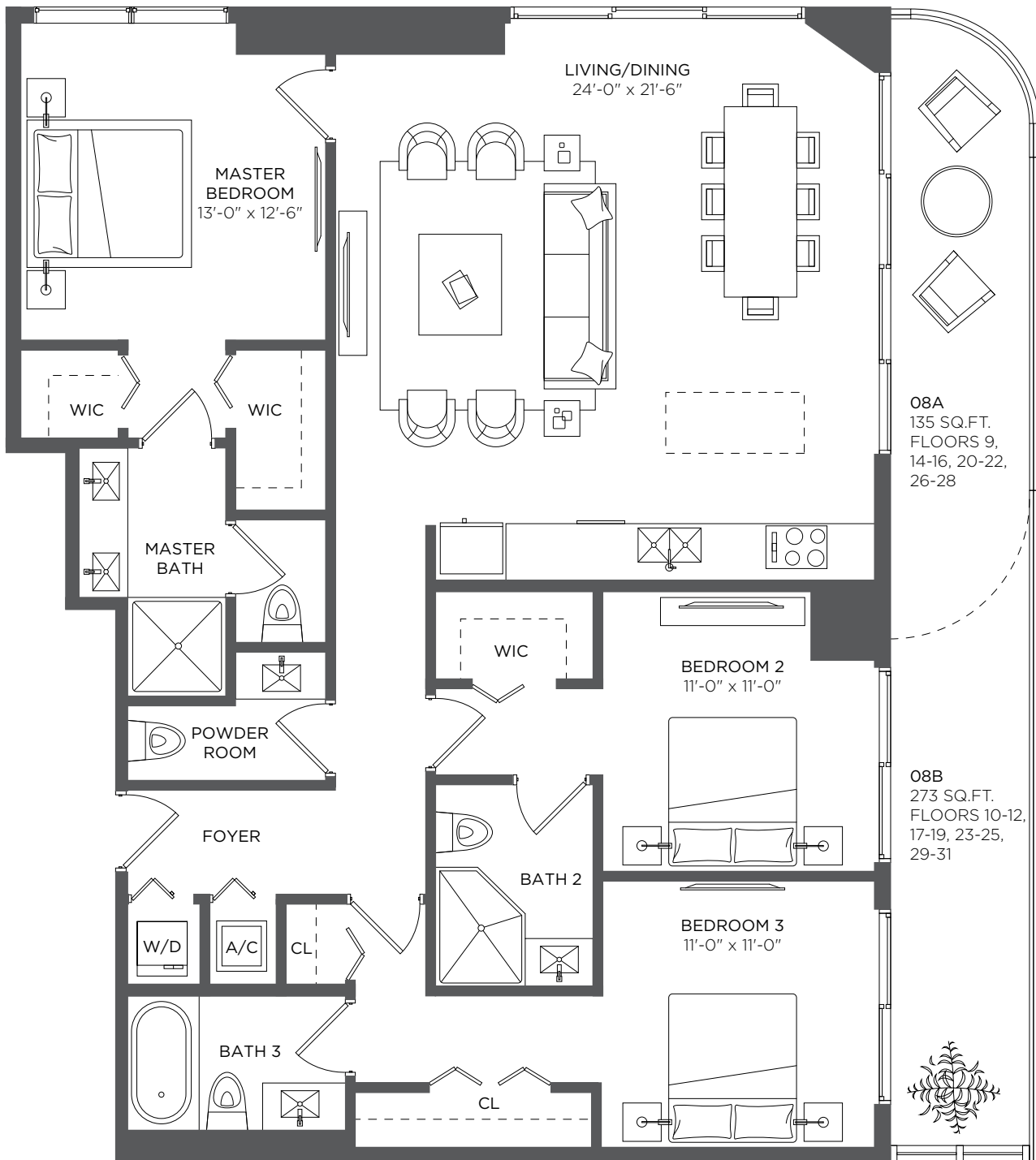
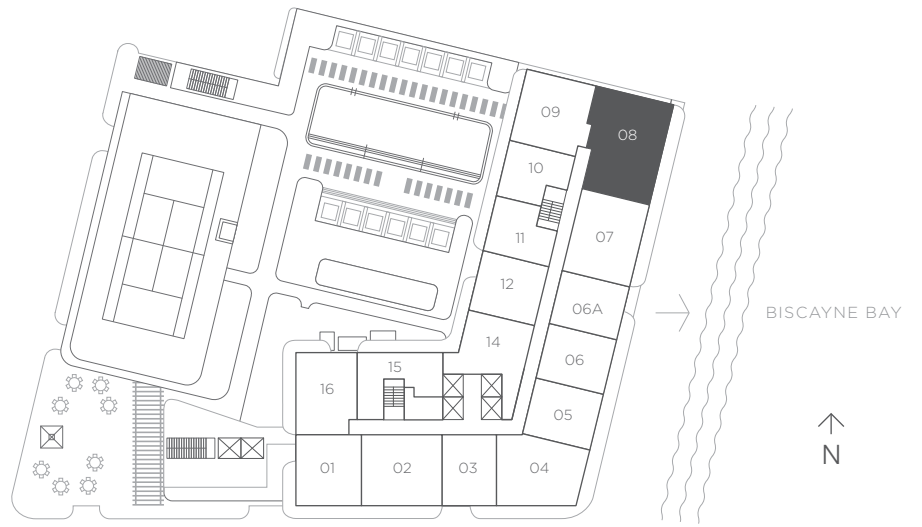
3 Bedrooms 3.5 Baths

A/C INTERIOR AREA 1,595 sq ft / 148.18 sq m

TERRACE AREA 273 sq ft / 25.36 sq m

TOTAL RESIDENCE 1,868 sq ft / 173.46 sq m

FLOORS 9 - 31



There are various methods for calculating the square footage of a Unit and depending on the method of calculation, the quoted square footage of a Unit in advertising materials may vary from the square footage of a Unit as stated or described in the Prospectus and the Declaration. The dimensions in the Unit shown in these floor plans have been calculated from the exterior boundaries of the exterior walls to the centerline of interior demising walls, including common elements such as structural walls and other interior structural components of the building and in fact vary from the dimensions that would be determined by using the description and definition of the "Unit" set forth in the Prospectus and the Declaration. For your reference, the area of the Unit, determined in accordance with the Unit boundaries as defined in the Prospectus and the Declaration is 1431 sqft for units 908, 1008, 1108, 1208, 1408, 1508, 1608, 1708, 1808, 1908, 2008, 2108, 2208, 2308, 2408, 2508, 2608, 2708, 2808, 2908, 3008 and 3108, which is less than the square footage reflected here. The measurements of room set forth on this floor plan are generally taken at the greatest points of each given room (as if the room were a perfect rectangle) without regard for any cutouts. Accordingly, the area of the actual room will typically smaller than the product obtained by multiplying the stated length times width. All dimensions are approximate and may vary with actual construction. All floor plans are subject to change. The furnishings and décor illustrated are not included with the purchase of the Unit. See Prospectus for information regarding what is offered with the Unit and the calculation of the Unit square footage and dimensions.

RESIDENCE 09

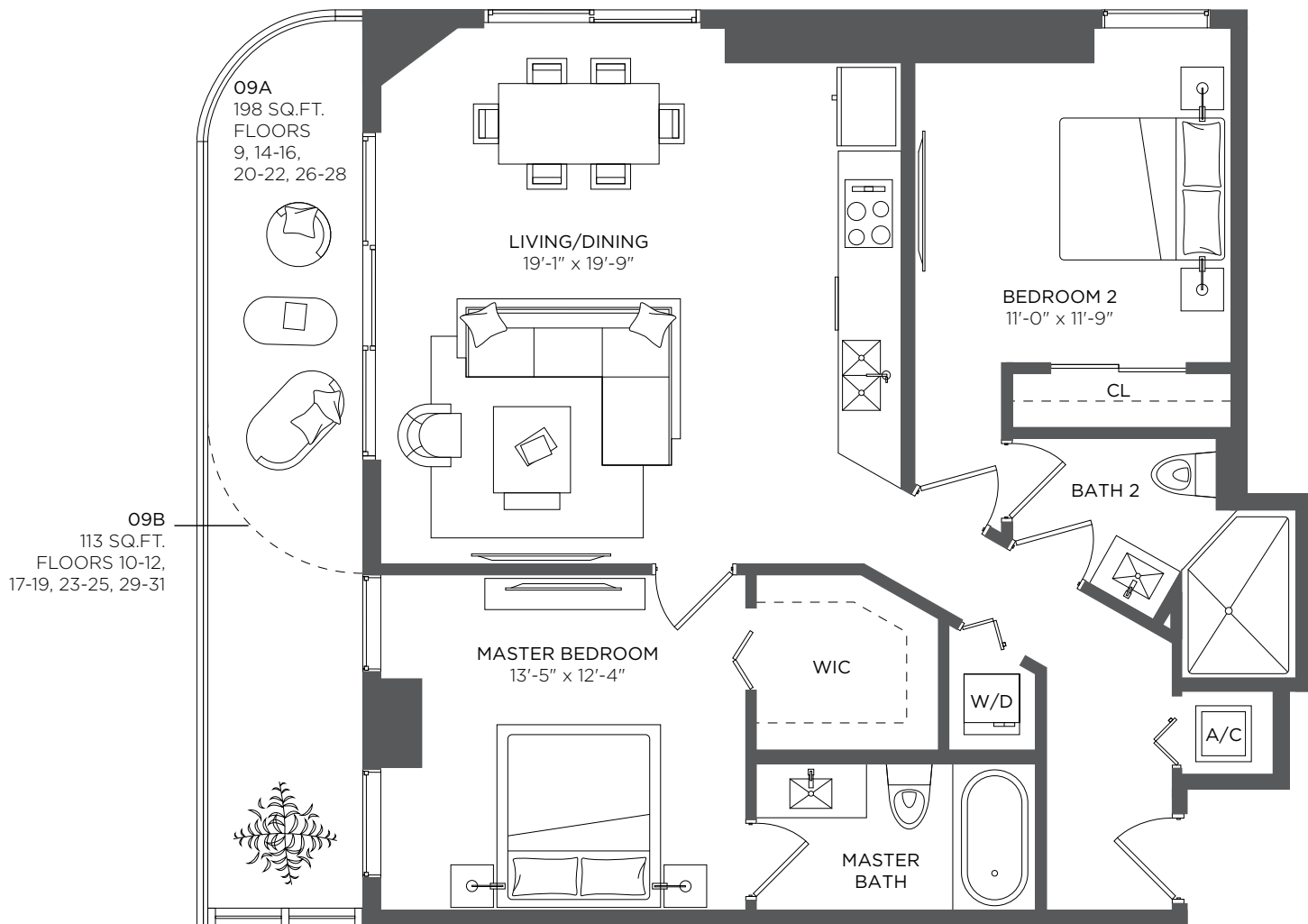
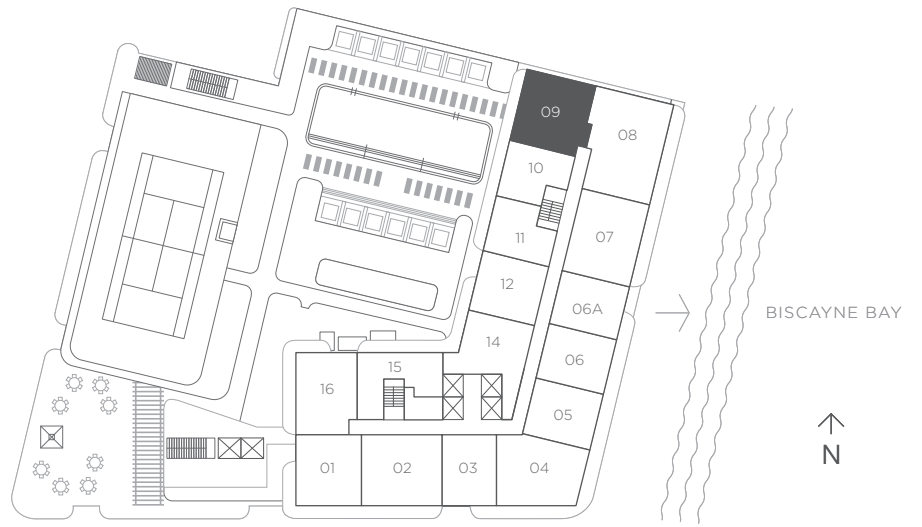
2 Bedrooms 2 Baths

A/C INTERIOR AREA 1,101 sq ft / 102.28 sq m

TERRACE AREA 198 sq ft / 18.39 sq m

TOTAL RESIDENCE 1,299 sq ft / 120.67 sqm

FLOORS 9 - 31



RESIDENCE 10

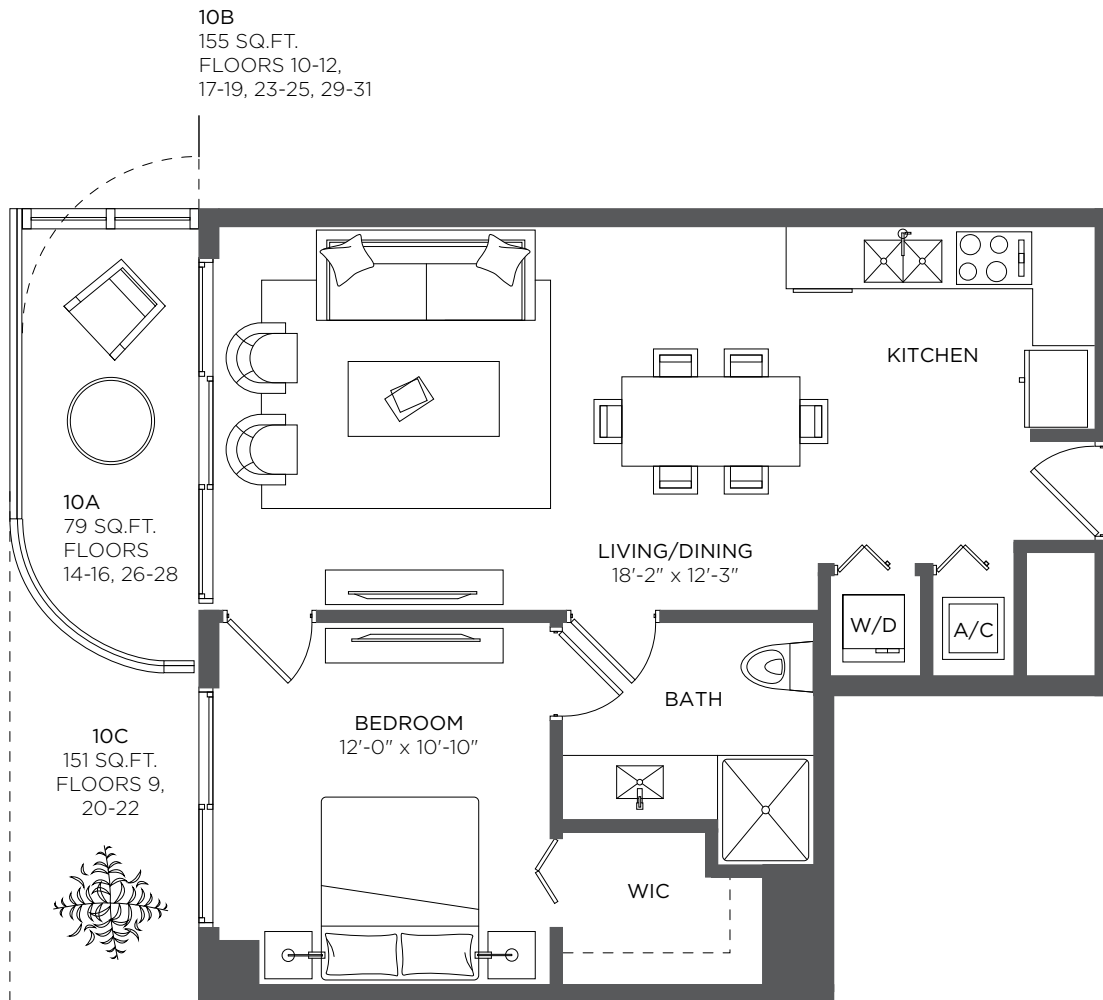
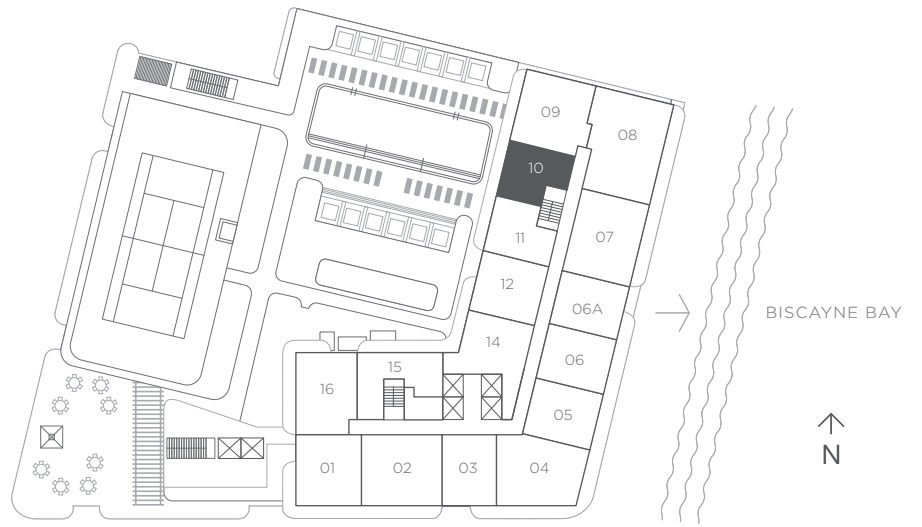
1 Bedroom 1 Bath

A/C INTERIOR AREA 681 sq ft / 63.26 sq m

TERRACE AREA 79 sq ft / 7.33 sq m

TOTAL RESIDENCE 760 sq ft / 70.59 sq m

FLOORS 9 - 31



RESIDENCE 11

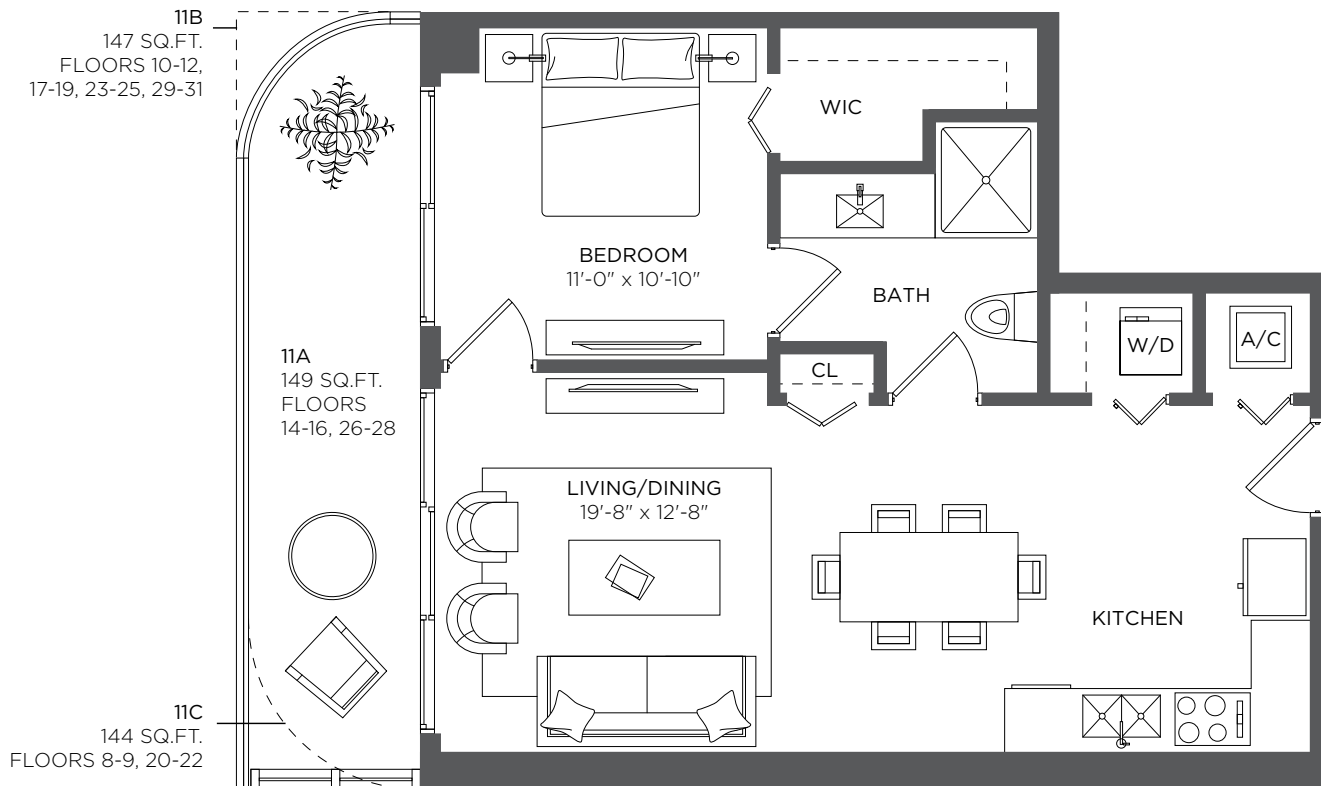
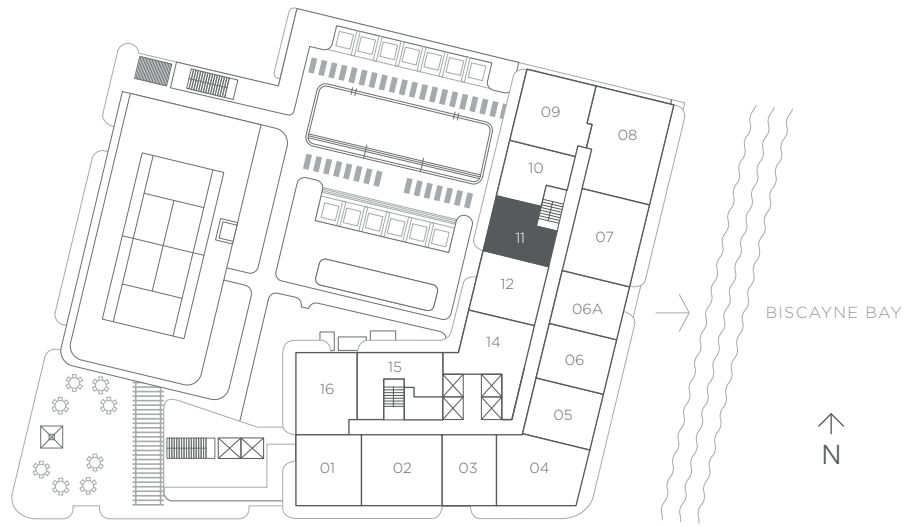
1 Bedroom 1 Bath

A/C INTERIOR AREA 694 sq ft / 64.47 sq m

TERRACE AREA 149 sq ft / 13.84 sq m

TOTAL RESIDENCE 843 sq ft / 78.31 sq m

FLOORS 8 - 31



RESIDENCE 12

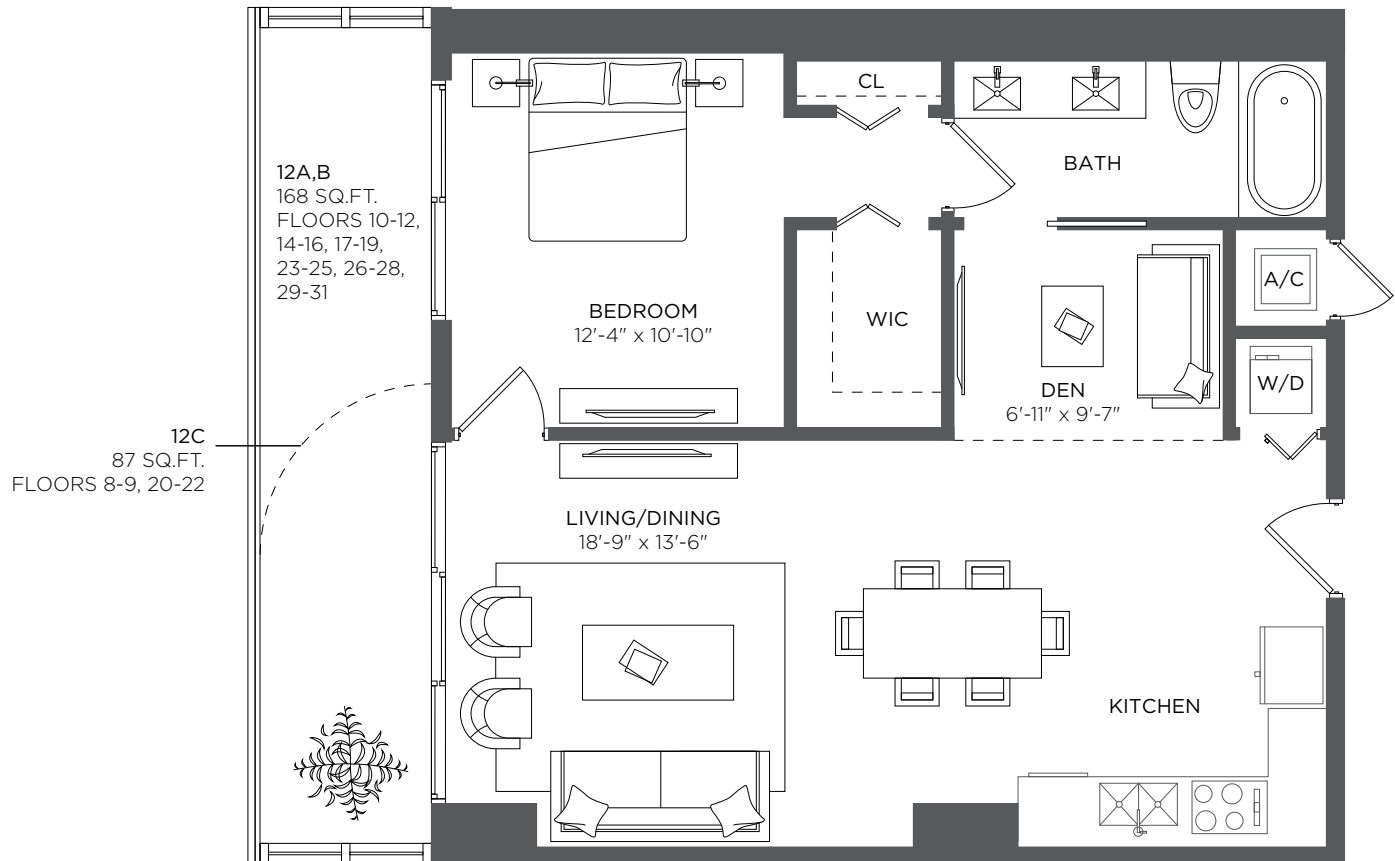
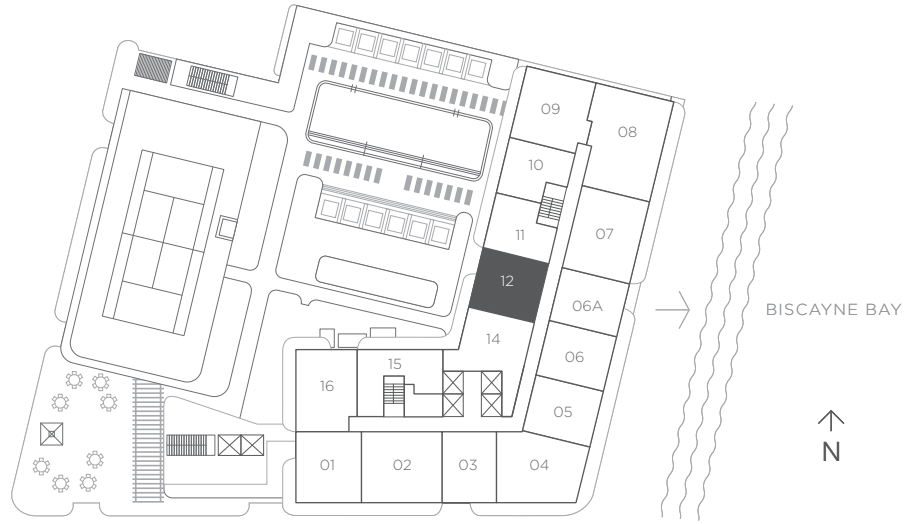
1 Bedroom 1 Bath + Den

A/C INTERIOR AREA 845 sq ft / 78.50 sq m

TERRACE AREA 168 sq ft / 15.60 sq m

TOTAL RESIDENCE 1,013 sq ft / 94.10 sq m

FLOORS 8 - 31



RESIDENCE 14

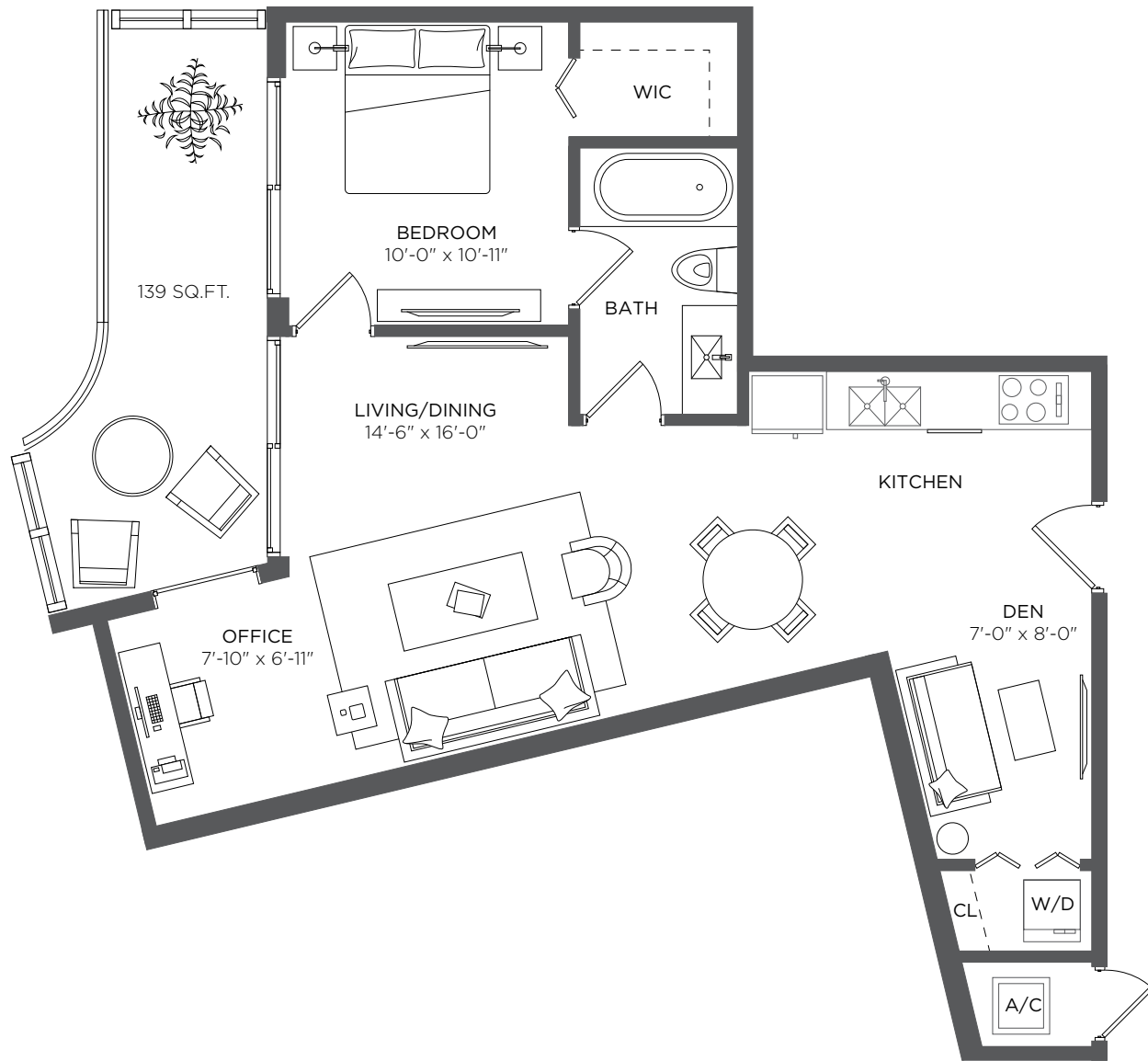
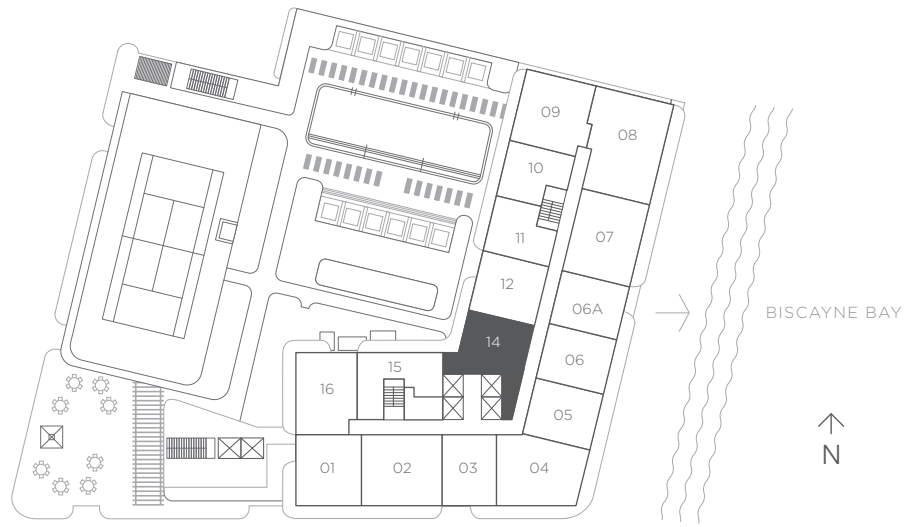
1 Bedroom 1 Bath + Den

A/C INTERIOR AREA 825 sq ft / 85.93 sq m

TERRACE AREA 139 sq ft / 12.91 sq m

TOTAL RESIDENCE 964 sq ft / 98.84 sq m

FLOORS 8 - 31



RESIDENCE 15

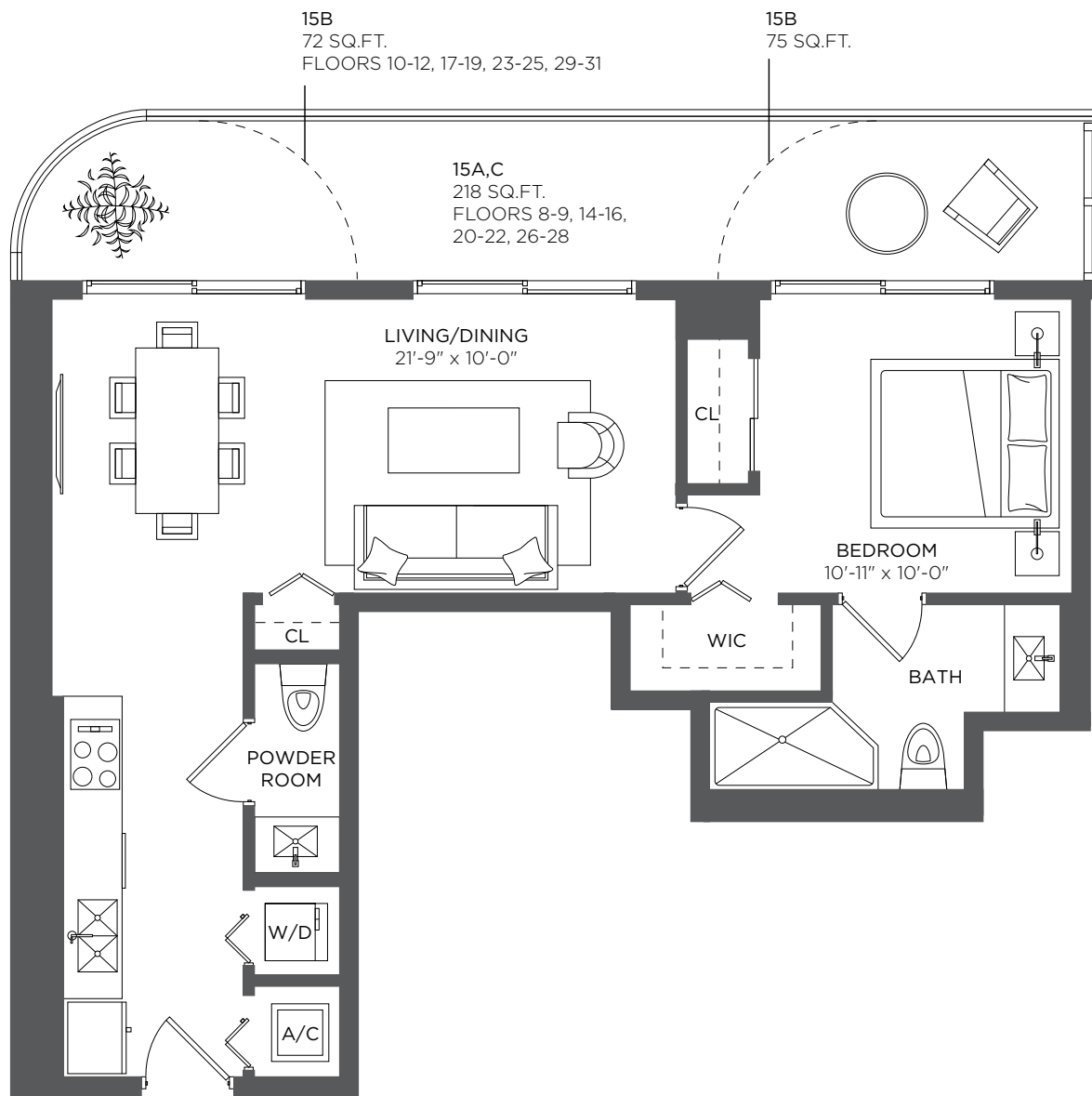
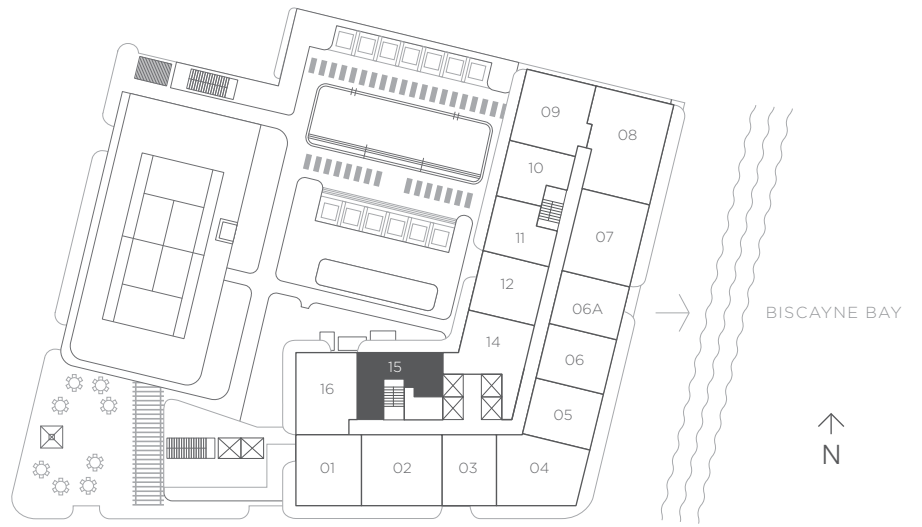
1 Bedroom 1.5 Baths

A/C INTERIOR AREA 779 sq ft / 72.37 sq m

TERRACE AREA 218 sq ft / 20.25 sq m

TOTAL RESIDENCE 997 sq ft / 92.62 sq m

FLOORS 8 - 31



RESIDENCE 16

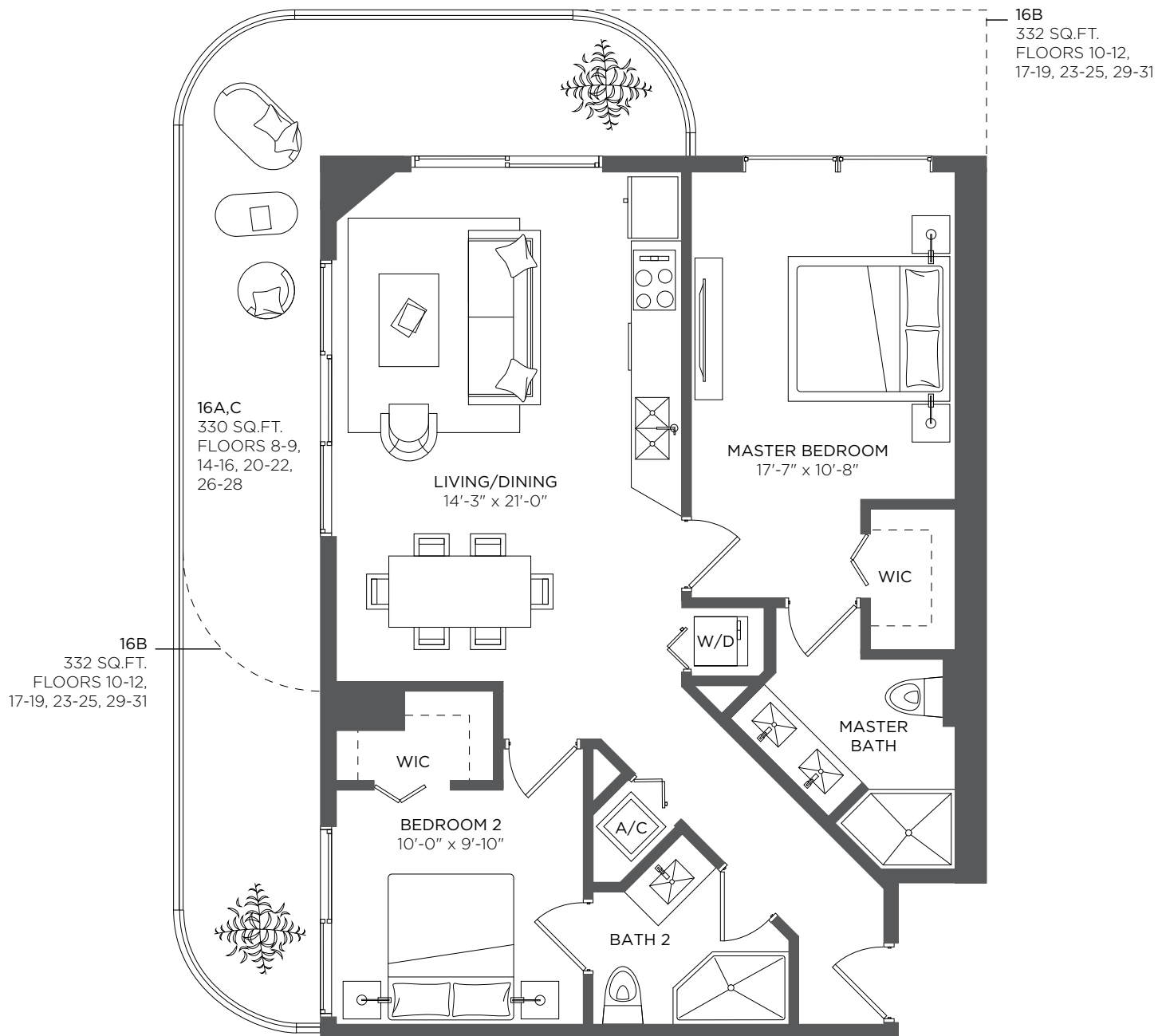
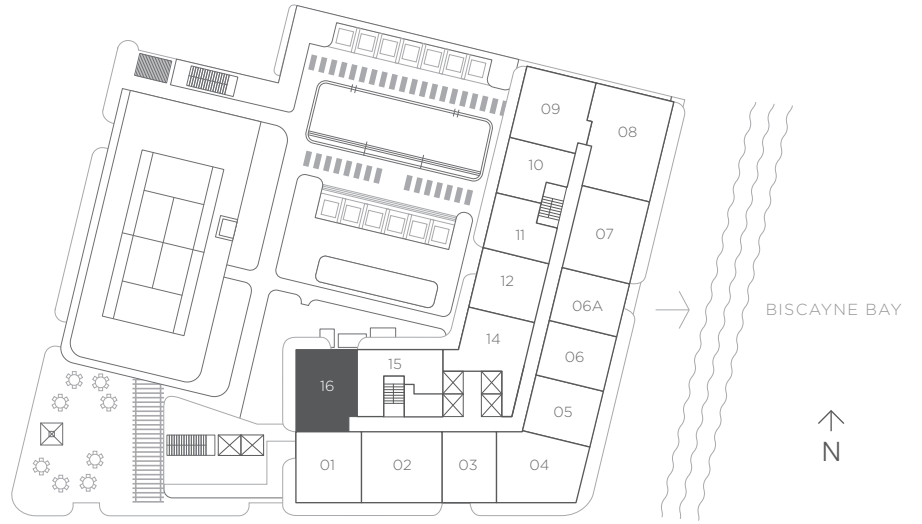
2 Bedrooms 2 Baths

A/C INTERIOR AREA 982 sq ft / 91.23 sq m

TERRACE AREA 330 sq ft / 30.65 sq m

TOTAL RESIDENCE 1,322 sq ft / 121.88 sq m

FLOORS 8 - 31



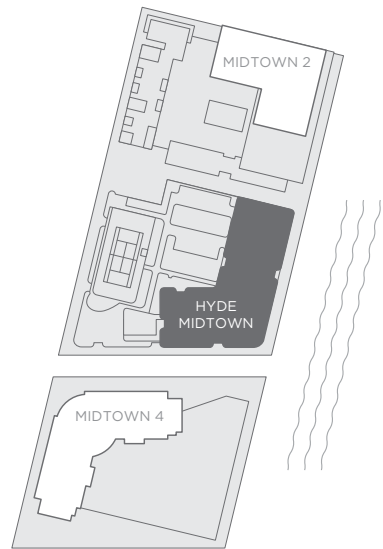
There are various methods for calculating the square footage of a Unit and depending on the method of calculation, the quoted square footage of a Unit in advertising materials may vary from the square footage of a Unit as stated or described in the Prospectus and the Declaration. The dimensions in the Unit shown in these floor plans have been calculated from the exterior boundaries of the exterior walls to the centerline of interior demising walls, including common elements such as structural walls and other interior structural components of the building and in fact vary from the dimensions that would be determined by using the description and definition of the "Unit" set forth in the Prospectus and the Declaration. For your reference, the area of the Unit, determined in accordance with the Unit boundaries as defined in the Prospectus and the Declaration is 867 sqft for units 816, 916, 1016, 1116, 1216, 1416, 1516, 1616, 1716, 1816, 1916, 2016, 2116, 2216, 2316, 2416, 2516, 2616, 2716, 2816, 2916, 3016, and 3116, which is less than the square footage reflected here. The measurements of room set forth on this floor plan are generally taken at the greatest points of each given room (as if the room were a perfect rectangle) without regard for any cutouts. Accordingly, the area of the actual room will typically smaller than the product obtained by multiplying the stated length times width. All dimensions are approximate and may vary with actual construction. All floor plans are subject to change. The furnishings and décor illustrated are not included with the purchase of the Unit. See Prospectus for information regarding what is offered with the Unit and the calculation of the Unit square footage and dimensions.

KEY PLAN TOWER RESIDENCES

FLOORS 8 - 31



PROXIMITY KEY PLAN



There are various methods for calculating the square footage of a Unit and depending on the method of calculation, the quoted square footage of a Unit in advertising materials may vary from the square footage of a Unit as stated or described in the Prospectus and the Declaration. The dimensions in the Unit shown in this floor plan have been calculated from the exterior boundaries of the exterior walls to the centerline of interior demising walls, including common elements such as structural walls and other interior structural components of the building and in fact vary from the dimensions that result by using the description of the "Unit" and dimensions set forth in the Prospectus and the Declaration. The area of the Unit, determined in accordance with "Unit" as defined in the Prospectus and the Declaration is less than the square footage reflected here. The configuration, allocation, and use of space or the floor plan design may vary from that depicted here or in the Prospectus and/or Declaration because the Developer reserves the right in the Prospectus to make architectural, engineering, design, dimension, specification, and floor plan changes at any time, in the Developer's discretion, without notice to Unit buyers. The measurement of any room in this floor plan is generally taken at the greatest points of each given room (as if the room were a perfect rectangle) without regard for any cutouts. Accordingly, the area of the actual room will typically be smaller than the product obtained by multiplying the length times width stated here. The furnishings, appliances, fixtures, and décor illustrated are not included with the purchase of the Unit. See Prospectus for information regarding what is offered with the Unit and the calculation of the Unit square footage and dimensions.

RESIDENCE 01

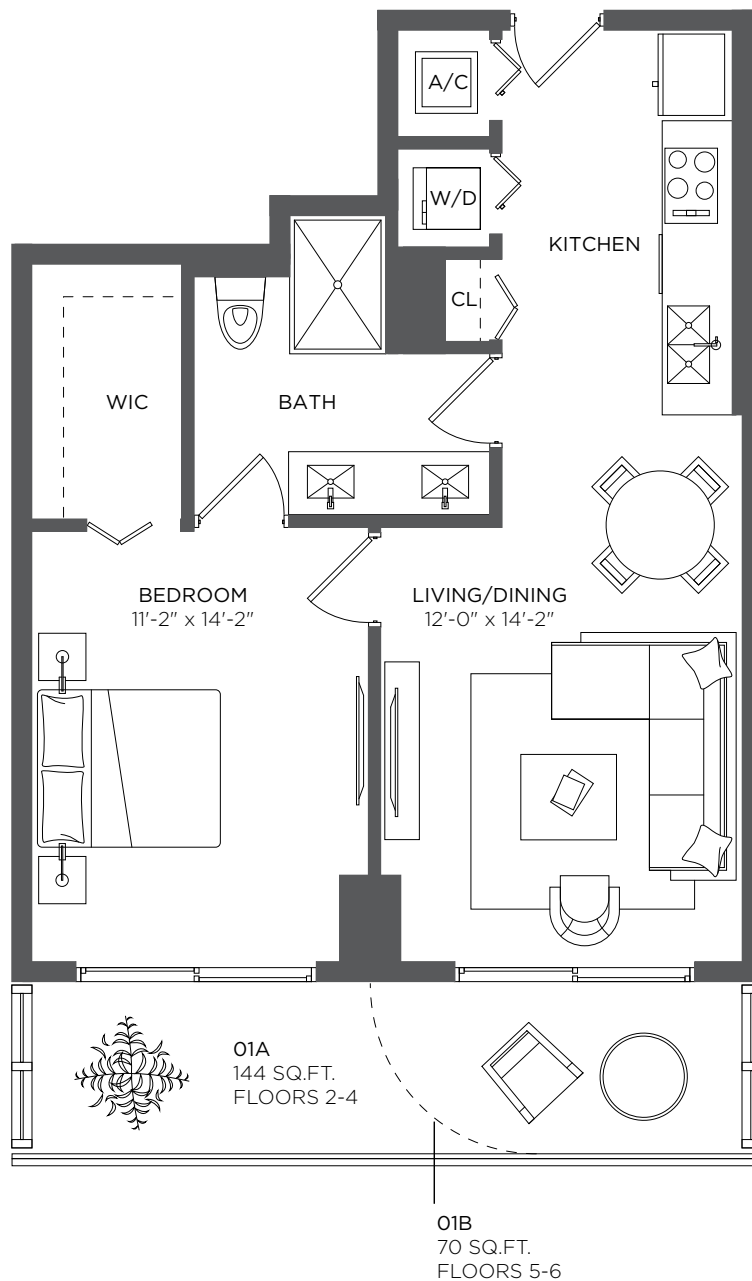
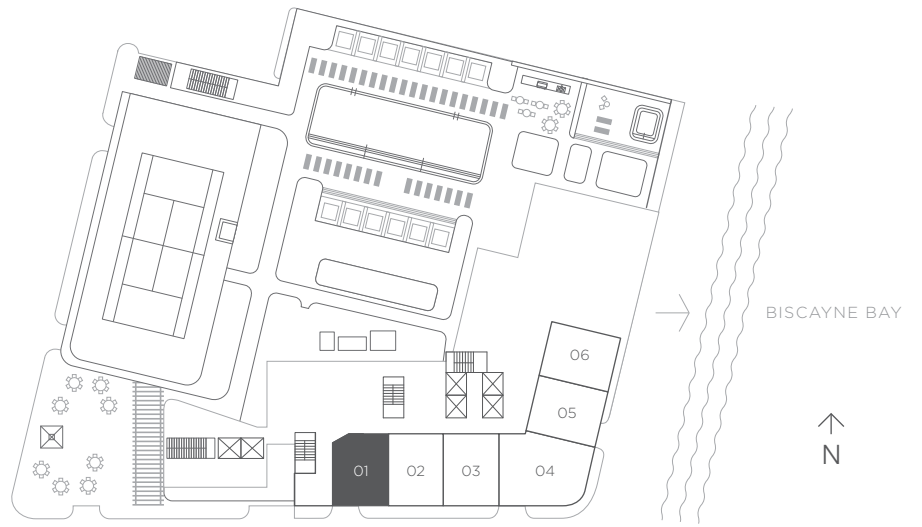
1 Bedroom 1 Bath

A/C INTERIOR AREA 687 sq ft / 63.84 sq m

TERRACE AREA 144 sq ft / 13.38 sq m

TOTAL RESIDENCE 831 sq ft / 77.22 sq m

FLOORS 2 - 6



RESIDENCE 02

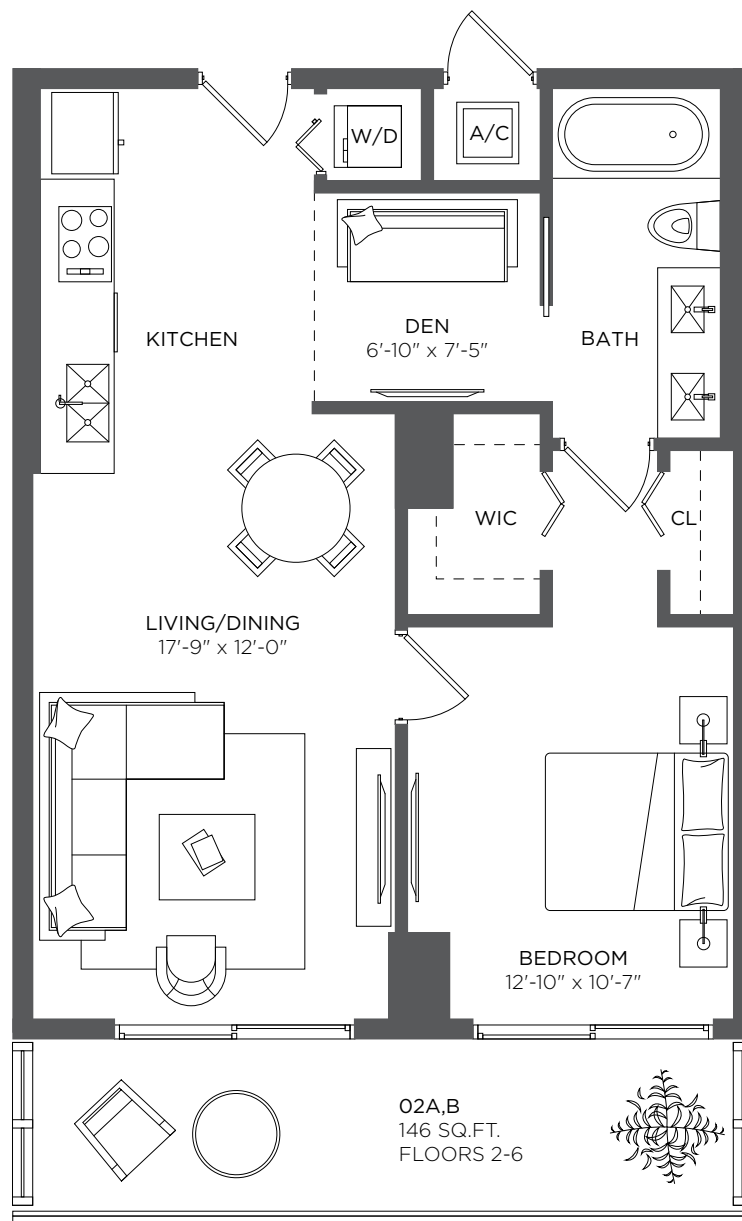
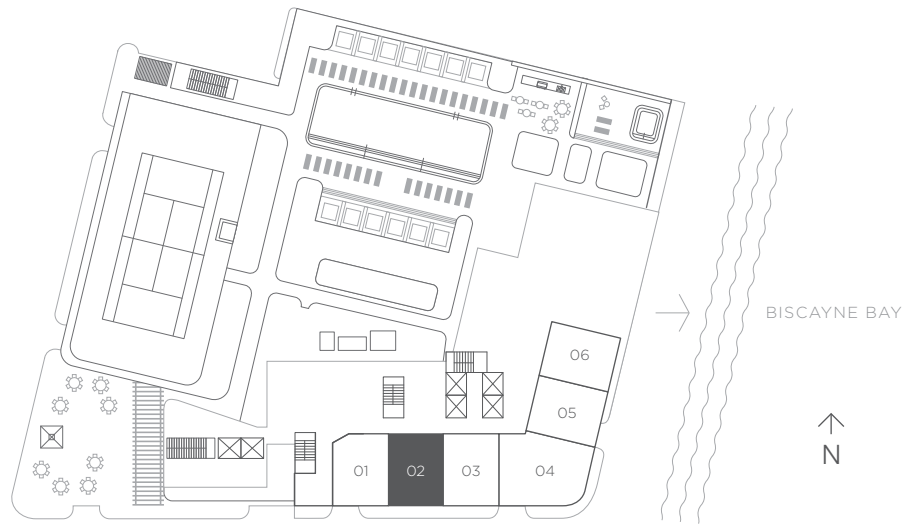
1 Bedroom 1 Bath + Den

A/C INTERIOR AREA 787 sq ft / 73.14 sq m

TERRACE AREA 146 sq ft / 13.56 sq m

TOTAL RESIDENCE 933 sq ft / 86.70 sq m

FLOORS 2 - 6



There are various methods for calculating the square footage of a Unit and depending on the method of calculation, the quoted square footage of a Unit in advertising materials may vary from the square footage of a Unit as stated or described in the Prospectus and the Declaration. The dimensions in the Unit shown in these floor plans have been calculated from the exterior boundaries of the exterior walls to the centerline of interior demising walls, including common elements such as structural walls and other interior structural components of the building and in fact vary from the dimensions that would be determined by using the description and definition of the "Unit" set forth in the Prospectus and the Declaration. For your reference, the area of the Unit, determined in accordance with the Unit boundaries as defined in the Prospectus and the Declaration is 690 sqft for units L202, L302, L402, L502 and L602, which is less than the square footage reflected here. The measurements of room set forth on this floor plan are generally taken at the greatest points of each given room (as if the room were a perfect rectangle) without regard for any cutouts. Accordingly, the area of the actual room will typically smaller than the product obtained by multiplying the stated length times width. All dimensions are approximate and may vary with actual construction. All floor plans are subject to change. The furnishings and décor illustrated are not included with the purchase of the Unit. See Prospectus for information regarding what is offered with the Unit and the calculation of the Unit square footage and dimensions.

RESIDENCE 03

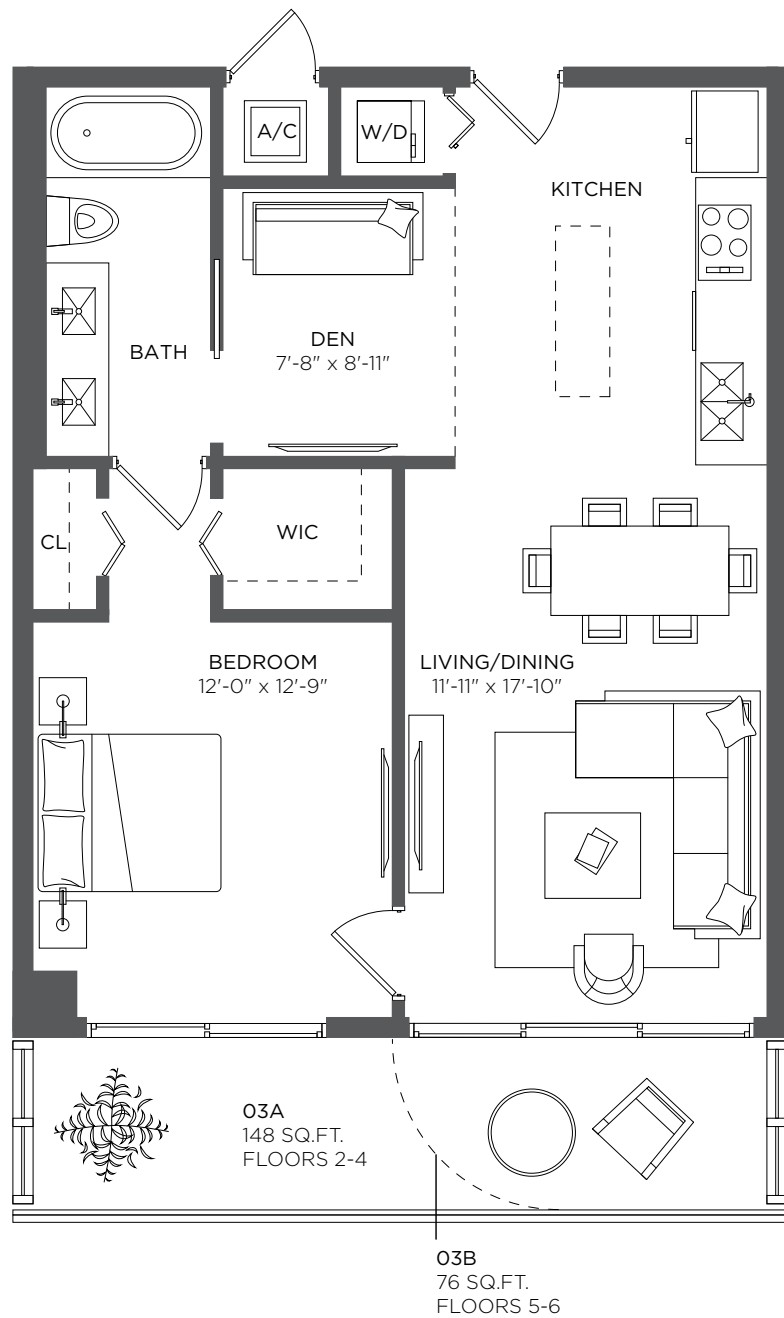
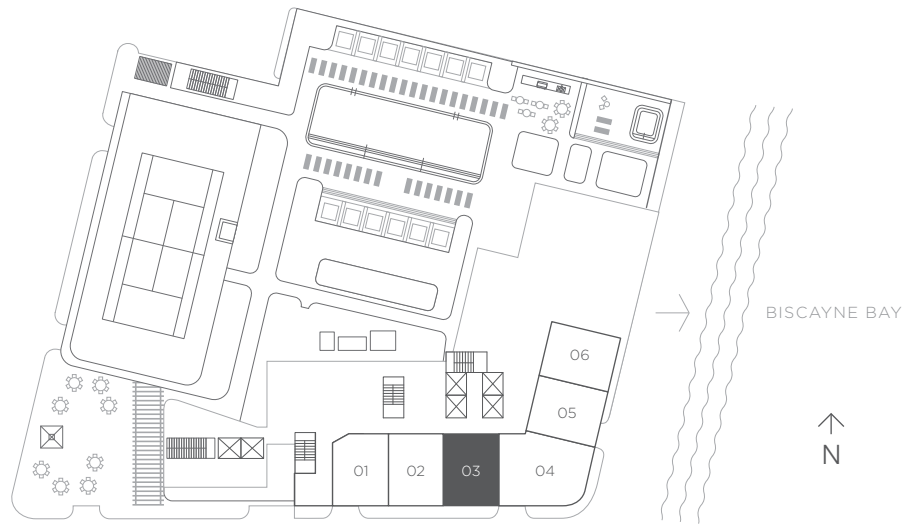
1 Bedroom 1 Bath + Den

A/C INTERIOR AREA 773 sq ft / 71.81 sq m

TERRACE AREA 148 sq ft / 13.75 sq m

TOTAL RESIDENCE 921 sq ft / 85.56 sq m

FLOORS 2 - 6



RESIDENCE 04

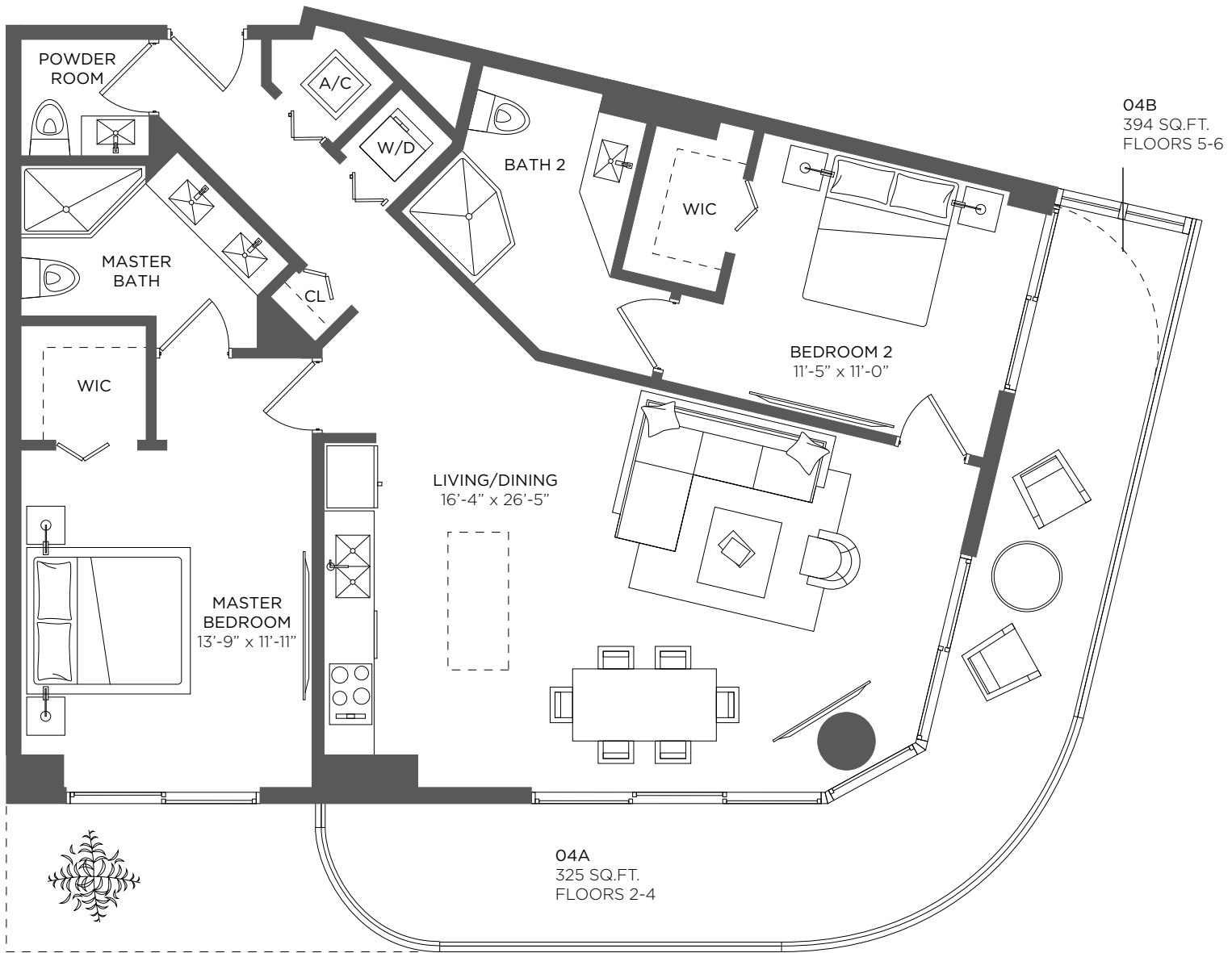
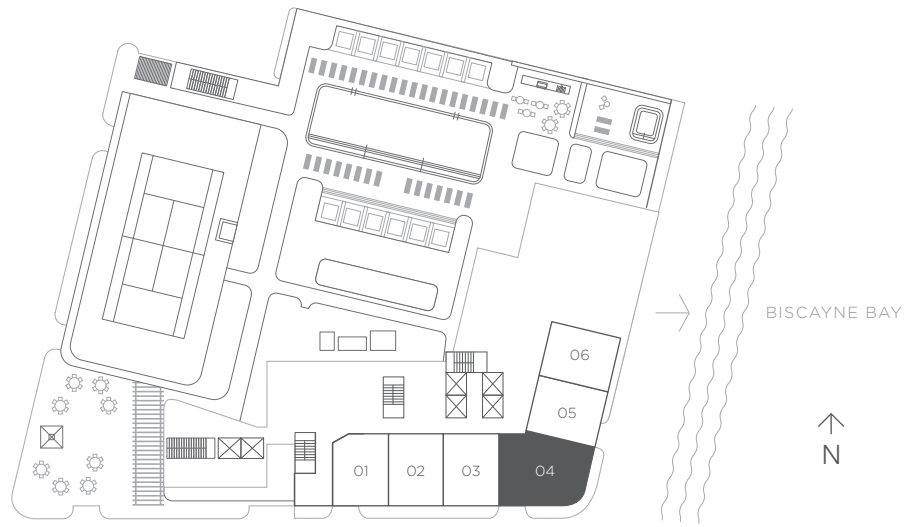
2 Bedrooms 2.5 Baths

A/C INTERIOR AREA 1,210 sq ft / 112.41 sq m

TERRACE AREA 325 sq ft / 30.19 sq m

TOTAL RESIDENCE 1,535 sq ft / 142.60 sq m

FLOORS 2 - 6



There are various methods for calculating the square footage of a Unit and depending on the method of calculation, the quoted square footage of a Unit in advertising materials may vary from the square footage of a Unit as stated or described in the Prospectus and the Declaration. The dimensions in the Unit shown in these floor plans have been calculated from the exterior boundaries of the exterior walls to the centerline of interior demising walls, including common elements such as structural walls and other interior structural components of the building and in fact vary from the dimensions that would be determined by using the description and definition of the "Unit" set forth in the Prospectus and the Declaration. For your reference, the area of the Unit, determined in accordance with the Unit boundaries as defined in the Prospectus and the Declaration is 1084 sqft for units L204, L304, L404, L504 and L604, which is less than the square footage reflected here. The measurements of room set forth on this floor plan are generally taken at the greatest points of each given room (as if the room were a perfect rectangle) without regard for any cutouts. Accordingly, the area of the actual room will typically smaller than the product obtained by multiplying the stated length times width. All dimensions are approximate and may vary with actual construction. All floor plans are subject to change. The furnishings and décor illustrated are not included with the purchase of the Unit. See Prospectus for information regarding what is offered with the Unit and the calculation of the Unit square footage and dimensions.

RESIDENCE 05

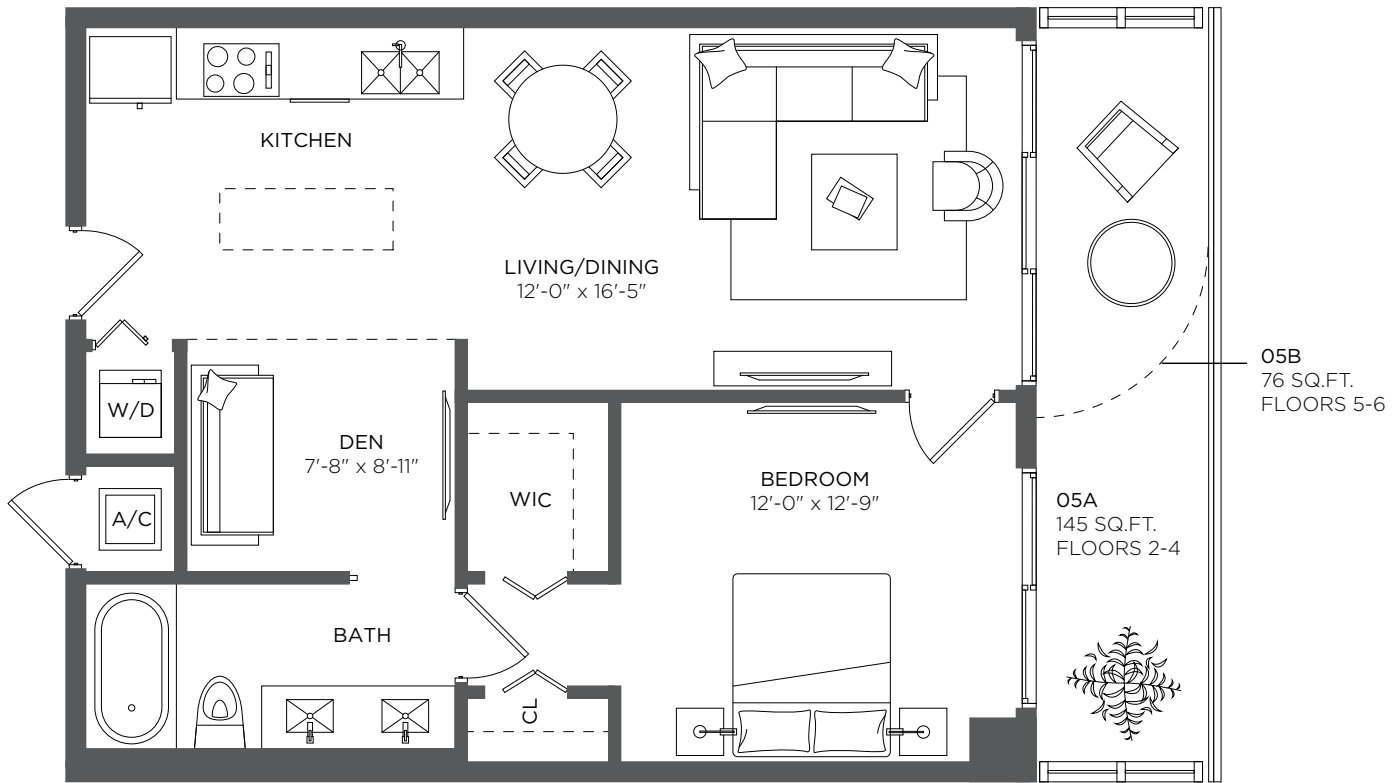
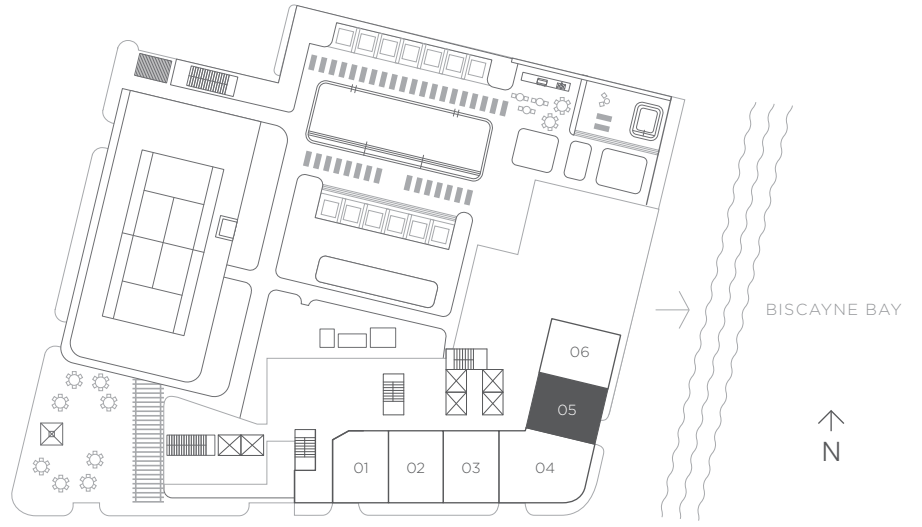
1 Bedroom 1 Bath + Den

A/C INTERIOR AREA 802 sq ft / 74.50 sq m

TERRACE AREA 145 sq ft / 13.47 sq m

TOTAL RESIDENCE 947 sq ft / 87.97 sq m

FLOORS 2 - 6



There are various methods for calculating the square footage of a Unit and depending on the method of calculation, the quoted square footage of a Unit in advertising materials may vary from the square footage of a Unit as stated or described in the Prospectus and the Declaration. The dimensions in the Unit shown in these floor plans have been calculated from the exterior boundaries of the exterior walls to the centerline of interior demising walls, including common elements such as structural walls and other interior structural components of the building and in fact vary from the dimensions that would be determined by using the description and definition of the "Unit" set forth in the Prospectus and the Declaration. For your reference, the area of the Unit, determined in accordance with the Unit boundaries as defined in the Prospectus and the Declaration is 730 sqft for units L205, L305, L405, L505 and L605, which is less than the square footage reflected here. The measurements of room set forth on this floor plan are generally taken at the greatest points of each given room (as if the room were a perfect rectangle) without regard for any cutouts. Accordingly, the area of the actual room will typically smaller than the product obtained by multiplying the stated length times width. All dimensions are approximate and may vary with actual construction. All floor plans are subject to change. The furnishings and décor illustrated are not included with the purchase of the Unit. See Prospectus for information regarding what is offered with the Unit and the calculation of the Unit square footage and dimensions.

RESIDENCE 06

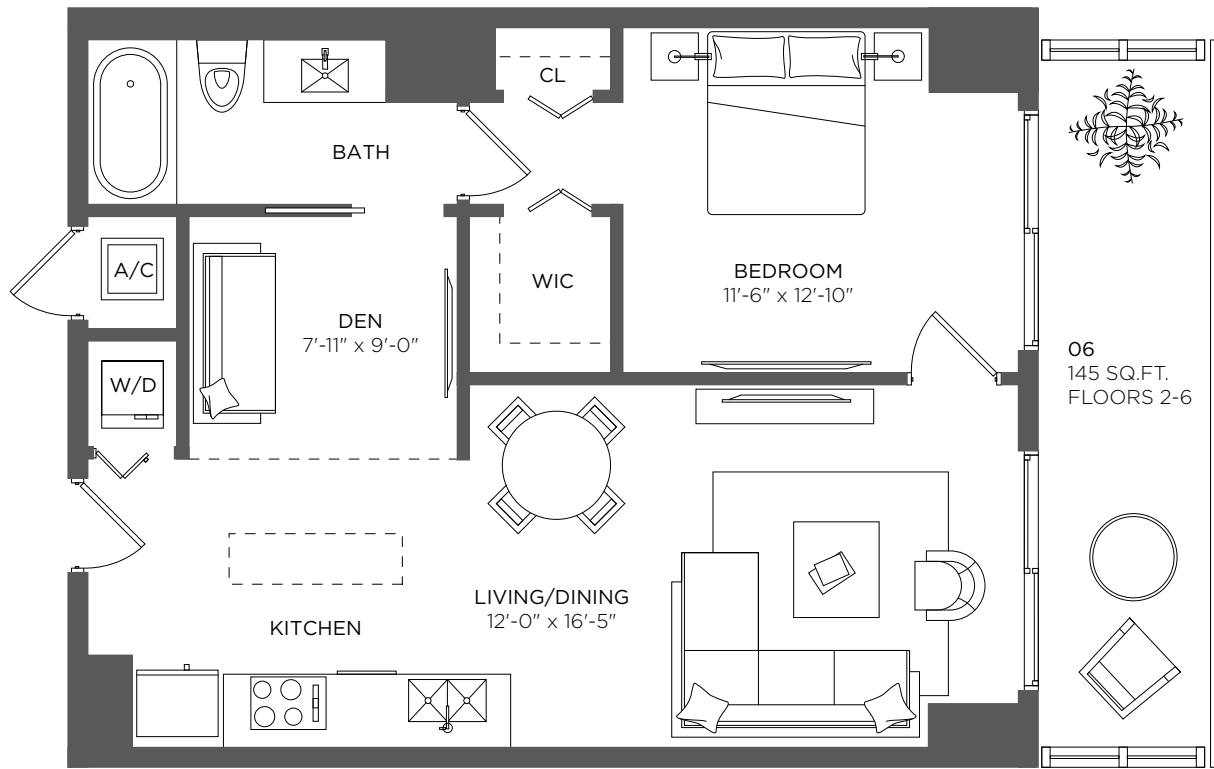
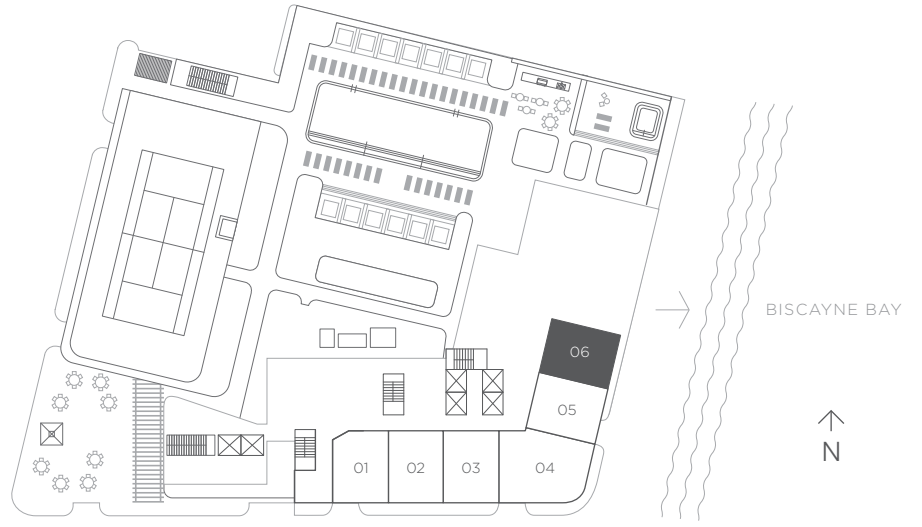
1 Bedroom 1 Bath + Den

A/C INTERIOR AREA 782 sq ft / 72.65 sq m

TERRACE AREA 145 sq ft / 13.47 sq m

TOTAL RESIDENCE 927 sq ft / 86.12 sq m

FLOORS 2 - 6

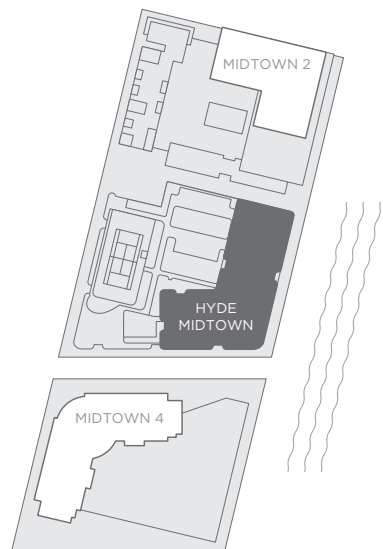


There are various methods for calculating the square footage of a Unit and depending on the method of calculation, the quoted square footage of a Unit in advertising materials may vary from the square footage of a Unit as stated or described in the Prospectus and the Declaration. The dimensions in the Unit shown in these floor plans have been calculated from the exterior boundaries of the exterior walls to the centerline of interior demising walls, including common elements such as structural walls and other interior structural components of the building and in fact vary from the dimensions that would be determined by using the description and definition of the "Unit" set forth in the Prospectus and the Declaration. For your reference, the area of the Unit, determined in accordance with the Unit boundaries as defined in the Prospectus and the Declaration is 694 sqft for units L206, L306, L406, L506 and L606, which is less than the square footage reflected here. The measurements of room set forth on this floor plan are generally taken at the greatest points of each given room (as if the room were a perfect rectangle) without regard for any cutouts. Accordingly, the area of the actual room will typically smaller than the product obtained by multiplying the stated length times width. All dimensions are approximate and may vary with actual construction. All floor plans are subject to change. The furnishings and décor illustrated are not included with the purchase of the Unit. See Prospectus for information regarding what is offered with the Unit and the calculation of the Unit square footage and dimensions.

KEY PLAN LINER RESIDENCES

FLOORS 2 - 6

PROXIMITY KEY PLAN



There are various methods for calculating the square footage of a Unit and depending on the method of calculation, the quoted square footage of a Unit in advertising materials may vary from the square footage of a Unit as stated or described in the Prospectus and the Declaration. The dimensions in the Unit shown in this floor plan have been calculated from the exterior boundaries of the exterior walls to the centerline of interior demising walls, including common elements such as structural walls and other interior structural components of the building and in fact vary from the dimensions that result by using the description of the "Unit" and dimensions set forth in the Prospectus and the Declaration. The area of the Unit, determined in accordance with "Unit" as defined in the Prospectus and the Declaration is less than the square footage reflected here. The configuration, allocation, and use of space or the floor plan design may vary from that depicted here or in the Prospectus and/or Declaration because the Developer reserves the right in the Prospectus to make architectural, engineering, design, dimension, specification, and floor plan changes at any time, in the Developer's discretion, without notice to Unit buyers. The measurement of any room in this floor plan is generally taken at the greatest points of each given room (as if the room were a perfect rectangle) without regard for any cutouts. Accordingly, the area of the actual room will typically be smaller than the product obtained by multiplying the length times width stated here. The furnishings, appliances, fixtures, and décor illustrated are not included with the purchase of the Unit. See Prospectus for information regarding what is offered with the Unit and the calculation of the Unit square footage and dimensions.