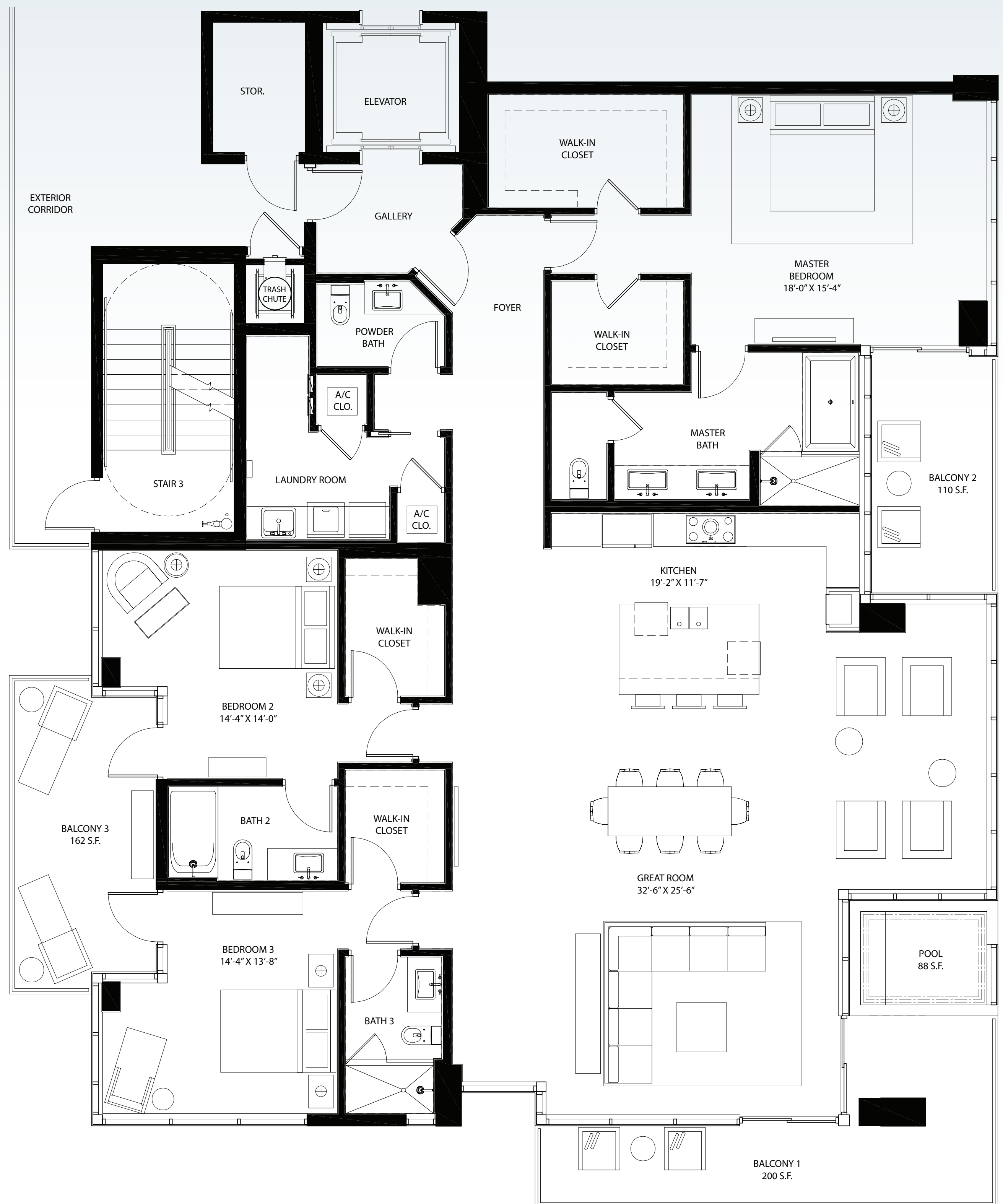
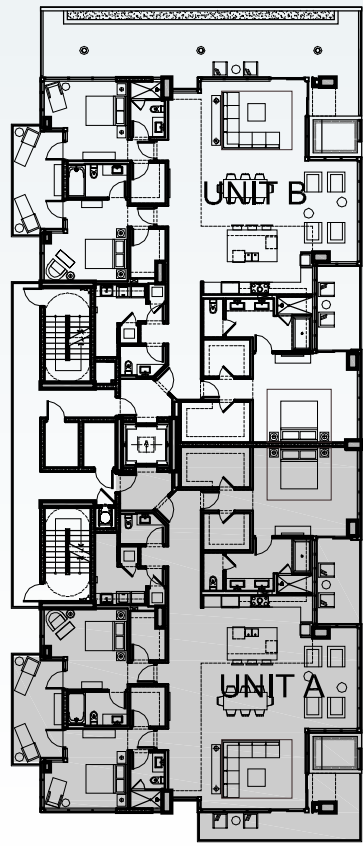


RESIDENCE A

SAGE BEACH

SOUTH TOWER

**RESIDENCE A**

3 BEDROOMS | 3.5 BATHS

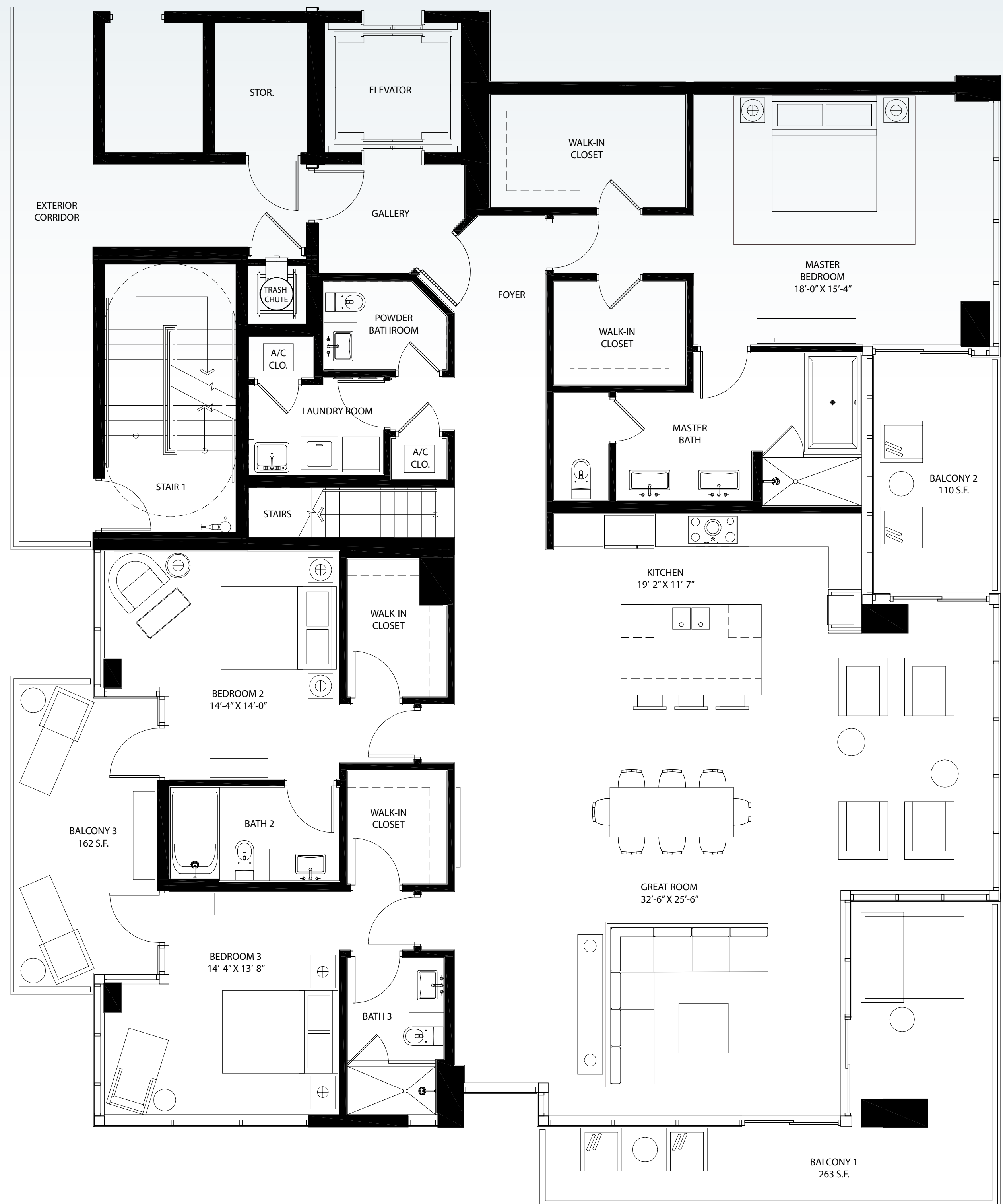
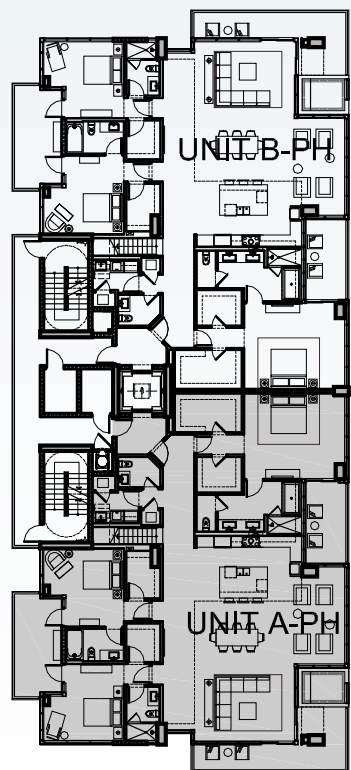
AC AREA:	2,826 SQ. FT.
BALCONY 1:	200 SQ. FT.
BALCONY 2:	110 SQ. FT.
BALCONY 3:	162 SQ. FT.
PLUNGE POOL:	63 SQ. FT.
STORAGE:	60 SQ. FT.
TOTAL:	3,421 SQ. FT.

RESIDENCE A

PENTHOUSE

SAGE BEACH

SOUTH TOWER



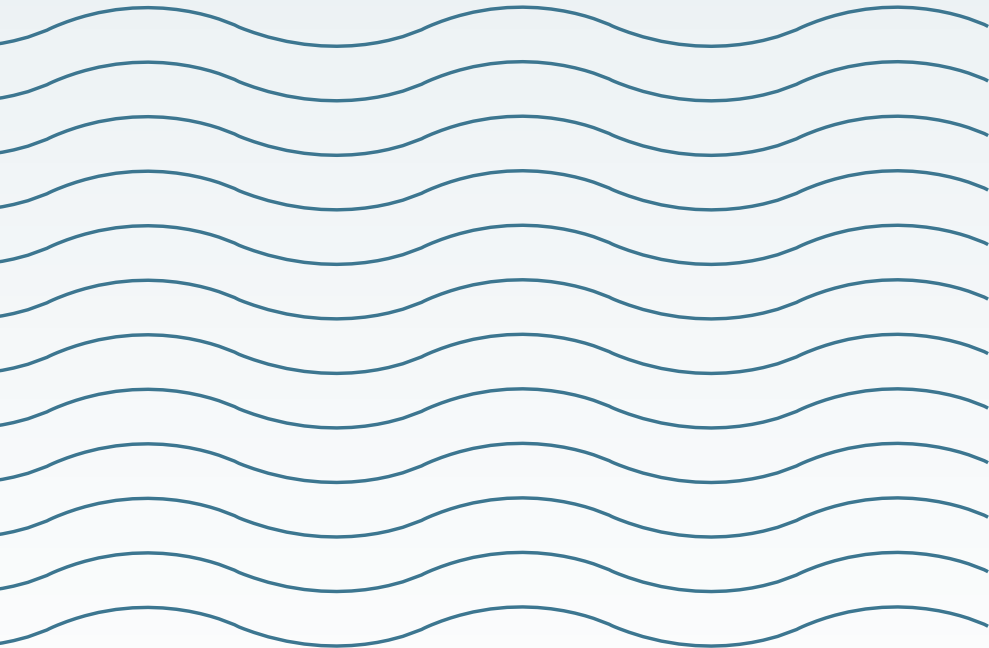
RESIDENCE A – PENTHOUSE

3 BEDROOMS | 3.5 BATHS

AC AREA:	2,826 SQ. FT.
BALCONY 1:	263 SQ. FT.
BALCONY 2:	110 SQ. FT.
BALCONY 3:	162 SQ. FT.
ROOF TERRACE:	1,687 SQ. FT.
ROOF POOL:	266 SQ. FT.
STORAGE:	60 SQ. FT.
TOTAL:	5,374 SQ. FT.

RESIDENCE A

PENTHOUSE ROOFTOP PLAN

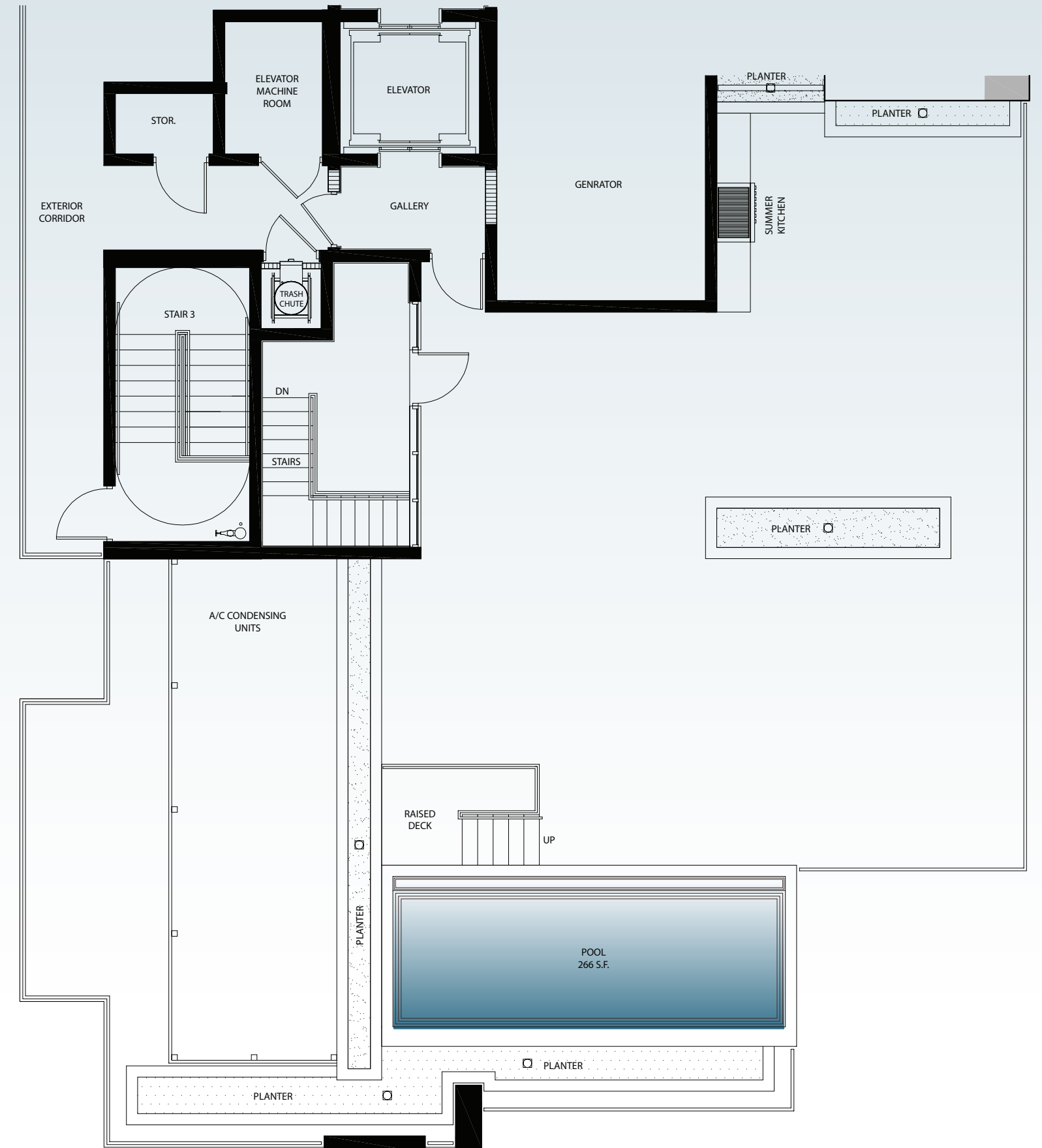


RESIDENCE A - PENTHOUSE ROOFTOP

ROOF TERRACE: 1,687 SQ. FT.

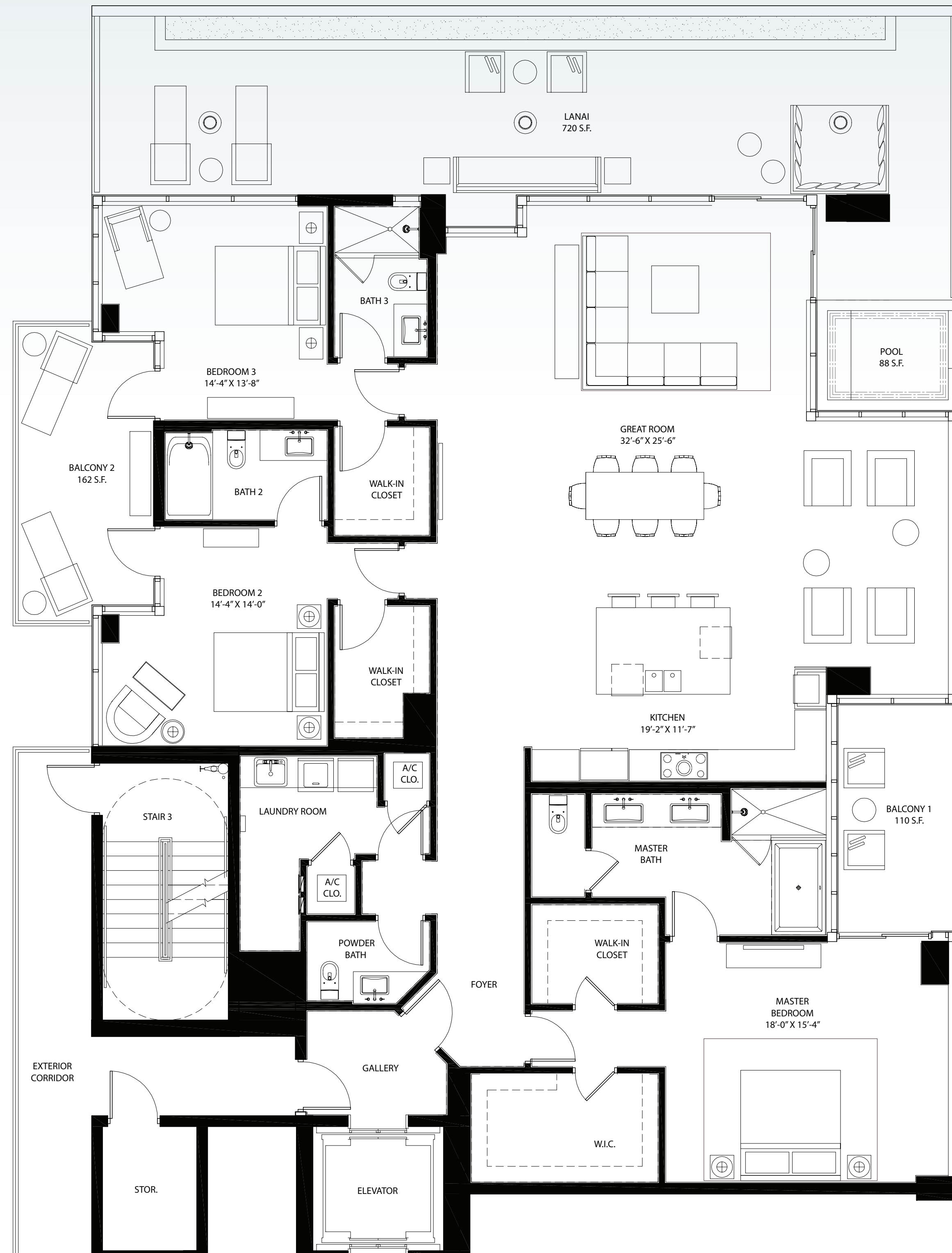
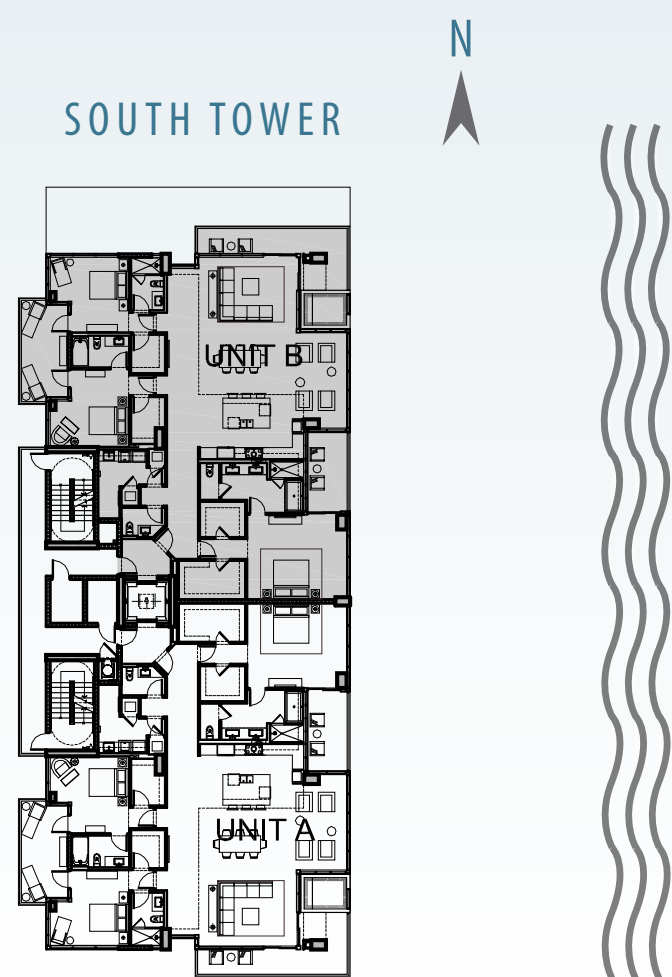
ROOF POOL: 266 SQ. FT.

TOTAL: 1,953 SQ. FT.



RESIDENCE B

SAGE BEACH



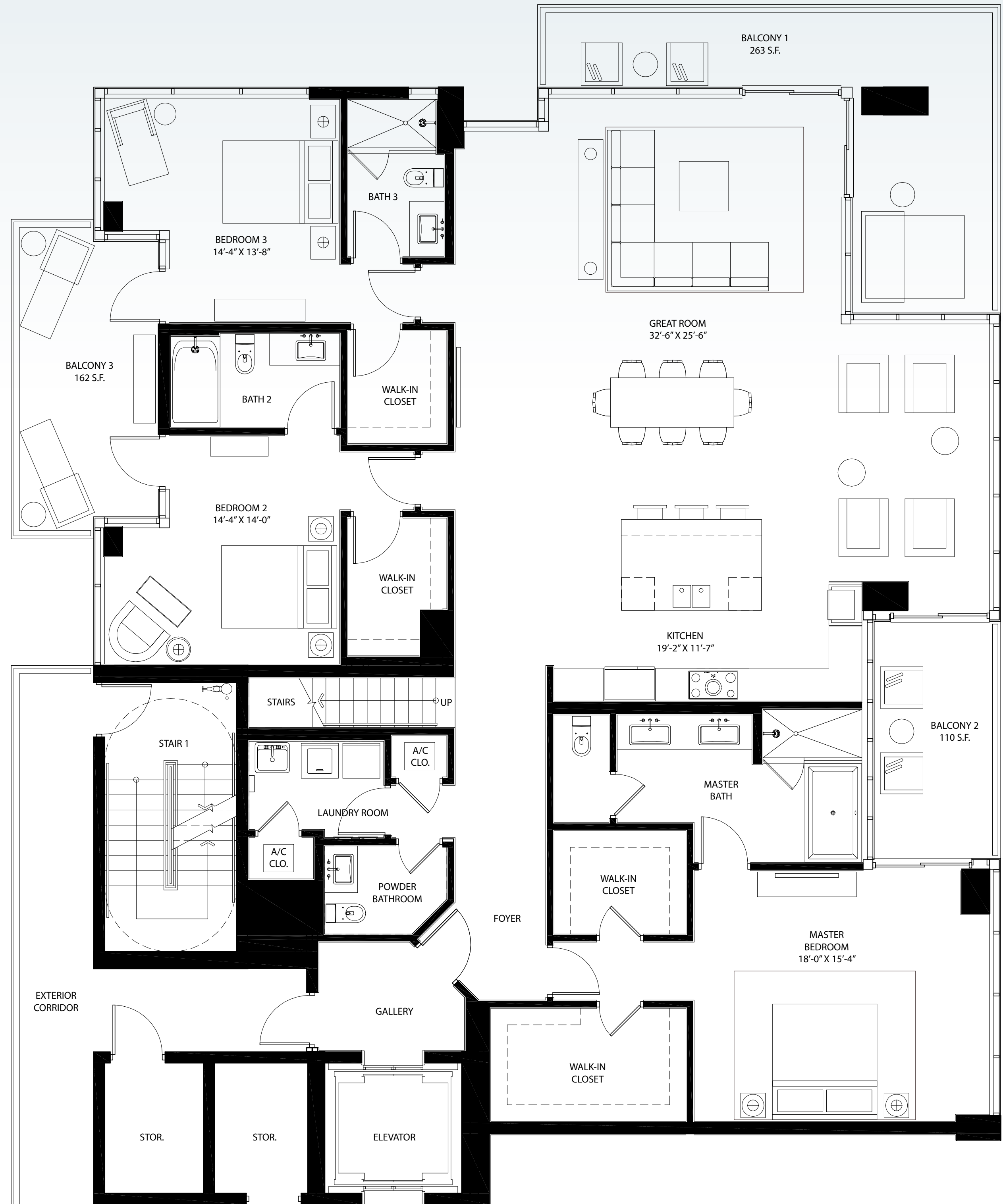
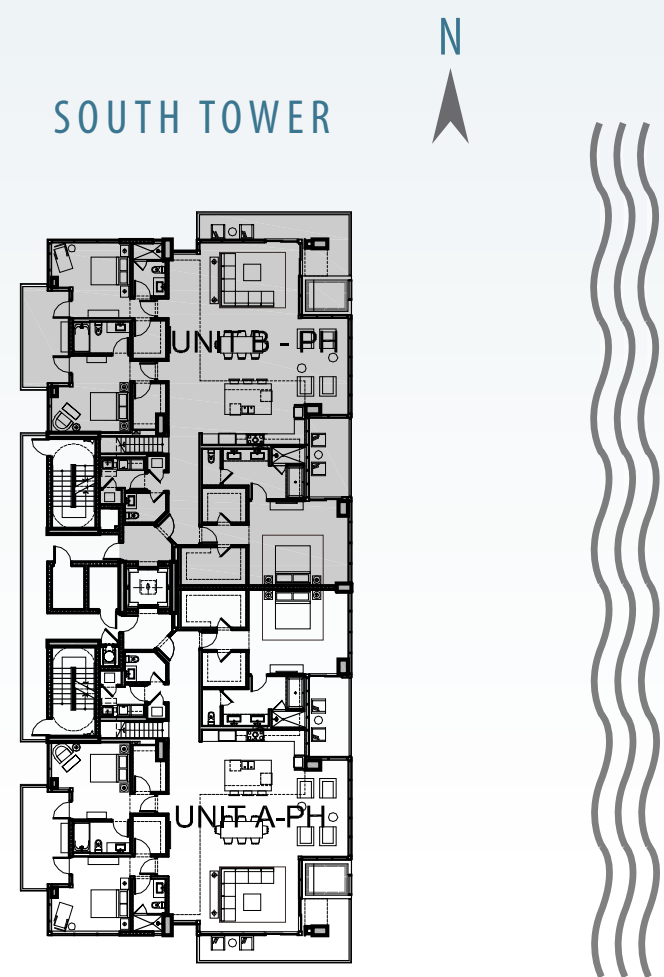
RESIDENCE B
3 BEDROOMS | 3.5 BATHS

AC AREA:	2,826 SQ. FT.
LANAI:	720 SQ. FT.
BALCONY 1:	110 SQ. FT.
BALCONY 2:	162 SQ. FT.
PLUNGE POOL:	63 SQ. FT.
STORAGE:	65 SQ. FT.
TOTAL:	3,946 SQ. FT.

RESIDENCE B

PENTHOUSE

SAGE BEACH



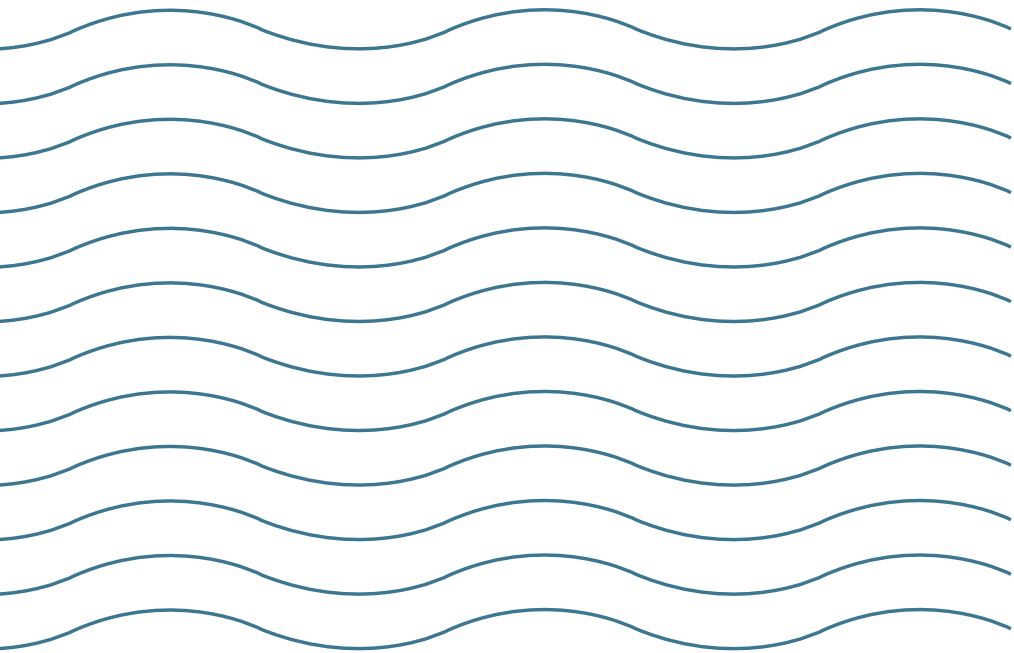
RESIDENCE B - PENTHOUSE

3 BEDROOMS | 3.5 BATHS

AC AREA:	2,826 SQ. FT.
BALCONY 1:	263 SQ. FT.
BALCONY 2:	110 SQ. FT.
BALCONY 3:	162 SQ. FT.
ROOF TERRACE:	1,687 SQ. FT.
ROOF POOL:	266 SQ. FT.
STORAGE:	65 SQ. FT.
TOTAL:	5,379 SQ. FT.

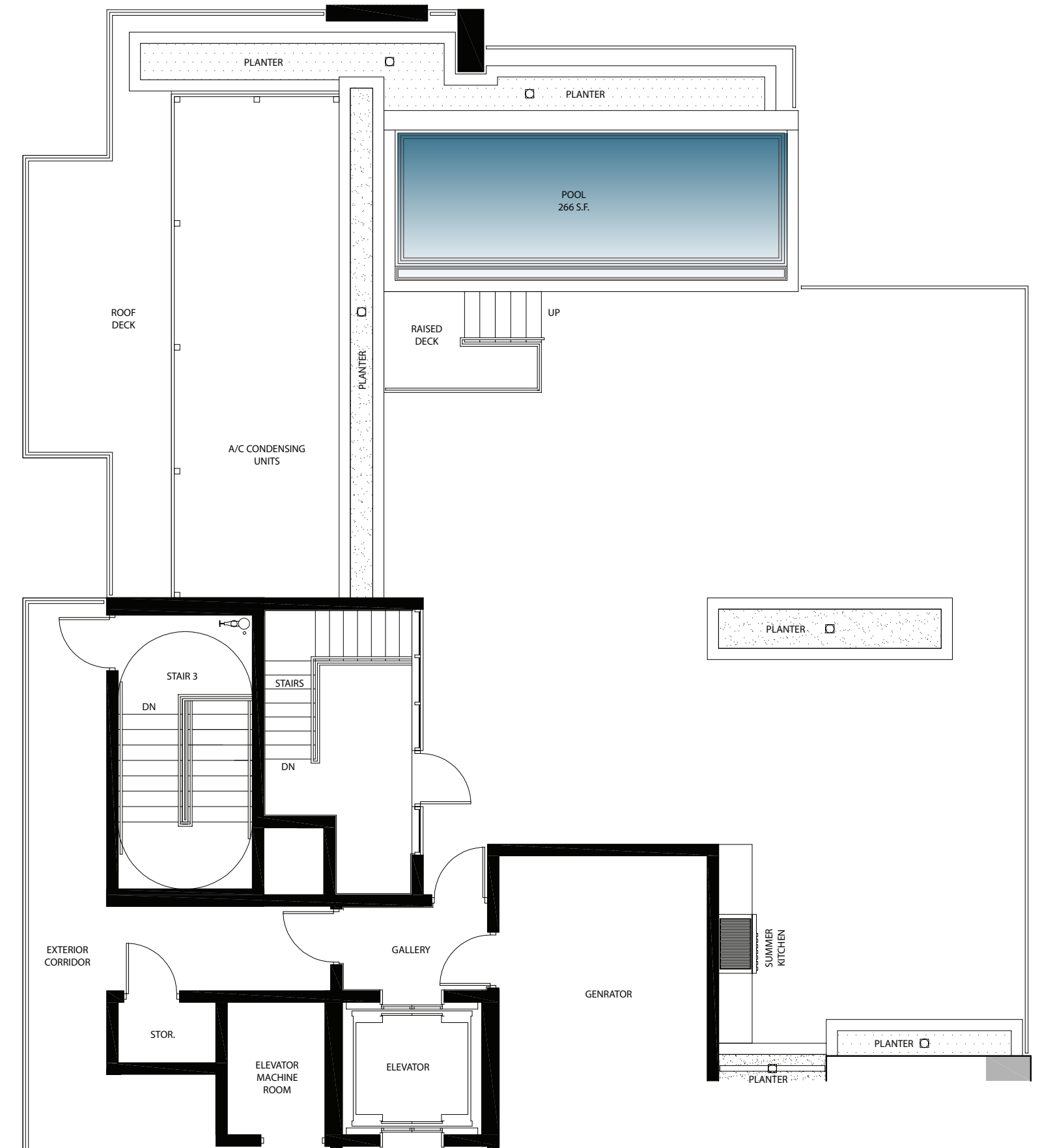
RESIDENCE B

PENTHOUSE ROOFTOP PLAN



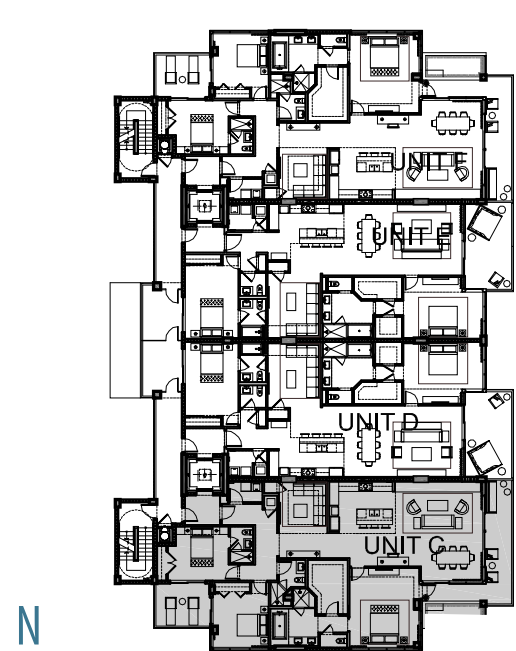
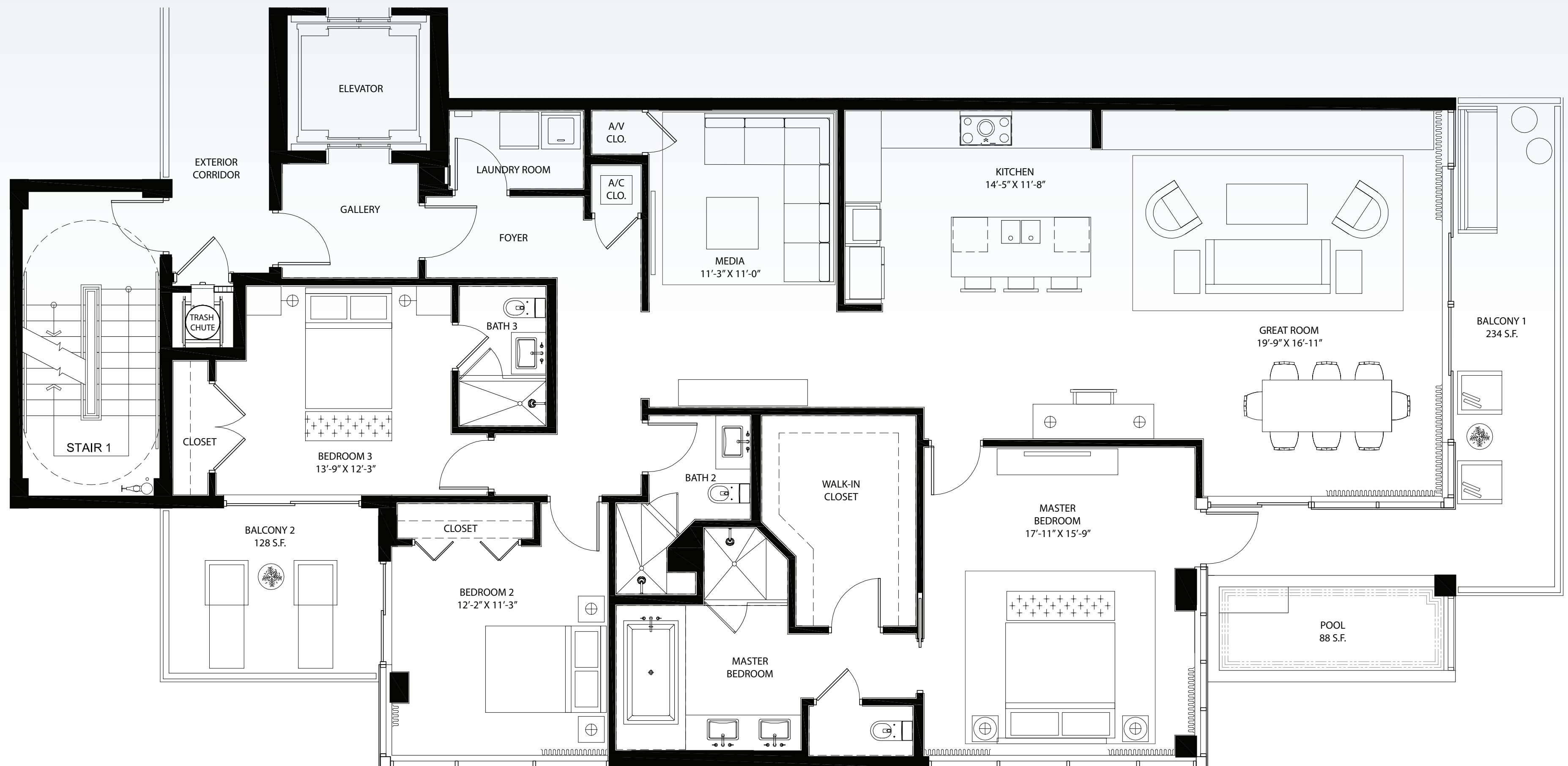
RESIDENCE B - PENTHOUSE ROOFTOP

ROOF TERRACE:	1,687 SQ. FT.
ROOF POOL:	266 SQ. FT.
TOTAL:	1,953 SQ. FT.



RESIDENCE C

SAGE BEACH



NORTH TOWER

RESIDENCE C

3 BEDROOMS PLUS MEDIA ROOM | 3 BATHS

AC AREA: 2,385 SQ. FT.

SUNRISE BALCONY: 234 SQ. FT.

SUNSET BALCONY: 128 SQ. FT.

PLUNGE POOL: 88 SQ. FT.

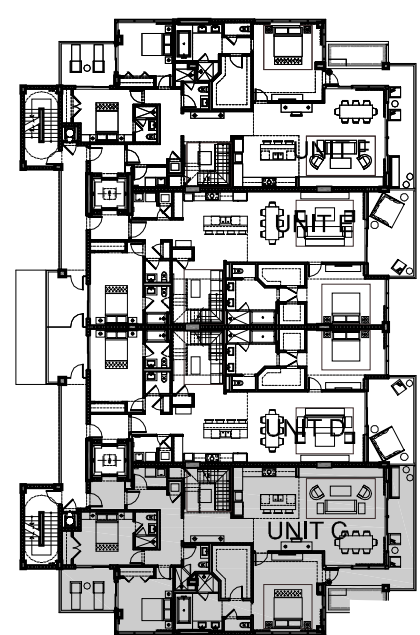
TOTAL: 2,835 SQ. FT.

Stated dimensions are measured to the exterior boundaries of the exterior walls and the centerline of interior demising walls and in fact vary from the dimensions that would be determined by using the description and definition of the "Unit" set forth in the Declaration (which generally only includes the interior airspace between the perimeter walls and excludes interior structural components). Additionally, measurements of rooms set forth on any floor plan are generally taken at the greatest points of each given room (as if the room were a perfect rectangle), without regard for any cutouts. Accordingly, the area of the actual room will typically be smaller than the product obtained by multiplying the stated length times width. For your reference, the area of the Unit, determined in accordance with this defined boundaries is 2,215 sq. ft.. All dimensions are approximate, and all floor plans and development plans are subject to change.

RESIDENCE C

PENTHOUSE

SAGE BEACH



RESIDENCE C - PENTHOUSE

3 BEDROOMS PLUS MEDIA ROOM | 3 BATHS

AC AREA: 2,385 SQ. FT.

SUNRISE BALCONY: 322 SQ. FT.

SUNSET BALCONY: 128 SQ. FT.

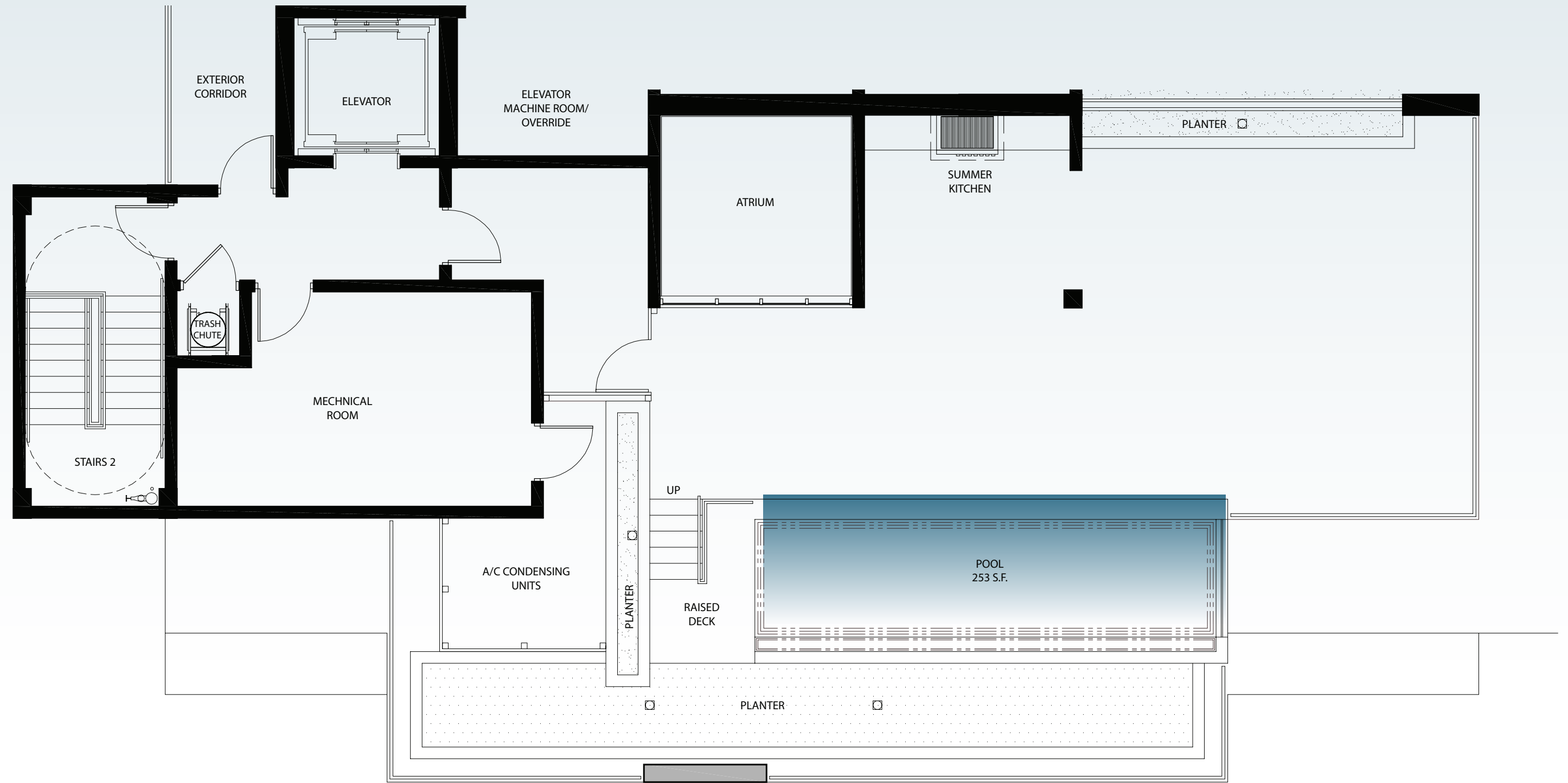
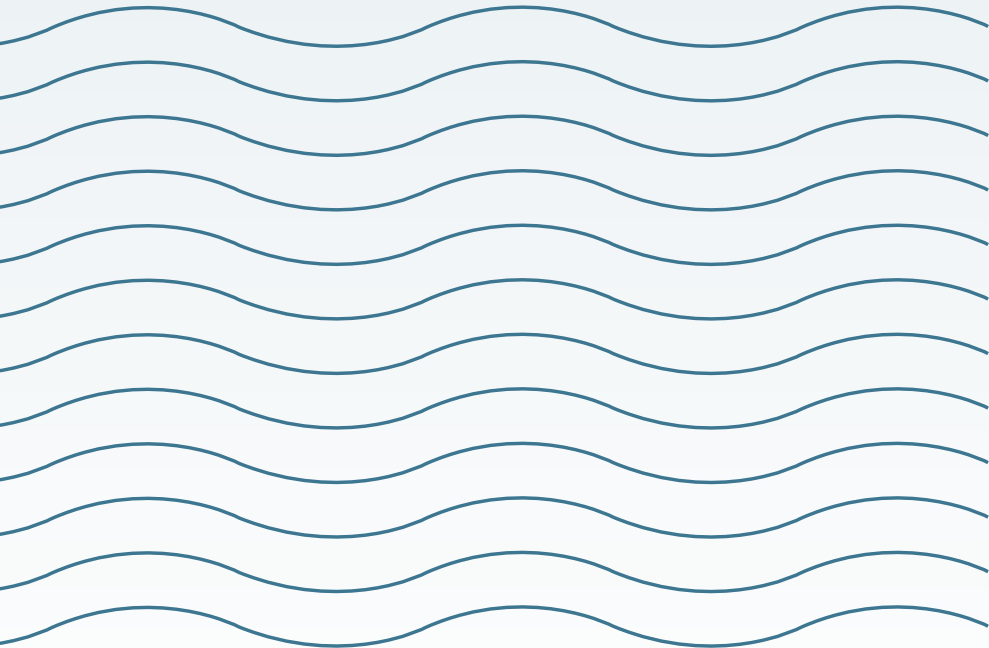
ROOF TERRACE: 1,167 SQ. FT.

ROOF POOL: 264 SQ. FT.

TOTAL: 4,266 SQ. FT.

RESIDENCE C

PENTHOUSE ROOFTOP PLAN

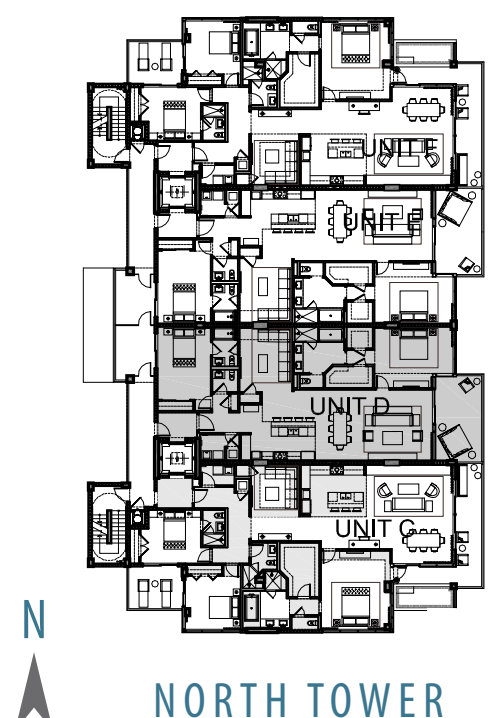


RESIDENCE C - PENTHOUSE ROOFTOP

ROOF TERRACE:	1,031 SQ. FT.
ROOF POOL:	253 SQ. FT.
TOTAL:	1,284 SQ. FT.

RESIDENCE D

SAGE BEACH

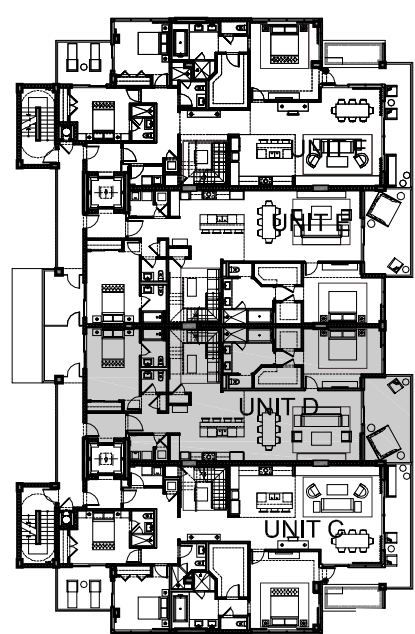


RESIDENCE D
 2 BEDROOMS PLUS MEDIA ROOM | 2.5 BATHS
 AC AREA: 2,013 SQ. FT.
 SUNRISE BALCONY: 218 SQ. FT.
 TOTAL: 2,231 SQ. FT.

Stated dimensions are measured to the exterior boundaries of the exterior walls and the centerline of interior demising walls and in fact vary from the dimensions that would be determined by using the description and definition of the "Unit" set forth in the Declaration (which generally only includes the interior airspace between the perimeter walls and excludes interior structural components). Additionally, measurements of rooms set forth on any floor plan are generally taken at the greatest points of each given room (as if the room were a perfect rectangle), without regard for any cutouts. Accordingly, the area of the actual room will typically be smaller than the product obtained by multiplying the stated length times width. For your reference, the area of the Unit, determined in accordance with this defined boundaries is 1,889 sq. ft.. All dimensions are approximate, and all floor plans and development plans are subject to change.

RESIDENCE D PENTHOUSE

SAGE BEACH



NORTH TOWER

RESIDENCE D - PENTHOUSE

3 BEDROOMS PLUS MEDIA ROOM | 3 BATHS

AC AREA: 2,013 SQ. FT.

SUNRISE BALCONY: 218 SQ. FT.

ROOF TERRACE: 1,246 SQ. FT.

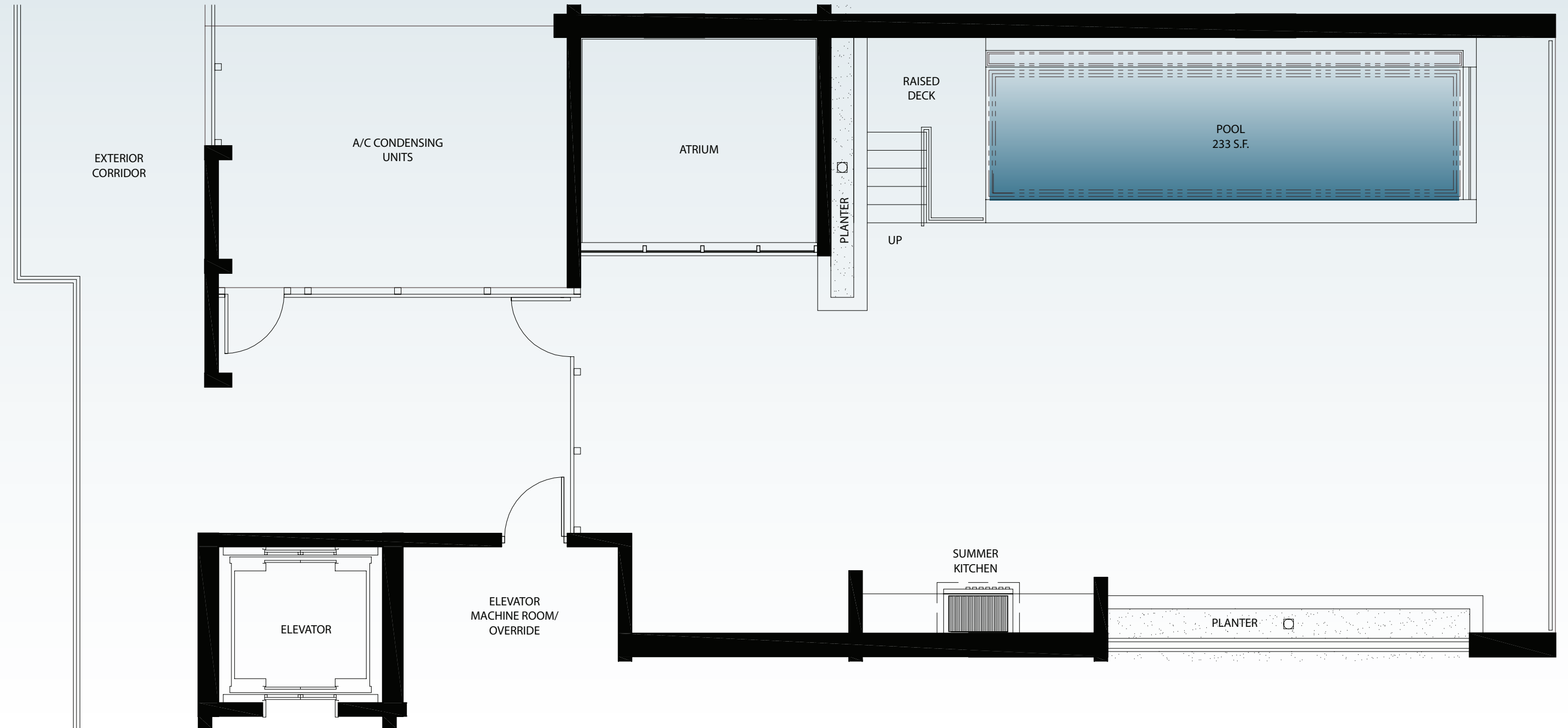
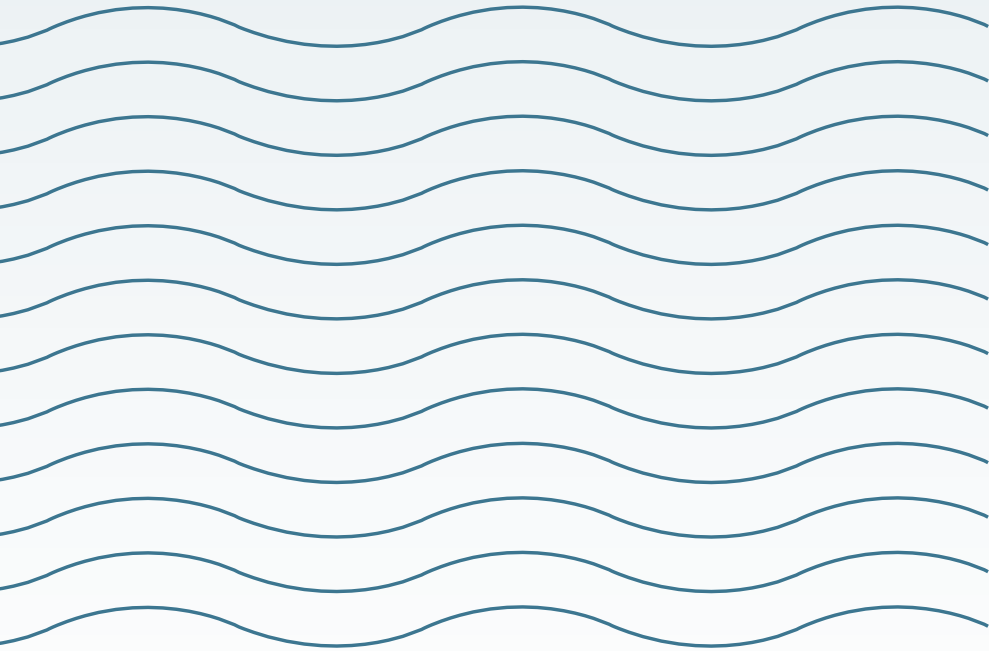
ROOF POOL: 365 SQ. FT.

TOTAL: 3,842 SQ. FT.

Stated dimensions are measured to the exterior boundaries of the exterior walls and the centerline of interior demising walls and in fact vary from the dimensions that would be determined by using the description and definition of the "Unit" set forth in the Declaration (which generally only includes the interior airspace between the perimeter walls and excludes interior structural components). Additionally, measurements of rooms set forth on any floor plan are generally taken at the greatest points of each given room (as if the room were a perfect rectangle), without regard for any cutouts. Accordingly, the area of the actual room will typically be smaller than the product obtained by multiplying the stated length times width. For your reference, the area of the Unit, determined in accordance with this defined boundaries is 1,889 sq. ft.. All dimensions are approximate, and all floor plans and development plans are subject to change.

RESIDENCE D

PENTHOUSE ROOFTOP PLAN

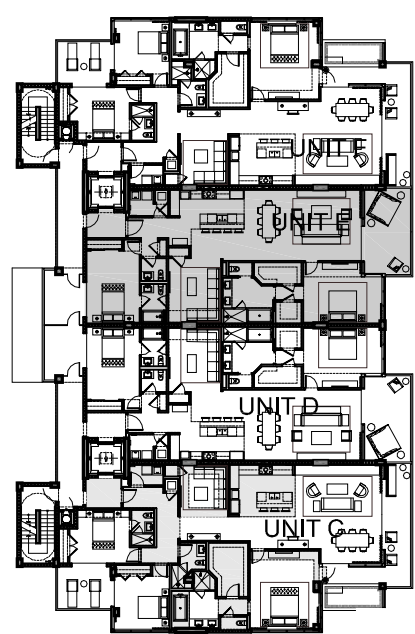
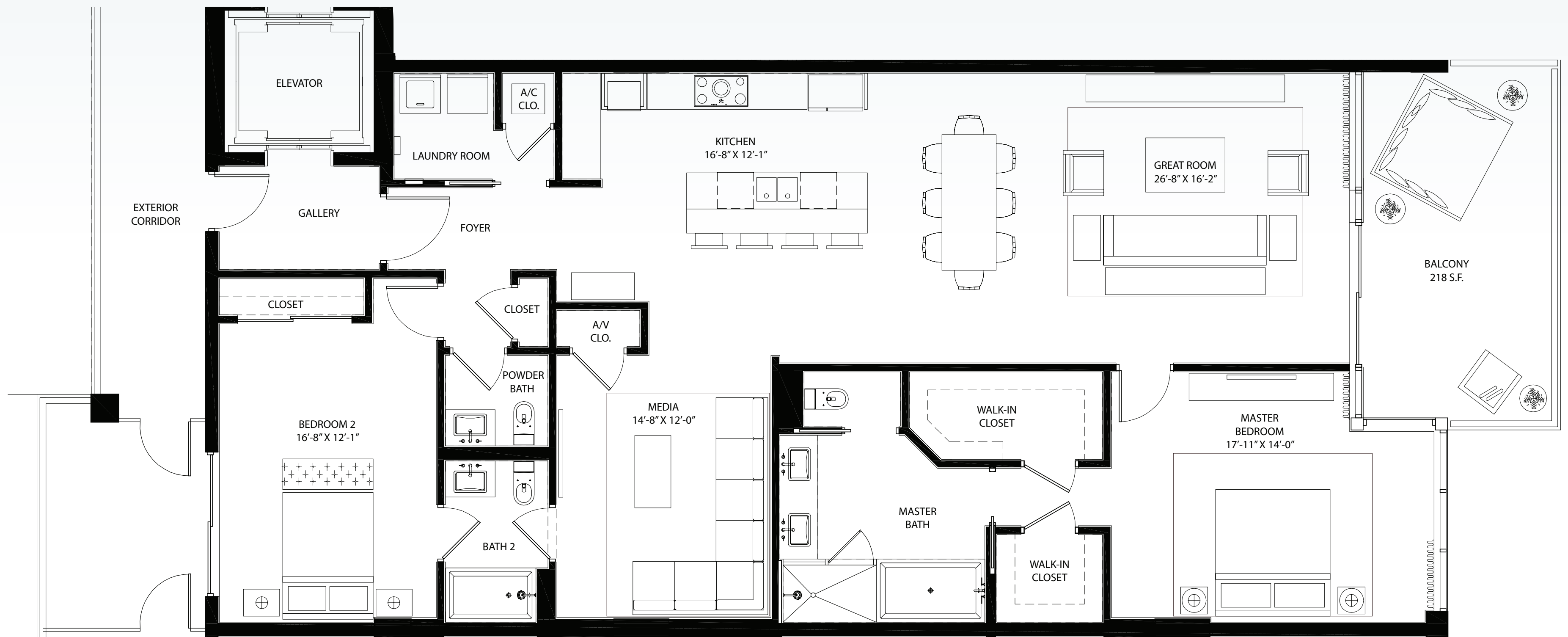


RESIDENCE D - PENTHOUSE ROOFTOP

ROOF TERRACE:	1,131 SQ. FT.
ROOF POOL:	233 SQ. FT.
TOTAL:	1,364 SQ. FT.

RESIDENCE E

SAGE BEACH



NORTH TOWER

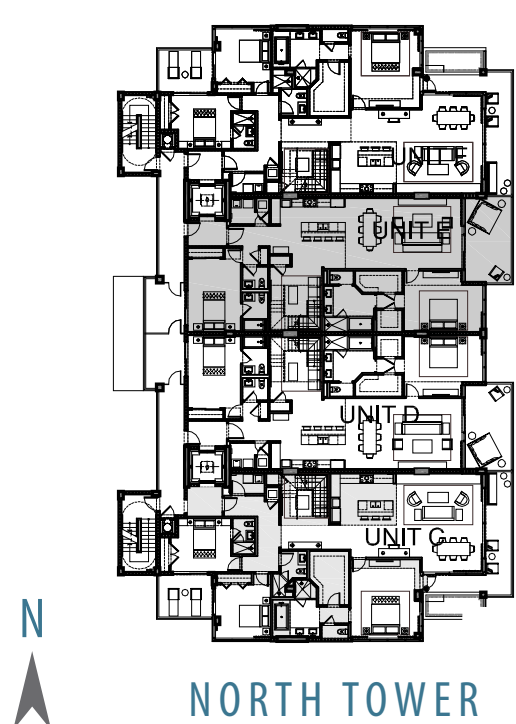


RESIDENCE E
 2 BEDROOMS PLUS MEDIA ROOM | 2.5 BATHS
 AC AREA: 2,013 SQ. FT.
 SUNRISE BALCONY: 218 SQ. FT.
 TOTAL: 2,231 SQ. FT.

Stated dimensions are measured to the exterior boundaries of the exterior walls and the centerline of interior demising walls and in fact vary from the dimensions that would be determined by using the description and definition of the "Unit" set forth in the Declaration (which generally only includes the interior airspace between the perimeter walls and excludes interior structural components). Additionally, measurements of rooms set forth on any floor plan are generally taken at the greatest points of each given room (as if the room were a perfect rectangle), without regard for any cutouts. Accordingly, the area of the actual room will typically be smaller than the product obtained by multiplying the stated length times width. For your reference, the area of the Unit, determined in accordance with this defined boundaries is 1,889 sq. ft.. All dimensions are approximate, and all floor plans and development plans are subject to change.

RESIDENCE E PENTHOUSE

SAGE BEACH



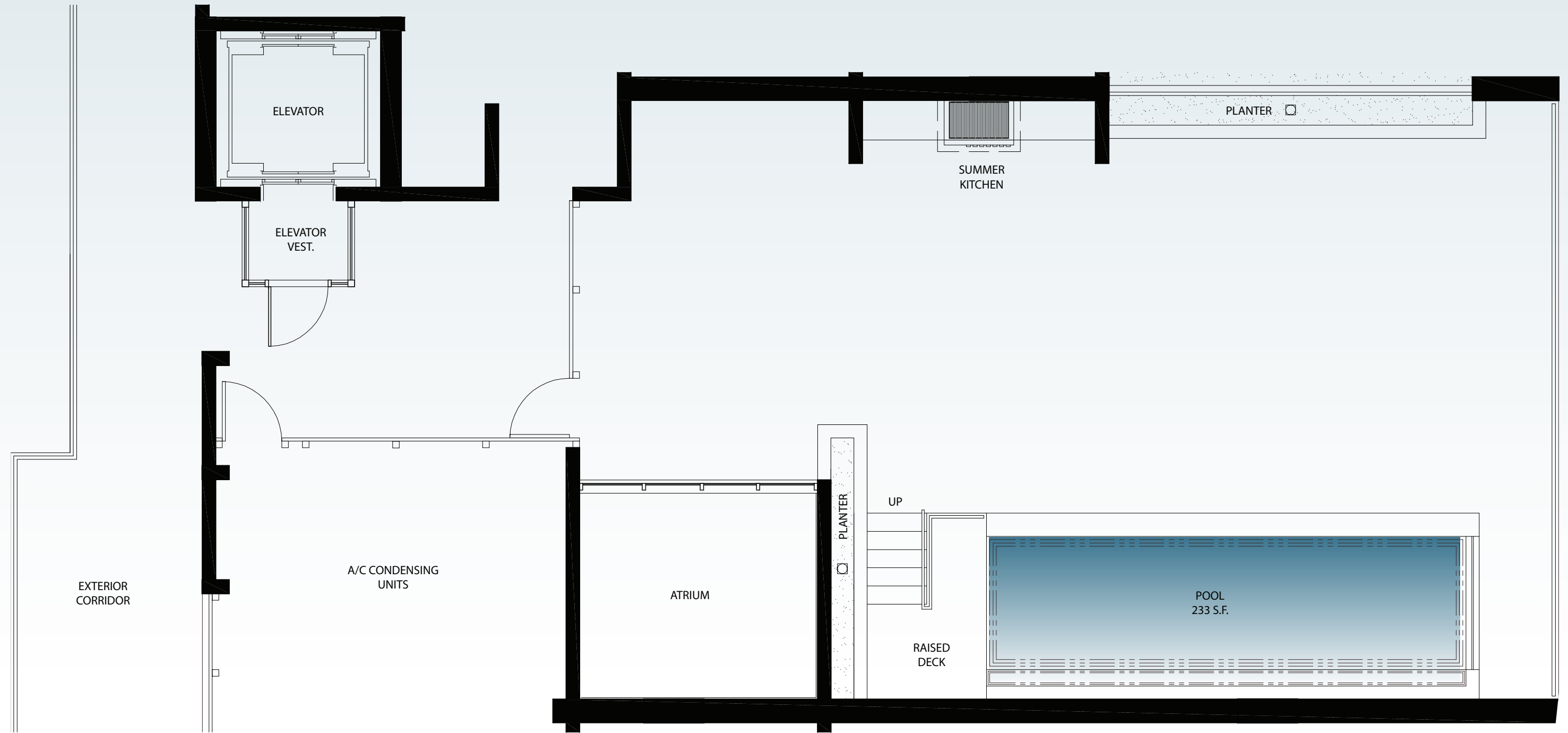
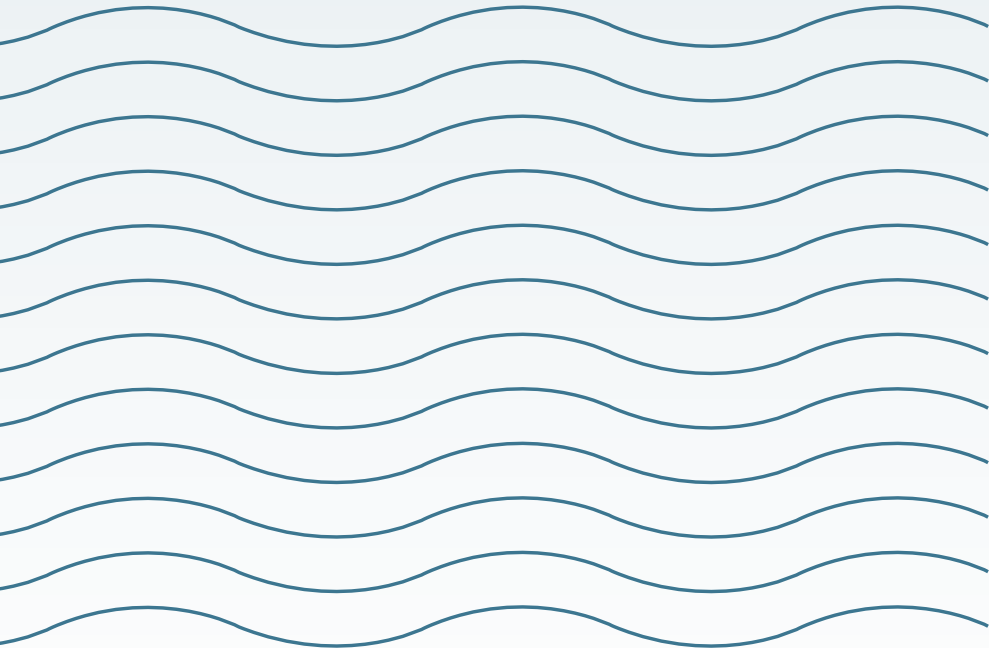
RESIDENCE E - PENTHOUSE

2 BEDROOMS PLUS MEDIA ROOM 2.5 BATHS	
AC AREA:	2,013 SQ. FT.
SUNRISE BALCONY:	218 SQ. FT.
ROOF TERRACE:	1,246 SQ. FT.
ROOF POOL:	365 SQ. FT.
TOTAL:	3,842 SQ. FT.

Stated dimensions are measured to the exterior boundaries of the exterior walls and the centerline of interior demising walls and in fact vary from the dimensions that would be determined by using the description and definition of the "Unit" set forth in the Declaration (which generally only includes the interior airspace between the perimeter walls and excludes interior structural components). Additionally, measurements of rooms set forth on any floor plan are generally taken at the greatest points of each given room (as if the room were a perfect rectangle), without regard for any cutouts. Accordingly, the area of the actual room will typically be smaller than the product obtained by multiplying the stated length times width. For your reference, the area of the Unit, determined in accordance with this defined boundaries is 1,889 sq. ft.. All dimensions are approximate, and all floor plans and development plans are subject to change.

RESIDENCE E

PENTHOUSE ROOFTOP PLAN

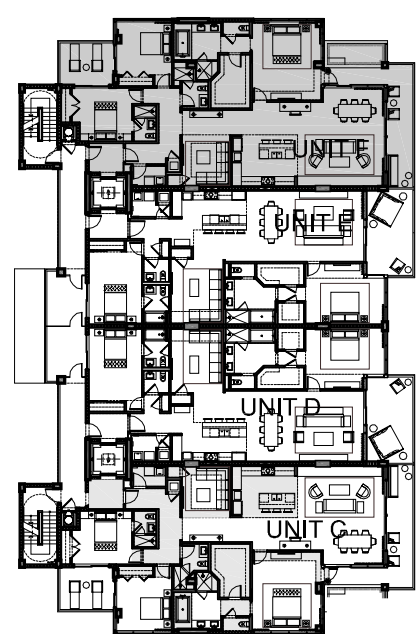


RESIDENCE E - PENTHOUSE ROOFTOP

ROOF TERRACE:	1,131 SQ. FT.
ROOF POOL:	233 SQ. FT.
TOTAL:	1,364 SQ. FT.

RESIDENCE F

SAGE BEACH



NORTH TOWER

RESIDENCE F

3 BEDROOMS PLUS MEDIA ROOM | 3 BATHS

AC AREA: 2,385 SQ. FT.

SUNRISE BALCONY: 234 SQ. FT.

SUNSET BALCONY: 128 SQ. FT.

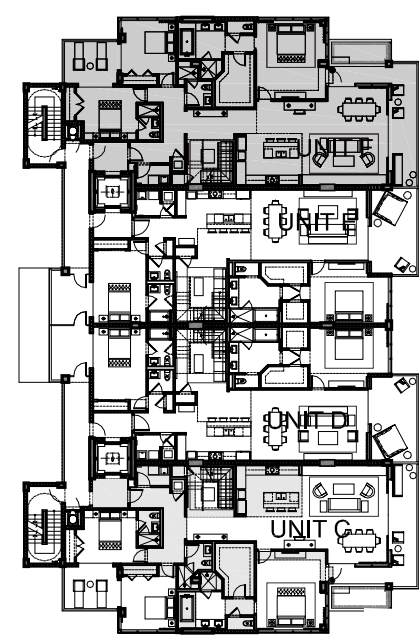
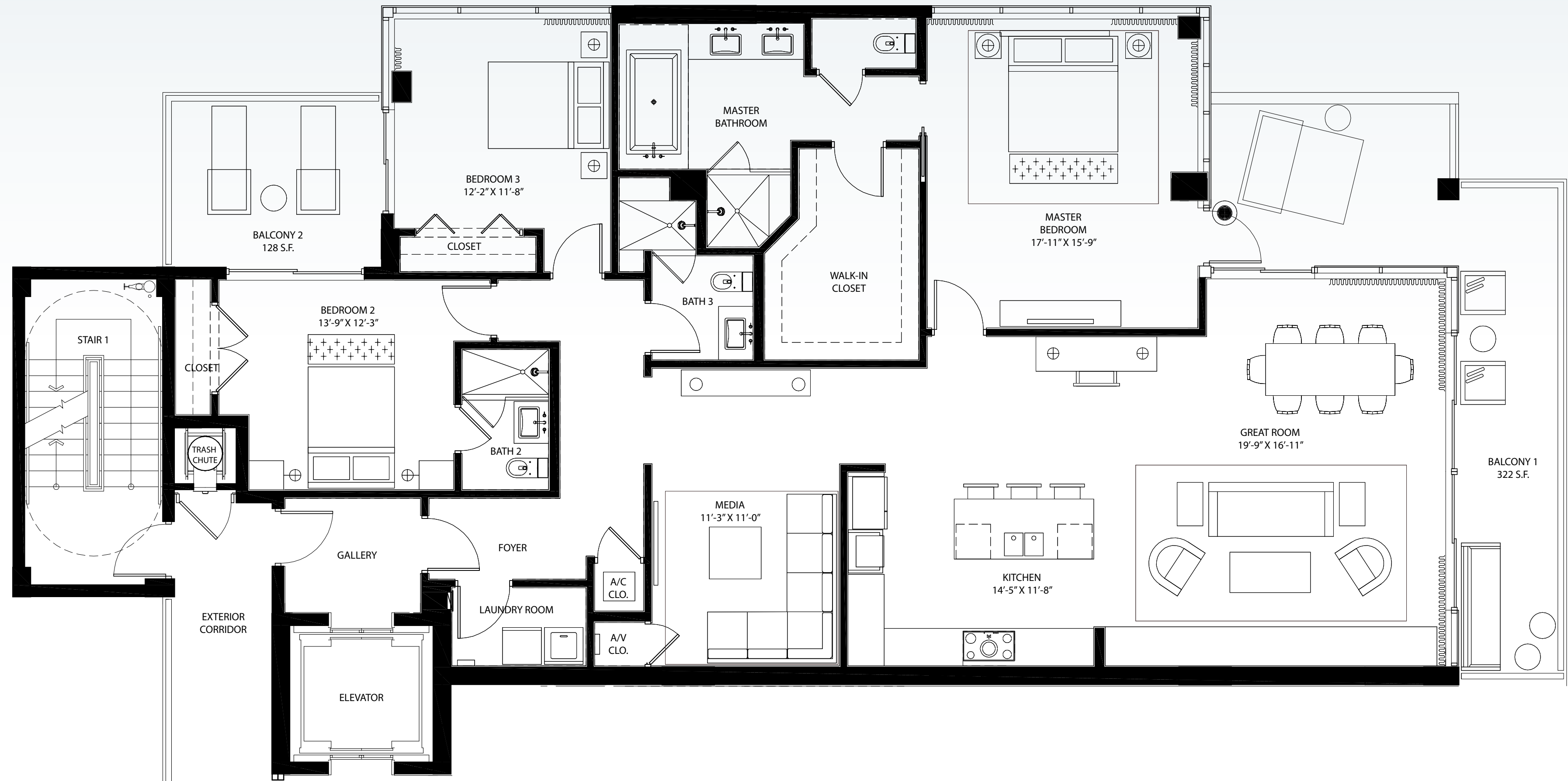
PLUNGE POOL: 88 SQ. FT.

TOTAL: 2,835 SQ. FT.

Stated dimensions are measured to the exterior boundaries of the exterior walls and the centerline of interior demising walls and in fact vary from the dimensions that would be determined by using the description and definition of the "Unit" set forth in the Declaration (which generally only includes the interior airspace between the perimeter walls and excludes interior structural components). Additionally, measurements of rooms set forth on any floor plan are generally taken at the greatest points of each given room (as if the room were a perfect rectangle), without regard for any cutouts. Accordingly, the area of the actual room will typically be smaller than the product obtained by multiplying the stated length times width. For your reference, the area of the Unit, determined in accordance with this defined boundaries is 2,215 sq. ft.. All dimensions are approximate, and all floor plans and development plans are subject to change.

RESIDENCE F PENTHOUSE

SAGE BEACH



NORTH TOWER

RESIDENCE F - PENTHOUSE

3 BEDROOMS PLUS MEDIA ROOM | 3 BATHS

AC AREA: 2,383 SQ. FT.

SUNRISE BALCONY: 234 SQ. FT.

SUNSET BALCONY: 128 SQ. FT.

PLUNGE POOL: 88 SQ. FT.

ROOF TERRACE: 1,031 SQ. FT.

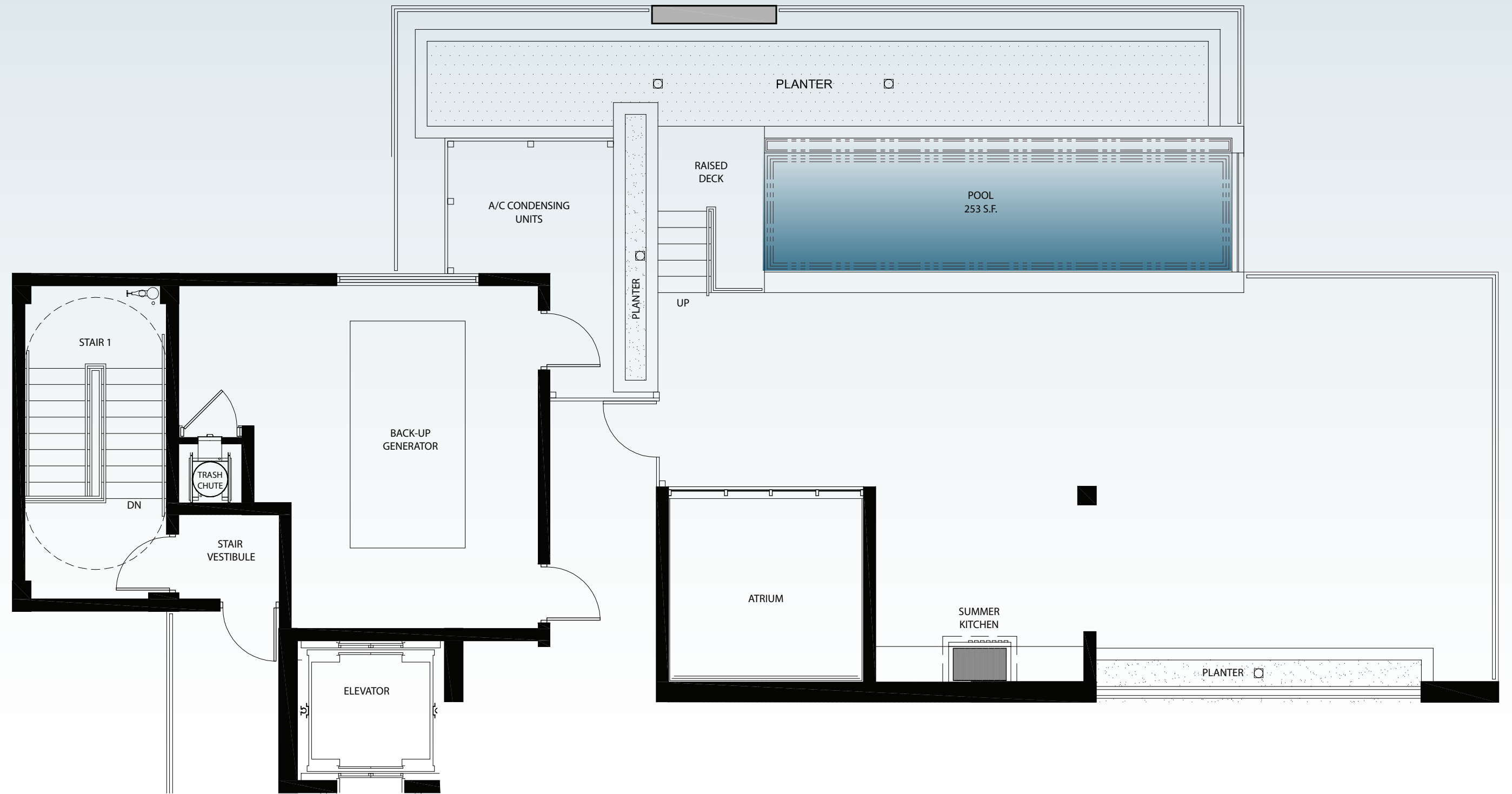
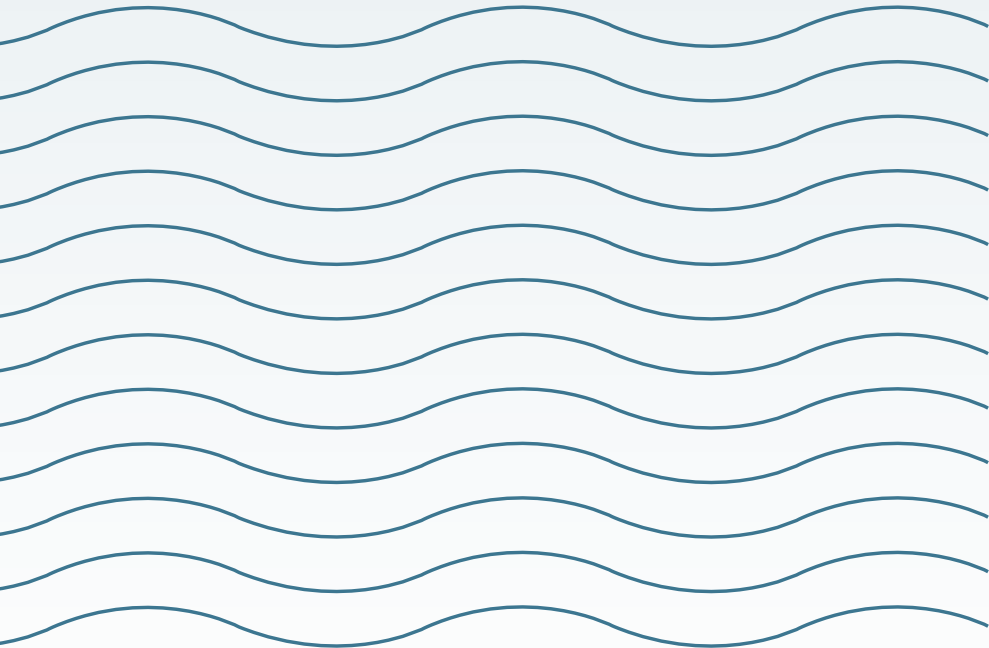
ROOF POOL: 253 SQ. FT.

TOTAL: 4,117 SQ. FT.

Stated dimensions are measured to the exterior boundaries of the exterior walls and the centerline of interior demising walls and in fact vary from the dimensions that would be determined by using the description and definition of the "Unit" set forth in the Declaration (which generally only includes the interior airspace between the perimeter walls and excludes interior structural components). Additionally, measurements of rooms set forth on any floor plan are generally taken at the greatest points of each given room (as if the room were a perfect rectangle), without regard for any cutouts. Accordingly, the area of the actual room will typically be smaller than the product obtained by multiplying the stated length times width. For your reference, the area of the Unit, determined in accordance with this defined boundaries is 2,215 sq. ft.. All dimensions are approximate, and all floor plans and development plans are subject to change.

RESIDENCE F

PENTHOUSE ROOFTOP PLAN



RESIDENCE F - PENTHOUSE ROOFTOP

ROOF TERRACE:	1,031 SQ. FT.
ROOF POOL:	253 SQ. FT.
TOTAL:	1,284 SQ. FT.