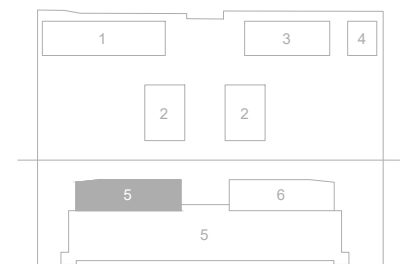


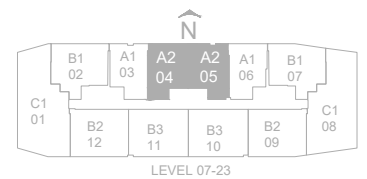
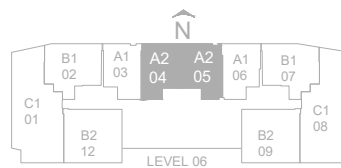
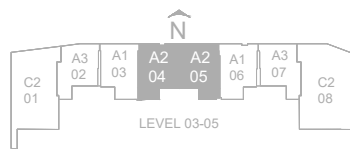
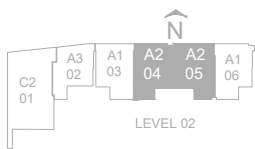
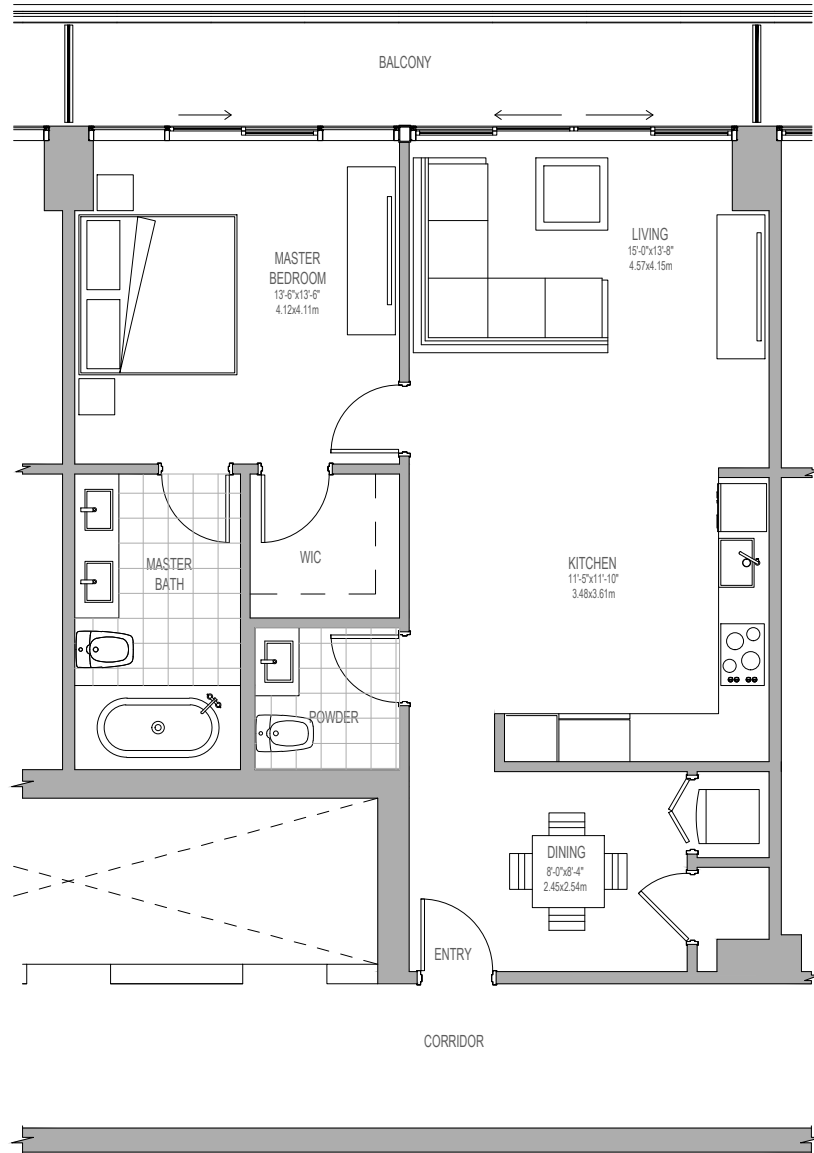
UNIT A1'

1 BEDROOM / 1.5 BATHS

INDOOR LIVING AREA 894 sq ft 83.05 sq m
 OUTDOOR LIVING AREA 143 sq ft 13.91 sq m



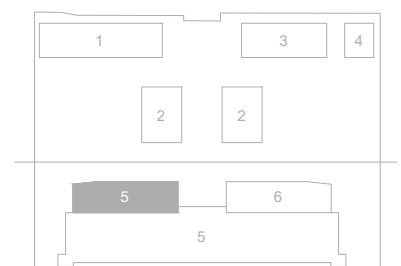
KEY PLAN



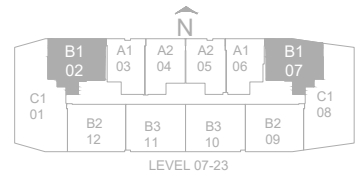
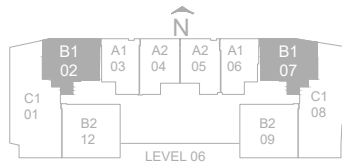
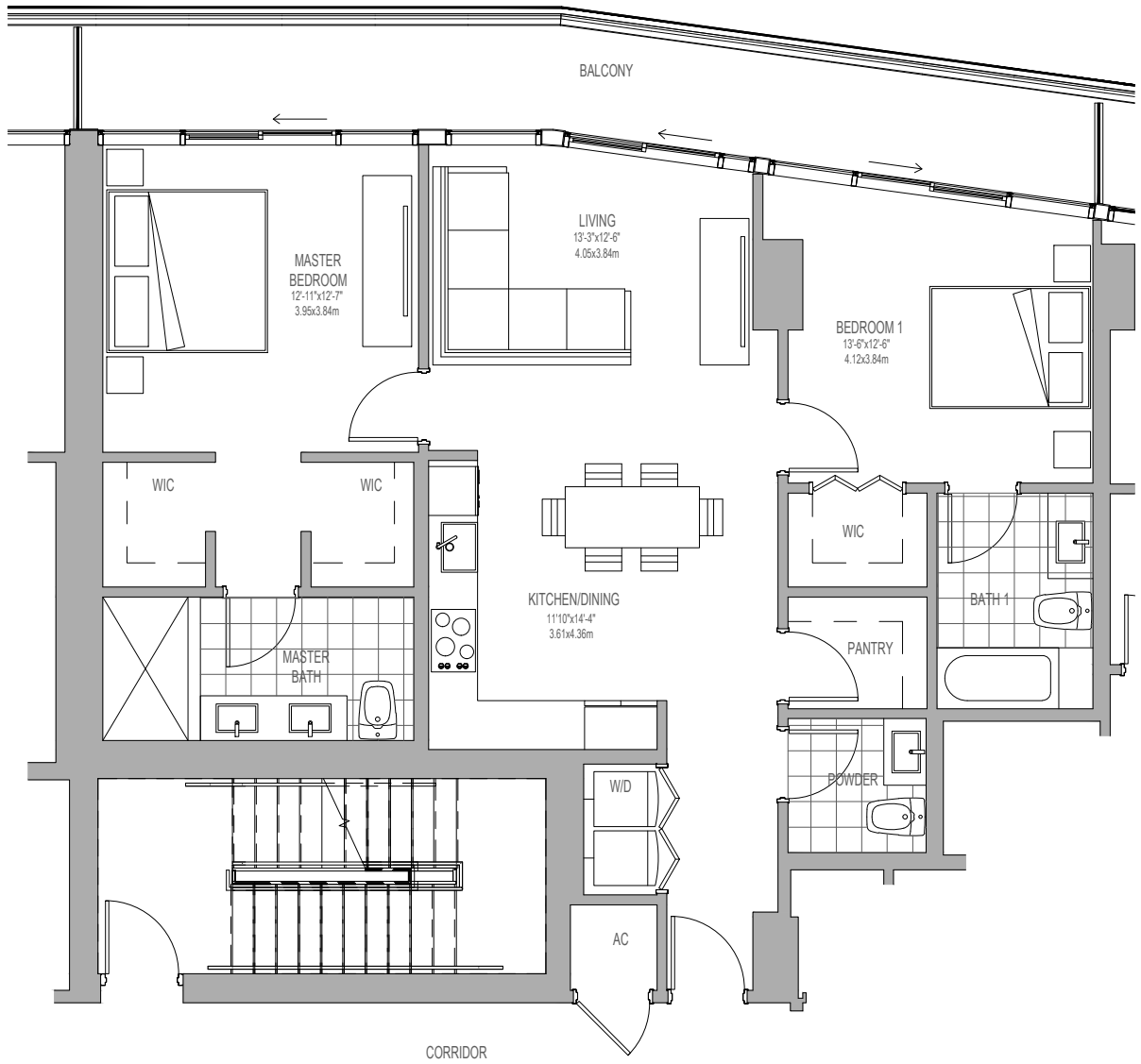
UNIT A2'

1 BEDROOM / 1.5 BATHS

INDOOR LIVING AREA 937 sq ft 87.0 sq m
 OUTDOOR LIVING AREA 143 sq ft 13.3 sq m



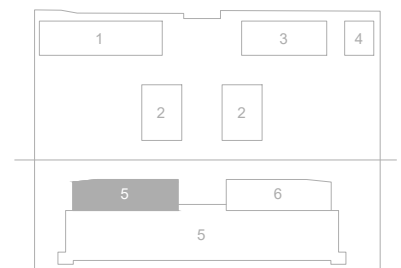
KEY PLAN



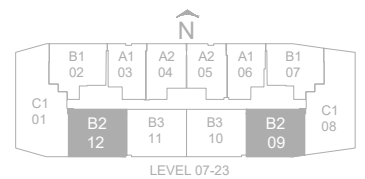
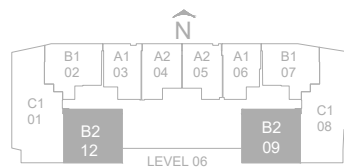
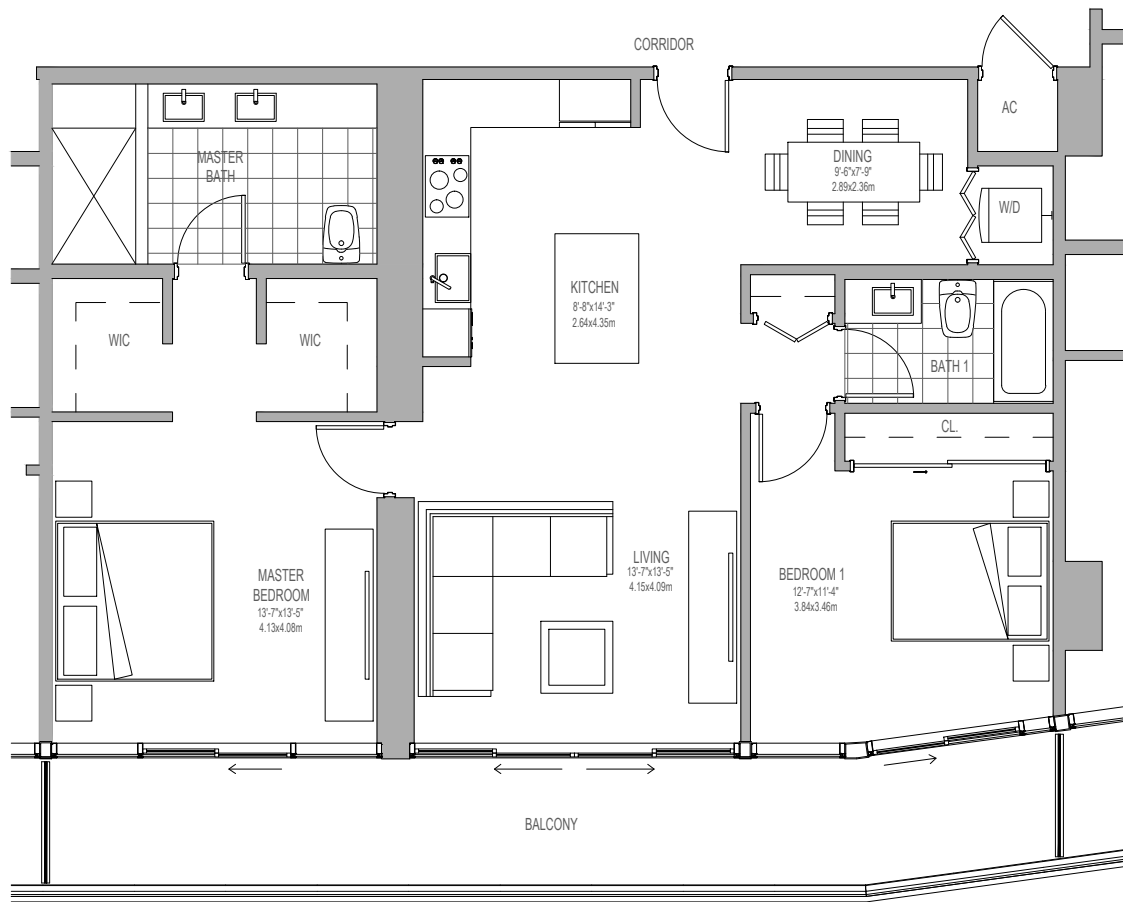
UNIT B1'

2 BEDROOM / 2.5 BATHS

INDOOR LIVING AREA 1162 sq ft 107.95 sq m
 OUTDOOR LIVING AREA 209 sq ft 19.42 sq m



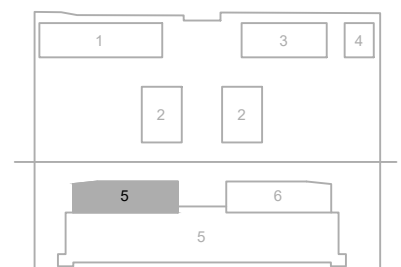
KEY PLAN



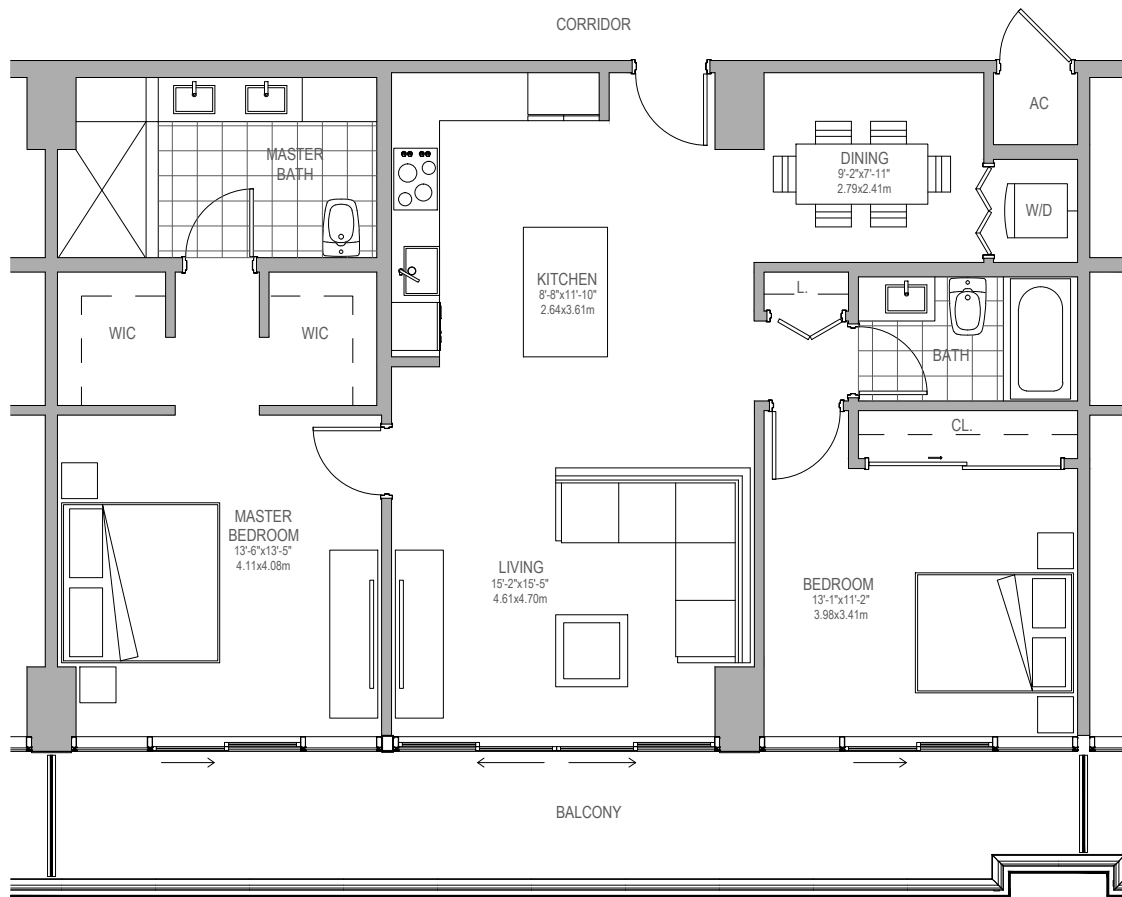
UNIT B2'

2 BEDROOM / 2 BATHS

INDOOR LIVING AREA 1199 sq ft 111.4 sq m
 OUTDOOR LIVING AREA 254 sq ft 23.6 sq m



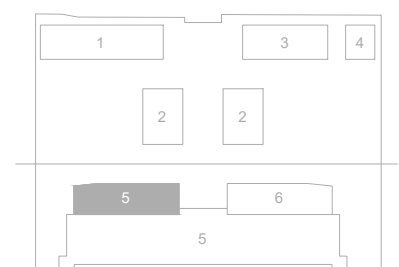
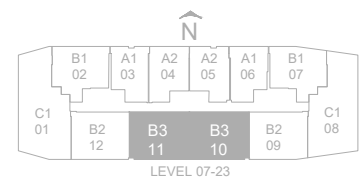
KEY PLAN

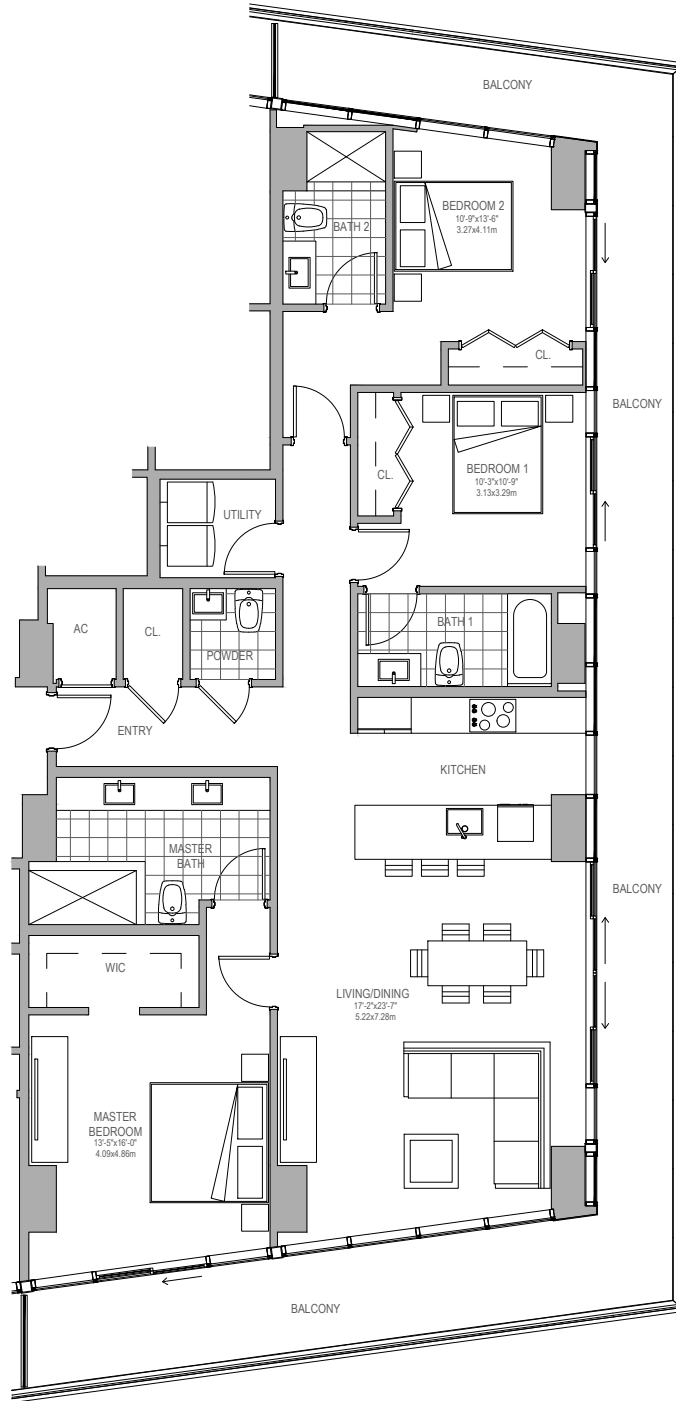


UNIT B3'

2 BEDROOM / 2 BATHS

INDOOR LIVING AREA 1226 sq ft 113.9 sq m
 OUTDOOR LIVING AREA 254 sq ft 23.6 sq m

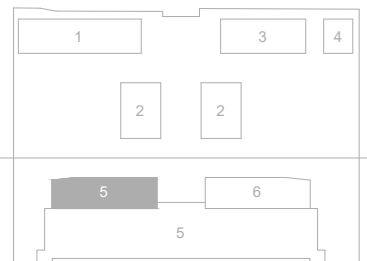
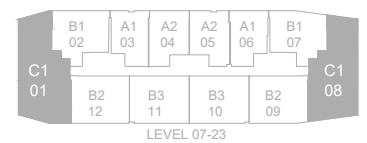
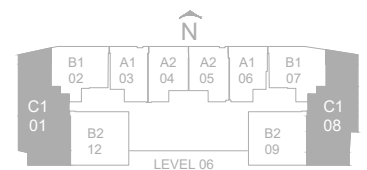




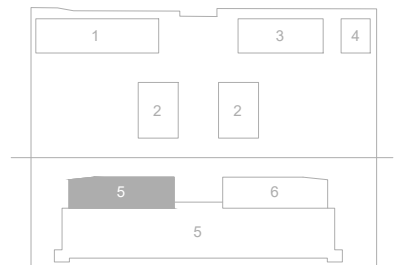
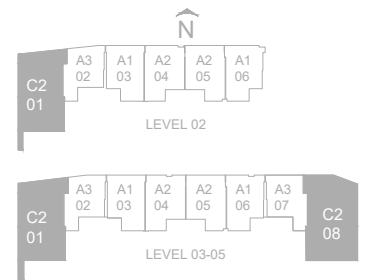
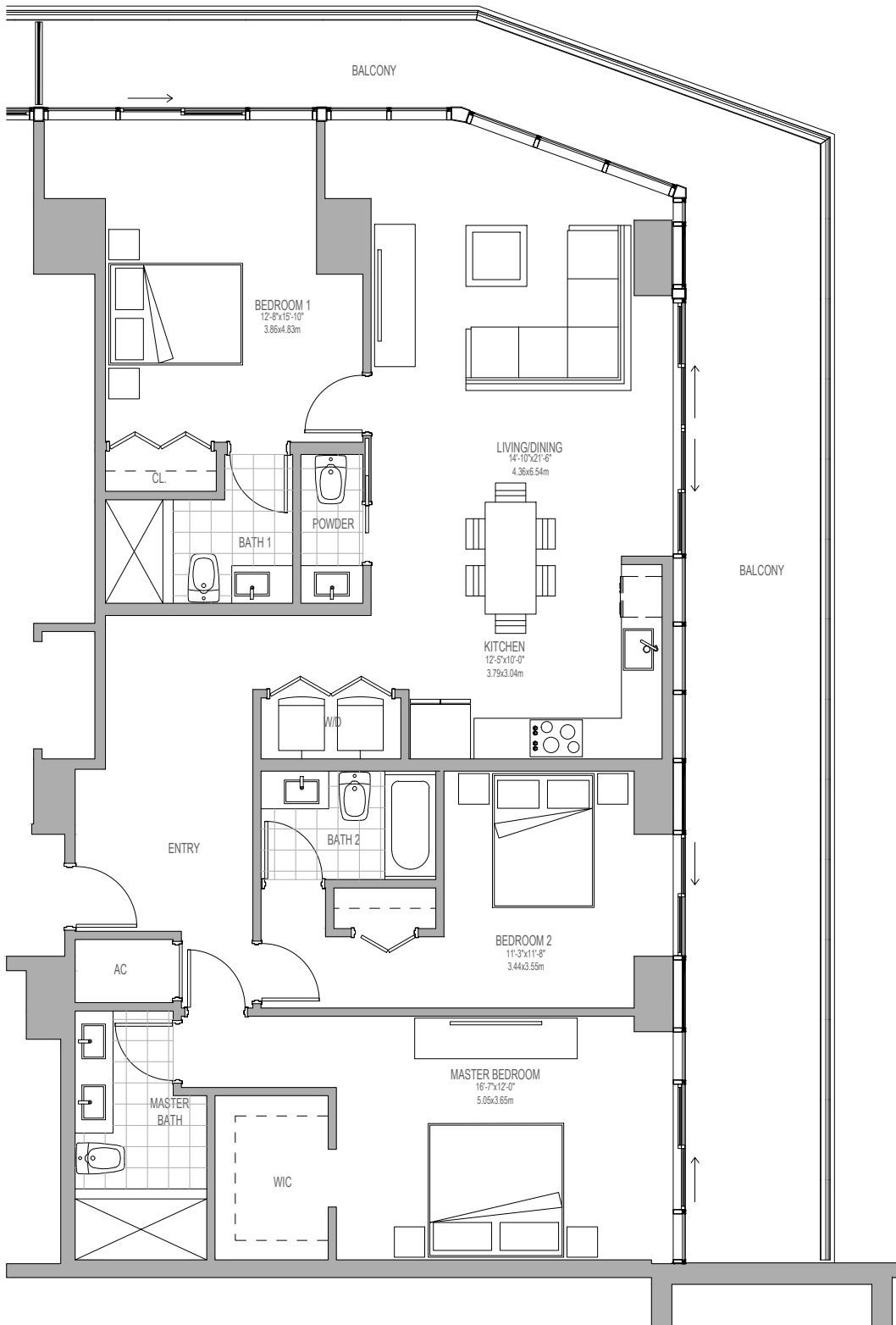
UNIT C1'

3 BEDROOM / 3.5 BATHS

INDOOR LIVING AREA 1667 sq ft 154.87 sq m
 OUTDOOR LIVING AREA 627 sq ft 58.25 sq m



KEY PLAN



KEY PLAN

UNIT C2'

3 BEDROOM / 3.5 BATHS

INDOOR LIVING AREA 1684 sq ft 156.45 sq m

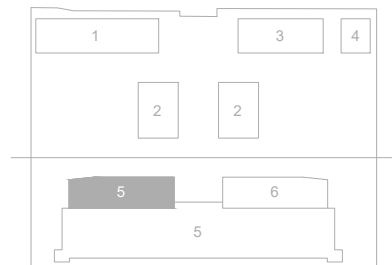
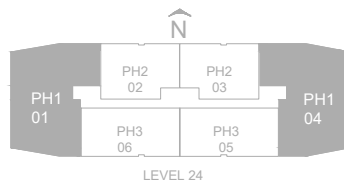
OUTDOOR LIVING AREA 579 sq ft 53.79 sq m



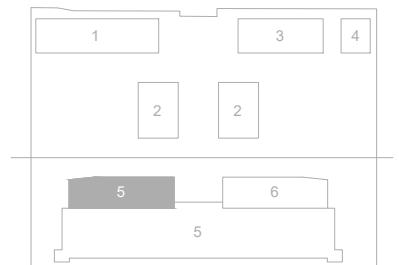
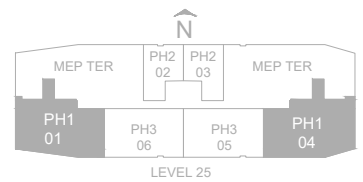
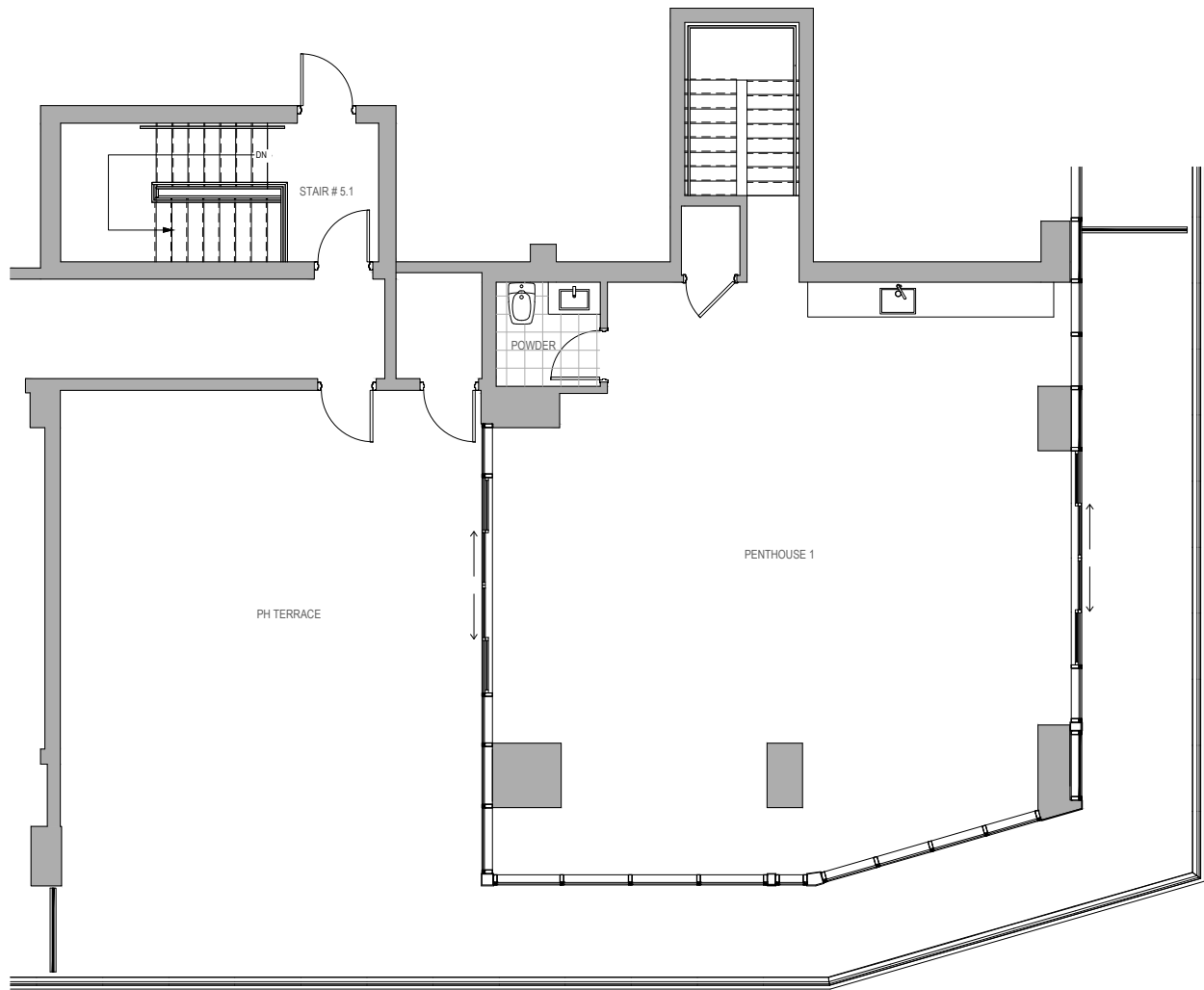
UNIT PH1'

4 BEDROOM / 4.5 BATHS

INDOOR LIVING AREA 3386 sq ft 314.56 sq m
 OUTDOOR LIVING AREA 1016 sq ft 94.38 sq m



KEY PLAN



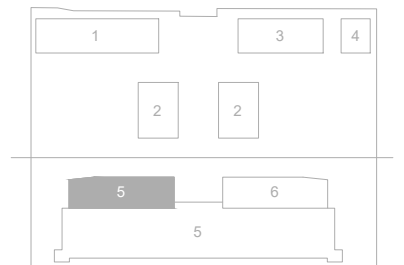
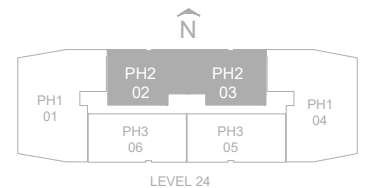
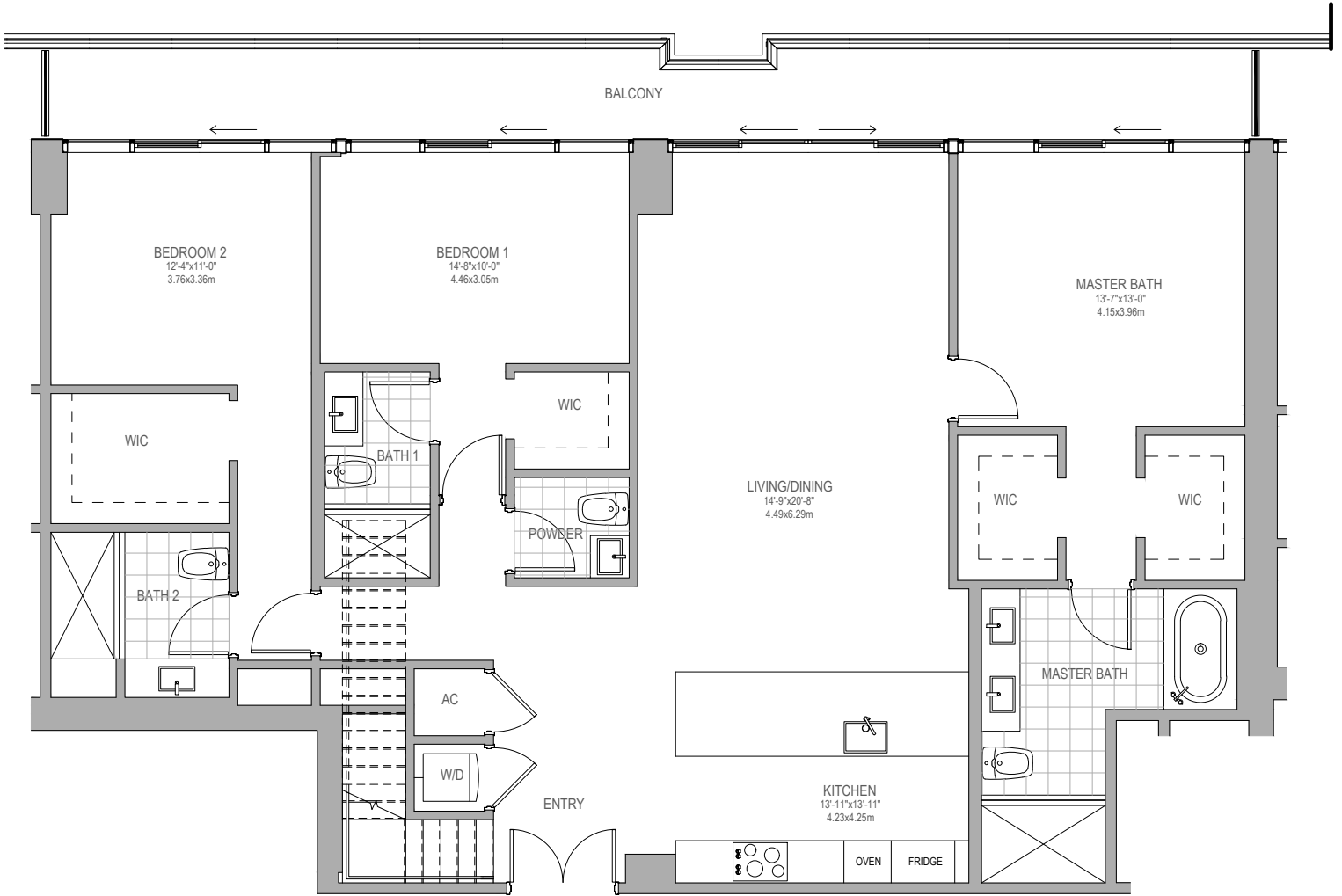
KEY PLAN

UNIT PH1 L25'

LIVING ROOM / 1/2 BATH

INDOOR LIVING AREA 1370 sq ft 127.27 sq m

OUTDOOR LIVING AREA 1327 sq ft 123.28 sq m



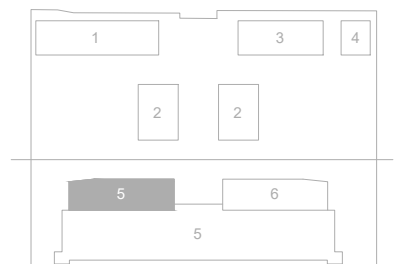
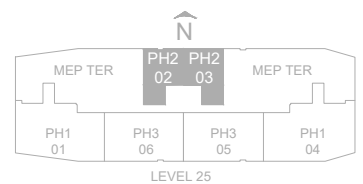
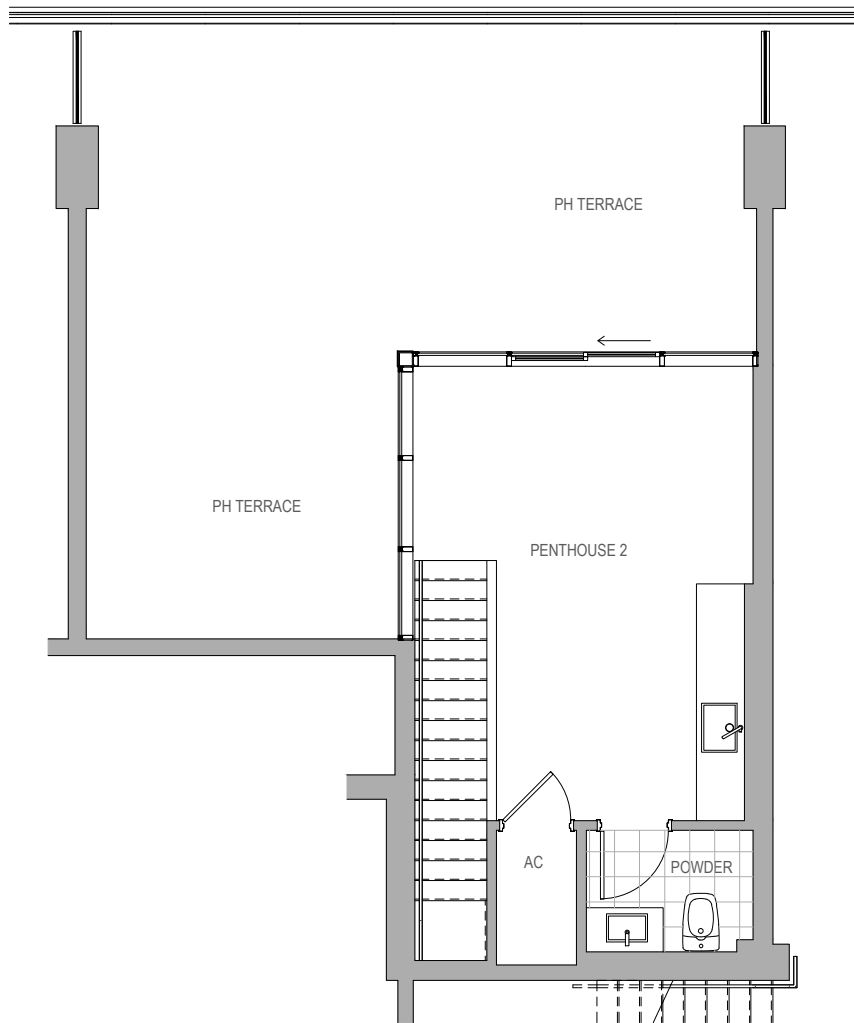
KEY PLAN

UNIT PH2'

3 BEDROOM / 3.5 BATHS

INDOOR LIVING AREA 1894 sq ft 175.96 sq m

OUTDOOR LIVING AREA 283 sq ft 26.29 sq m



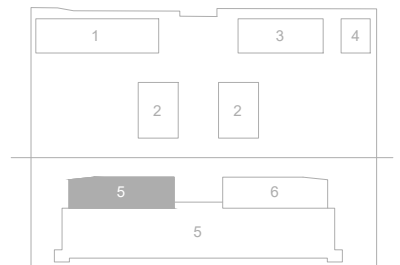
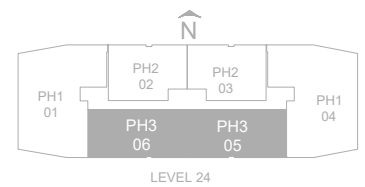
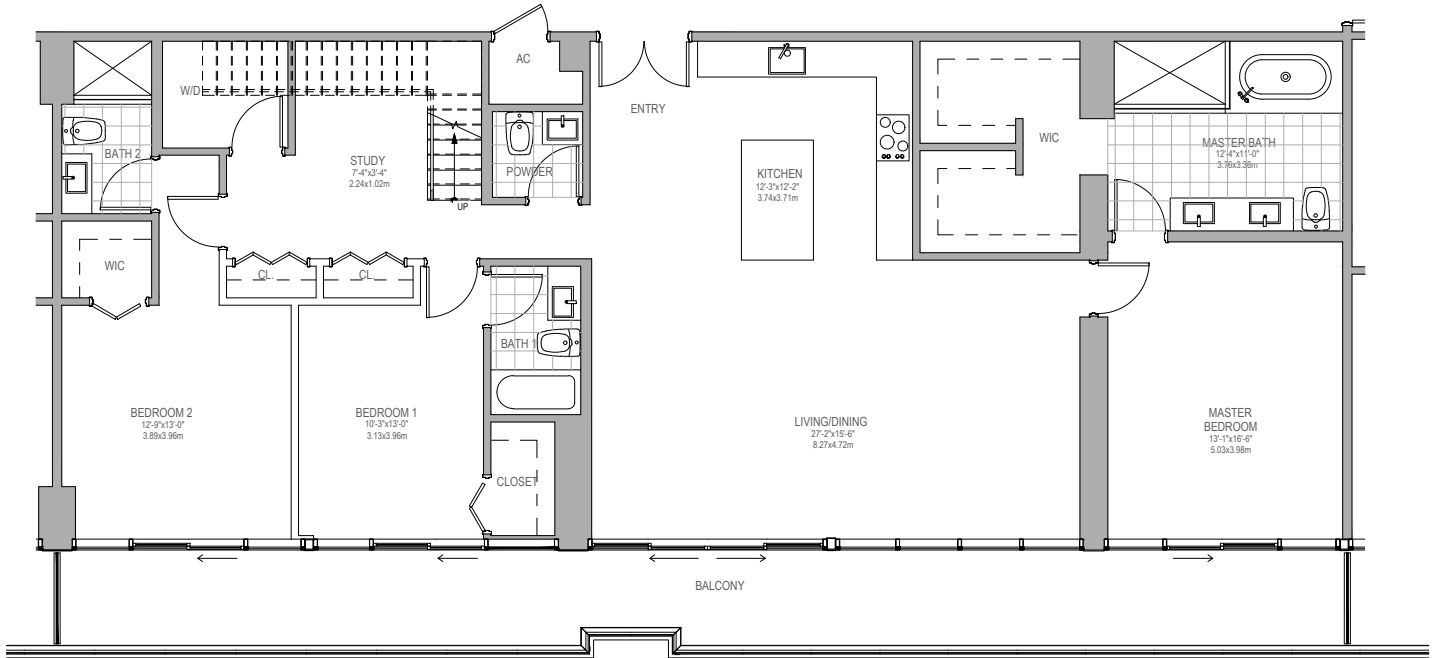
KEY PLAN

UNIT PH2 L25'

LIVING ROOM / 1/2 BATHS

INDOOR LIVING AREA 407 sq ft 37.81 sq m

OUTDOOR LIVING AREA 577 sq ft 53.60 sq m



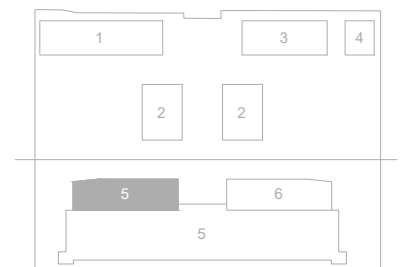
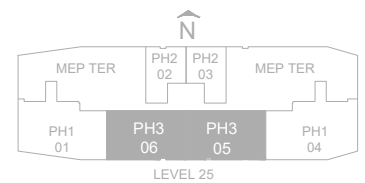
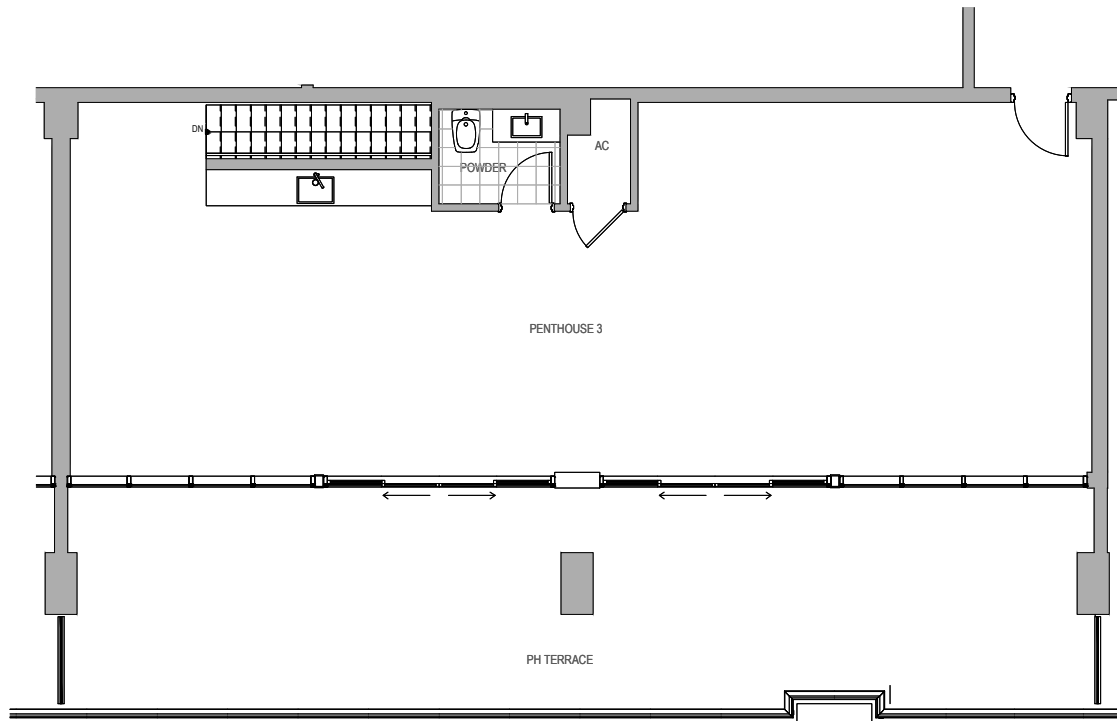
UNIT PH3'

3 BEDROOM / 3.5 BATHS

INDOOR LIVING AREA 2044 sq ft 189.89 sq m

OUTDOOR LIVING AREA 426 sq ft 39.58 sq m

KEY PLAN



UNIT PH3 L25'

LIVING ROOM / 1/5 BATHS

INDOOR LIVING AREA 1284 sq ft 119.19 sq m

OUTDOOR LIVING AREA 754 sq ft 70.05 sq m

KEY PLAN