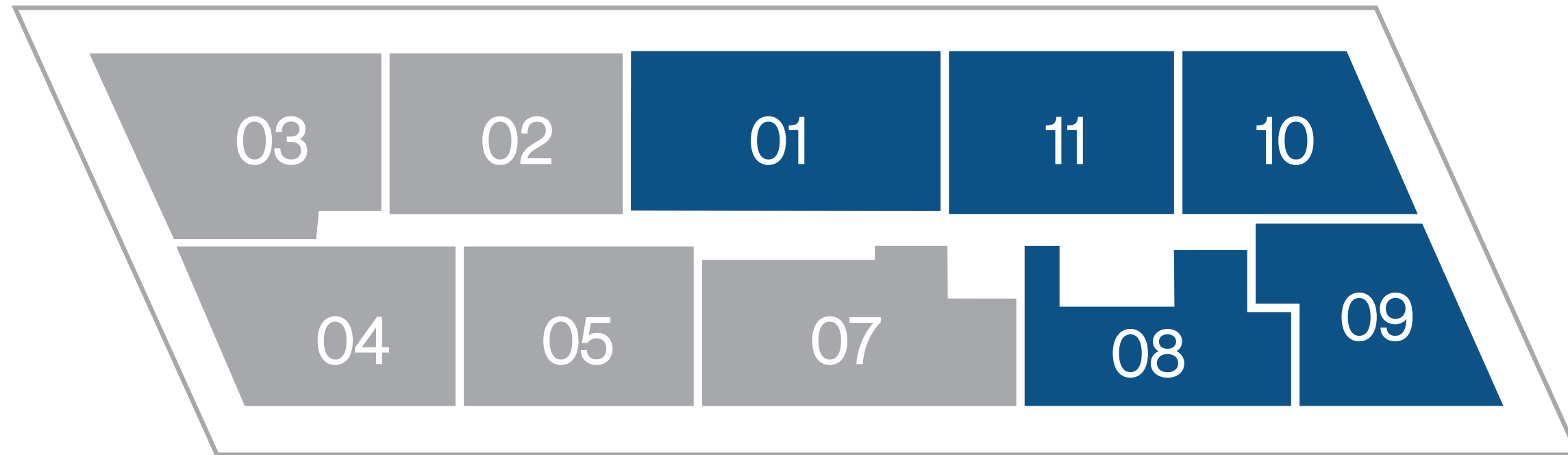


Key Plan  
**Floors 27-28**



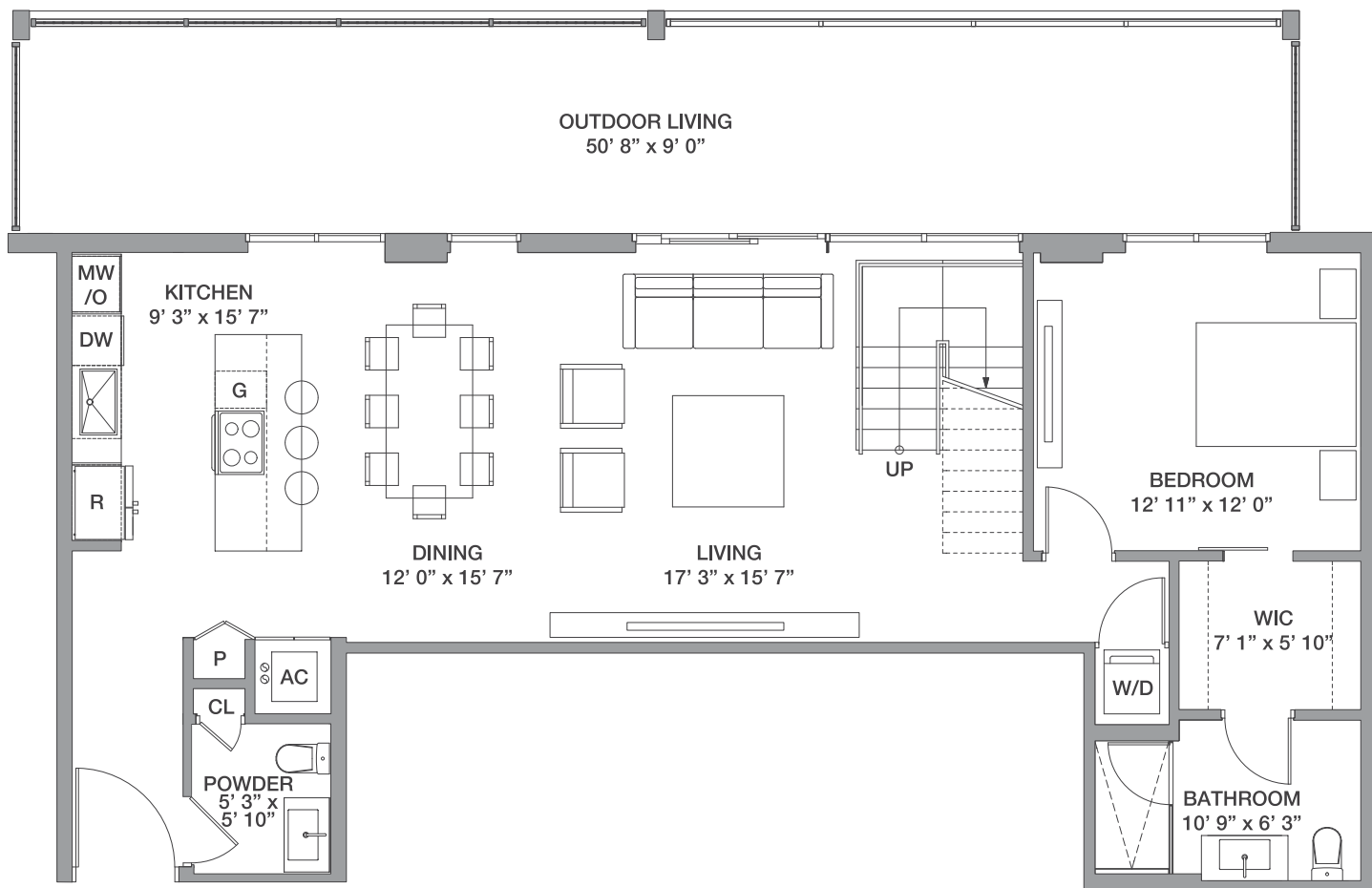
 3 Bedrooms / 3.5 Baths

PH 01

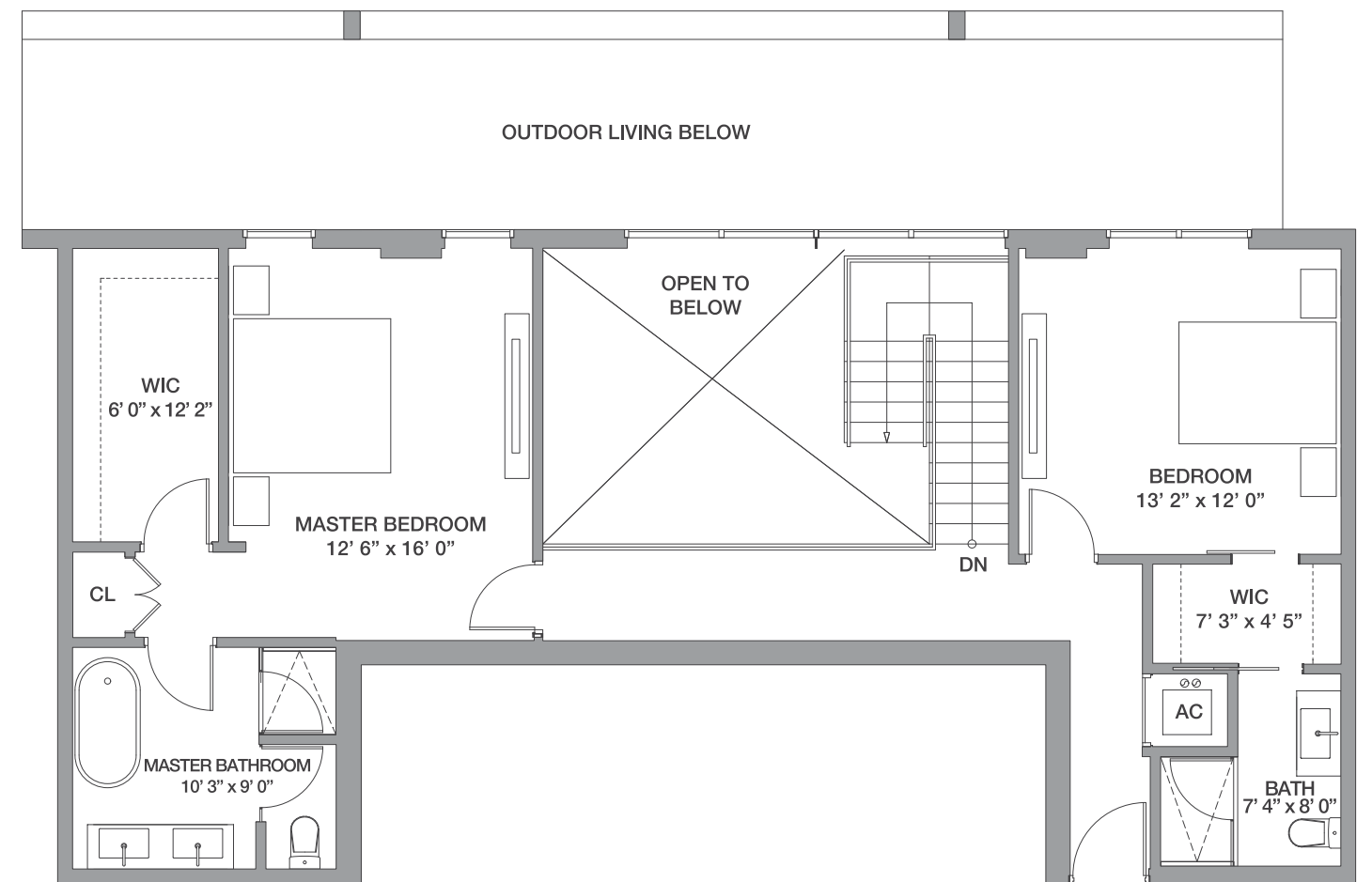
# 3 Bedrooms / 3.5 Baths

Floors: 27 - 28

Residence Interior	2,038 SqFt	190 SqM
Outdoor Living	462 SqFt	43 SqM
<b>Total:</b>	<b>2,500 SqFt</b>	<b>233 SqM</b>

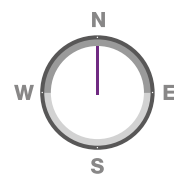
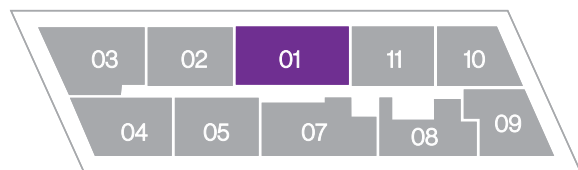


LOWER LEVEL



UPPER LEVEL

FLOORS: 27 - 28

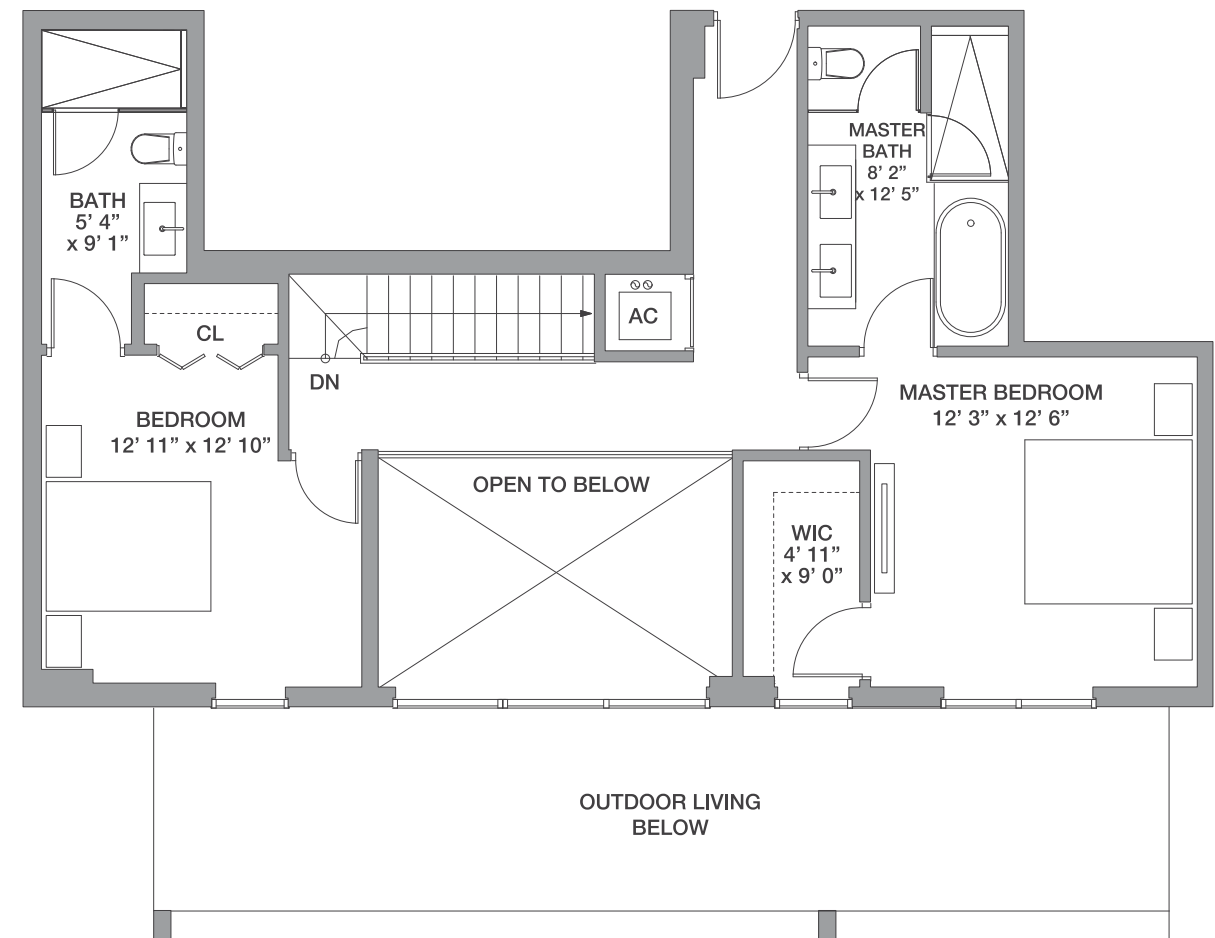
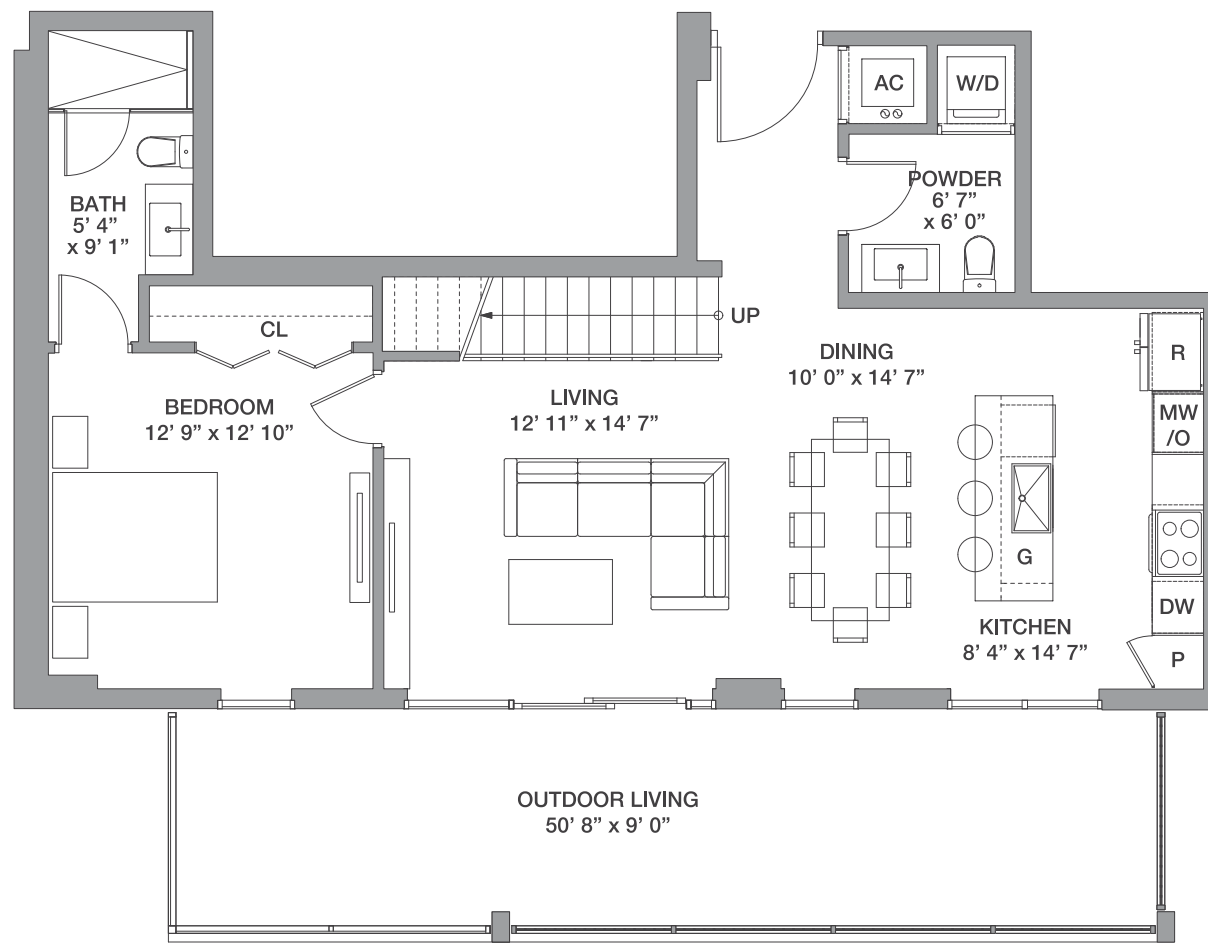


PH 08

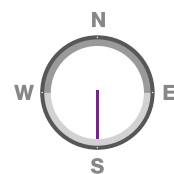
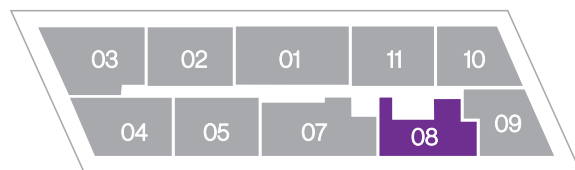
# 3 Bedrooms / 3.5 Baths

Floors: 27 - 28

Residence Interior	1,721 SqFt	160 SqM
Outdoor Living	349 SqFt	33 SqM
<b>Total:</b>	<b>2,070 SqFt</b>	<b>193 SqM</b>



FLOORS: 27 - 28



PH 09

# 3 Bedrooms / 3.5 Baths

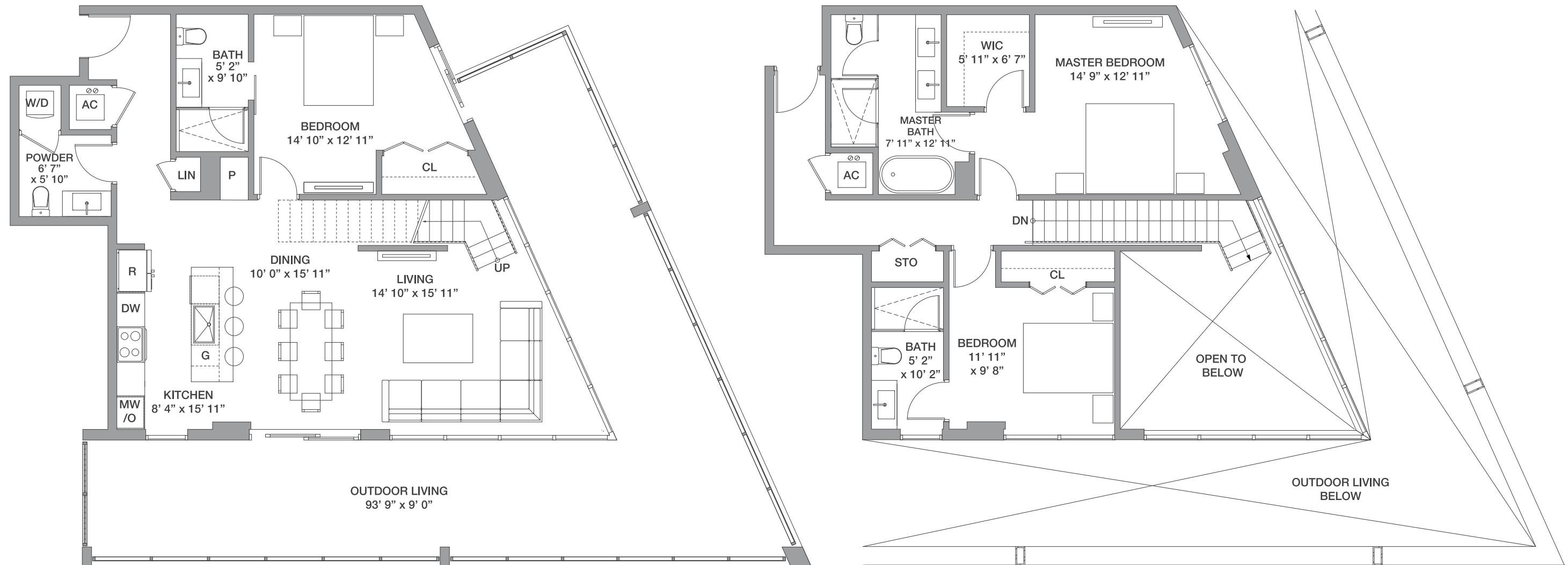
Floors: 27 - 28

Residence Interior	1,755 SqFt	163 SqM
Outdoor Living	725 SqFt	68 SqM
<b>Total:</b>	<b>2,480 SqFt</b>	<b>231 SqM</b>

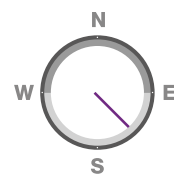
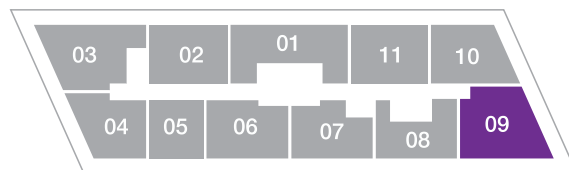


METROPICA  
RESIDENCES

DESIGN BY YOO



FLOORS: 27 - 28



PH 10

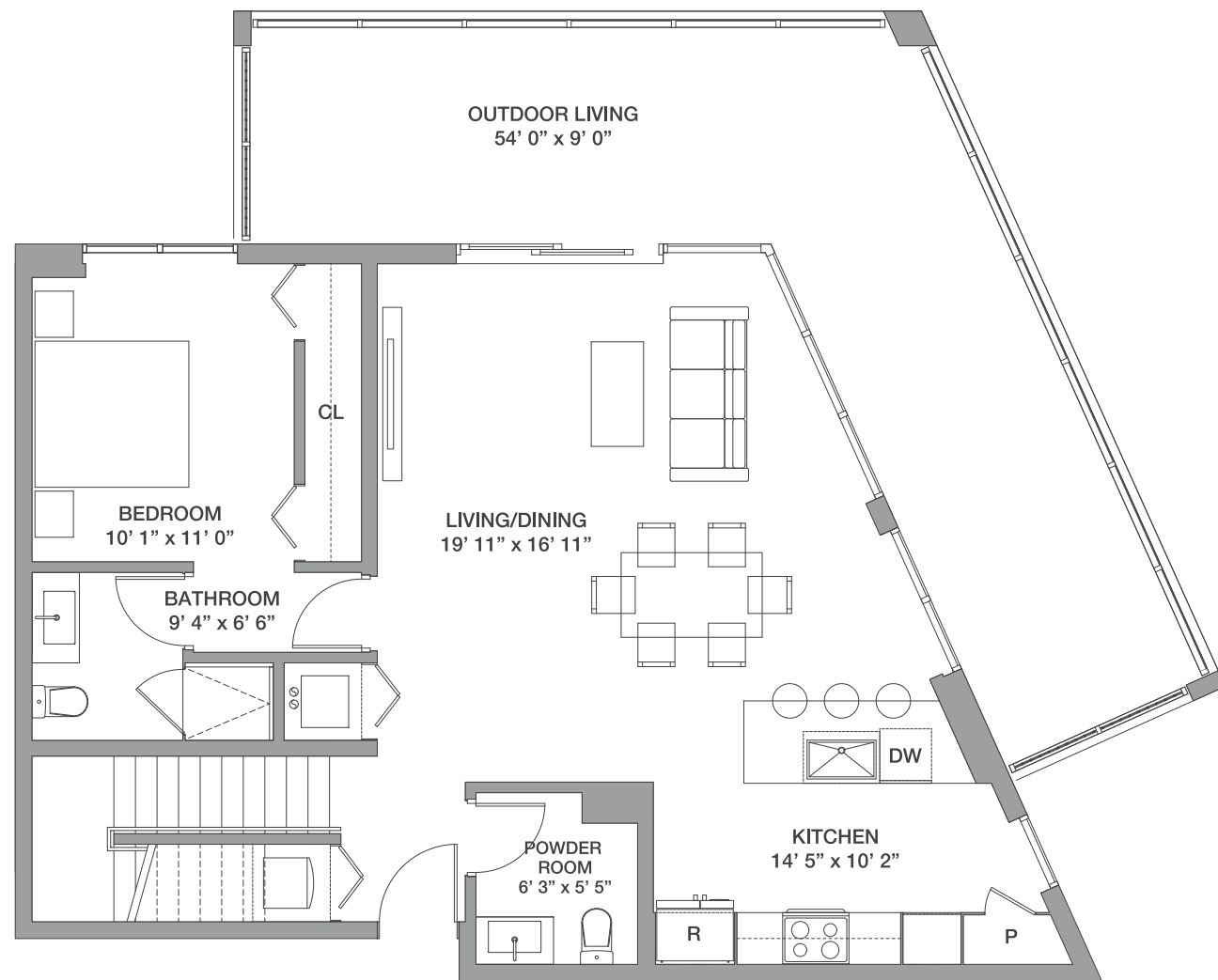
# 3 Bedrooms / 3.5 Baths

Floors: 27 - 28

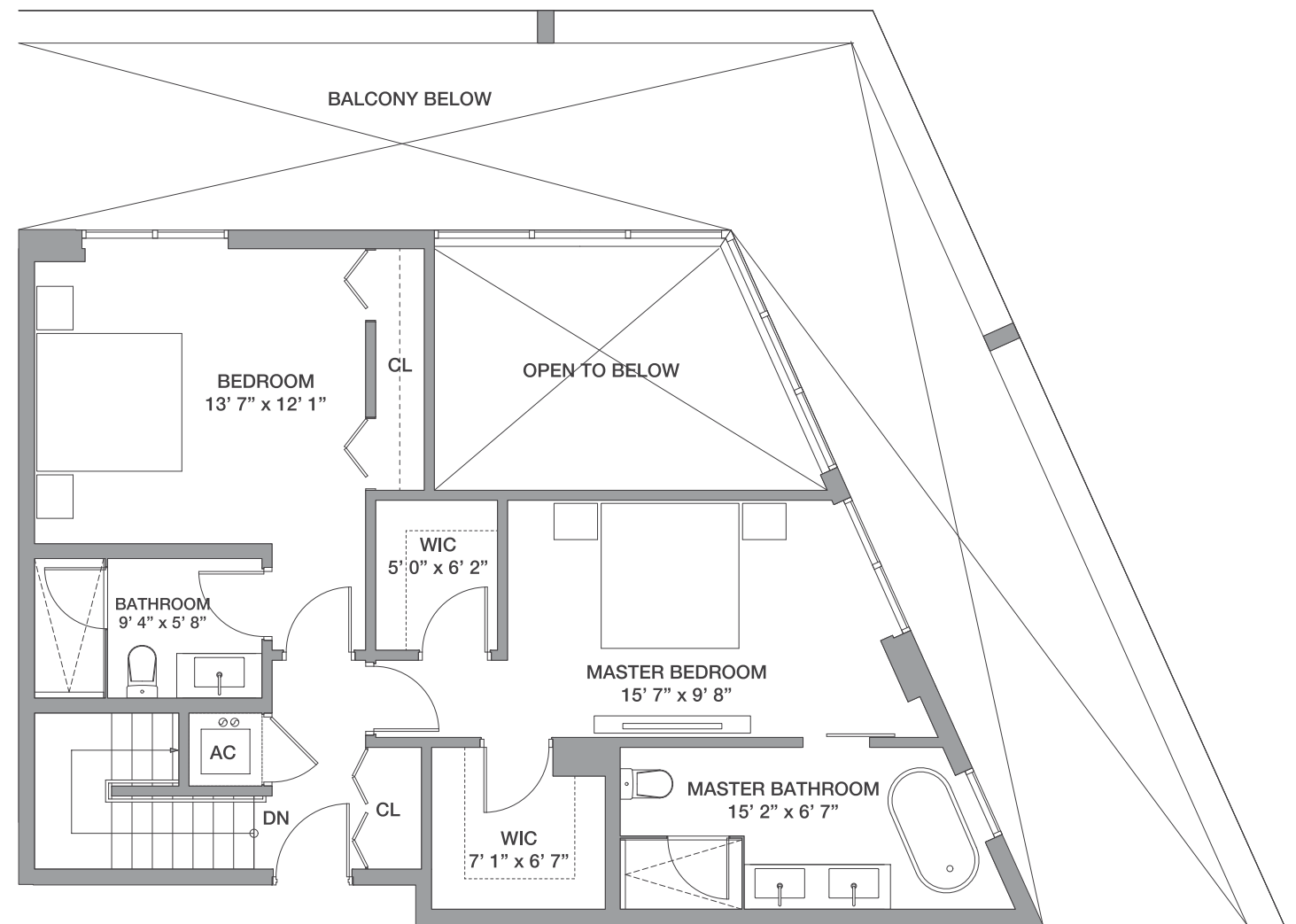
Residence Interior	1,745 SqFt	162 SqM
Outdoor Living	444 SqFt	41 SqM
<b>Total:</b>	<b>2,189 SqFt</b>	<b>203 SqM</b>



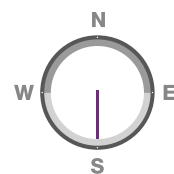
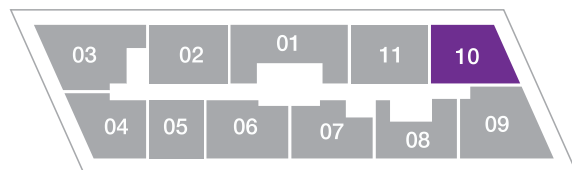
LOWER LEVEL



UPPER LEVEL



FLOORS: 27 - 28

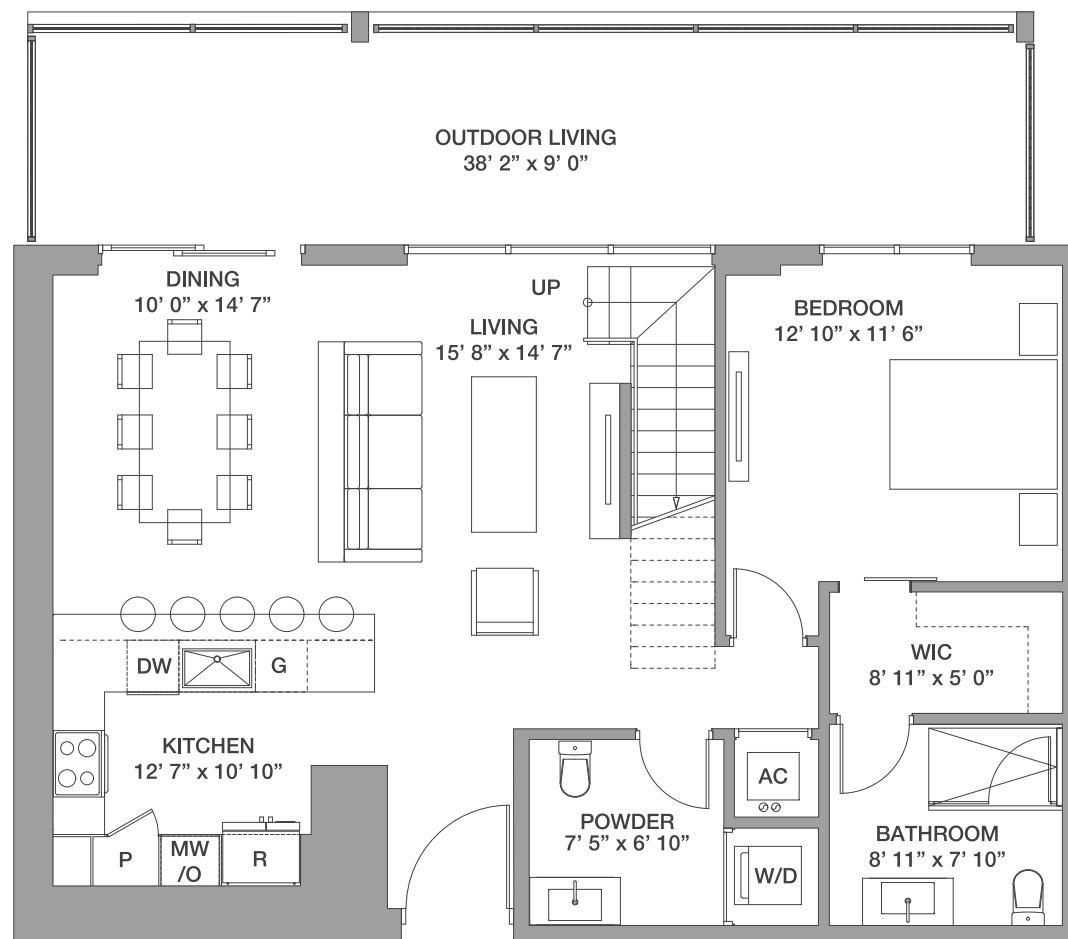


PH 11

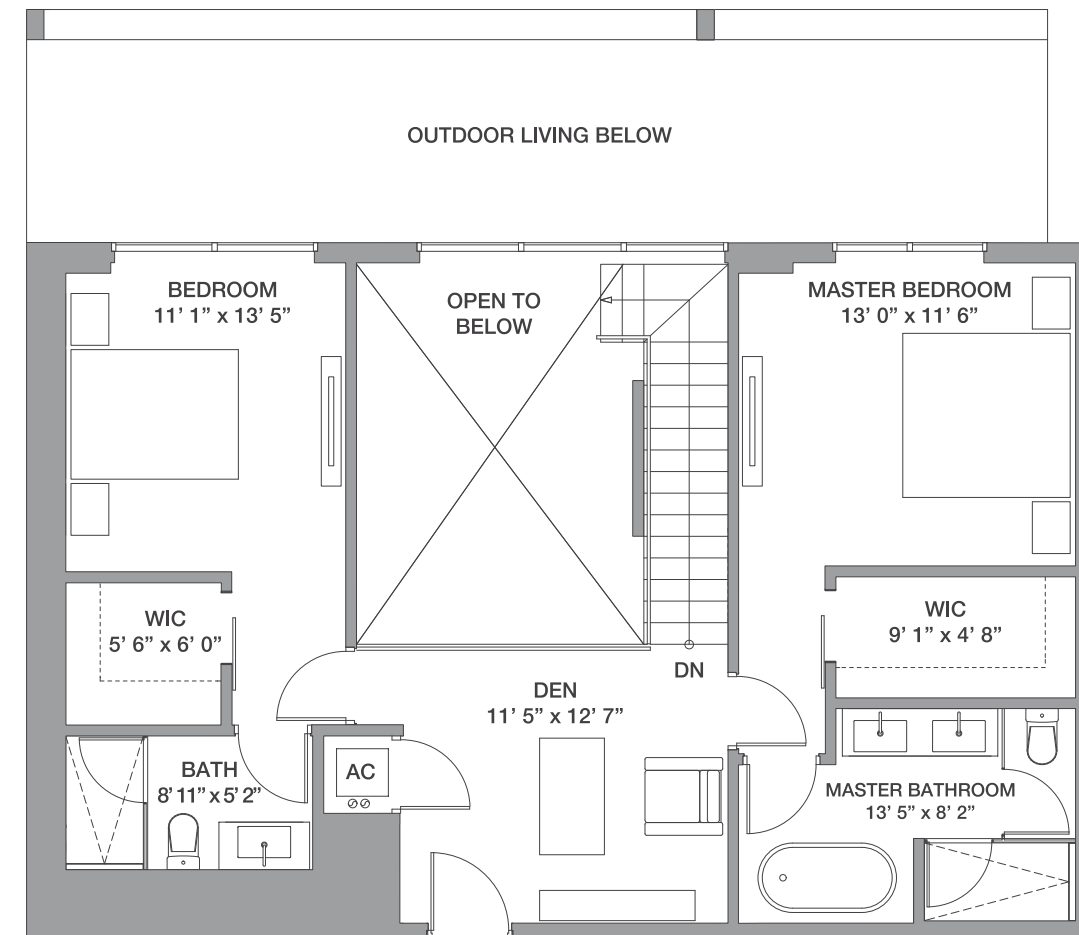
# 3 Bedrooms / 3.5 Baths

Floors: 27 - 28

Residence Interior	1,873 SqFt	174 SqM
Outdoor Living	350 SqFt	33 SqM
<b>Total:</b>	<b>2,223 SqFt</b>	<b>207 SqM</b>



LOWER LEVEL



UPPER LEVEL

FLOORS: 27 - 28

