

Line 14,15

# 1 Bedroom / 1.5 Baths + Den

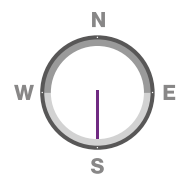
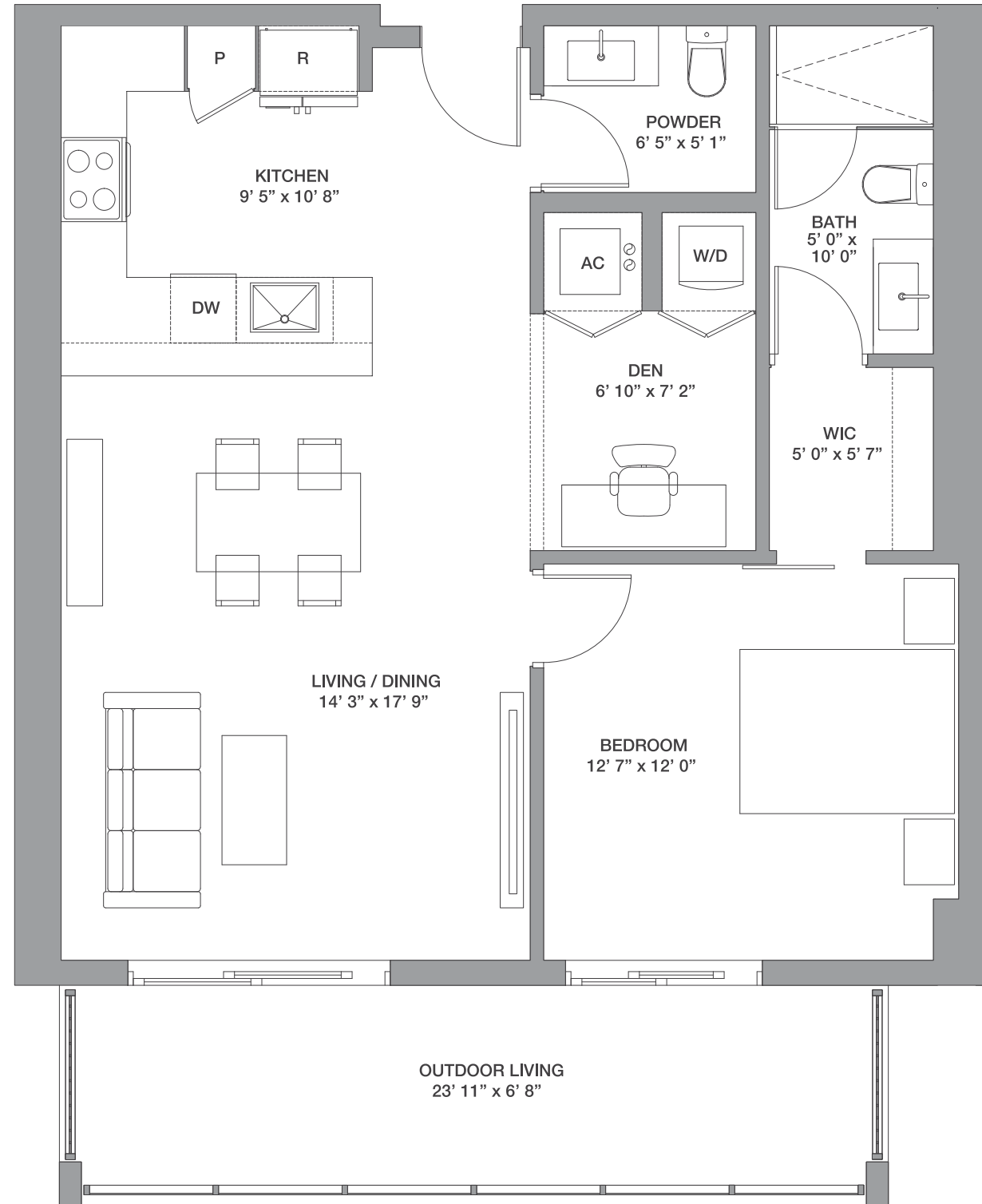
Floors: 6

Residence Interior	819 Sq Ft	76 Sq M
Outdoor Living	164 Sq Ft	15 Sq M
<b>Total:</b>	<b>983 Sq Ft</b>	<b>91 Sq M</b>



METROPICA  
RESIDENCES

DESIGN BY YOO



Line 01

# 1 Bedroom / 1 Bath

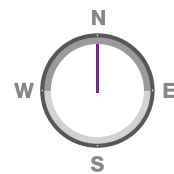
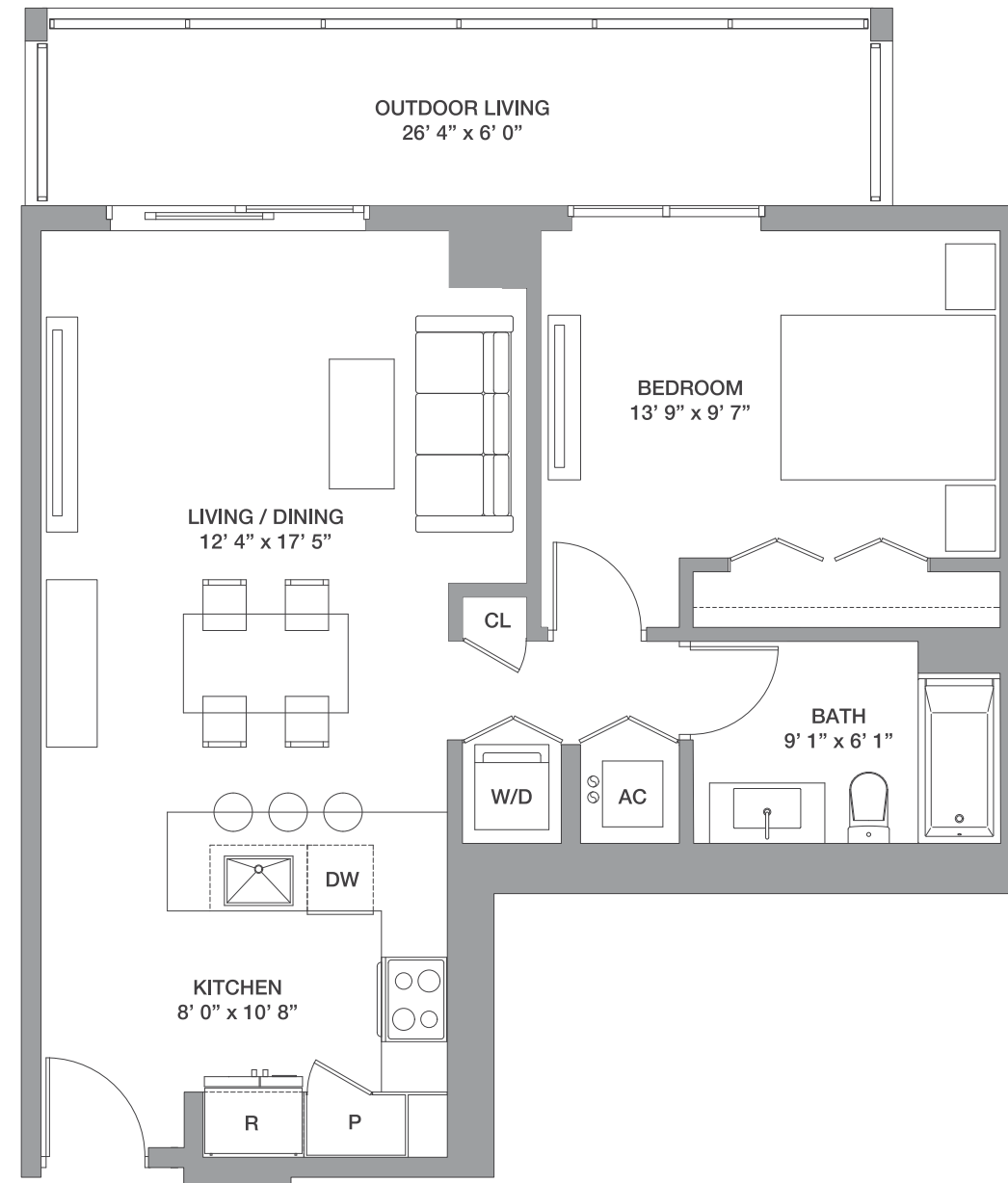
Floors: 2 - 6

Residence Interior	725 SqFt	67 SqM
Outdoor Living	158 SqFt	15 SqM
<b>Total:</b>	<b>883 SqFt</b>	<b>82 SqM</b>

*One*

**METROPICA**  
RESIDENCES

DESIGN BY YOO



Line 12

# 1 Bedroom / 1 Bath

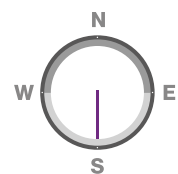
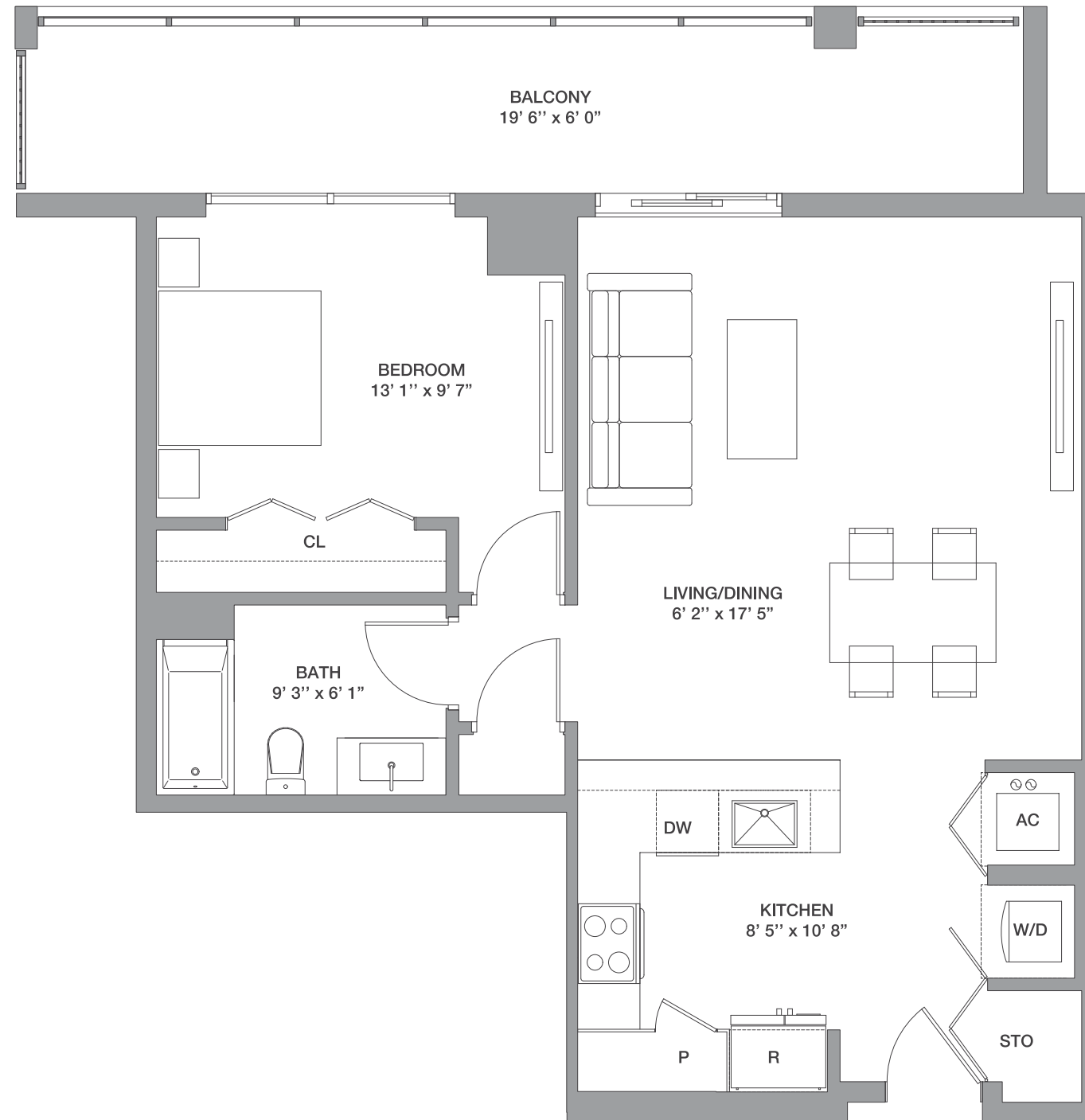
Floors: 2 - 6

Residence Interior	776 Sq Ft	72 Sq M
Outdoor Living	117 Sq Ft	11 Sq M
<b>Total:</b>	<b>893 Sq Ft</b>	<b>83 Sq M</b>



METROPICA  
RESIDENCES

DESIGN BY YOO

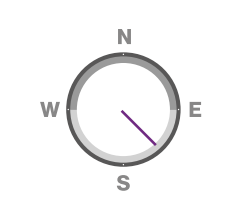
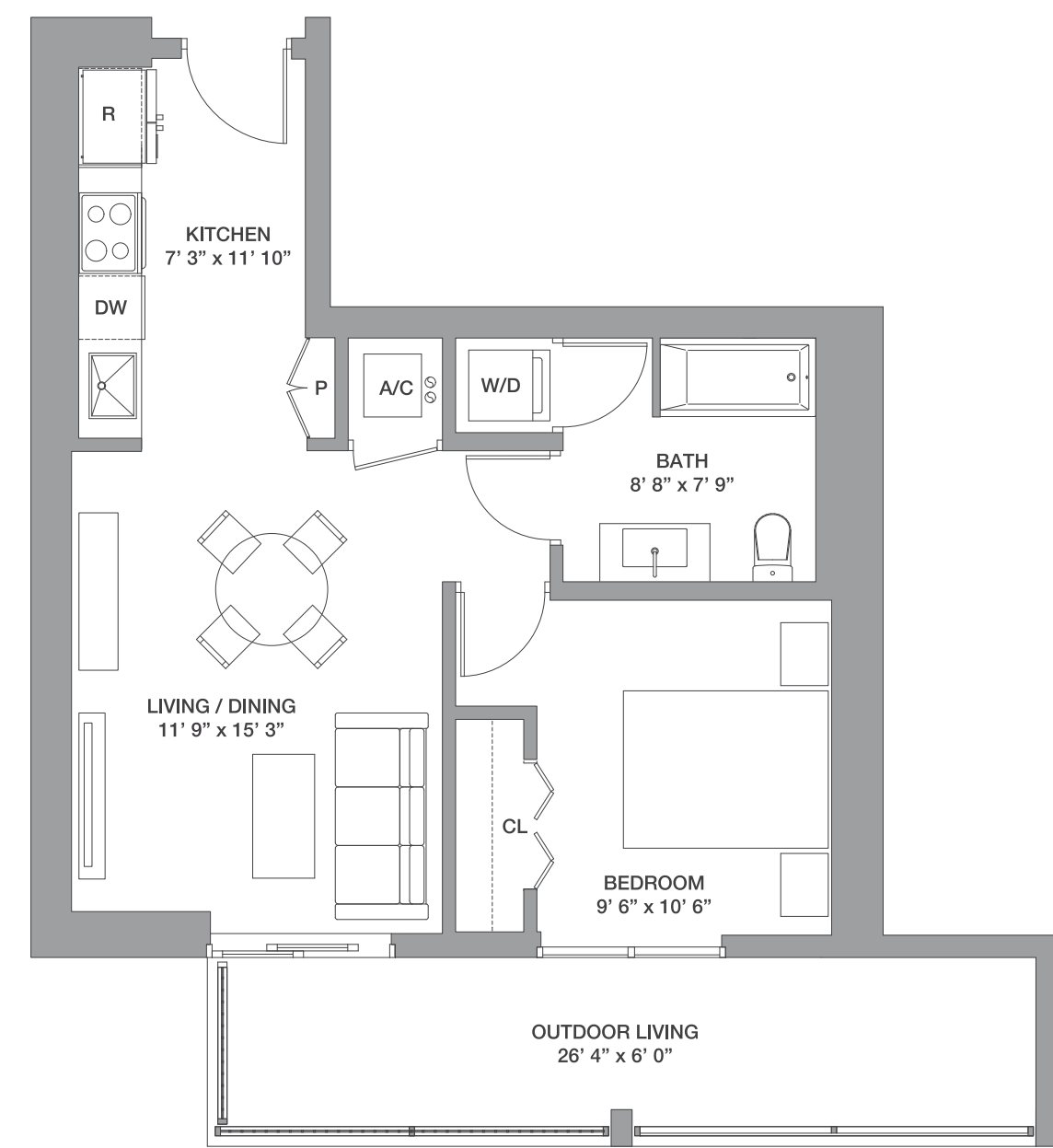


Line 08

# 1 Bedroom / 1 Bath

Floors: 2 - 5

Residence Interior	608 Sq Ft	56 Sq M
Outdoor Living	158 Sq Ft	15 Sq M
<b>Total:</b>	<b>766 Sq Ft</b>	<b>71 Sq M</b>



Line 08

# 1 Bedroom / 1 Bath + Den

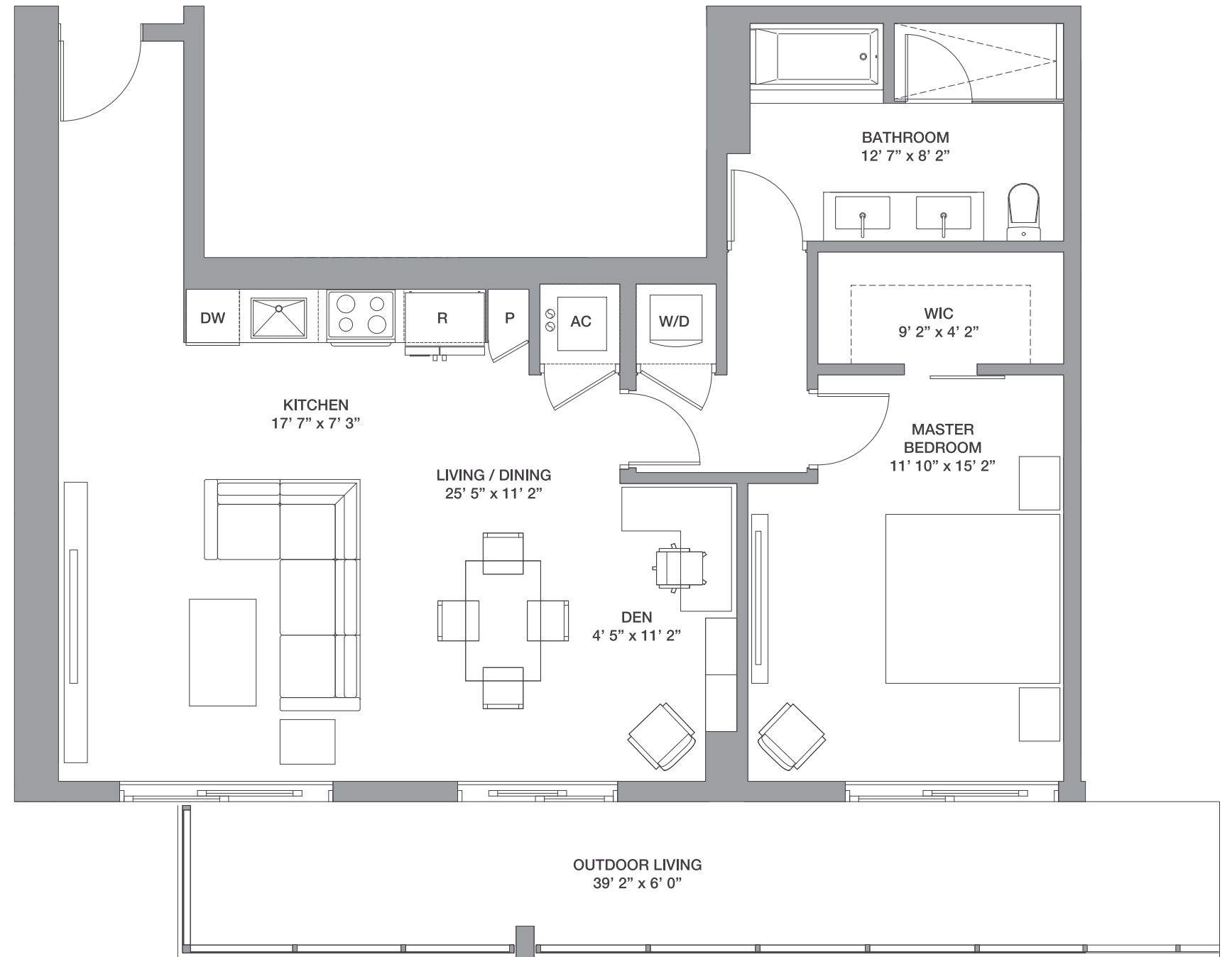
Floor: 8

Residence Interior	953 Sq Ft	89 Sq M
Outdoor Living	235 Sq Ft	22 Sq M
<b>Total:</b>	<b>1,188 Sq Ft</b>	<b>111 Sq M</b>

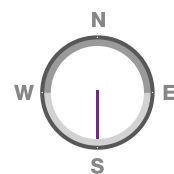
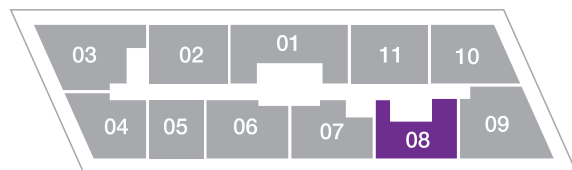


METROPICA  
RESIDENCES

DESIGN BY YOO



FLOORS: 8

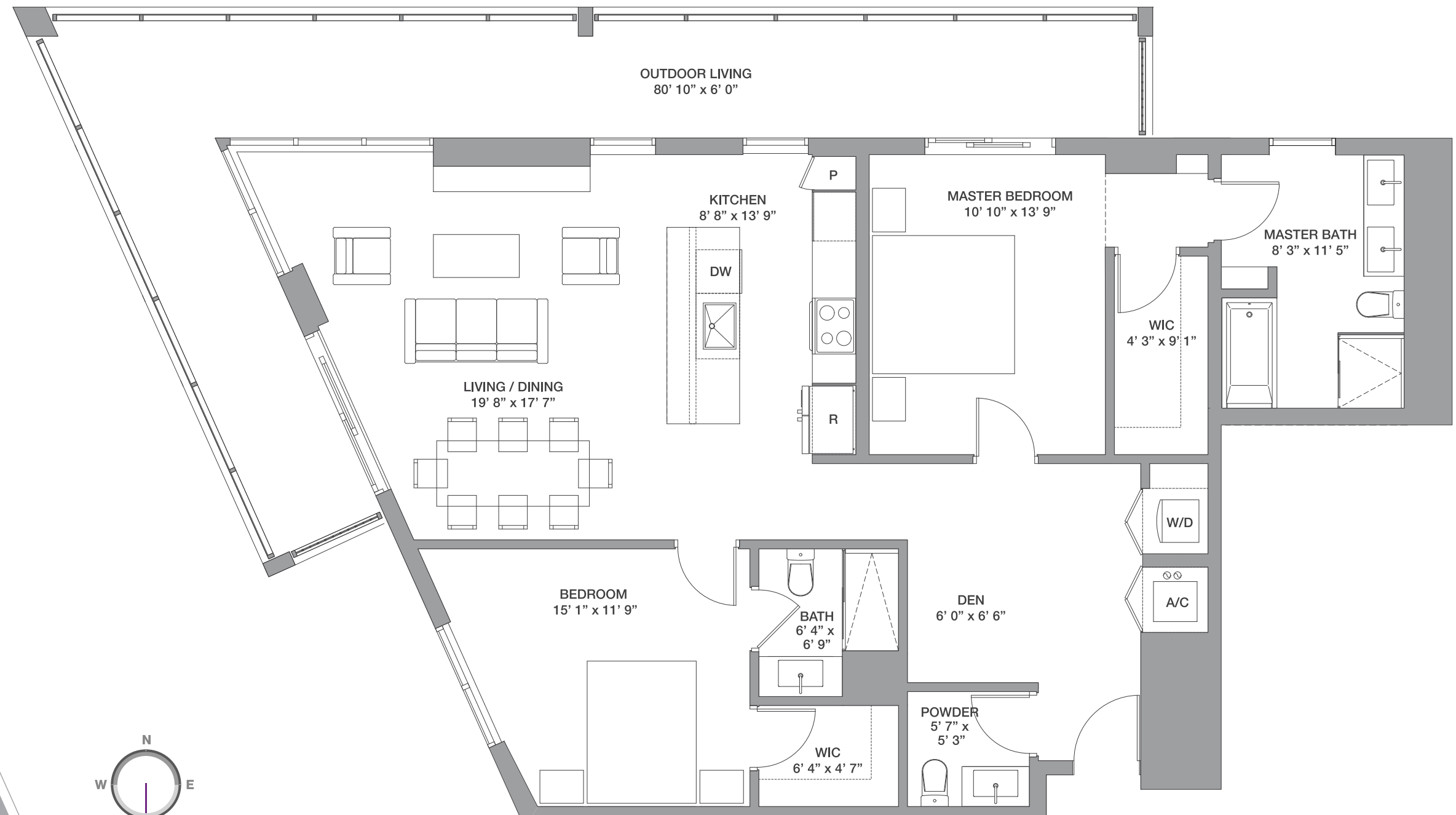


Line 03

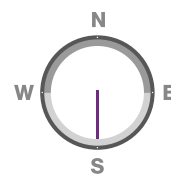
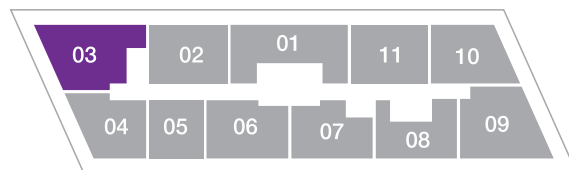
# 2 Bedrooms / 2.5 Baths + Den

Floor: 4

Residence Interior	1,306 Sq Ft	121 Sq M
Outdoor Living	430 Sq Ft	40 Sq M
<b>Total:</b>	<b>1,736 Sq Ft</b>	<b>161 Sq M</b>



FLOORS: 2 & 3

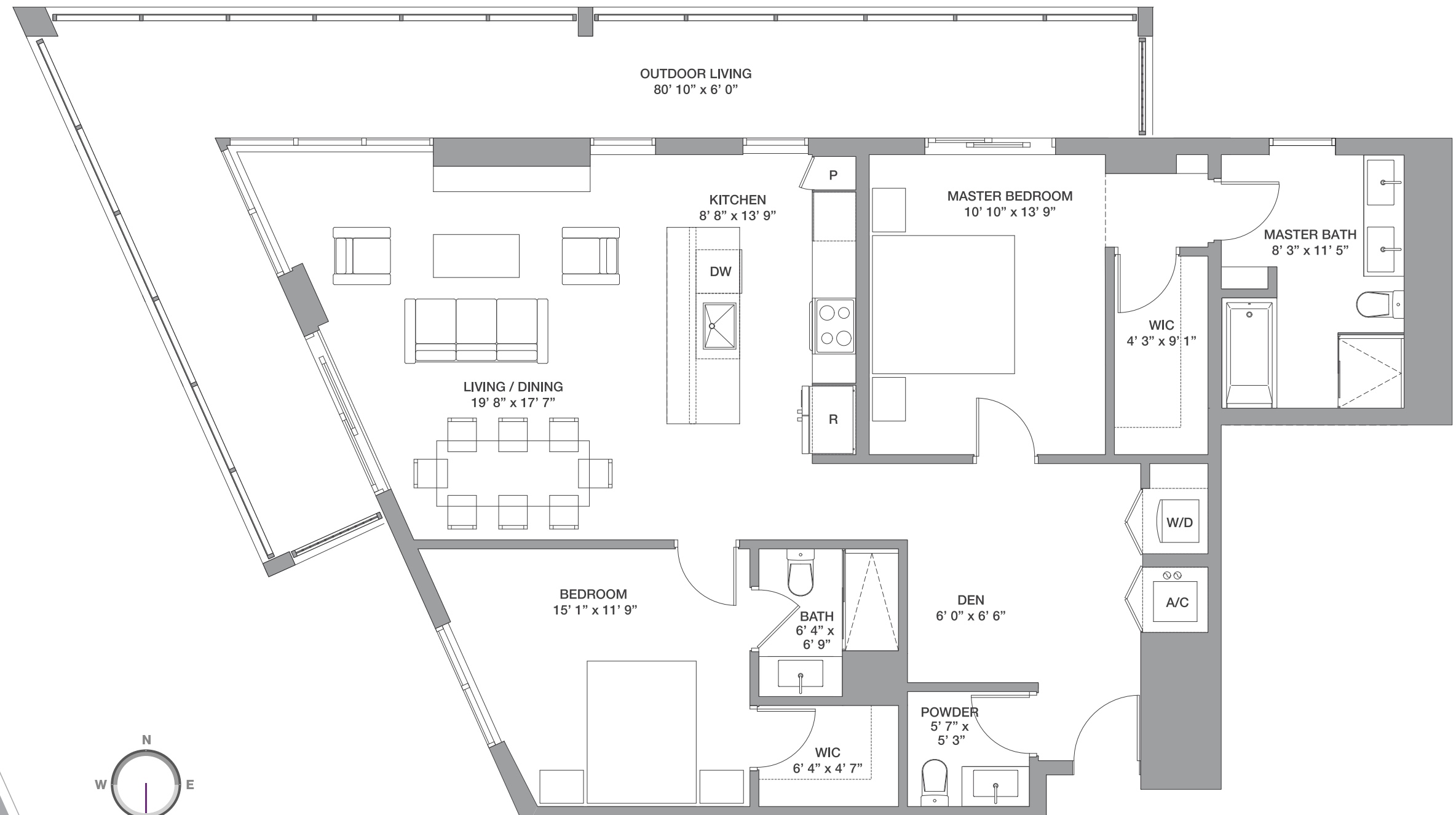


Line 03

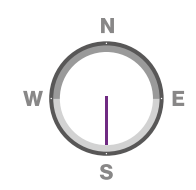
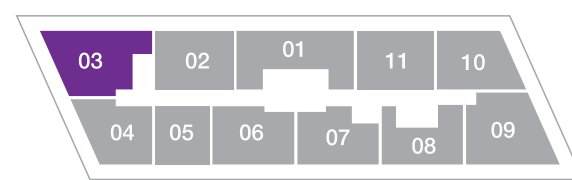
# 2 Bedrooms / 2.5 Baths + Den

Floor: 5

Residence Interior	1,294 Sq Ft	120 Sq M
Outdoor Living	429 Sq Ft	40 Sq M
<b>Total:</b>	<b>1,723 Sq Ft</b>	<b>160 Sq M</b>



FLOORS: 2 & 3

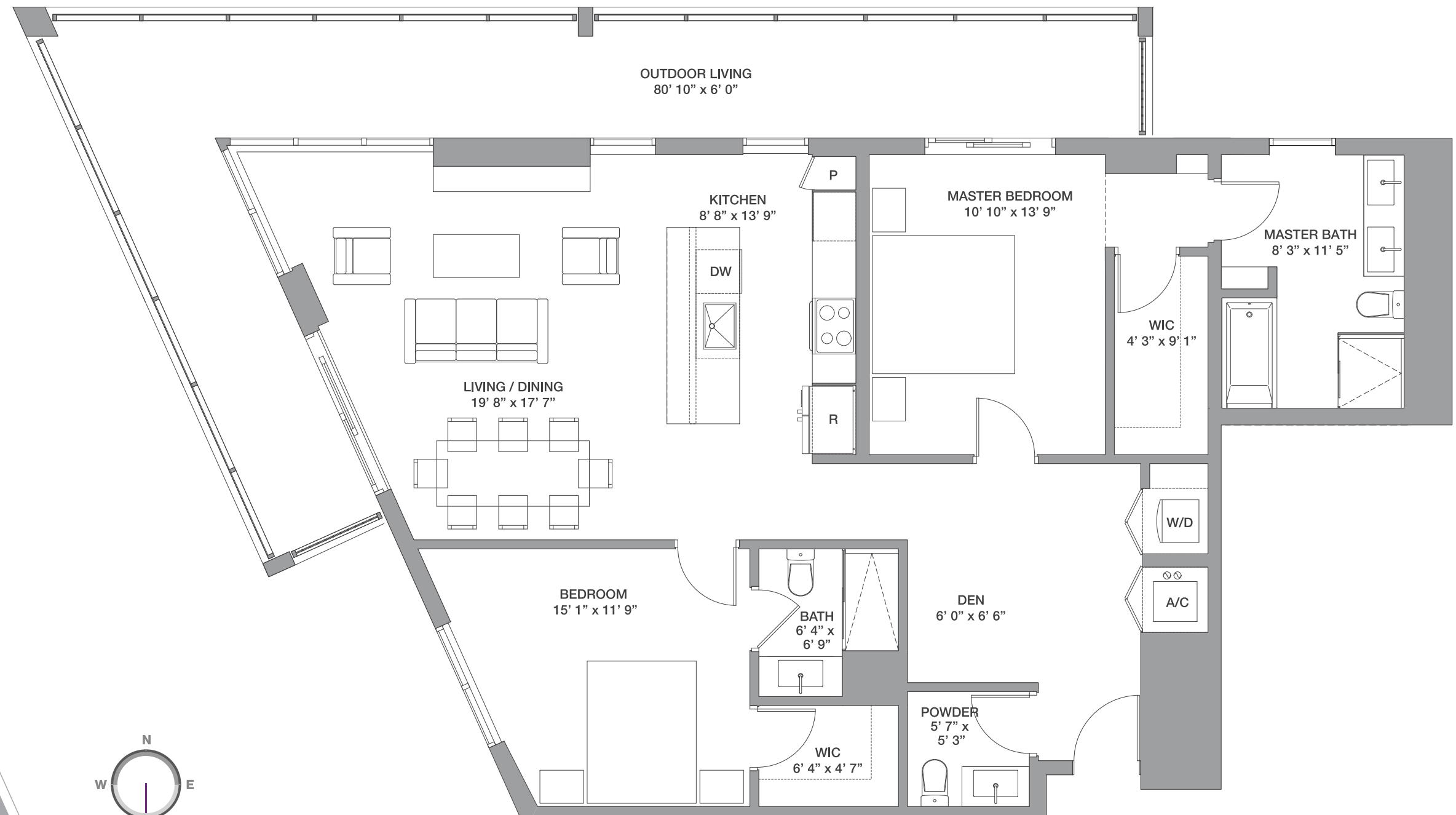


Line 03

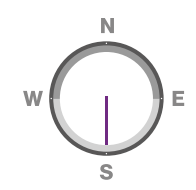
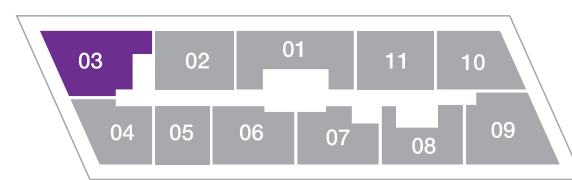
# 2 Bedrooms / 2.5 Baths + Den

Floors: 2 & 3

Residence Interior	1,294 Sq Ft	120 Sq M
Outdoor Living	429 Sq Ft	40 Sq M
<b>Total:</b>	<b>1,723 Sq Ft</b>	<b>160 Sq M</b>



FLOORS: 2 & 3





Line 16

# 2 Bedrooms / 2 Baths + Den

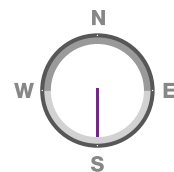
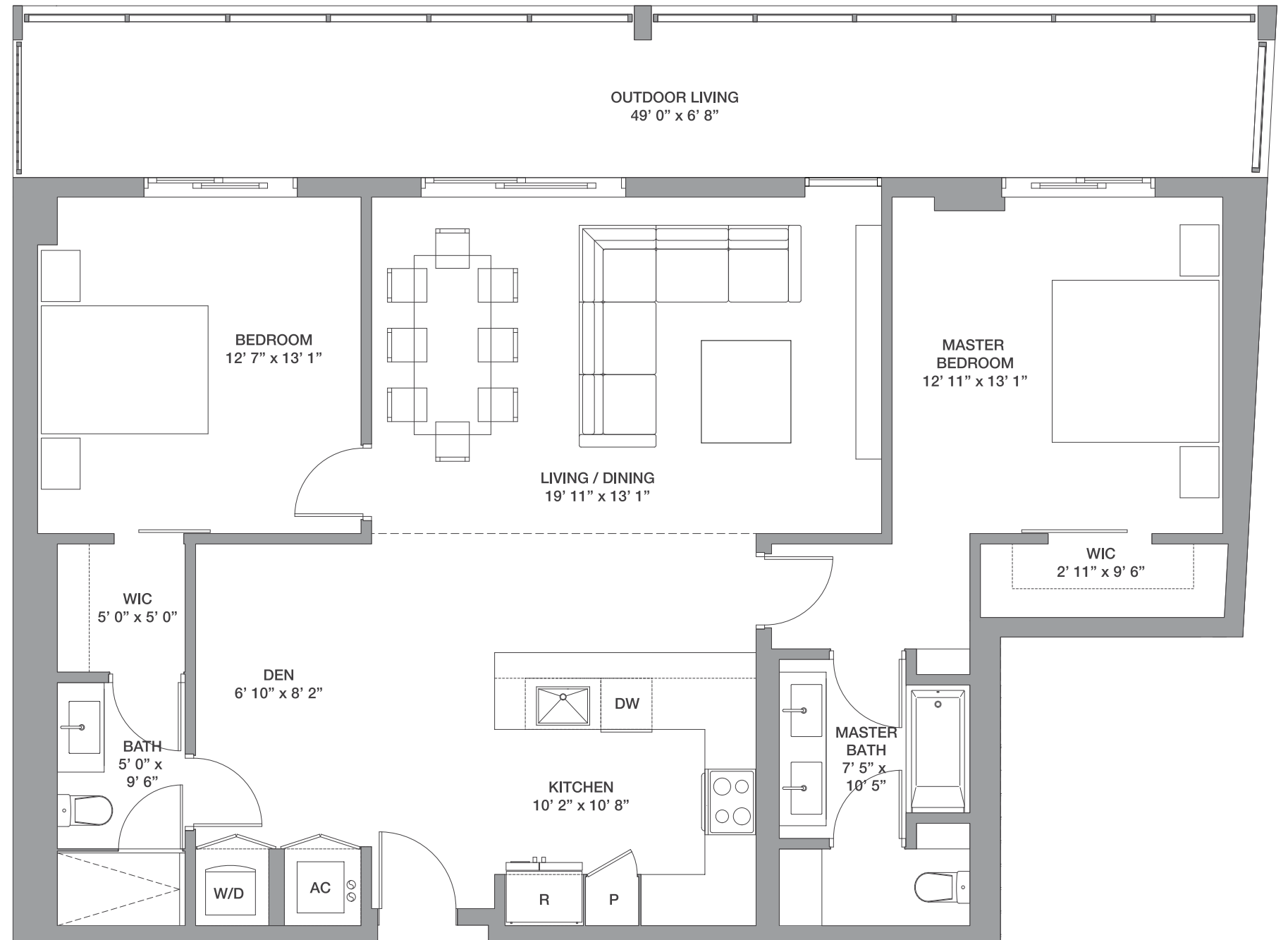
Floor: 6

Residence Interior	1,289 Sq Ft	120 Sq M
Outdoor Living	330 Sq Ft	31 Sq M
<b>Total:</b>	<b>1,619 Sq Ft</b>	<b>151 Sq M</b>



METROPICA  
RESIDENCES

DESIGN BY YOO



Line 08

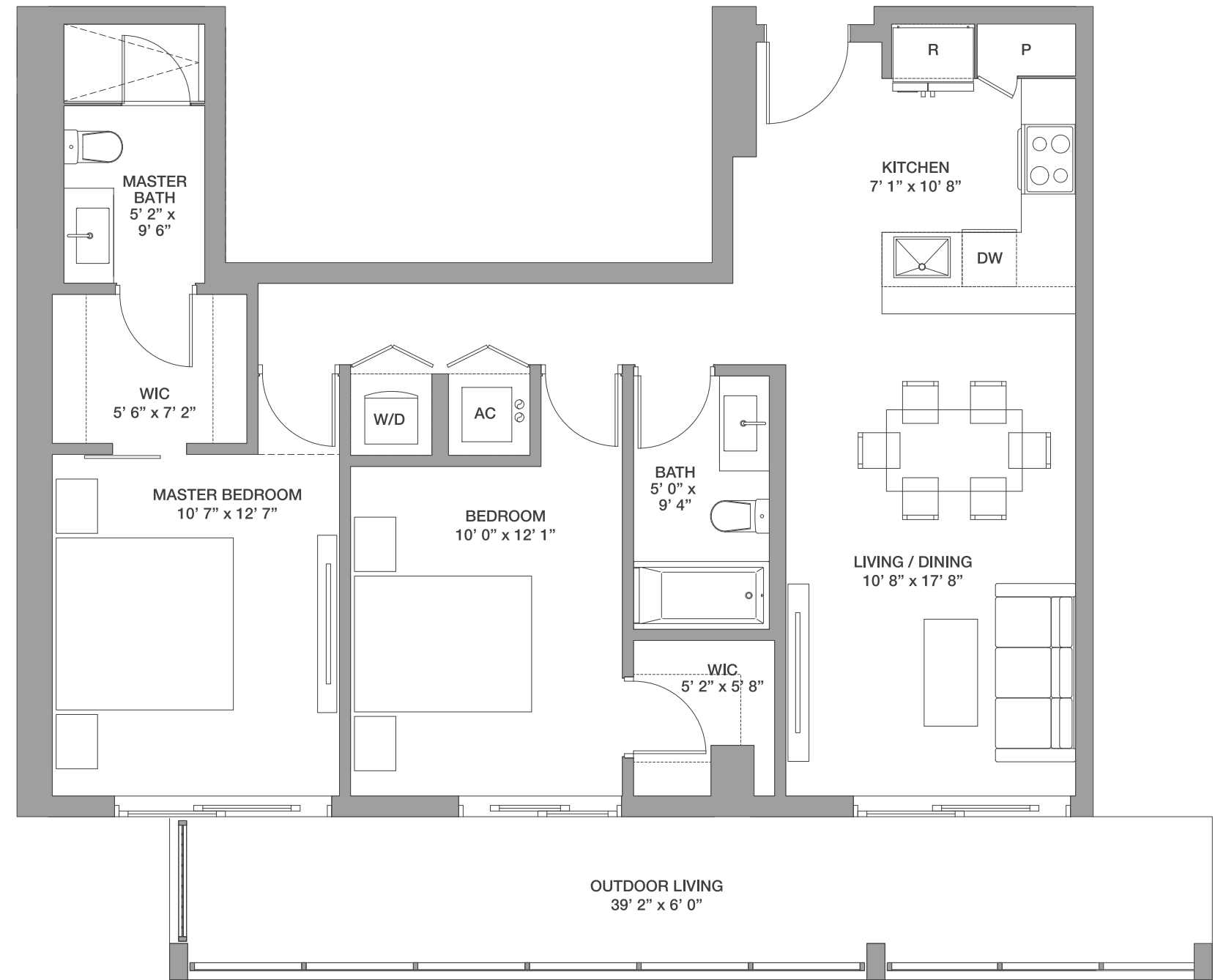
# 2 Bedrooms / 2 Baths

Floor: 26

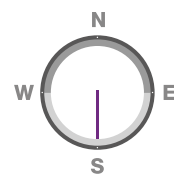
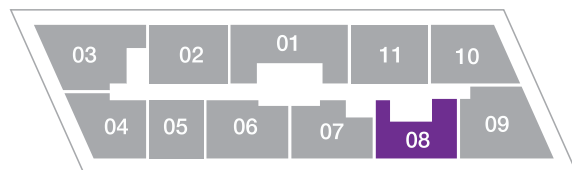
Residence Interior	961 Sq Ft	89 Sq M
Outdoor Living	235 Sq Ft	22 Sq M
<b>Total:</b>	<b>1,196 Sq Ft</b>	<b>111 Sq M</b>

*One*

**METROPICA**  
RESIDENCES  
DESIGN BY YOO



FLOORS: 26



Line 03

# 2 Bedrooms / 2.5 Baths + Den

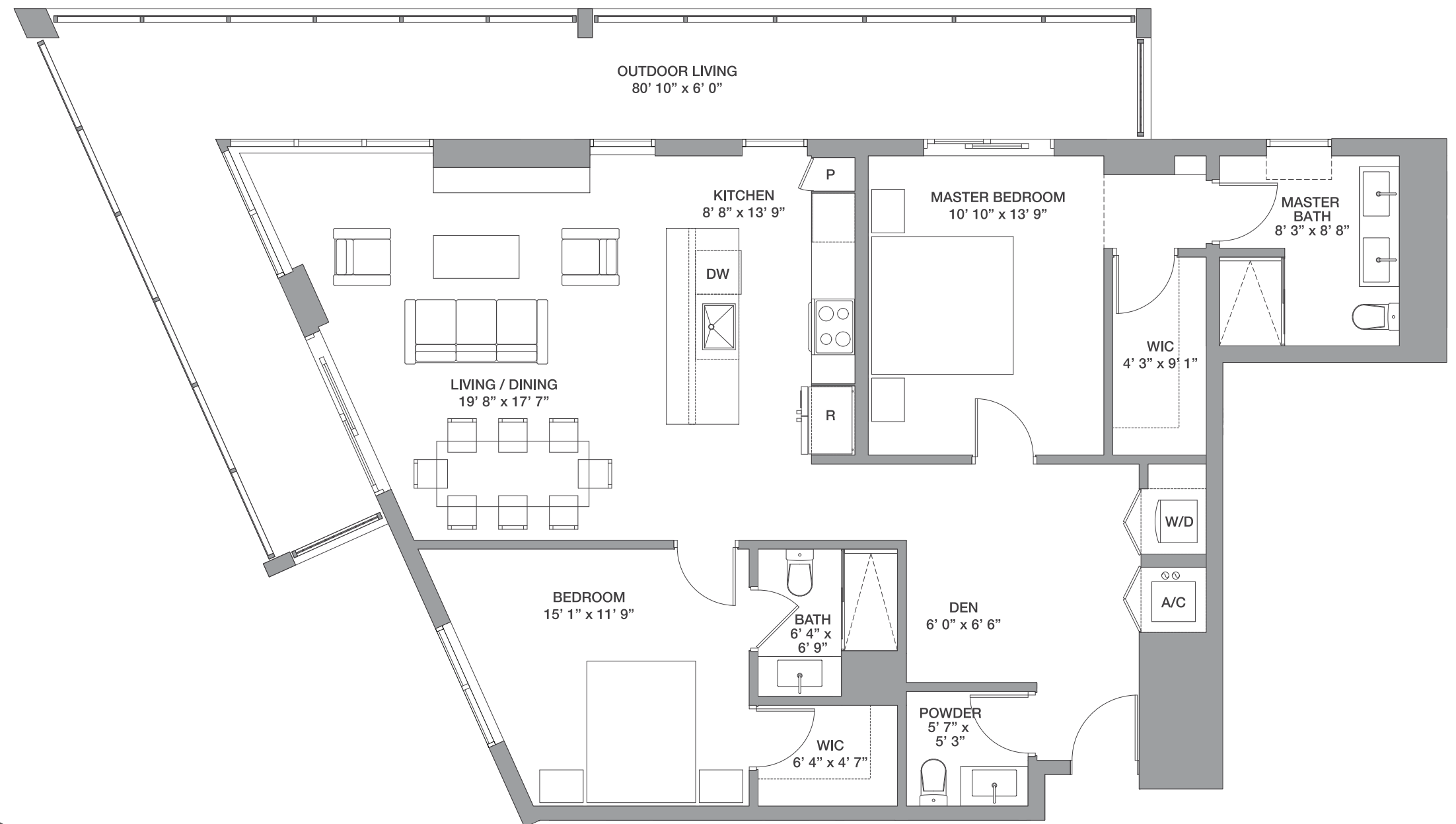
Floor: 8

Residence Interior	1,267 Sq Ft	118 Sq M
Outdoor Living	429 Sq Ft	40 Sq M
<b>Total:</b>	<b>1,696 Sq Ft</b>	<b>158 Sq M</b>

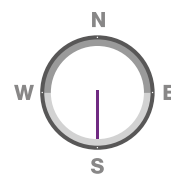
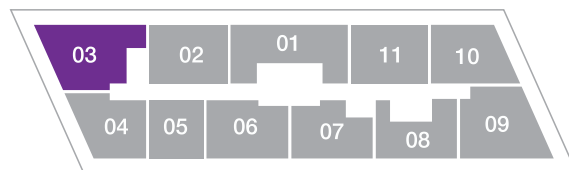


METROPICA  
RESIDENCES

DESIGN BY YOO



FLOORS: 8



Line 07

# 3 Bedrooms / 2.5 Baths

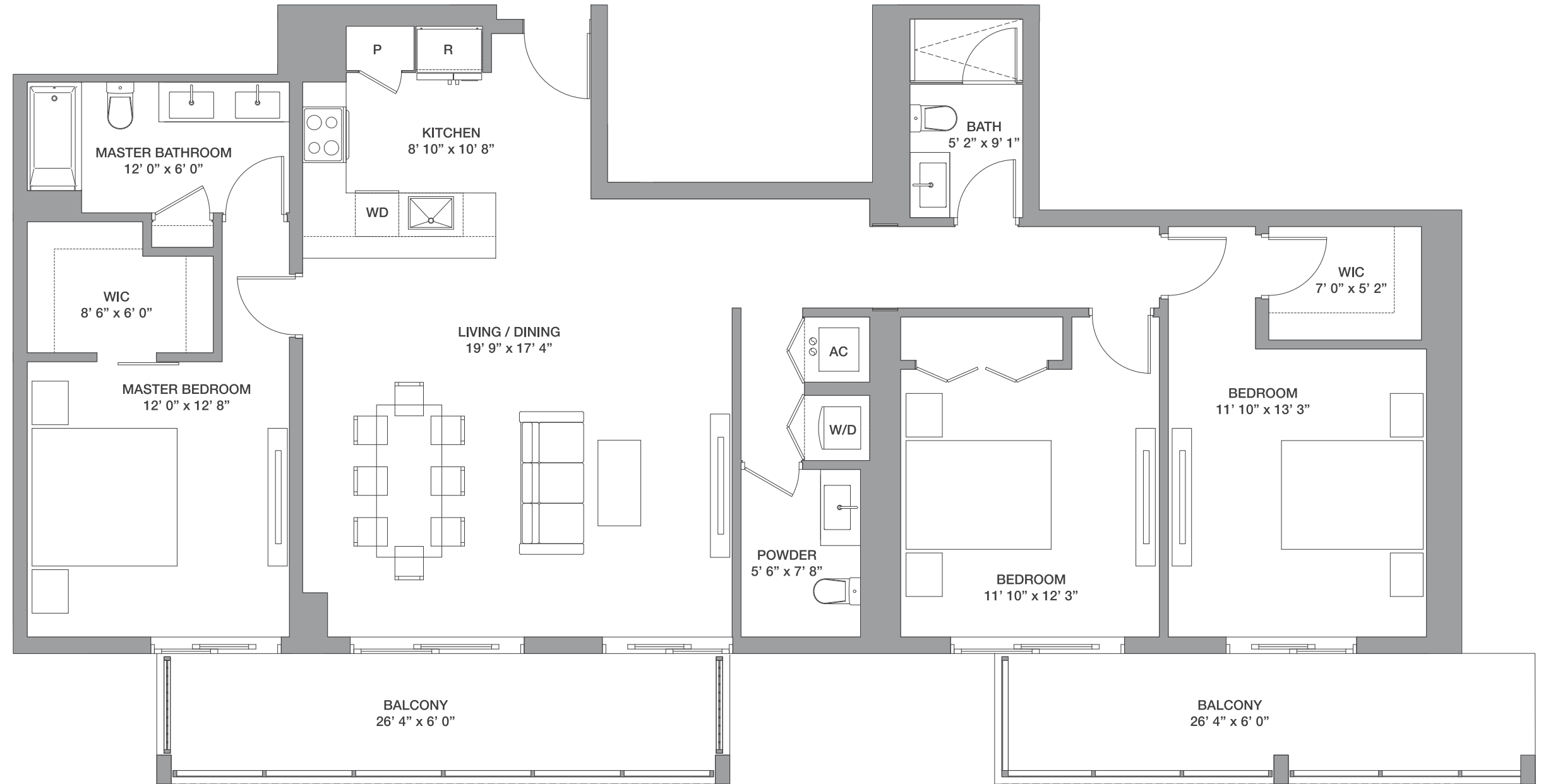
Floor: 6

Residence Interior	1,629 Sq Ft	151 Sq M
Outdoor Living	316 Sq Ft	29 Sq M
<b>Total:</b>	<b>1,935 Sq Ft</b>	<b>180 Sq M</b>

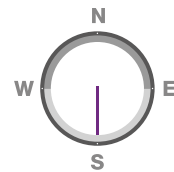
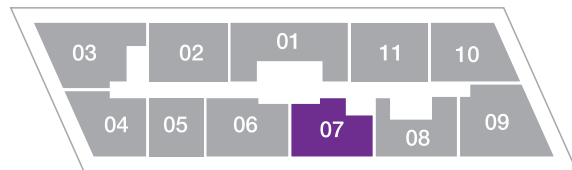


METROPICA  
RESIDENCES

DESIGN BY YOO



FLOORS: 6

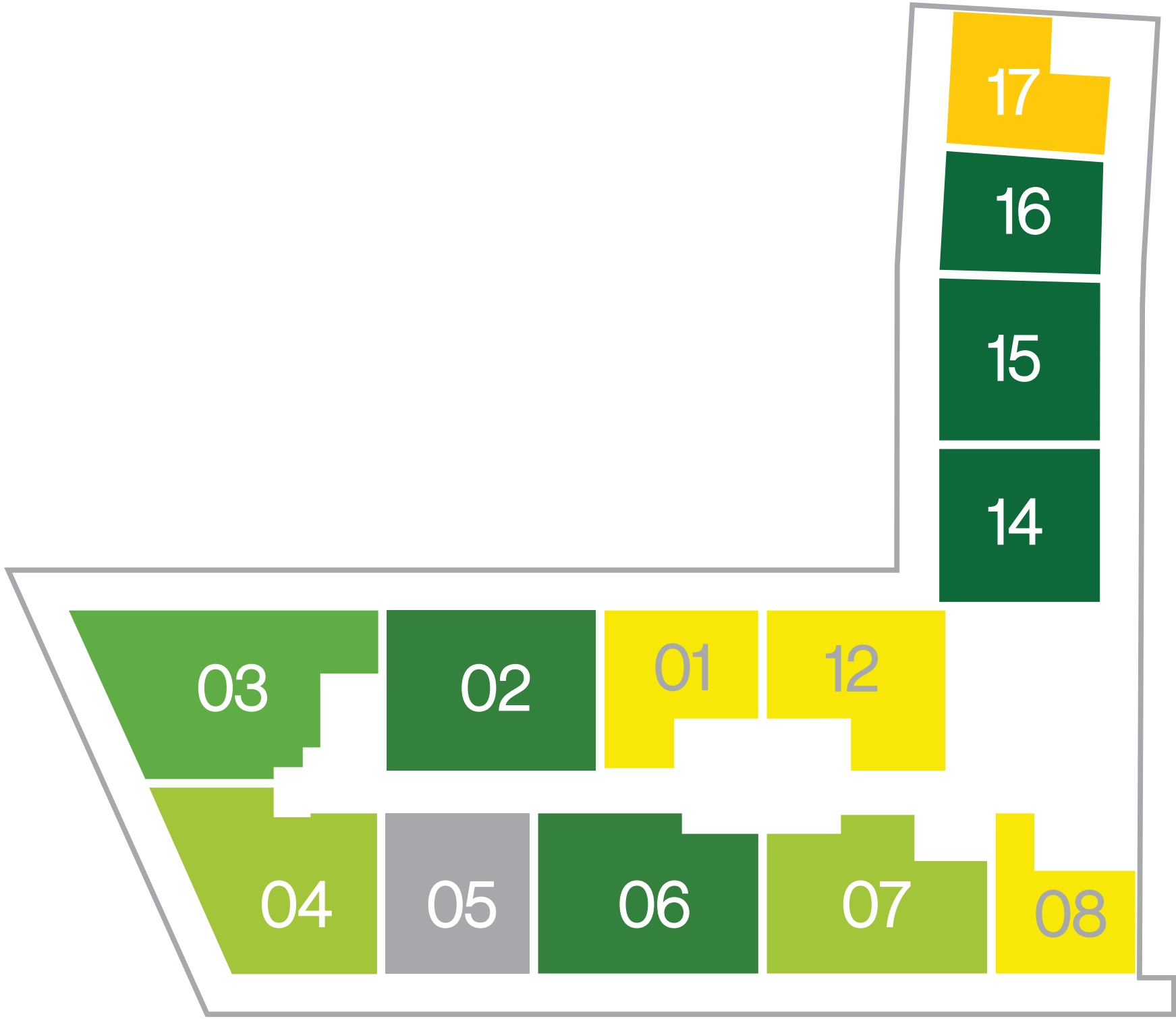


Key Plan  
**Floors 2-5**



METROPICA  
RESIDENCES

DESIGN BY YOO



- 1 Bedroom / 1 Bath
- 1 Bedroom / 1.5 Bath
- 2 Bedrooms / 2 Baths
- 2 Bedrooms / 1.5 Bath + Den
- 2 Bedrooms / 2 Baths + Den
- 2 Bedrooms / 2.5 Bath + Den

Key Plan  
**Floor 6**

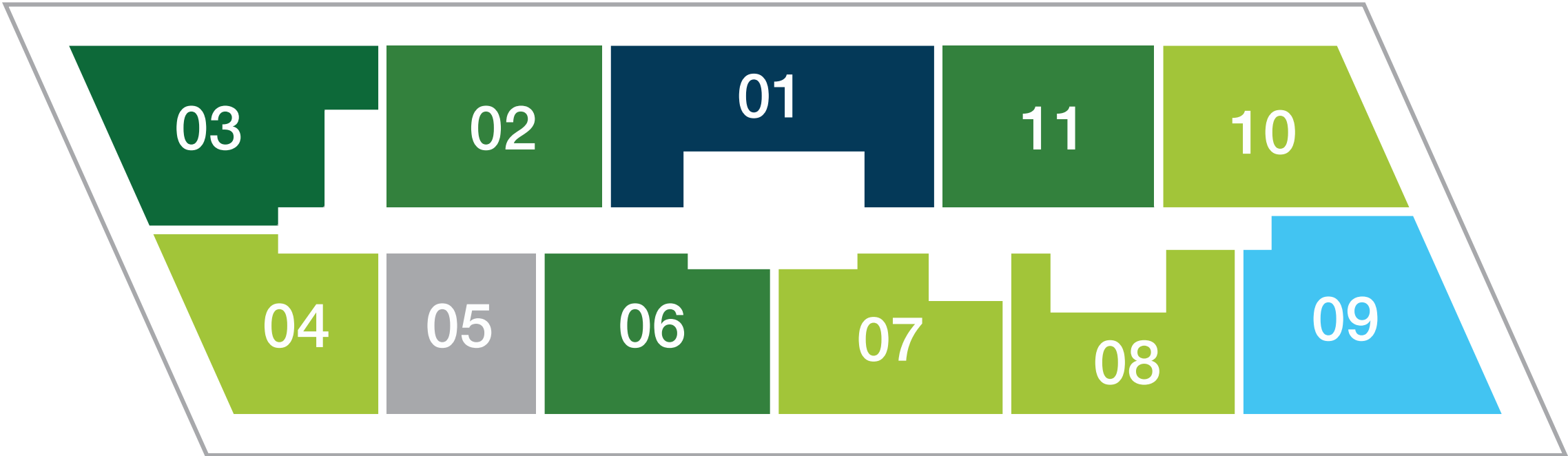


METROPICA  
RESIDENCES



- 1 Bedroom / 1 Bath
- 1 Bedroom / 1.5 Bath + Den
- 2 Bedrooms / 2 Baths
- 2 Bedrooms / 2 Baths + Den
- 2 Bedrooms / 2.5 Bath + Den

Key Plan  
**Floors 8-26**



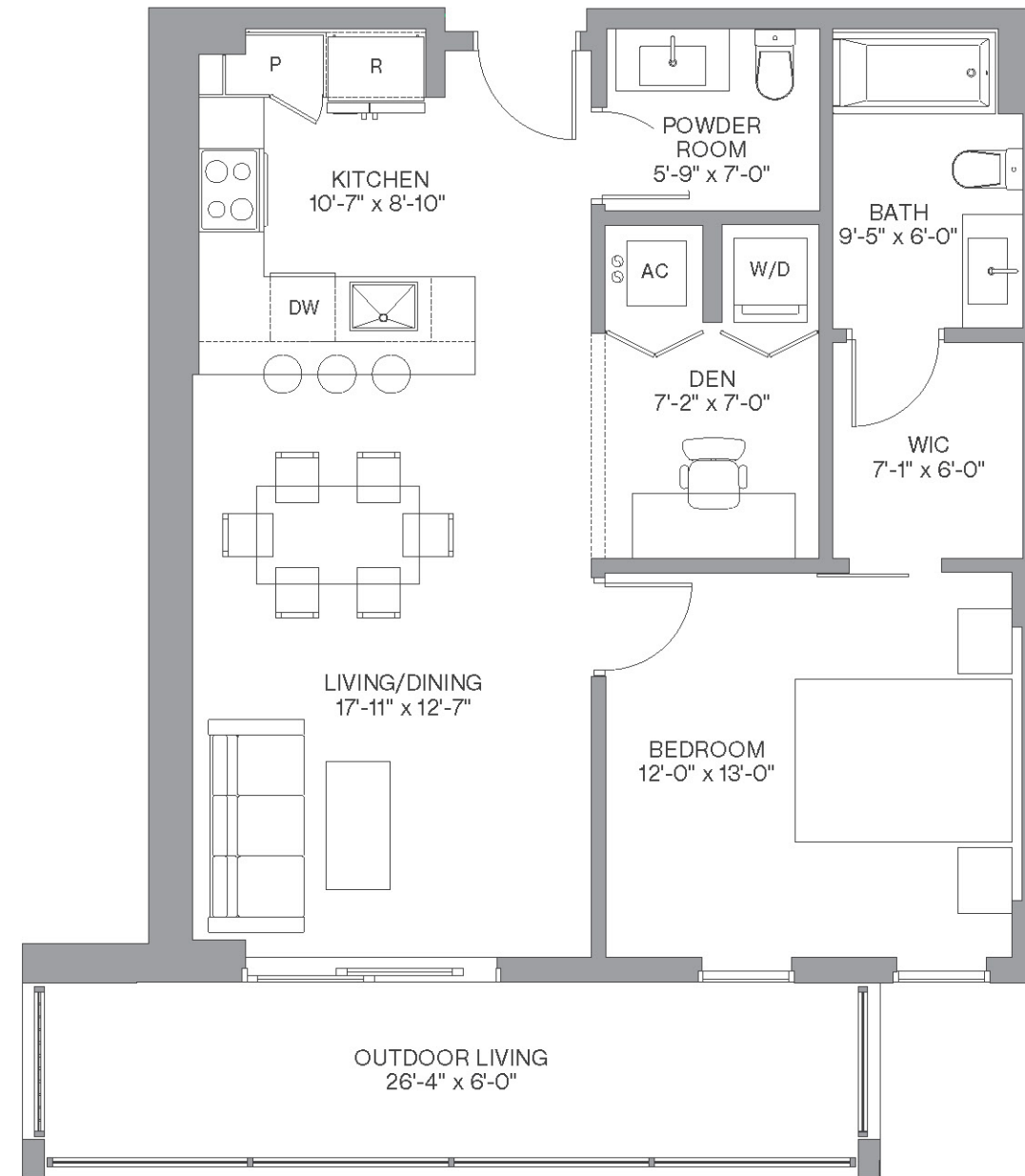
- 2 Bedrooms / 2 Baths
- 2 Bedrooms / 2 Baths + Den
- 2 Bedrooms / 2.5 Bath + Den
- 3 Bedrooms / 3 Baths
- 3 Bedrooms / 3 Baths + Den

# A1 & A8 / Line 05

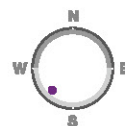
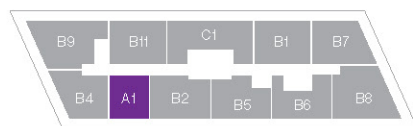
## 1 Bedroom / 1.5 Baths + Den

Floors: 2 - 26

Residence Interior	779 - 780 Sq Ft	72 - 73 Sq M
Outdoor Living	158 Sq Ft	15 Sq M
<b>Total :</b>	<b>937 - 938 Sq Ft</b>	<b>87 - 88 Sq M</b>



FLOORS 2 - 26



We are pledged to the letter and spirit of U.S. policy for the achievement of equal housing throughout the Nation. We encourage and support an affirmative advertising, marketing and sales program in which there are no barriers to obtaining housing because of race, color, sex, religion, handicap, familial status or national origin. Any stated square footages, dimensions and other measurements reflected herein are based on preliminary pre-construction plans, which are subject to change without notice and will vary with actual construction. Any stated square footages, dimensions and other measurements of units are measured to the exterior boundaries of the exterior walls and the centerline of interior demising walls between units and will vary from the dimensions of the unit that would be determined by using the description and definition of the "Unit" as set forth in the Declaration of Condominium (the "Declaration") for the Condominium (which generally only includes the interior airspace between the perimeter walls and excludes all interior structural components and other common elements). This method of measurement is generally used in sales materials and is provided to allow a prospective purchaser to compare the units in the Condominium with units in other condominium projects that utilize the same method. Terraces, patios and balconies are not part of the unit. Measurements and dimensions of rooms are generally taken at the farthest points of each given room (as if the room were a perfect rectangle), without regard for any cutouts, soffits or other variations. Accordingly, the square footage of the actual room will typically be smaller than the product obtained by multiplying the stated length and width. For the square footage of the units based on the definition of "Unit" in the Declaration, refer to Exhibit "2" to the Declaration included in the Condominium Documents. Each purchaser is advised that there are various methods for calculating the square footage of a Unit, and that, depending on the method of calculation, the quoted square footage of a Unit in advertising materials may vary from the square footage quoted in the Prospectus and Declaration. The dimensions of the Unit shown in these floor plans have been calculated from the exterior boundaries of the exterior walls to the centerline of interior demising walls, including common elements such as structural walls and other interior structural components of the building, and in fact vary from the dimensions that would be determined by using the description and definition of the "Unit" set forth in the Prospectus and Declaration. The area of the Unit as defined in the Prospectus and Declaration is less than the square footage reflected here. Measurements of rooms set forth on this floor plan are generally taken at the greatest points (as if the room were a perfect rectangle), without regard for any cutouts, meaning the usable area of the actual room will typically be smaller than calculated by multiplying the length times width. All dimensions are approximate, may vary with actual construction, and are subject to development plans which may change. The furnishings and décor illustrated or depicted are not included with the purchase of the Unit. See Prospectus for information on what is offered with the Unit and the Unit square footage and dimensions.



Line 11

# 2 Bedrooms / 2 Baths + Den

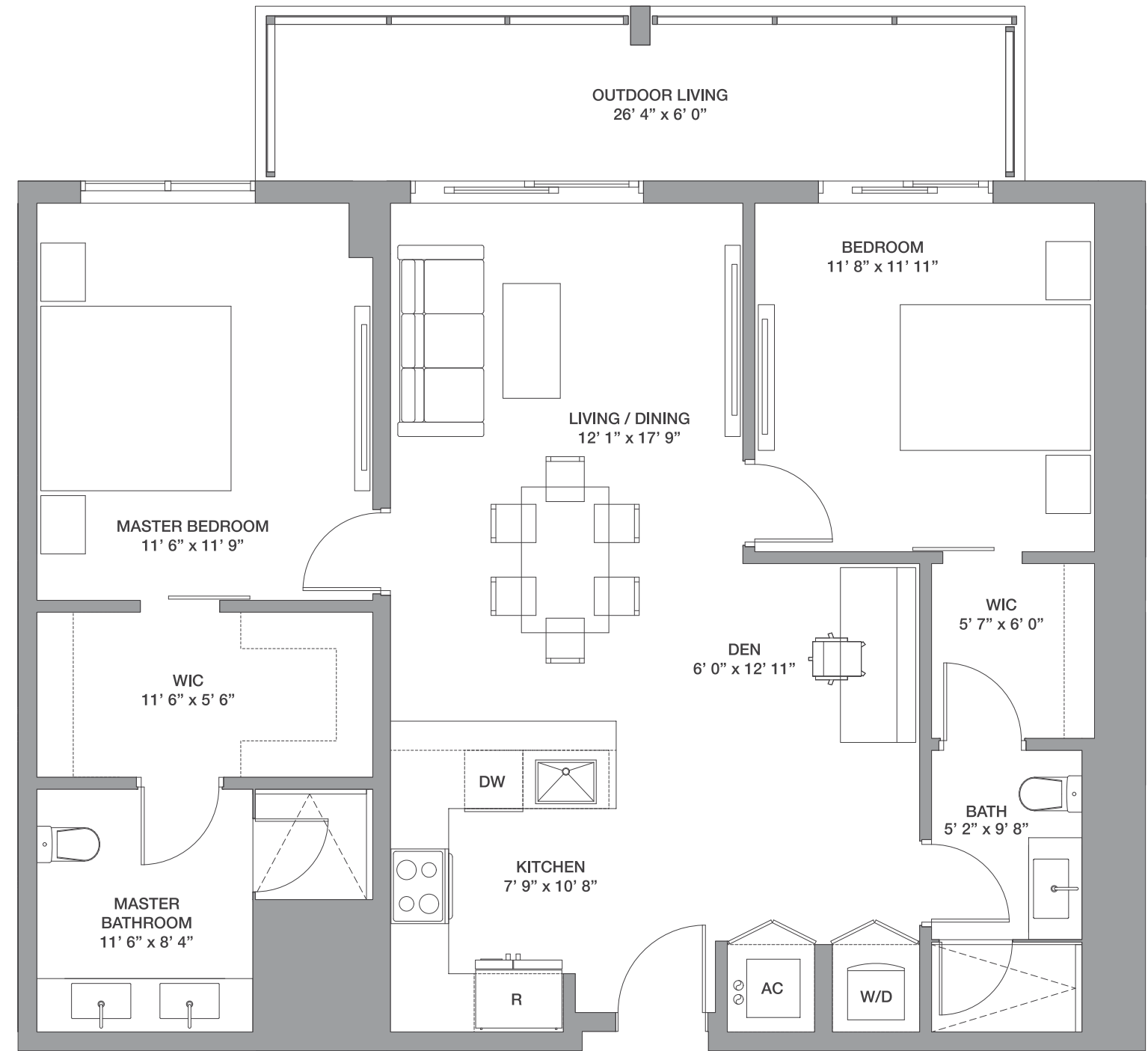
Floors: 8 - 26

Residence Interior	1,086 Sq Ft	101 Sq M
Outdoor Living	158 Sq Ft	15 Sq M
<b>Total:</b>	<b>1,244 Sq Ft</b>	<b>116 Sq M</b>

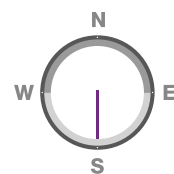
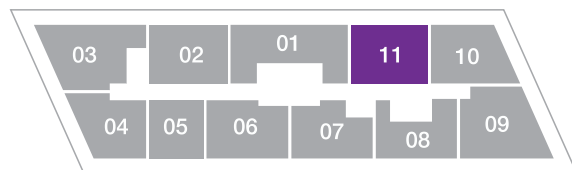


METROPICA  
RESIDENCES

DESIGN BY YOO



FLOORS: 8 - 26



Line 06

# 2 Bedrooms / 2 Baths + Den

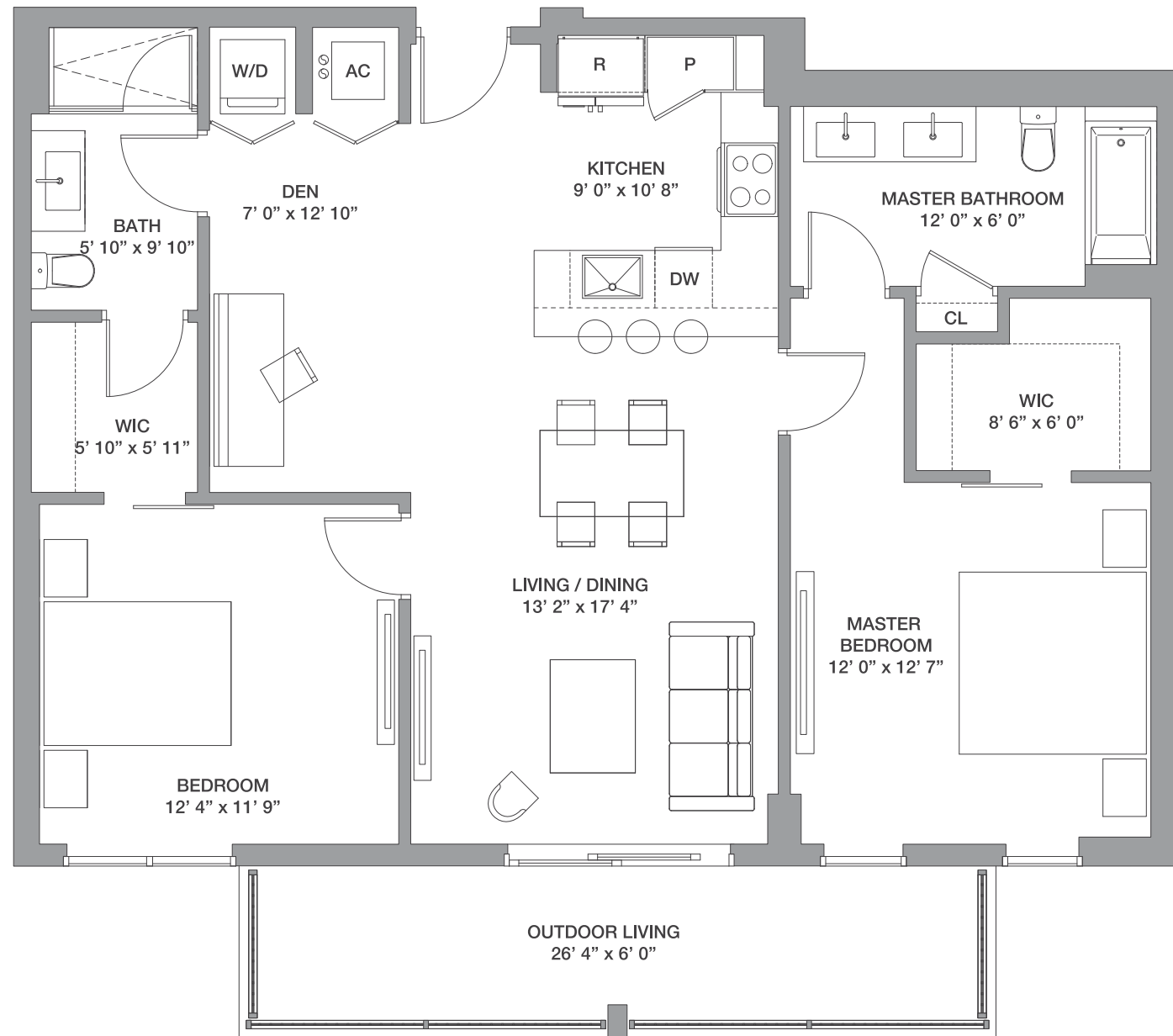
Floors: 2 -26

Residence Interior	1,133 SqFt	101 - 105 SqM
Outdoor Living	158 SqFt	15 SqM
<b>Total:</b>	<b>1,245 - 1,291 SqFt</b>	<b>116 - 120 SqM</b>

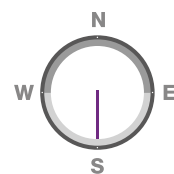
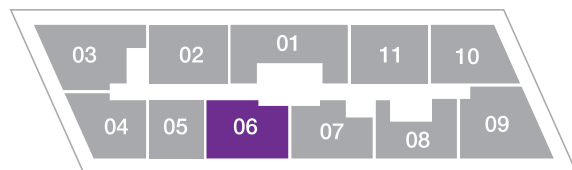


METROPICA  
RESIDENCES

DESIGN BY YOO



FLOORS: 2 - 26



# Line 04

## 2 Bedrooms / 2 Baths

Floors: 2 - 19

Residence Interior	1,078 Sq Ft	100 Sq M
Outdoor Living	313 Sq Ft	29 Sq M
<b>Total:</b>	<b>1,391 Sq Ft</b>	<b>129 Sq M</b>

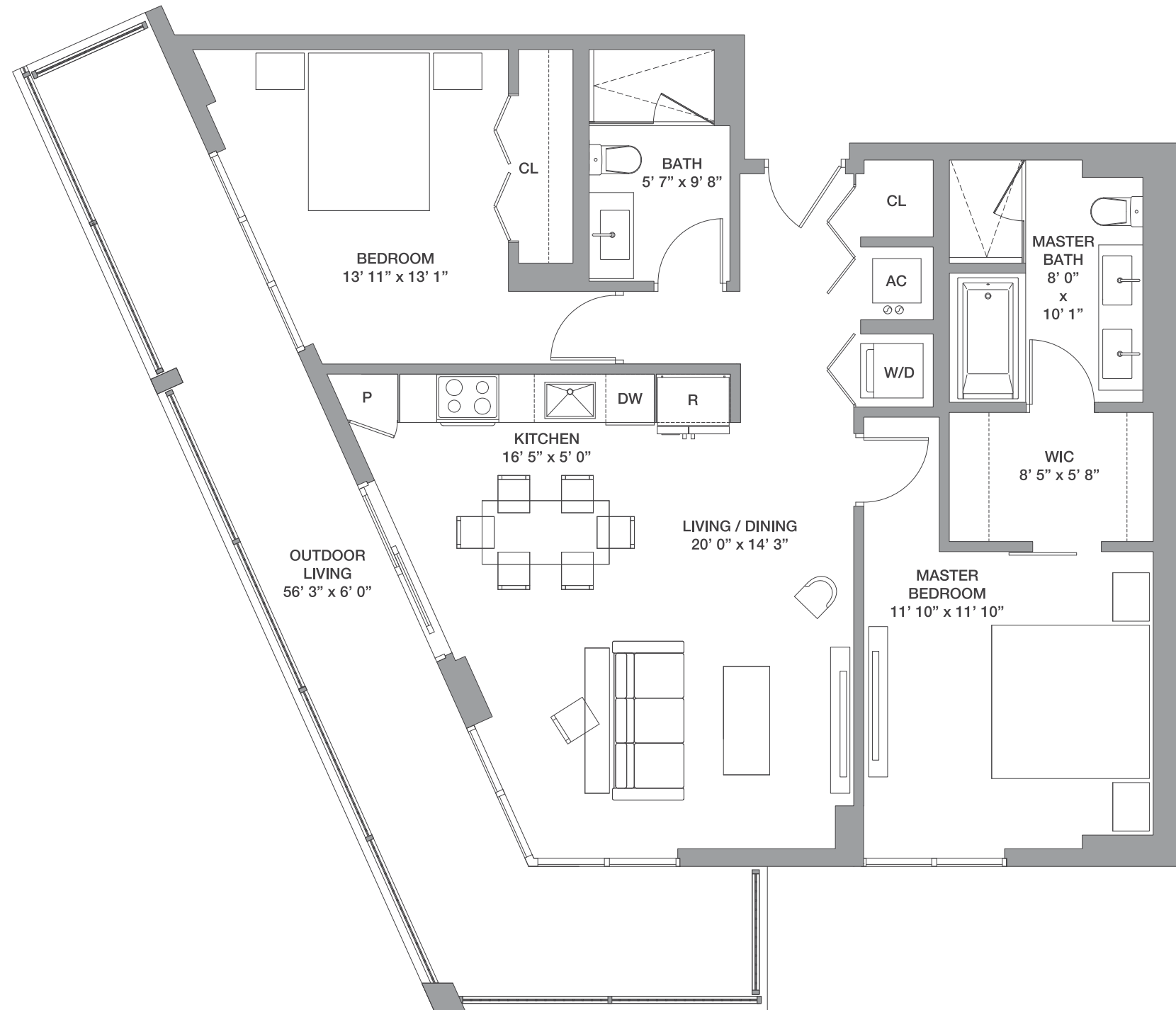
Floors: 20 - 26

Residence Interior	1,087 Sq Ft	101 Sq M
Outdoor Living	313 Sq Ft	29 Sq M
<b>Total:</b>	<b>1,399 Sq Ft</b>	<b>130 Sq M</b>

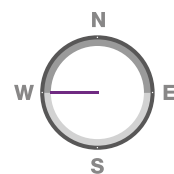
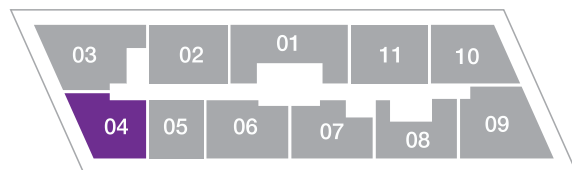


METROPICA  
RESIDENCES

DESIGN BY YOO



FLOORS: 2 - 26

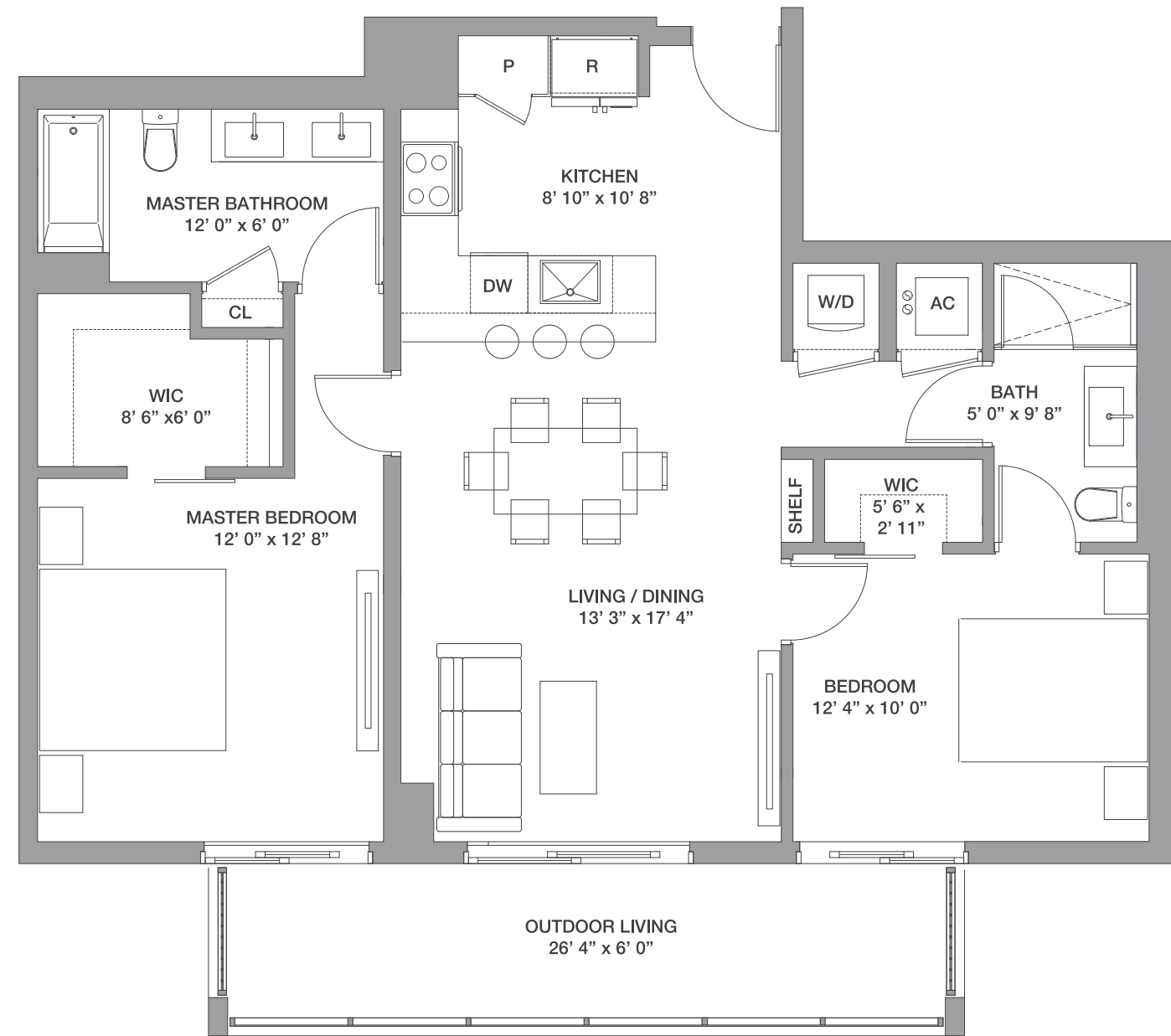


Line 07

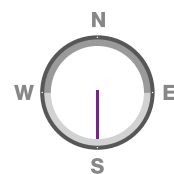
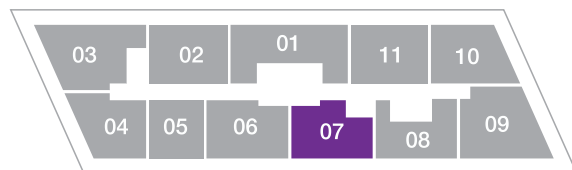
# 2 Bedrooms / 2 Baths

Floors: 2 - 26

Residence Interior	1,026Sq Ft	95 Sq M
Outdoor Living	158 Sq Ft	15 Sq M
<b>Total:</b>	<b>1,184 Sq Ft</b>	<b>110 Sq M</b>



FLOORS: 2 - 26

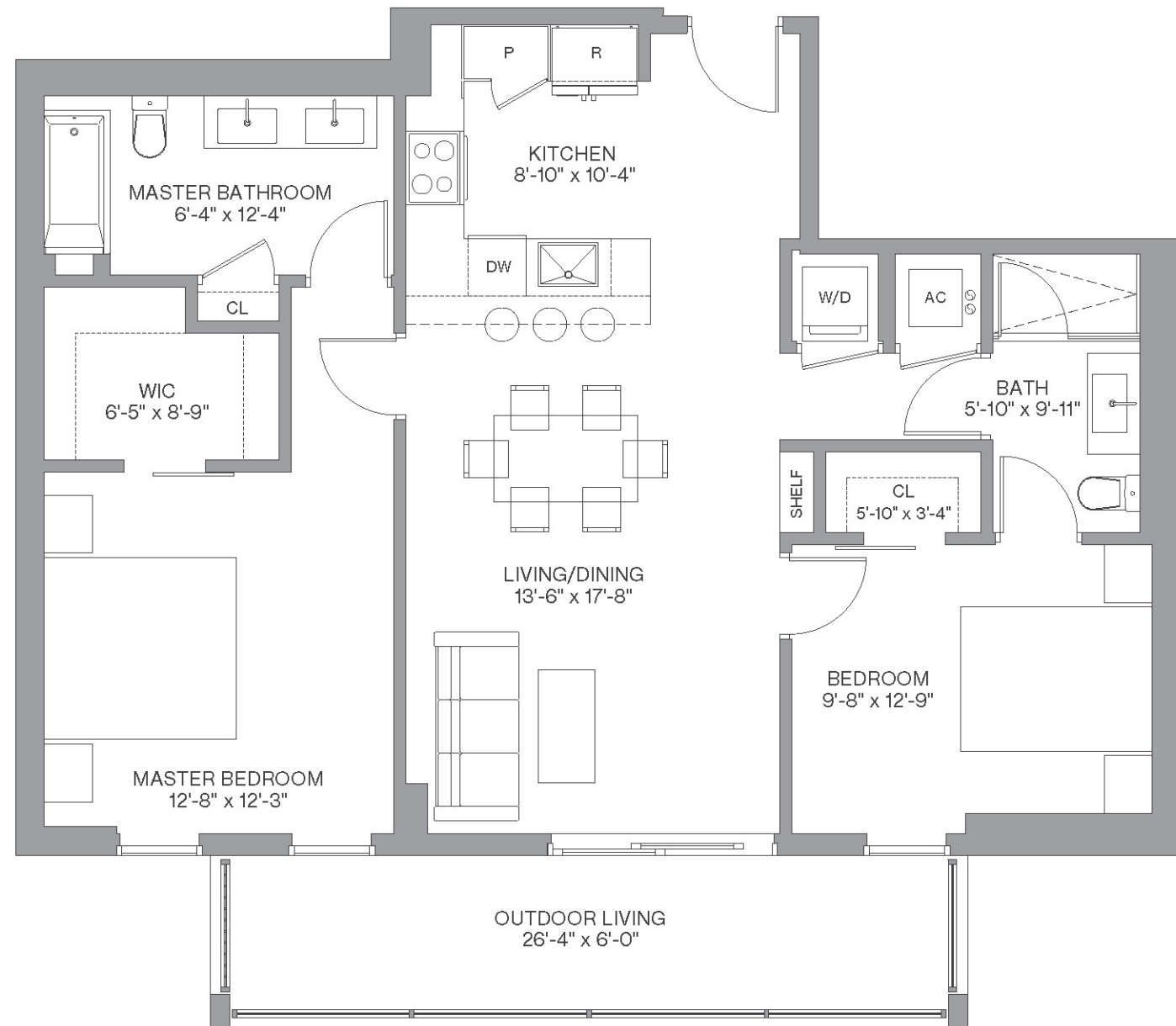


# B5 & B17 / Line 07

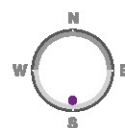
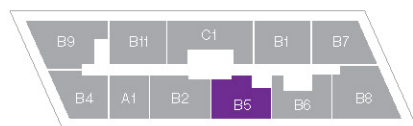
## 2 Bedrooms / 2 Baths

Floors: 2 - 26

Residence Interior	1,033 Sq Ft	96 Sq M
Outdoor Living	158 Sq Ft	15 Sq M
<b>Total :</b>	<b>1,191 Sq Ft</b>	<b>111 Sq M</b>



FLOORS 2 - 26



We are pledged to the letter and spirit of U.S. policy for the achievement of equal housing throughout the Nation. We encourage and support an affirmative advertising, marketing and sales program in which there are no barriers to obtaining housing because of race, color, sex, religion, handicap, familial status or national origin. Any stated square footages, dimensions and other measurements reflected herein are based on preliminary pre-construction plans, which are subject to change without notice and will vary with actual construction. Any stated square footages, dimensions and other measurements of units are measured to the exterior boundaries of the exterior walls and the centerline of interior demising walls between units and will vary from the dimensions of the unit that would be determined by using the description and definition of the "Unit" as set forth in the Declaration of Condominium (the "Declaration") for the Condominium (which generally only includes the interior airspace between the perimeter walls and excludes all interior structural components and other common elements). This method of measurement is generally used in sales materials and is provided to allow a prospective purchaser to compare the units in the Condominium with units in other condominium projects that utilize the same method. Terraces, patios and balconies are not part of the unit. Measurements and dimensions of rooms are generally taken at the farthest points of each given room (as if the room were a perfect rectangle), without regard for any cutouts, soffits or other variations. Accordingly, the square footage of the actual room will typically be smaller than the product obtained by multiplying the stated length and width. For the square footage of the units based on the definition of "Unit" in the Declaration, refer to Exhibit "2" to the Declaration included in the Condominium Documents. Each purchaser is advised that there are various methods for calculating the square footage of a Unit, and that, depending on the method of calculation, the quoted square footage of a Unit in advertising materials may vary from the square footage quoted in the Prospectus and Declaration. The dimensions of the Unit shown in these floor plans have been calculated from the exterior boundaries of the exterior walls to the centerline of interior demising walls, including common elements such as structural walls and other interior structural components of the building, and in fact vary from the dimensions that would be determined by using the description and definition of the "Unit" set forth in the Prospectus and Declaration. The area of the Unit as defined in the Prospectus and Declaration is less than the square footage reflected here. Measurements of rooms set forth on this floor plan are generally taken at the greatest points (as if the room were a perfect rectangle), without regard for any cutouts, meaning the usable area of the actual room will typically be smaller than calculated by multiplying the length times width. All dimensions are approximate, may vary with actual construction, and are subject to development plans which may change. The furnishings and décor illustrated or depicted are not included with the purchase of the Unit. See Prospectus for information on what is offered with the Unit and the Unit square footage and dimensions.

Line 08

# 2 Bedrooms / 2 Baths

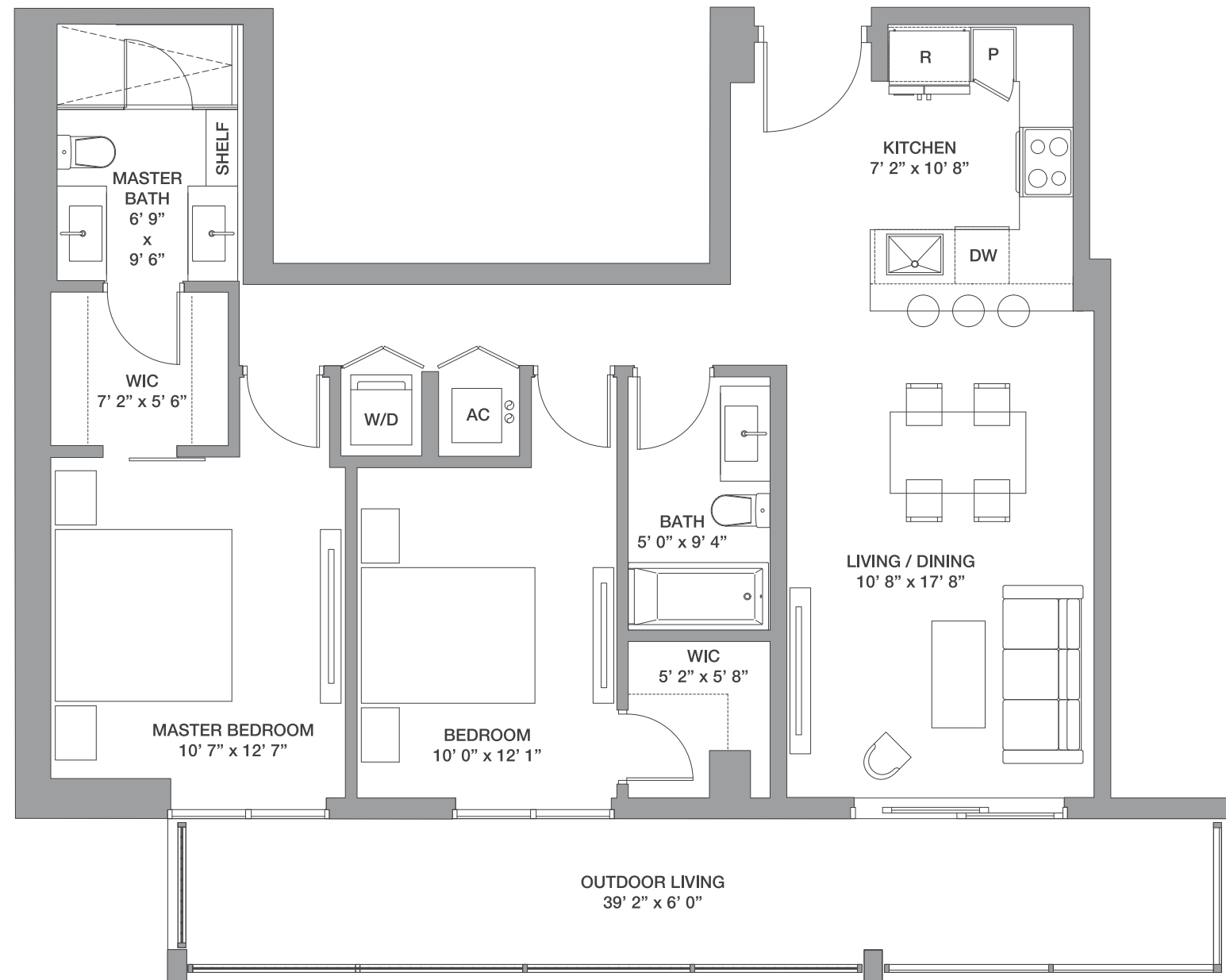
Floors: 9 -25

Residence Interior	980 SqFt	91 SqM
Outdoor Living	235 SqFt	22 SqM
<b>Total:</b>	<b>1,215 SqFt</b>	<b>113 SqM</b>

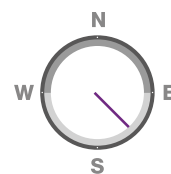
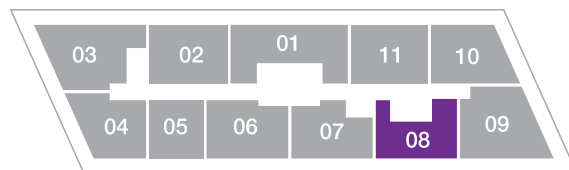


METROPICA  
RESIDENCES

DESIGN BY YOO



FLOORS: 9 - 25



# Line 10

## 2 Bedrooms / 2 Baths

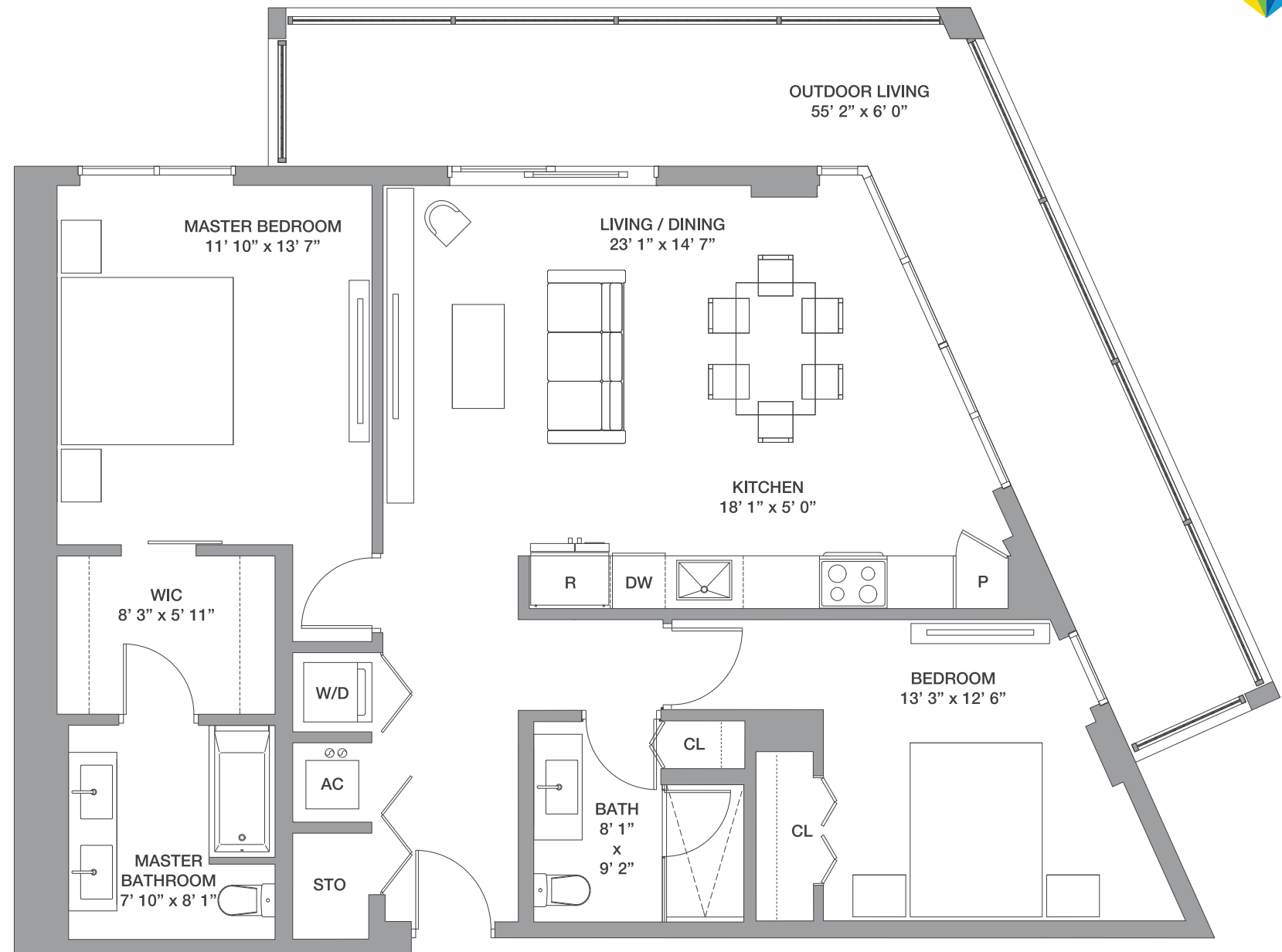
Floors: 8 -25

Residence Interior	1,106 SqFt	103 SqM
Outdoor Living	308 SqFt	29 SqM
<b>Total:</b>	<b>1,414 SqFt</b>	<b>132 SqM</b>

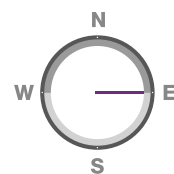
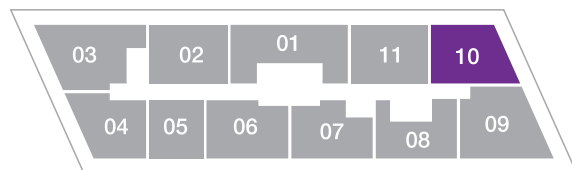


METROPICA  
RESIDENCES

DESIGN BY YOO



FLOORS: 8 - 25



Line 09

# 3 Bedrooms / 3 Baths

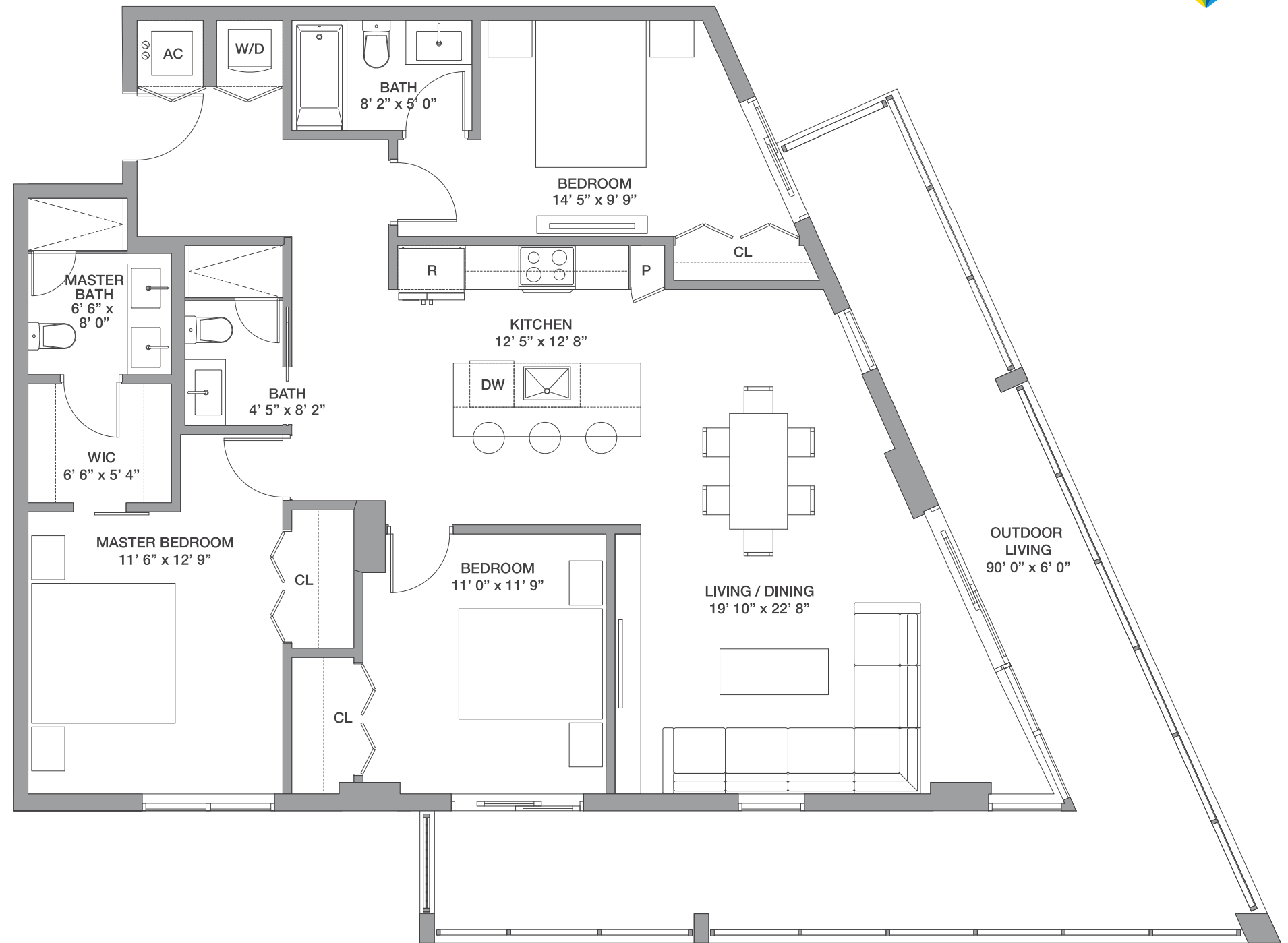
Floors: 8 - 25

Residence Interior	1,394 Sq Ft	130 Sq M
Outdoor Living	436 Sq Ft	41 Sq M
<b>Total:</b>	<b>1,830 Sq Ft</b>	<b>171 Sq M</b>

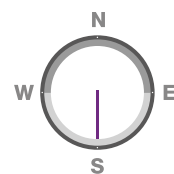
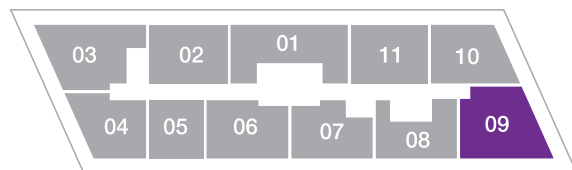
*One*

**METROPICA**  
RESIDENCES

DESIGN BY YOO



FLOORS: 8 - 25



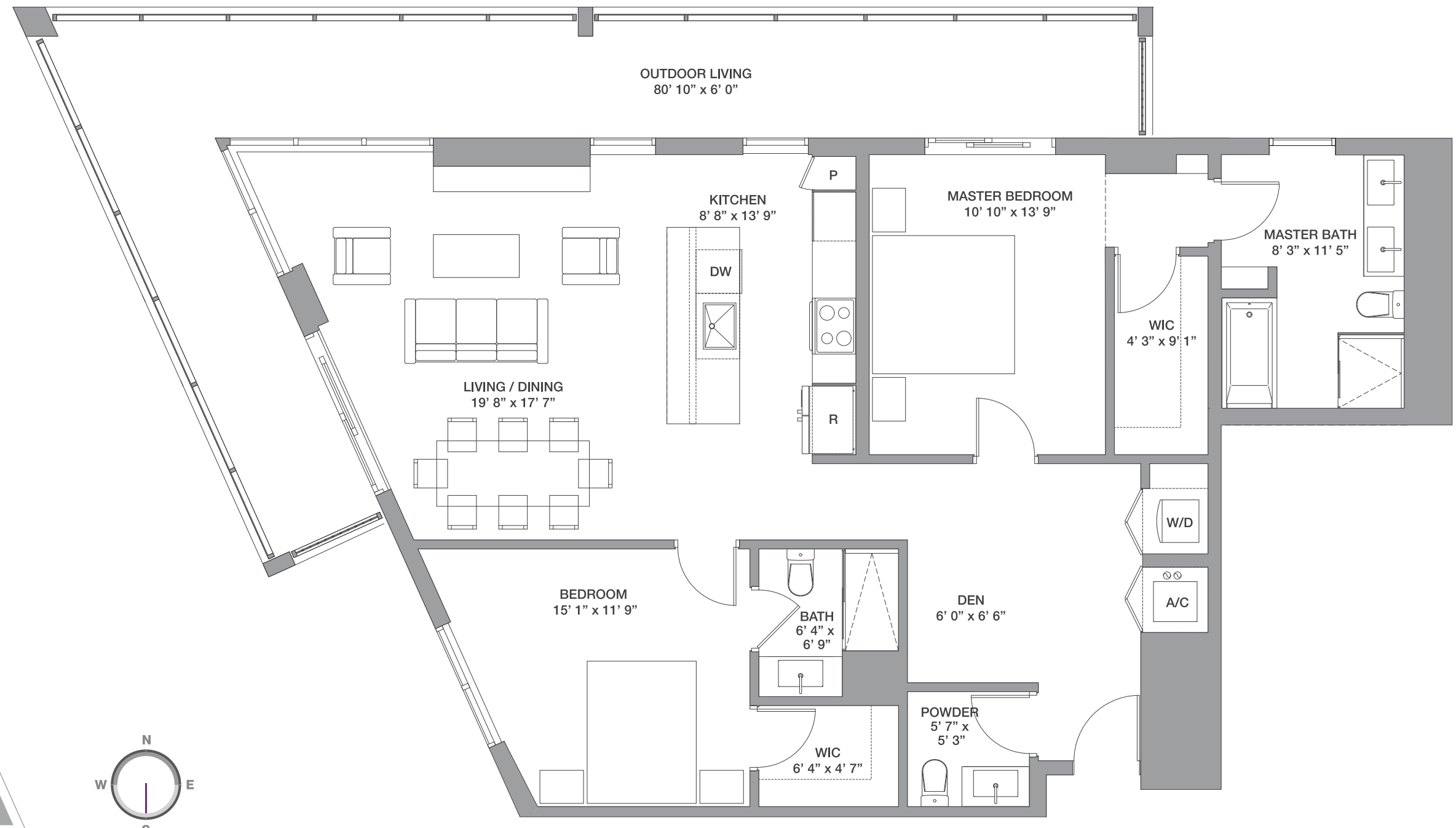


Line 03

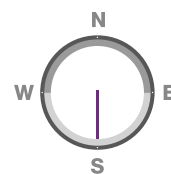
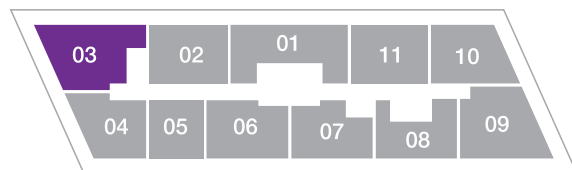
# 2 Bedrooms / 2.5 Baths + Den

Floors: 9 - 25

Residence Interior	1,294 Sq Ft	120 Sq M
Outdoor Living	429 Sq Ft	40 Sq M
<b>Total:</b>	<b>1,723 Sq Ft</b>	<b>160 Sq M</b>



FLOORS: 9 - 25



Line 02

# 2 Bedrooms / 2 Baths + Den

Floors: 2 - 26

Residence Interior	1,121 Sq Ft	104 Sq M
Outdoor Living	158 Sq Ft	15 Sq M
<b>Total:</b>	<b>1,279 Sq Ft</b>	<b>119 Sq M</b>

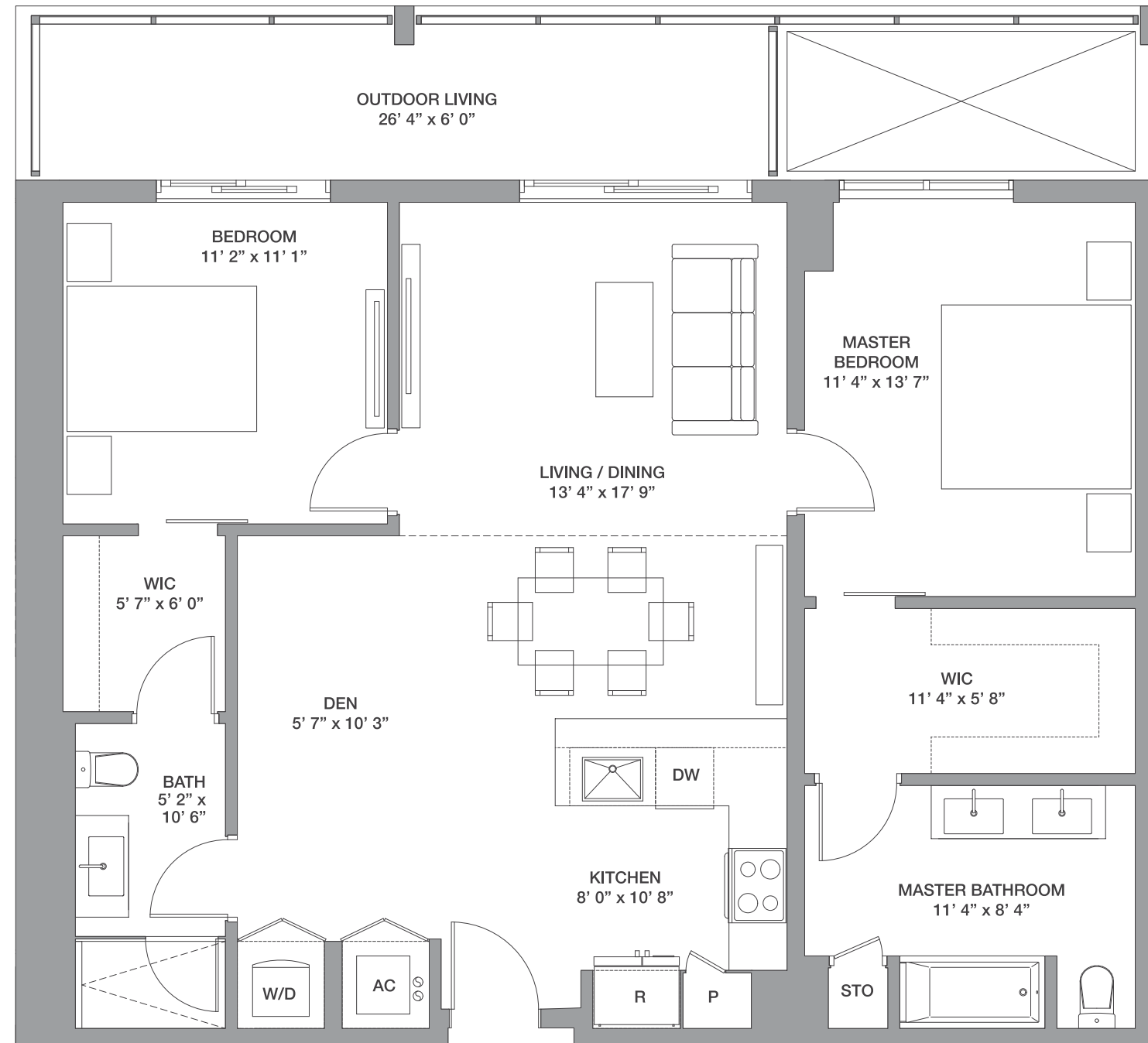
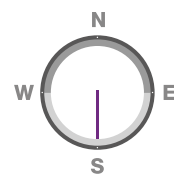
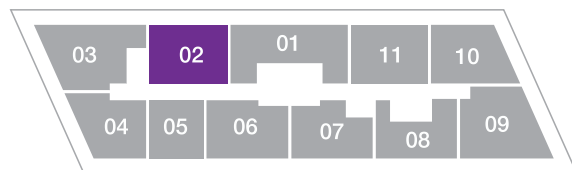
*One*

**METROPICA**  
RESIDENCES

DESIGN BY YOO



FLOORS: 2 - 26



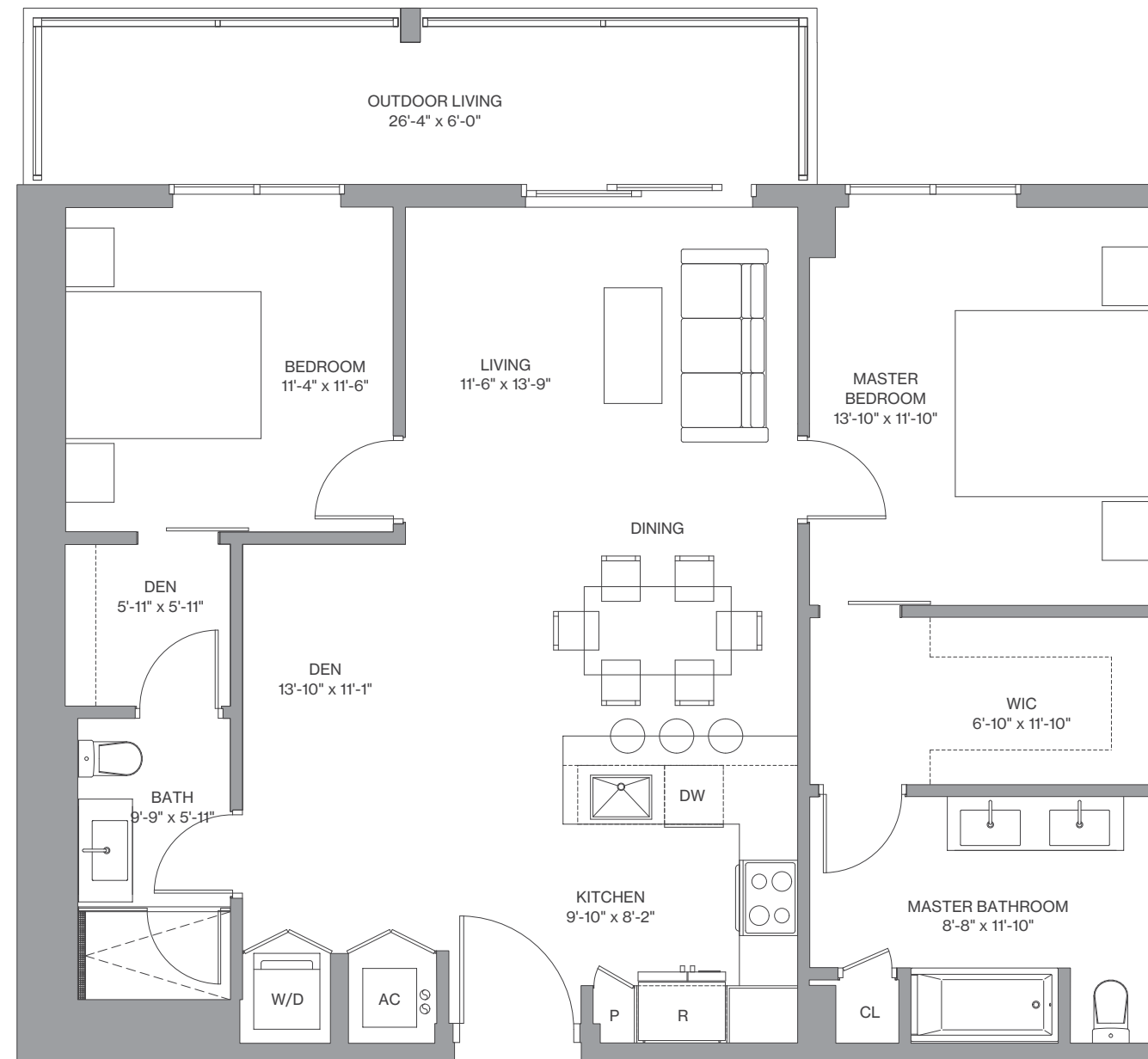
# B1 & B11 / Line 11, Line 02

## 2 Bedrooms / 2 Baths + Den

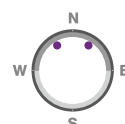
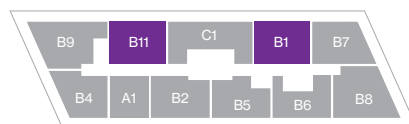


Floors: 2 - 26

Residence Interior	1,093 - 1,118 Sq Ft	101 -104 Sq M
Outdoor Living	156 -158 Sq Ft	14 -15 Sq M
<b>Total :</b>	<b>1,249 - 1,276 Sq Ft</b>	<b>115 - 119 Sq M</b>



FLOORS 2 - 26



We are pledged to the letter and spirit of U.S. policy for the achievement of equal housing throughout the Nation. We encourage and support an affirmative advertising, marketing and sales program in which there are no barriers to obtaining housing because of race, color, sex, religion, handicap, familial status or national origin. Any stated square footages, dimensions and other measurements reflected herein are based on preliminary pre-construction plans, which are subject to change without notice and will vary with actual construction. Any stated square footages, dimensions and other measurements of units are measured to the exterior boundaries of the exterior walls and the centerline of interior demising walls between units and will vary from the dimensions of the unit that would be determined by using the description and definition of the "Unit" as set forth in the Declaration of Condominium (the "Declaration") for the Condominium (which generally only includes the interior airspace between the perimeter walls and excludes all interior structural components and other common elements). This method of measurement is generally used in sales materials and is provided to allow a prospective purchaser to compare the units in the Condominium with units in other condominium projects that utilize the same method. Terraces, patios and balconies are not part of the unit. Measurements and dimensions of rooms are generally taken at the farthest points of each given room (as if the room were a perfect rectangle), without regard for any cutouts, soffits or other variations. Accordingly, the square footage of the actual room will typically be smaller than the product obtained by multiplying the stated length and width. For the square footage of the units based on the definition of "Unit" in the Declaration, refer to Exhibit "2" to the Declaration included in the Condominium Documents. Each purchaser is advised that there are various methods for calculating the square footage of a Unit, and that, depending on the method of calculation, the quoted square footage of a Unit in advertising materials may vary from the square footage quoted in the Prospectus and Declaration. The dimensions of the Unit shown in these floor plans have been calculated from the exterior boundaries of the exterior walls to the centerline of interior demising walls, including common elements such as structural walls and other interior structural components of the building, and in fact vary from the dimensions that would be determined by using the description and definition of the "Unit" set forth in the Prospectus and Declaration. The area of the Unit as defined in the Prospectus and Declaration is less than the square footage reflected here. Measurements of rooms set forth on this floor plan are generally taken at the greatest points (as if the room were a perfect rectangle), without regard for any cutouts, meaning the usable area of the actual room will typically be smaller than calculated by multiplying the length times width. All dimensions are approximate, may vary with actual construction, and are subject to development plans which may change. The furnishings and décor illustrated or depicted are not included with the purchase of the Unit. See Prospectus for information on what is offered with the Unit and the Unit square footage and dimensions.

Line 03

# 2 Bedrooms / 2.5 Baths + Den

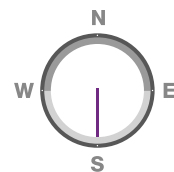
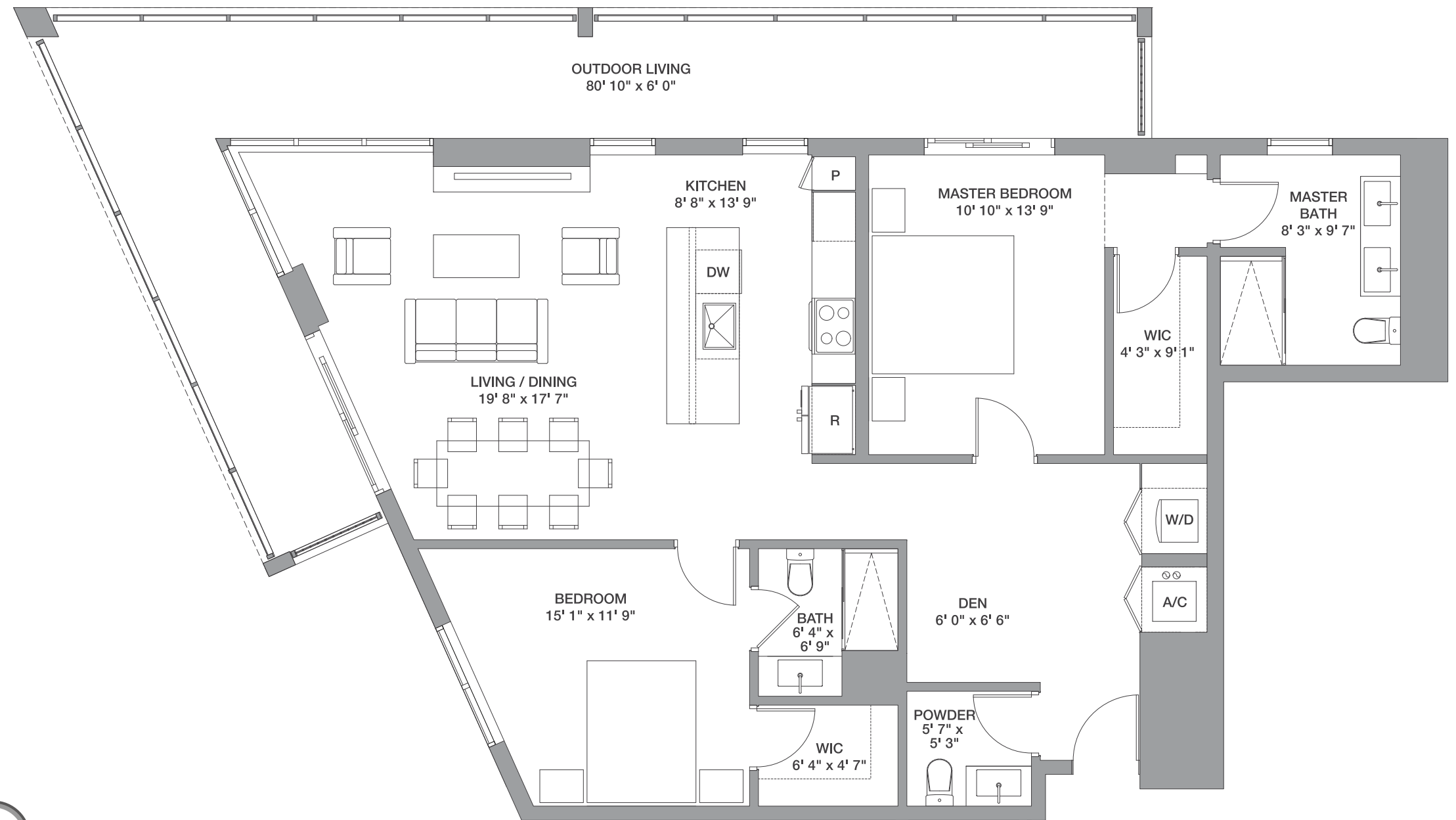
Floors: 6 & 26

Residence Interior	1,276 Sq Ft	119 Sq M
Outdoor Living	429 Sq Ft	40 Sq M
<b>Total:</b>	<b>1,705 Sq Ft</b>	<b>159 Sq M</b>



METROPICA  
RESIDENCES

DESIGN BY YOO



Line 01

# 3 Bedrooms / 3 Baths + Den

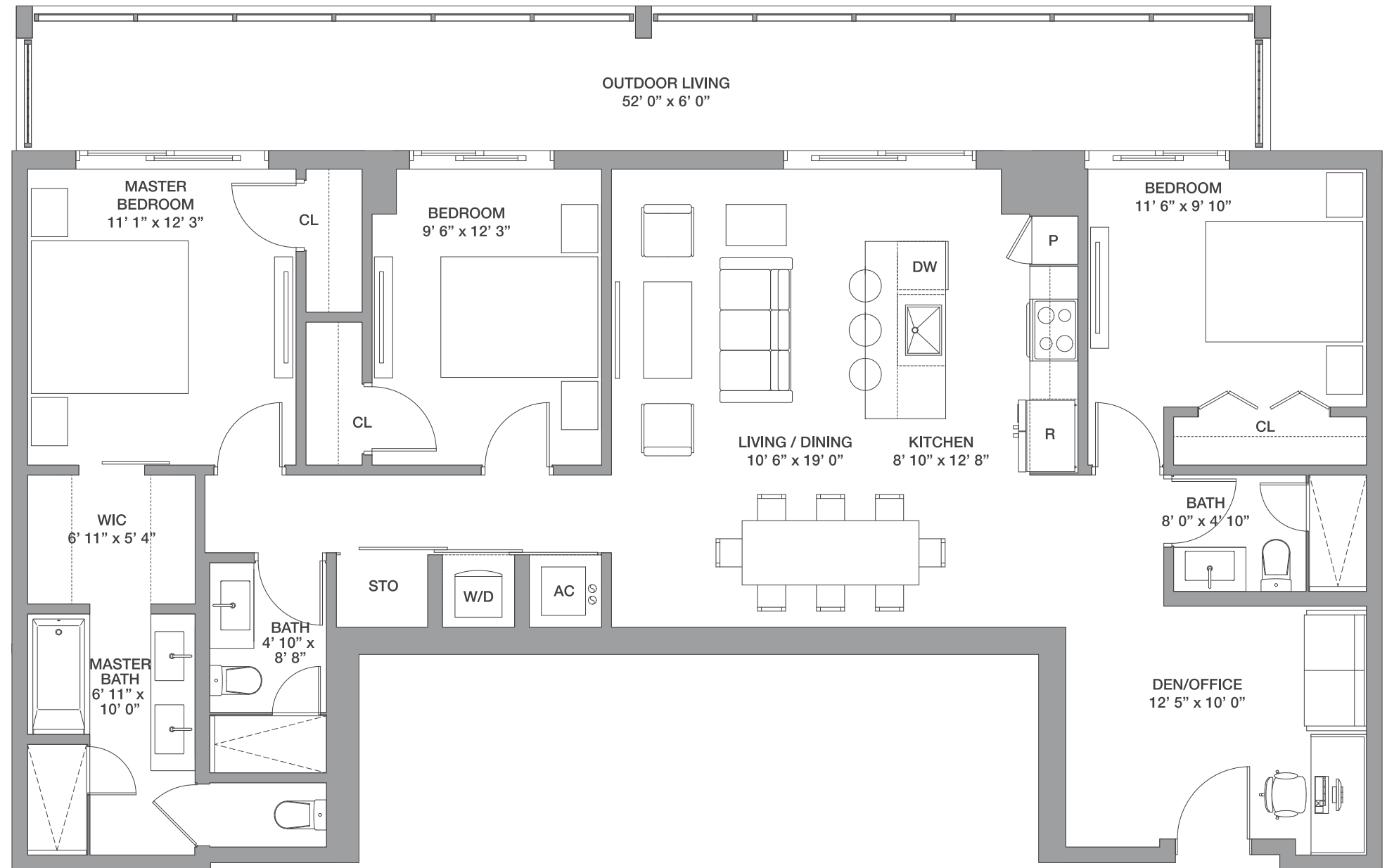
Floors: 8 - 26

Residence Interior	1,384 Sq Ft	129 Sq M
Outdoor Living	312 Sq Ft	29 Sq M
<b>Total:</b>	<b>1,696 Sq Ft</b>	<b>158 Sq M</b>



METROPICA  
RESIDENCES

DESIGN BY YOO



FLOORS: 8 - 26

