

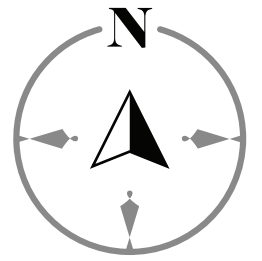
Exclusive Sales & Marketing by **ISGWORLD®**

**LEVEL 3**  
 17 UNITS  
 70 SPACES

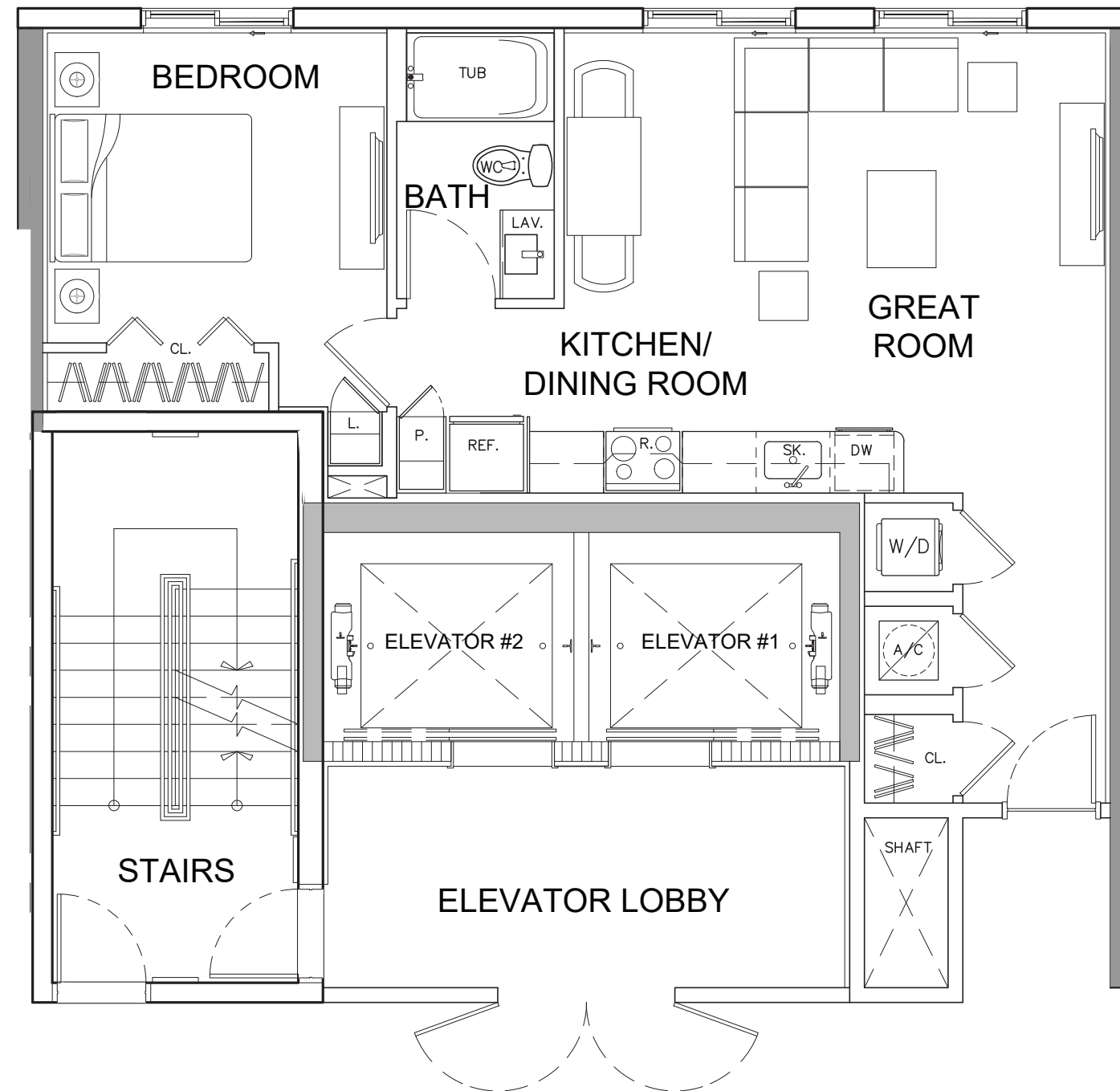
SCALE: 1" = 20'

All plans, features and amenities depicted herein are based upon preliminary development plans and are subject to change without notice in the manner provided in the offering documents by the developer. No guarantees or representations whatsoever are made that any plans, features, amenities or facilities will be provided or, if provided, will be of the same type, size, location or nature as depicted or described herein. The sketches, renderings, graphic materials, plans, specifications, terms, conditions and statements contained are proposed only, and we reserve the right to modify, revise or withdraw any or all of same in our sole discretion and without prior notice.

SHOMA  
bay



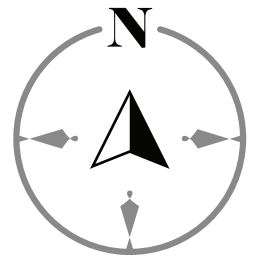
NORTH LINE KEY: (01)



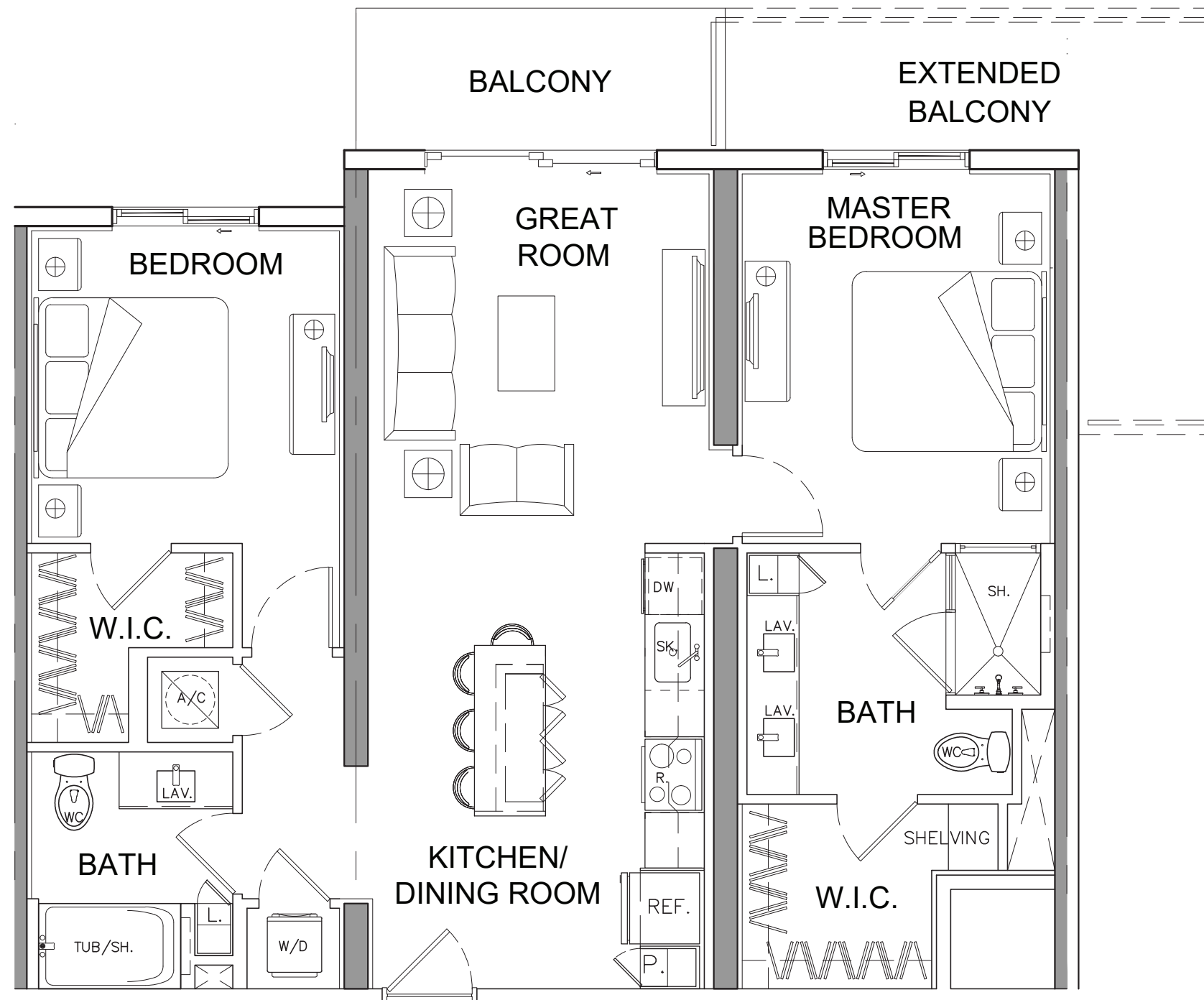
Exclusive Sales & Marketing by **ISGWORLD**<sup>®</sup>

GROSS A/C AREA = 724 SQ. FT. (1 BD/1 BTH)  
(20 DU'S)

All plans, features and amenities depicted herein are based upon preliminary development plans and are subject to change without notice in the manner provided in the offering documents by the developer. No guarantees or representations whatsoever are made that any plans, features, amenities or facilities will be provided or, if provided, will be of the same type, size, location or nature as depicted or described herein. The sketches, renderings, graphic materials, plans, specifications, terms, conditions and statements contained are proposed only. and we reserve the right to modify, revise or withdraw any or all of same in our sole discretion and without prior notice.



NORTH LINE KEY: (04)

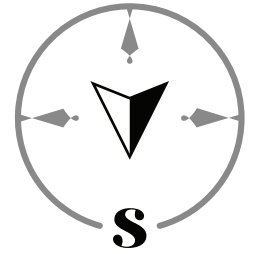


Exclusive Sales & Marketing by **ISGWORLD®**

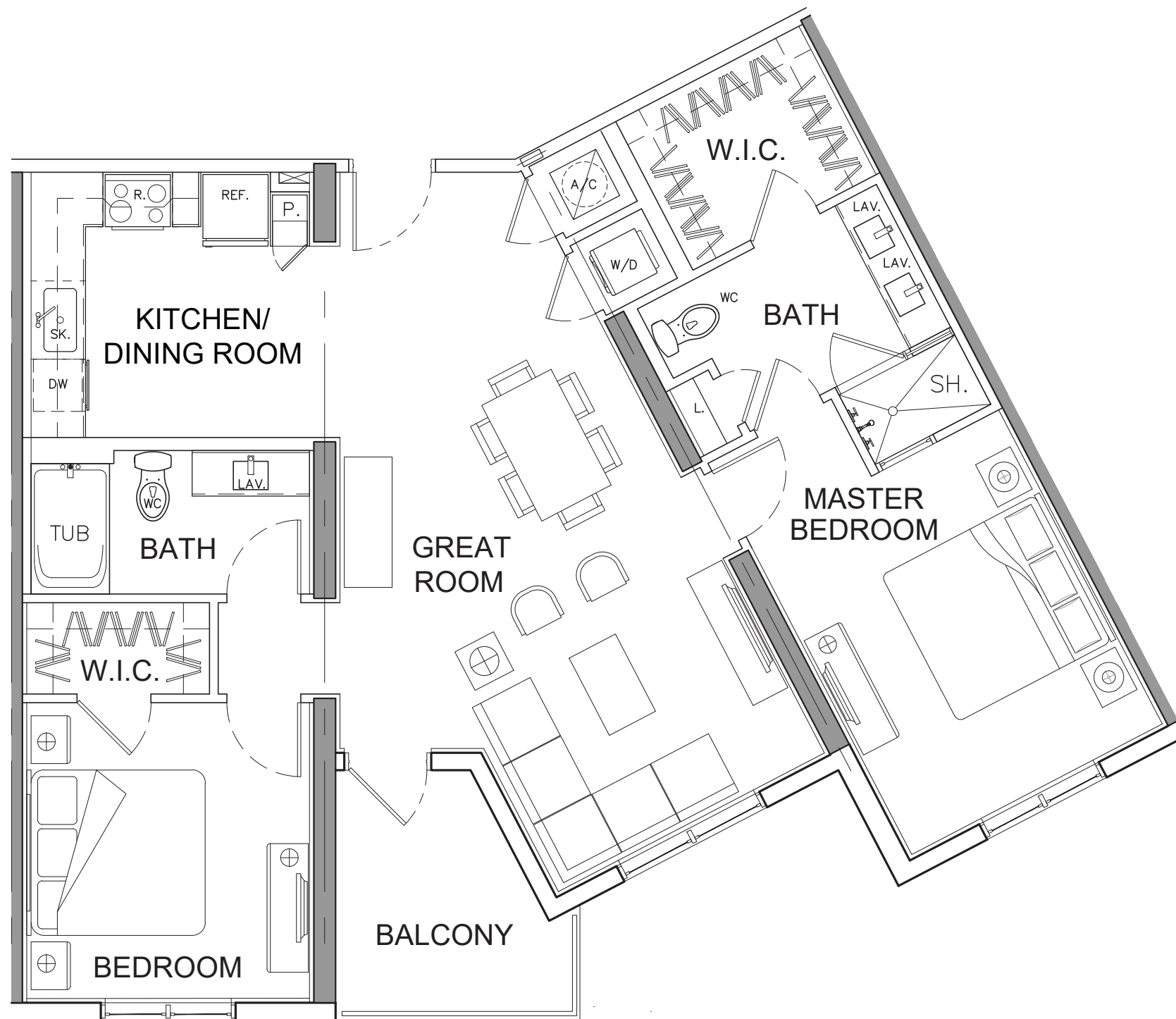
(2 BD/2 BTH)  
 GROSS A/C AREA = 1071 SQ. FT. (60 DU'S)  
 BALCONY = 65 SQ. FT.

All plans, features and amenities depicted herein are based upon preliminary development plans and are subject to change without notice in the manner provided in the offering documents by the developer. No guarantees or representations whatsoever are made that any plans, features, amenities or facilities will be provided or, if provided, will be of the same type, size, location or nature as depicted or described herein. The sketches, renderings, graphic materials, plans, specifications, terms, conditions and statements contained are proposed only. and we reserve the right to modify, revise or withdraw any or all of same in our sole discretion and without prior notice.

SHOMA  
bay



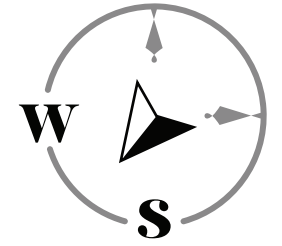
SOUTH LINE KEY: (05)



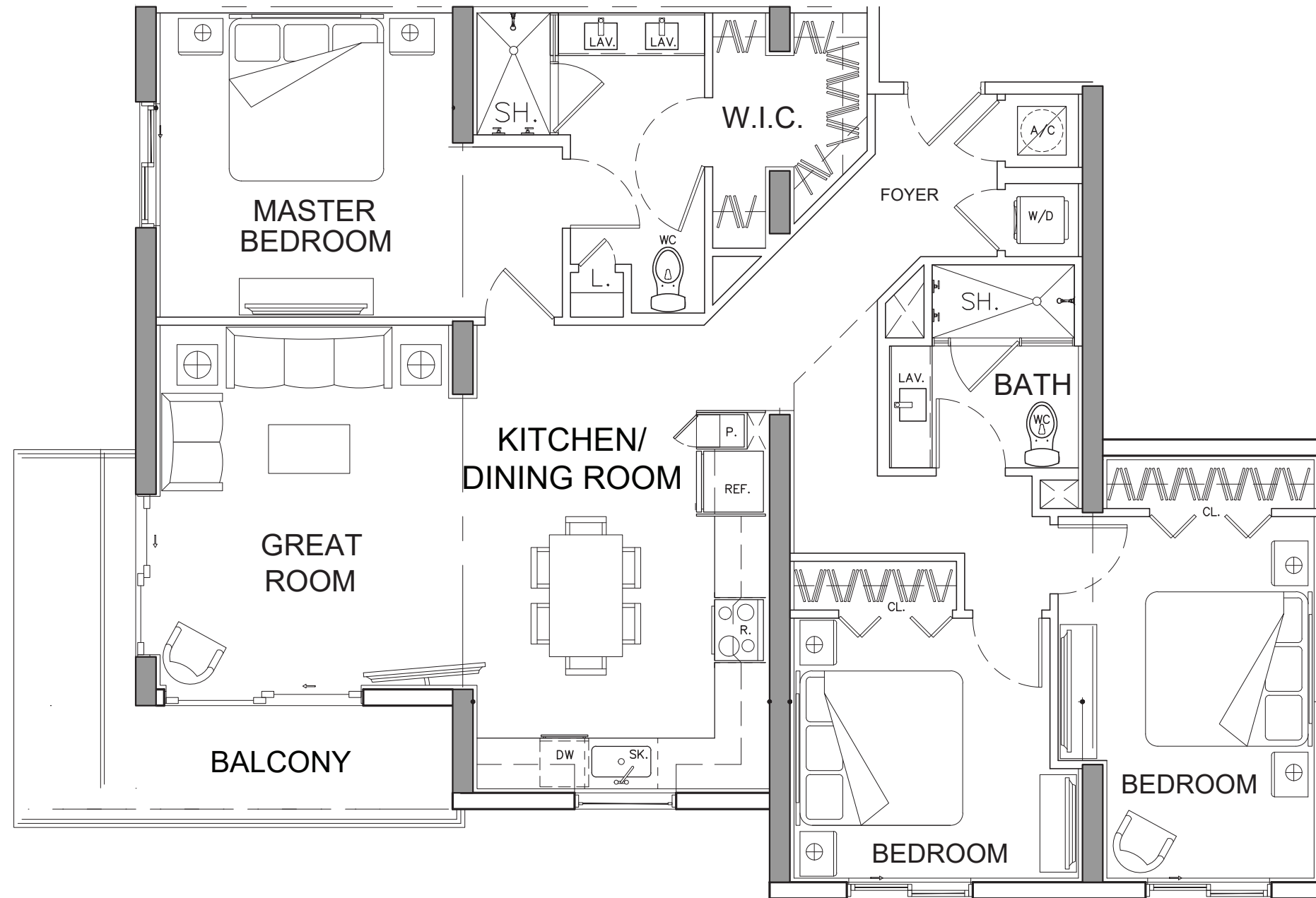
Exclusive Sales & Marketing by **ISGWORLD®**

(2 BD/2 BTH)  
 GROSS A/C AREA = 1150 SQ. FT. (10 DU'S)  
 BALCONY = 75 SQ. FT.

All plans, features and amenities depicted herein are based upon preliminary development plans and are subject to change without notice in the manner provided in the offering documents by the developer. No guarantees or representations whatsoever are made that any plans, features, amenities or facilities will be provided or, if provided, will be of the same type, size, location or nature as depicted or described herein. The sketches, renderings, graphic materials, plans, specifications, terms, conditions and statements contained are proposed only. and we reserve the right to modify, revise or withdraw any or all of same in our sole discretion and without prior notice.



SOUTH WEST LINE KEY: (12)



Exclusive Sales & Marketing by **ISGWORLD®**

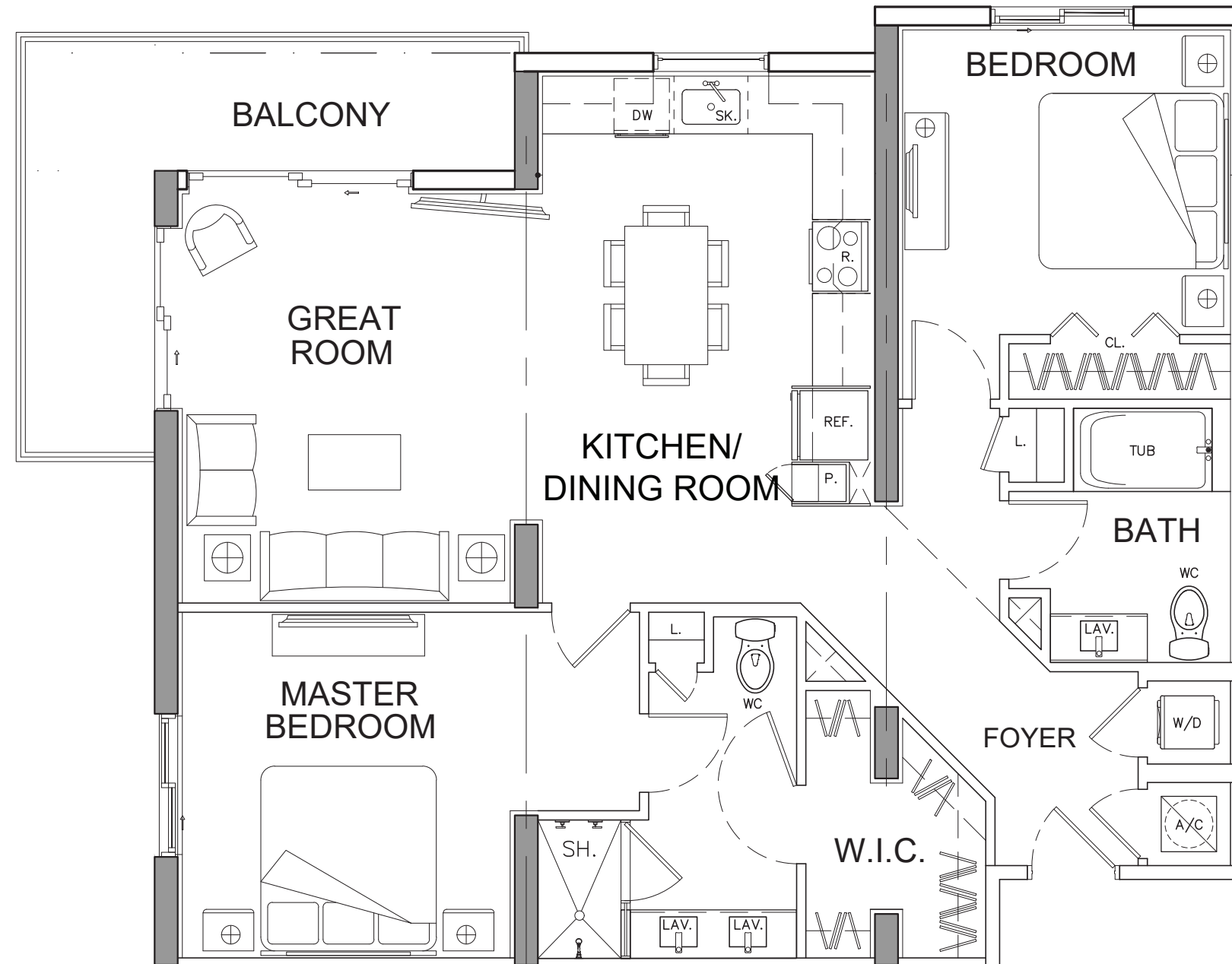
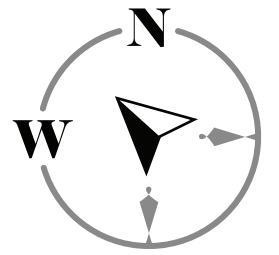
(3 BD/2 BTH)

GROSS A/C AREA = 1447 SQ. FT.  
BALCONY = 143 SQ. FT.

(19 DU'S)

All plans, features and amenities depicted herein are based upon preliminary development plans and are subject to change without notice in the manner provided in the offering documents by the developer. No guarantees or representations whatsoever are made that any plans, features, amenities or facilities will be provided or, if provided, will be of the same type, size, location or nature as depicted or described herein. The sketches, renderings, graphic materials, plans, specifications, terms, conditions and statements contained are proposed only. and we reserve the right to modify, revise or withdraw any or all of same in our sole discretion and without prior notice.

SHOMA  
bay



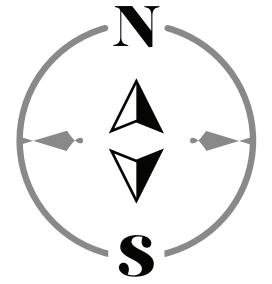
NORTH WEST LINE KEY: (13)

Exclusive Sales & Marketing by **ISGWORLD®**

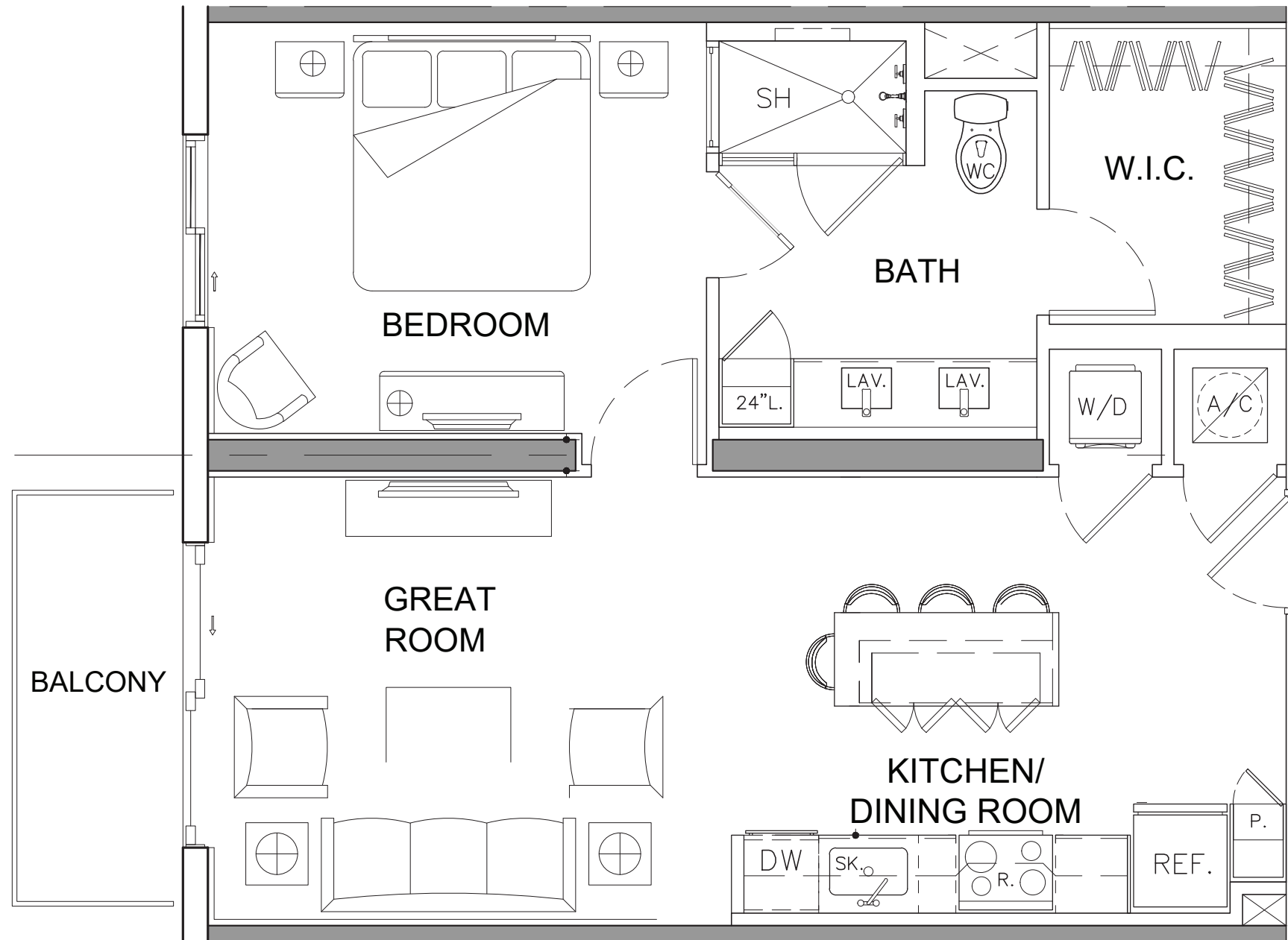
(2 BD/2 BTH)  
 GROSS A/C AREA = 1237 SQ. FT. (20 DU'S)  
 BALCONY = 143 SQ. FT.

All plans, features and amenities depicted herein are based upon preliminary development plans and are subject to change without notice in the manner provided in the offering documents by the developer. No guarantees or representations whatsoever are made that any plans, features, amenities or facilities will be provided or, if provided, will be of the same type, size, location or nature as depicted or described herein. The sketches, renderings, graphic materials, plans, specifications, terms, conditions and statements contained are proposed only. and we reserve the right to modify, revise or withdraw any or all of same in our sole discretion and without prior notice.

SHOMA  
bay



**NORTH LINE KEY: (02)**  
**SOUTH LINE KEY: (08)**



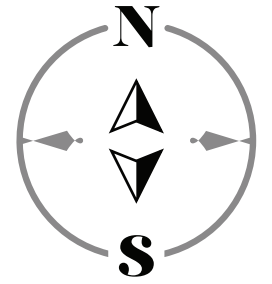
Exclusive Sales & Marketing by **ISGWORLD®**

(1 BD/1 BIH)  
GROSS A/C AREA = 750 SQ. FT. (40 DU'S)  
BALCONY = 60 SQ. FT.

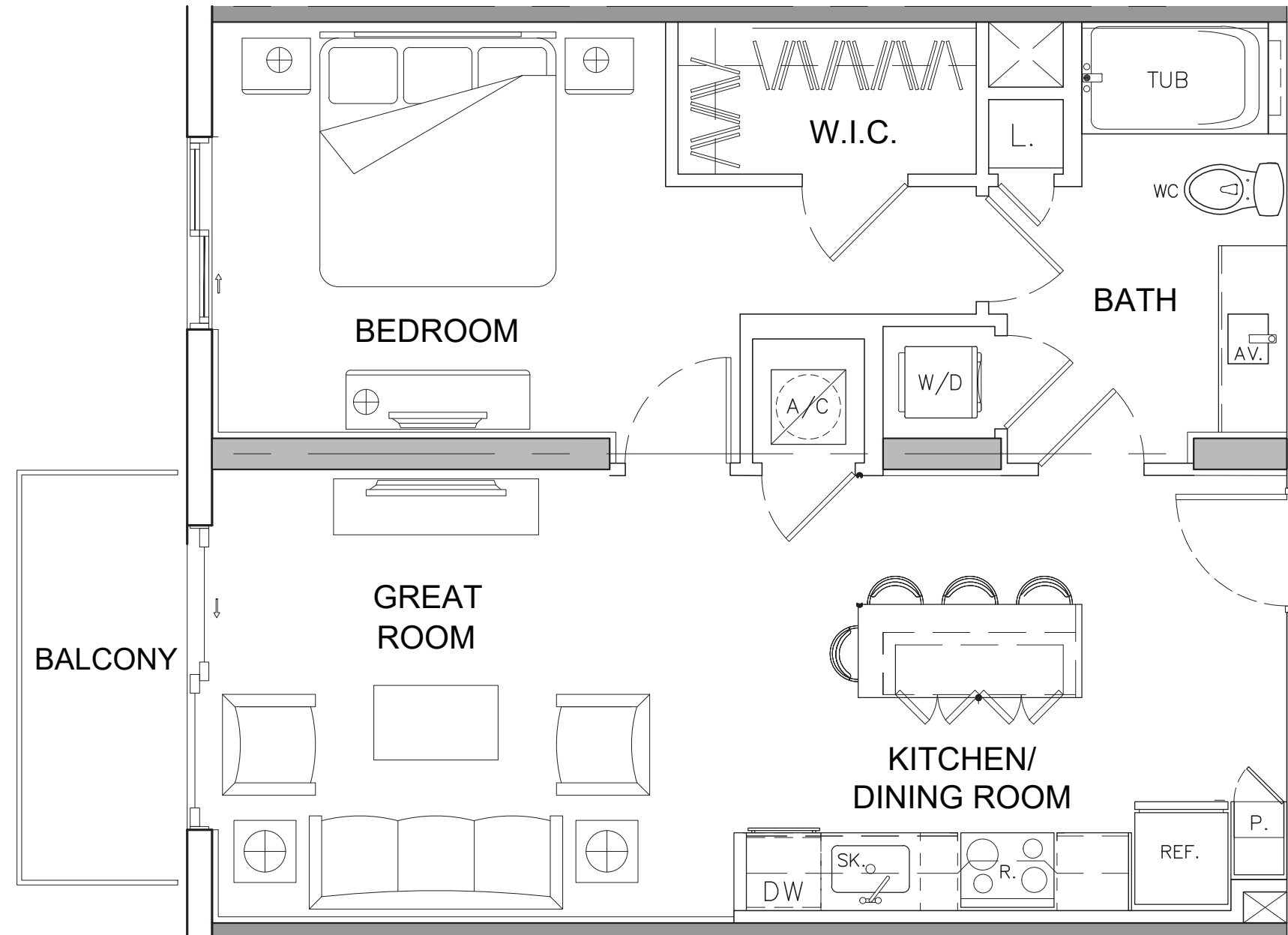
All plans, features and amenities depicted herein are based upon preliminary development plans and are subject to change without notice in the manner provided in the offering documents by the developer. No guarantees or representations whatsoever are made that any plans, features, amenities or facilities will be provided or, if provided, will be of the same type, size, location or nature as depicted or described herein. The sketches, renderings, graphic materials, plans, specifications, terms, conditions and statements contained are proposed only. and we reserve the right to modify, revise or withdraw any or all of same in our sole discretion and without prior notice.



SHOMA  
bay



**NORTH LINE KEY: (03)**  
**SOUTH LINE KEY: (07)**



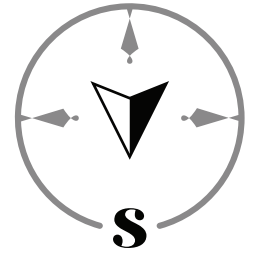
**Exclusive Sales & Marketing by ISGWORLD®**

**(1 BD/1 BTH)**  
GROSS A/C AREA = 750 SQ. FT. (40 DU'S)  
BALCONY = 60 SQ. FT.

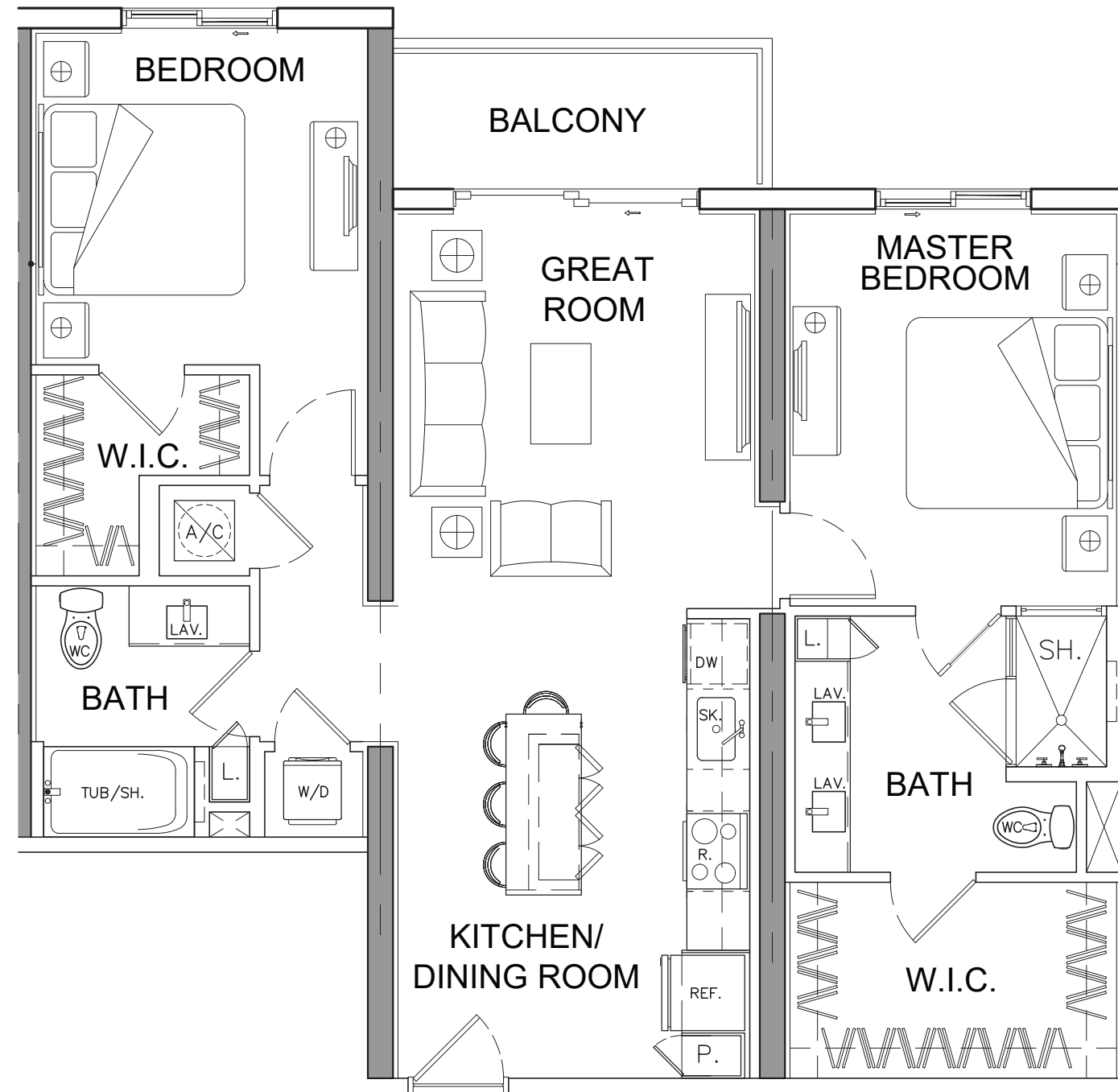
All plans, features and amenities depicted herein are based upon preliminary development plans and are subject to change without notice in the manner provided in the offering documents by the developer. No guarantees or representations whatsoever are made that any plans, features, amenities or facilities will be provided or, if provided, will be of the same type, size, location or nature as depicted or described herein. The sketches, renderings, graphic materials, plans, specifications, terms, conditions and statements contained are proposed only. and we reserve the right to modify, revise or withdraw any or all of same in our sole discretion and without prior notice.



SHOMA  
bay



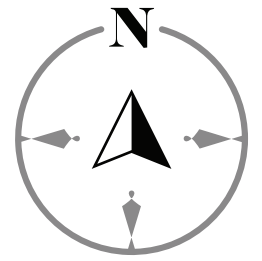
SOUTH LINE KEY: (06 / 09 / 10 / 11)



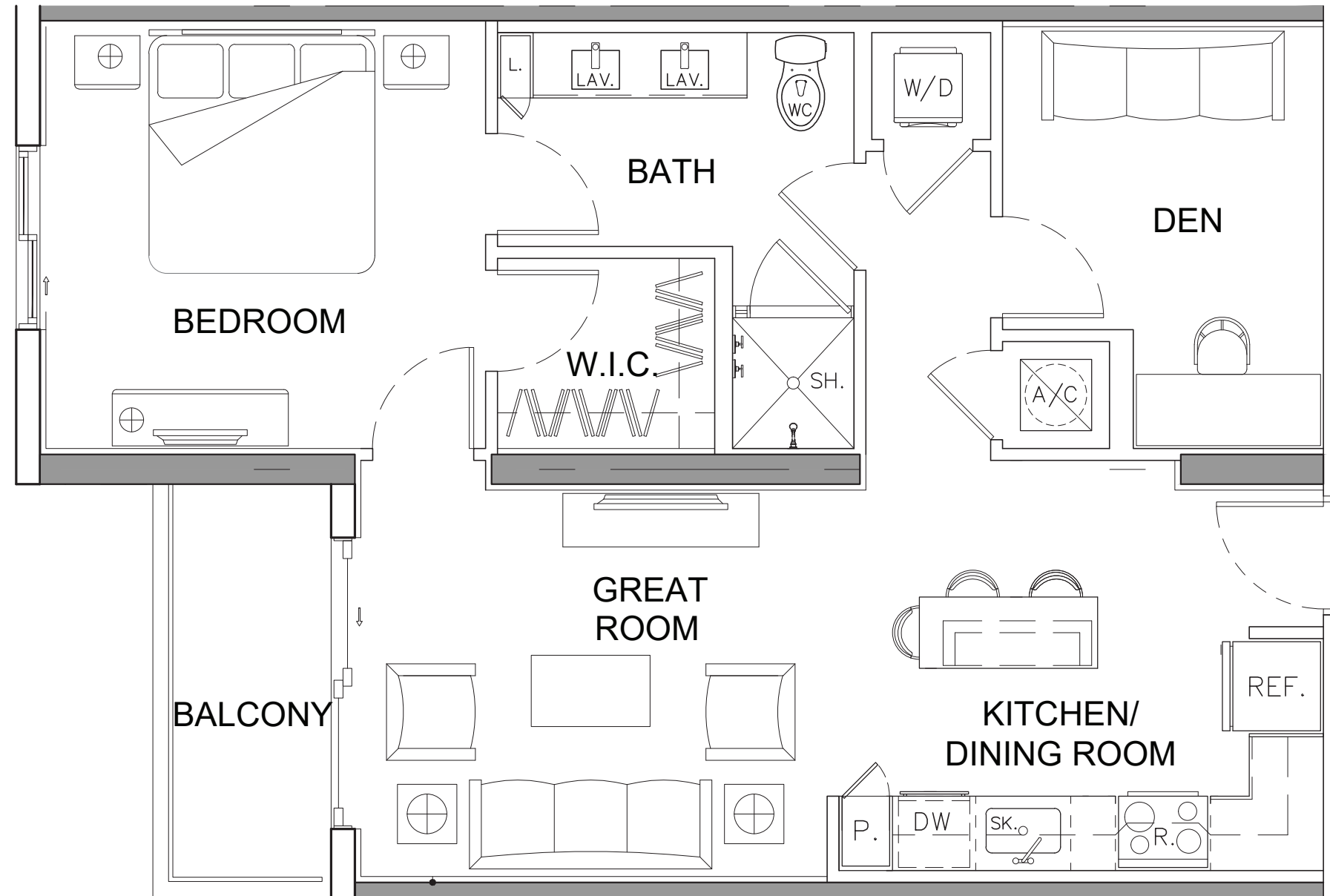
Exclusive Sales & Marketing by **ISGWORLD®**

(2 BD/2 BTH)  
 GROSS A/C AREA = 1092 SQ. FT. (40 DU'S)  
 BALCONY = 63 SQ. FT.

All plans, features and amenities depicted herein are based upon preliminary development plans and are subject to change without notice in the manner provided in the offering documents by the developer. No guarantees or representations whatsoever are made that any plans, features, amenities or facilities will be provided or, if provided, will be of the same type, size, location or nature as depicted or described herein. The sketches, renderings, graphic materials, plans, specifications, terms, conditions and statements contained are proposed only. and we reserve the right to modify, revise or withdraw any or all of same in our sole discretion and without prior notice.



NORTH LINE KEY: (14 / 16)



Exclusive Sales & Marketing by **ISGWORLD®**

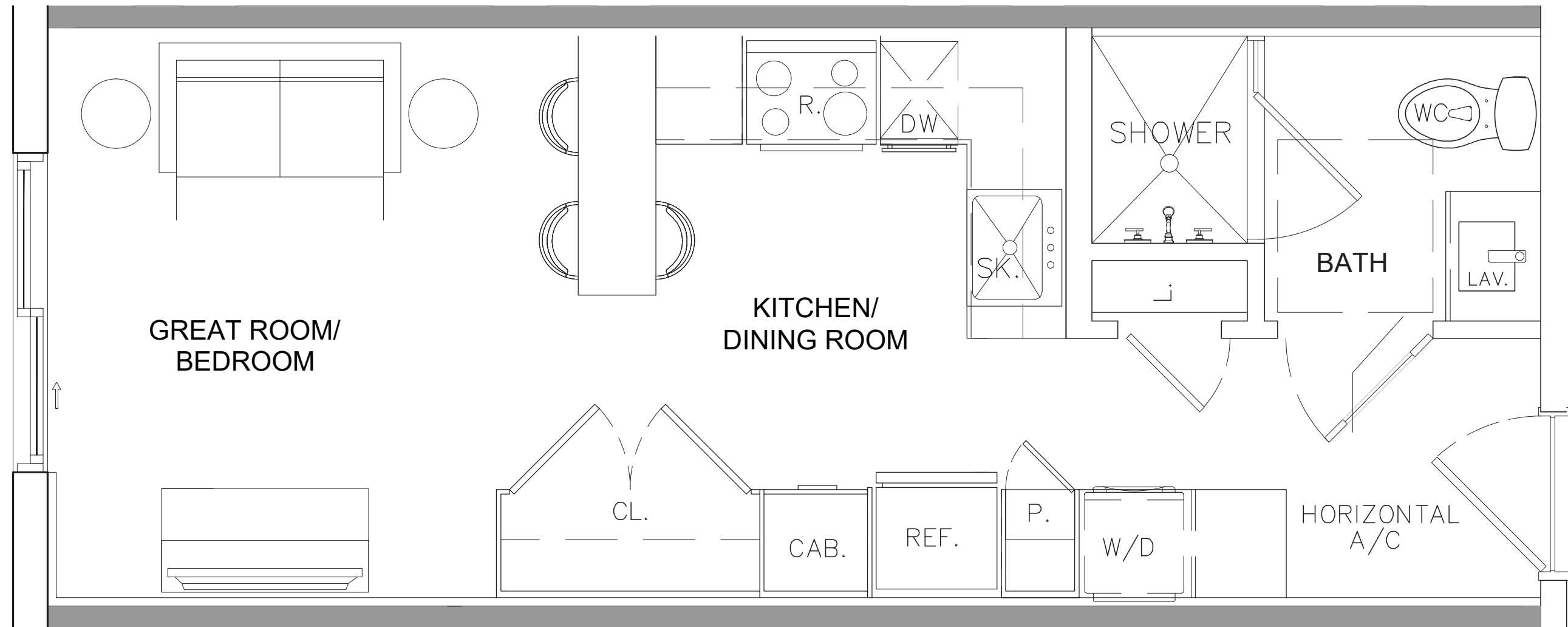
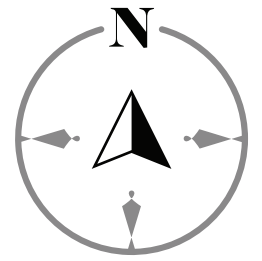
(1 BD/1 B III 1 DEN)

GROSS A/C AREA = 827 SQ. FT.

(40 DU'S)

BALCONY = 58 SQ. FT.

All plans, features and amenities depicted herein are based upon preliminary development plans and are subject to change without notice in the manner provided in the offering documents by the developer. No guarantees or representations whatsoever are made that any plans, features, amenities or facilities will be provided or, if provided, will be of the same type, size, location or nature as depicted or described herein. The sketches, renderings, graphic materials, plans, specifications, terms, conditions and statements contained are proposed only. and we reserve the right to modify, revise or withdraw any or all of same in our sole discretion and without prior notice.



Exclusive Sales & Marketing by **ISGWORLD®**

**STUDIO**

GROSS A/C AREA = 360 SQ. FT.

**(0 BD/1 BTH)**

(40 DU'S)

All plans, features and amenities depicted herein are based upon preliminary development plans and are subject to change without notice in the manner provided in the offering documents by the developer. No guarantees or representations whatsoever are made that any plans, features, amenities or facilities will be provided or, if provided, will be of the same type, size, location or nature as depicted or described herein. The sketches, renderings, graphic materials, plans, specifications, terms, conditions and statements contained are proposed only. and we reserve the right to modify, revise or withdraw any or all of same in our sole discretion and without prior notice.