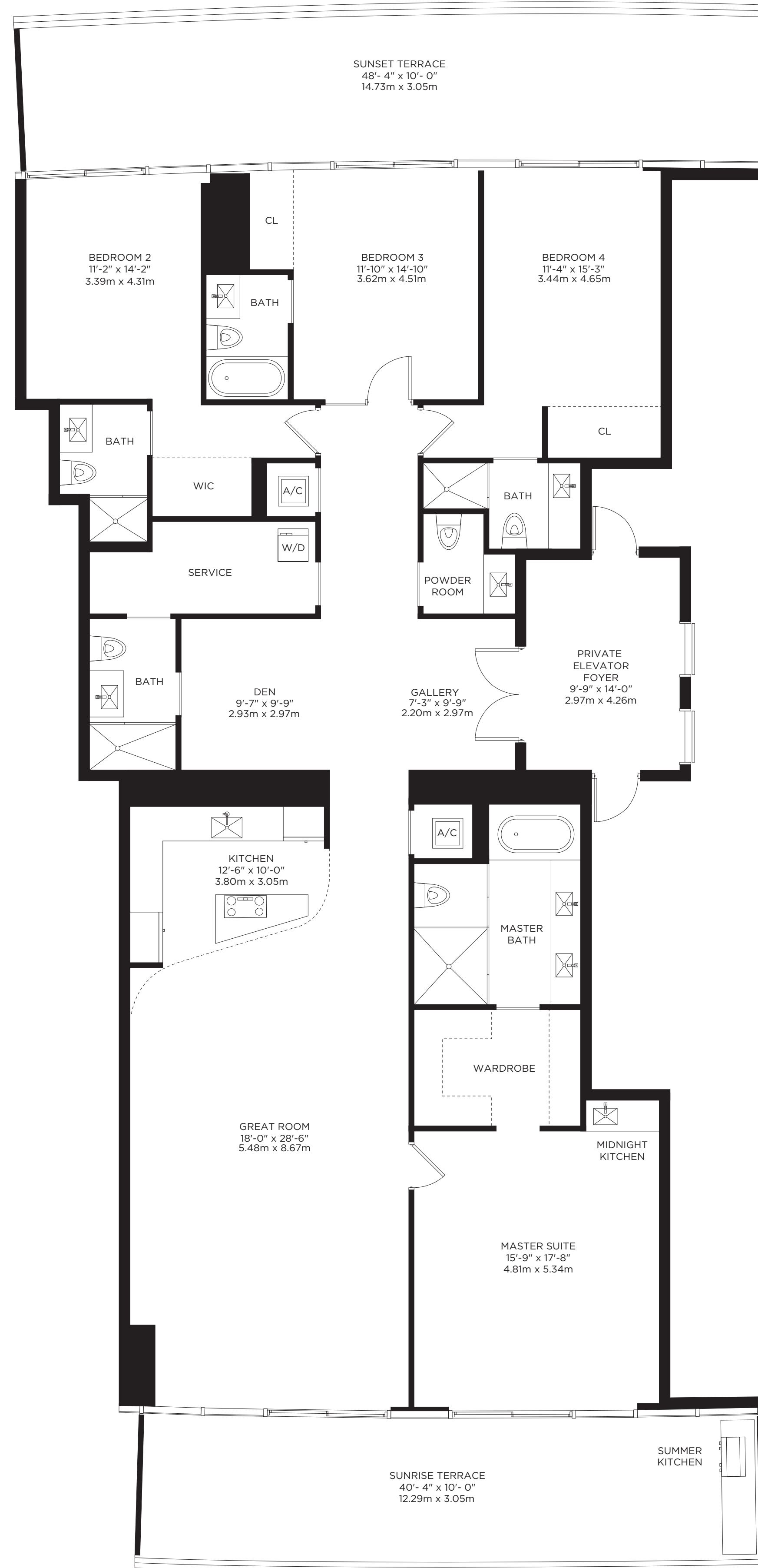
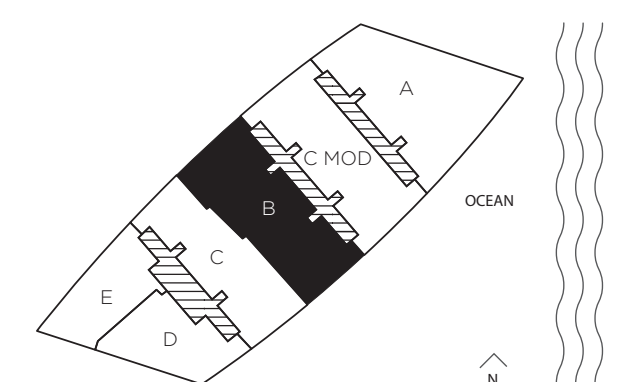




RESIDENCES BY  
**ARMANI/CASA**  
 Architecture by César Pelli



|   |               |               |
|---|---------------|---------------|
| <b>RESIDENCE B</b>                            |               |               |
| <b>4 BEDROOMS + DEN + SERVICE / 5.5 BATHS</b> |               |               |
| INTERIOR AREA                                 | 3,176 SQ. FT. | 295.06 SQ. M. |
| TERRACE AREA                                  | 886 SQ. FT.   | 82.31 SQ. M.  |
| TOTAL RESIDENCE                               | 4,062 SQ. FT. | 377.37 SQ. M. |



There are various methods for calculating the square footage of a Unit and depending on the method of calculation, the quoted square footage of a Unit may vary. The dimensions shown for this Unit floor plan have been calculated from the exterior boundaries of the exterior walls to the centerline of interior demising walls, including common elements such as structural walls and other interior structural components of the building; these dimensions are greater than the dimensions that would be determined by using the definition of "Unit" set forth in the Prospectus and the Declaration. The measurements of a room set forth on this floor plan are generally taken at the greatest points of each given room (as if the room were a perfect rectangle) without regard for any cutouts and so, the actual room area will typically be smaller than the product obtained by multiplying the stated length by the stated width. All dimensions are approximate and may vary with actual construction. All floor plans are subject to change. Any furnishings or décor illustrated are not included with your Unit purchase. Consult the Prospectus for information regarding what is included with your Unit purchase and for the method for calculating your Unit dimensions.